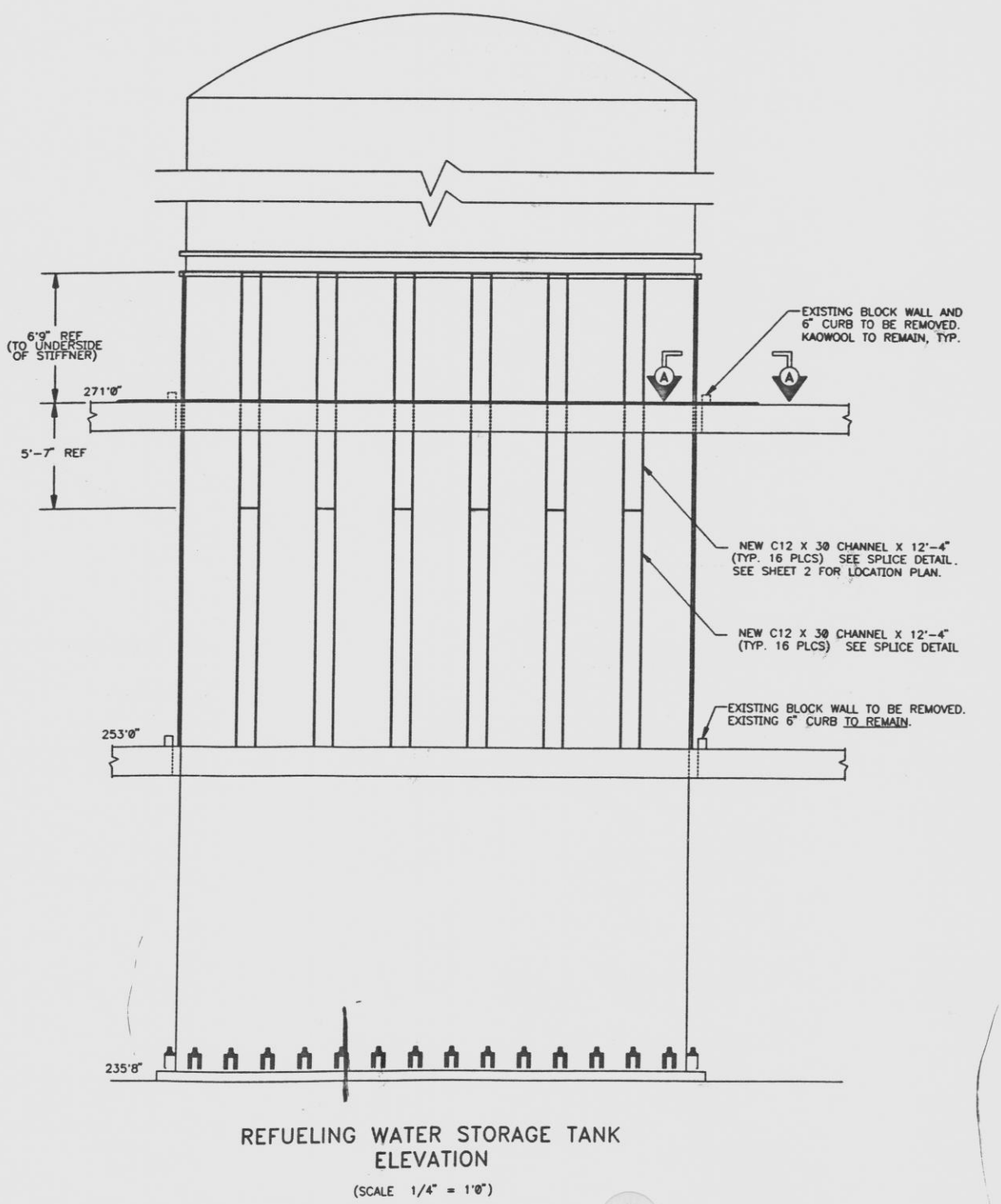
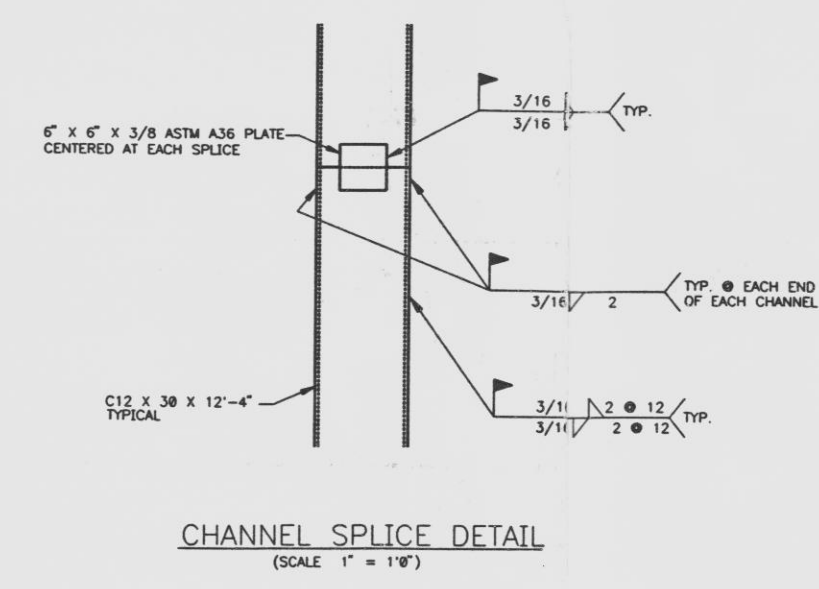
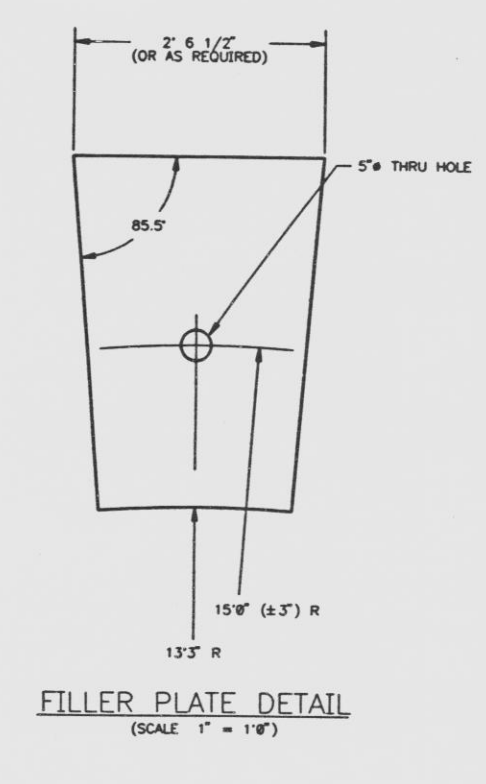
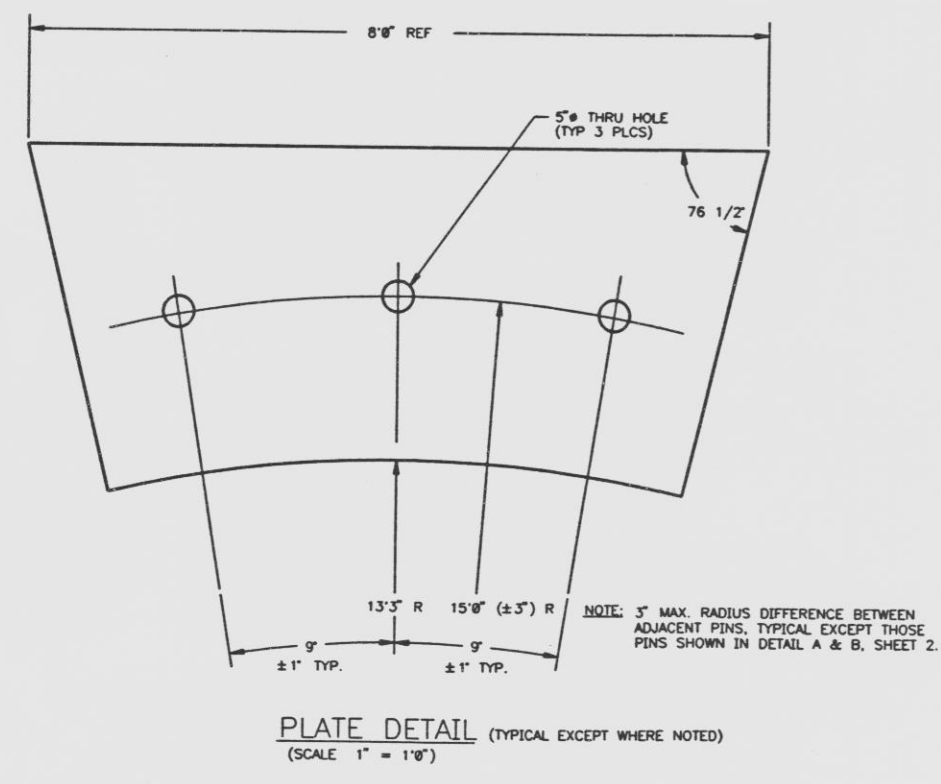
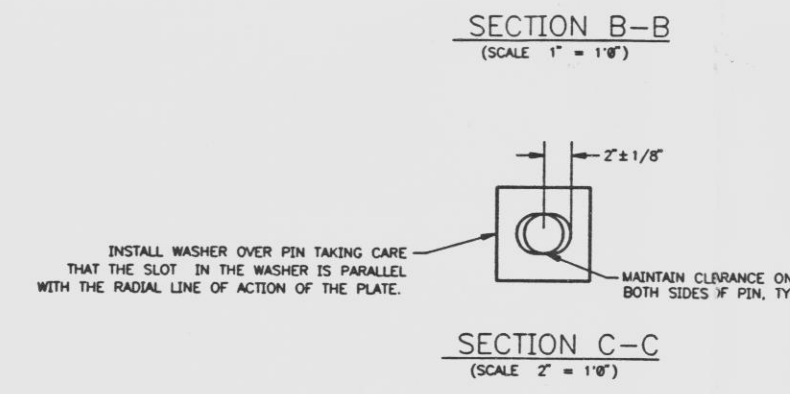
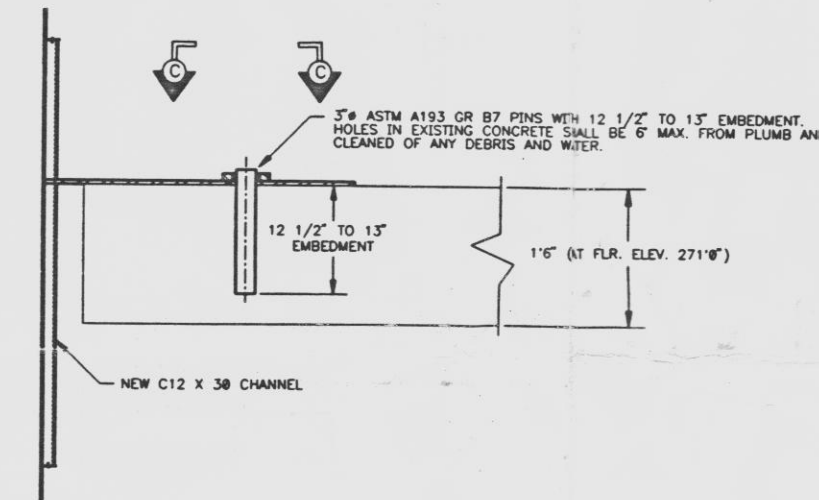


- NOTES:**
- 1) ALL STEEL WORK SHALL CONFORM TO THE LATEST AISC SPECIFICATIONS.
  - 2) ALL STRUCTURAL STEEL AND PLATE TO BE ASTM A36 OR EQUAL.
  - 3) PROCUREMENT AND INSTALLATION OF STEEL WORK TO BE IN ACCORDANCE WITH TECHNICAL SPECIFICATION CE-125, LATEST REVISION.
  - 4) WELDING: NOTE: NO NEW WELDS WITHIN 1" OF EXISTING RWST TANK WELDS.
    - a) ALL CARBON STEEL TO CARBON STEEL GROOVE WELDS SHALL BE IN ACCORDANCE WITH AWS 108, WPS 100-12-A18.
    - b) ALL CARBON STEEL TO CARBON STEEL FILLET WELDS SHALL BE IN ACCORDANCE WITH AWS 108, WPS 100-12.
    - c) ALL BE-METAL (STAINLESS STEEL TO CARBON STEEL) WELDS SHALL BE IN ACCORDANCE WITH AWS 108 WPS, WPS 100-37.
    - d) ALL WELDS SHALL BE VISUAL INSPECTED AND SHALL MEET THE REQUIREMENTS OF AWS 108 SECTION 14 AND AWS D1.1 PARA. 9.25.1.3 AND 9.25.1.7.
  - 5) INSTALL NEW C12 X 38 CHANNEL AS SHOWN. RELOCATION DUE TO INTERFERENCE IS PERMISSIBLE UPON STRUCTURAL ENGINEERING APPROVAL. CHANNELS TO BE NOTCHED AS REQUIRED TO CLEAR EXISTING RWST TANK WELDS. PRIOR TO WELDING CHANNELS MUST BE DOUBLE RIGGED OR USE SOME OTHER SINGLE FAILURE PROOF RIGGING METHOD APPROVED BY ENGINEER.
  - 6) PLATE FABRICATION AND INSTALLATION.
    - a) PLATES TO BE SIZED AS SHOWN FROM 3/4" X 4'-8" X 8'-8" STOCK.
    - b) 5/8" THRU HOLES TO BE DRILLED WITHIN ACCEPTABLE ZONE SHOWN ON PLATE DETAIL. PRIOR TO DRILLING THRU HOLES FOR PLATES, CONTRACT SHALL DETERMINE LOCATION OF PINS WITHIN ACCEPTABLE ZONE. CONTRACT SHALL DETERMINE LOCATION. NO REBAR CUTS WILL BE APPROVED BY ENGINEER AT EXISTING CONCRETE BEAMS.
    - c) PLATES TO BE NOTCHED AS REQUIRED FOR CLEARANCE OF C12 X 38 CHANNELS AND EXISTING RWST TANK WELDS.
  - 7) ALL CARBON STEEL SHALL BE PAINTED IN ACCORDANCE WITH CE-125. CARBOLINE 890 MAY BE USED IN PLACE OF CARBOLINE 801.
  - 8) THE WELD SHOWN IN SECTION A-A JOINING THE 3/4" PLATES SHALL BE USED TO JOIN THE 3/4" PLATE WHENEVER IT MUST BE CUT TO FIT AT INTERFERENCES, ETC.



9806170116



NUCLEAR SAFETY RELATED  
 (EXCEPT AS NOTED AT BASEMENT FLOOR EL. 235'-8")

9806170116

DATE	CONSTRUCTION RELEASED FOR	BY
		D. J. L...
REVISIONS	REVISIONS	
NO.	DATE	BY
1	3/12/98	C.J.H.
2	3/13/98	D.W.Z.
3	3/13/98	D.W.Z.
4	3/13/98	L.A.S.
REVISIONS	REVISIONS	
NO.	DATE	BY
1	3/12/98	C.J.H.
2	3/13/98	D.W.Z.
3	3/13/98	D.W.Z.
4	3/13/98	L.A.S.
PROJECT	NO.	DATE
REFUELING WATER STORAGE TANK	33013-2708	3/12/98
SCALE	AS NOTED	ROCHESTER GAS & ELECTRIC CORP. ROCHESTER, NEW YORK
JOB NUMBER	DRAWING NUMBER	SHEET REV.
5984B	33013-2708	1 OF 2