

VOGTLE

UNITS 3&4



Vogtle Construction Update CIP Task Force

Amanda Pugh

Southern Nuclear Operating Company

September 21, 2017

NUCLEAR DEVELOPMENT

Unit 3 Steam Generator positioned for the rigging process



1.4 million-pound Steam Generator is lifted into Unit 3 Containment



VOGTLE
UNITS **3&4**



Georgia Power



Southern Nuclear

NUCLEAR DEVELOPMENT

CA01 Pressurizer Bay is placed in the Unit 4 containment vessel



VOGTLE
UNITS **3&4**



Georgia Power



Southern Nuclear

NUCLEAR DEVELOPMENT

The Pressurizer Bay is 60 feet tall, 40 feet wide and weighs 240,000 pounds



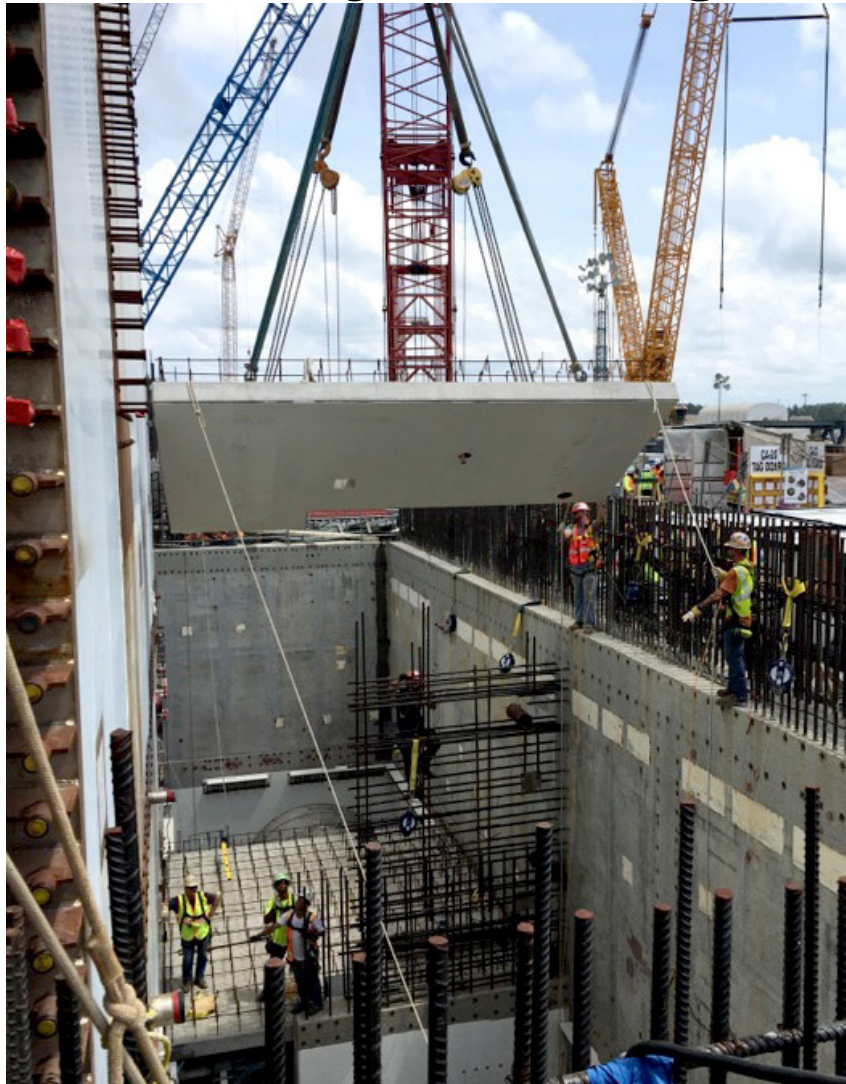
In July the first Accumulator Tank is placed inside Unit 3 Containment



In August the second Accumulator Tank is placed inside Unit 3



Unit 4 Auxiliary Building walls set



VOGTLE
UNITS **3&4**

 Georgia Power

 Southern Nuclear

NUCLEAR DEVELOPMENT

KQ22 and KQ23 modules placed in Unit 3 Containment



Progress on the structural steel on the Unit 4 Annex Building



VOGTLE
UNITS **3&4**

 Georgia Power  Southern Nuclear

NUCLEAR DEVELOPMENT

Installation of panels on Unit 3 Turbine Building



Reserve Auxiliary Transformers will supply voltage to U3 switchgear



Aerial View in June 2016



An aerial shot of the entire Vogtle 3 and 4 construction site, Unit 3 on the left and Unit 4 on the right.

June 2016

©2016 Georgia Power Company All rights reserved

VOGTLE
UNITS **3&4**



Georgia Power



Southern Nuclear

NUCLEAR DEVELOPMENT

Aerial View in July 2017



Vogtle 3 and 4 construction site.

July 2017

©2017 Georgia Power Company All rights reserved

VOGTLE
UNITS **3&4**

 Georgia Power  Southern Nuclear

NUCLEAR DEVELOPMENT