

- NOTES:-
1. DEVICES WITHOUT LOCATION MARKINGS ARE MOUNTED IN THE SWITCHGEAR.
 2. LAST WIRE MARK USED: 24- WIRE MARKS HAVE DRAWING SHEET NO. "122" SUFFIX.
 3. VALVE 9707A IS SHOWN IN FULLY CLOSED POSITION.
 4. FOR MOTOR CONTROL SWITCH DEVELOPMENT SEE DEVICE 2C DWG. B-281-073. FOR 43 SWITCH DEVELOPMENT SEE DEVICE 2D DWG. B-281-073. FOR RUN/TEST CONTROL SWITCH DEVELOPMENT SEE DEVICE 2E DWG. B-281-073.
 5. FW-LB4093A CONDENSATE STORAGE TANK LEVEL SWITCH SHOWN IN TANK LEVEL NORMAL POSITION.

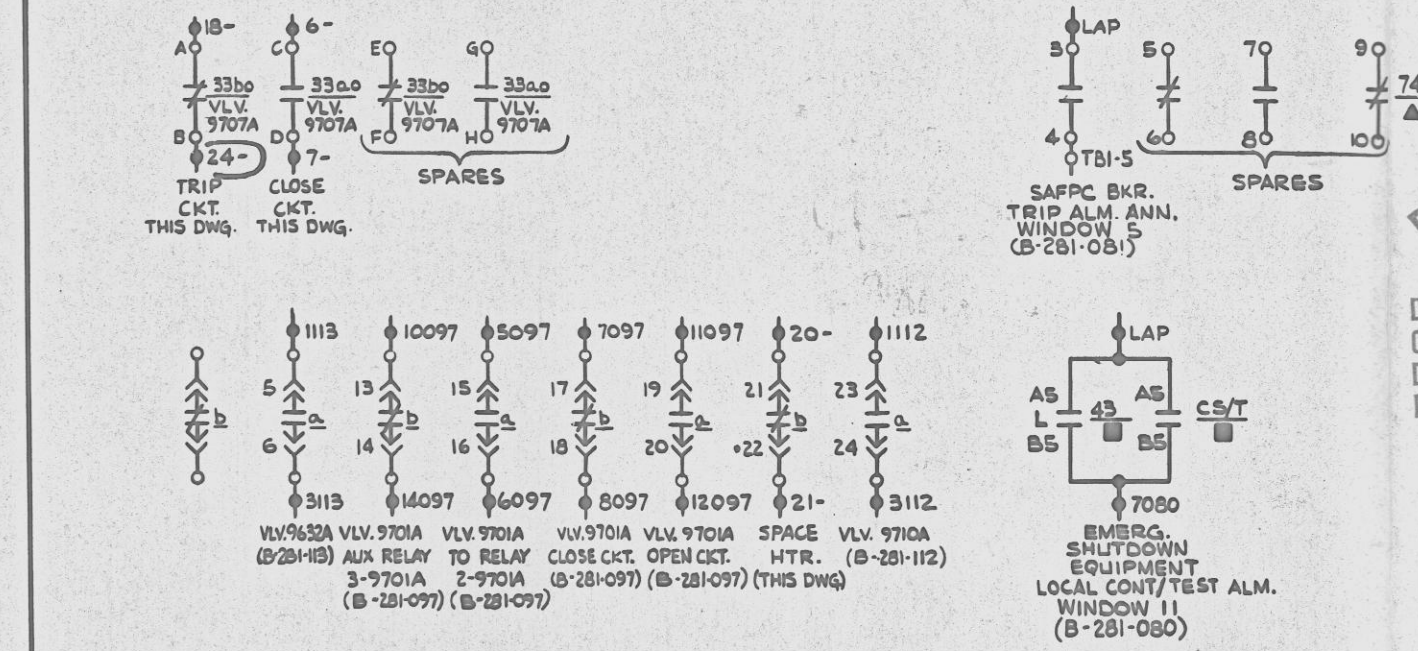
- LEGEND:-
- ▲ MAIN CONTROL BOARD SECTION
 - LOCAL CONTROL STATION FU-5
 - FIELD INSTALLED WIRE (SEE NOTE 2)
 - SAFPC INSTRUMENT PANEL

CONSTRUCTION
LIMITED CONSTRUCTION: AS NOTED
PRELIMINARY NOT FOR CONSTRUCTION
BIDDING PURPOSES
FOR INFORMATION ONLY
RELEASED FOR

SEP 21 78
DATE

REFERENCES:-
S-881-331 SH. 1 COMPONENT LOGIC DIAGRAM
SS-281-065 SH. 11 BLOCK DIAGRAM
D-302-071 SYSTEM DIAGRAM

PCAR
ENGR.



THIS IS A
NUCLEAR SAFETY RELATED
DOCUMENT. NO DEVIATION SHALL BE
INITIATED OR PERFORMED WITHOUT PRIOR
DOCUMENTATION AND WRITTEN APPROVAL.

NO	MADE	CHGD	APPROVALS	DATE
REVISIONS				

SEPARATION GROUP - A

DATE	RELEASED FOR	ENGR.
9-5-75	CONSTRUCTION	GRG
	LIMITED CONSTRUCTION: AS NOTED	
7-10-75	PRELIMINARY NOT FOR CONSTRUCTION BIDDING PURPOSES	GRG

ROCHESTER GAS & ELECTRIC CORPORATION
GINNA STATION
ELECTRICAL
ELEMENTARY WIRING DIAGRAM
MOTOR DRIVEN SAFWP C

READING PA. **GILBERT ASSOCIATES, INC.**
ENGINEERS AND CONSULTANTS

DRAWING		ENGINEER APPROVALS			
MADE	CHECKED	ARCHITECTURAL	CIVIL	STRUCTURAL	ELECTRICAL
LDL	RPS				GRG
APPROVAL		MECHANICAL	ENVIRONMENTAL	NUCLEAR	

SCALE: 04 4594 B-281-122 3
w.o. 044594-011 DRAWING NUMBER REV

REGULATORY DOCKET FILE COPY

TERA
APERTURE
-31C

Docket # 50-244
Control # 8109290350
Date 9-22-81 of Document:
REGULATORY DOCKET FILE

REV. AS IND. Δ 1-PLACE PER FCR 103	REV. AS IND. Δ 11 PLACES	NO	MADE	CHGD	APPROVALS	DATE
3	2	1	LDL	RPS	GRG	9/1/77
			RSB	RPS	GRG	11/10/78
			LDL	RPS	GRG	1/28/79

EWD MOTOR DRIVEN SAFWP C