

- NOTES:-**
1. DEVICES WITHOUT LOCATION MARKINGS ARE MOUNTED AT MCC.
 2. LAST WIRE MARK USED: 16- (WIRE MARKS HAVE DRAWING SHEET NO. "107" SUFFIX).
 3. VALVE IS SHOWN IN FULLY OPEN POSITION.
 4. FOR SELECTOR SWITCH DEVELOPMENT SEE DEVICE 2B, DWG. B-281-073.
 5. FB-4085A-FEEDWATER FLOW, CONTACT CLOSING WHEN FLOW IS GREATER THAN 240 GPM, OPENS WHEN FLOW IS LESS THAN 230 GPM.

	CONSTRUCTION	
	LIMITED CONSTRUCTION: AS NOTED	
	PRELIMINARY NOT FOR CONSTRUCTION	
	BIDDING PURPOSES	
	FOR INFORMATION ONLY	
SEP 21 '81	RELEASED FOR	ENGR.

- LEGEND:-**
- ▲ MAIN CONTROL BOARD SECTION
 - FIELD INSTALLED WIRE (SEE NOTE 2)
 - 480V. SWITCHGEAR BUS 16 UNIT 17C

- REFERENCES:-**
- S-801-331, SH. 6 COMPONENT LOGIC DIAGRAM
 - SS-281-065, SH. 5 BLOCK DIAGRAM
 - D-302-071 SYSTEM DIAGRAM

TERA APERTURE CARD

THIS IS A NUCLEAR SAFETY RELATED DOCUMENT. NO DEVIATION SHALL BE INITIATED OR PERFORMED WITHOUT PRIOR DOCUMENTATION AND WRITTEN APPROVAL.

NO	MADE	CHKD	APPROVALS	DATE
REVISIONS				

SEPARATION GROUP B

9-5-75	CONSTRUCTION	GRG
	LIMITED CONSTRUCTION: AS NOTED	
7-10-75	PRELIMINARY NOT FOR CONSTRUCTION	GRG
	BIDDING PURPOSES	
DATE	RELEASED FOR	ENGR.

ROCHESTER GAS & ELECTRIC CORPORATION

GINNA STATION

ELECTRICAL

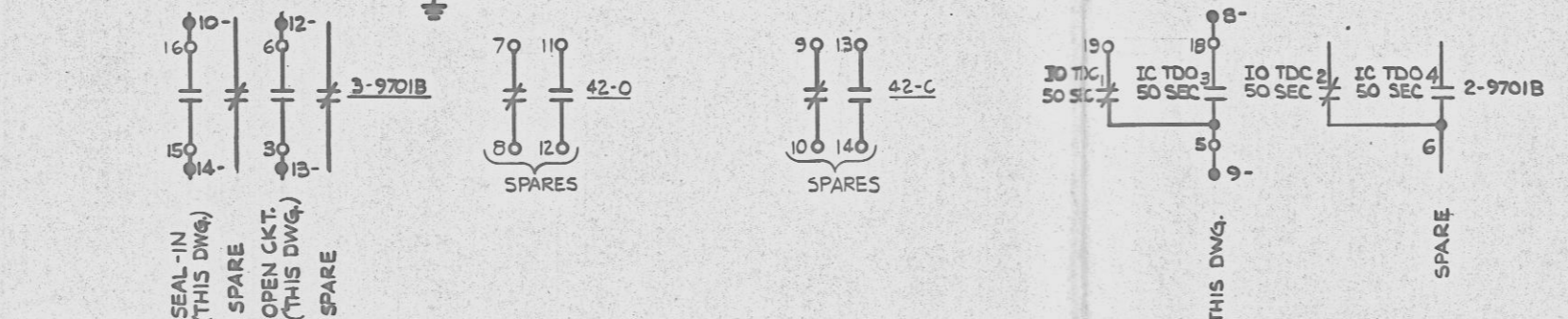
ELEMENTARY WIRING DIAGRAM

SAFW DISCH. VLV. 9701B

READING PA. **GILBERT ASSOCIATES, INC.** ENGINEERS AND CONSULTANTS

DRAFTING		ENGINEER APPROVALS			
MADE	CHECKED	ARCHITECTURAL	CIVIL	STRUCTURAL	ELECTRICAL
LDL	RPS				
6-8-75	6-11-75				
APPROVAL		MECHANICAL	ENVIRONMENTAL	NUCLEAR	
6-11-75					

SCALE	04	4594	B-281-107	2
W.G.	044594-011	DRAWING NUMBER		REV



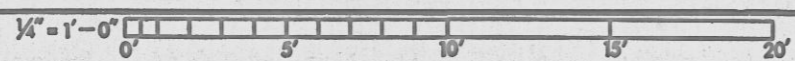
ROTOR POSITION	LIMIT SWITCH CONTACT DEVELOPMENT			FUNCTION	DWG. NO.
	FULLY OPEN	A	B		
1				20 TS BYPASS CKT.	THIS DWG.
2				20 SPARE	
3				20 GREEN IND. LIGHT	THIS DWG.
4				20 OPEN LIMIT	THIS DWG.
5				20 TS BYPASS CKT.	THIS DWG.
6				20 SPARE	
7				20 SPARE	
8				20 RED IND. LIGHT	THIS DWG.
9				20 SPARE	
10				20 SPARE	
11				20 SPARE	
12				20 SPARE	
13				20 SPARE	
14				20 SPARE	
15				20 SPARE	
16				20 CLOSE AUTO CUTOUT	THIS DWG.
				20 SPARE	

- LIMIT SWITCH LEGEND:-**
- (17) - CLOSING TORQUE SW. INTERRUPTS CONTROL CIRCUIT IF MECHANICAL OVERLOAD OCCURS DURING CLOSING CYCLE OR FULLY CLOSED VALVE.
 - (18) - OPENING TORQUE SW. INTERRUPTS CONTROL CIRCUIT IF MECHANICAL OVERLOAD OCCURS DURING OPENING CYCLE OR FULLY OPENED VALVE.
 - CLOSED CONTACTS
 - - - OPEN CONTACTS

REGULATORY DOCKET FILE COPY

Docket # 50-244
Control # 8109290350
Date 9-22-81 of Document
REGULATORY DOCKET FILE

REV. AS IND. IN 2 PLACES	PER FCR 169	2	LDL RPS	7/24	GRG	9/1/77
REVISED AS INDICATED IN 6 PLACES		1	LDL RPS	7/24	GRG	1/29/76
NO	MADE	CHKD	APPROVALS	DATE		



EWD SAFW DISCH VLV 9701B