

REGULATORY INFORMATION DISTRIBUTION SYSTEM (RIDS)

ACCESSION NBR:8401300132 DOC.DATE: 84/01/23 NOTARIZED: NO DOCKET #
 FACIL:50-244 Robert Emmet Ginna Nuclear Plant, Unit 1, Rochester G 05000244
 AUTH.NAME AUTHOR AFFILIATION
 MAIER,J.E. Rochester Gas & Electric Corp.
 RECIP.NAME RECIPIENT AFFILIATION
 CRUTCHFIELD,D. Operating Reactors Branch 5

SUBJECT: Advises that effective 840201,HG Saddock electec executive vice president,finance & rates,JE Maier elected senior vice president,operations & engineering & RW Kober elected vice president,electric & steam production.

DISTRIBUTION CODE: M006S COPIES RECEIVED:LTR 1 ENCL 1 SIZE: 2
 TITLE: Changes of Personnel/Address

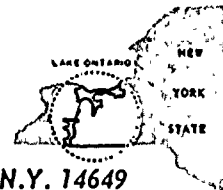
NOTES:NRR/DL/SEP 1cy.

05000244

	RECIPIENT ID CODE/NAME	COPIES LTR ENCL	RECIPIENT. ID CODE/NAME	COPIES LTR ENCL
	NRR/DL/ADSA 12	1 1	NRR ORB5 BC	1 0
	NRR ORB5 LA 04	1 1	DICK,G 01	1 1
INTERNAL:	ADM DISILVEST.	1 1	ASLAP 10	1 1
	ASLB 09	1 1	ELD/HDS4 06	1 1
	NRR/DL DIR	1 1	<u>REG FILE</u> 04	1 1
	RGN1	1 1	RM/DDAMI/MIB 08	1 1
	SECY/DSB	1 1	SSPB-JAMERSON,C	1 1
EXTERNAL:	ACRS 13	1 1	LPDR 03	1 1
	NRC PDR 02	1 1	NTIS 05	1 1
NOTES:		1 1		



ROCHESTER GAS AND ELECTRIC CORPORATION • 89 EAST AVENUE, ROCHESTER, N.Y. 14649



JOHN E. MAIER
VICE PRESIDENT

TELEPHONE
AREA CODE 716 546-2700

January 23, 1984

Director of Nuclear Reactor Regulation
ATTN: Mr. Dennis M. Crutchfield, Chief
Operating Reactors Branch #5
U. S. Nuclear Regulatory Commission
Washington, D. C. 20555

Subject: Rochester Gas and Electric Corporation Organization Restructure

Dear Mr. Crutchfield:

With the retirement of Leon D. White, Jr. as Executive Vice President of Rochester Gas and Electric Corporation there were several changes in our organization structure that affect the interface between our respective organizations. Effective February 1, 1984:

1. Harry G. Saddock was elected Executive Vice President - Finance and Rates.
2. John E. Maier was elected Senior Vice President - Operations and Engineering.
3. Roger W. Kober was elected Vice President - Electric and Steam Production.

I have enclosed a corporate organization chart for your information. As a result of these changes please direct all correspondence regarding our nuclear operations to Mr. Roger W. Kober effective February 1, 1984.

Very truly yours,


John E. Maier

Enc.

cc: Dr. Thomas E. Murley, Region I

8401300132 840123
PDR ADDCK 05000244
H PDR

m006
1/1



Faint, illegible text at the top of the page.

Second line of faint, illegible text.

Third line of faint, illegible text.

Fourth line of faint, illegible text.

Fifth line of faint, illegible text.

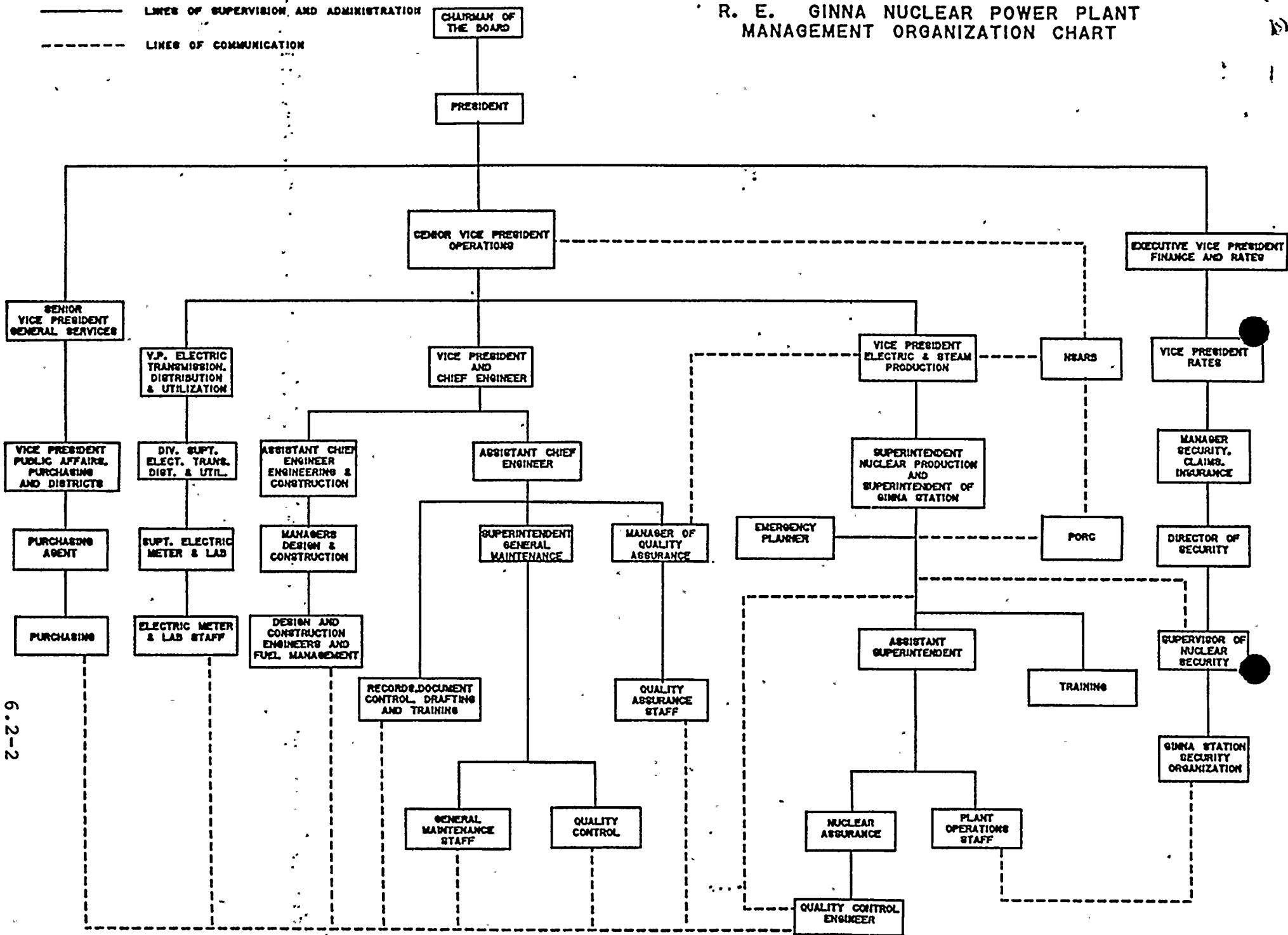
Sixth line of faint, illegible text.

Seventh line of faint, illegible text.

Eighth line of faint, illegible text.

Ninth line of faint, illegible text.

R. E. GINNA NUCLEAR POWER PLANT MANAGEMENT ORGANIZATION CHART



6.2-2

Figure 6.2-1

Amendment No. 33, 42, 58
PROPOSED

