

UNITED STATES  
NUCLEAR REGULATORY COMMISSION  
WASHINGTON, D. C. 20555

ROCHESTER GAS AND ELECTRIC CORPORATION

DOCKET NO. 50-244

R. E. GINNA NUCLEAR POWER PLANT

AMENDMENT TO PROVISIONAL OPERATING LICENSE

Amendment No. 58  
License No. DPR-18

1. The Nuclear Regulatory Commission (the Commission) has found that:
  - A. The application for amendment by Rochester Gas and Electric Corporation (the licensee) notarized September 28, 1982 as amended on January 11, 1983, complies with the standards and requirements of the Atomic Energy Act of 1954, as amended (the Act), and the Commission's rules and regulations set forth in 10 CFR Chapter I;
  - B. The facility will operate in conformity with the application, the provisions of the Act, and the rules and regulations of the Commission;
  - C. There is reasonable assurance (i) that the activities authorized by this amendment can be conducted without endangering the health and safety of the public; and (ii) that such activities will be conducted in compliance with the Commission's regulations;
  - D. The issuance of this amendment will not be inimical to the common defense and security or to the health and safety of the public;
  - E. The issuance of this amendment is in accordance with 10 CFR Part 51 of the Commission's regulations and all applicable requirements have been satisfied.

8311100096 831102  
PDR ADOCK 05000244  
P PDR

1952

1952


2. Accordingly, the license is amended by changes to the Technical Specifications as indicated in the attachment to this license amendment and Paragraph 2.C(2) of Provisional Operating License No. DPR-18 is hereby amended to read as follows:

(2) Technical Specifications

The Technical Specifications contained in Appendix A as revised through Amendment No. 58, are hereby incorporated in the license. The licensee shall operate the facility in accordance with the Technical Specifications.

3. This license amendment is effective as of the date of its issuance.

FOR THE NUCLEAR REGULATORY COMMISSION

  
Dennis M. Crutchfield, Chief  
Operating Reactors Branch #5  
Division of Licensing

Attachment:  
Changes to the Technical  
Specifications

Date of Issuance: November 2, 1983

ATTACHMENT TO LICENSE AMENDMENT NO. 58  
PROVISIONAL OPERATING LICENSE NO. DPR-18  
DOCKET NO. 50-244

Revise Appendix A Technical Specifications by removing the pages identified below and inserting the enclosed pages. The revised pages contain the captioned amendment number and marginal lines which indicate the area of changes.

<u>Remove Page</u>	<u>Add Page</u>
6.1-1	6.1-1
6.2-2	6.2-2
6.2-3	6.2-3
----	6.2-4
----	6.2-5
----	6.2-6
6.5-2	6.5-2

6.0 ADMINISTRATIVE CONTROLS

6.1 RESPONSIBILITY

6.1.1 The Station Superintendent shall be responsible for overall facility operation and shall delegate in writing the succession to this responsibility during his absence.

6.2 ORGANIZATION

OFFSITE

6.2.1 The offsite organization for facility management and technical support shall be as shown on Figure 6.2-1.

FACILITY STAFF

6.2.2 The Facility organization shall be as shown on Figures 6.2-2, 6.2-3, 6.2-4, & 6.2-5 and:

- a. Each on duty shift shall be composed of at least the minimum shift crew composition shown in Figures 6.2-3, 6.2-4, and 6.2-5.
- b. At least one licensed Operator shall be in the control room when fuel is in the reactor.

6.2-2

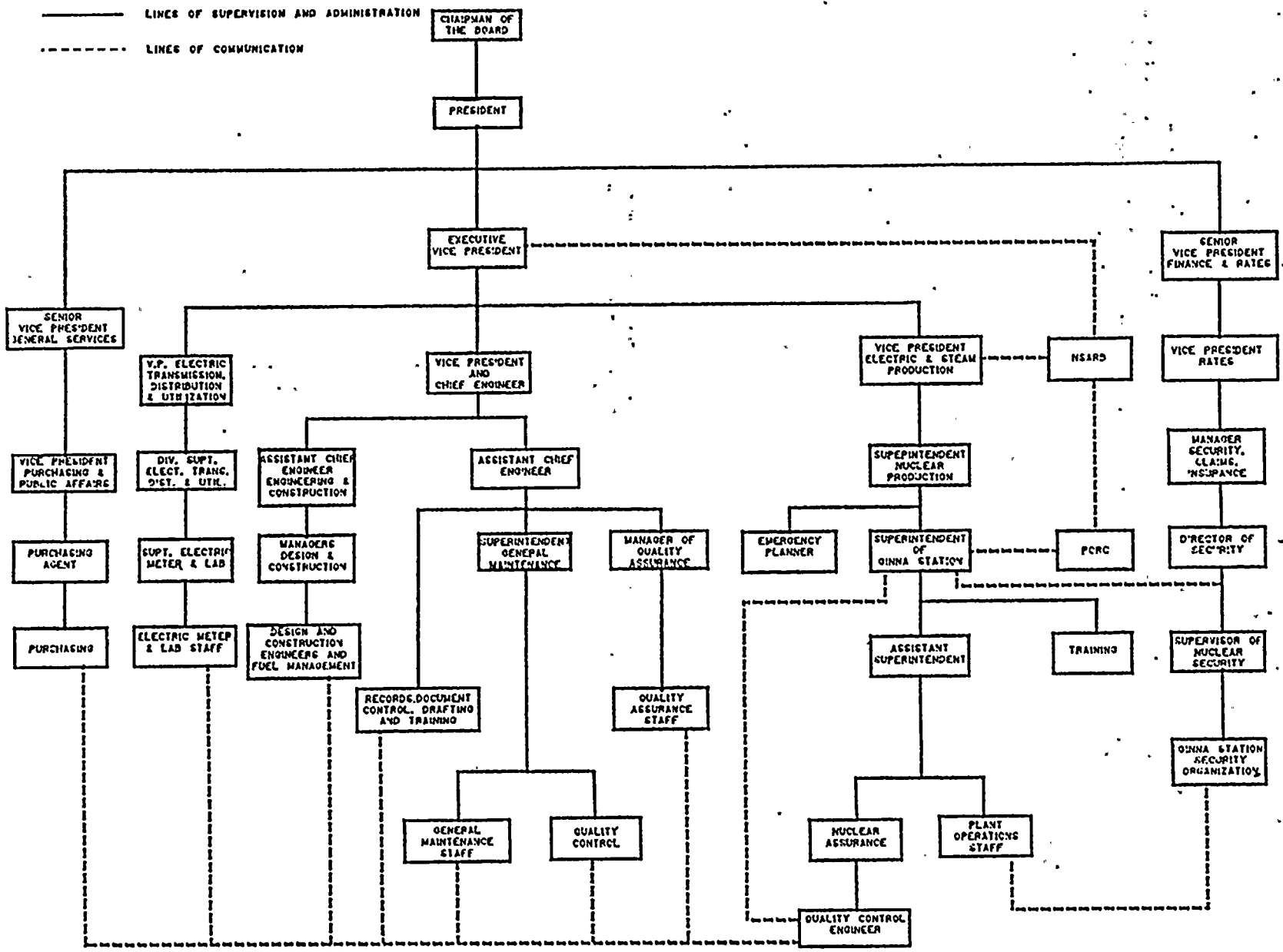
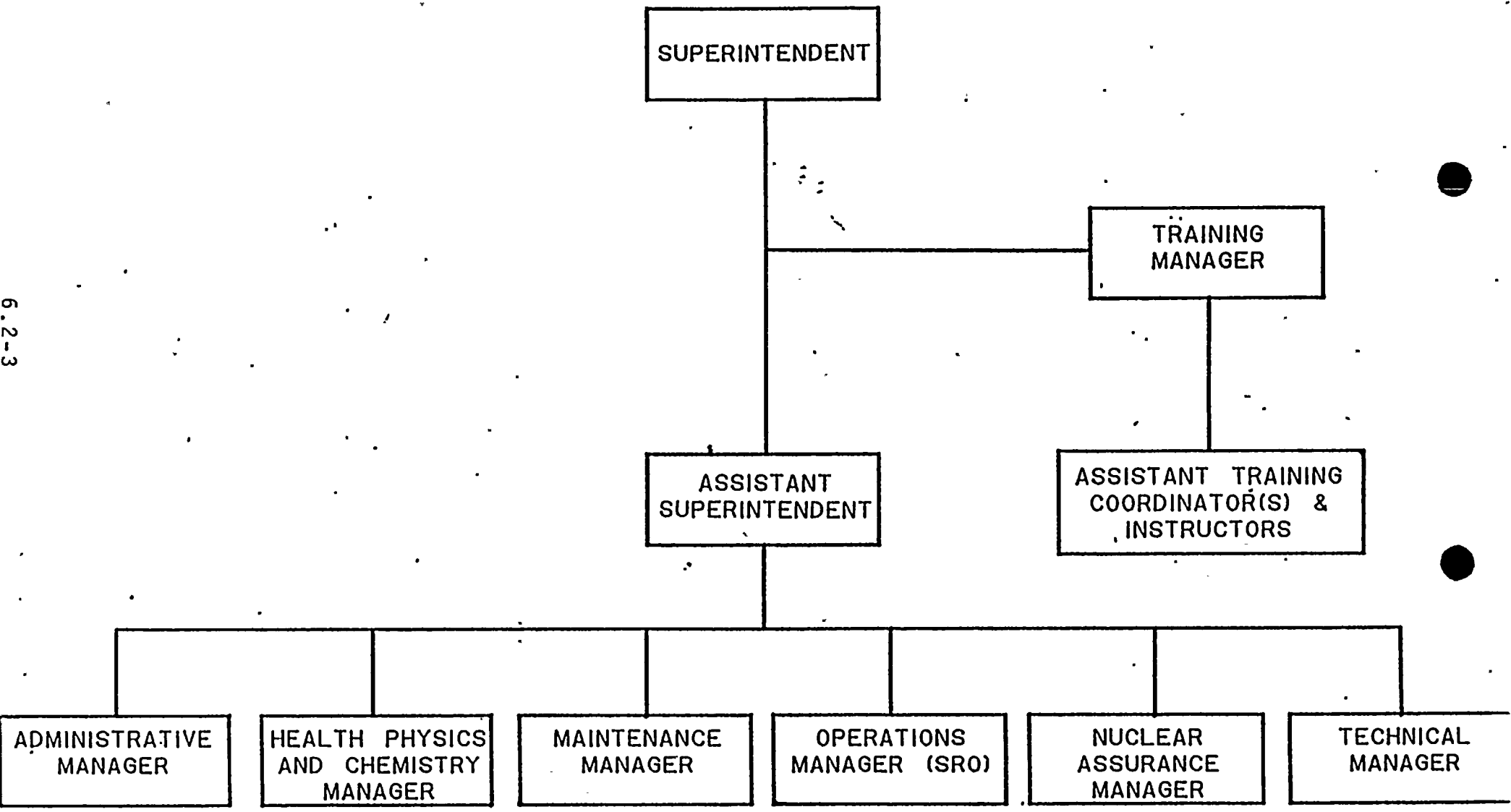


Figure 6.2-1 Rochester Gas and Electric Corporation management organization chart

# ROCHESTER GAS AND ELECTRIC CORPORATION

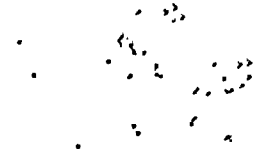
## R. E. GINNA STATION

### ORGANIZATION



6.2-3

Figure 6.2-2





# R. E. GINNA STATION

## ADMINISTRATIVE AND HEALTH PHYSICS & CHEMISTRY SECTIONS

### GROUP ORGANIZATIONS

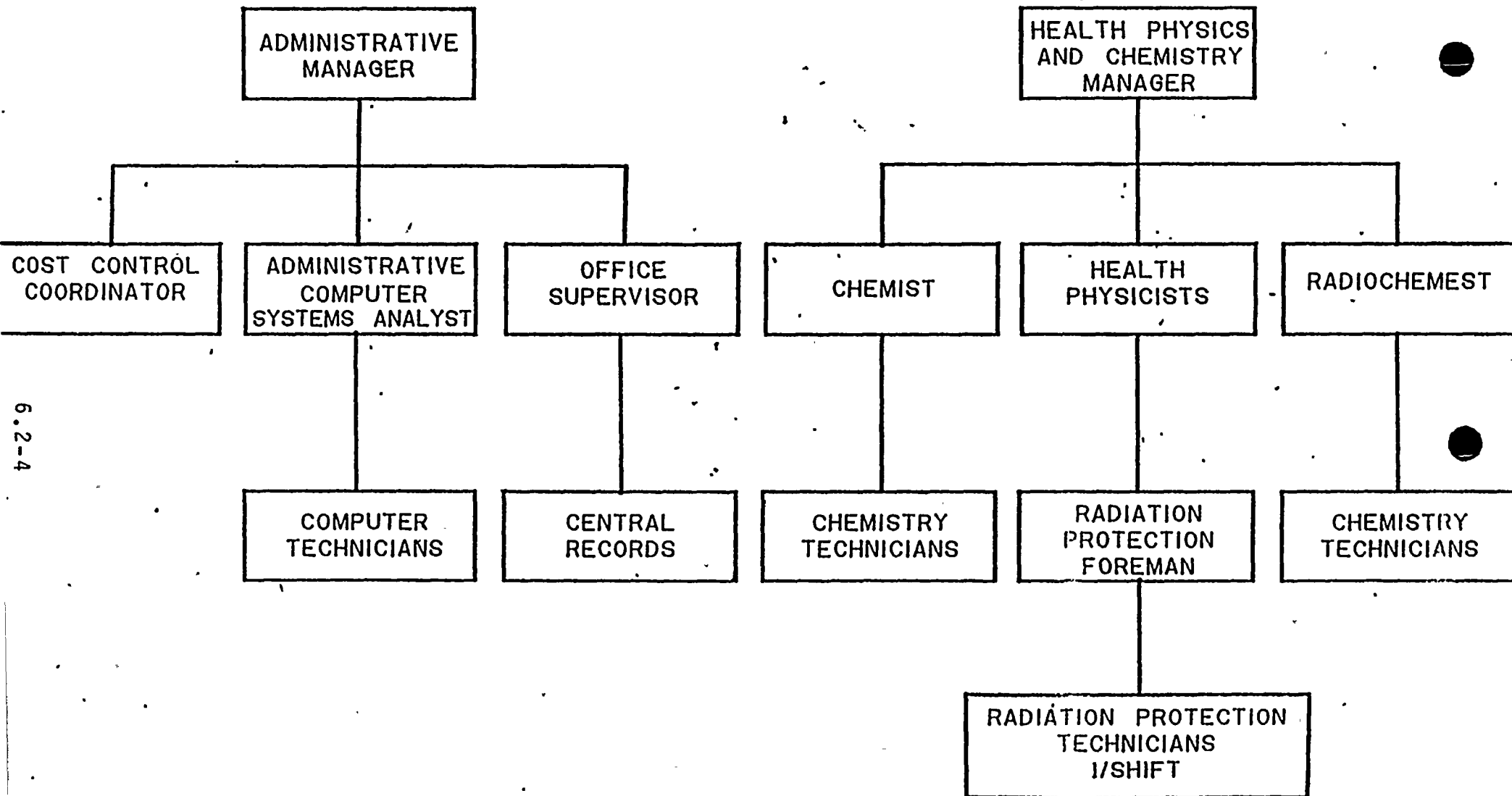
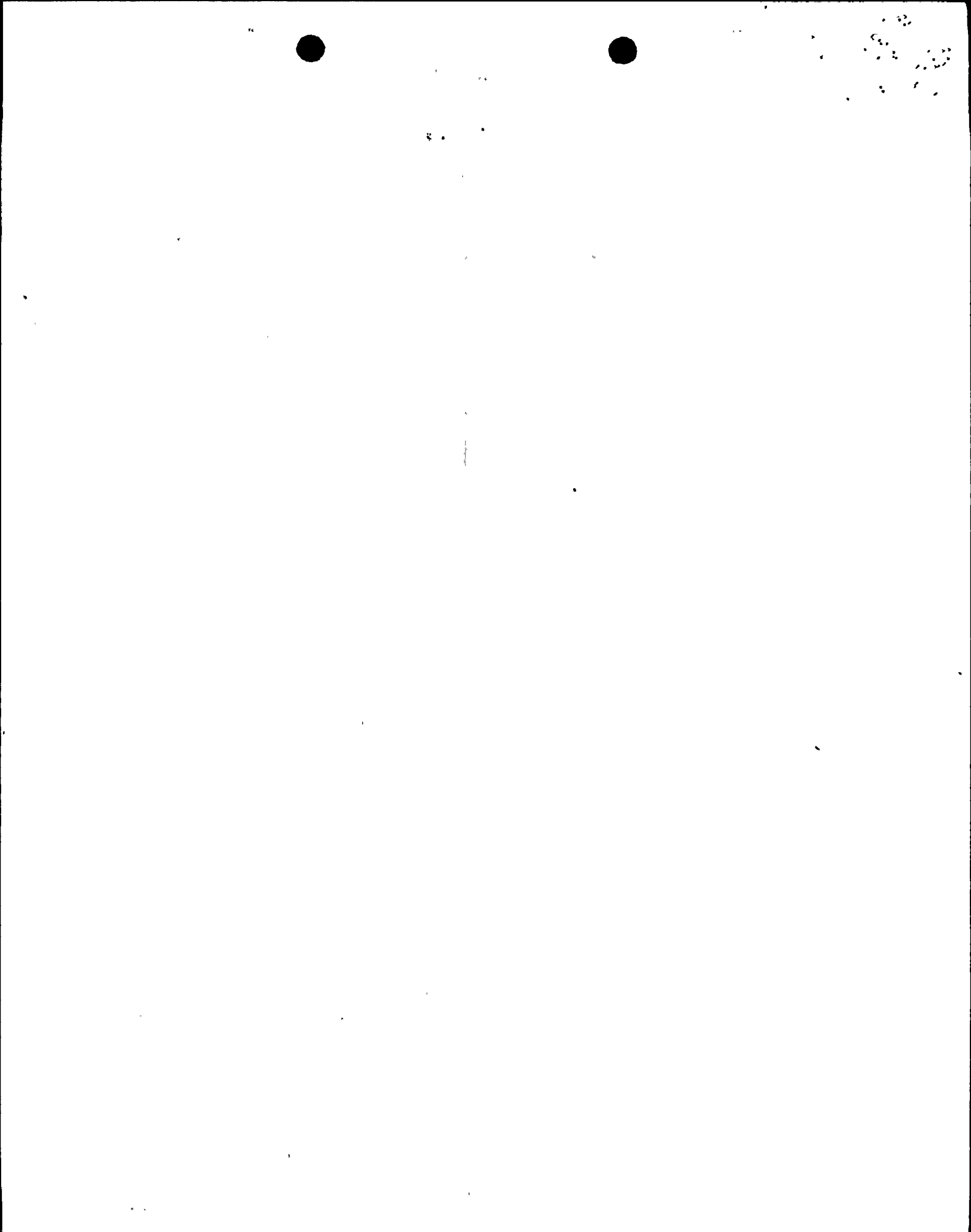


Figure 6-2-3

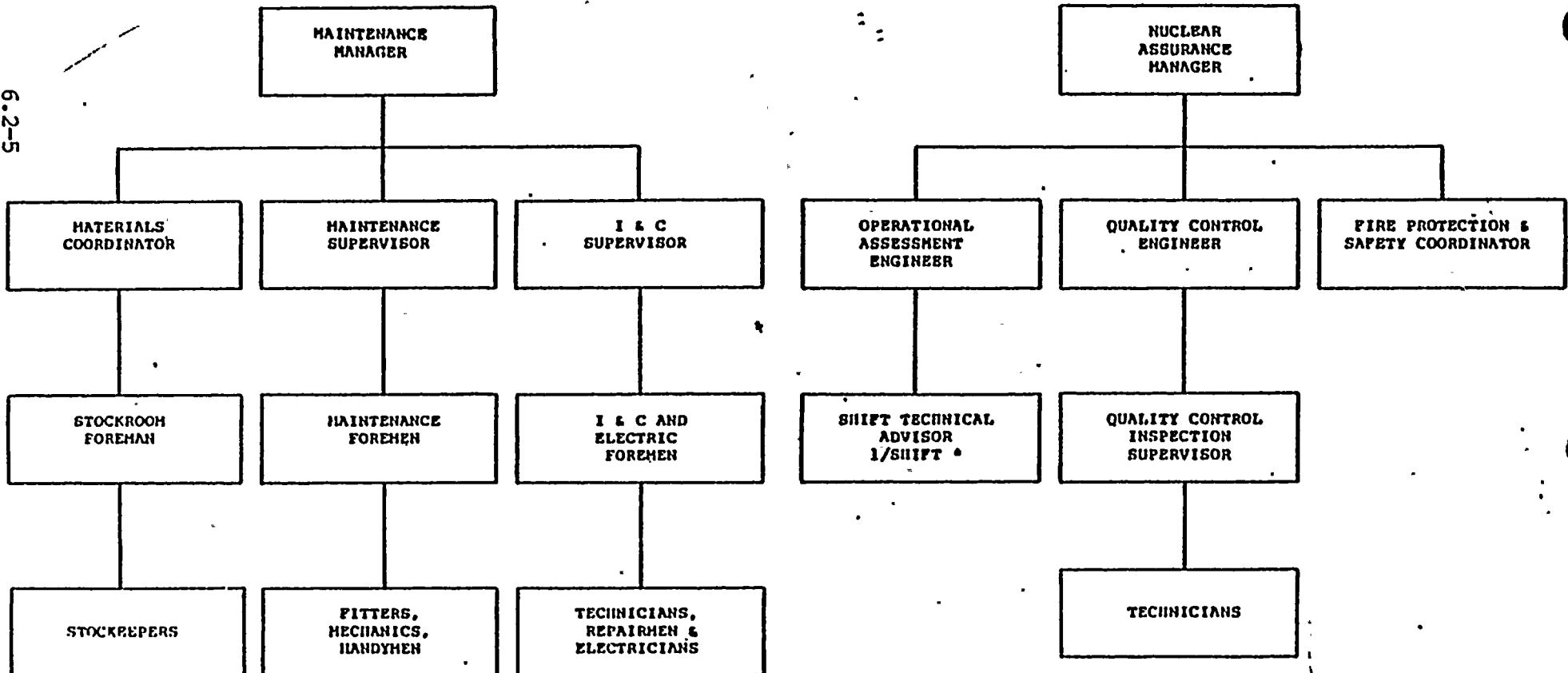
Attachment No.

6-2-4



**R. E. GINNA STATION**  
**MAINTENANCE AND NUCLEAR ASSURANCE SECTIONS**  
**GROUP ORGANIZATIONS**

6.2-5



\* When RCS average temperature > 200° F

Figure 6.2-4

Amendment No.58

# R. E. GINNA STATION

## OPERATIONS AND TECHNICAL SECTIONS

### ROUP ORGANIZATIONS

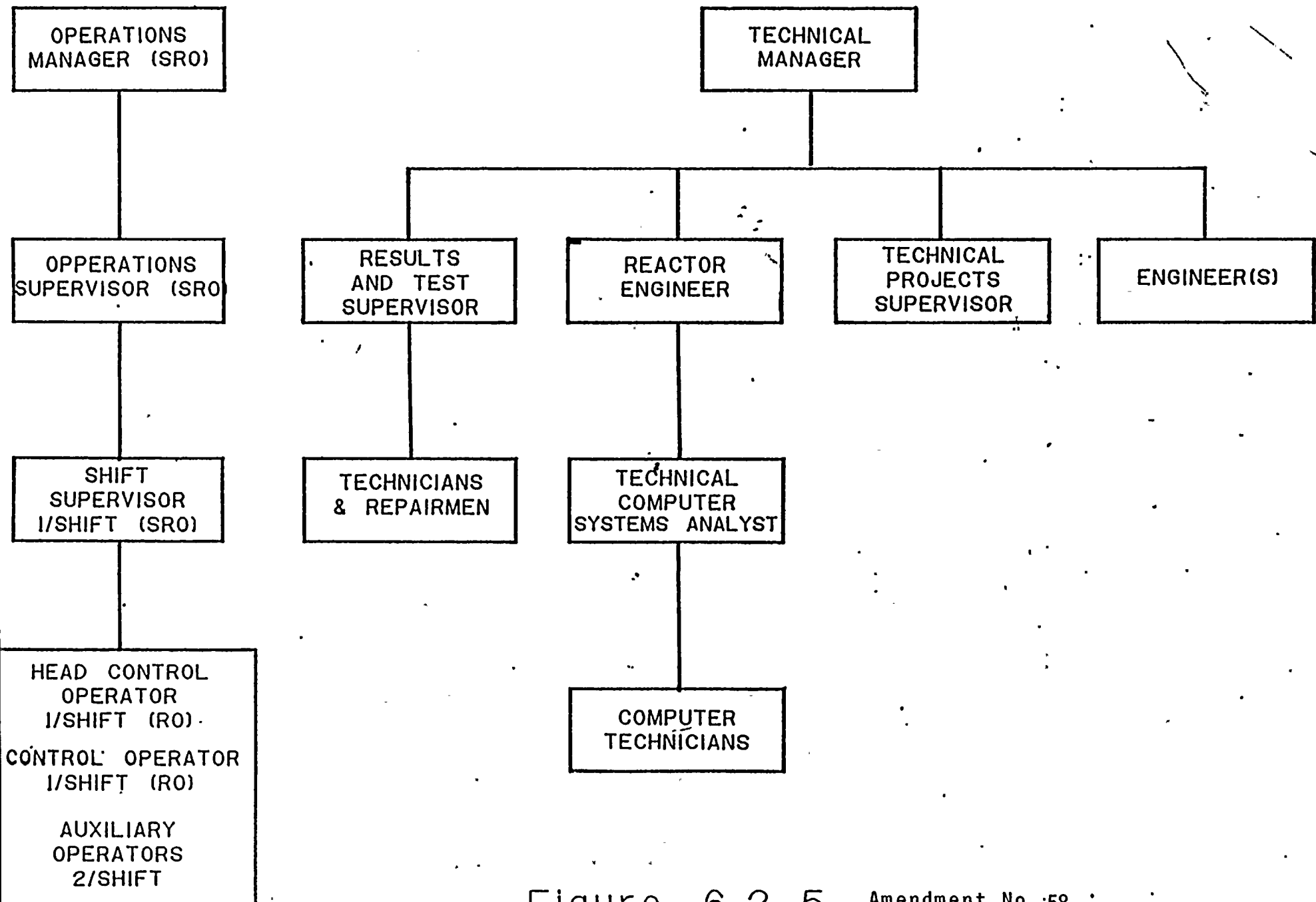


Figure A 2-5 Amendment No. 58

COMPOSITION

6.5.1.2 The PORC shall be composed of the;

Chairman: Superintendent  
Member: Assistant Superintendent  
Member: Operations Manager  
Member: Maintenance Manager  
Member: Instrument & Control Supervisor  
Member: Technical Manager  
Member: Results & Test Supervisor  
Member: Reactor Engineer  
Member: Health Physics and Chemistry Manager  
Member: Nuclear Assurance Manager  
Member: Quality Control Engineer

ALTERNATES

6.5.1.3 Alternate members shall be designated by name, in writing, by the Chairman.

MEETING FREQUENCY

6.5.1.4 The PORC shall meet at least once per calendar month and as convened by the PORC Chairman.

QUORUM

6.5.1.5 A quorum of the PORC shall consist of the Chairman and four members including alternates. No more than two shall be alternates.