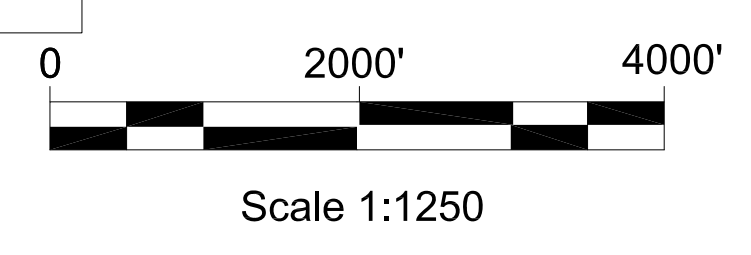
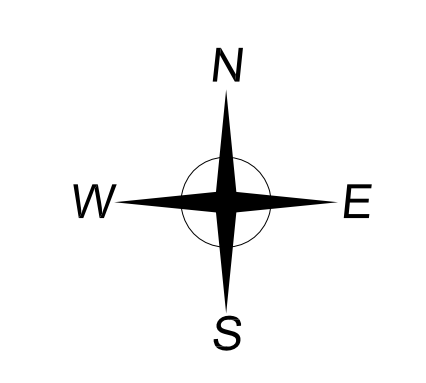
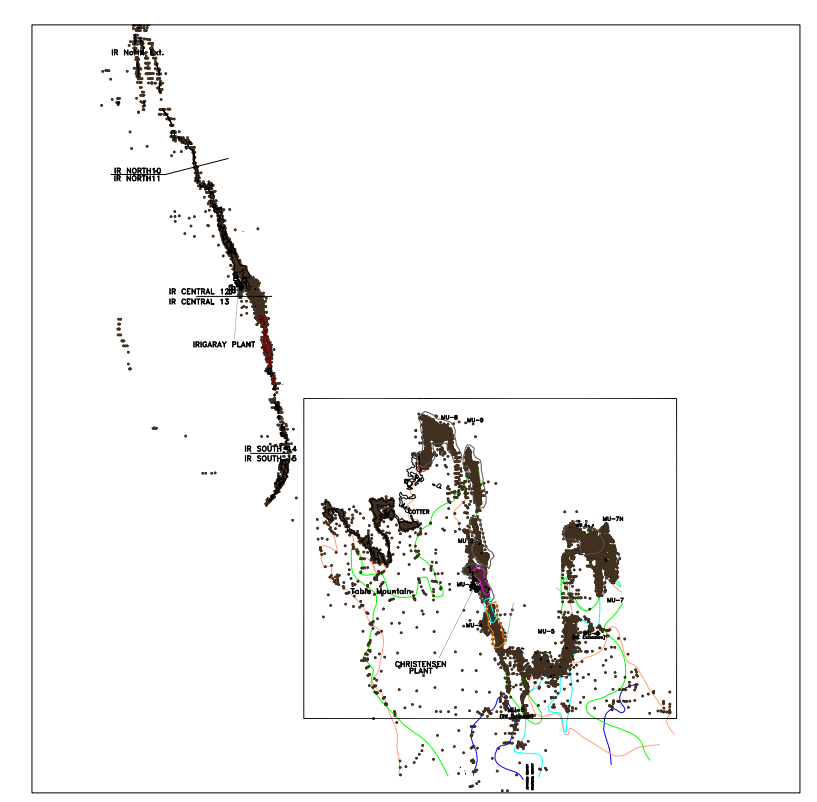



**Legend**

- Township Boundary
- Section Line
- County Line
- Monitor Wells
- Roads
- Two Track Roads
- Fence
- Permit Boundary
- Trunkline
- Powerline
- Incidental Boundary Revision Area
- Culvert
- Module Building  
May not be to scale
- Mining Area
- Monitor Ring
- Future Mining Area
- Proposed Mining Area
- Existing Wellfield Outline
- Future Wellfield Outline
- Proposed Wellfield Outline

**MAP LOCATION**



\*NOTE: TO INCREASE LEGIBILITY NOT ALL FACILITIES, STOCKPILES, etc., ARE TO SCALE



investing in our energy

907 North Poplar St., Suite 260, Casper, WY 82601 307-234-8235

**Christensen Project**  
**Area Facilities Location Map**  
 Permit to Mine #478  
 Johnson & Campbell Counties, Wyoming  
 2016-2017 Annual Report to WDEQ-LQD

Date: 08/10/2017	By: TM	Checked:	
Rev. No.:	Description:	Date:	By:
Rev	Revised for 2016-2017 Annual Rpt.	Aug. 2017	PAA
			Sheet: