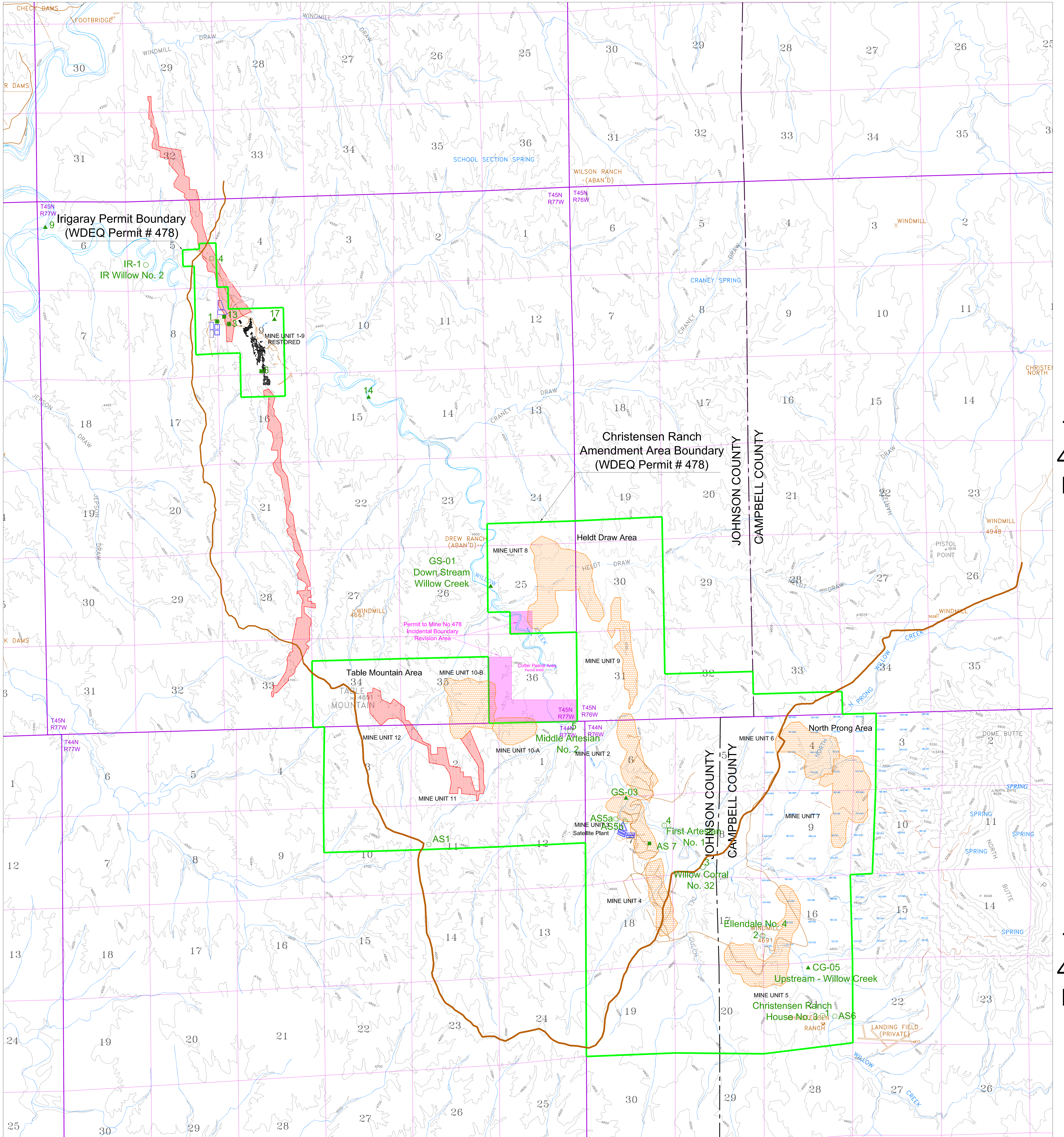


R 77 W

R 76 W



LEGEND

- Wellfield Access Roads
- Haul Road
- Wellfield Area - Existing
- Wellfield Area - Future
- Evaporation Ponds
- Topsoil Stockpile
- Incidental Boundary Revision Area
- Mine Unit 10 Incidental Boundary Revision
- Air Sample Location (Radon and Particulate)
- Air Sample Location (Radon and Particulate)
- Vegetation Sample Location
- Soil Sample Location
- Direct Radiation Monitor Location
- Air Sample Location (Radon)
- Vegetation Sample Location
- Soil Sample Location
- Direct Radiation Monitor Location
- Stock & Domestic Well Sample Location
- Regional Groundwater Monitoring Location
- Upstream & Downstream Surface Water Sample Location

R 77 W

R 76 W

uraniumone
investing in our energy
907 North Poplar St., Suite 260, Casper, WY 82601 307-234-8235

**Irigaray & Christensen Ranch
Environmental Monitoring
Station Locations
Permit to Mine #478
2016-2017 Annual Report to WDEQ-LQD**

Date:	August 2017	By:	CM August 2009	Checked:	
Rev. No.	1	Description	Date	By	Sheet
	1	Updated 2009 CME Original for 2010	August, 2010	CEO: U1	
	2	Moved location of GS-01	August, 2010	CEO: U1	
	3	Incidental Boundary Revision	April 2012	U1	
	4	MU10 Incidental Boundary Revision	August 2012	CEO	

