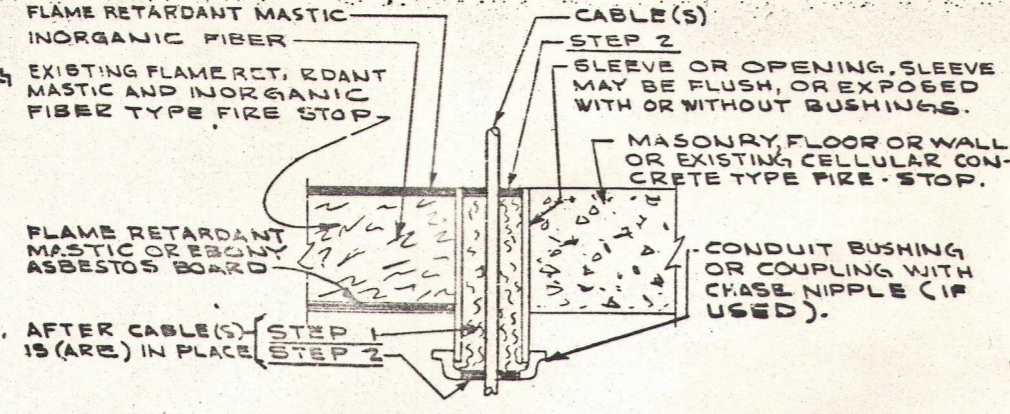
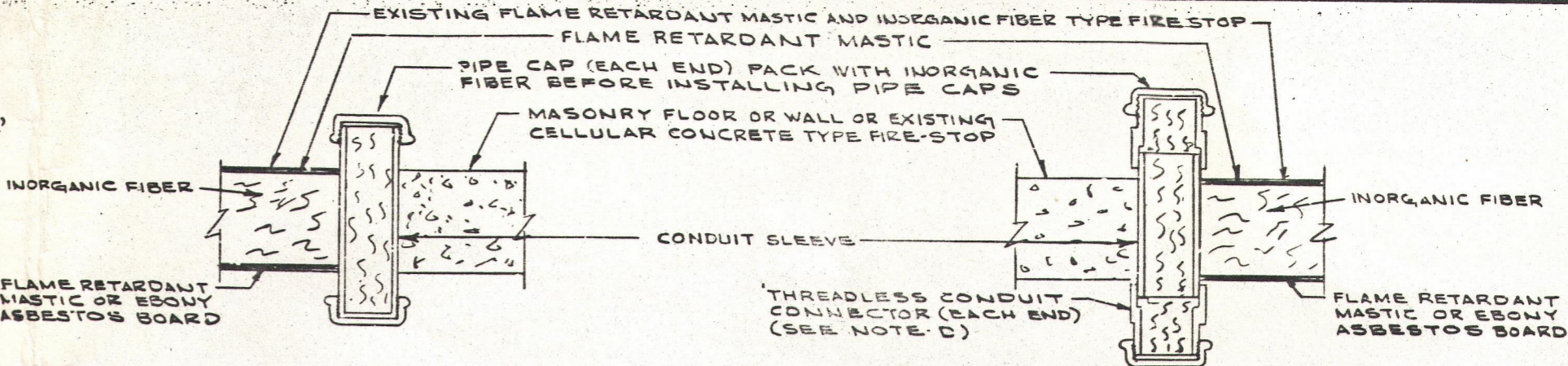


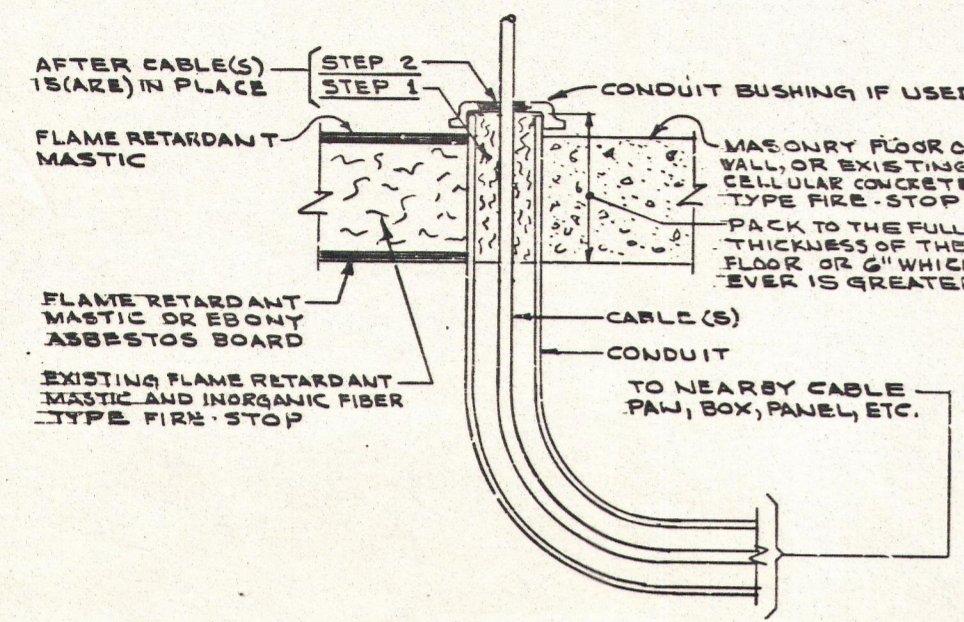
**DETAIL 1**  
SLEEVE THRU FIRE STOP AT BASE OF CONTROL BOARD



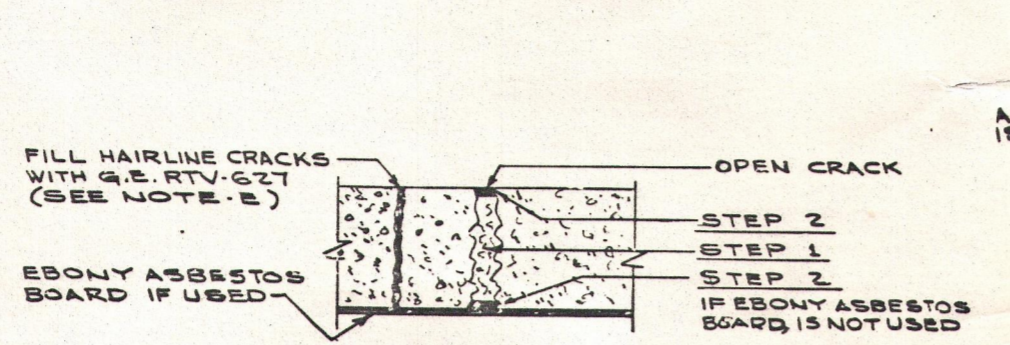
**DETAIL 2**  
CABLE OPENING WITH OR WITHOUT CONDUIT SLEEVE



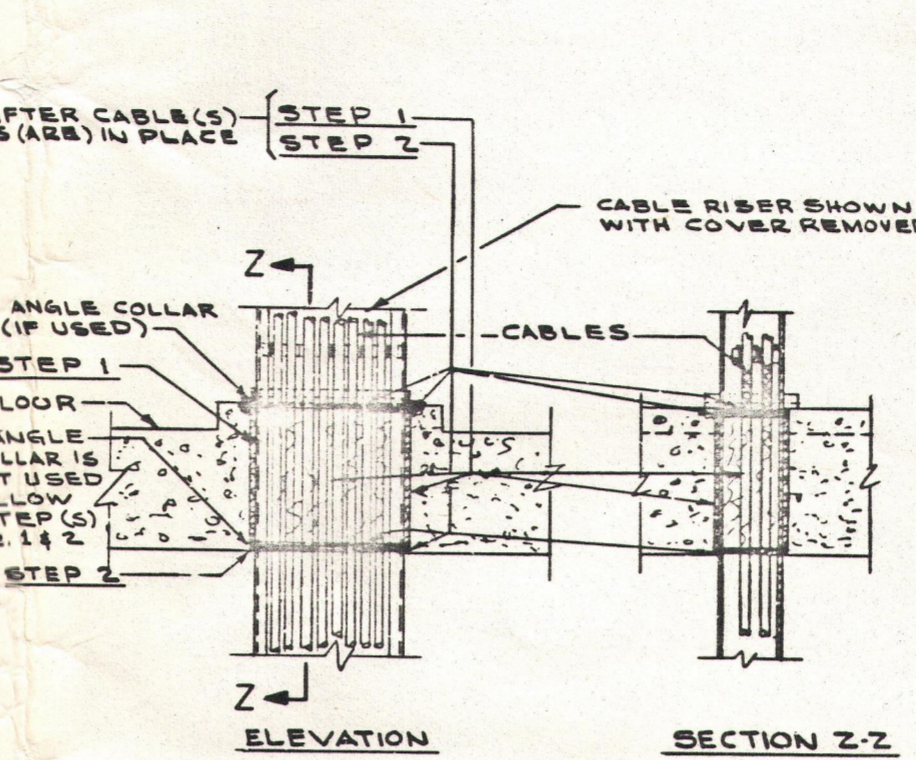
**DETAIL 3** SLEEVES WITH THREADED ENDS  
**DETAIL 4** SLEEVES WITH THREADLESS ENDS



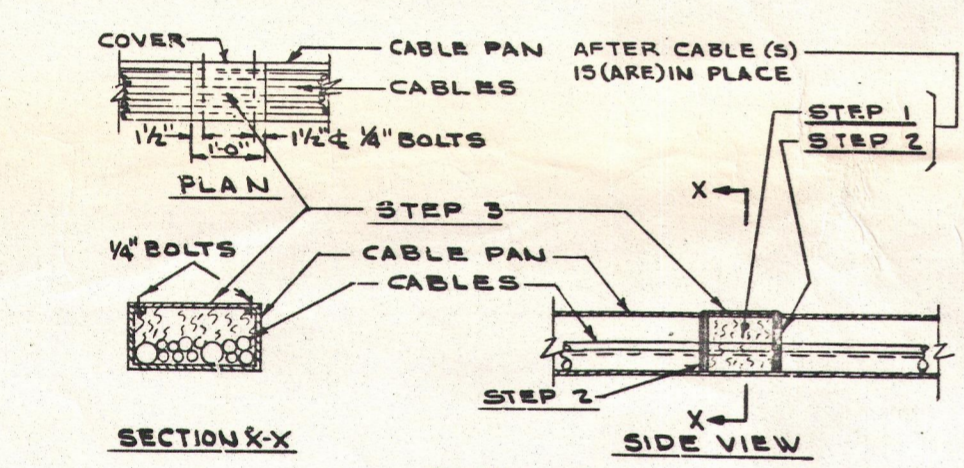
**DETAIL 5**  
CONDUITS LESS THAN 8'-0" IN LENGTH



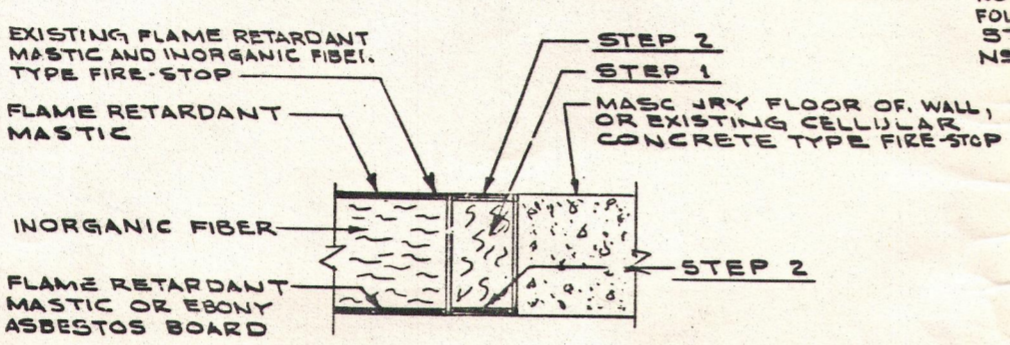
**DETAIL 6**  
CRACK IN EXISTING CELLULAR CONCRETE FIRE-STOP



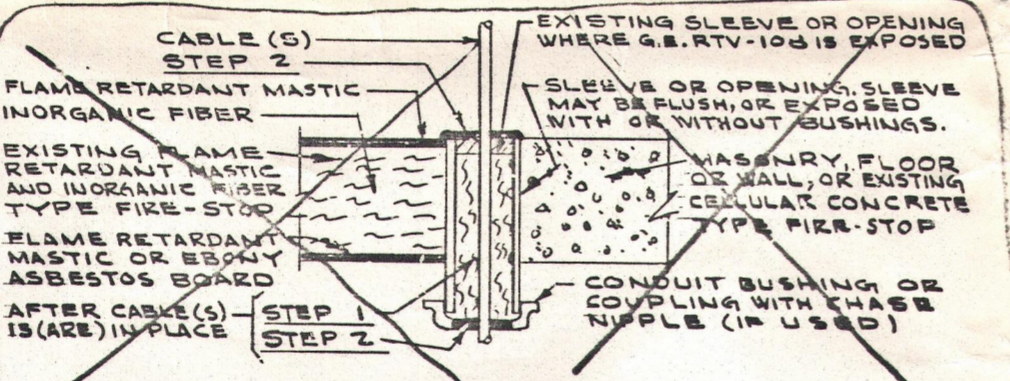
**DETAIL 8**  
CABLE TRAY RISER THROUGH FLOOR



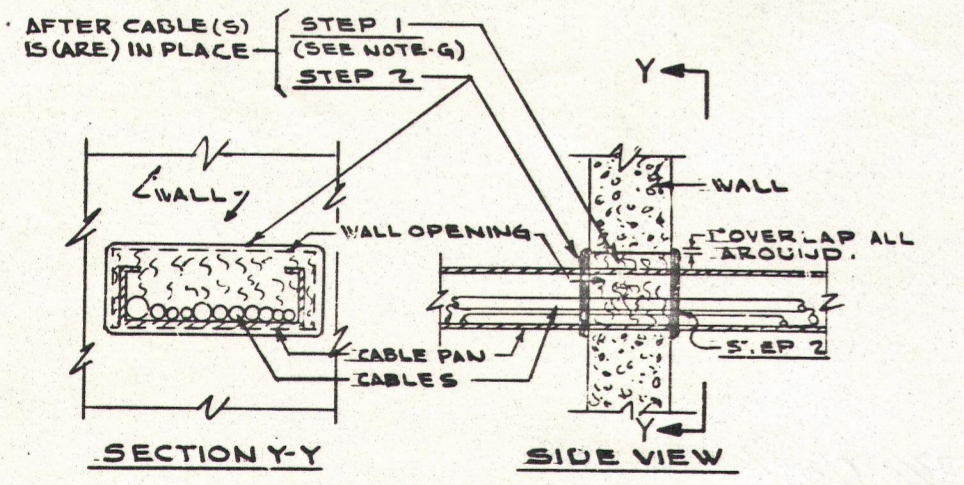
**DETAIL 9**  
DIFFERENT ESS DIVISIONS IN SAME CABLE PAN



**DETAIL 7**  
UNUSED CABLE OPENING WITH OR WITHOUT FLUSH CONDUIT SLEEVE



**DETAIL 11**  
EXISTING CABLE OPENING PREVIOUSLY SEALED WITH G.E. RTV-103 SEALANT  
NOT APPLICABLE AT ZION



**DETAIL 10**  
CABLE PAN THROUGH WALL

**INSTALLATION NOTES**

THE FOLLOWING STEP(S) SHALL BE FOLLOWED ONLY WHERE CALLED OUT IN THE DETAIL BEING USED.  
STEP 1. PACK WITH INORGANIC FIBER (SEE NOTE-B)  
STEP 2. APPLY FLAME RETARDANT MASTIC (SEE NOTE-C)  
STEP 3. FIELD DRILL CABLE PAN AND COVER, AND SECURE COVER WITH 1/4" ROUND HEAD BOLTS WITH LOCK WASHERS AND NUTS. HEAD OF BOLT TO BE INSIDE CABLE PAN. (SEE NOTE-F)

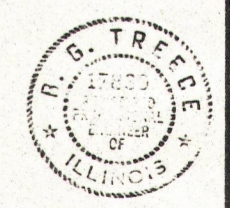
**MATERIAL NOTES**

- A. GENERAL ELECTRIC CO. RTV-124 SILICONE SEALANT HAS TESTED EQUIVALENT TO UL RATING 94V-0.
- B. INORGANIC FIBER SHALL BE JOHNS-MANVILLE CERAFIBER OR BABCOCK & WILCOX KAOWOOL BRAND OF CERAMIC FIBER.
- C. FLAME RETARDANT MASTIC SHALL BE FLAMEMASTIC TIA "BY THE FLAMEMASTER CORP. SUN VALLEY, CALIF. AND SHALL BE APPLIED APPROX 1/4" THICK (OR FUTURE MATERIAL SUCH AS VIMASCO CABLE COATING #1).
- D. THREADLESS CONNECTOR SHALL BE APPLETON ELECTRIC CO. TYPE NTC OR APPROVED EQUAL.
- E. GENERAL ELECTRIC CO. RTV-627 SILICONE SEALANT HAS TESTED EQUIVALENT TO UL RATING 94V-0.
- F. COVER SHALL BE GALVANIZED SHEET METAL OF THE SAME GAUGE AS THE CABLE PAN.
- G. INORGANIC FIBER SHALL BE PACKED TO THE FULL THICKNESS OF THE WALL OR 1'-0" WHICHEVER IS GREATER.

**GENERAL NOTES**

- 1. ALL FOREIGN MATERIAL, SUCH AS WOOD OR FOAM PLASTIC CONSTRUCTION FORMS, SHALL BE REMOVED FROM THE IMMEDIATE AREA OF EXISTING OR NEW FIRE-STOP. ALL PUTTY TYPE "DUCT SEALING" COMPOUNDS NOT SPECIFIED ON THIS DRAWING SHALL BE REMOVED. IF THE FIRE STOP IS DAMAGED IN ANY WAY IN THE PROCESS OF REMOVING THIS FOREIGN MATERIAL, THE FIRE STOP SHALL BE REPAIRED IN ACCORDANCE WITH THE APPROPRIATE DETAIL ON THIS DRAWING.
- 2. FOR GENERAL NOTES SEE DWGS 22E-1-3139, 22E-1-3140, 22E-1-3401

**CLASS-I**  
INSTALLATION



DRAWING RELEASE RECORD			DRAWN		CHECKED		ENGR. APPROVAL	
REV.	DATE	DESCRIPTION	BY	DATE	BY	DATE	BY	DATE
A	9-3-75	REVISED PER PERMITS						

SCALE: NONE		DRAWN: EDNAE OZGUR 9-3-75	
CHECKED: S. G. TRECCE 9/3/75		ENGINEER: S. G. TRECCE 9/3/75	
APPROVED: S. G. TRECCE 9/3/75		DRAWING NO. 22E-0-3130	
JOB NO. 3782-118		JOB NO. 3678-118	

**ELECTRICAL INSTALLATION**  
**AIR SEALS AND FIRE STOPS**  
**ZION STATION UNITS 1&2**  
**COMMONWEALTH EDISON CO.**  
**CHICAGO, ILLINOIS**



Control of Data  
REGULATORY DOCKET FILE