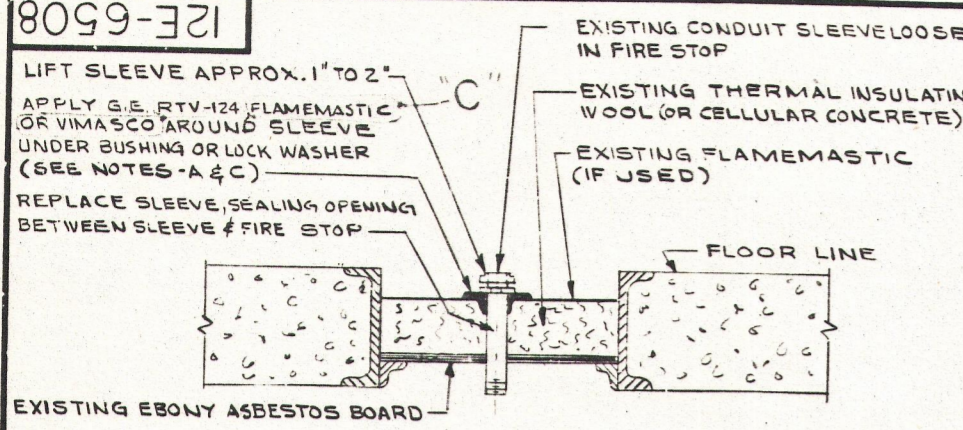
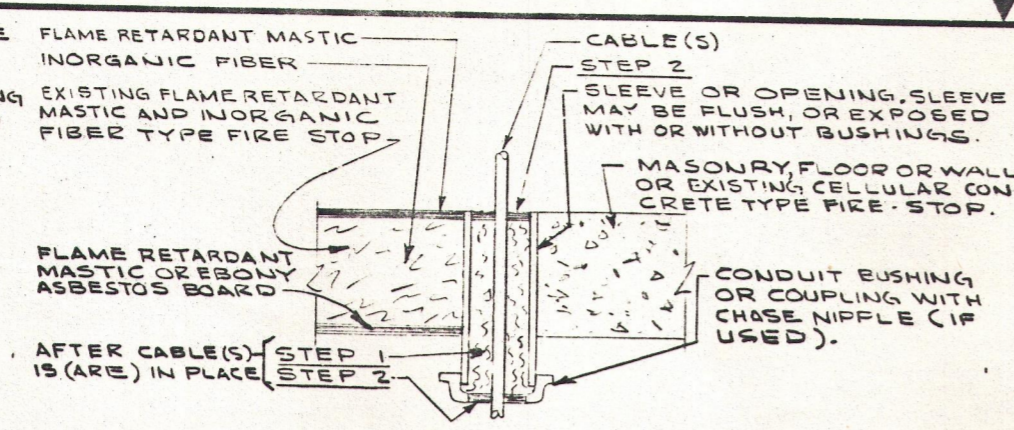


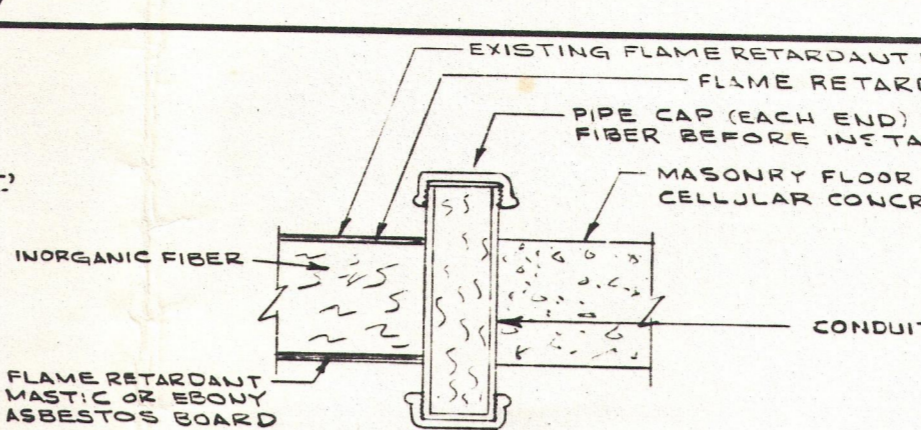
12E-6508



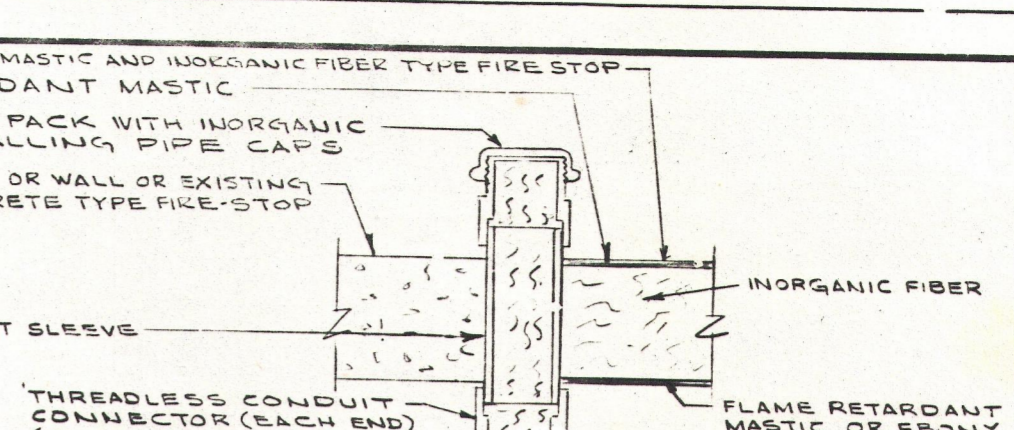
DETAIL 1
SLEEVE THRU FIRE STOP AT BASE OF CONTROL BOARD



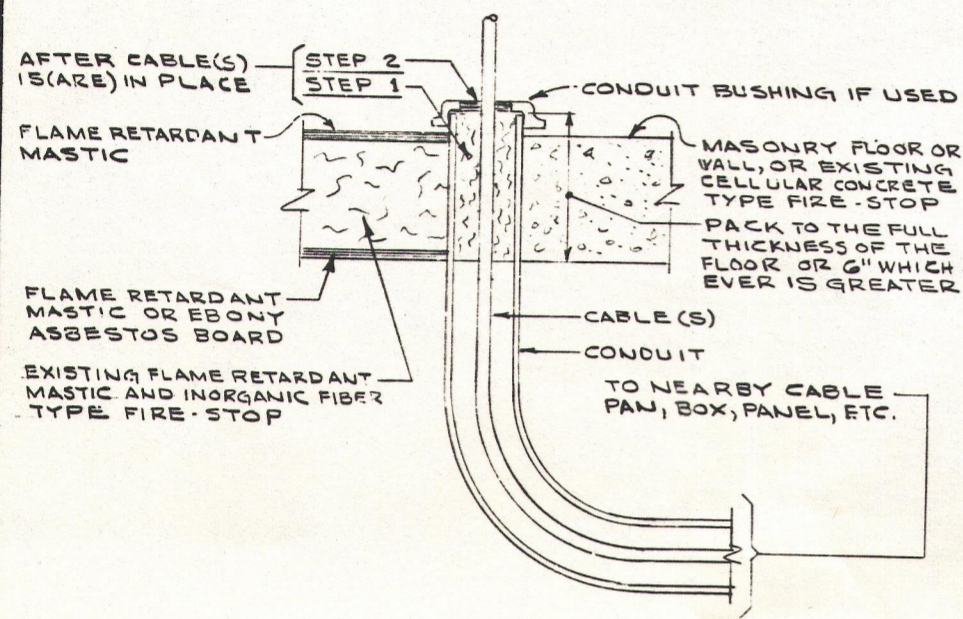
DETAIL 2
CABLE OPENING WITH OR WITHOUT CONDUIT SLEEVE



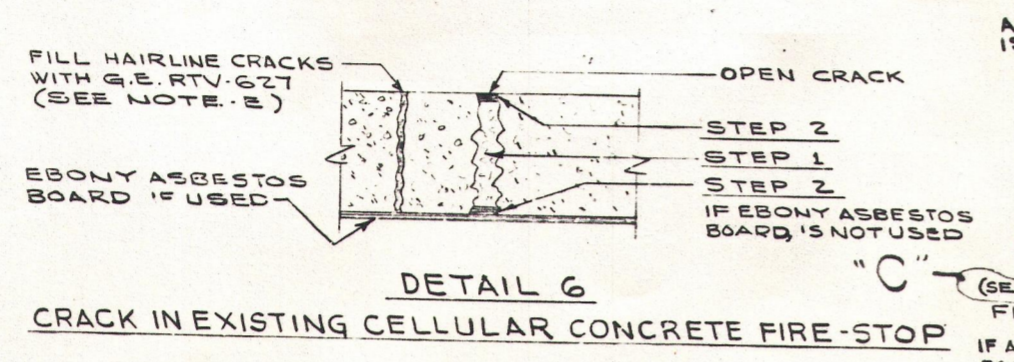
DETAIL 3
SLEEVES WITH THREADED ENDS



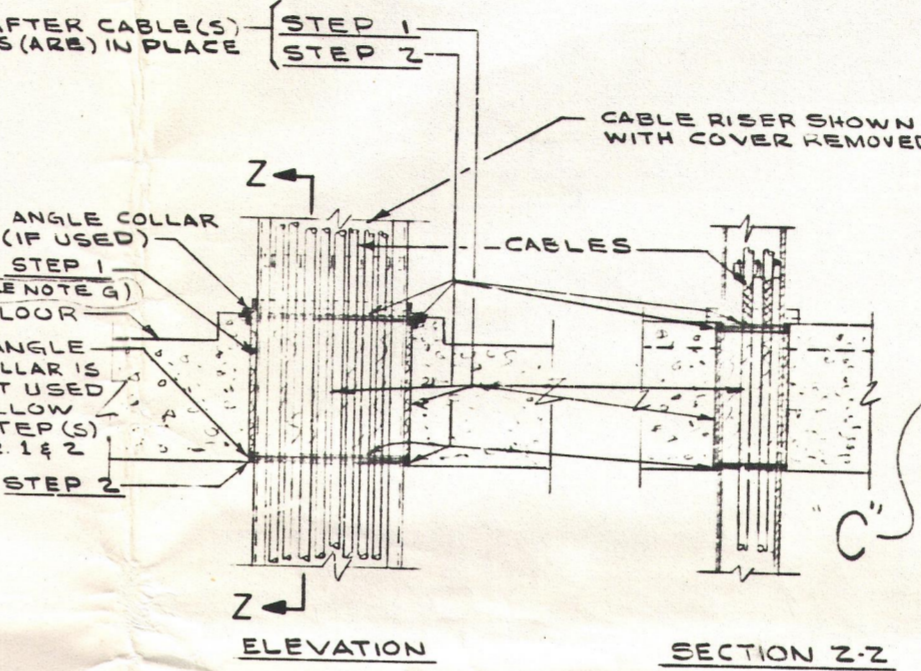
DETAIL 4
SLEEVES WITH THREADLESS ENDS



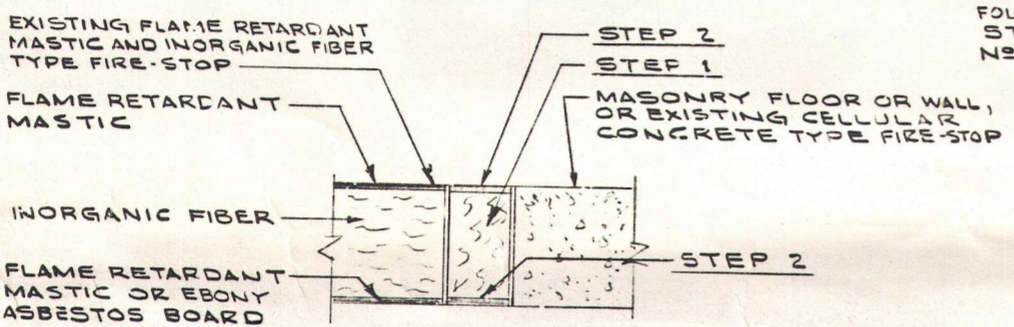
DETAIL 5
CONDUITS LESS THAN 8'-0" IN LENGTH



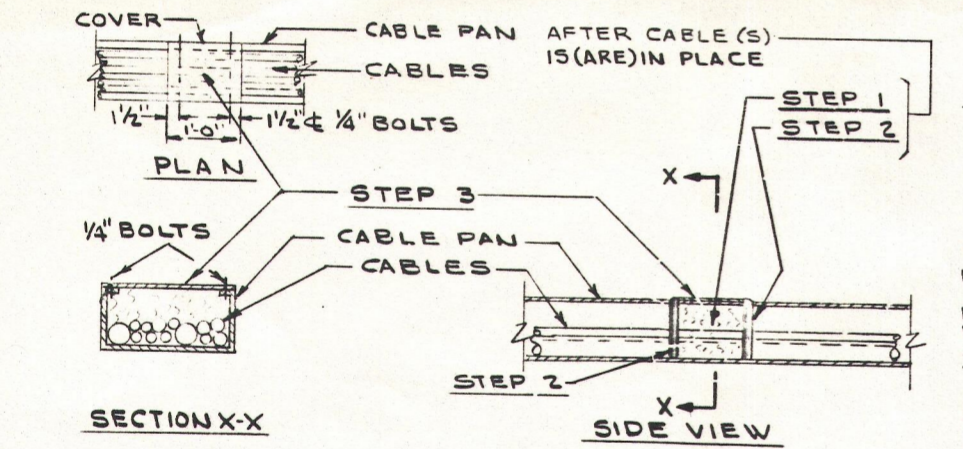
DETAIL 6
CRACK IN EXISTING CELLULAR CONCRETE FIRE-STOP



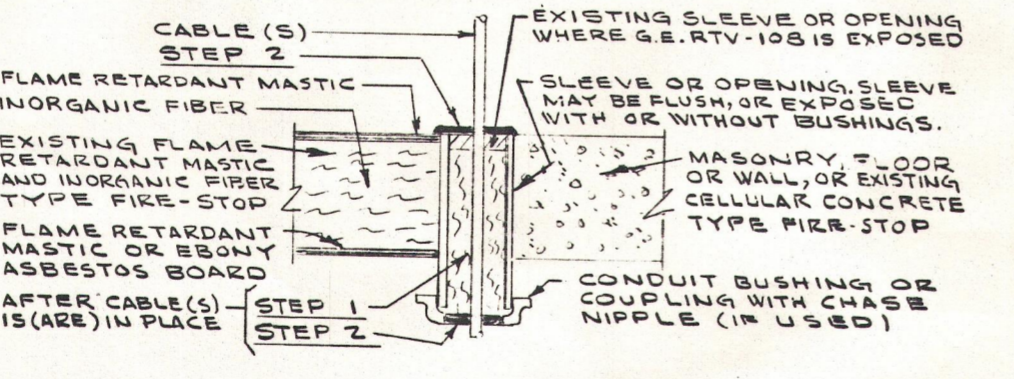
DETAIL 8
CABLE TRAY RISER THROUGH FLOOR



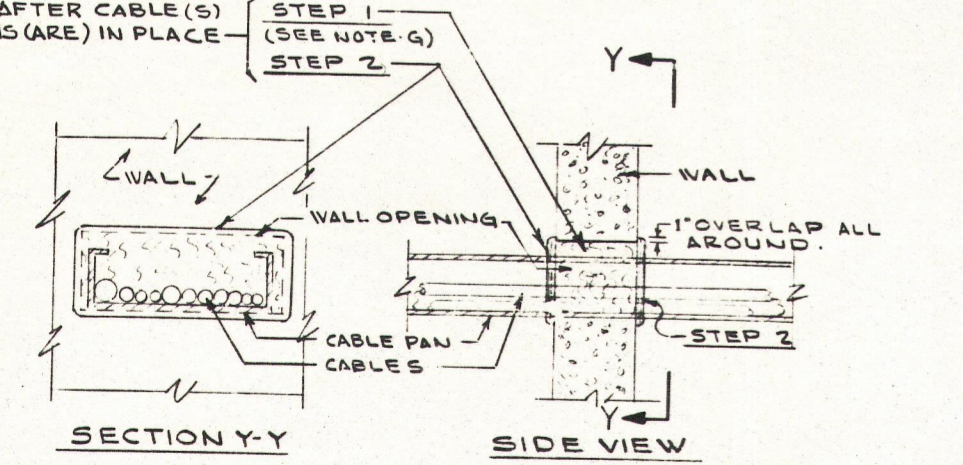
DETAIL 7
UNUSED CABLE OPENING WITH OR WITHOUT FLUSH CONDUIT SLEEVE



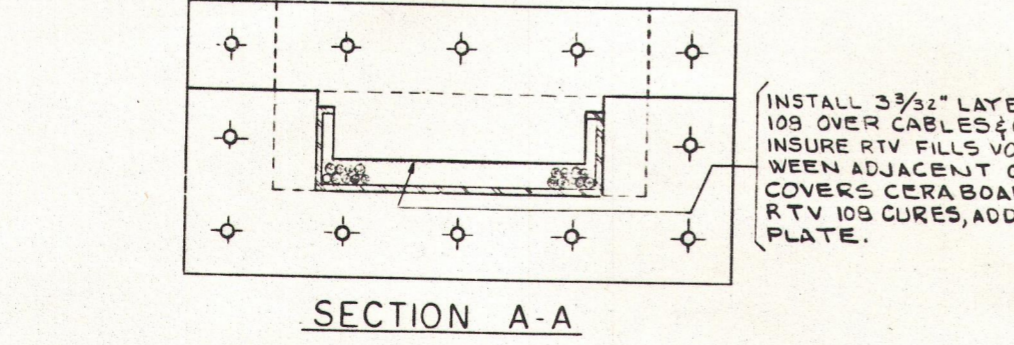
DETAIL 9
DIFFERENT ESS DIVISIONS IN SAME CABLE PAN



DETAIL 11
EXISTING CABLE OPENING PREVIOUSLY SEALED WITH G.E. RTV-108 SEALANT



DETAIL 10
CABLE PAN THROUGH WALL



DETAIL 12
CABLE PAN THROUGH WALL

INSTALLATION NOTES

THE FOLLOWING STEP(S) SHALL BE FOLLOWED ONLY WHERE CALLED OUT IN THE DETAIL BEING USED.

STEP 1. PACK WITH INORGANIC FIBER (SEE NOTE B)

STEP 2. APPLY FLAME RETARDANT MASTIC (SEE NOTE C)

STEP 3. FIELD DRILL CABLE PAN AND COVER, AND SECURE COVER WITH 1/2" Ø ROUND HEAD BOLTS WITH LOCK WASHERS AND NUTS, HEAD OF BOLT TO BE INSIDE CABLE PAN. (SEE NOTE F)

MATERIAL NOTES

A. GENERAL ELECTRIC CO. RTV-124 SILICONE SEALANT HAS TESTED EQUIVALENT TO UL RATING 94V-0.

B. INORGANIC FIBER SHALL BE JOHNS-MANVILLE CERAFIBER, CERABLANKET, CERAFORM; OR BABCOCK & WILCOX KAOWOOL BRAND OF CERAMIC FIBER.

C. FLAME RETARDANT MASTIC SHALL BE "FLAMEMASTIC 71A" BY THE FLAMEMASTER CORP. SUN VALLEY, CA, IF AND SHALL BE APPLIED APPROX. 1/4" THICK OR VIMASCO CABLE COATING #1A, BY VIMASCO CORP. NITRO WEST VIRGINIA, AND SHALL BE APPLIED APPROX. 1/8" THICK WET (APPROX. 1/16" THICK AFTER DRYING).

D. THREADLESS CONNECTOR SHALL BE APPLETON ELECTRIC CO. TYPE NTC OR APPROVED EQUAL.

E. GENERAL ELECTRIC CO. RTV-627 SILICONE SEALANT HAS TESTED EQUIVALENT TO UL RATING 94V-0.

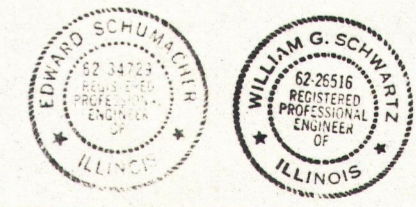
F. COVER SHALL BE GALVANIZED SHEET METAL OF THE SAME GAUGE AS THE CABLE PAN.

G. INORGANIC FIBER SHALL BE PACKED TO THE FULL THICKNESS OF THE WALL OR FLOOR OR 1'-0" WHICHEVER IS GREATER, IN EXTRA DEEP FLOOR OR WALL SECTIONS IT IS ALLOWABLE TO PACK INORGANIC FIBER TO A MINIMUM THICKNESS OF 1'-0" RATHER THAN THE FULL THICKNESS OF THE SECTION.

H. FIRE-X GLASSBOARD IS MANUFACTURED BY KEMLITE CORP. JOLIET ILL. AND HAS A CLASS A FLAME SPREAD RATING OF 15 PER ASTM E-84.

GENERAL NOTES

I. ALL FOREIGN MATERIAL, SUCH AS WOOD OR FOAM PLASTIC CONSTRUCTION FORMS, SHALL BE REMOVED FROM THE IMMEDIATE AREA OF EXISTING OR NEW FIRE STOPS; ALL PUTTY TYPE "DUCT SEALING" COMPOUNDS NOT SPECIFIED ON THIS DRAWING SHALL BE REMOVED, IF THE FIRE STOP IS DAMAGED IN ANY WAY IN THE PROCESS OF REMOVING THIS FOREIGN MATERIAL THE FIRE STOP SHALL BE REPAIRED IN ACCORDANCE WITH THE APPROPRIATE DETAIL ON THIS DRAWING.



REV.	DATE	DESCRIPTION	DRAWN	CHECKED	ENGR. APPROVAL
B	8-20-76	ADD TWO 3/32\"/>	W. C. HICKEY		
C	3-16-77	DCR 70-105 W/10-10-40 FOR RECORD	W. C. HICKEY		

ELECTRICAL INSTALLATION

AIR-SEALS AND FIRE-STOPS
DRESDEN NUCLEAR POWER STATION
COMMONWEALTH EDISON CO.
CHICAGO, ILLINOIS

SCALE: NONE

DRAWN: WM. C. HICKEY 3-29-75

CHECKED: [Signature] 3-29-75

ENGINEER: [Signature] 3-3-75

APPROVED: [Signature] 3-3-75

JOB NO. 358.00 359.00 434.13

DRAWING NO. 12E-6508

SARGENT & LUNDY
ENGINEERS
CHICAGO

Doc# 10-237/249/251/265
Control # 10-298/304
Date 4/1/78
REGULATORY DOCKET FILE

24X