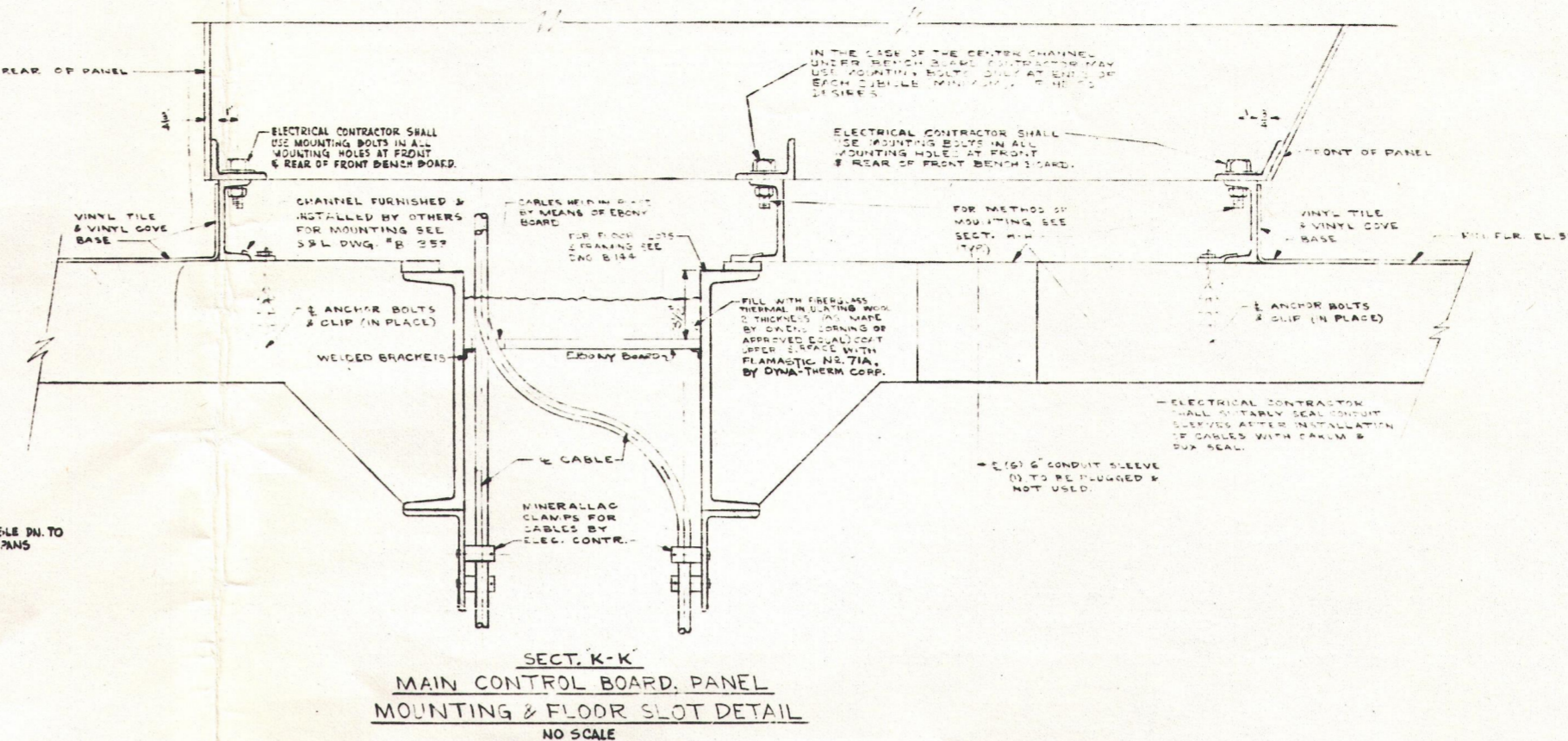
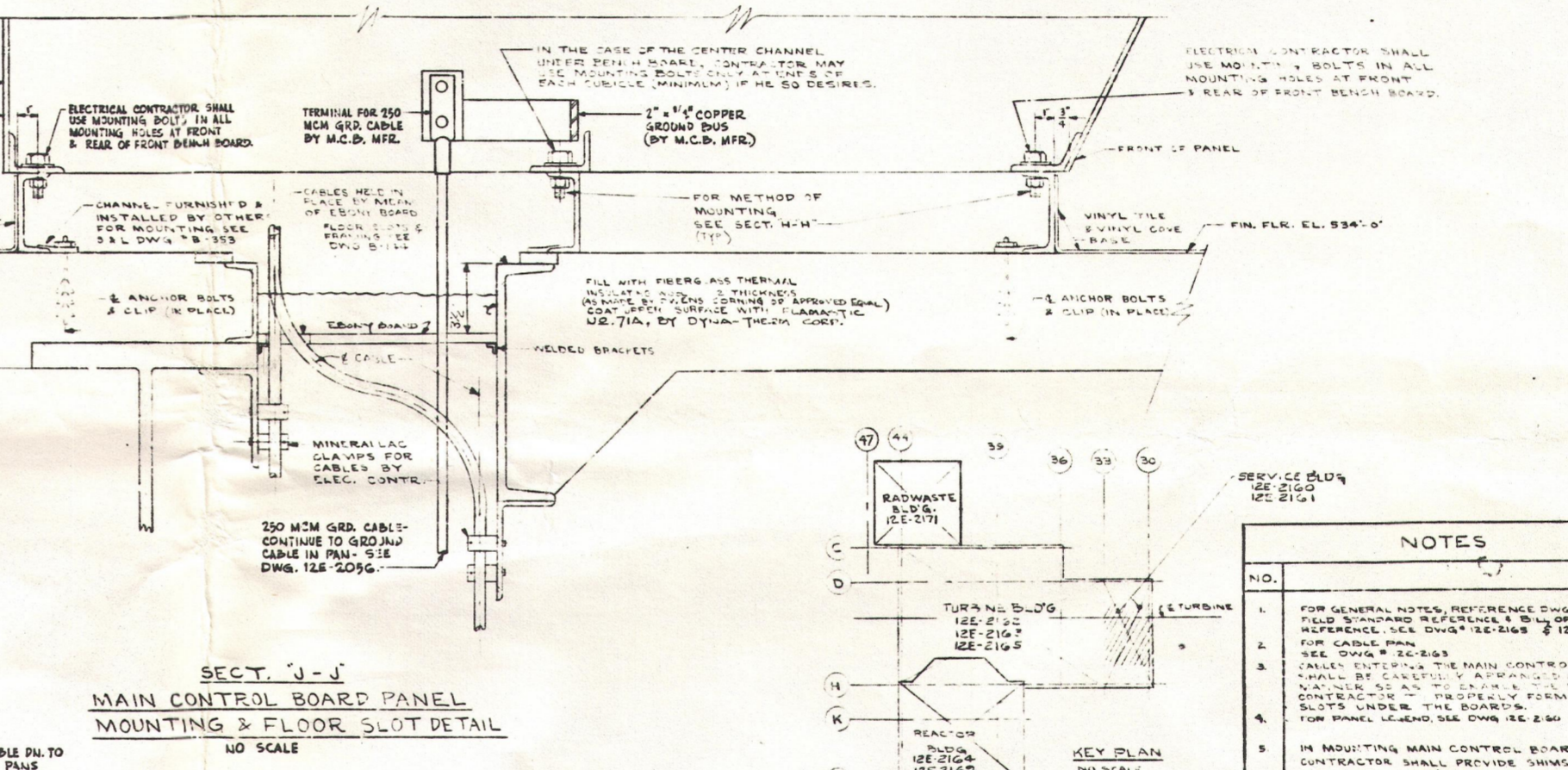


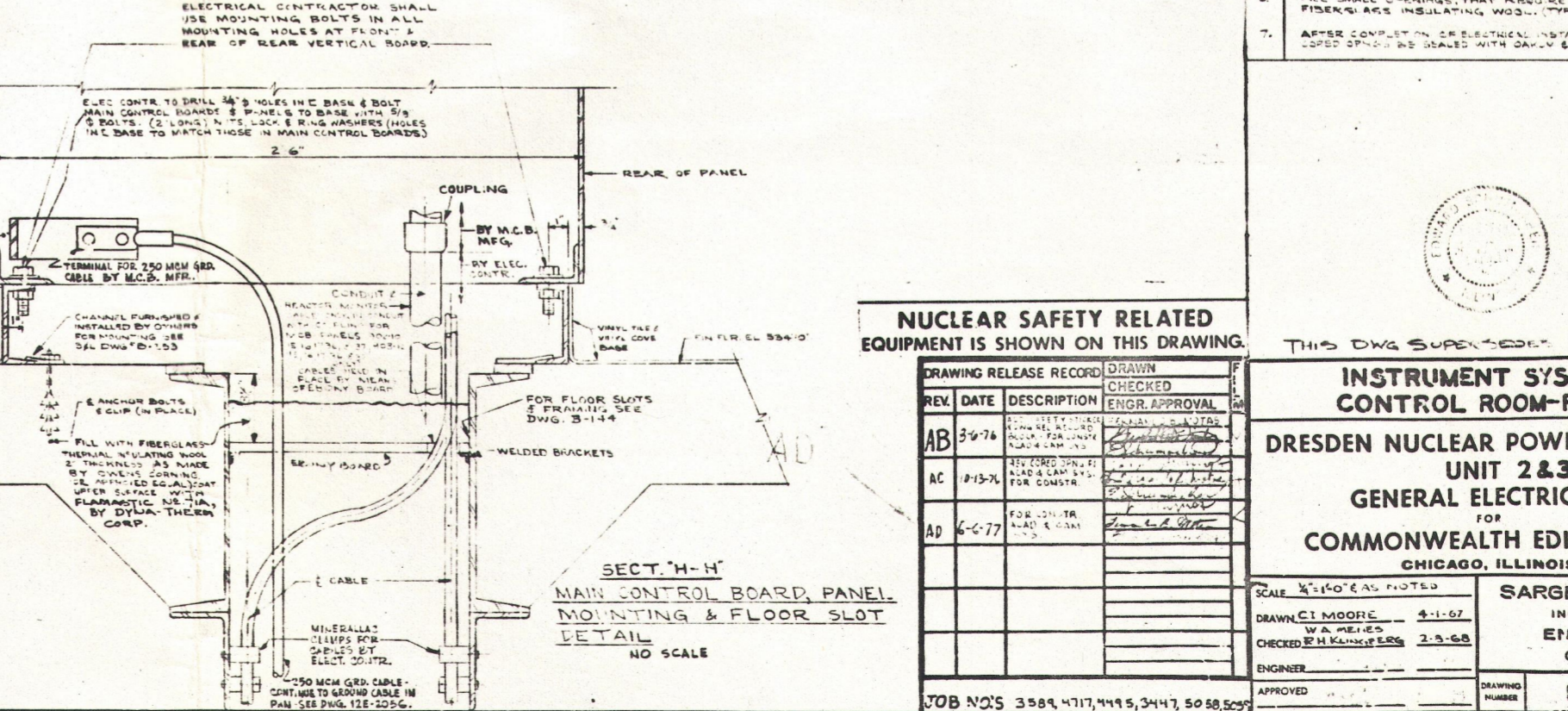
PLAN CONTROL ROOM EL 534'-0"



SECTION K-K MAIN CONTROL BOARD, PANEL MOUNTING & FLOOR SLOT DETAIL NO SCALE



SECTION J-J MAIN CONTROL BOARD, PANEL MOUNTING & FLOOR SLOT DETAIL NO SCALE



SECTION H-H MAIN CONTROL BOARD, PANEL MOUNTING & FLOOR SLOT DETAIL NO SCALE

NUCLEAR SAFETY RELATED EQUIPMENT IS SHOWN ON THIS DRAWING

REV	DATE	DESCRIPTION	DRWNG	CHECKED	ENGR. APPROVAL
AB	3-9-76				
AC	7-13-76				
AD	6-0-77				

- NOTES
- FOR GENERAL NOTES, REFERENCE DWGS. ELECTRICAL FIELD STANDARD REFERENCE LISTS OF MATERIAL REFERENCE, SEE DWGS. 12E-2162 & 12E-2163
 - FOR CABLE PAN, SEE DWG. 12E-2163
 - CABLES ENTERING THE MAIN CONTROL BOARD SHALL BE CAREFULLY ARRANGED TO BE NEATLY PACKED AS AS SHOWN ON ELECTRICAL CONTRACTOR'S PROPOSED FORM THE SEAL IN SLOTS UNDER THE BOARD. FOR PANEL LEADS SEE DWG. 12E-2164
 - IN MOUNTING MAIN CONTROL BOARD ELECTRICAL CONTRACTOR SHALL PROVIDE SHIMS ETC. (IF NECESSARY) SO FINAL INSTALLATION IS TRUE & LEVEL.
 - FILL SMALL CHANNELS THAT REQUIRE SEALING WITH FIBERS AND INSULATING WOOD PUTTY.
 - AFTER COMPLETION OF ELECTRICAL INSTALLATION, ALL OPENED SPACES BE SEALED WITH GASKET & GUM SEAL.



THIS DWG SUPERSEDES DWG. ES-23

INSTRUMENT SYSTEM CONTROL ROOM-PLAN

DRESDEN NUCLEAR POWER STATION UNIT 2&3

GENERAL ELECTRIC CO.

COMMONWEALTH EDISON CO.

CHICAGO, ILLINOIS

SCALE: 1/4" = 1'-0" (AS NOTED)

DRAWN: C. MOORE 2-11-76

CHECKED: E. H. MANNING 2-15-76

ENGINEER: SARGENT & LUNDY INCORPORATED ENGINEERS CHICAGO

APPROVED: [Signature]

DRAWING NUMBER: 12E-2161

Docket # 20-237/249/244/265
Control # 202/504
Date 4/14/78 of Document
REGULATORY DOCKET FILE

