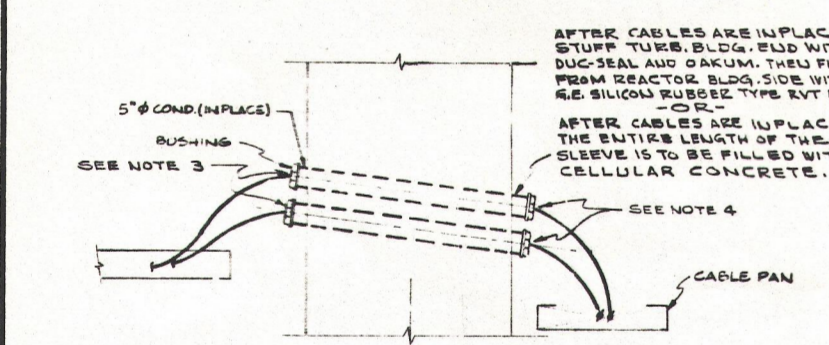
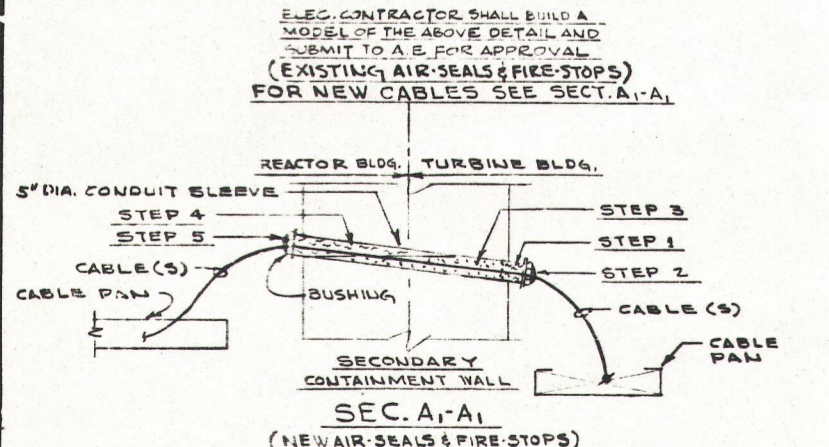


PLAN EL 545'-6" NORTH



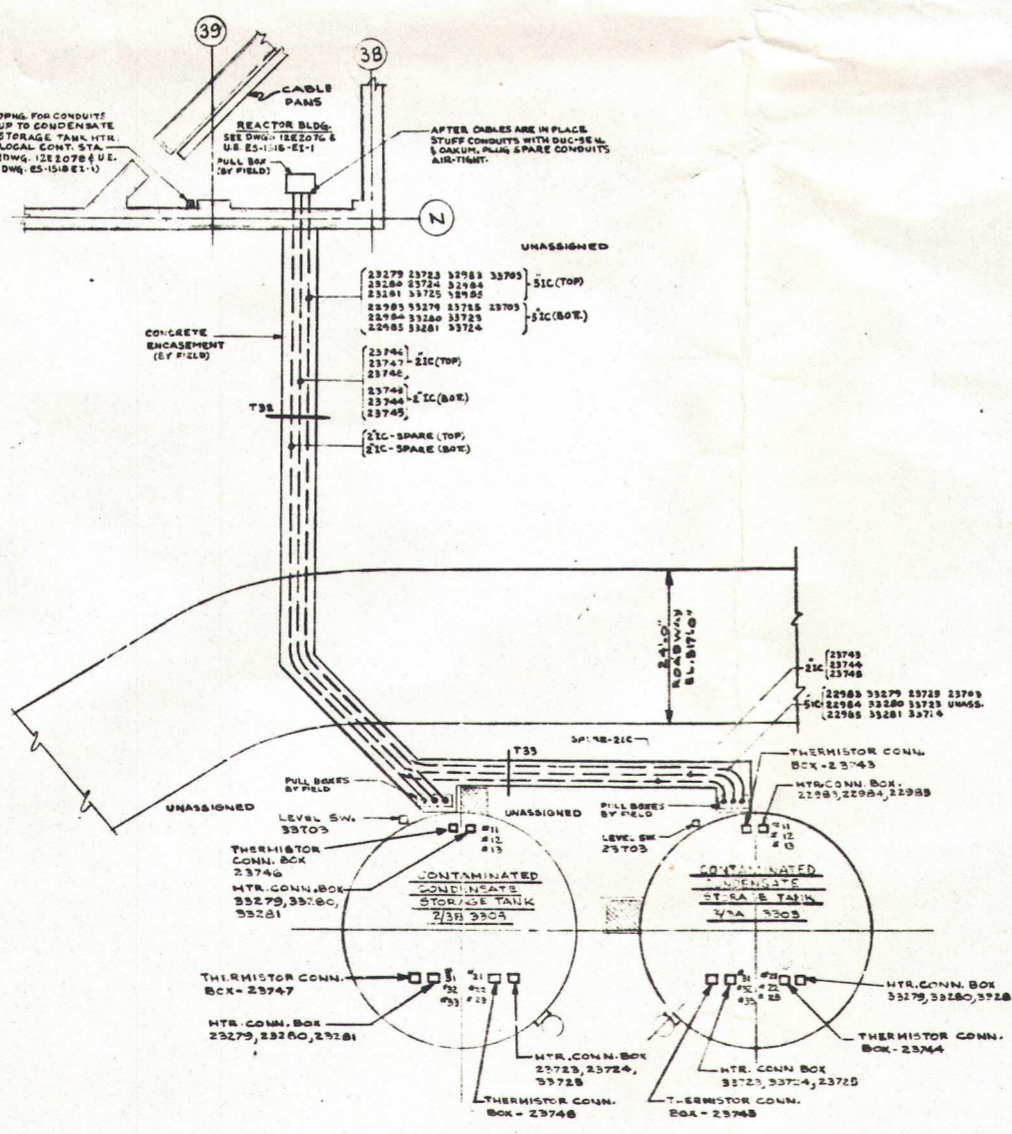
SEC-A-A



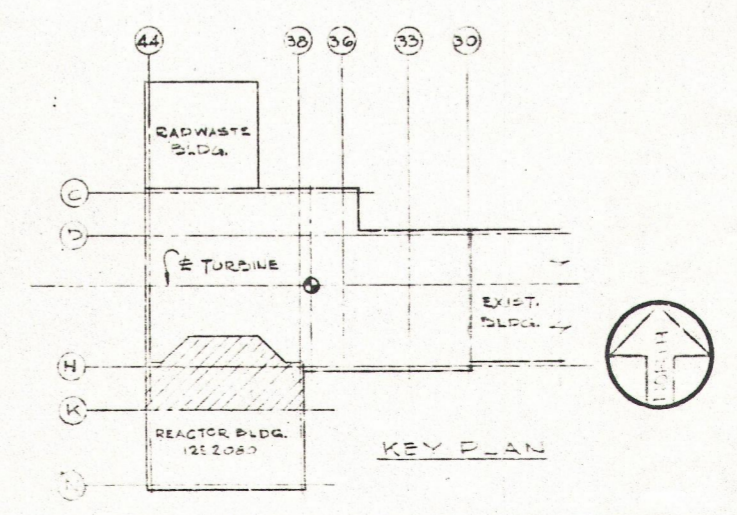
SEC-A1-A1

- AFTER CABLE(S) IS (ARE) IN PLACE:
- STEP 1 PACK WITH APPROX. 3" OF INORGANIC FIBER. (SEE NOTE A)
 - STEP 2 APPLY FLAME RETARDANT MASTIC. (SEE NOTE B)
 - STEP 3 FILL WITH SILICONE SEALANT. (SEE NOTE C)
 - STEP 4 PACK REMAINING VOID WITH INORGANIC FIBER. (SEE NOTE A)
 - STEP 5 APPLY FLAME RETARDANT MASTIC. (SEE NOTE B)

- NOTES:
- A. INORGANIC FIBER SHALL BE JOHNS-MANVILLE CERAFIBER OR BABCOCK & WILCOX KADWOOL BRAND OF CERAMIC FIBER.
 - B. FLAME RETARDANT MASTIC SHALL BE "FLAMEMASTIC-71A" BY THE FLAME MASTER CORP. SUN VALLEY, CALIF. AND SHALL BE APPLIED APPROX. 1/4" THICK.
 - C. SILICONE SEALANT SHALL BE GEIBERKAL ELECTRIC CO. RTV-G17; THIS SEALANT HAS TESTED EQUIVALENT TO U.L. 94V-0.



PARTIAL PLAN - CONDENSATE STORAGE TANKS



KEY PLAN

- | NO. | NOTES |
|-----|---|
| 1. | FOR GENERAL NOTES SEE DWG 12E-210 |
| 2. | FOR GROUNDING NOTES & DETAILS SEE DWG 12E-210.3 |
| 3. | EXISTING PENETRATIONS CONTAINING G.E. CO. SILICONE RUBBER TYPE RTV108 SHALL BE MODIFIED AS FOLLOWS:
A: APPLY FLAME RETARDANT MASTIC OVER THE EXPOSED RTV108 AND CABLE. CABLE SHALL BE COATED FOR A DISTANCE OF 8 FT. FROM THE PENETRATION, OR FOR THE DISTANCE BETWEEN THE PENETRATION AND THE CABLE TRAY IF THE DISTANCE IS LESS THAN 8 FEET. (SEE NOTE B.) |
| 4. | EXISTING PENETRATIONS CONTAINING DUCT SEAL AND/OR OAKUM SHALL BE MODIFIED AS FOLLOWS:
A: OAKUM SHALL BE REMOVED AND REPLACED WITH INORGANIC FIBER (SEE NOTE A)
B: DUCT SEAL SHALL BE REMOVED AND REPLACED WITH FLAME RETARDANT MASTIC. (SEE NOTE B.) |

Docket # 80-237/104/254/360
Control # 250704
Date 4/14/78 of Document
REGULATORY DOCKET FILE

FOR CONSTRUCTION
W.O. 107210A

ELEC. INSTALLATION REACTOR BLDG
EL. 545'-6" NORTH

DRESDEN NUCLEAR POWER STATION
UNIT 2
GENERAL ELECTRIC CO.
FOR
COMMONWEALTH EDISON CO.
CHICAGO, ILLINOIS

SARGENT & LUNDY
INCORPORATED
ENGINEERS
CHICAGO
SCALE: AS SHOWN
DRAWN BY: [Signature]
CHECKED BY: [Signature]
ENGINEER: [Signature]
APPROVED: [Signature]
JOB NO. 3447
DRAWING NUMBER: 12E 2079

NO.	REVISIONS
1	AS SHOWN
2	REVISION
3	REVISION
4	REVISION
5	REVISION
6	REVISION
7	REVISION
8	REVISION
9	REVISION
10	REVISION
11	REVISION
12	REVISION
13	REVISION
14	REVISION
15	REVISION
16	REVISION
17	REVISION
18	REVISION
19	REVISION
20	REVISION
21	REVISION
22	REVISION
23	REVISION
24	REVISION
25	REVISION
26	REVISION
27	REVISION
28	REVISION
29	REVISION
30	REVISION
31	REVISION
32	REVISION
33	REVISION
34	REVISION
35	REVISION
36	REVISION
37	REVISION
38	REVISION
39	REVISION
40	REVISION
41	REVISION
42	REVISION
43	REVISION
44	REVISION
45	REVISION
46	REVISION
47	REVISION
48	REVISION
49	REVISION
50	REVISION