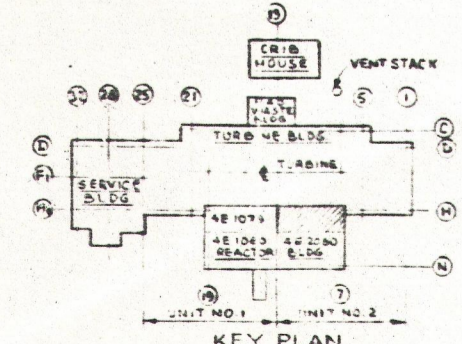
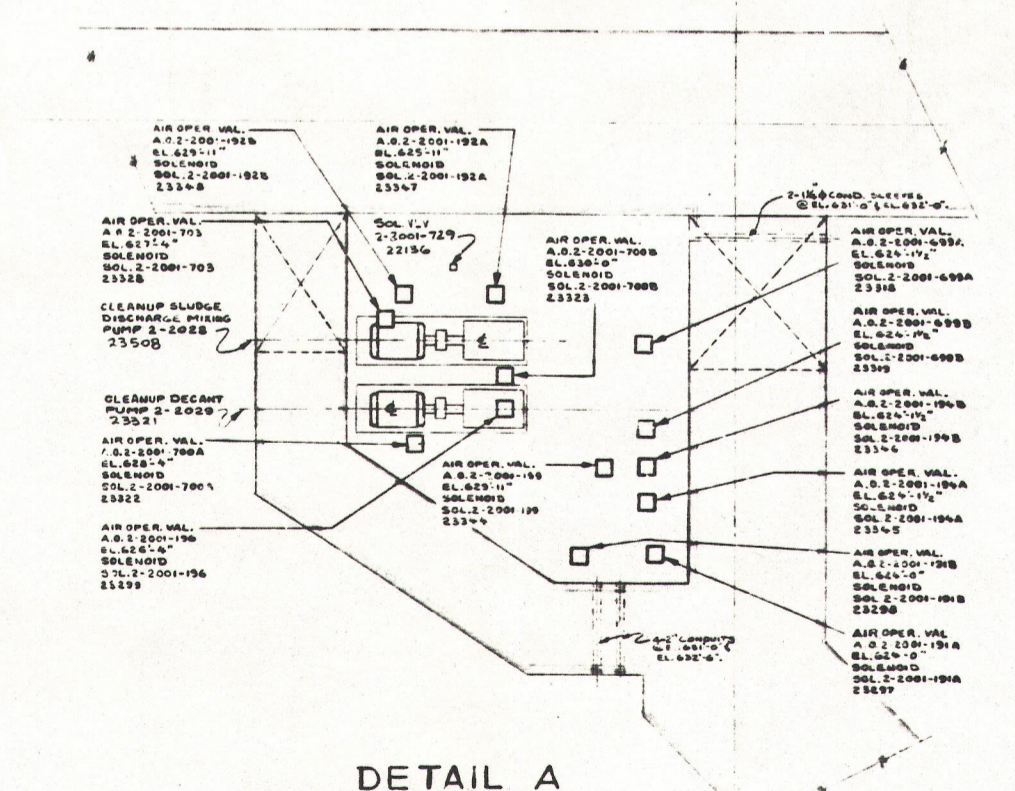


AUTO BLOWDOWN

ITEM NO.	DESCRIPTION	QTY	UNIT
10154	1/2" DIA. GALV. PIPE	35734	FT.
10276	1/2" DIA. GALV. PIPE	14659	FT.
10278	1/2" DIA. GALV. PIPE	14659	FT.
10280	1/2" DIA. GALV. PIPE	14659	FT.
10282	1/2" DIA. GALV. PIPE	14659	FT.
10284	1/2" DIA. GALV. PIPE	14659	FT.
10286	1/2" DIA. GALV. PIPE	14659	FT.
10288	1/2" DIA. GALV. PIPE	14659	FT.
10290	1/2" DIA. GALV. PIPE	14659	FT.
10292	1/2" DIA. GALV. PIPE	14659	FT.
10294	1/2" DIA. GALV. PIPE	14659	FT.
10296	1/2" DIA. GALV. PIPE	14659	FT.
10298	1/2" DIA. GALV. PIPE	14659	FT.
10300	1/2" DIA. GALV. PIPE	14659	FT.
10302	1/2" DIA. GALV. PIPE	14659	FT.
10304	1/2" DIA. GALV. PIPE	14659	FT.
10306	1/2" DIA. GALV. PIPE	14659	FT.
10308	1/2" DIA. GALV. PIPE	14659	FT.
10310	1/2" DIA. GALV. PIPE	14659	FT.
10312	1/2" DIA. GALV. PIPE	14659	FT.
10314	1/2" DIA. GALV. PIPE	14659	FT.
10316	1/2" DIA. GALV. PIPE	14659	FT.
10318	1/2" DIA. GALV. PIPE	14659	FT.
10320	1/2" DIA. GALV. PIPE	14659	FT.
10322	1/2" DIA. GALV. PIPE	14659	FT.
10324	1/2" DIA. GALV. PIPE	14659	FT.
10326	1/2" DIA. GALV. PIPE	14659	FT.
10328	1/2" DIA. GALV. PIPE	14659	FT.
10330	1/2" DIA. GALV. PIPE	14659	FT.
10332	1/2" DIA. GALV. PIPE	14659	FT.
10334	1/2" DIA. GALV. PIPE	14659	FT.
10336	1/2" DIA. GALV. PIPE	14659	FT.
10338	1/2" DIA. GALV. PIPE	14659	FT.
10340	1/2" DIA. GALV. PIPE	14659	FT.
10342	1/2" DIA. GALV. PIPE	14659	FT.
10344	1/2" DIA. GALV. PIPE	14659	FT.
10346	1/2" DIA. GALV. PIPE	14659	FT.
10348	1/2" DIA. GALV. PIPE	14659	FT.
10350	1/2" DIA. GALV. PIPE	14659	FT.
10352	1/2" DIA. GALV. PIPE	14659	FT.
10354	1/2" DIA. GALV. PIPE	14659	FT.
10356	1/2" DIA. GALV. PIPE	14659	FT.
10358	1/2" DIA. GALV. PIPE	14659	FT.
10360	1/2" DIA. GALV. PIPE	14659	FT.
10362	1/2" DIA. GALV. PIPE	14659	FT.
10364	1/2" DIA. GALV. PIPE	14659	FT.
10366	1/2" DIA. GALV. PIPE	14659	FT.
10368	1/2" DIA. GALV. PIPE	14659	FT.
10370	1/2" DIA. GALV. PIPE	14659	FT.
10372	1/2" DIA. GALV. PIPE	14659	FT.
10374	1/2" DIA. GALV. PIPE	14659	FT.
10376	1/2" DIA. GALV. PIPE	14659	FT.
10378	1/2" DIA. GALV. PIPE	14659	FT.
10380	1/2" DIA. GALV. PIPE	14659	FT.
10382	1/2" DIA. GALV. PIPE	14659	FT.
10384	1/2" DIA. GALV. PIPE	14659	FT.
10386	1/2" DIA. GALV. PIPE	14659	FT.
10388	1/2" DIA. GALV. PIPE	14659	FT.
10390	1/2" DIA. GALV. PIPE	14659	FT.
10392	1/2" DIA. GALV. PIPE	14659	FT.
10394	1/2" DIA. GALV. PIPE	14659	FT.
10396	1/2" DIA. GALV. PIPE	14659	FT.
10398	1/2" DIA. GALV. PIPE	14659	FT.
10400	1/2" DIA. GALV. PIPE	14659	FT.
10402	1/2" DIA. GALV. PIPE	14659	FT.
10404	1/2" DIA. GALV. PIPE	14659	FT.
10406	1/2" DIA. GALV. PIPE	14659	FT.
10408	1/2" DIA. GALV. PIPE	14659	FT.
10410	1/2" DIA. GALV. PIPE	14659	FT.
10412	1/2" DIA. GALV. PIPE	14659	FT.
10414	1/2" DIA. GALV. PIPE	14659	FT.
10416	1/2" DIA. GALV. PIPE	14659	FT.
10418	1/2" DIA. GALV. PIPE	14659	FT.
10420	1/2" DIA. GALV. PIPE	14659	FT.
10422	1/2" DIA. GALV. PIPE	14659	FT.
10424	1/2" DIA. GALV. PIPE	14659	FT.
10426	1/2" DIA. GALV. PIPE	14659	FT.
10428	1/2" DIA. GALV. PIPE	14659	FT.
10430	1/2" DIA. GALV. PIPE	14659	FT.
10432	1/2" DIA. GALV. PIPE	14659	FT.
10434	1/2" DIA. GALV. PIPE	14659	FT.
10436	1/2" DIA. GALV. PIPE	14659	FT.
10438	1/2" DIA. GALV. PIPE	14659	FT.
10440	1/2" DIA. GALV. PIPE	14659	FT.
10442	1/2" DIA. GALV. PIPE	14659	FT.
10444	1/2" DIA. GALV. PIPE	14659	FT.
10446	1/2" DIA. GALV. PIPE	14659	FT.
10448	1/2" DIA. GALV. PIPE	14659	FT.
10450	1/2" DIA. GALV. PIPE	14659	FT.
10452	1/2" DIA. GALV. PIPE	14659	FT.
10454	1/2" DIA. GALV. PIPE	14659	FT.
10456	1/2" DIA. GALV. PIPE	14659	FT.
10458	1/2" DIA. GALV. PIPE	14659	FT.
10460	1/2" DIA. GALV. PIPE	14659	FT.
10462	1/2" DIA. GALV. PIPE	14659	FT.
10464	1/2" DIA. GALV. PIPE	14659	FT.
10466	1/2" DIA. GALV. PIPE	14659	FT.
10468	1/2" DIA. GALV. PIPE	14659	FT.
10470	1/2" DIA. GALV. PIPE	14659	FT.
10472	1/2" DIA. GALV. PIPE	14659	FT.
10474	1/2" DIA. GALV. PIPE	14659	FT.
10476	1/2" DIA. GALV. PIPE	14659	FT.
10478	1/2" DIA. GALV. PIPE	14659	FT.
10480	1/2" DIA. GALV. PIPE	14659	FT.
10482	1/2" DIA. GALV. PIPE	14659	FT.
10484	1/2" DIA. GALV. PIPE	14659	FT.
10486	1/2" DIA. GALV. PIPE	14659	FT.
10488	1/2" DIA. GALV. PIPE	14659	FT.
10490	1/2" DIA. GALV. PIPE	14659	FT.
10492	1/2" DIA. GALV. PIPE	14659	FT.
10494	1/2" DIA. GALV. PIPE	14659	FT.
10496	1/2" DIA. GALV. PIPE	14659	FT.
10498	1/2" DIA. GALV. PIPE	14659	FT.
10500	1/2" DIA. GALV. PIPE	14659	FT.



NOTES

- FOR GENERAL NOTES SEE DWG. 4E-2079
- FOR ADDITIONAL NOTES & DETAILS SEE DWG. 4E-2080
- ALL CONDUITS THAT ARE CONTAINED IN THIS DRAWING SHALL BE INSTALLED BY THE CONTRACTOR AND SHALL BE APPROVED BY THE CHIEF ENGINEER. THIS DRAWING IS THE PROPERTY OF THE COMMONWEALTH EDISON CO. AND IS NOT TO BE REPRODUCED OR COPIED WITHOUT THE WRITTEN PERMISSION OF THE COMPANY.

ELECT. INSTALL. REACTOR BLDG. EL. 623'-0" WEST.

QUAD-CITIES STATION UNIT 2

GENERAL ELECTRIC CO.

FOR COMMONWEALTH EDISON CO. CHICAGO, ILLINOIS

SCALE: 1/8" = 1'-0"

CHECKED: C.P. GARDNER 6-17-69

ENGINEER: SARGENT & LUNDY INCORPORATED CHICAGO

DRAWING NUMBER: **4E2079**

Doc # 237/249/251
Control # 265/280/304
Date 1/14/70 of Documents
REGULATORY DOCKET FILE

30X S.L.

2812/10/49