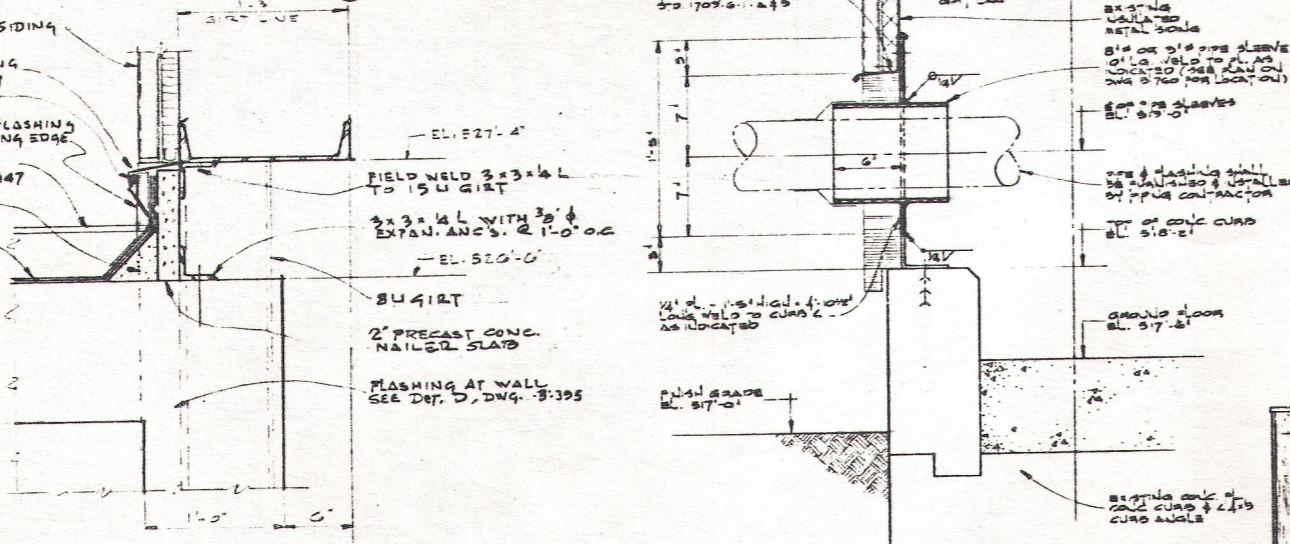


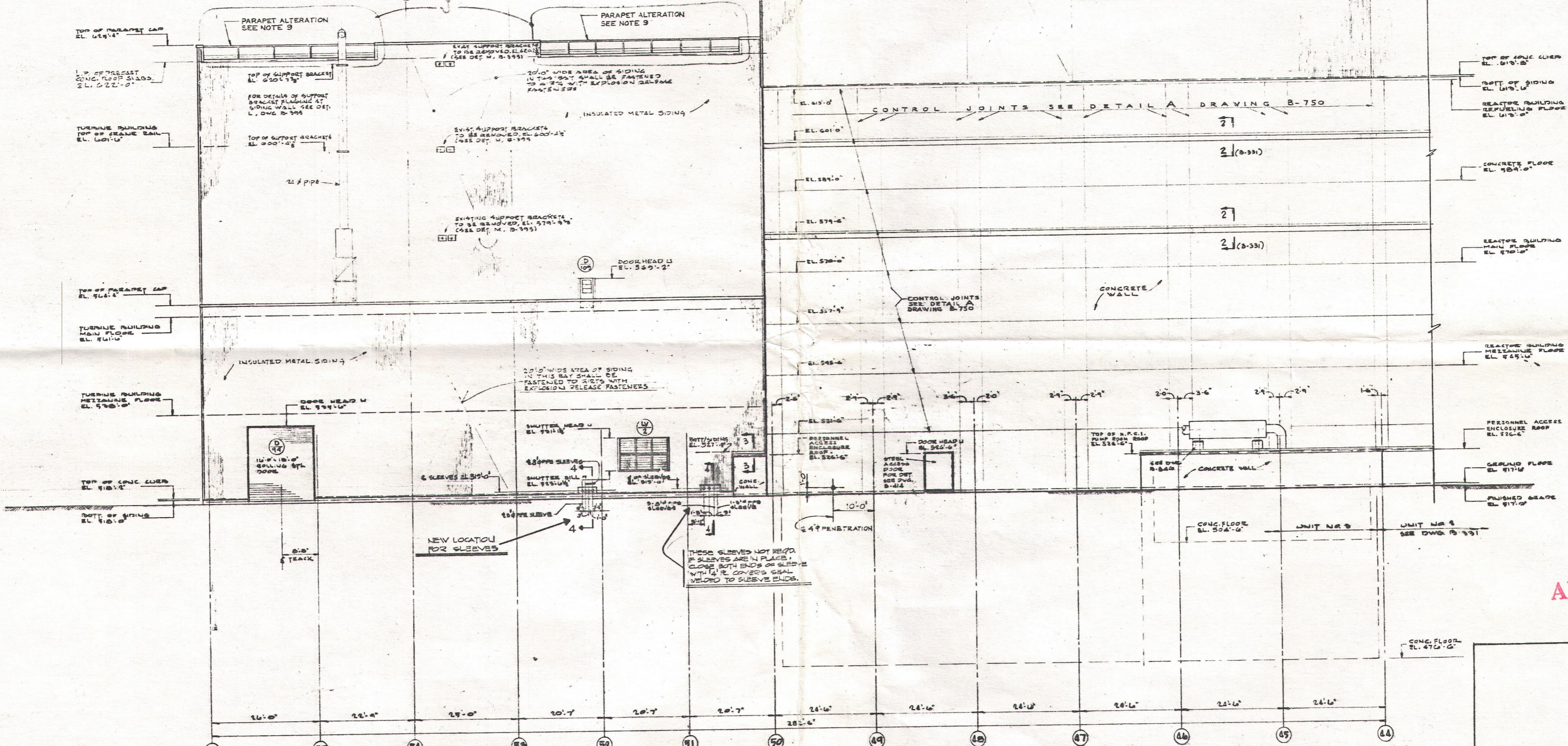
B-752

INSULATED METAL SIDING
TWO PG. FLASHING
PURN. W SIDING
CLOSE END
EXTEND D.P. FLASHING
UP TO COVER JOINTING EDGE
GRAVEL STOP SEE
SECT. 1-1 D.W.G. B-847
D.B.L.T. 1/2" CONC.
CANT 1/2" CONC.
BUILT-UP
ROOFING



SECTION 3-3
SCALE: 1/2" = 1'-0"

SECTION 4-4
SCALE: 1/2" = 1'-0"



SOUTH ELEVATION

NOTES table with 2 columns and 10 rows of specifications for construction materials and workmanship.

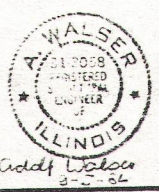
NOTES table with 2 columns and 4 rows of specifications for equipment and electrical details.

REFERENCE DRAWINGS table with 2 columns and 2 rows of drawing references.

REVISIONS table with 2 columns and 10 rows of revision history.

Project title block including: SOUTH ELEVATION, DRESDEN NUCLEAR POWER STATION UNIT 3, GENERAL ELECTRIC CO. FOR COMMONWEALTH EDISON CO., CHICAGO, ILLINOIS, SARGENT & LUNDY INCORPORATED ENGINEERS CHICAGO, and drawing number B-752.

SI APERTURE CARD



50-237
w/let dtd 8/30/89
#8909050464