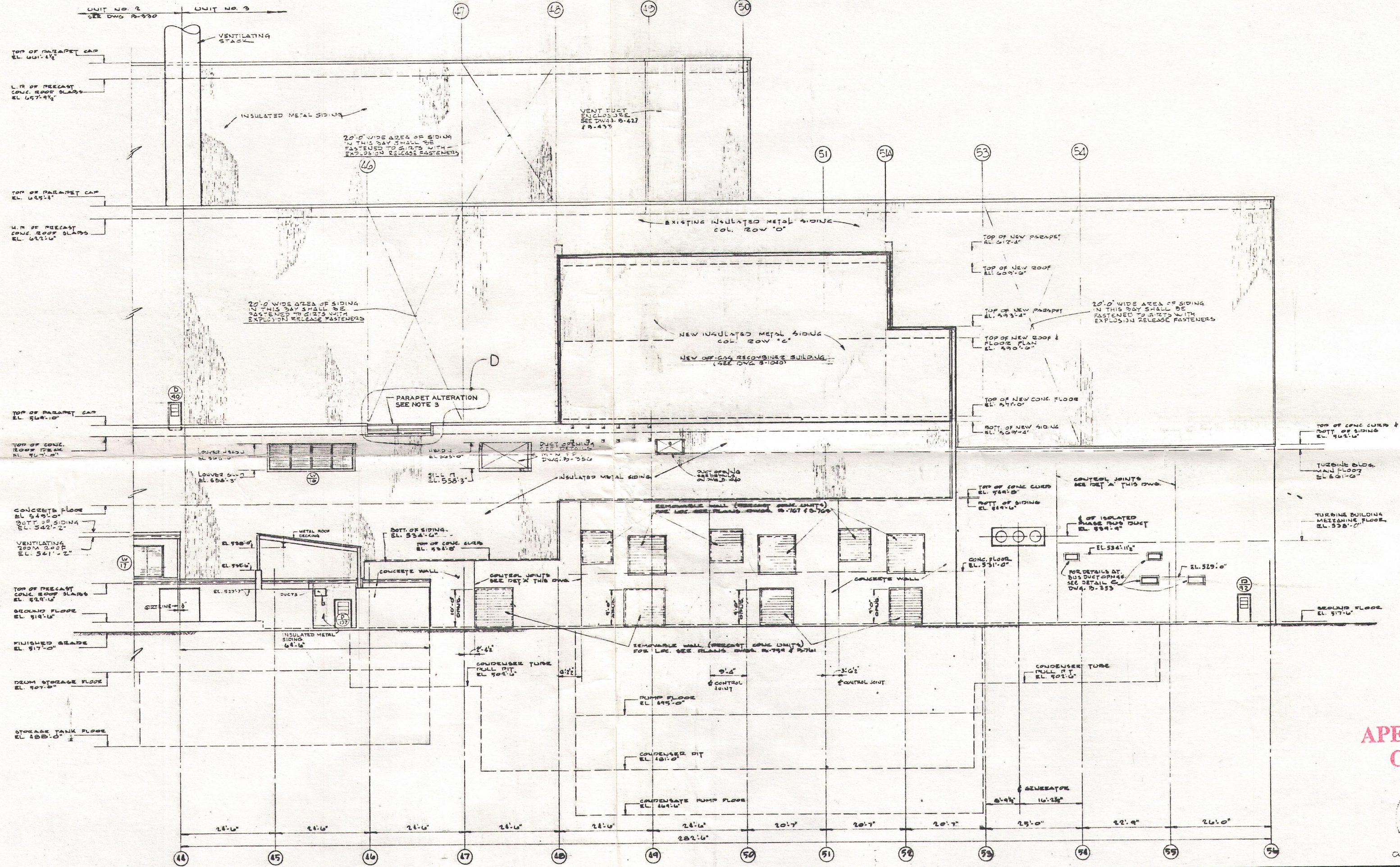


197 050 608 #
 6/2/87 M/ML 8/30/89
 50-23

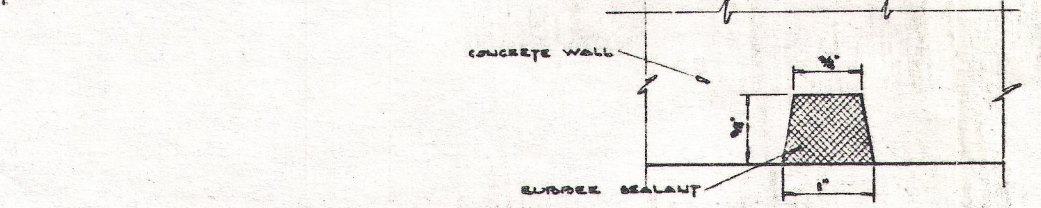
B-750

**SI
 APERTURE
 CARD**



NORTH ELEVATION

UNIT NO. 2
 SEE DWG. B-750



NOTES

- FOR ARCHITECTURAL NOTES SEE DWG. NO. B-1750.
- ALL WORK SHOWN ON THIS DRAWING SHALL BE IN ACCORDANCE WITH JOB SPECIFICATIONS K-1000.
- FOR PARAPET ALTERATION SEE DRAWING B-1751 (JOB NO. 6847-00, SPEC. K-4069).

REFERENCE DRAWINGS

B-1752 SOUTH ELEVATION
 B-335 WINDOW & DOOR SCHEDULES & DETAILS
 B-336 TURNING BUILDING SECTION PLAN AT EL. 510'-0" (NORTHEAST AREA)
 B-337 WALL SIDING & FLASHING DETAILS
 B-433 REACTOR BUILDING WALL SECTIONS

REVISIONS

NO.	DATE	DESCRIPTION
1	9-5-84	ISSUED FOR CONSTRUCTION
2	10-5-87	FOR CONSTRUCTION
3	10-5-87	FOR CONSTRUCTION
4	10-5-87	FOR CONSTRUCTION
5	10-5-87	FOR CONSTRUCTION
6	10-5-87	FOR CONSTRUCTION
7	10-5-87	FOR CONSTRUCTION
8	10-5-87	FOR CONSTRUCTION
9	10-5-87	FOR CONSTRUCTION
10	10-5-87	FOR CONSTRUCTION

NORTH ELEVATION

**DRESDEN NUCLEAR POWER STATION
 UNIT 3
 GENERAL ELECTRIC CO.
 FOR
 COMMONWEALTH EDISON CO.
 CHICAGO, ILLINOIS**

**SARGENT & LUNDY
 INCORPORATED
 ENGINEERS
 CHICAGO**

SCALE: 3/4" = 1'-0"
 DRAWN: M. B. LALIB 3-10-87
 CHECKED: J. M. LUNDY 10-5-87
 ENGINEER: J. M. LUNDY 10-5-87
 APPROVED: J. M. LUNDY 10-5-87

DRAWING RELEASE APPROVAL
 REV. SPEC. NO. DATE DESCRIPTION FOR CONSTRUCTION
 D K-4069 9-5-84 SPEC. K-4069 PROJECT NO. 6847
 DRAWN: J. M. LUNDY CHECKED: J. M. LUNDY ENG. APPR: J. M. LUNDY
 JOB NO. 54,654,6847-00

B-750