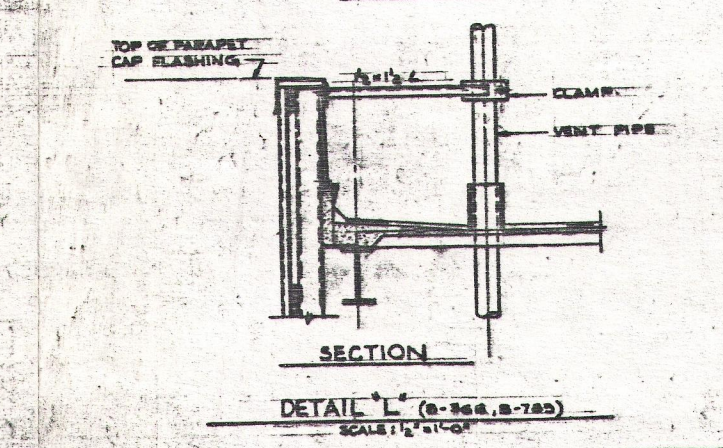
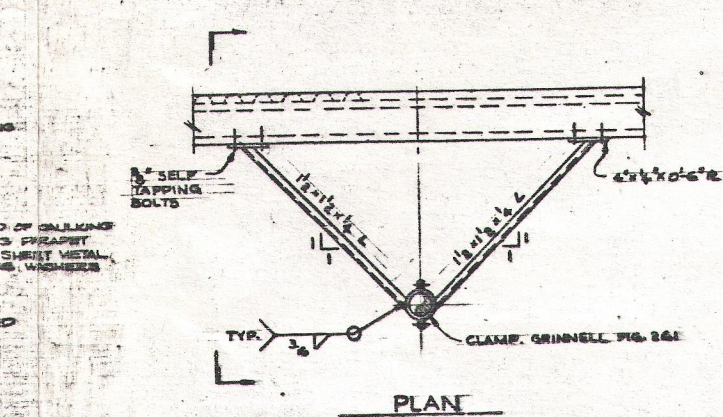
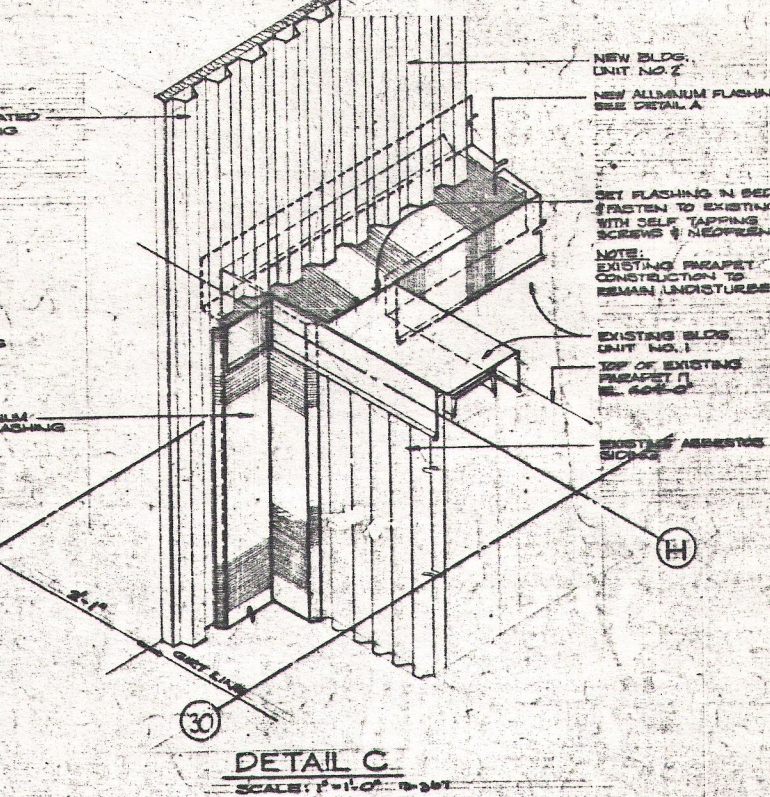
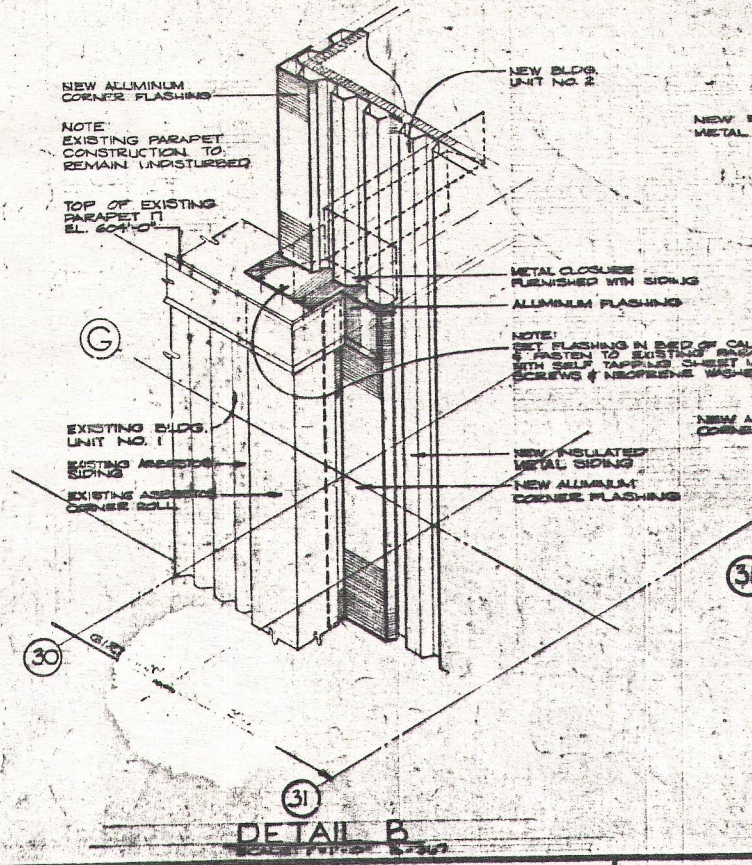
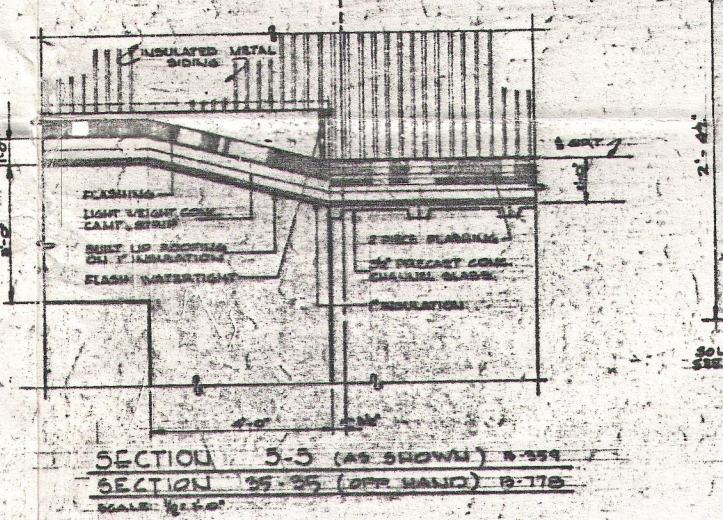
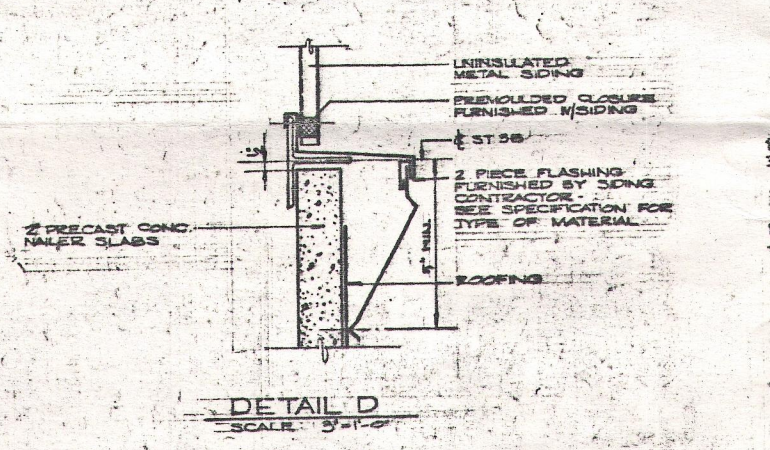
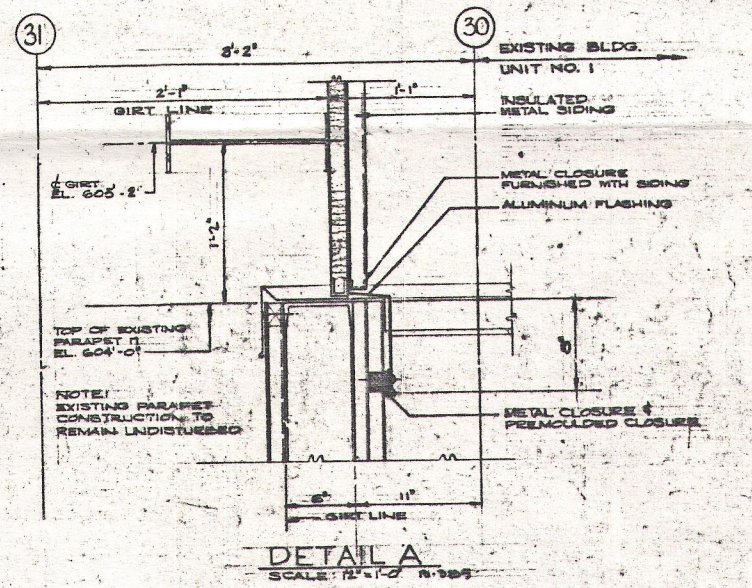
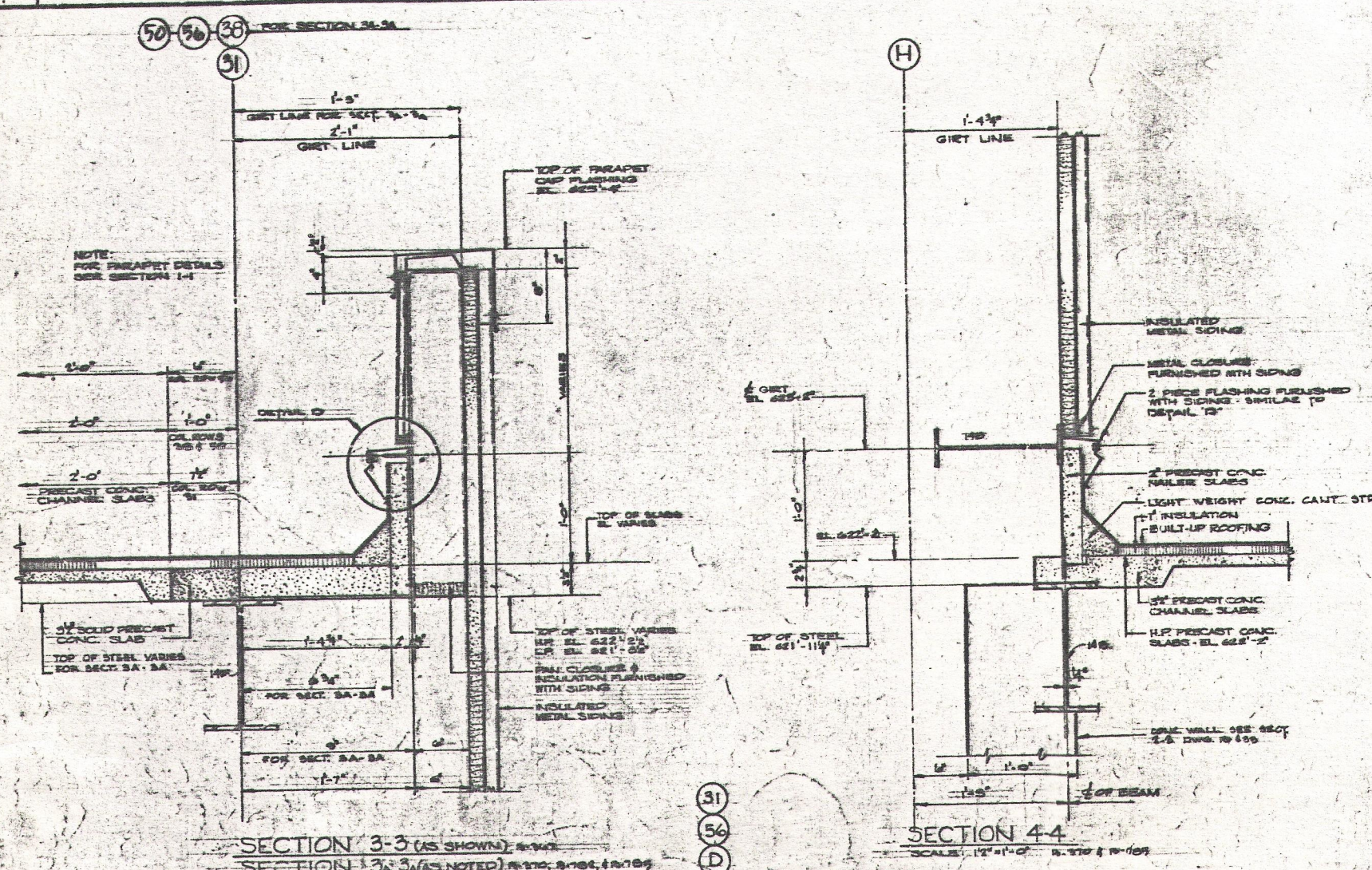
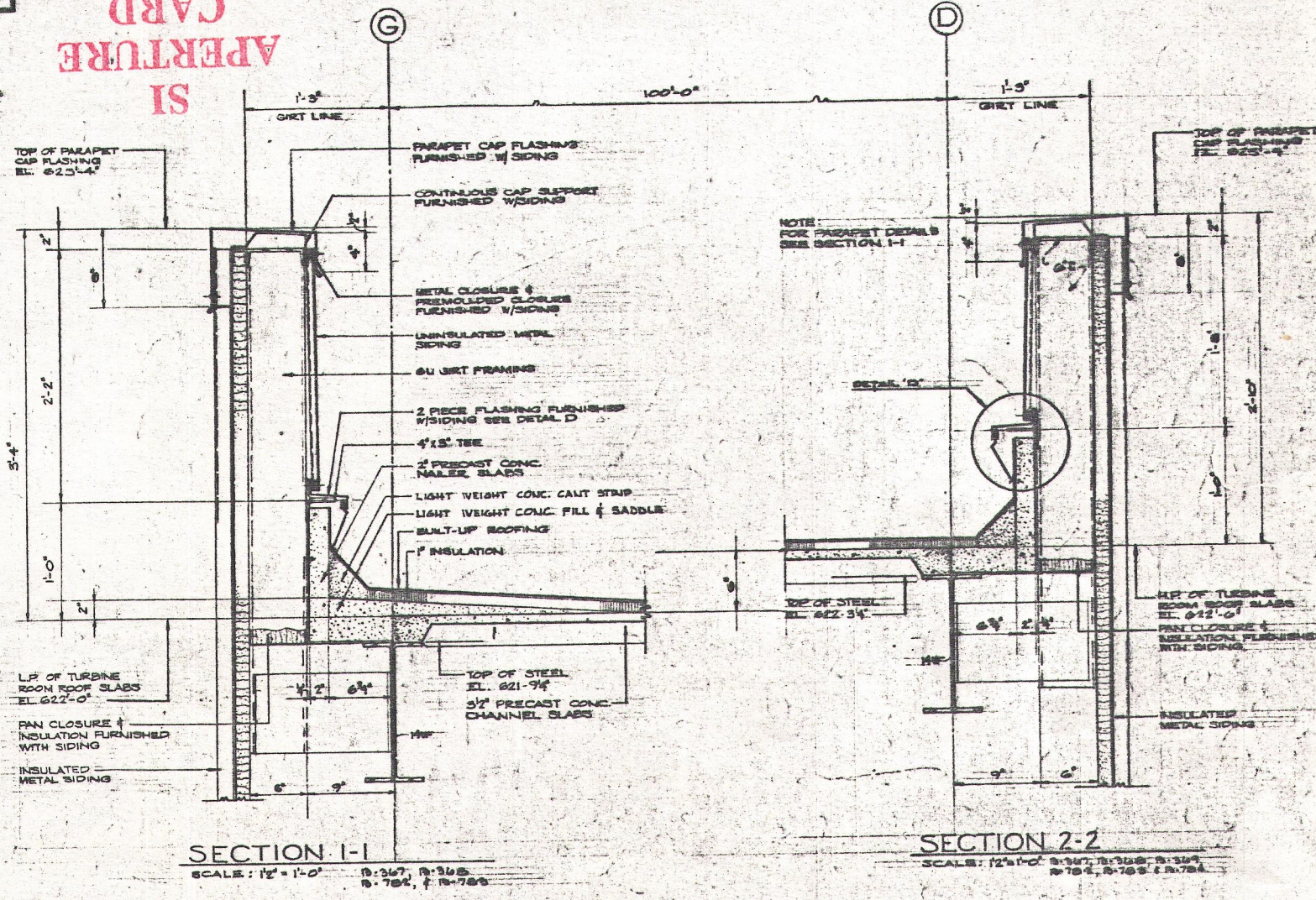


**SI APERTURE CARD**



**NOTES**

- FOR ARCHITECTURAL WORK, SEE DRAWING NO. B-1307
- ALL WORK SHOWN ON THIS DRAWING SHALL BE IN ACCORDANCE WITH THE SPECIFICATIONS.

**REFERENCE DRAWINGS**

B-1307	SI APERTURE CARD
B-1308	SI APERTURE CARD
B-1309	SI APERTURE CARD
B-784	SI APERTURE CARD
B-785	SI APERTURE CARD
B-786	SI APERTURE CARD

**SI APERTURE CARD**

**TURBINE BUILDING ROOF SECTIONS & DETAILS SHEET 1**  
DRESDEN NUCLEAR POWER STATION  
UNIT 2 & 3  
GENERAL ELECTRIC CO.  
FOR  
COMMONWEALTH EDISON CO.  
CHICAGO, ILLINOIS

**BARRETT & LUNDY**  
INCORPORATED  
ENGINEERS  
CHICAGO, ILLINOIS

**30X S.L.** 50-237  
w/let dtd 8/30/89  
#8909050 464