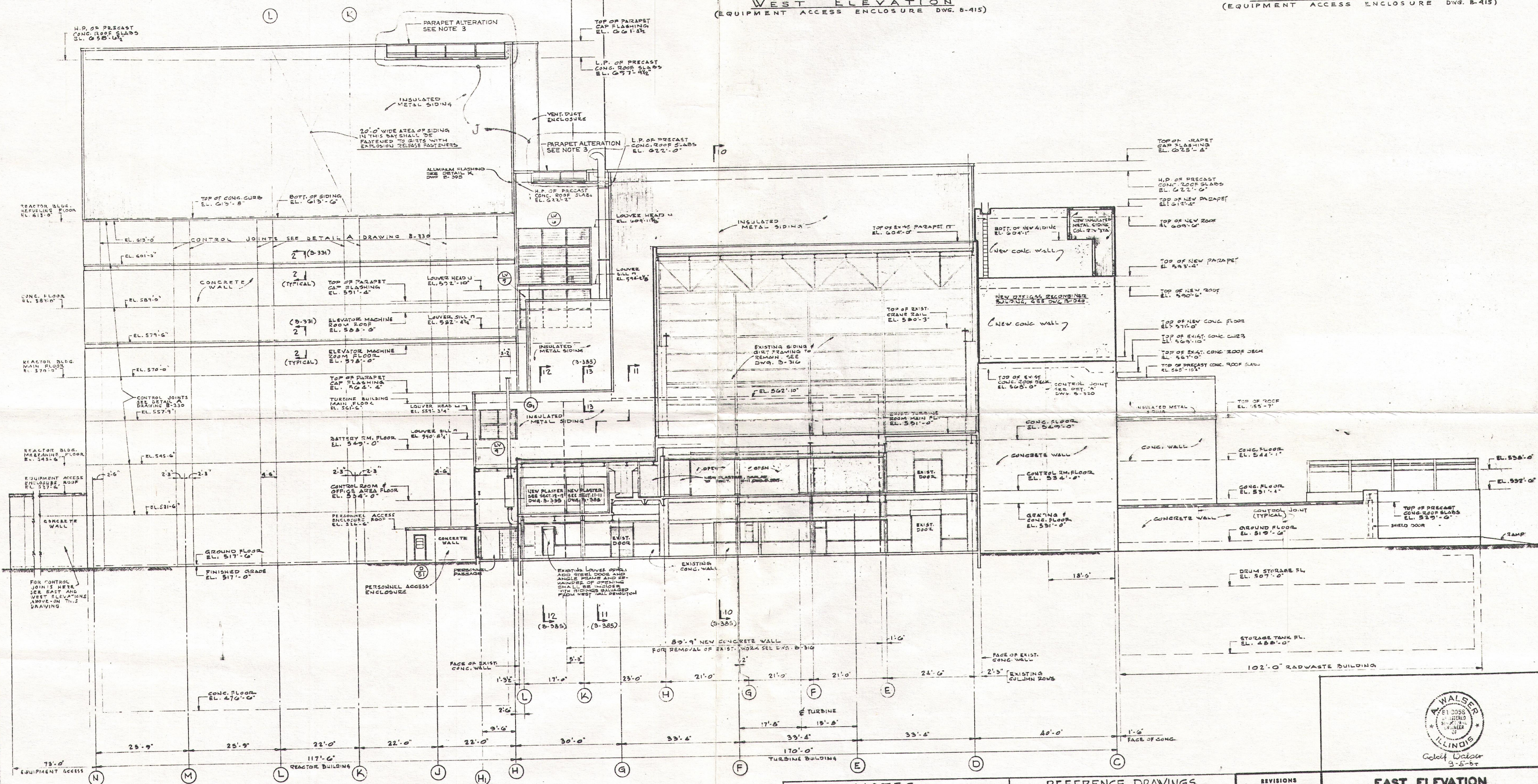


B-332

SI  
APERTURE  
CARD



WEST ELEVATION  
(EQUIPMENT ACCESS ENCLOSURE DWG. B-415)

EAST ELEVATION  
(EQUIPMENT ACCESS ENCLOSURE DWG. B-415)

EAST ELEVATION  
SCALE: 3/8" = 1'-0"

- NOTES**
1. FOR ARCHITECTURAL NOTES SEE DRAWING NO. B-331
  2. ALL WORK SHOWN ON THIS DRAWING SHALL BE IN ACCORDANCE WITH JOB SPECIFICATION K-720
  3. FOR PARAPET ALTERATION SEE DRAWING B-331 (SHEET 2567, SPEC. K-4069)

REFERENCE DRAWINGS  
B-331 SOUTH ELEVATION

SI  
APERTURE  
CARD

DRAWING RELEASE APPROVAL

REV.	SPEC. NO.	DATE	DESCRIPTION
J	K-4069	9-2-84	SPEC. NO. 4069 PROJECT NO. 6847
DRAWN:	CHKD:	ENG. APPR.	
W. J. ...	W. J. ...	C. G. ...	

**REVISIONS**

NO.	DATE	DESCRIPTION
1		
2		
3		
4		
5		
6		
7		
8		
9		
10		
11		
12		
13		
14		
15		
16		
17		
18		
19		
20		
21		
22		
23		
24		
25		
26		
27		
28		
29		
30		
31		
32		
33		
34		
35		
36		
37		
38		
39		
40		
41		
42		
43		
44		
45		
46		
47		
48		
49		
50		

**EAST ELEVATION**

DRESDEN NUCLEAR POWER STATION  
UNIT 2  
GENERAL ELECTRIC CO.  
FOR  
COMMONWEALTH EDISON CO.  
CHICAGO, ILLINOIS

SCALE: 3/8" = 1'-0"

DRAWN: W. J. ...  
CHKD: W. J. ...  
ENG. APPR.: C. G. ...

APPROVED: M. J. ...

DATE: 6-2-84

PROJECT NO.: 6847

JOB NO.: 5447, 287-80

**SARGENT & LUNDY**  
INCORPORATED  
ENGINEERS  
CHICAGO

**B-332**

50-237  
w/rev 144 8/30/89  
# 8909050464