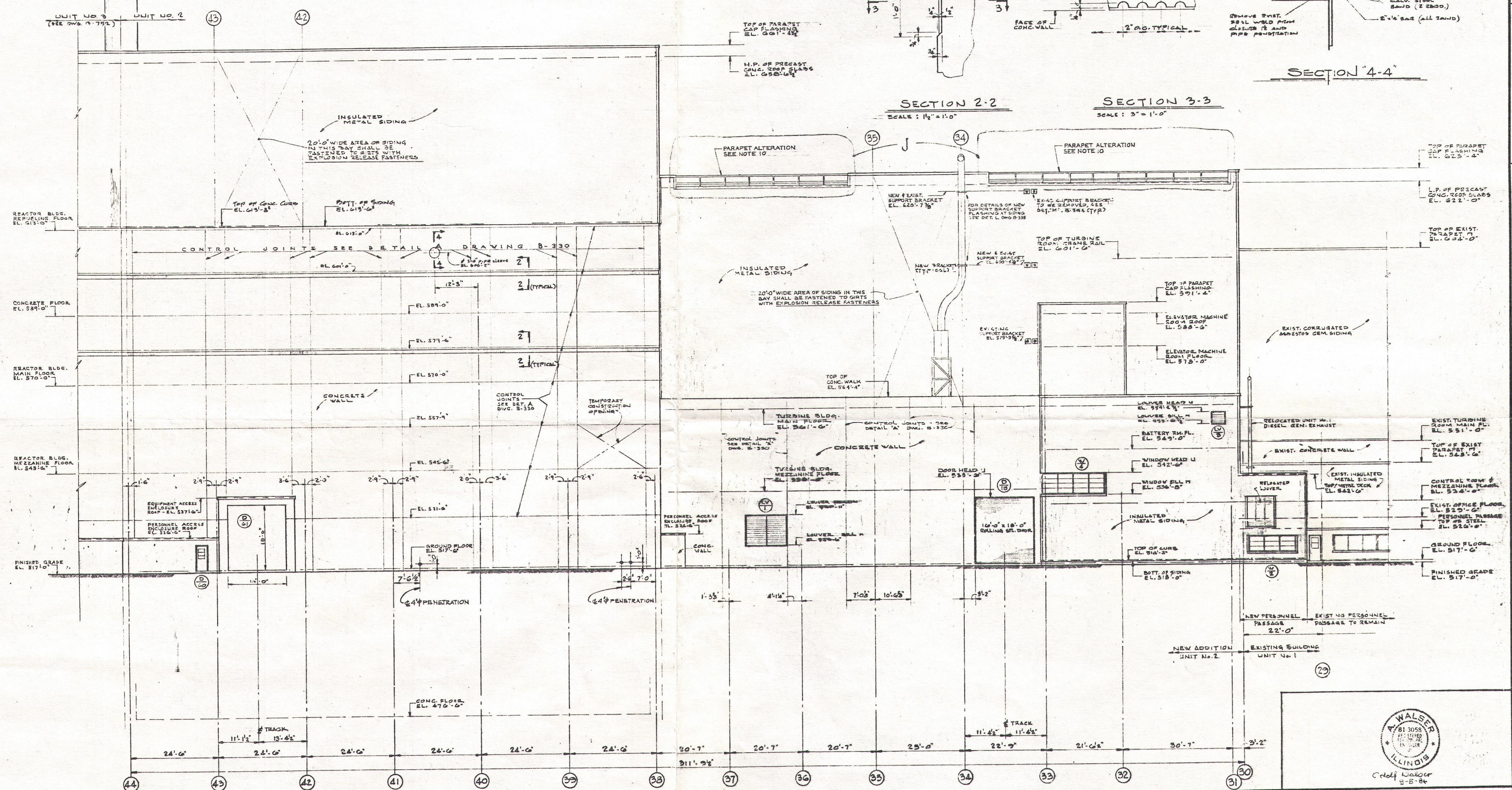


B-331

SI APERTURE CARD



SOUTH ELEVATION

SCALE: 3/8" = 1'-0"

NOTES

1. ALL WORK ON THIS DRAWING SHALL BE FURNISHED AND INSTALLED IN ACCORDANCE WITH THE JOB SPECIFICATIONS AND ALL OTHERS WITH THE JOB SPECIFICATIONS.
2. ALL INSULATED METAL SIDING, FLASHING, FRAMES, AND METAL CLASURES ATTACHED TO SIDING, FRAMES, INDICATED HERE SHALL BE FURNISHED AND INSTALLED BY THE SIDING CONTRACTOR, UNLESS OTHERWISE NOTED IN ADDENDUMS TO THE SPECIFICATIONS.
3. ALL SIDING FLASHING SHALL BE SPECIFICATION R-12. ALL FLASHING SHALL CONFORM WITH THE FOLLOWING COMMENT AND UNLESS OTHERWISE NOTED IN ADDENDUMS TO THE SPECIFICATIONS, UNLESS OTHERWISE INDICATED IN ADDENDUMS:
 - 1715-BND STANDARD SPEC. FOR WALL BY WOOD.
 - 1715-D STANDARD SPEC. FOR WALL BY CONCRETE.
 - 1715-G STANDARD SPEC. FOR CONCRETE WALL.
 - 1715-I STANDARD SPEC. FOR CONCRETE WALL.
 - 1715-J STANDARD SPEC. FOR CONCRETE WALL.
 - 1715-K STANDARD SPEC. FOR CONCRETE WALL.
 - 1715-L STANDARD SPEC. FOR CONCRETE WALL.
 - 1715-M STANDARD SPEC. FOR CONCRETE WALL.
 - 1715-N STANDARD SPEC. FOR CONCRETE WALL.
 - 1715-O STANDARD SPEC. FOR CONCRETE WALL.
 - 1715-P STANDARD SPEC. FOR CONCRETE WALL.
 - 1715-Q STANDARD SPEC. FOR CONCRETE WALL.
 - 1715-R STANDARD SPEC. FOR CONCRETE WALL.
 - 1715-S STANDARD SPEC. FOR CONCRETE WALL.
 - 1715-T STANDARD SPEC. FOR CONCRETE WALL.
 - 1715-U STANDARD SPEC. FOR CONCRETE WALL.
 - 1715-V STANDARD SPEC. FOR CONCRETE WALL.
 - 1715-W STANDARD SPEC. FOR CONCRETE WALL.
 - 1715-X STANDARD SPEC. FOR CONCRETE WALL.
 - 1715-Y STANDARD SPEC. FOR CONCRETE WALL.
 - 1715-Z STANDARD SPEC. FOR CONCRETE WALL.

NOTES

1. THE LOCATION AND DETAILS OF EQUIPMENT SHALL BE MECHANICAL DRAWING.
2. THE LOCATION AND DETAILS OF EQUIPMENT SHALL BE MECHANICAL DRAWING.
3. THE LOCATION AND DETAILS OF EQUIPMENT SHALL BE MECHANICAL DRAWING.
4. THE LOCATION AND DETAILS OF EQUIPMENT SHALL BE MECHANICAL DRAWING.
5. THE LOCATION AND DETAILS OF EQUIPMENT SHALL BE MECHANICAL DRAWING.
6. THE LOCATION AND DETAILS OF EQUIPMENT SHALL BE MECHANICAL DRAWING.
7. THE LOCATION AND DETAILS OF EQUIPMENT SHALL BE MECHANICAL DRAWING.
8. THE LOCATION AND DETAILS OF EQUIPMENT SHALL BE MECHANICAL DRAWING.
9. THE LOCATION AND DETAILS OF EQUIPMENT SHALL BE MECHANICAL DRAWING.
10. THE LOCATION AND DETAILS OF EQUIPMENT SHALL BE MECHANICAL DRAWING.
11. THE LOCATION AND DETAILS OF EQUIPMENT SHALL BE MECHANICAL DRAWING.
12. THE LOCATION AND DETAILS OF EQUIPMENT SHALL BE MECHANICAL DRAWING.
13. THE LOCATION AND DETAILS OF EQUIPMENT SHALL BE MECHANICAL DRAWING.
14. THE LOCATION AND DETAILS OF EQUIPMENT SHALL BE MECHANICAL DRAWING.
15. THE LOCATION AND DETAILS OF EQUIPMENT SHALL BE MECHANICAL DRAWING.
16. THE LOCATION AND DETAILS OF EQUIPMENT SHALL BE MECHANICAL DRAWING.
17. THE LOCATION AND DETAILS OF EQUIPMENT SHALL BE MECHANICAL DRAWING.
18. THE LOCATION AND DETAILS OF EQUIPMENT SHALL BE MECHANICAL DRAWING.
19. THE LOCATION AND DETAILS OF EQUIPMENT SHALL BE MECHANICAL DRAWING.
20. THE LOCATION AND DETAILS OF EQUIPMENT SHALL BE MECHANICAL DRAWING.
21. THE LOCATION AND DETAILS OF EQUIPMENT SHALL BE MECHANICAL DRAWING.
22. THE LOCATION AND DETAILS OF EQUIPMENT SHALL BE MECHANICAL DRAWING.
23. THE LOCATION AND DETAILS OF EQUIPMENT SHALL BE MECHANICAL DRAWING.
24. THE LOCATION AND DETAILS OF EQUIPMENT SHALL BE MECHANICAL DRAWING.
25. THE LOCATION AND DETAILS OF EQUIPMENT SHALL BE MECHANICAL DRAWING.
26. THE LOCATION AND DETAILS OF EQUIPMENT SHALL BE MECHANICAL DRAWING.
27. THE LOCATION AND DETAILS OF EQUIPMENT SHALL BE MECHANICAL DRAWING.
28. THE LOCATION AND DETAILS OF EQUIPMENT SHALL BE MECHANICAL DRAWING.
29. THE LOCATION AND DETAILS OF EQUIPMENT SHALL BE MECHANICAL DRAWING.
30. THE LOCATION AND DETAILS OF EQUIPMENT SHALL BE MECHANICAL DRAWING.
31. THE LOCATION AND DETAILS OF EQUIPMENT SHALL BE MECHANICAL DRAWING.
32. THE LOCATION AND DETAILS OF EQUIPMENT SHALL BE MECHANICAL DRAWING.
33. THE LOCATION AND DETAILS OF EQUIPMENT SHALL BE MECHANICAL DRAWING.
34. THE LOCATION AND DETAILS OF EQUIPMENT SHALL BE MECHANICAL DRAWING.
35. THE LOCATION AND DETAILS OF EQUIPMENT SHALL BE MECHANICAL DRAWING.
36. THE LOCATION AND DETAILS OF EQUIPMENT SHALL BE MECHANICAL DRAWING.
37. THE LOCATION AND DETAILS OF EQUIPMENT SHALL BE MECHANICAL DRAWING.
38. THE LOCATION AND DETAILS OF EQUIPMENT SHALL BE MECHANICAL DRAWING.
39. THE LOCATION AND DETAILS OF EQUIPMENT SHALL BE MECHANICAL DRAWING.
40. THE LOCATION AND DETAILS OF EQUIPMENT SHALL BE MECHANICAL DRAWING.
41. THE LOCATION AND DETAILS OF EQUIPMENT SHALL BE MECHANICAL DRAWING.
42. THE LOCATION AND DETAILS OF EQUIPMENT SHALL BE MECHANICAL DRAWING.
43. THE LOCATION AND DETAILS OF EQUIPMENT SHALL BE MECHANICAL DRAWING.
44. THE LOCATION AND DETAILS OF EQUIPMENT SHALL BE MECHANICAL DRAWING.

REFERENCE DRAWINGS

SI APERTURE CARD

DRAWING RELEASE APPROVAL

REV	SPECING DATE	DESCRIPTION
J	4-10-63	FOR CONSTRUCTION
K	9-5-64	FOR CONSTRUCTION
L	2-2-65	FOR CONSTRUCTION
M	2-2-65	FOR CONSTRUCTION
N	2-2-65	FOR CONSTRUCTION
O	2-2-65	FOR CONSTRUCTION
P	2-2-65	FOR CONSTRUCTION
Q	2-2-65	FOR CONSTRUCTION
R	2-2-65	FOR CONSTRUCTION
S	2-2-65	FOR CONSTRUCTION
T	2-2-65	FOR CONSTRUCTION
U	2-2-65	FOR CONSTRUCTION
V	2-2-65	FOR CONSTRUCTION
W	2-2-65	FOR CONSTRUCTION
X	2-2-65	FOR CONSTRUCTION
Y	2-2-65	FOR CONSTRUCTION
Z	2-2-65	FOR CONSTRUCTION

REVISIONS

NO.	DATE	DESCRIPTION
1	4-10-63	FOR CONSTRUCTION
2	9-5-64	FOR CONSTRUCTION
3	2-2-65	FOR CONSTRUCTION
4	2-2-65	FOR CONSTRUCTION
5	2-2-65	FOR CONSTRUCTION
6	2-2-65	FOR CONSTRUCTION
7	2-2-65	FOR CONSTRUCTION
8	2-2-65	FOR CONSTRUCTION
9	2-2-65	FOR CONSTRUCTION
10	2-2-65	FOR CONSTRUCTION
11	2-2-65	FOR CONSTRUCTION
12	2-2-65	FOR CONSTRUCTION
13	2-2-65	FOR CONSTRUCTION
14	2-2-65	FOR CONSTRUCTION
15	2-2-65	FOR CONSTRUCTION
16	2-2-65	FOR CONSTRUCTION
17	2-2-65	FOR CONSTRUCTION
18	2-2-65	FOR CONSTRUCTION
19	2-2-65	FOR CONSTRUCTION
20	2-2-65	FOR CONSTRUCTION
21	2-2-65	FOR CONSTRUCTION
22	2-2-65	FOR CONSTRUCTION
23	2-2-65	FOR CONSTRUCTION
24	2-2-65	FOR CONSTRUCTION
25	2-2-65	FOR CONSTRUCTION
26	2-2-65	FOR CONSTRUCTION
27	2-2-65	FOR CONSTRUCTION
28	2-2-65	FOR CONSTRUCTION
29	2-2-65	FOR CONSTRUCTION
30	2-2-65	FOR CONSTRUCTION
31	2-2-65	FOR CONSTRUCTION
32	2-2-65	FOR CONSTRUCTION
33	2-2-65	FOR CONSTRUCTION
34	2-2-65	FOR CONSTRUCTION
35	2-2-65	FOR CONSTRUCTION
36	2-2-65	FOR CONSTRUCTION
37	2-2-65	FOR CONSTRUCTION
38	2-2-65	FOR CONSTRUCTION
39	2-2-65	FOR CONSTRUCTION
40	2-2-65	FOR CONSTRUCTION
41	2-2-65	FOR CONSTRUCTION
42	2-2-65	FOR CONSTRUCTION
43	2-2-65	FOR CONSTRUCTION
44	2-2-65	FOR CONSTRUCTION

SOUTH ELEVATION

DRESDEN NUCLEAR POWER STATION UNIT 2

GENERAL ELECTRIC CO.

FOR COMMONWEALTH EDISON CO.

CHICAGO, ILLINOIS

SARGENT & LUNDY INCORPORATED ENGINEERS CHICAGO

B-331

50-237
 W/let dtd 8/30/69
 #8909 050464