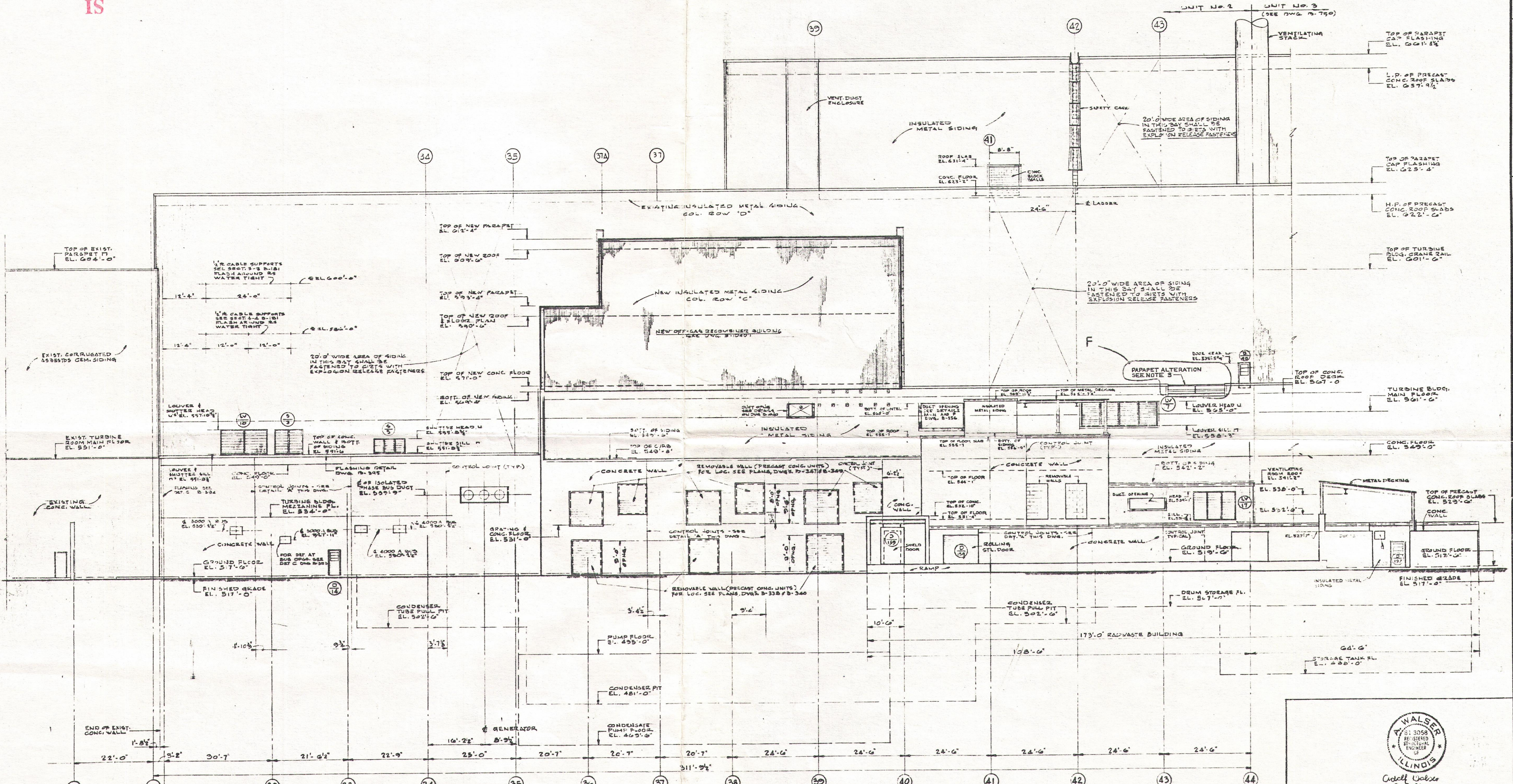


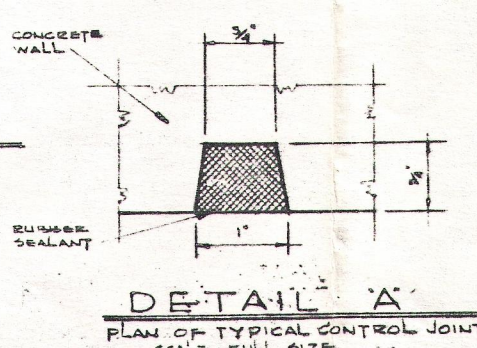
B-330

SI
APERTURE
CARD



EXISTING BUILDING UNIT No. 1 NEW ADDITION UNIT No. 2

NORTH ELEVATION
SCALE 3/8" = 1'-0"



NOTES

1. REFER ARCH. ACTUAL NOTES ON DRAWING B-330.
2. ALL WORK SHOWN ON THIS DRAWING SHALL BE IN ACCORDANCE WITH THE SPECIFICATIONS - 1-2000.
3. FOR PARAPET ALTERATION SEE DRAWING B-718 (JOB NO. 64700) SPEC. K-1009.

REFERENCE DRAWINGS

B-331 SOUTH ELEVATION

SI APERTURE CARD

REV.	DATE	DESCRIPTION
1	9-5-84	FOR CONSTRUCTION
2	9-5-84	FOR PARAPET ALTERATION

WALSHEP ILLINOIS
Cedell Walcott 9-5-84

NORTH ELEVATION

**DRESDEN NUCLEAR POWER STATION
UNIT 2
GENERAL ELECTRIC CO.
FOR
COMMONWEALTH EDISON CO.
CHICAGO, ILLINOIS**

**SARGENT & LUNDY
INCORPORATED
ENGINEERS
CHICAGO**

SCALE 3/8" = 1'-0"
DRAWN BY: [Name]
CHECKED BY: [Name]
DATE: 9/5/84
JOB NO. 3447, 647-20

B-330

50-237
w/ltt dtd. 8/30/89
#8909050464