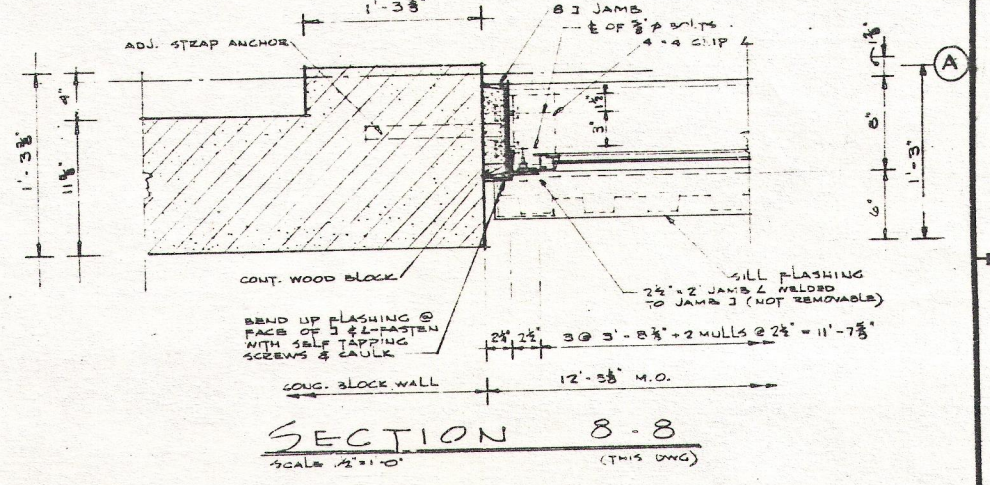
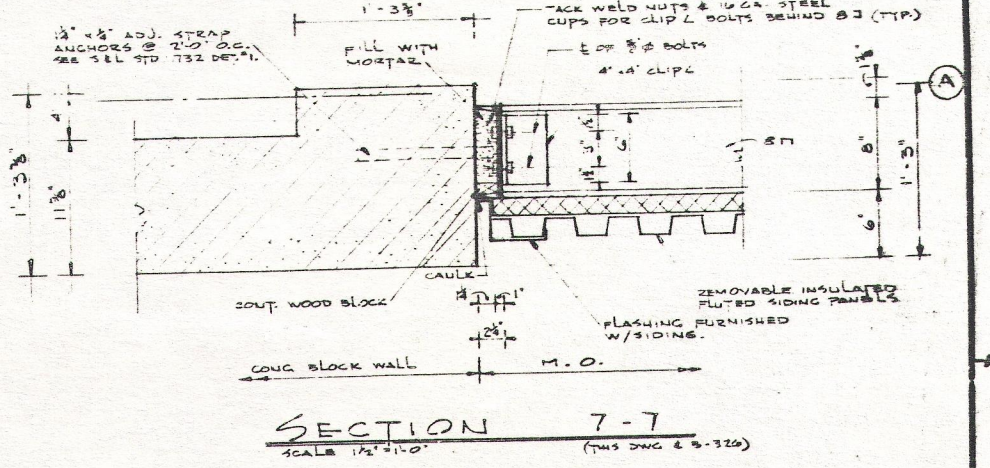
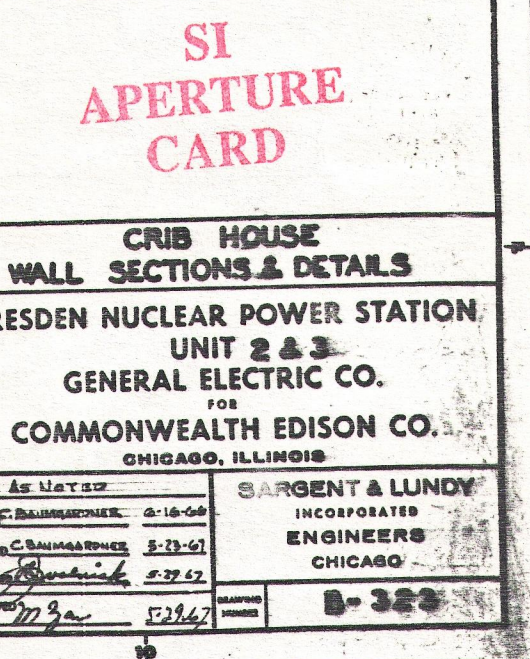
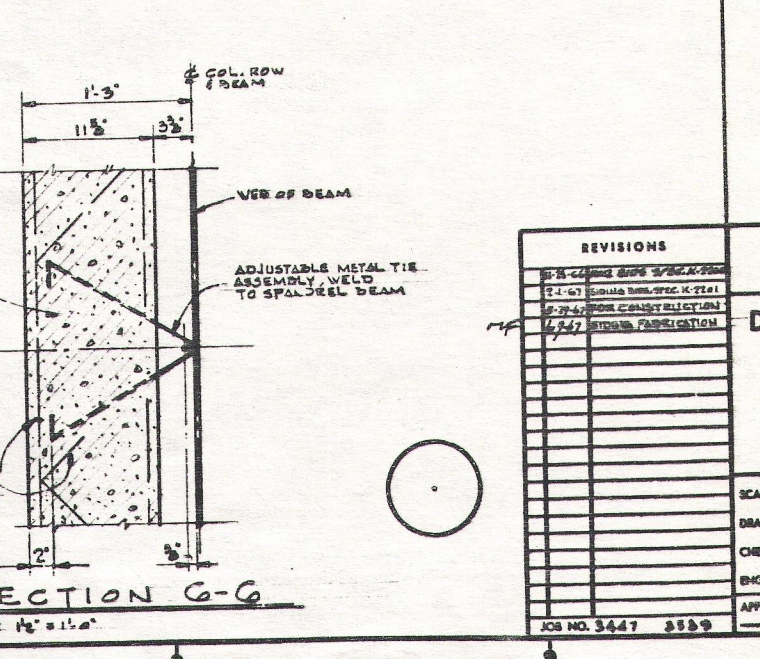
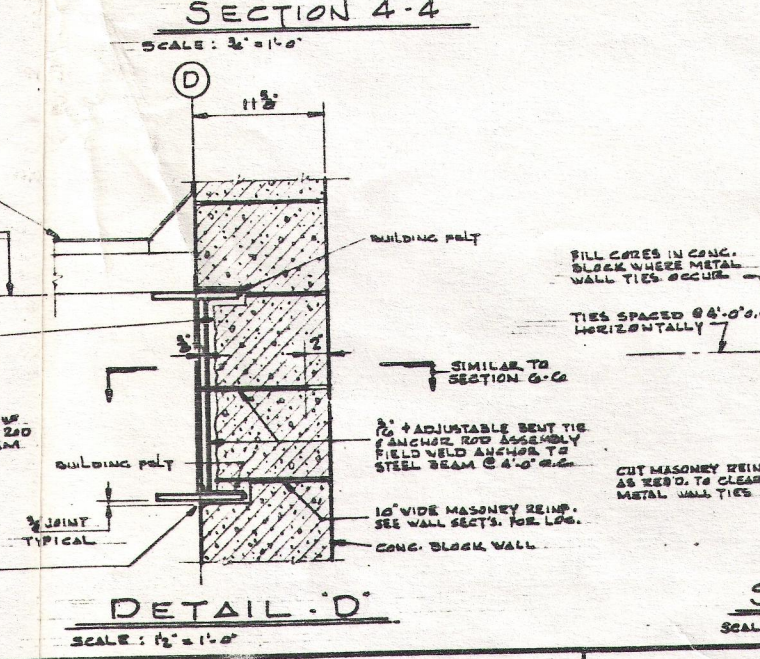
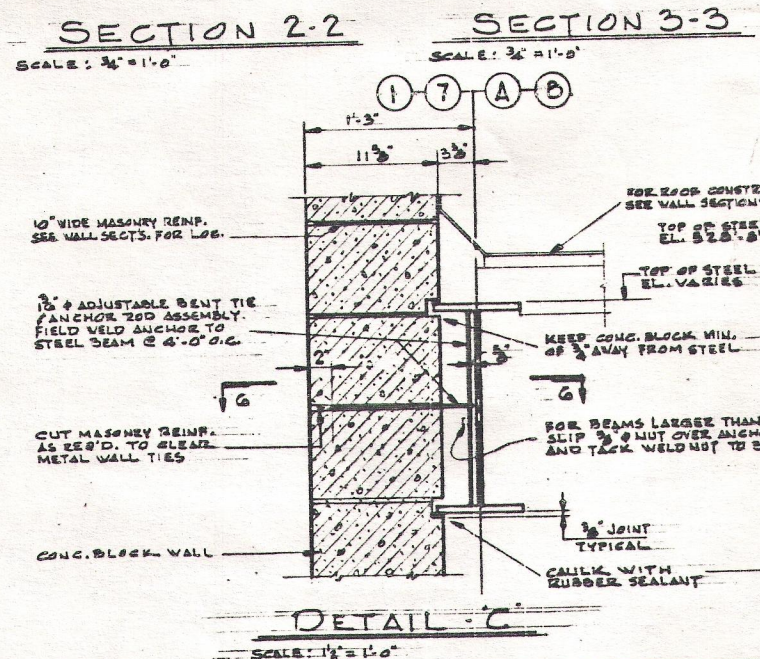
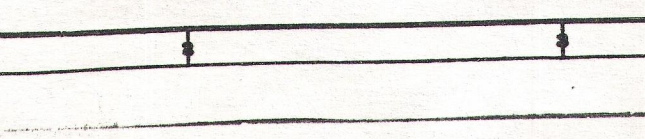
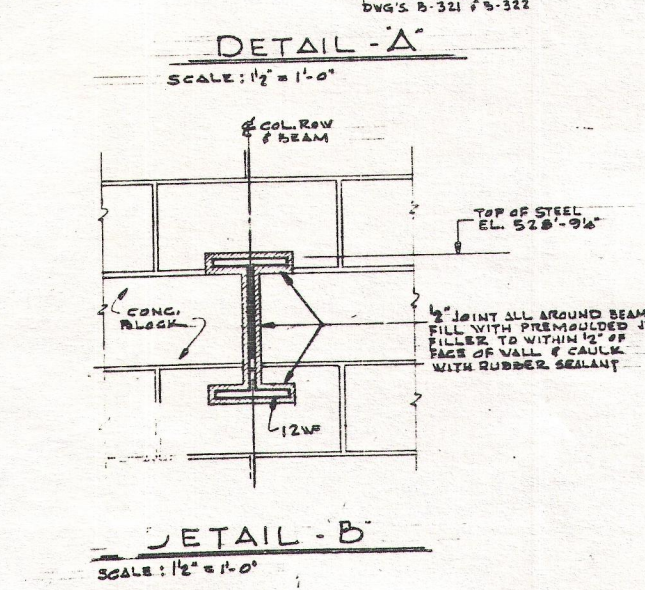
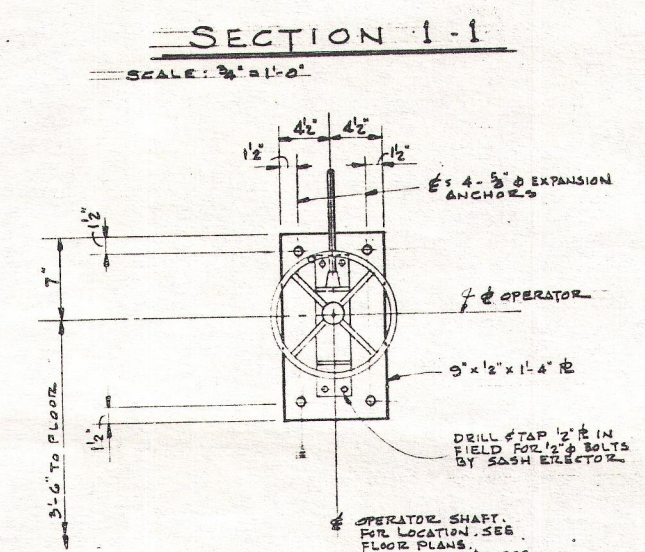
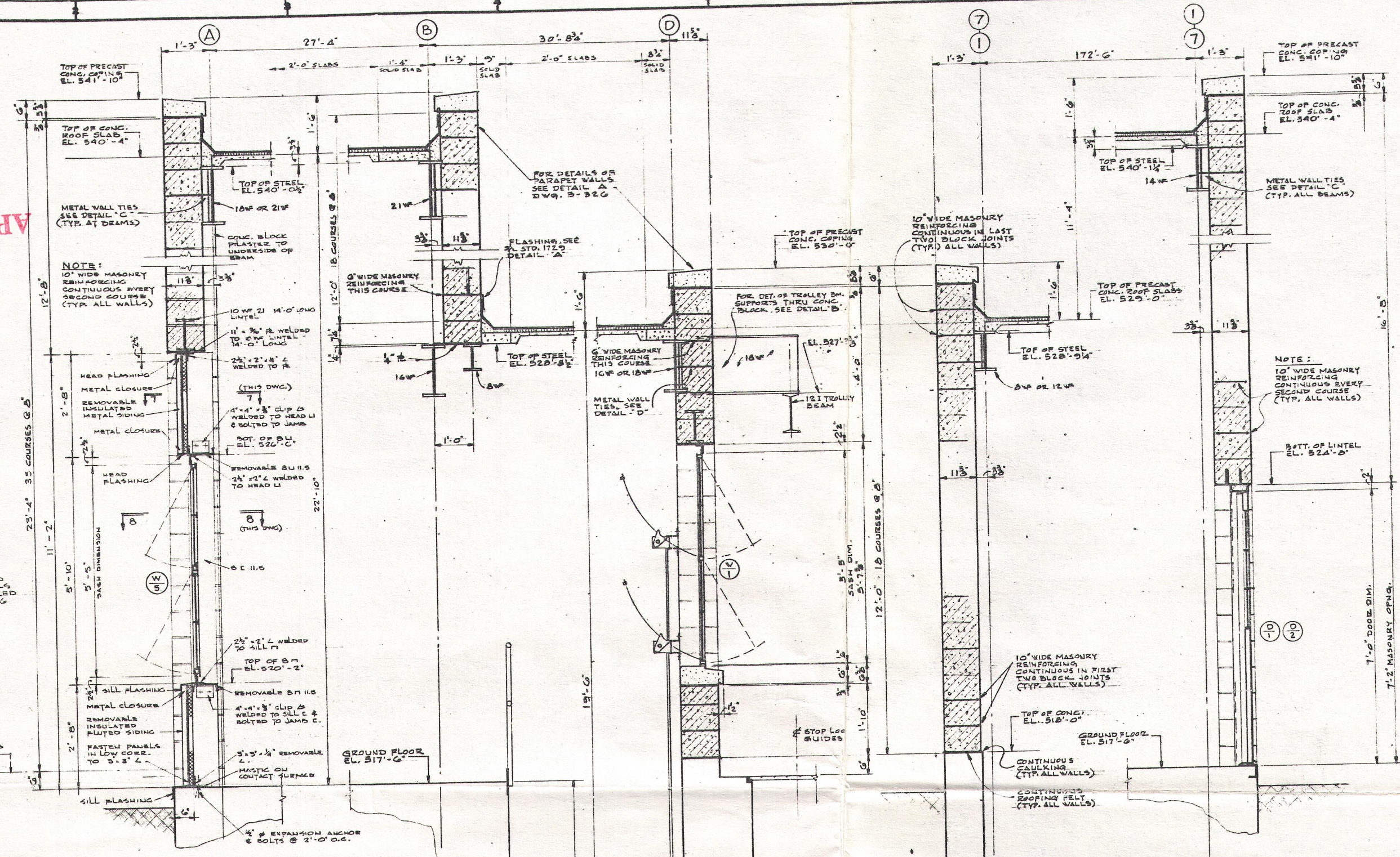


B-323

SI
APERTURE
CARD

NOTE: REMOVABLE INSULATED METAL SIDING PANELS ARE SHOWN ASSEMBLED SEE DET. DWG. B-320



NOTES

- FOR NOTES SEE DWG. B-320

REFERENCE DRAWINGS

FOR REFERENCE DRAWINGS SEE DWG. B-320

SI
APERTURE
CARD

CRIB HOUSE
WALL SECTIONS & DETAILS
DRESDEN NUCLEAR POWER STATION
UNIT 2 & 3
GENERAL ELECTRIC CO.
FOR
COMMONWEALTH EDISON CO.
CHICAGO, ILLINOIS

REVISIONS	DATE	BY	APP'D
1. REVISED TO SHOW SPECIFICATIONS FOR CONSTRUCTION	8-18-66	J. J. BARR	J. J. BARR
2. REVISED TO SHOW CONSTRUCTION DETAILS	8-23-67	J. J. BARR	J. J. BARR
3. REVISED TO SHOW FINISHES	5-22-67	J. J. BARR	J. J. BARR

SCALE AS LISTED

DESIGNED BY J. J. BARR 8-18-66

CHECKED BY C. BARR 8-23-67

APPROVED BY J. J. BARR 5-22-67

NO. 3447 5589

SARGENT & LUNDY
INCORPORATED
ENGINEERS
CHICAGO

B-323

30X S.L. 50-237
w/lt dtd 8/30/89
#8909050464