

REGULATORY INFORMATION DISTRIBUTION SYSTEM (RIDS)

ACCESSION NBR:8006050030 DOC.DATE: 80/05/28 NOTARIZED: NO DOCKET #  
 FACIL:50-244 Robert Emmet Ginna Nuclear Plant, Unit 1, Rochester G 05000244  
 AUTH.NAME AUTHOR AFFILIATION  
 WHITE,L.D. Rochester Gas & Electric Corp.  
 RECIP.NAME RECIPIENT AFFILIATION  
 Office of Nuclear Reactor Regulation  
 CRUTCHFIELD,D. Operating Reactors Branch 5

SUBJECT: Forwards WCAP-9663, "Metallurgical Investigation of Cracks  
 in Pressurizer Nozzle-to-Safe-End Weld of Robert Emmett  
 Ginna Nuclear Power Generating Station."

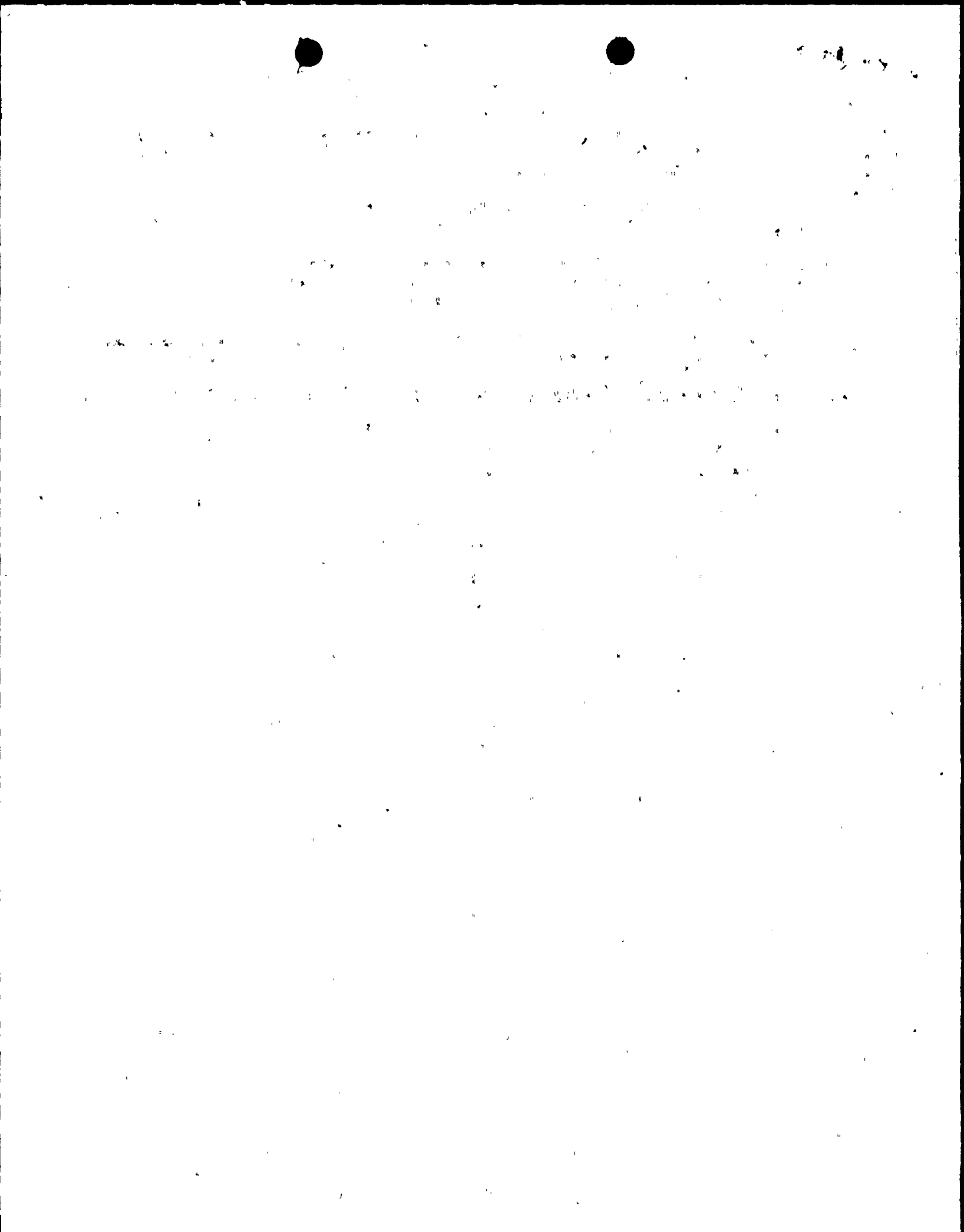
DISTRIBUTION CODE: A001S COPIES RECEIVED:LTR 1 ENCL 1 SIZE: 1+29  
 TITLE: General Distribution for after Issuance of Operating Lic

NOTES: ICY: D. ALLISON, E. ADENSAM SEE 8006050032 RPTS.

	RECIPIENT ID CODE/NAME	COPIES LTTR ENCL	RECIPIENT ID CODE/NAME	COPIES LTTR ENCL
ACTION:	05 BC ORB #2	7 7		
INTERNAL:	01 REG FILE	1 1	02 NRC PDR	1 1
	12 I&E	2 2	15 CORE PERF BR	1 1
	17 ENGR BR	1 1	18 REAC SFTY BR	1 1
	19 PLANT SYS BR	1 1	20 EEB	1 1
	21 EFLT TRT SYS	1 1	EPB-DOR	1 1
	OELD	1 0	STS GROUP LEADR	1 1
EXTERNAL:	03 LPDR	1 1	04 NSIC	1 1
	23 ACRS	16 16		

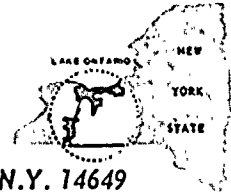
JUN 6 1980

TOTAL NUMBER OF COPIES REQUIRED: LTTR 40 ENCL 39  
38 37





ROCHESTER GAS AND ELECTRIC CORPORATION • 89 EAST AVENUE, ROCHESTER, N.Y. 14649



LEON D. WHITE, JR.  
VICE PRESIDENT

TELEPHONE  
AREA CODE 716 546-2700

May 28, 1980

Director of Nuclear Reactor Regulation  
Attention: Mr. Dennis M. Crutchfield, Chief  
Operating Reactors Branch #5  
U. S. Nuclear Regulatory Commission  
Washington, DC 20555

Subject: LER 79-023 Abnormal Degradation of Reactor Coolant  
Pressure Boundary - Pressurizer PORV Relief Nozzle  
Indications Metallurgical Investigation  
R. E. Ginna Nuclear Power Plant #1  
Docket No. 50-244

Dear Mr. Crutchfield:

Enclosed are five (5) copies of the final report on the  
"Metallurgical Investigation of Cracks in the Pressurizer  
Nozzle-to-Safe-End Weld of the Robert Emmett Ginna Nuclear  
Power Generating Station", WCAP 9663. This report documents  
the results of the metallurgical investigation of the cracks  
which were reported to NRC December 10, 1979 and by LER  
79-023 on December 21, 1979.

In summary, these cracks found on the pressurizer nozzle-  
to-safe-end weld were caused by super solidus cracking or "hot  
cracking" during original fabrication as the molten weld metal  
cooled to the solid state. Inadequate delta ferrite content  
of the stainless steel weld metal local to the weld interface  
and a geometric discontinuity at the nozzle carbon steel/weld  
metal interface were the main contributors to the cracking  
process. This cracking is exclusive to the particular local  
area on the weld and is not considered generic.

Very truly yours,

*L. D. White, Jr.*

L. D. White, Jr.

*App  
5/11*

Enclosures

xc: Mr. Boyce Grier w/enclosure

8006050030

*P*



Handwritten marks and characters in the top right corner.