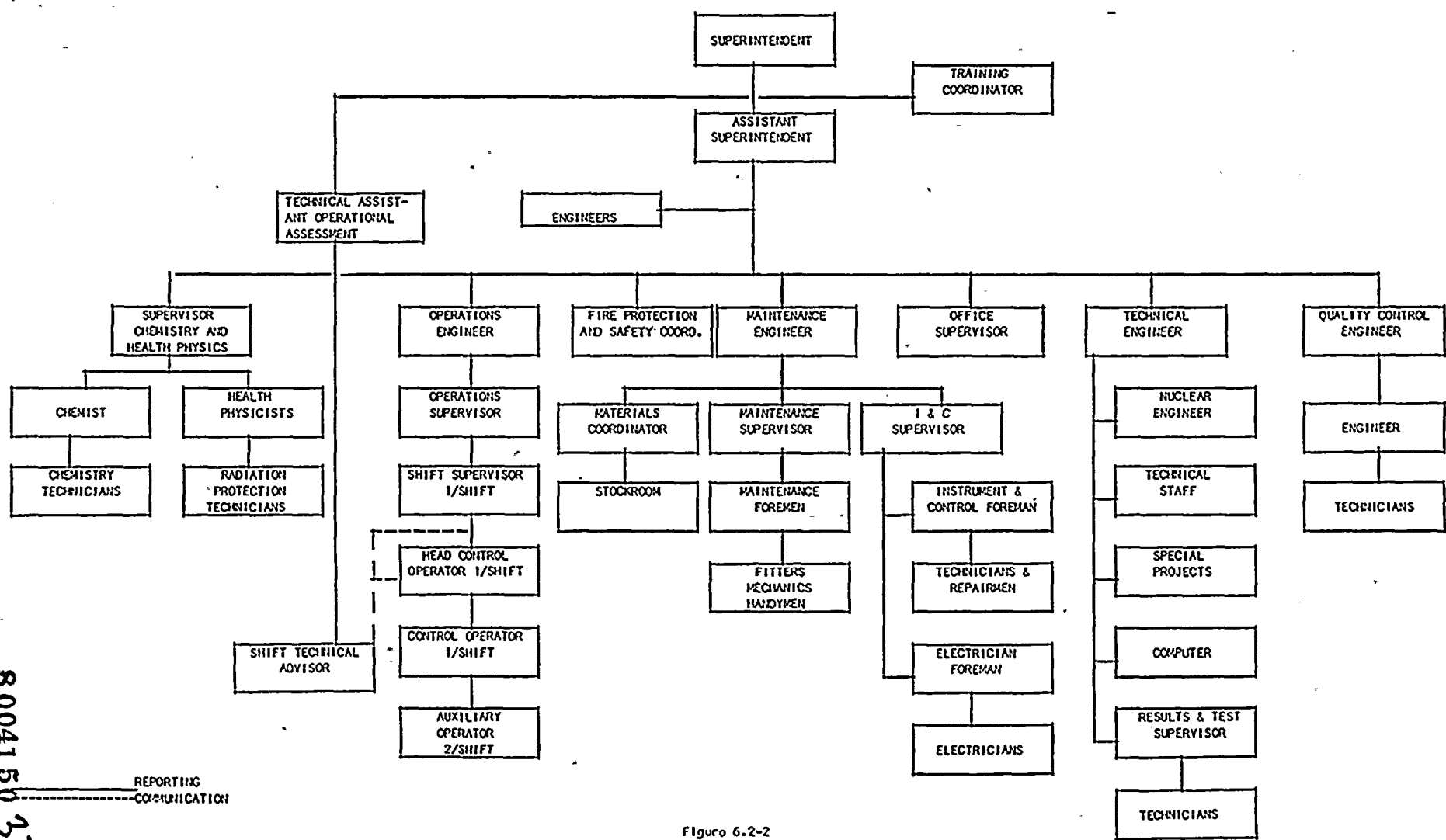


ROCHESTER GAS AND ELECTRIC CORPORATION
GINNA STATION ORGANIZATION



REPORTING
COMMUNICATION

Figure 6.2-2

8004150 335

Attachment B

The management organization chart, Figure 6.2-1, has been revised to reflect the position of Shift Technical Advisor. The Ginna Station organization chart reflects the Shift Technical Advisors, the Technical Assistant for Operational Assessment Engineer, minor changes in responsibility under the Maintenance Engineer, the Office Supervisor, and the Technical Engineer.

The Shift Technical Advisor and the Operational Assessment Engineer as being added to reflect implementation of TMI Short Term Lessons Learned. Changes under the Maintenance Engineer reflect the addition of a material coordinator and redistribution of responsibilities. The Office Supervisor is added due to his supervision of Ginna Central Records. Additional details concerning the Technical Engineer's responsibilities are provided.

The changes do not degrade the offsite management control or the onsite management of Ginna Station.

Attachment C
Fee Determination

The proposed Technical Specification change is administrative in nature and has no safety or environmental significance. It therefore falls within Class II as defined in 10 CFR Section 170.22 with a fee of \$1200.00.