

ACCELERATED DISTRIBUTION DEMONSTRATION SYSTEM

REGULATORY INFORMATION DISTRIBUTION SYSTEM (RIDS)

ACCESSION NBR: 9004190236 DOC. DATE: 90/03/31 NOTARIZED: NO DOCKET #
 FACIL: 50-335 St. Lucie Plant, Unit 1, Florida Power & Light Co. 05000335
 50-389 St. Lucie Plant, Unit 2, Florida Power & Light Co. 05000389
 AUTH. NAME AUTHOR AFFILIATION
 BONETT, D.M. Florida Power & Light Co.
 SAGER, D.A. Florida Power & Light Co.
 RECIP. NAME RECIPIENT AFFILIATION

SUBJECT: Monthly operating repts for Mar 1990 for St Lucie Units 1 & 2.W/900412 ltr.

DISTRIBUTION CODE: IE24D COPIES RECEIVED: LTR 1 ENCL 1 SIZE: 9
 TITLE: Monthly Operating Report (per Tech Specs)

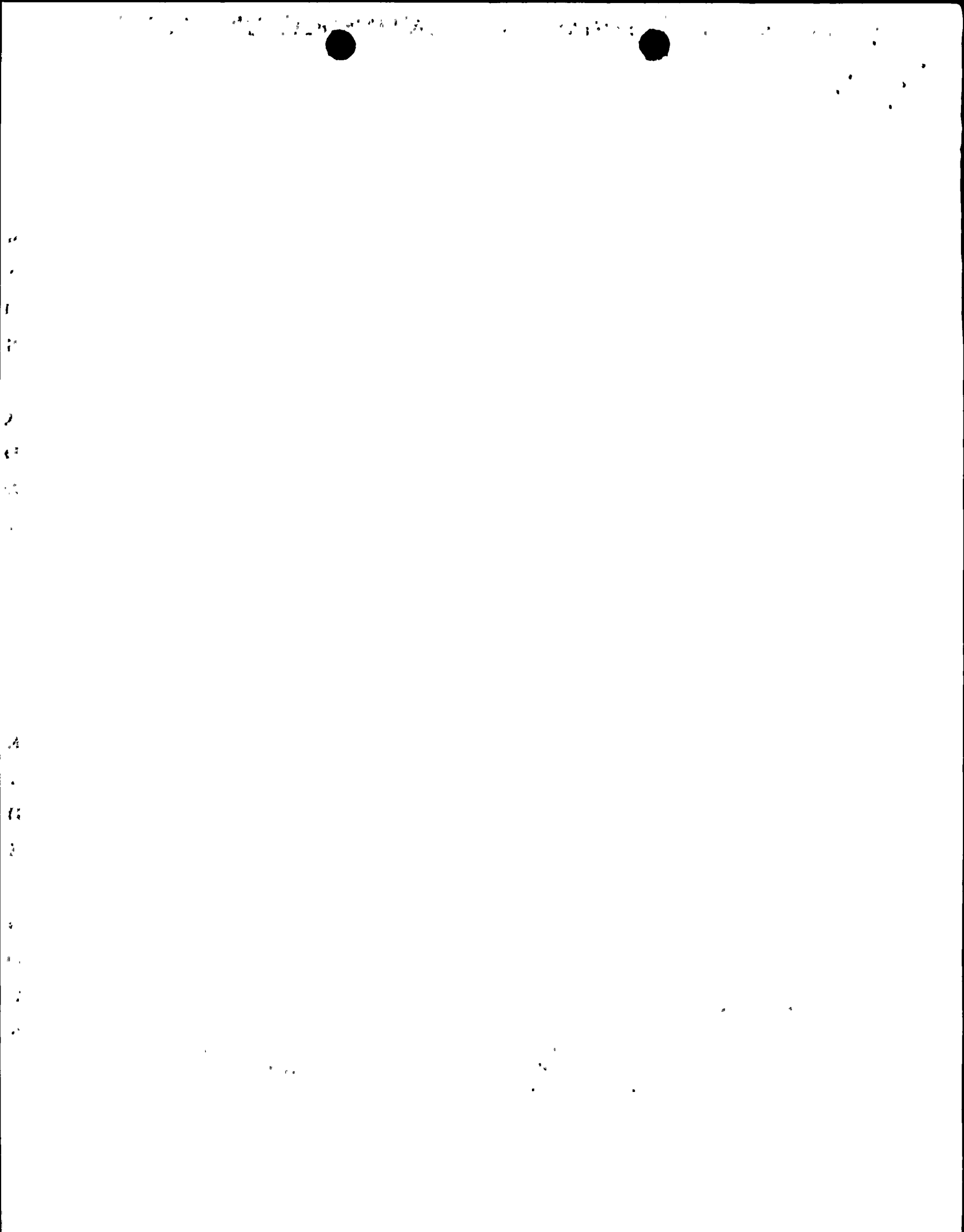
NOTES:

	RECIPIENT ID CODE/NAME	COPIES LTR	COPIES ENCL	RECIPIENT ID CODE/NAME	COPIES LTR	COPIES ENCL
	PD2-2 LA	3	3	PD2-2 PD	1	1
	NORRIS, J	1	1			
INTERNAL:	ACRS	10	10	AEOD/DOA	1	1
	AEOD/DSP/TPAB	1	1	IRM TECH ADV	2	2
	NRR/DLPQ/LPEB10	1	1	NRR/DOEA/OEAB11	1	1
	NUDOCS-ABSTRACT	1	1	<u>REG FILE</u> 01	1	1
	RGN2	1	1			
EXTERNAL:	EG&G STUART, V.A	1	1	LPDR	1	1
	NRC PDR	1	1	NSIC	1	1

NOTE TO ALL "RIDS" RECIPIENTS:

PLEASE HELP US TO REDUCE WASTE! CONTACT THE DOCUMENT CONTROL DESK,
 ROOM P1-37 (EXT. 20079) TO ELIMINATE YOUR NAME FROM DISTRIBUTION
 LISTS FOR DOCUMENTS YOU DON'T NEED!

TOTAL NUMBER OF COPIES REQUIRED: LTR 28 ENCL 28





P.O. Box 14000, Juno Beach, FL 33408-0420

APR 12 1990

L-90-132
10 CFR 50.36

U. S. Nuclear Regulatory Commission
Attn: Document Control Desk
Washington, D. C. 20555

Gentlemen:

RE: St. Lucie Units 1 and 2
Docket Nos. 50-335 and 50-389
Monthly Operating Report

Attached are the March 1990 Operating Status and Summary of Operating Experience Reports for St. Lucie Units 1 and 2.

Very truly yours,

D. A. Sager
Vice President
St. Lucie Plant

DAS/DMB

Attachments

cc: Stewart D. Ebnetter, Regional Administrator, Region II, USNRC
Senior Resident Inspector, USNRC, St. Lucie Plant

9004190236 900331
PDR ADOCK 05000335
R PDC

AVERAGE DAILY UNIT POWER LEVEL

DOCKET NO. 50-335
UNIT St. Lucie #1
DATE April 12, 1990
COMPLETED BY D. M. Bonett
TELEPHONE (407) 694-4432

MONTH March, 1990

DAY AVERAGE DAILY POWER LEVEL
(MWe-Net)

3/ 1/90	-2
3/ 2/90	-2
3/ 3/90	-2
3/ 4/90	-2
3/ 5/90	-2
3/ 6/90	-2
3/ 7/90	-2
3/ 8/90	-2
3/ 9/90	-2
3/10/90	-3
3/11/90	-2
3/12/90	-2
3/13/90	-2
3/14/90	-3
3/15/90	-3
3/16/90	-5
3/17/90	-5
3/18/90	-5
3/19/90	-3
3/20/90	-3
3/21/90	-4
3/22/90	-5
3/23/90	-5
3/24/90	-5
3/25/90	-4
3/26/90	-3
3/27/90	-3
3/28/90	-3
3/29/90	-3
3/30/90	-3
3/31/90	-4

OPERATING DATA REPORT

DOCKET NO 50 - 335
 DATE 4/12/90
 COMPLETED BY D. M. BONETT
 TELEPHONE 407/694/4432

OPERATING STATUS

1. UNIT NAME: ST. LUCIE UNIT 1
2. REPORTING PERIOD: MARCH 1990
3. LICENSED THERMAL POWER (MWT): _____ 2700
4. NAMEPLATE RATING (GROSS MWE): _____ 850
5. DESIGN ELECTRICAL RATING (NET MWE): _____ 830
6. MAXIMUM DEPENDABLE CAPACITY (GROSS MWE): _____ 872
7. MAXIMUM DEPENDABLE CAPACITY (NET MWE): _____ 839
8. IF CHANGES OCCUR IN CAPACITY RATINGS (ITEMS NUMBER 3 THROUGH 7) SINCE LAST REPORT, GIVE REASONS: _____
9. POWER LEVEL TO WHICH RESTRICTED, IF ANY (NET MWE) _____
10. REASONS FOR RESTRICTIONS, IF ANY: _____

	MONTHLY	-YTD-	CUMULATIVE
11. HOURS IN REPORT PERIOD: _____	744	2160	116376.0
12. NUMBER OF HOURS REACTOR WAS CRITICAL _____	0.0	507.0	87895.6
13. REACTOR RESERVE SHUTDOWN HOURS _____	0.0	0.0	205.3
14. HOURS GENERATOR ON-LINE _____	0.0	506.9	87143.9
15. UNIT RESERVE SHUTDOWN HOURS _____	0.0	0.0	39.3
16. GROSS THERMAL ENERGY GENERATED (MWH) _____	0	1348855	224306495
17. GROSS ELECTRICAL ENERGY GENERATED (MWH) _____	0	454310	73897380
18. NET ELECTRICAL ENERGY GENERATED (MWH) _____	-3085	424288	69823153
19. UNIT SERVICE FACTOR _____	0.0	23.5	74.9
20. UNIT AVAILABILITY FACTOR _____	0.0	23.5	74.9
21. CAPACITY FACTOR (USING MDC NET) _____	0.0	23.4	74.6
22. CAPACITY FACTOR (USING DER NET) _____	0.0	23.7	73.4
23. UNIT FORCED OUTAGE RATE _____	0.0	2.3	3.5
24. SHUTDOWNS SCHEDULED OVER NEXT 6 MONTHS :			

25. IF SHUT DOWN AT END OF REPORT PERIOD, ESTIMATED DATE OF STARTUP: 4/15/90

UNIT SHUTDOWNS AND POWER REDUCTIONS

DOCKET NO. 50-335

UNIT NAME St. Lucie #1

DATE April 12, 1990

COMPLETED BY D. M. Bonett

TELEPHONE (407) 694-4432

REPORT MONTH March, 1990

No.	Date	Type ¹	Duration (Hours)	Reason ²	Method of Shutting Down Reactor ³	Licensee Event Report #	System Code ⁴	Component Code ⁵	Cause & Corrective Action to Prevent Recurrence
02	900122	S	744.0	C	4		RC	FUELXX	Unit 1 remained shutdown for a scheduled refueling and maintenance outage.

1

F Forced
S Scheduled

2

Reason
A - Equipment Failure (Explain)
B - Maintenance or Test
C - Refueling
D - Regulatory Restriction
E - Operator Training & License Examination
F - Administrative
G - Operational Error (Explain)
H - Other (Explain)

3

Method
1 - Manual
2 - Manual Scram
3 - Automatic Scram
4 - Continued
5 - Load Reduction
9 - Other (Explain)

4

Exhibit G-Instructions for Preparation of Data Entry Scheets Licensee Event Report (LER) File (NUREG-0161)

5

Exhibit 1 - Same Source

SUMMARY OF OPERATING EXPERIENCE

DOCKET NO. 50-335

UNIT St. Lucie #1

DATE April 12, 1990

COMPLETED BY D. M. Bonett

TELEPHONE (407) 694-4432

REPORT MONTH March, 1990

Unit 1 remained shutdown for a scheduled refueling and maintenance outage.

In accordance with requirements of Technical Specification 6.9.1.6, there were no challenges to the PORVs or safety valves during the report period.

AVERAGE DAILY UNIT POWER LEVEL

DOCKET NO. 50-389

UNIT St. Lucie #2

DATE April 12, 1990

COMPLETED BY D. M. Bonett

TELEPHONE (407) 694-4432

MONTH March, 1990

DAY AVERAGE DAILY POWER LEVEL

(MWe-Net)

3/ 1/90	861
3/ 2/90	861
3/ 3/90	862
3/ 4/90	861
3/ 5/90	861
3/ 6/90	860
3/ 7/90	860
3/ 8/90	860
3/ 9/90	860
3/10/90	858
3/11/90	857
3/12/90	857
3/13/90	856
3/14/90	856
3/15/90	856
3/16/90	855
3/17/90	854
3/18/90	853
3/19/90	854
3/20/90	853
3/21/90	827
3/22/90	780
3/23/90	857
3/24/90	857
3/25/90	857
3/26/90	832
3/27/90	780
3/28/90	857
3/29/90	858
3/30/90	857
3/31/90	856

OPERATING DATA REPORT

DOCKET NO 50 - 389
 DATE 4/12/90
 COMPLETED BY D. M. BONETT
 TELEPHONE 407/694/4432

OPERATING STATUS

1. UNIT NAME: ST. LUCIE UNIT 2
2. REPORTING PERIOD: MARCH 1990
3. LICENSED THERMAL POWER (MWT): _____ 2700
4. NAMEPLATE RATING (GROSS MWE): _____ 850
5. DESIGN ELECTRICAL RATING (NET MWE): _____ 830
6. MAXIMUM DEPENDABLE CAPACITY (GROSS MWE): _____ 882
7. MAXIMUM DEPENDABLE CAPACITY (NET MWE): _____ 839
8. IF CHANGES OCCUR IN CAPACITY RATINGS (ITEMS NUMBER 3 THROUGH 7) SINCE LAST REPORT, GIVE REASONS: _____
9. POWER LEVEL TO WHICH RESTRICTED, IF ANY (NET MWE) _____
10. REASONS FOR RESTRICTIONS, IF ANY: _____

	MONTHLY	-YTD-	CUMULATIVE
11. HOURS IN REPORT PERIOD: _____	744	2160	58273.0
12. NUMBER OF HOURS REACTOR WAS CRITICAL _____	744.0	1920.5	50089.4
13. REACTOR RESERVE SHUTDOWN HOURS _____	0.0	0.0	0.0
14. HOURS GENERATOR ON-LINE _____	744.0	1881.2	49235.9
15. UNIT RESERVE SHUTDOWN HOURS _____	0.0	0.0	0.0
16. GROSS THERMAL ENERGY GENERATED (MWH) _____	1995396	4990974	128788370
17. GROSS ELECTRICAL ENERGY GENERATED (MWH) _____	666710	1669530	42921440
18. NET ELECTRICAL ENERGY GENERATED (MWH) _____	632930	1578661	40591775
19. UNIT SERVICE FACTOR _____	100.0	87.1	84.5
20. UNIT AVAILABILITY FACTOR _____	100.0	87.1	84.5
21. CAPACITY FACTOR (USING MDC NET) _____	101.4	87.1	85.0
22. CAPACITY FACTOR (USING DER NET) _____	102.5	88.1	84.9
23. UNIT FORCED OUTAGE RATE _____	0.0	12.9	5.6
24. SHUTDOWNS SCHEDULED OVER NEXT 6 MONTHS : _8/29/90; 63 DAYS_____			

25. IF SHUT DOWN AT END OF REPORT PERIOD, ESTIMATED DATE OF STARTUP: _____

UNIT SHUTDOWNS AND POWER REDUCTIONS

DOCKET NO. 50-389

UNIT NAME St. Lucie #2

DATE April 12, 1990

COMPLETED BY D. M. Bonett

TELEPHONE (407) 694-4432

REPORT MONTH March, 1990

No.	Date	Type ¹	Duration (Hours)	Reason ²	Method of Shutting Down Reactor ³	Licensee Event Report #	System Code ⁴	Component Code ⁵	Cause & Corrective Action to Prevent Recurrence
									Unit 2 operated at essentially full power and had no shutdowns or significant power reductions.

1
F Forced
S Scheduled

2
Reason
A - Equipment Failure (Explain)
B - Maintenance or Test
C - Refueling
D - Regulatory Restriction
E - Operator Training & License Examination
F - Administrative
G - Operational Error (Explain)
H - Other (Explain)

3
Method
1 - Manual
2 - Manual Scram
3 - Automatic Scram
4 - Continued
5 - Load Reduction
9 - Other (Explain)

4
Exhibit G- Instructions for Preparation of Data Entry Sheets Licensee Event Report (LER) File (NUREG-0161)

5
Exhibit 1 - Same Source

SUMMARY OF OPERATING EXPERIENCE

DOCKET NO. 50-389

UNIT St. Lucie #2

DATE April 12, 1990

COMPLETED BY D. M. Bonett

TELEPHONE (407) 694-4432

REPORT MONTH March, 1990

Unit 2 operated at essentially full power and had no shutdowns or significant power reductions.

In accordance with requirements of Technical Specification 6.9.1.6, there were no challenges to the PORVs or safety valves during the report period.