

REGULATORY INFORMATION DISTRIBUTION SYSTEM (RIDS)

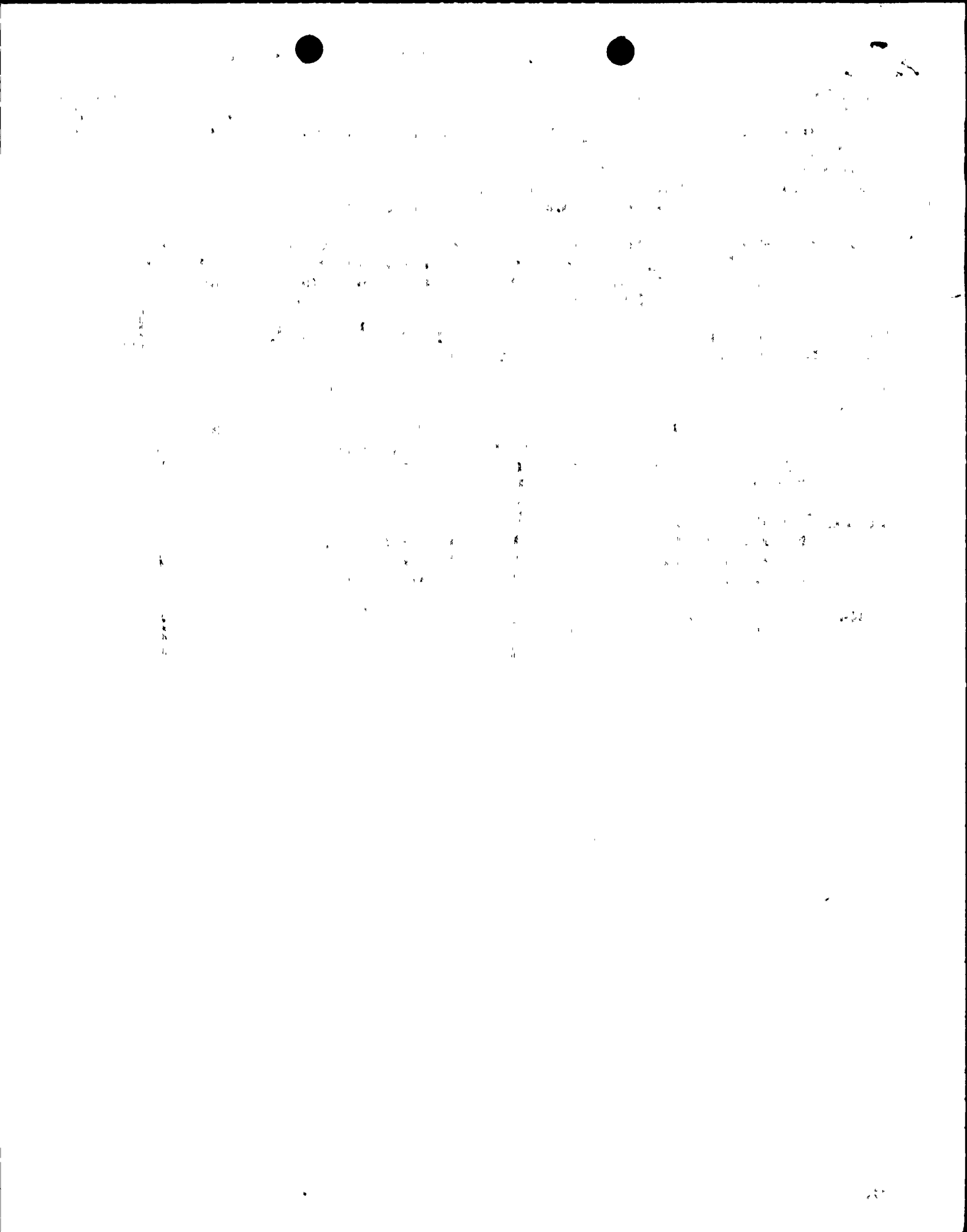
ACCESSION NBR: 8707070229      DOC. DATE: 87/07/01      NOTARIZED: NO      DOCKET #  
 FACIL: 50-335 St. Lucie Plant, Unit 1, Florida Power & Light Co.      05000335  
 50-389 St. Lucie Plant, Unit 2, Florida Power & Light Co.      05000389  
 AUTH. NAME      AUTHOR AFFILIATION  
 WOODY, C. D.      Florida Power & Light Co.  
 RECIP. NAME      RECIPIENT AFFILIATION  
                                  Document Control Branch (Document Control Desk)

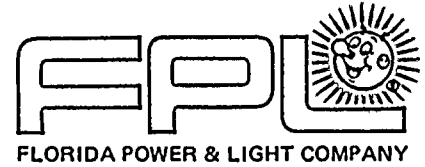
SUBJECT: Informs that engineering evaluation re effects of deteriorating mangroves on wave runup completed, per 870501 commitment. Based on evaluation, deterioration of mangroves does not create condition of any safety significance.

DISTRIBUTION CODE: A001D      COPIES RECEIVED: LTR 1 ENCL 0      SIZE: 1  
 TITLE: OR Submittal: General Distribution

NOTES:

	RECIPIENT		COPIES			RECIPIENT		COPIES	
	ID CODE/NAME		LTR	ENCL		ID CODE/NAME		LTR	ENCL
	PD2-2 LA		1	0		PD2-2 PD		5	5
	TOURIGNY, E		1	1					
INTERNAL:	ARM/DAF/LFMB		1	0		NRR/DEST/ADE		1	1
	NRR/DEST/ADS		1			NRR/DOEA/TSB		1	1
	NRR/PMAS/ILRB		1			OGC/HDS2		1	0
	<u>REG FILE</u> 01		1			RES/DE/EIB		1	
EXTERNAL:	EG&G BRUSKE, S		1			LPDR		1	
	NRC PDR		1			NSIC		1	





JULY 1 1987  
L-87-277

U.S. Nuclear Regulatory Commission  
Document Control Desk  
Washington, D.C. 20555

Gentlemen:

Re: St. Lucie Units 1 & 2  
Docket Nos. 50-335 and 50-389  
Special Report on Mangrove Survey  
Effects of Deteriorating Mangroves on Wave Runup Analysis

In accordance with Technical Specification 4.7.6.1.2, the mangrove survey was conducted and the results submitted in the St. Lucie Annual Operating Report by FPL letter L-87-106 dated March 2, 1987. As stated in letter L-87-195 dated May 1, 1987, the engineering evaluation of the mangroves would be completed by July 15, 1987.

The engineering evaluation has been completed, and concludes that mangroves are not required to maintain the design basis of the St. Lucie site to protect safety-related structures and equipment from Probable Maximum Hurricane surge and erosion damage. Therefore, the deterioration of the mangroves experienced does not create a condition of any safety significance.

Please contact us if you have any questions about this submittal.

Very truly yours,

C. O. Woody  
Group Vice President  
Nuclear Energy

COW/GRM/gp

cc: Dr. J. Nelson Grace, Regional Administrator, Region II, USNRC  
Senior Resident Inspector, USNRC, St. Lucie Plant

8707070229 870701  
PDR ADDCK 05000335  
P PDR

*Aool  
/10*



The following information was obtained from the records of the  
 Department of the Interior, Bureau of Land Management, on  
 the subject of the above-captioned tract of land.  
 The tract of land described in the above-captioned  
 instrument is situated in the County of \_\_\_\_\_  
 State of \_\_\_\_\_ and is more particularly  
 described as follows:

This instrument was recorded in the County of \_\_\_\_\_  
 State of \_\_\_\_\_ on the \_\_\_\_\_ day of \_\_\_\_\_  
 19\_\_\_\_.