

February 28, 1986

Docket No. 50-335

MEMORANDUM FOR: Ashok C. Thadani, Director
PWR Project Directorate #8
Division of PWR Licensing-B

FROM: Donald E. Sells, Project Manager
PWR Project Directorate #8
Division of PWR Licensing-B

SUBJECT: MEETING SUMMARY - ST. LUCIE 1

On Tuesday, February 4, 1986, a meeting was held in Bethesda, Maryland with Florida Power and Light Company (FP&L) to discuss the results of the core support barrel (CSB) inspection. This inspection was conducted during the last refueling outage to inspect the repaired areas of the CSB. The repairs were necessitated by damage to the CSB that was detected during the cycle 6 outage. A list of attendees is enclosed.

The presentation consisted of a brief presentation of the chronology leading up to the inspection of the CSB. This was followed by a description of the configuration and the extent of the damage to the CSB that was detected during the cycle 6 outage. This presentation included a description of the test equipment and a tape display of its sensitivity. The slides used in this presentation are also enclosed. Following this presentation, a detailed discussion of the CSB inspection results was presented using a video tape.

The conclusion reached at the end of the inspection is that no further degradation of the CSB has occurred and all patches and plugs are in place with no detectable or significant change from the installed condition. No further cracking of the CSB has occurred and no crack propagation could be found.

FP&L does not propose to conduct any special CSB inspections in the future. This matter must be reviewed and addressed by the NRC staff. The basis of this review will be the final report of the inspection results. This report should be available in March 1986.

/s/

Donald E. Sells, Project Manager
PWR Project Directorate #8
Division of PWR Licensing-B

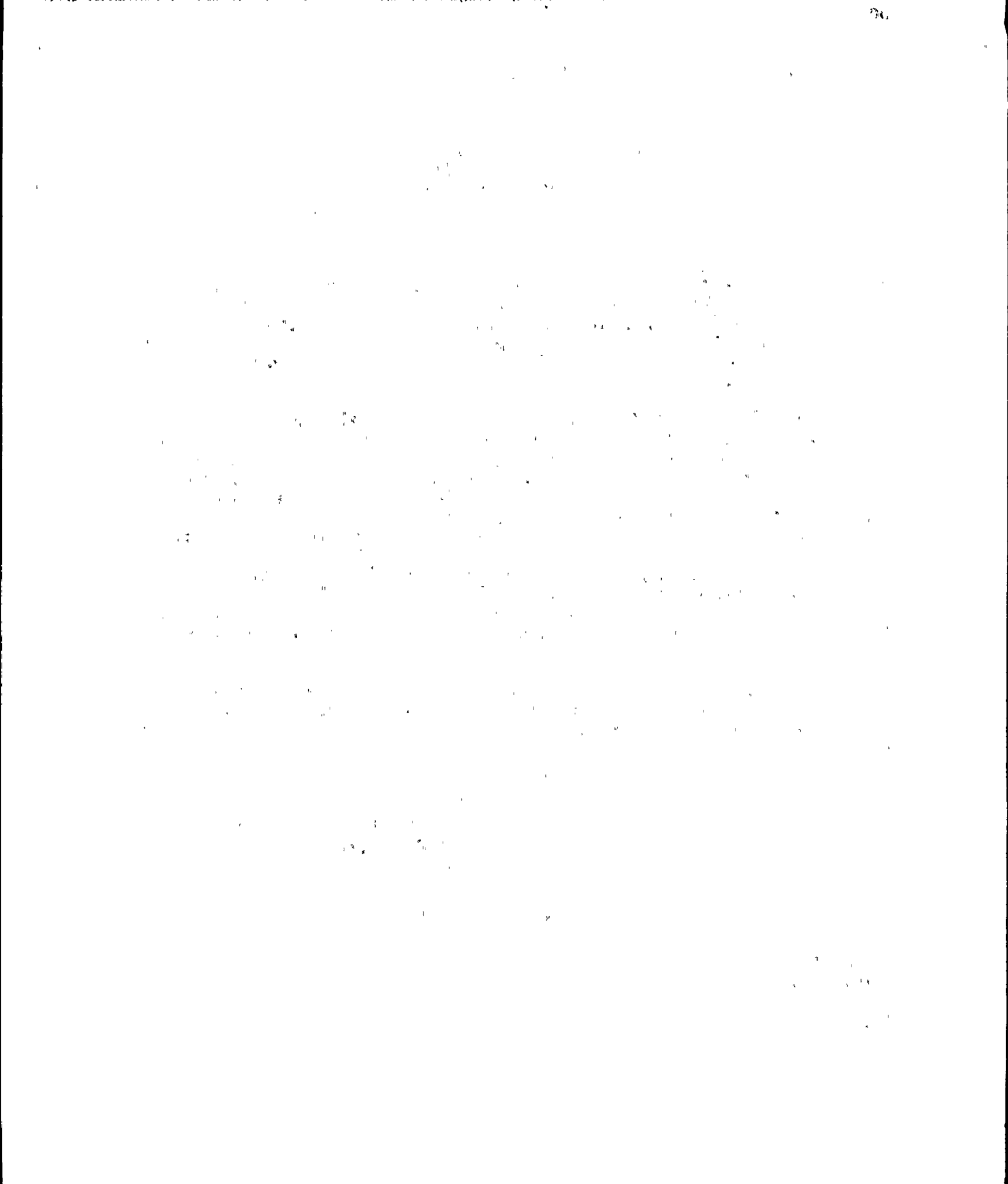
Enclosures:
As stated

Distribution:
Central File ✓
Branch Rdg. File
DSells

cc w/enclosures:
See next page

DSells
PDR
DSells;ef
2/27/86

8603100552 860228
PDR ADCK 05000335
Q PDR



CC:

Mr. Jack Shreve
Office of the Public Counsel
Room 4, Holland Building
Tallahassee, Florida 32304

Resident Inspector
c/o U.S. NRC
7585 S. Hwy A1A
Jensen Beach, Florida 33457.

State Planning & Development
Clearinghouse
Office of Planning & Budget
Executive Office of the Governor
The Capitol Building
Tallahassee, Florida 32301

Harold F. Reis, Esq.
Newman & Holtzinger
1615 L Street, N.W.
Washington, DC 20036

Norman A. Coll, Esq.
McCarthy, Steel, Hector and Davis
14th Floor, First National Bank Building
Miami, Florida 33131

Administrator
Department of Environmental Regulation
Power Plant Siting Section
State of Florida
2600 Blair Stone Road
Tallahassee, Florida 32301

Mr. Weldon B. Lewis, County
Administrator
St. Lucie County
2300 Virginia Avenue, Room 104
Fort Pierce, Florida 33450

Mr. Charles B. Brinkman, Manager
Washington - Nuclear Operations
Combustion Engineering, Inc.
7910 Woodmont Avenue
Bethesda, Maryland 20814

Mr. Allan Schubert, Manager
Public Health Physicist
Department of Health and
Rehabilitative Services
1323 Winewood Blvd.
Tallahassee, Florida 32301

Regional Administrator, Region II
U.S. Nuclear Regulatory Commission
Executive Director for Operations
101 Marietta Street N.W., Suite 2900
Atlanta, Georgia 30323

10/10/10



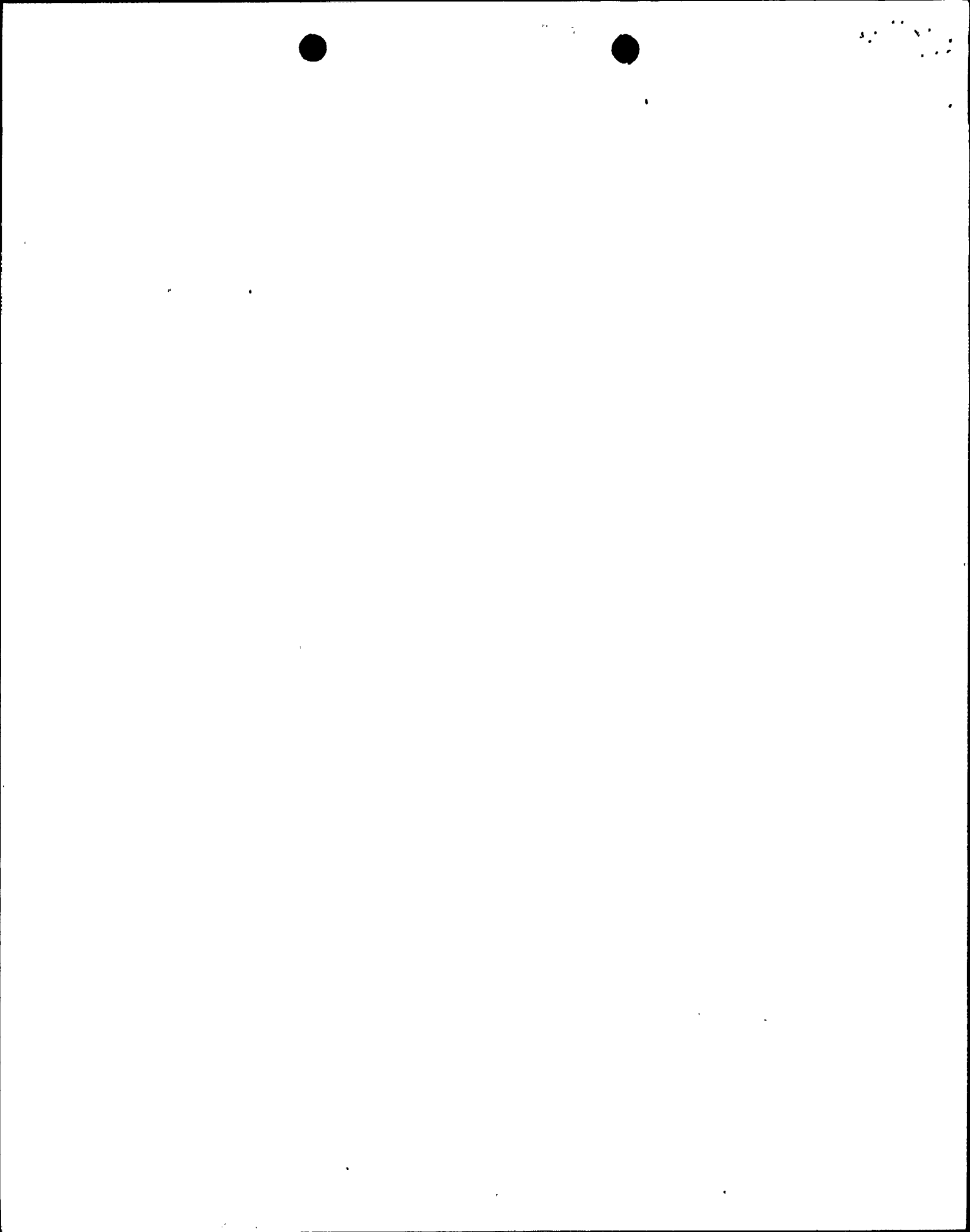
10/10/10

Licensee: Florida Power and Light Company

*Copies also sent to those people on service (cc) list for subject plant(s).

Docket File
NRC PDR
L PDR
PBD-8 Rdg
ATHadani
DSells
OELD
EJordan
BGrimes
ACRS-10
NRC Participants:

FMiraglia
FSchroeder
DCrutchfield
CYCheng



List of Attendees

NRC

F. J. Miraglia
F. Schroeder
D. Crutchfield
A. Thadani
D. E. Sells
C. Y. Cheng

FP&L/CE

R. Stevens
M. A. Schoppman
M. E. Lamp
P. Leombroni
C. Molnar
J. Mullyoly

FLORIDA POWER & LIGHT CO.

CORE SUPPORT BARREL INSPECTION

ST. LUCIE UNIT 1

FEBRUARY, 1986

AGENDA

- INTRODUCTION FPL
 - CHRONOLOGICAL REVIEW
 - FPL INSPECTION COMMITMENTS
 - CURRENT STATUS

- INSPECTION PROGRAM C-E
 - CSB INSPECTION DURING POST-CYCLE 6
 - REFUELING OUTAGE

- INSPECTION CONCLUSIONS C-E

- FUTURE INSPECTION FPL

BACKGROUND

- PROBLEM DETECTED 5/83
- PRELIMINARY ASSESSMENT 04/12/83
- RECOVERY PLAN FORMULATED 04/25/83
- REVIEWED LPM & IVM DATA 06/03/83
- REVIEWED TS/CSB INSPECTION RESULTS 08/16/83
- PROPOSED FINAL REPORT CONTENT 09/22/83
- PRESENTED FAILURE MECHANISM ANALYSIS 11/10/83
- FINAL REPORT SUBMITTED TO NRC 02/10/84
- NRC CONCURS WITH RETURN TO POWER 03/14/84
- RETURN TO POWER 05/16/84
- PRE-INSPECTION BRIEFING 06/04/85

FPL INSPECTION COMMITMENTS

- CSB REPAIRED AREA INSPECTION DURING POST-CYCLE 6 REFUELING OUTAGE

- CONSIDER ENHANCEMENTS TO CSB INSPECTION TECHNIQUES
 - IMPROVED STABILITY AND REPEATABILITY OF DELIVERY SYSTEM
VARIABLE INTENSITY OBLIQUE LIGHTING

CURRENT STATUS

- POST CYCLE 6 CSB INSPECTION COMPLETED

- PLANT RETURNED TO SERVICE

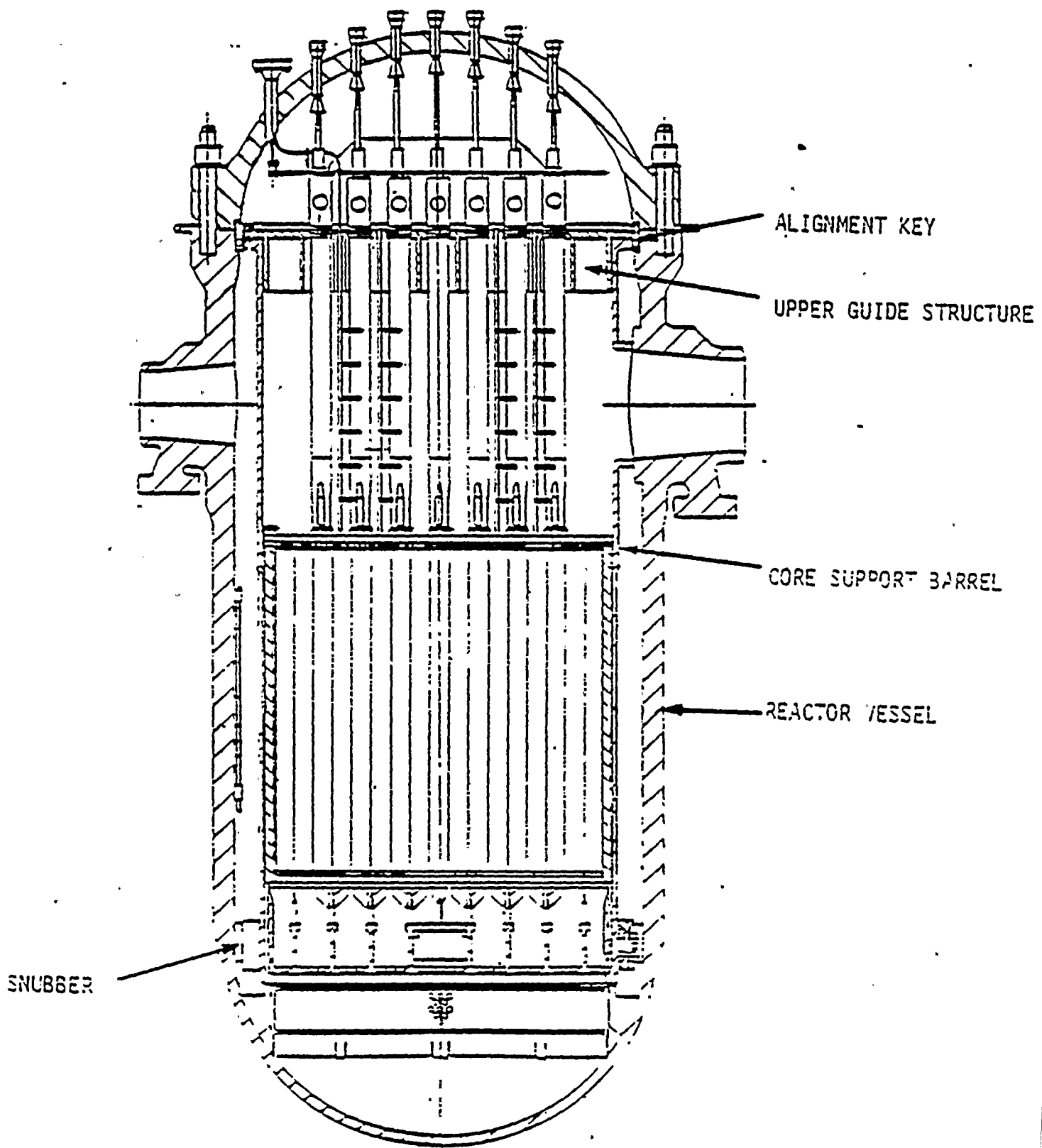
- FINAL INSPECTION REPORT BEING PREPARED

INSPECTION PROGRAM
OUTLINE OF DISCUSSION

- DESCRIPTION OF COMPONENTS TO BE INSPECTED
- DESCRIPTION OF TYPICAL INSTALLED PLUG AND PATCH
- INSPECTION PROGRAM

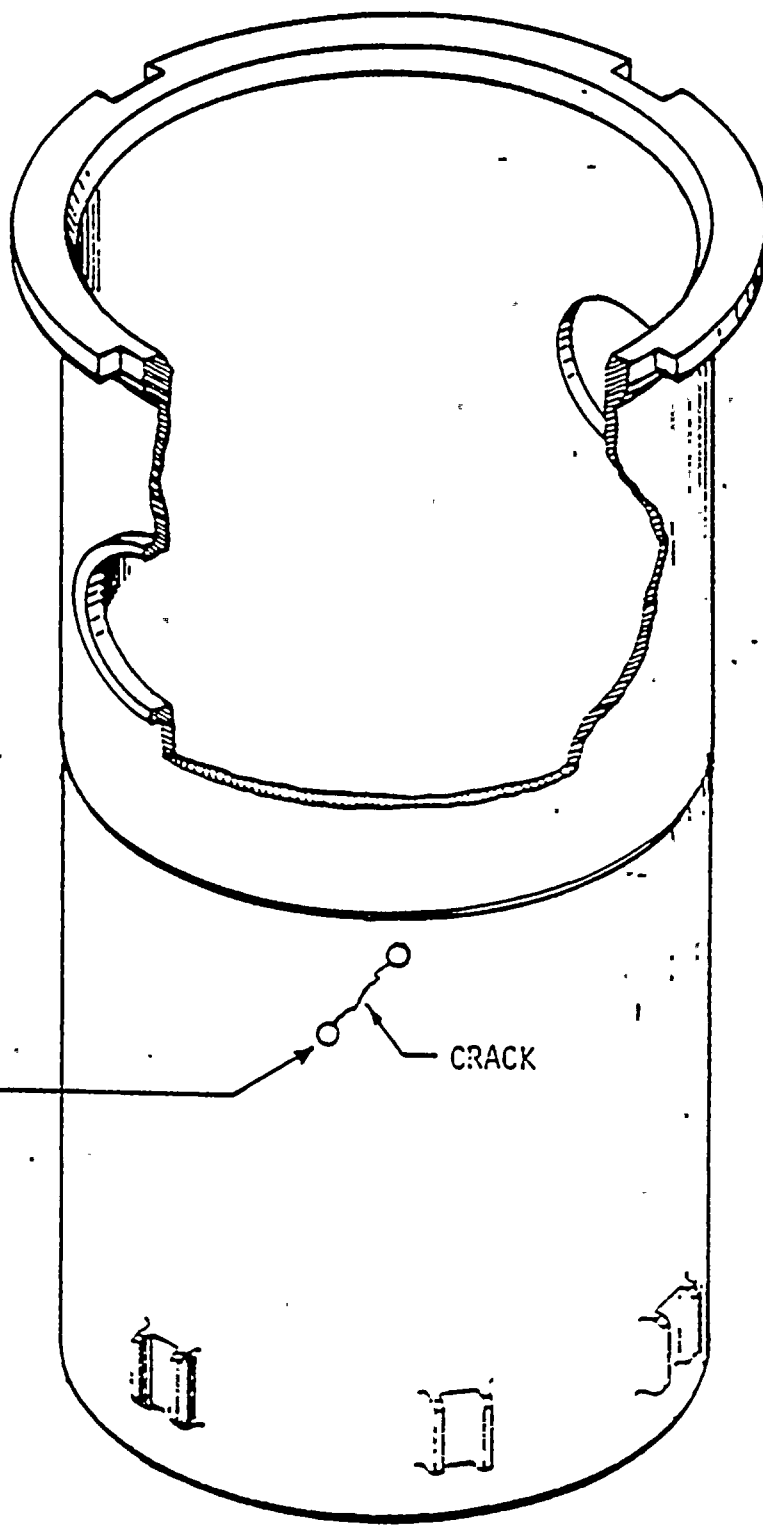
VISUAL INSPECTION TECHNIQUE
MECHANICAL INSPECTION TECHNIQUE

- INSPECTION RESULTS AND CONCLUSIONS



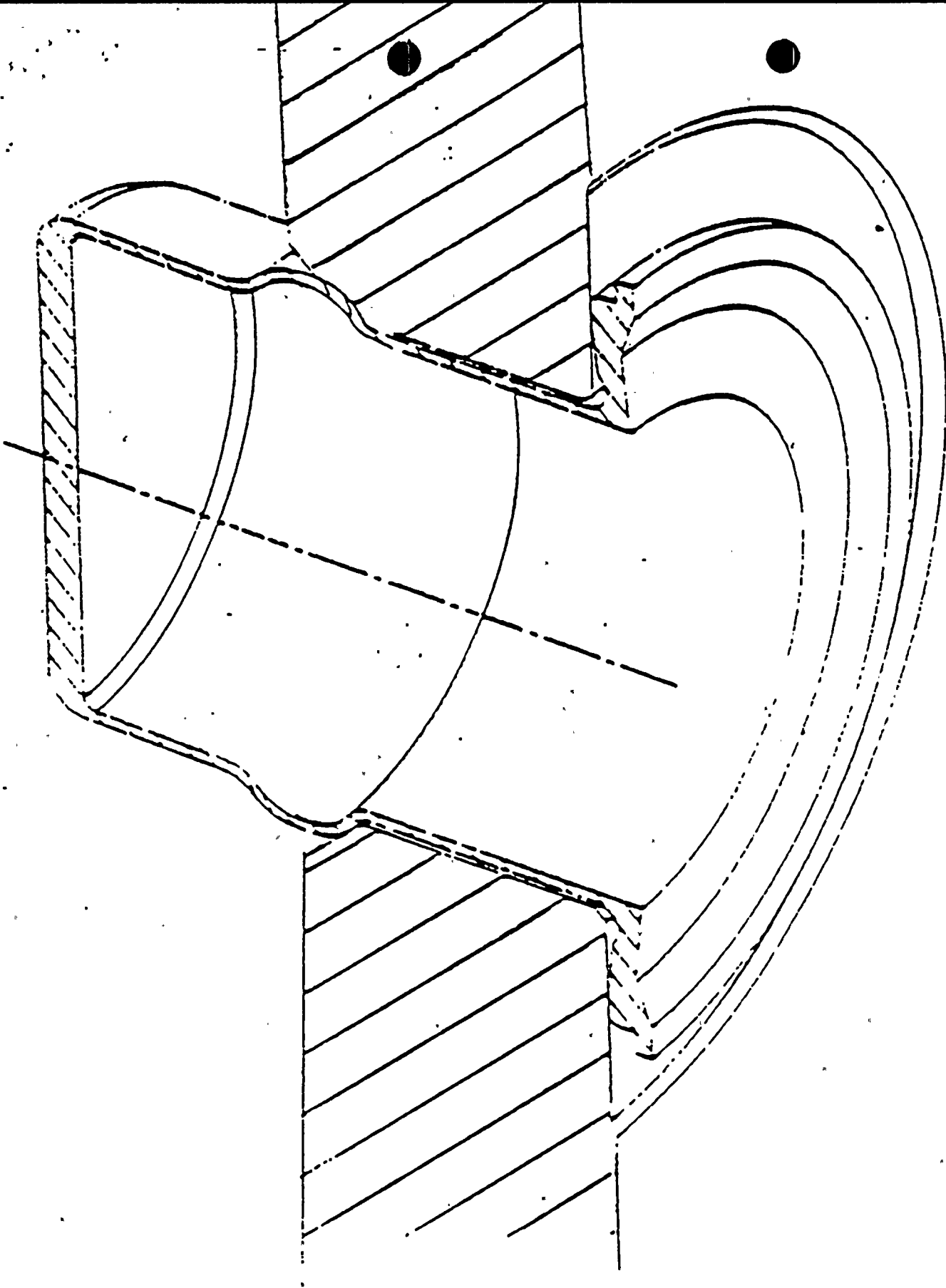
REACTOR VESSEL AND REACTOR INTERNALS

CRACK
ARRESTER
HOLE



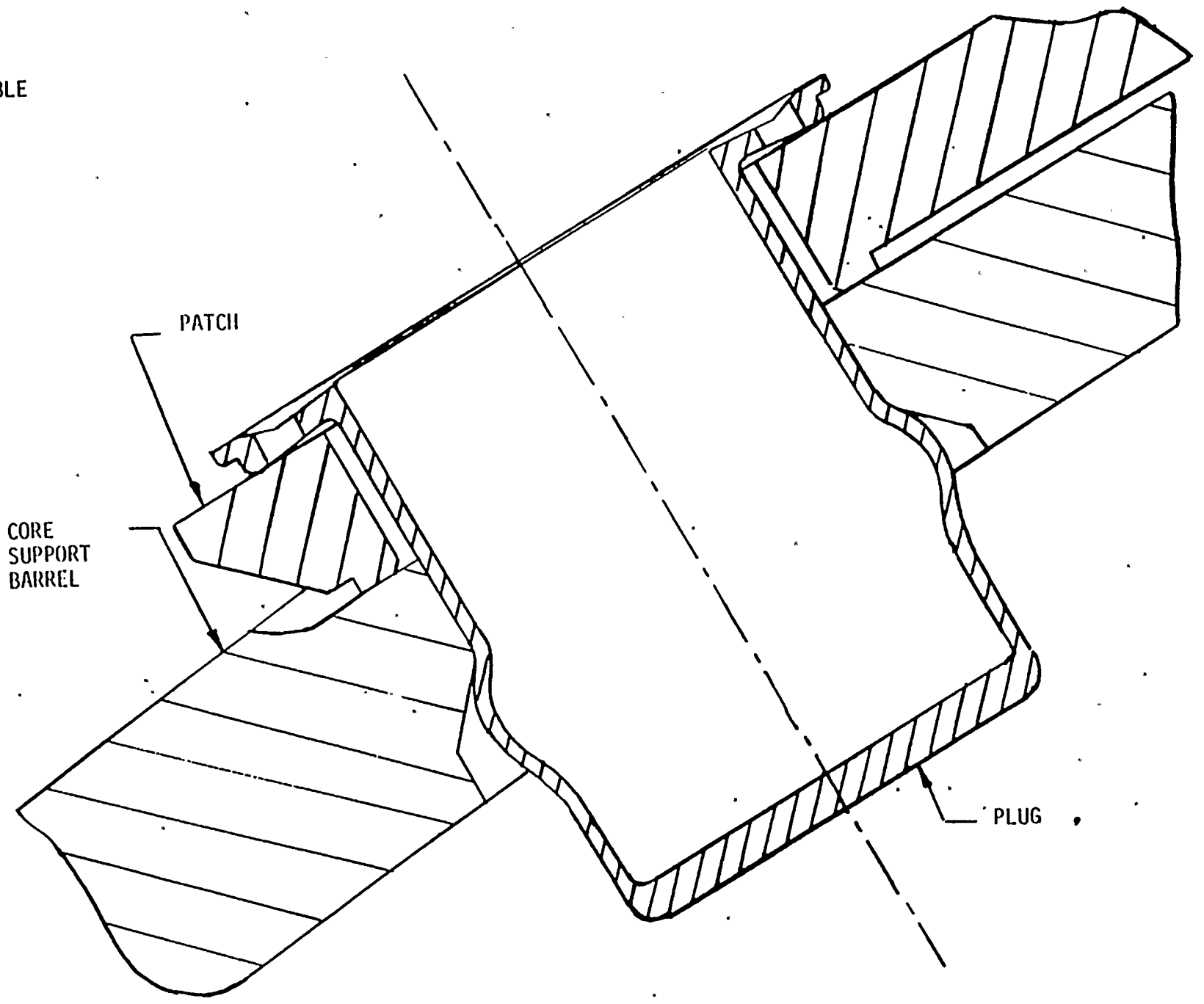
CRACK

CORE SUPPORT BARREL
REPAIR MACHINING



EXPANDABLE PLUG

EXPANDABLE
PATCH
PLUG

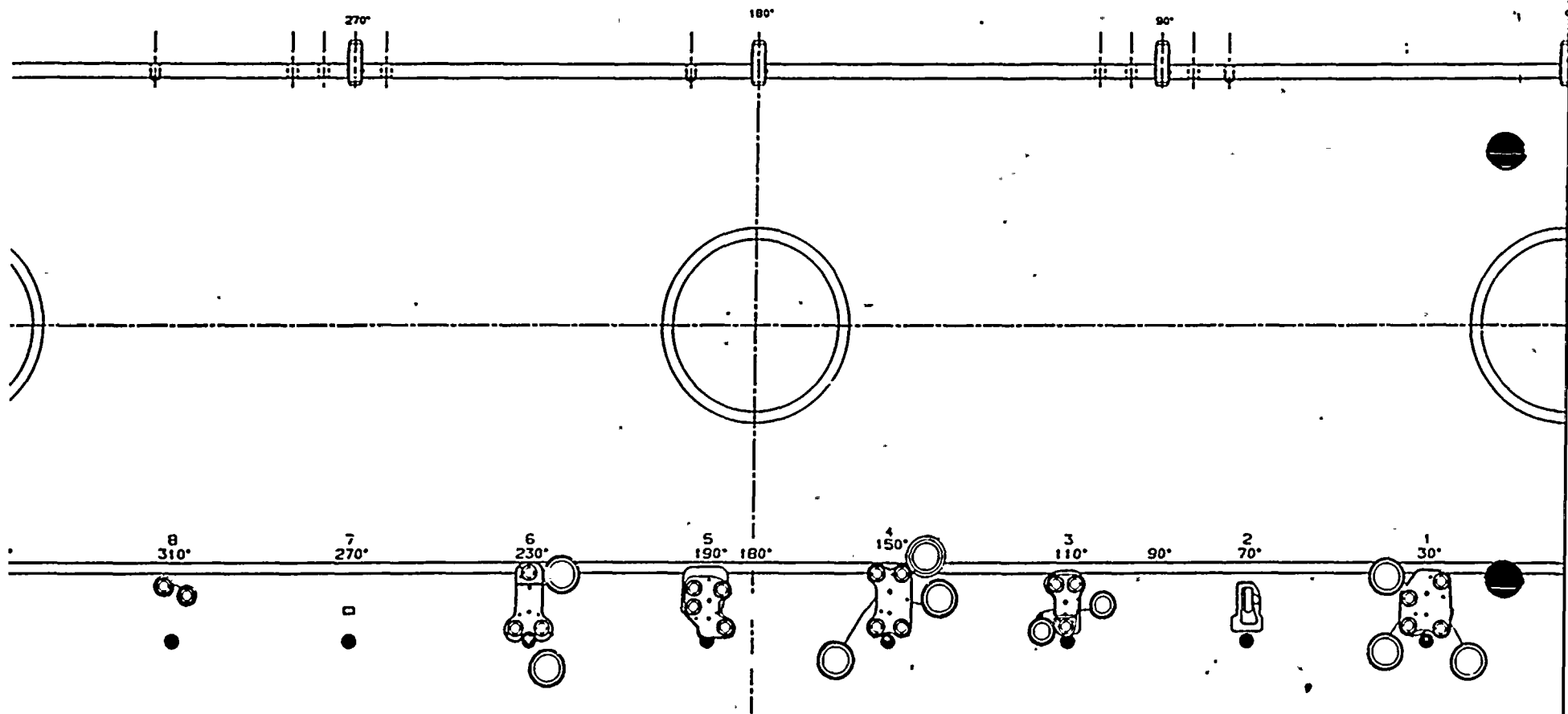


PATCH

CORE
SUPPORT
BARREL

PLUG

CSB REPAIRED CONFIGURATION



INSPECTION PROGRAM

VISUAL INSPECTION

- EXAMINE PLUG & PATCHES
 - EVIDENCE OF MOVEMENT
 - ORIENTATION OF INSTALLATION

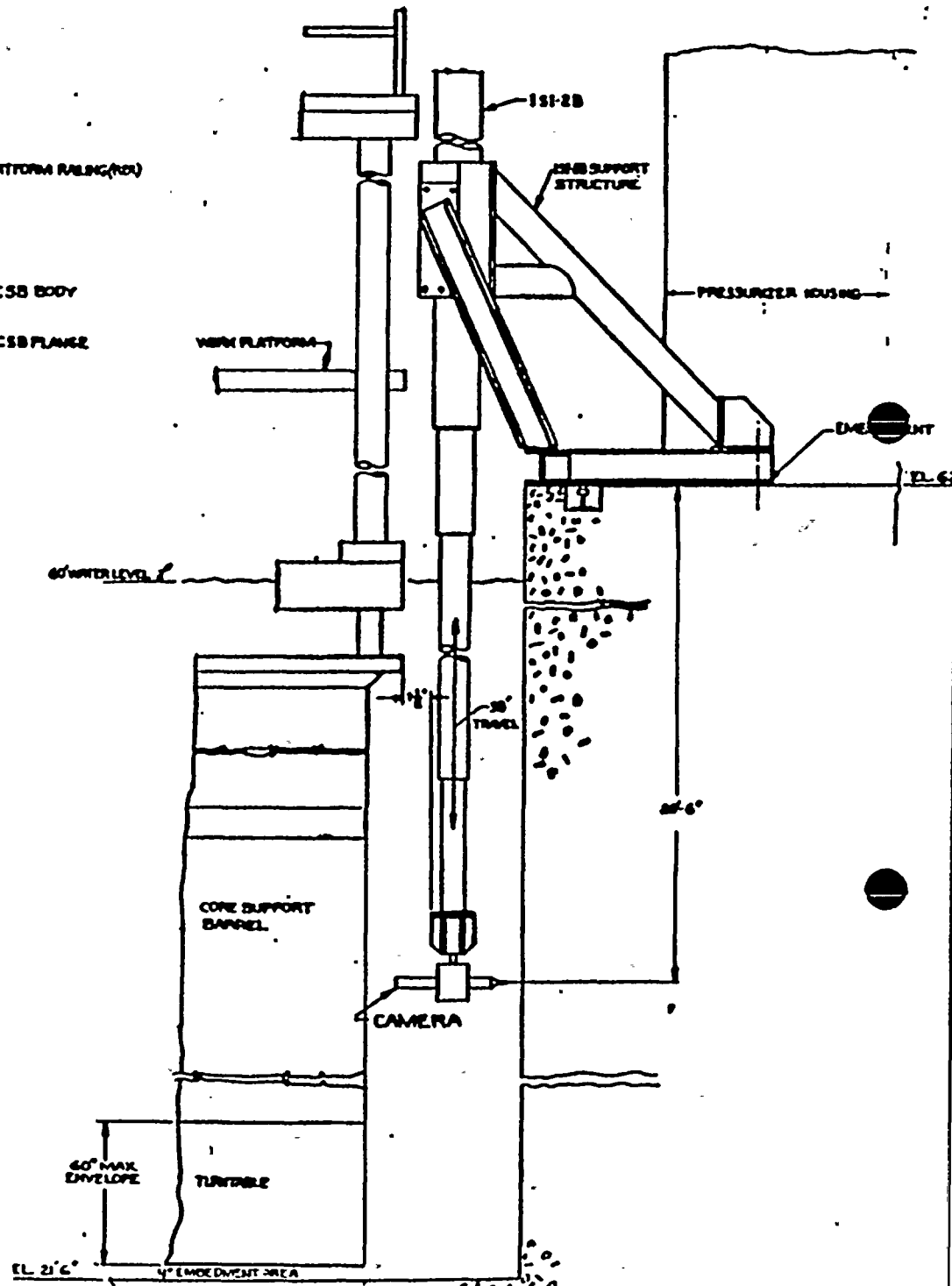
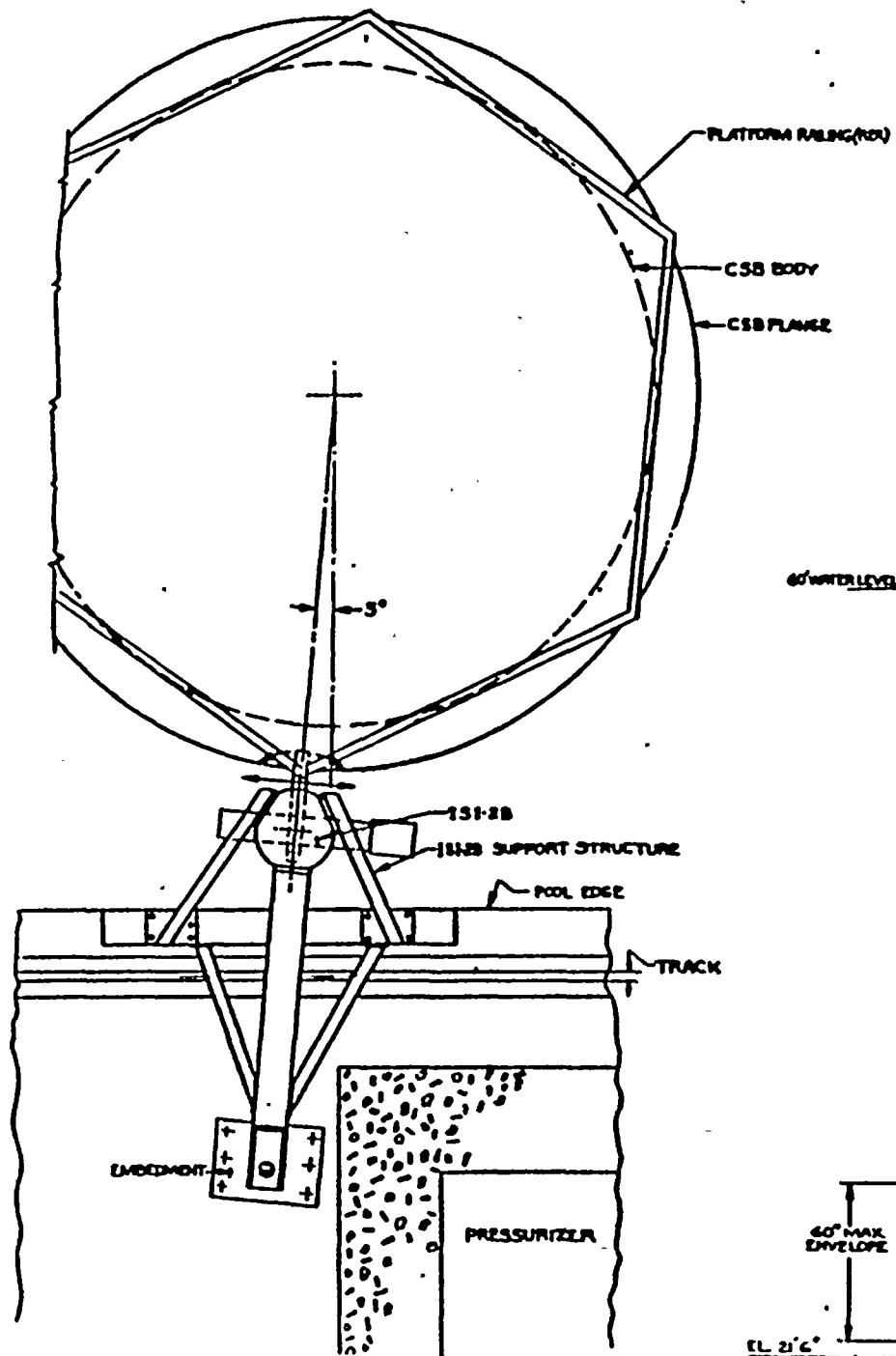
- COMPARE TO BASELINE

- DOCUMENT RESULTS

- EXAMINE ARRESTED CRACKS & ADJACENT BASEMETAL
 - VISUAL EXAMINATION FOR CRACK EXTENSION

- COMPARE TO BASELINE DATA
 - USE BACKUP SUPPLEMENTAL PHOTOS

- DOCUMENT RESULTS



INSPECTION PROGRAM

MECHANICAL INSPECTION

- MEASURE PLUG FLANGE DEFLECTION
- COMPARE TO SCREENING CRITERIA
- DOCUMENT RESULTS

INSPECTION RESULTS

- VISUAL INSPECTION

NO NEW CRACK INDICATIONS WERE NOTED
NO PLUG OR PATCH MOVEMENT OBSERVED
THE CSB CONDITION APPEARS UNCHANGED FROM THE 1984
POST-REPAIR BASELINE INSPECTION

- MECHANICAL INSPECTION

RESIDUAL PLUG FLANGE DEFLECTIONS ALL ABOVE SCREENING
CRITERIA

INSPECTION CONCLUSIONS

- CSB ACCEPTABLE FOR CONTINUED SERVICE
- PLUGS AND PATCHES ACCEPTABLE FOR CONTINUED SERVICE

FUTURE INSPECTIONS

- FUTURE INSPECTIONS AS REQUIRED BY ISI PROGRAM

VISUAL INSPECTION

DOCUMENTATION OF RESULTS

- FINAL INSPECTION REPORT AVAILABLE MARCH '86

Handwritten text at the top left corner.

Handwritten text at the top right corner.

