

REGULATOR INFORMATION DISTRIBUTION SYSTEM (RIDS)

ACCESSION NBR: 8509050049 DOC. DATE: 85/08/26 NOTARIZED: NO DOCKET #
 FACIL: 50-335 St. Lucie Plant, Unit 1, Florida Power & Light Co. 05000335
 50-389 St. Lucie Plant, Unit 2, Florida Power & Light Co. 05000389
 AUTH. NAME AUTHOR AFFILIATION
 WILLIAMS, J.W. Florida Power & Light Co.
 RECIPIENT NAME RECIPIENT AFFILIATION
 BUTCHER, E.J. Operating Reactors Branch 3

SUBJECT: Forwards Tech Spec Figures 6.2-1 & 6.2-2 outlining organizational changes to replace Tech Spec submitted; w/840515 application to amend License DPR-67 & 840521 application to amend License NPF-16.

DISTRIBUTION CODE: A001D COPIES RECEIVED: LTR 1 ENCL 1 SIZE: 5
 TITLE: OR Submittal: General Distribution

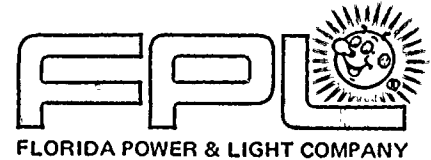
NOTES: 05000335
 OL: 02/01/76 05000389
 OL: 04/06/83

	RECIPIENT ID CODE/NAME		COPIES		RECIPIENT ID CODE/NAME		COPIES	
			LTR	ENCL			LTR	ENCL
	NRR ORB3 BC 01		7	7	NRR ORB3 BC 01		7	7
INTERNAL:	ACRS 09		6	6	ADM/LFMB		1	0
	ELD/HDS2		1	0	NRR/DE/MTEB		1	1
	NRR/DL DIR		1	1	NRR/DL/ORAB		1	0
	NRR/DL/TSRG		1	1	NRR/DSI/METB		1	1
	NRR/DSI/RAB		1	1	<u>REG FILE</u> 04		1	1
	RGN2		1	1				
EXTERNAL:	24X		1	1	EG&G BRUSKE, S		1	1
	LPDR 03		1	1	NRC PDR 02		1	1
	NSIC 05		1	1				

TOTAL NUMBER OF COPIES REQUIRED: LTR 35 ENCL 32

SECRET

SECRET



August 26, 1985
L-85-330

Office of Nuclear Reactor Regulation
Attention: Mr. Edward J. Butcher, Acting Chief
Operating Reactors Branch #3
Division of Licensing
U. S. Nuclear Regulatory Commission
Washington, D. C. 20555

Dear Mr. Butcher:

Re: St. Lucie Unit Nos. 1 & 2
Docket Nos. 50-335 & 50-389
Proposed License Amendment
Organization and Event Reporting

- References:
- (1) FPL letter to NRC, L-84-129, May 15, 1984
 - (2) FPL letter to NRC, L-84-130, May 21, 1984
 - (3) FPL letter to NRC, L-84-154, June 19, 1984
 - (4) NRC letter to FPL dated December 7, 1984
 - (5) FPL letter to NRC, L-84-199, May 23, 1985

References (1) and (2) submitted to NRC applications to amend Facility Operating Licenses DPR-67 for St. Lucie Unit 1 and NPF-16 for St. Lucie Unit 2, to address organizational changes and changes resulting from the new reporting requirements of 10 CFR 50.72 and 50.73, as recommended by NRC Generic Letter 83-43.

Reference (3) identified an additional change that should have been included with References (1) and (2), but was not.

On December 7, 1984, NRC requested additional information and clarification (Reference (4)) in order to complete their review of our applications.

Reference (5) submitted FPL's response to NRC's request of December 7, 1984.

During the time from our original application to present, a number of organizational changes have occurred that would make the organizational changes previously submitted out of date. Therefore, attached are Technical Specification Figures 6.2-1 and 6.2-2 for both St. Lucie Units 1 and 2. We request that these updated figures be included with the forthcoming license amendments.

Very truly yours,

J. W. Williams, Jr.
J. W. Williams, Jr.
Group Vice President
Nuclear Energy

JWW/RJS/cab

8509050049
PDR
850826
ADDOCK
05000335
PDR

Aug 11



1944
1945
1946
1947
1948
1949
1950
1951
1952
1953
1954
1955
1956
1957
1958
1959
1960
1961
1962
1963
1964
1965
1966
1967
1968
1969
1970
1971
1972
1973
1974
1975
1976
1977
1978
1979
1980
1981
1982
1983
1984
1985
1986
1987
1988
1989
1990
1991
1992
1993
1994
1995
1996
1997
1998
1999
2000
2001
2002
2003
2004
2005
2006
2007
2008
2009
2010
2011
2012
2013
2014
2015
2016
2017
2018
2019
2020
2021
2022
2023
2024
2025
2026
2027
2028
2029
2030
2031
2032
2033
2034
2035
2036
2037
2038
2039
2040
2041
2042
2043
2044
2045
2046
2047
2048
2049
2050
2051
2052
2053
2054
2055
2056
2057
2058
2059
2060
2061
2062
2063
2064
2065
2066
2067
2068
2069
2070
2071
2072
2073
2074
2075
2076
2077
2078
2079
2080
2081
2082
2083
2084
2085
2086
2087
2088
2089
2090
2091
2092
2093
2094
2095
2096
2097
2098
2099
2100



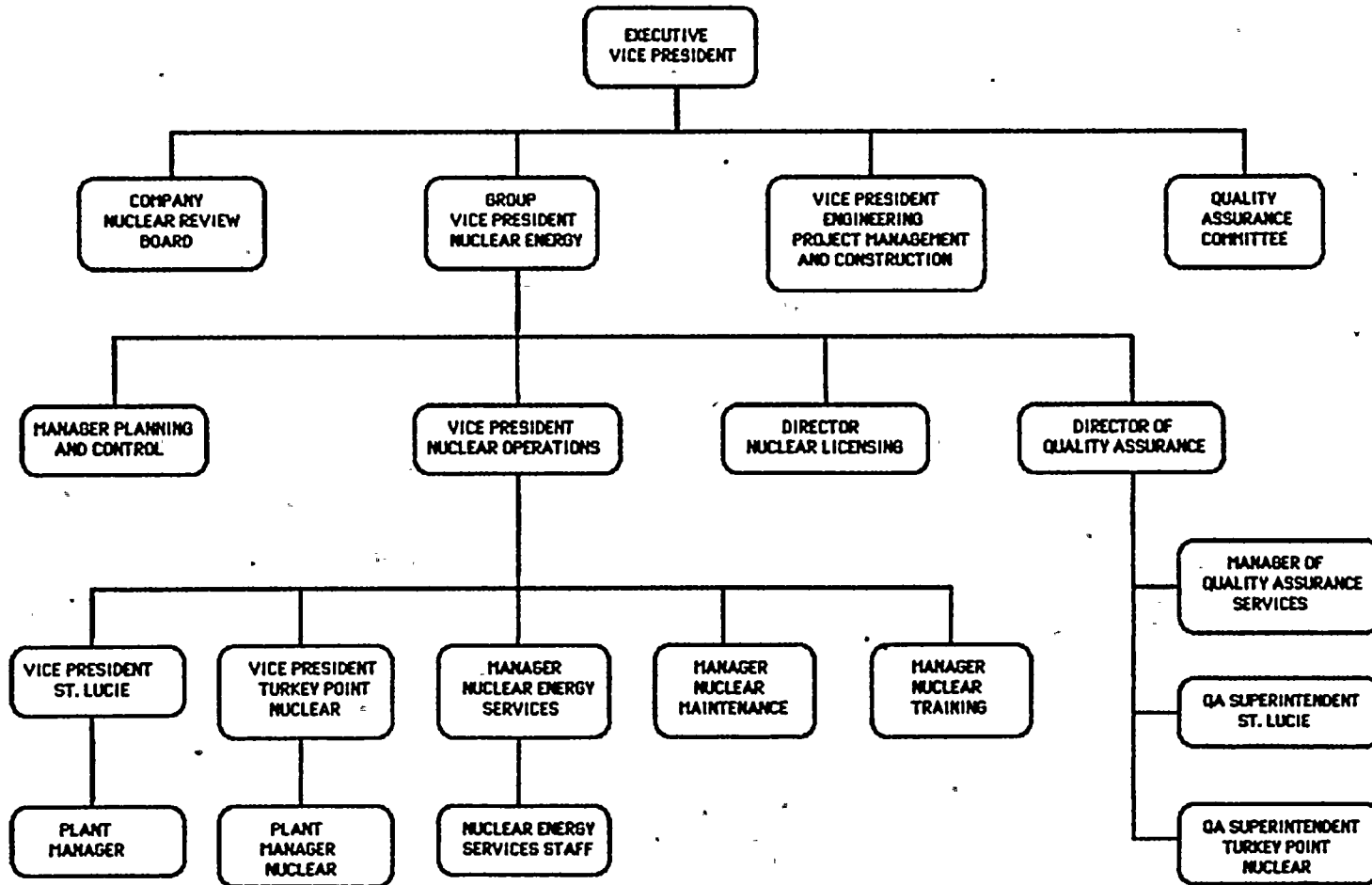


FIGURE 6.2-1
OFF-SITE ORGANIZATION FOR FACILITY
MANAGEMENT AND TECHNICAL SUPPORT



Handwritten marks and characters in the top right corner, possibly including the number '2'.

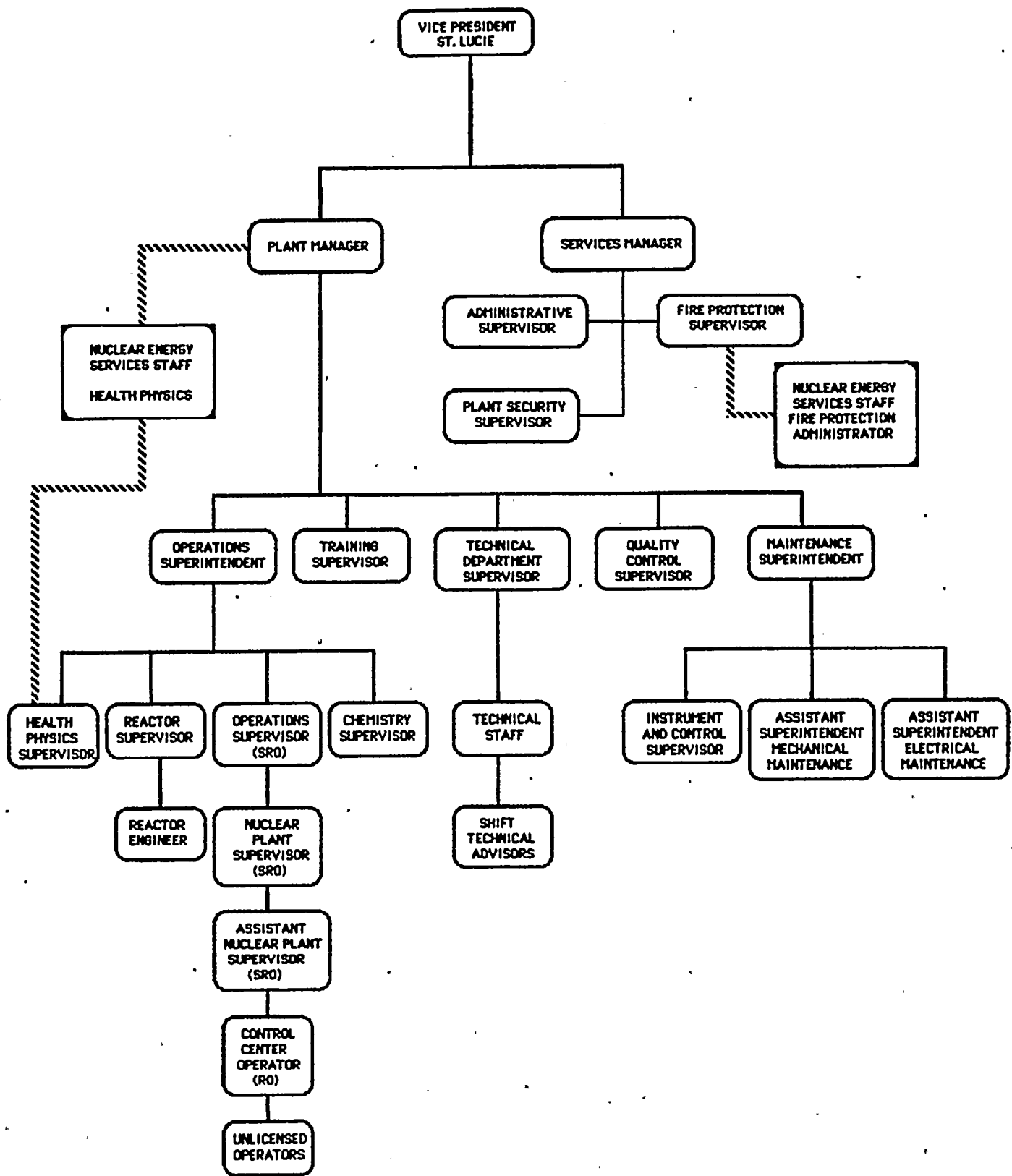


FIGURE 6.2-2
UNIT ORGANIZATION
ST. LUCIE PLANT, UNITS 1 AND 2

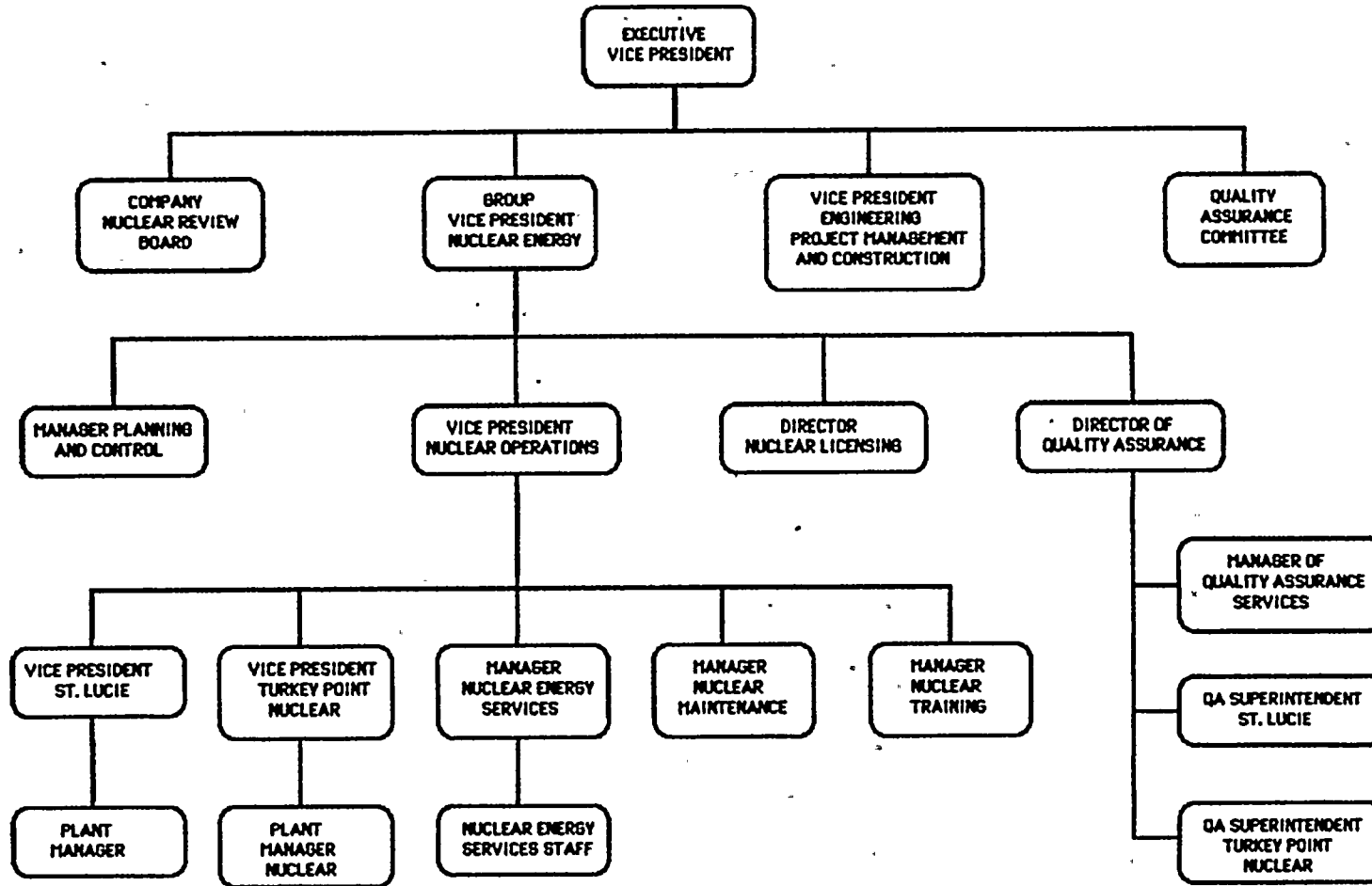
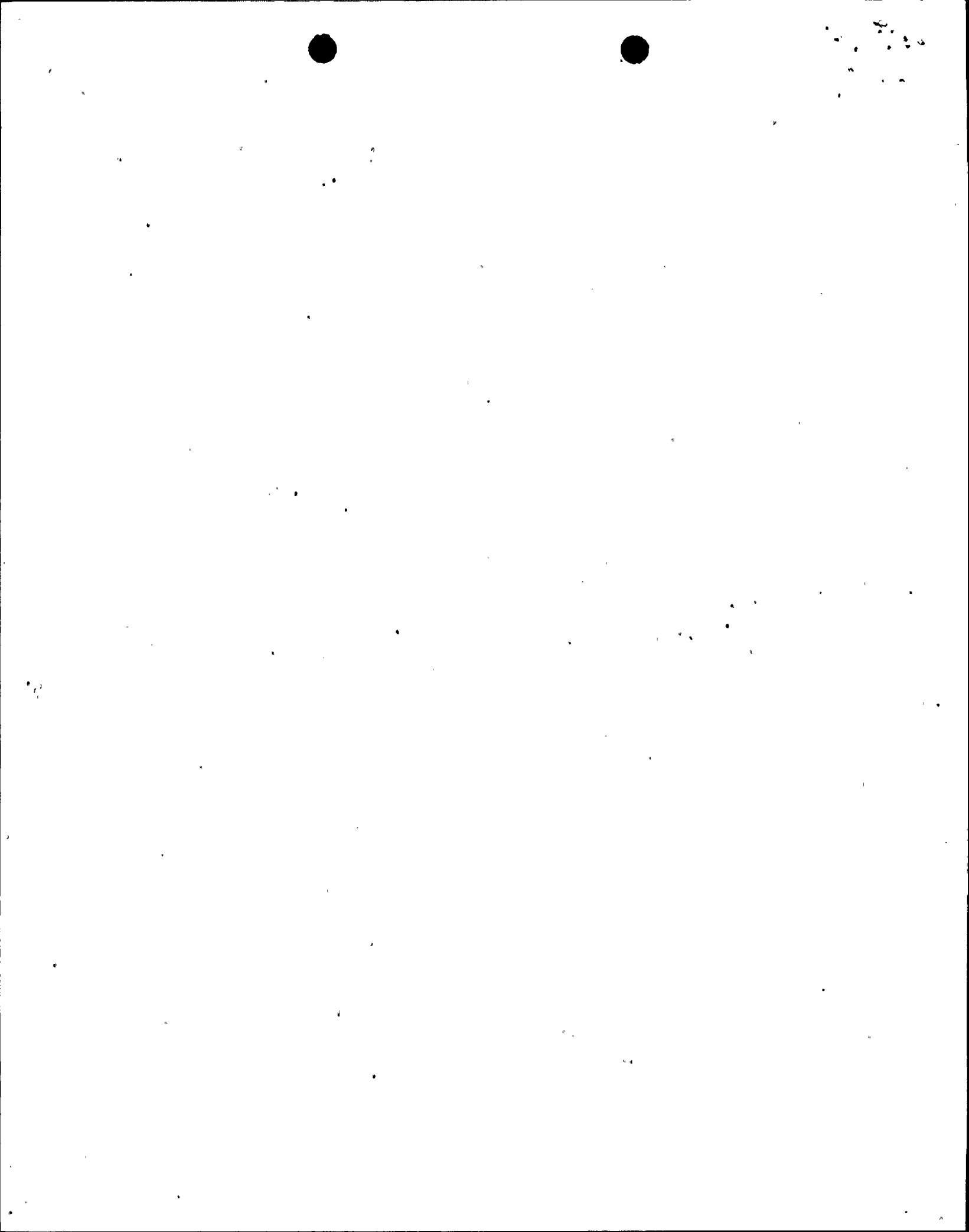


FIGURE 6.2-1
OFF-SITE ORGANIZATION FOR FACILITY
MANAGEMENT AND TECHNICAL SUPPORT



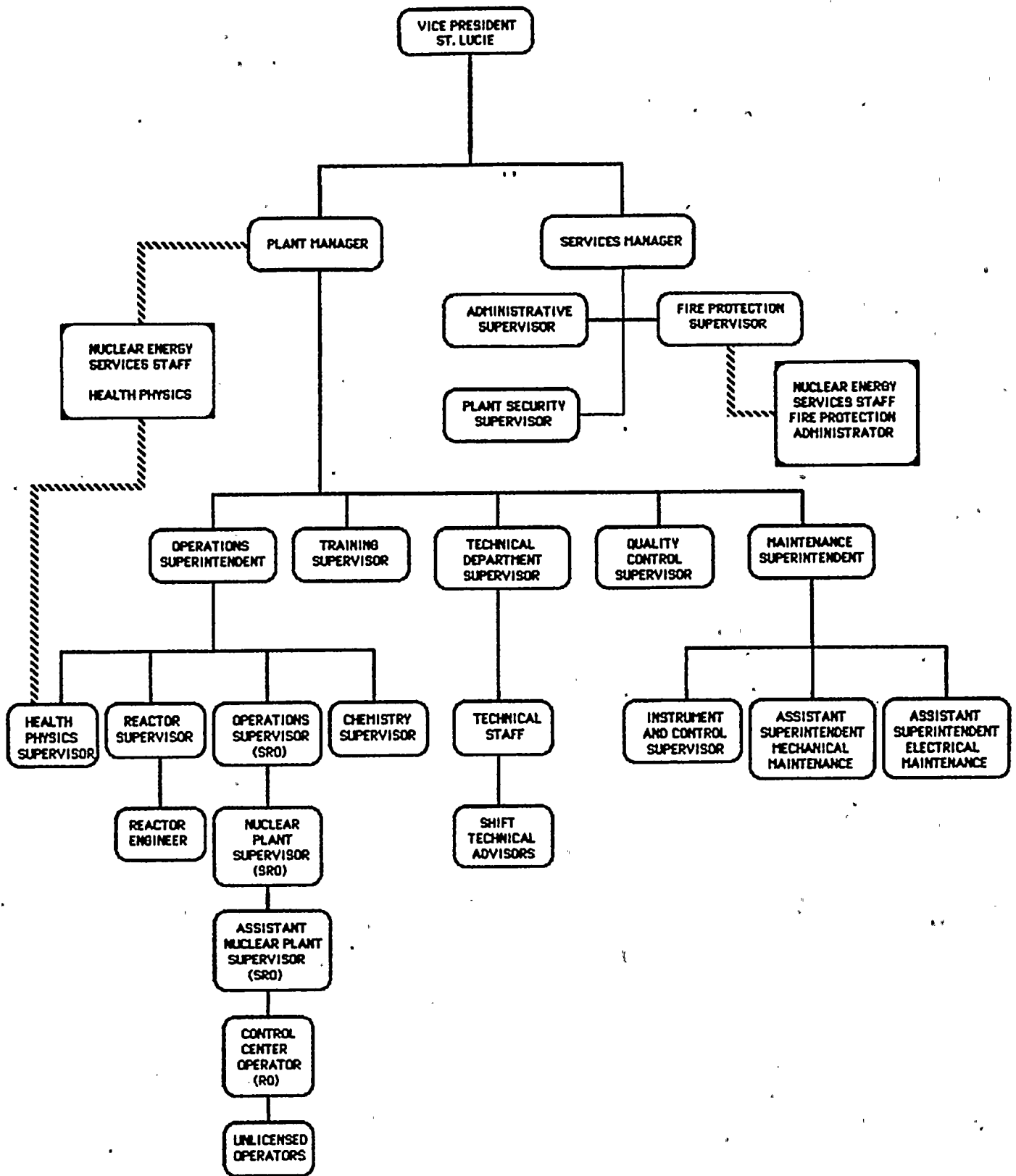


FIGURE 6.2-2
UNIT ORGANIZATION
ST. LUCIE PLANT, UNITS 1 AND 2