

REGULATORY INFORMATION DISTRIBUTION SYSTEM (RIDS)

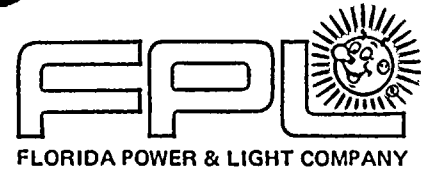
ACCESSION NBR: 8409050385 DOC. DATE: 84/08/31 NOTARIZED: NO DOCKET #
 FACIL: 50-335 St. Lucie Plant, Unjt 1, Florida Power & Light Co. 05000335
 50-389 St. Lucie Plant, Unit 2, Florida Power & Light Co. 05000389
 AUTH. NAME AUTHOR AFFILIATION
 WILLIAMS, J.W. Florida Power & Light Co.
 RECIP. NAME RECIPIENT AFFILIATION
 EISENHUT, D.G. Office of Nuclear Reactor Regulation, Director

SUBJECT: Requests schedular extensions for responding to three items
 in NRC 840702 ltr re improving & maintaining diesel
 generator reliability. Responses to Items 1 & 3 will be
 provided by 850131 & Item 2 in 90 days, per Generic Ltr 84-15.

DISTRIBUTION CODE: A001D COPIES RECEIVED: LTR 1 ENCL 1 SIZE: 2
 TITLE: OR Submittal: General Distribution

NOTES: 05000335
 OL: 02/01/76 05000389
 OL: 04/06/83

	RECIPIENT ID CODE/NAME	COPIES LTTR ENCL	RECIPIENT ID CODE/NAME	COPIES LTTR ENCL
	NRR ORB3 BC 01	7 7	NRR ORB3 BC 01	7 7
INTERNAL:	ADM/LFMB	1 0	ELD/HDS2	1 0
	NRR/DE/MTEB	1 1	NRR/DL DIR	1 1
	NRR/DL/ORAB	1 0	NRR/DSI/METB	1 1
	NRR/DSI/RAB	1 1	<u>REG FILE</u> 04	1 1
	RGN2	1 1		
EXTERNAL:	ACRS 09	6 6	LPDR 03	1 1
	NRC PDR 02	1 1	NSIC 05	1 1
	NTIS	1 1		



August 31, 1984
L-84-223

Office of Nuclear Reactor Regulation
Attention: Mr. Darrell G. Eisenhut, Director
Division of Licensing
U. S. Nuclear Regulatory Commission
Washington, D. C. 20555

Dear Mr. Eisenhut:

Re: St. Lucie Units 1 and 2
Docket Nos. 50-335, 50-389
Generic Letter 84-15

By letter dated July 2, 1984, the NRC requested that Florida Power & Light Company provide responses to three items concerning improving and maintaining diesel generator reliability. FPL requests schedular extensions for those items requiring proposed technical specification changes, specifically items 1 and 3. FPL will provide responses to items 1 and 3 by January 31, 1985. FPL will provide responses to item 2, diesel generator reliability data no later than the ninety days requested by Generic Letter 84-15.

The bases for FPL's schedular extension request is outlined on the attachment to this letter.

Very truly yours,

J. W. Williams, Jr.
Group Vice President
Nuclear Energy

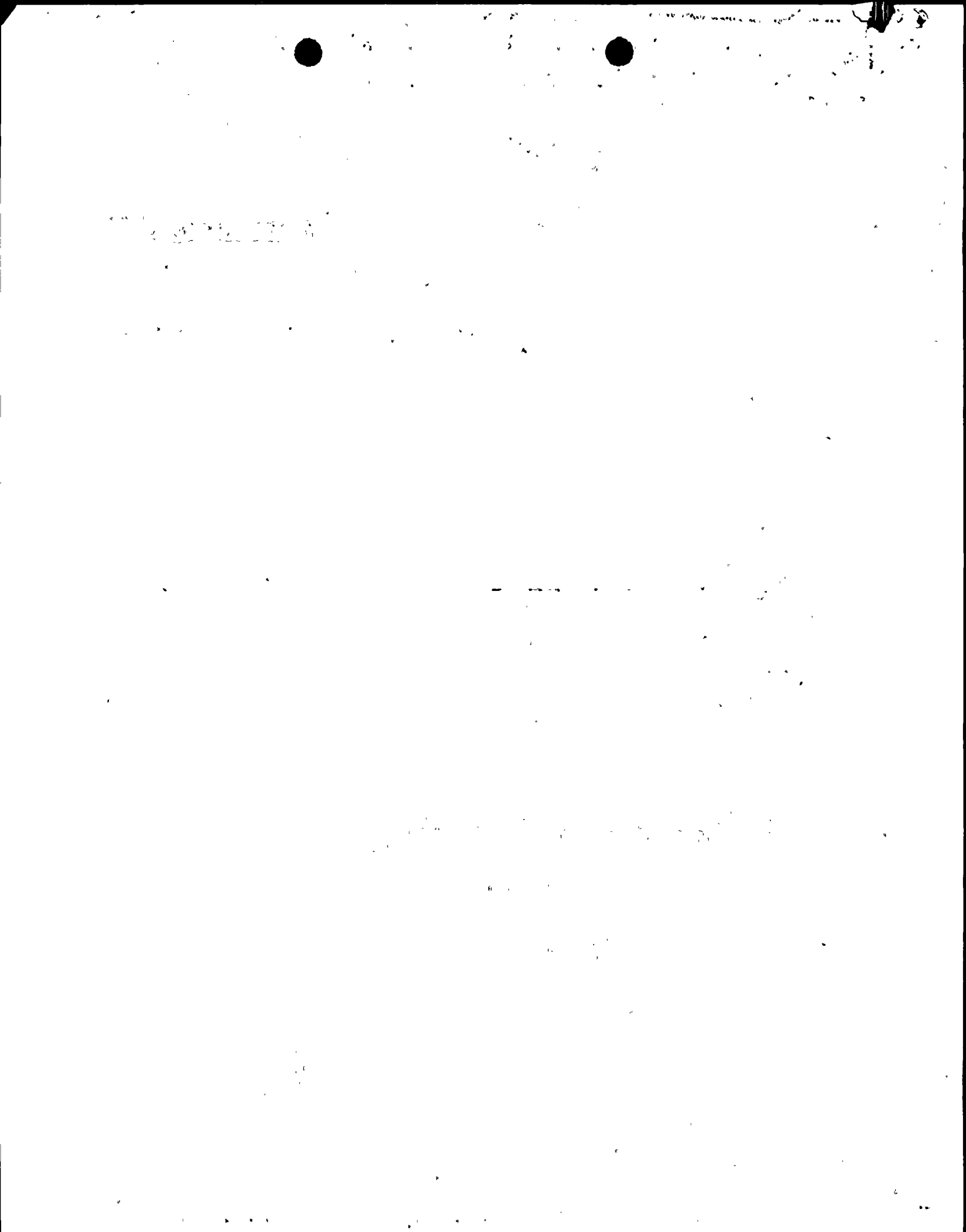
JWW/PLP/js

Attachment

cc: J. P. O'Reilly, Region II
Harold F. Reis, Esquire
PNS-LI-84-309

Acc'

8409050385 840831
PDR ADOCK 05000335
PDR



ATTACHMENT

Re: St. Lucie Units 1 and 2
Docket Nos. 50-335, 50-389
Generic Letter 84-15

1. Plant technical staff and engineering manpower is currently scheduled to the maximum extent possible to support the Oct/Nov St. Lucie 2 first refueling outage. This particular outage involves implementing many major "conditions of license" items which have been previously made to NRR.
2. Currently, St. Lucie 1 and 2 diesel generator technical specifications have some significant differences which FPL wishes to address and make common. Review and resolution of these differences may require a more thorough review of the subject matter than outlined in Generic Letter 84-15.

