

REGULATORY INFORMATION DISTRIBUTION SYSTEM (RIDS)

ACCESSION NBR: 8306140572 DOC. DATE: 83/06/07 NOTARIZED: NO DOCKET #
 FACIL: 50-335 St. Lucie Plant, Unit 1, Florida Power & Light Co. 05000335
 50-389 St. Lucie Plant, Unit 2, Florida Power & Light Co. 05000389
 AUTH. NAME: URRIG, R.E. AUTHOR AFFILIATION: Florida Power & Light Co.
 RECIP. NAME: EISENHUT, D.G. RECIPIENT AFFILIATION: Division of Licensing

SUBJECT: Forwards revised shift staffing chart based on 830606 notification that seven license candidates received reactor operator licenses.

DISTRIBUTION CODE: B021S COPIES RECEIVED: LTR 1 ENCL 1 SIZE: 2
 TITLE: OR/Licensing Submittal: Combined General Distribution

NOTES:

	RECIPIENT ID CODE/NAME	COPIES		RECIPIENT ID CODE/NAME	COPIES	
		LTR	ENCL		LTR	ENCL
	NRR ORB3 BC 05	1	1	LIC BR #3 BC 05	1	1
	KREUTZER, P.	1	0	LIC BR #3 LA	1	0
	SELLS, D 01	1	1	NERSES, V. 01	1	1
INTERNAL:	ELD/HDS2	1	0	IE/DEPER/EPB	3	3
	IE/DEPER/IRB	1	1	NRR/DE/CEB 09	1	1
	NRR/DE/MTEB	1	1	NRR/DHFS DEPY12	1	1
	NRR/DHFS/HFEB16	1	1	NRR/DHFS/LQB	1	1
	NRR/DL DIR	1	0	NRR/DL/ORAB	1	0
	NRR/DL/SSPB	1	0	NRR/DSI/ADRS	1	0
	NRR/DSI/AEB 28	1	1	NRR/DSI/CPB 11	1	1
	NRR/DSI/CSB 10	1	1	NRR/DSI/ICSB 18	1	1
	NRR/DSI/METB 13	1	1	NRR/DSI/PSB 21	1	1
	NRR/DSI/RSB 25	1	1	<u>REG FILE</u> 04	1	1
	RG2	1	1	RM/DDAMI/MIB	1	0
EXTERNAL:	ACRS 29	8	8	LPDR 03	1	1
	NRC PDR 02	1	1	NSIC 06	1	1
	NTIS	1	1			

TOTAL NUMBER OF COPIES REQUIRED: LTR 42 ENCL 34

1917

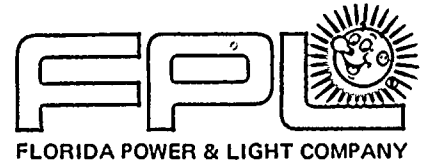
THE UNIVERSITY OF CHICAGO
OFFICE OF THE DEAN
540 EAST SOUTH EAST STREET
CHICAGO, ILLINOIS

THE UNIVERSITY OF CHICAGO
OFFICE OF THE DEAN
540 EAST SOUTH EAST STREET
CHICAGO, ILLINOIS

THE UNIVERSITY OF CHICAGO
OFFICE OF THE DEAN
540 EAST SOUTH EAST STREET
CHICAGO, ILLINOIS

1917

NAME	RESIDENCE	DATE	REMARKS
ALLEN, J. H.	1234 N. LAUREL ST.	1917	...
BROWN, W. M.	567 E. DIVISION ST.	1917	...
CHAMBERLAIN, R. L.	890 W. MADISON ST.	1917	...
CLARK, H. J.	1122 N. LAUREL ST.	1917	...
COOPER, T. A.	345 E. DIVISION ST.	1917	...
DAVIS, G. E.	678 W. MADISON ST.	1917	...
EDWARDS, F. B.	901 N. LAUREL ST.	1917	...
FERGUSON, J. C.	234 E. DIVISION ST.	1917	...
GILBERT, L. D.	567 W. MADISON ST.	1917	...
HARRIS, M. N.	890 N. LAUREL ST.	1917	...
HENDERSON, P. Q.	1122 E. DIVISION ST.	1917	...
HUGHES, R. S.	345 W. MADISON ST.	1917	...
JACKSON, T. U.	678 N. LAUREL ST.	1917	...
KELLY, V. W.	901 E. DIVISION ST.	1917	...
LEWIS, X. Y.	234 W. MADISON ST.	1917	...
MAHONEY, Z. A.	567 N. LAUREL ST.	1917	...
MCCOY, B. C.	890 E. DIVISION ST.	1917	...
MURPHY, D. E.	1122 W. MADISON ST.	1917	...
NICHOLS, F. G.	345 N. LAUREL ST.	1917	...
OLSON, H. I.	678 E. DIVISION ST.	1917	...
PETERSON, J. K.	901 W. MADISON ST.	1917	...
ROBERTSON, L. M.	234 N. LAUREL ST.	1917	...
SCOTT, N. O.	567 E. DIVISION ST.	1917	...
SMITH, P. R.	890 W. MADISON ST.	1917	...
STEWART, Q. S.	1122 N. LAUREL ST.	1917	...
TAYLOR, R. T.	345 E. DIVISION ST.	1917	...
WALKER, U. V.	678 W. MADISON ST.	1917	...
WATSON, W. X.	901 N. LAUREL ST.	1917	...
WELLS, Y. Z.	234 E. DIVISION ST.	1917	...
WHITE, A. B.	567 W. MADISON ST.	1917	...
WILSON, C. D.	890 N. LAUREL ST.	1917	...
WOOD, E. F.	1122 E. DIVISION ST.	1917	...
YOUNG, G. H.	345 W. MADISON ST.	1917	...
ZIMMERMAN, I. J.	678 N. LAUREL ST.	1917	...



June 7, 1983
L-83-350

Office of Nuclear Reactor Regulation
Attention: Mr. Darrell G. Eisenhut, Director
Division of Licensing
U. S. Nuclear Regulatory Commission
Washington, D.C. 20555

Dear Mr. Eisenhut:

Re: St. Lucie Unit Nos. 1 & 2
Docket Nos. 50-335 & 50-389
Shift Staffing

Florida Power & Light Company's letter L-83-342, dated June 3, 1983, provided the intended staffing of St. Lucie Units 1 & 2, contingent on at least six license-candidates receiving licenses following the April 1983 examination. On June 6, 1983, we received notification that seven of the license candidates received their licenses. As a result, we will be staffing St. Lucie Units 1 & 2 as shown on the attached Figure.

Very truly yours,

Robert E. Uhrig
Vice President
Advanced Systems & Technology

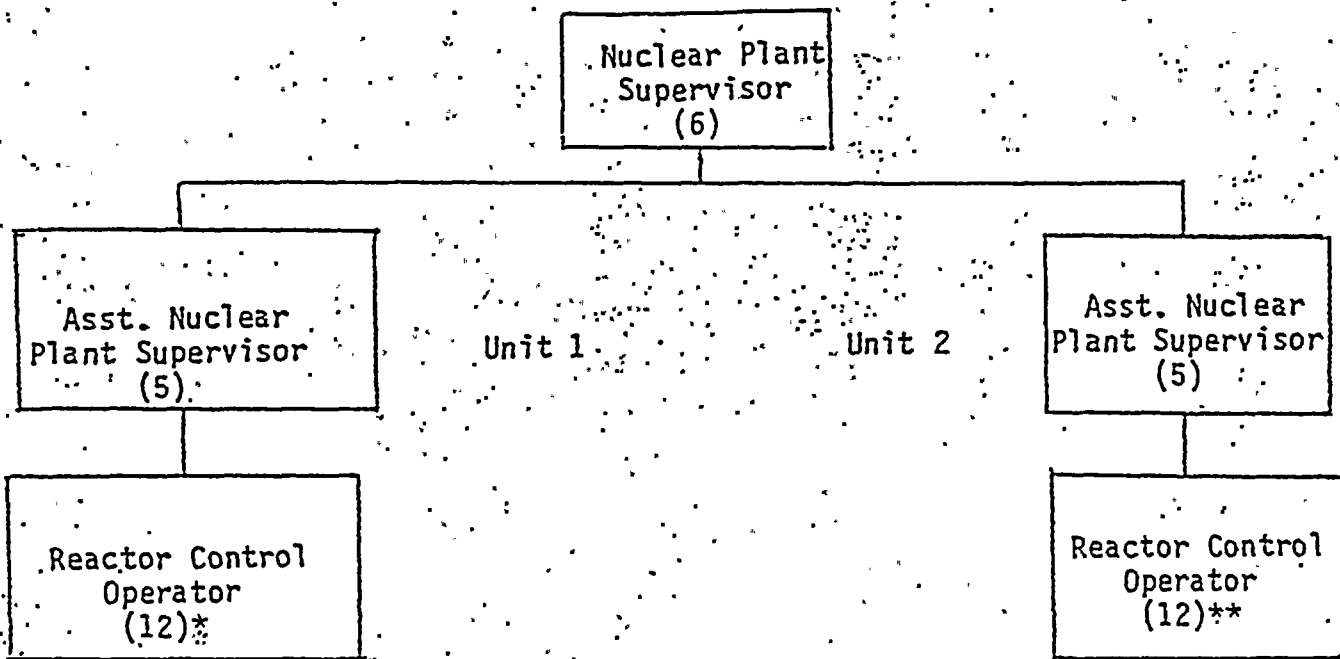
REU/RJS/cab

Attachment

Box 1
11

8306140572 830607
PDR-ADOCK-05000335
PDR

SHIFT STAFFING #



The staffing indicated represents the current staffing and exceeds the staffing required for five shifts. However, in no case will less than five shifts be available.

* one of 12 has an SRO

** four of 12 have an SRO

Note: After receipt of results of August, 1983, examination results, we expect to have eight additional RO's and one SRO who qualifies as an ANPS.