

REGULATORY INFORMATION DISTRIBUTION SYSTEM (RIDS)

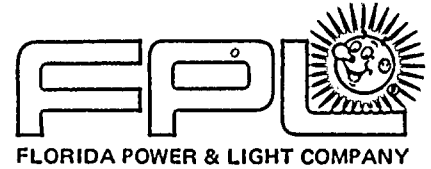
ACCESSION NBR: 8303250010 DOC. DATE: 83/03/22 NOTARIZED: NO DOCKET #
 FACIL: 50-389 St, Lucie Plant, Unit 2, Florida Power & Light Co. 05000389
 AUTH. NAME AUTHOR AFFILIATION
 UHRIG, R. E. Florida Power & Light Co.
 RECIP. NAME RECIPIENT AFFILIATION
 EISENHUT, D. G. Division of Licensing

SUBJECT: Forwards present schedule to install TSI matl flame impingement shields on lower most cable trays in containment cable tray racks.

DISTRIBUTION CODE: B002S COPIES RECEIVED: LTR 1 ENCL 1 SIZE: 3
 TITLE: Licensing Submittal: Fire Protection

NOTES:

	RECIPIENT		COPIES			RECIPIENT		COPIES	
	ID CODE/NAME	LIC BR #3 BC	LTR	ENCL		ID CODE/NAME		LTR	ENCL
			1	1		NERSES, V.	01	1	1
INTERNAL:	ELD/HDS2		1	0		IE FILE	07	1	1
	NRR/DE/CEB	06	2	2		NRR/DSI/ASB		1	1
	<u>REG FILE</u>	04	1	1		RGN2		1	1
EXTERNAL:	ACRS	10	6	6		LPDR	03	1	1
	NRC PDR	02	1	1		NSIC	05	1	1
	NTIS		1	1					



March 22, 1983
L-83-169

Office of Nuclear Reactor Regulations
Attention: Mr. Darrell G. Eisenhut, Director
Division of Licensing
U. S. Nuclear Regulatory Commission
Washington, D.C. 20555

Dear Mr. Eisenhut:

Re: ST. LUCIE UNIT NO. 2
DOCKET NO. 50-389
FIRE PROTECTION

In recent conversations between FP&L and the NRC, your staff had some concerns regarding the scheduled implementation of the proposed TSI material flame impingement shields to be installed on the lower most cable trays in the containment cable tray racks. Attached is FP&L's present schedule to install the TSI shields.

Should you have any questions regarding the attached, please contact us accordingly.

Very truly yours,

Robert E. Uhrig
Vice President
Advanced Systems and Technology

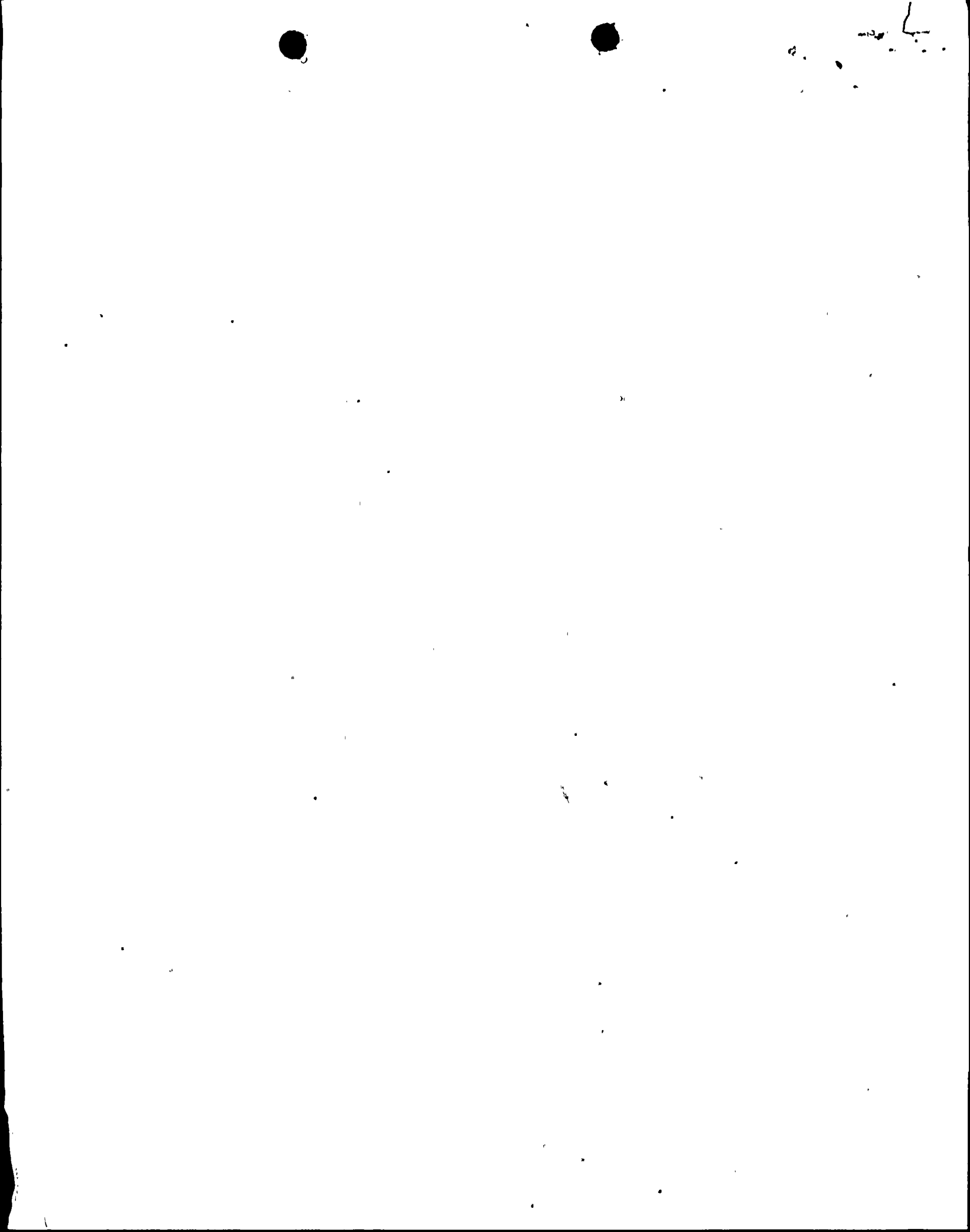
REU/RJS/PPC/rms

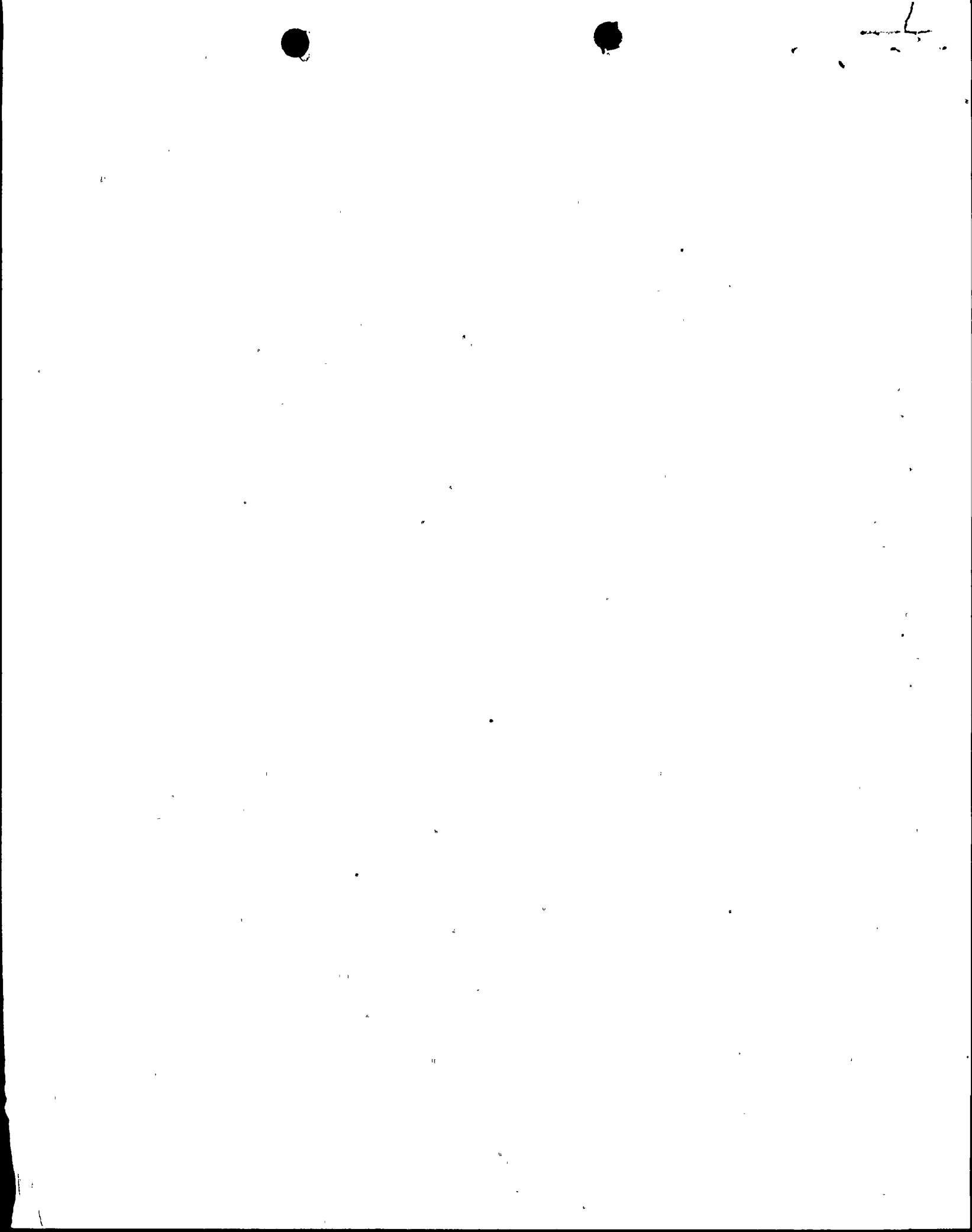
Attachment

cc: J. P. O'Reilly, Region II
Harold F. Reis, Esquire

Boo2

8303250010 830322
PDR ADOCK 05000389
F PDR

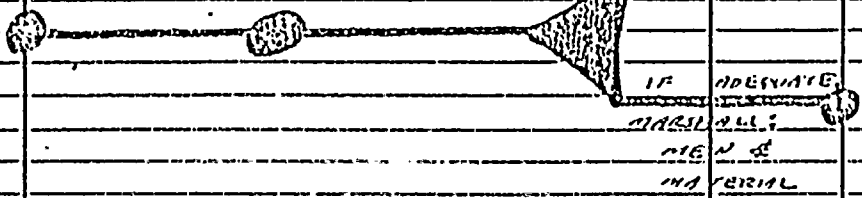




DURING OUTAGE

SI 2038
12/1/54

ESTIMATE DETERMINING IF
DURATION ENOUGH TIME IF INSUFFICIENT,
OF EXITS QUANTIFY AREA OUTAGE



OUTAGE START

ERECT SCAFFOLD
MOVE MATERIAL INTO RCB

ERECT DUST ENCLOSURE

STEEL ERECTION
START COMPLETE

TSI MATERIAL
START COMPLETE

FROM PREVIOUS PAGE

CLEAN UP
EXIT
RCB

OUTAGE END

TSI

TSI MATERIAL SCHEDULE

