

8802230363

ST. LUCIE - UNIT 1

8/11/82

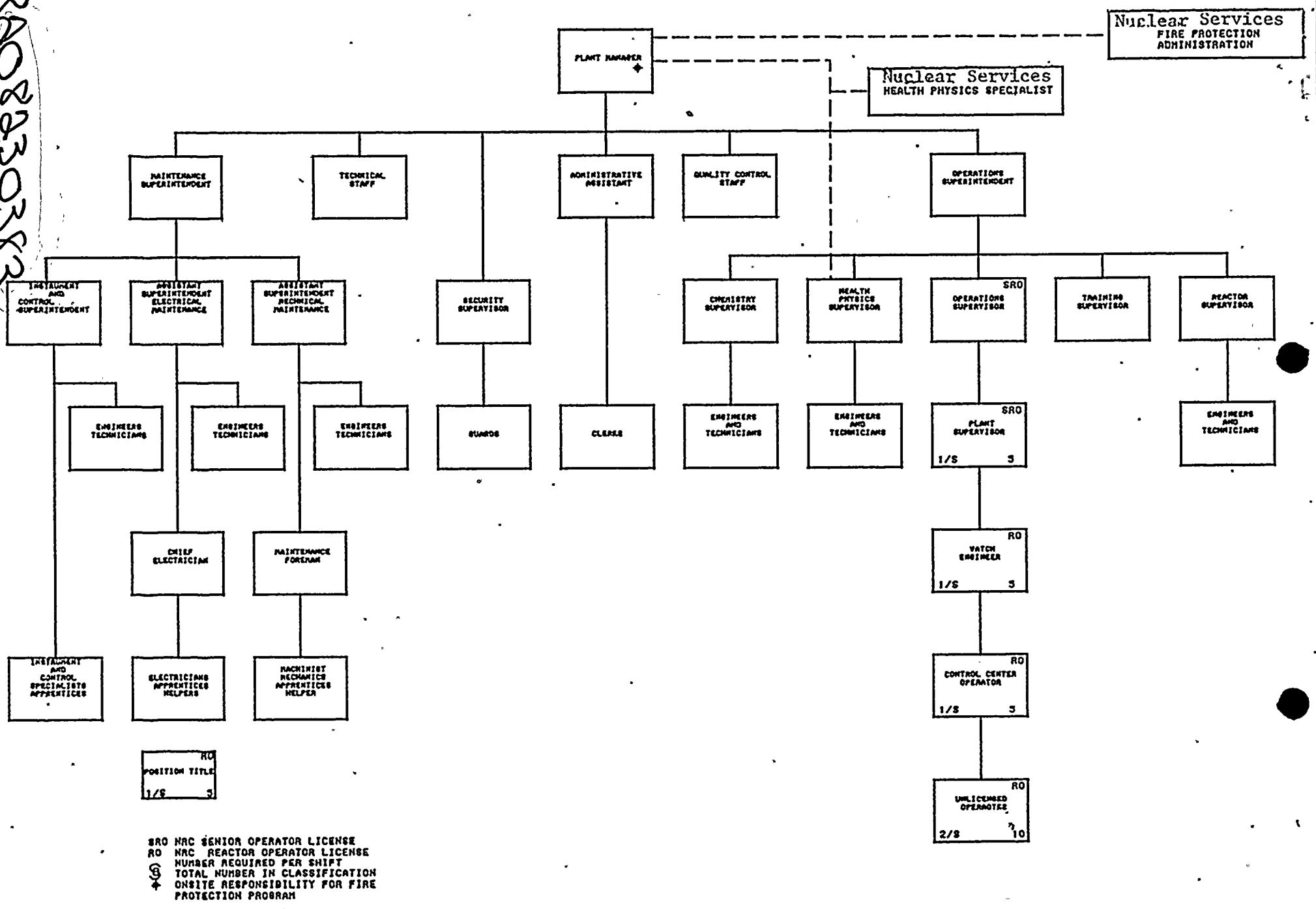


FIGURE 6.2-2 FACILITY ORGANIZATION-ST. LUCIE PLANT, UNIT 1

GA-2-870S1R0

COMPOSITION

6.5.2.2 The CNRB shall be composed of the:

Member: Vice President, Advanced Systems and Technology

Member: Chief Engineer, Power Plant Engineering

Member: Vice President, Nuclear Energy

Member: Manager, Nuclear Energy

Member: Director of Nuclear Affairs

Member: Manager, Nuclear Fuel

Member: Power Plant Engineering Principal Engineer

Member: Power Plant Engineering Senior Project Manager

The CNRB Chairman shall be designated in writing.

ALTERNATES

6.5.2.3 All alternate members shall be appointed in writing by the CNRB Chairman to serve on a temporary basis however, no more than two alternates shall participate as voting members in CNRB activities at any one time.

CONSULTANTS

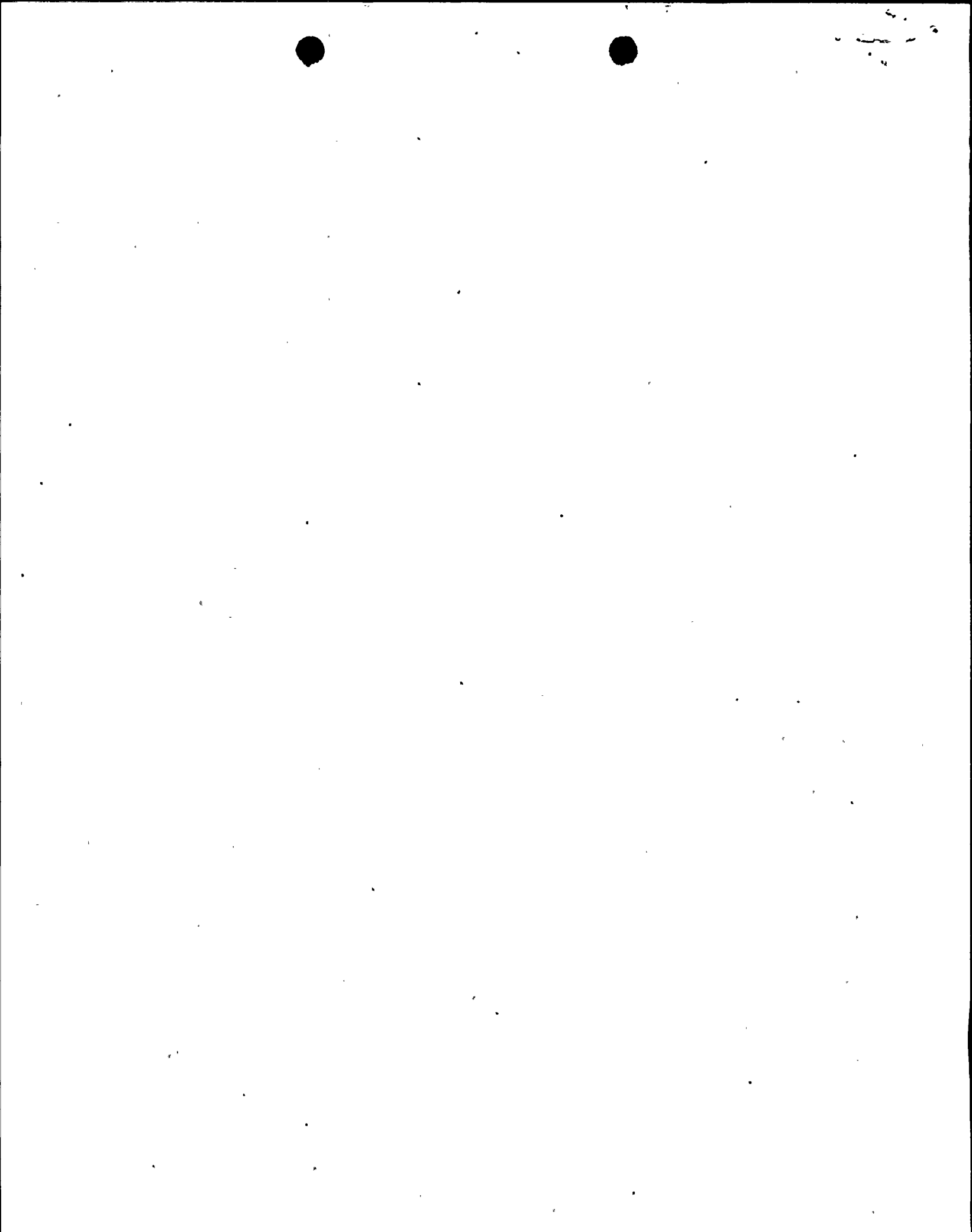
6.5.2.4 Consultants shall be utilized as determined by the CNRB chairman to provide expert advice to the CNRB.

MEETING FREQUENCY

6.5.2.5 The CNRB shall meet at least once per calendar quarter during the initial year of facility operation following fuel loading and at least once per six months thereafter.

QUORUM

6.5.2.6 A quorum of CNRB shall consist of the Chairman or his designated alternate and four members including alternates. No more than minority of the quorum shall have line responsibility for operation of the facility.



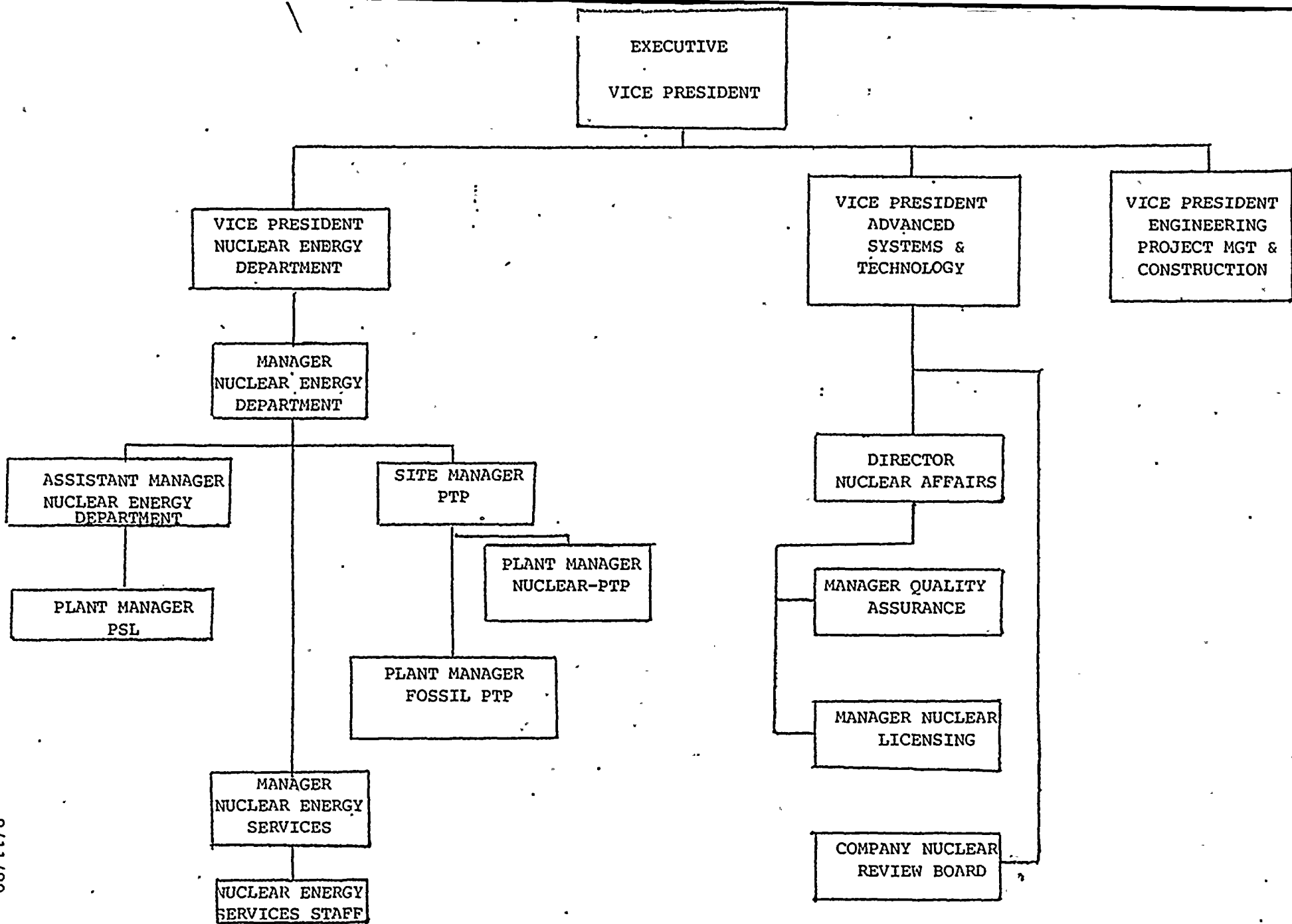


FIGURE 6.2-1 OFFSITE ORGANIZATION FOR FACILITY MANAGEMENT AND TECHNICAL SUPPORT

8/11/82

