

6.0 ADMINISTRATIVE CONTROLS

6.1 RESPONSIBILITY

6.1.1 The Plant Manager shall be responsible for overall facility operation and shall delegate in writing the succession to this responsibility during his absence.

6.2 ORGANIZATION

OFFSITE

6.2.1 The offsite organization for facility management and technical support shall be shown in Appendix A of the Florida Power & Light Company Topical Quality Assurance Report.

FACILITY STAFF

6.2.2 The Facility organization shall be as shown on Figure 6.2-1 and:

- a. Each on duty shift shall be composed of at least the minimum shift crew composition shown in Table 6.2-1.
- b. At least one licensed Operator shall be in the control room when fuel is in the reactor.
- c. At least two licensed Operators shall be present in the control room during reactor start-up, scheduled reactor shutdown and during recovery from reactor trips.
- d. An individual qualified in radiation protection procedures shall be on site when fuel is in the reactor.
- e. ALL CORE ALTERATIONS after the initial fuel loading shall be directly supervised by either a licensed Senior Reactor Operator or Senior Reactor Operator Limited to Fuel Handling who has no other concurrent responsibilities during this operation.
- f. A Fire Brigade of at least 3 members shall be maintained onsite at all times. The Fire Brigade shall not include 3 members of the minimum shift crew necessary for safe shutdown of the unit or any personnel required for other essential functions during a fire emergency.

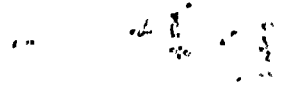


100

Handwritten text in the center of the page.

Handwritten text at the bottom right corner.

LEFT BLANK INTENTIONALLY



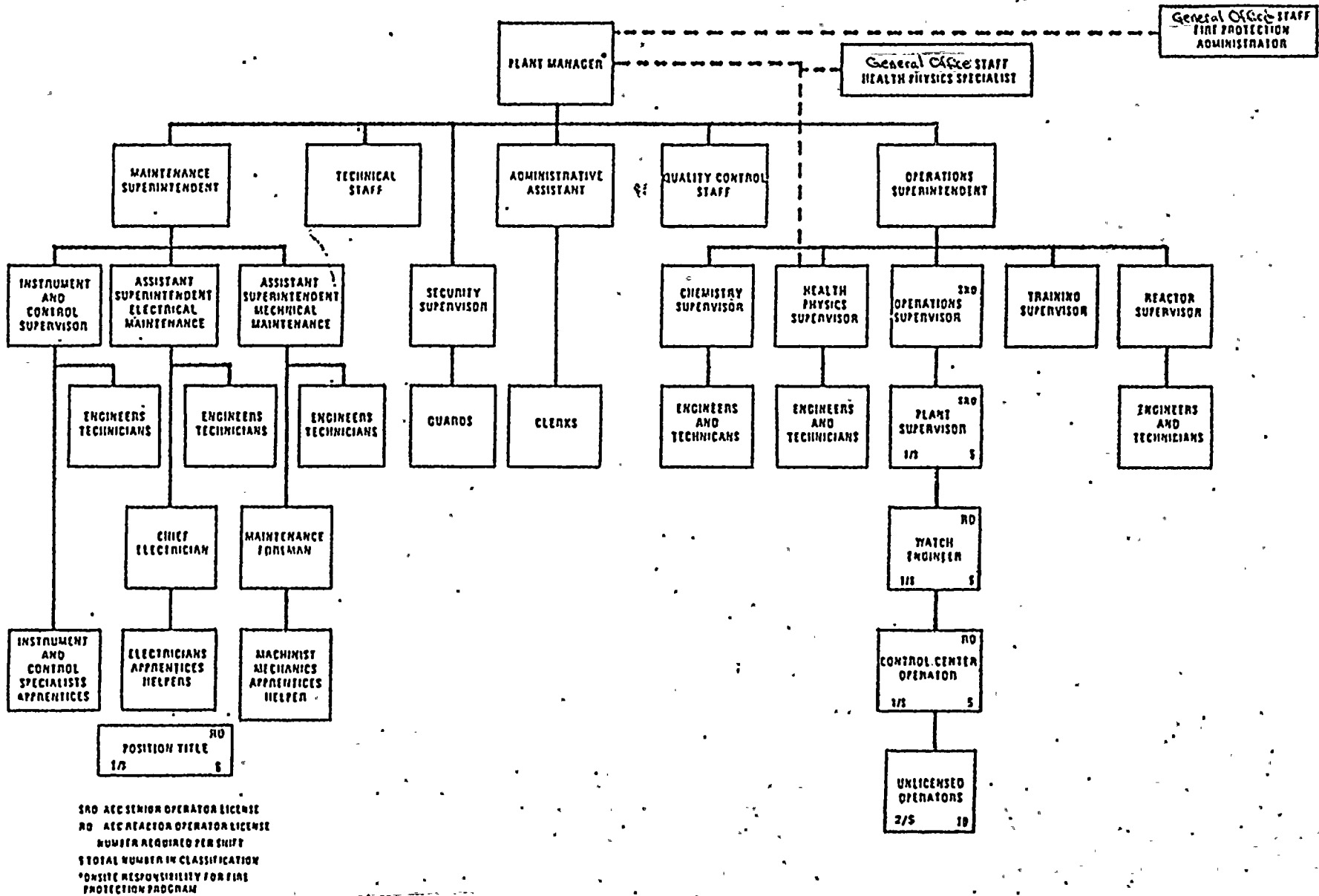
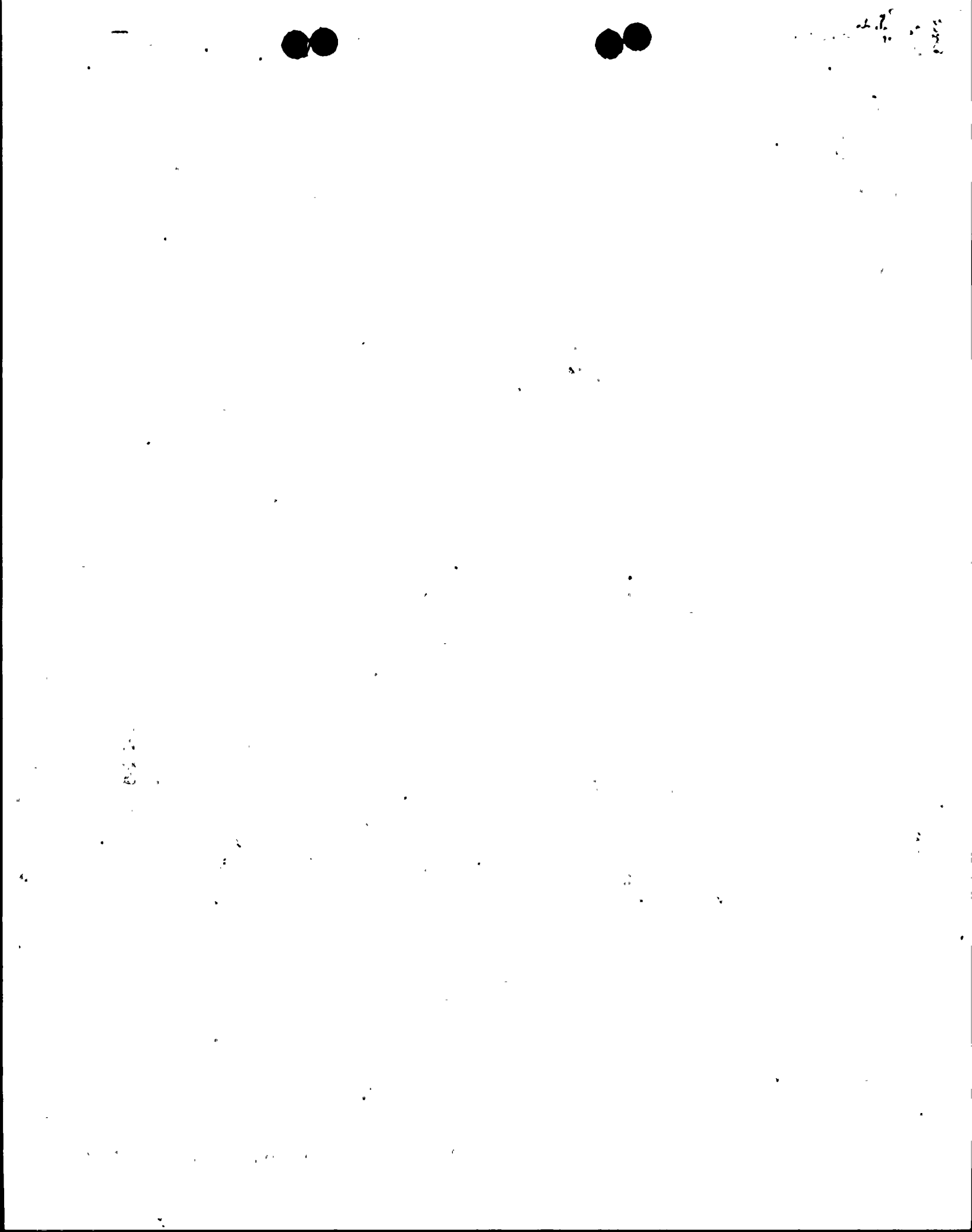


Figure 6.2-1 Facility Organization -- St. Lucie Plant, Unit 1



ADMINISTRATIVE CONTROLS

COMPOSITION

6.5.2.2 The composition of the CNRB shall be as shown in Appendix A of the Florida Power & Light Topical Quality Assurance Report.

The CNRB Chairman shall be designated in writing.

ALTERNATES

6.5.2.3 All alternate members shall be appointed in writing by the CNRB Chairman to serve on a temporary basis; however, no more than two alternates shall participate as voting members in CNRB activities at any one time.

CONSULTANTS

6.5.2.4 Consultants shall be utilized as determined by the CNRB Chairman to provide expert advice to the CNRB.

MEETING FREQUENCY

6.5.2.5 The CNRB shall meet at least once per calendar quarter during the initial year of facility operation following fuel loading and at least once per six months thereafter.

QUORUM

6.5.2.6 A quorum of CNRB shall consist of the chairman or his designated alternate and four members including alternates. No more than a minority of the quorum shall have line responsibility for operation of the facility.



Handwritten marks and scribbles in the top right corner.

Faint, illegible text lines across the upper middle section of the page.

Faint, illegible text lines in the middle section of the page.

SH. 112 700 1

Handwritten mark or number on the right side.

SH. 112 700 1

Faint, illegible text lines at the bottom of the page.

SAFETY EVALUATION

There are no safety related effects connected with the removal of the offsite management and technical support description and organization charts from the Technical Specifications. The purpose of including these descriptions is for general information of the corporate structure to those in possession of the Technical Specifications. However, the same information is also contained in the Florida Power & Light Company Topical Quality Assurance report (FPLTQAR).

The FPLTQAR is required to be updated to reflect all changes to the organization which affect quality within 30 days by letter and one year by amendment. It is our opinion that duplication of material between the two documents is unnecessary and that processing the same change twice is an unneeded burden on the time and manpower resources of both FPL and the NRC. Should the need arise for information on the organization, the FPLTQAR will be available to the same people who previously would have had the organizational description in the Technical Specifications.

The non FPL organizations which receive controlled copies of the St. Lucie Unit 1 Technical Specifications also receive controlled copies of the FPLTQAR, with only the Southwest Research Institute (SWRI) and Region II of the NRC receiving uncontrolled copies. SWRI is responsible for supplying our inservice inspection services. Their use of the Technical Specifications, therefore is limited to the ISI portions. Organizational questions, should they arise, can be handled through their FPL contact.

The other non-FPL recipient of controlled Technical Specifications is the NRC Reactor Project Office of Region II. The Region is forwarded an uncontrolled copy of the QA Manual, and should the need arise requiring the verification of the organization status, questions could be answered by the Resident Inspector.

In a similar fashion the composition of the CNRB is duplicated in both the Technical Specifications and FPLTQAR. For the same reasons as stated above, we propose to remove the specific composition of the CNRB from the Technical Specifications.



1952

1953

1954