

REGULATORY INFORMATION DISTRIBUTION SYSTEM (RIDS)

ACCESSION NBR: 8201290375 DOC. DATE: '82/01/25 NOTARIZED: NO DOCKET #
 FACIL: 50-335 St. Lucie Plant, Unit 1, Florida Power & Light Co. 05000335
 AUTH. NAME AUTHOR AFFILIATION
 FIELDER, J. Marsh & McLennan, Inc., M & M Nuclear Consultants, Inc. Div.
 RECIPIENT NAME RECIPIENT AFFILIATION
 SAUTZMAN, J. Antitrust & Economic Analysis Branch (Utility Finance)

SUBJECT: Forwards Endorsement 32 to MAELU Policy MF-88.

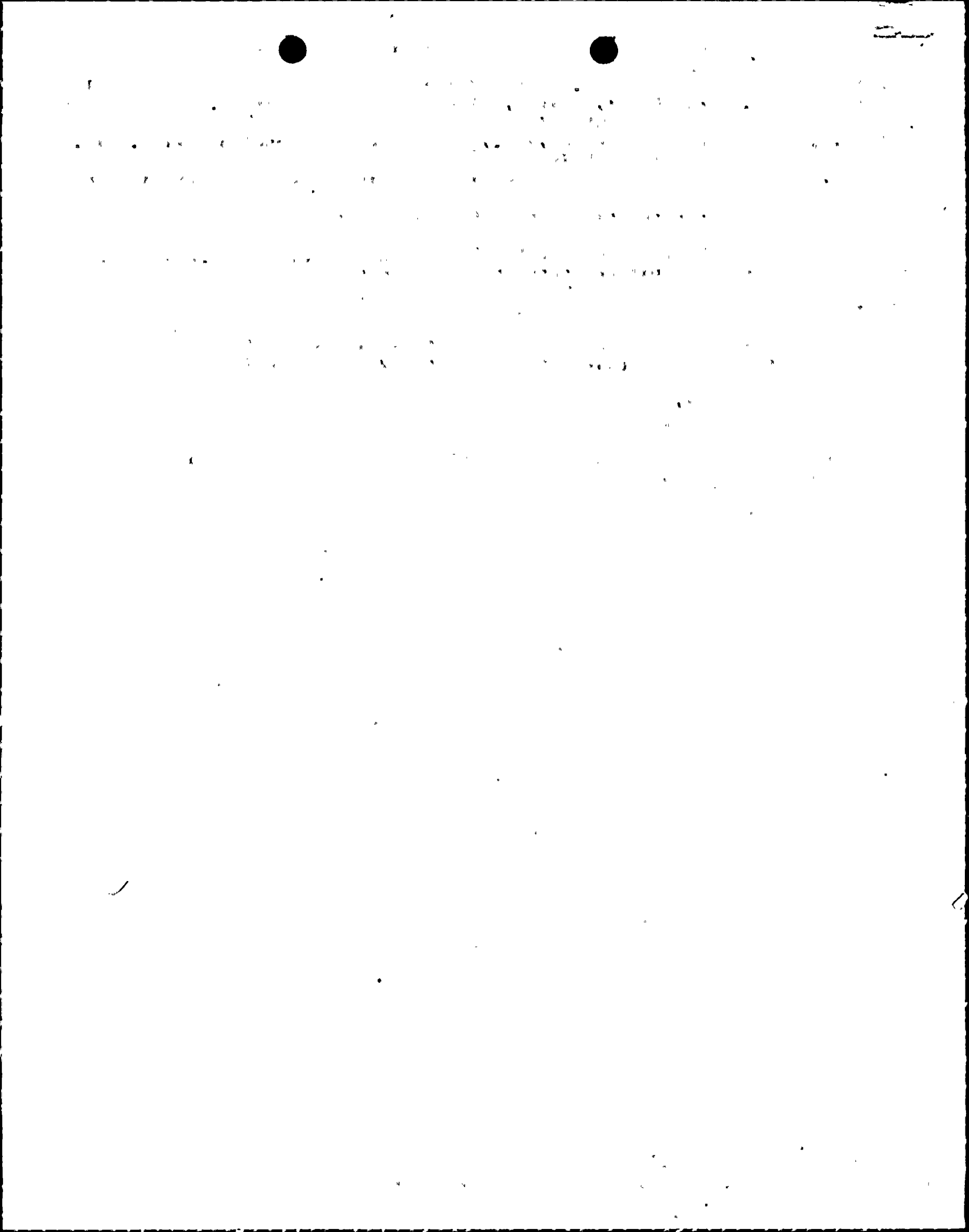
DISTRIBUTION CODE: M001S COPIES RECEIVED: LTR 1 ENCL 1 SIZE: 2

TITLE: Insurance: Indemnity/Endorsement Agreements

NOTES:

	RECIPIENT		COPIES			RECIPIENT		COPIES	
	ID	CODE/NAME	LTTR	ENCL		ID	CODE/NAME	LTTR	ENCL
INTERNAL:	CON	RODRIGUEZ, J	1	1	NRR/DL/ADL	07	1	0	
	REG FILE	01	1	1	SP		1	1	
EXTERNAL:	LPDR	03	1	1	NRC PDR	02	1	1	
	NTIS	04	1	1					

DNS.
4



**Marsh &
McLennan**

Marsh & McLennan, Incorporated
400 North Akard Street
Dallas, Texas 75201
Telephone 214 742-1941

Docket 50-335
↓
file

January 25, 1982

Mr. Jerome Saltzman, Chief
Office of Antitrust & Indemnity
Nuclear Reactor Regulation
Nuclear Regulatory Commission
Washington, D. C. 20555

Florida Power & Light Company
Plant St. Lucie
MAELU Policy MF-88
Endorsement #32

CERTIFIED COPIES

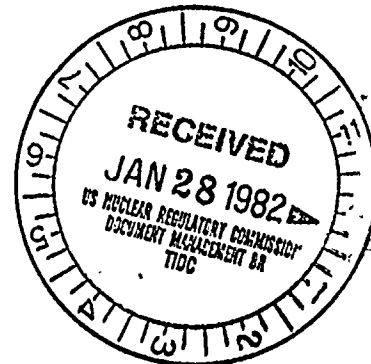
Dear Mr. Saltzman:

Enclosed for your records are eight certified copies of Endorsement #32 to Florida Power & Light Company's Plant St. Lucie MAELU Policy MF-88.

Sincerely,



Jean Fielder
M&M Nuclear Consultants



cc: R. E. Hinds
A. R. Swain

jf

Enclosure

MOO!
5
1/1

8201290375 820125
PDR ADOCK 05000335
PDR

NUCLEAR ENERGY LIABILITY INSURANCE

MUTUAL ATOMIC ENERGY LIABILITY UNDERWRITERS

ADVANCE PREMIUM ENDORSEMENT
and
STANDARD PREMIUM ENDORSEMENT

Calendar Year 1982

1. ADVANCE PREMIUM

It is agreed that the Advance Premium due the companies for the calendar year designated above is \$ 79,368.75.

2. STANDARD PREMIUM AND RESERVE PREMIUM

In the absence of a change in the Advance Premium indicated above, it is agreed that, subject to the provisions of the Industry Credit Rating Plan, the Standard Premium and Reserve Premium are:

Standard Premium \$ 79,368.75.

Reserve Premium \$ 59,645.25.

Effective Date of this Endorsement January 1, 1982 To form a part of Policy No. MF 88

Issued to Florida Power and Light Company

Date of Issue January 6, 1982

THIS IS TO CERTIFY THAT THIS IS A TRUE COPY OF ENDORSEMENT NO. 32 MADE PART OF NUCLEAR ENERGY POLICY (FACILITY FORM) NO MF 88 NO INSURANCE IS AFFORDED UNDER THIS TRUE COPY.

Theodore Geras

For the Subscribing Companies
MUTUAL ATOMIC ENERGY LIABILITY UNDERWRITERS

By *J.M. O'Connell*

Endorsement No. 32 Countersigned by _____ AUTHORIZED REPRESENTATIVE

