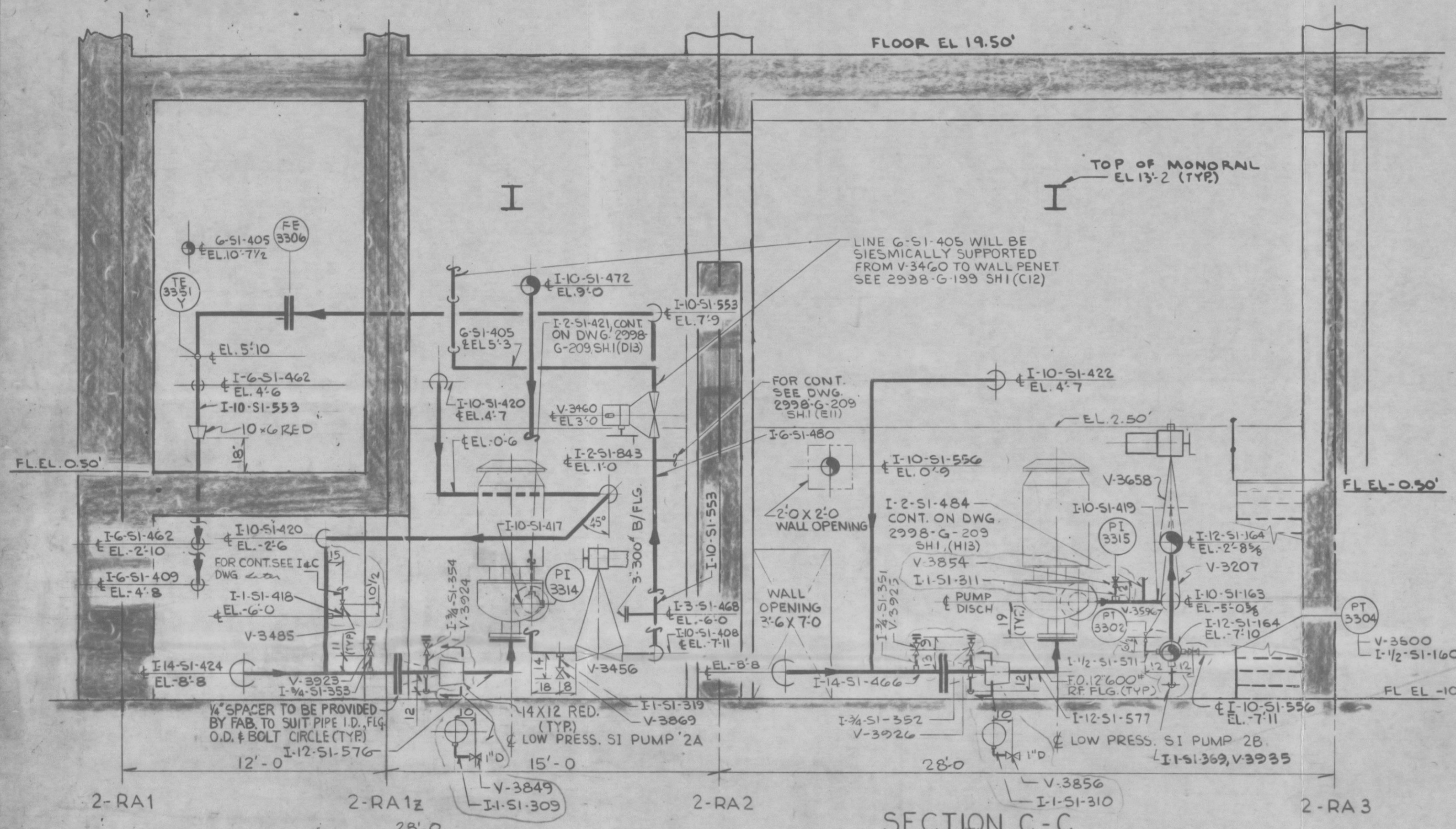
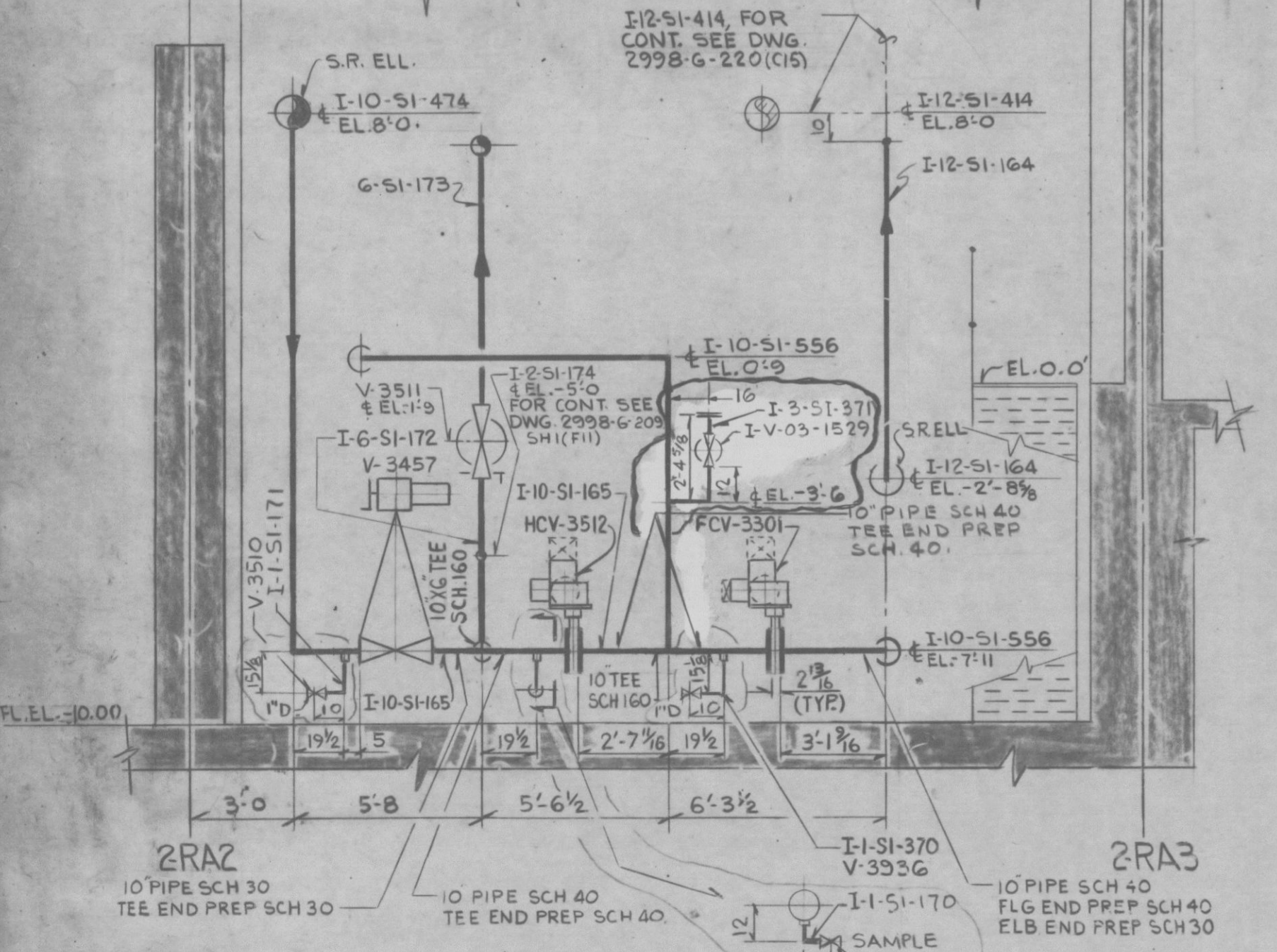


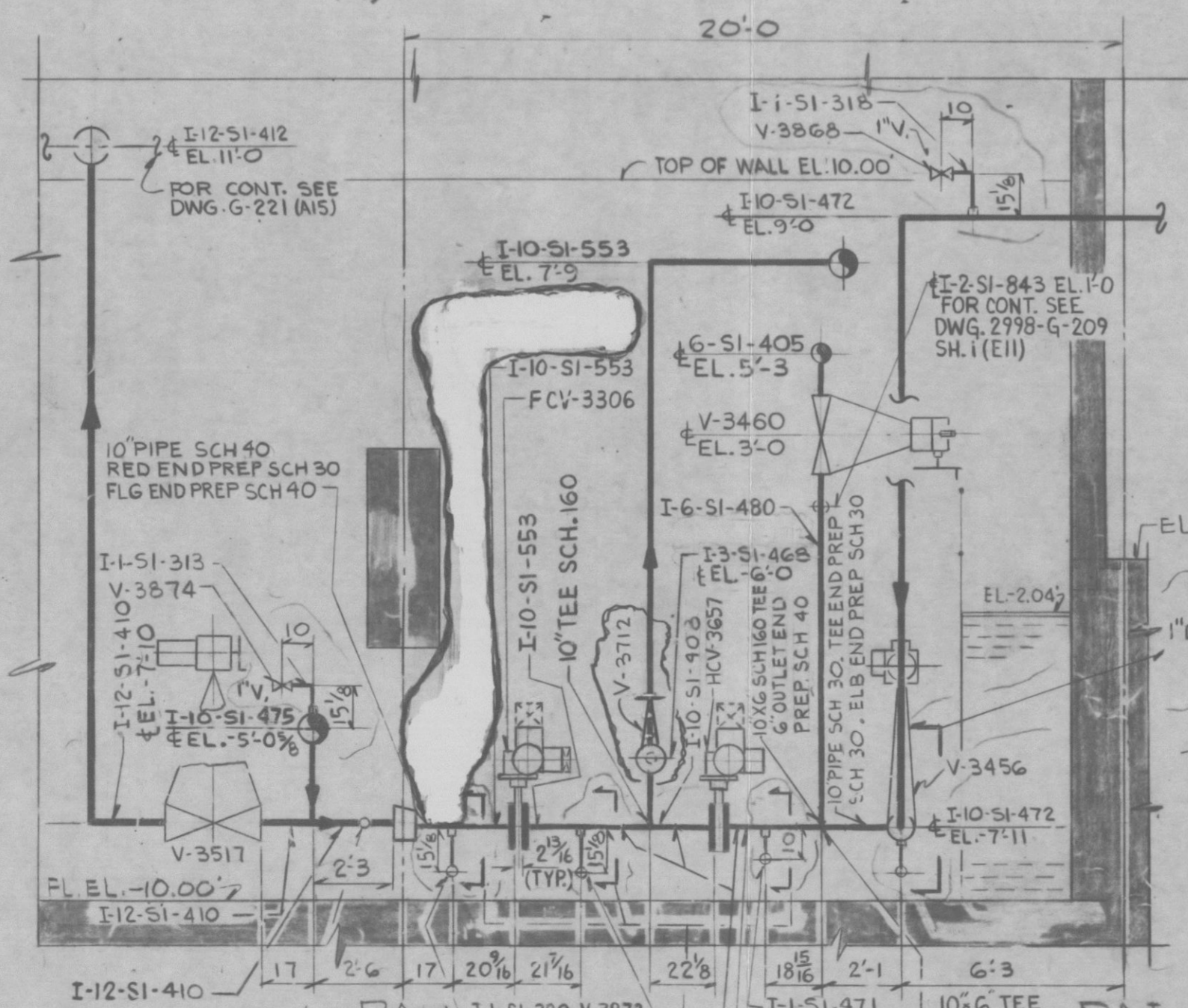
SECTION A-A
2998-G-199 SH.1(H10)



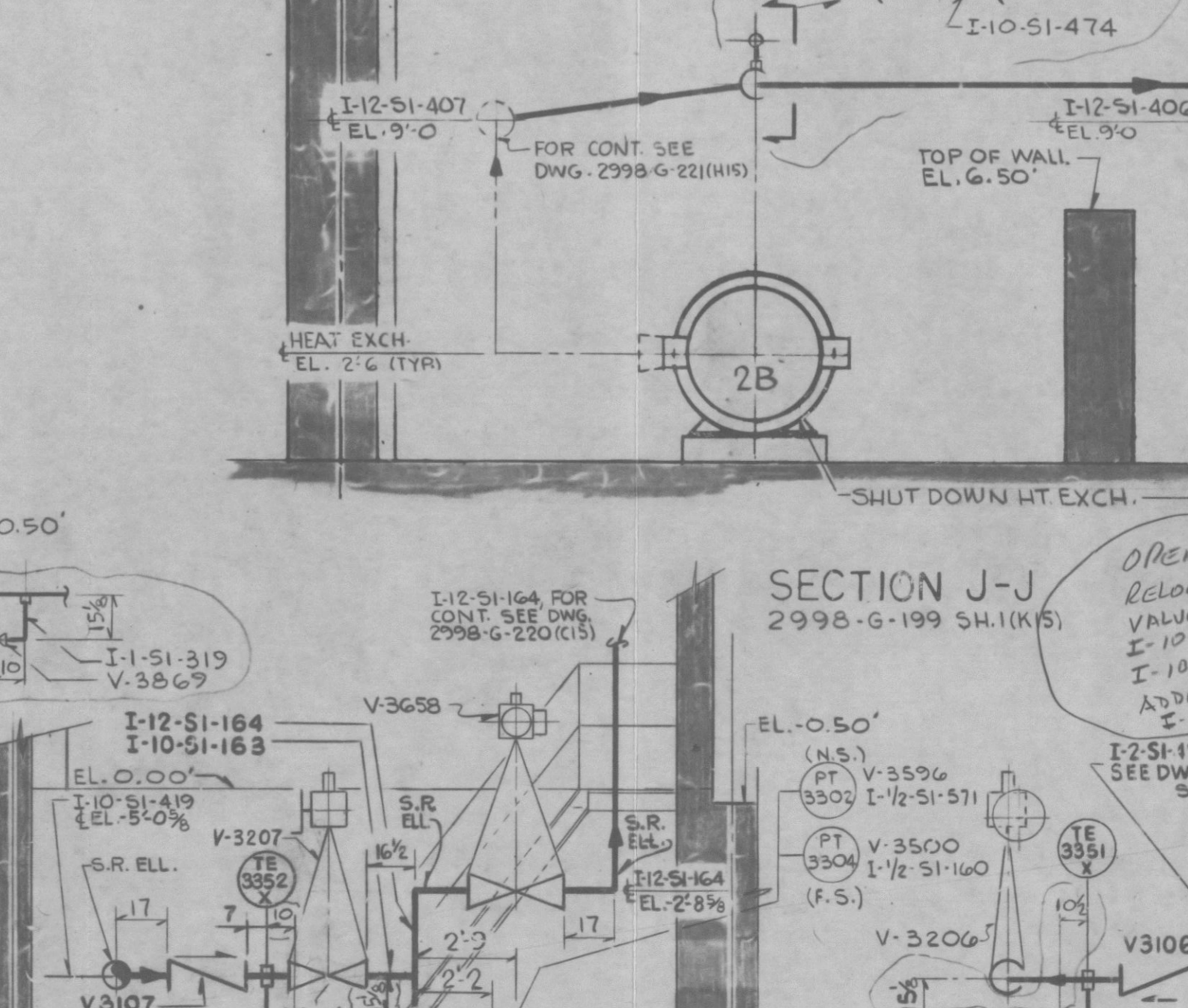
SECTION C-C
2998-G-199 SH.1(L9)



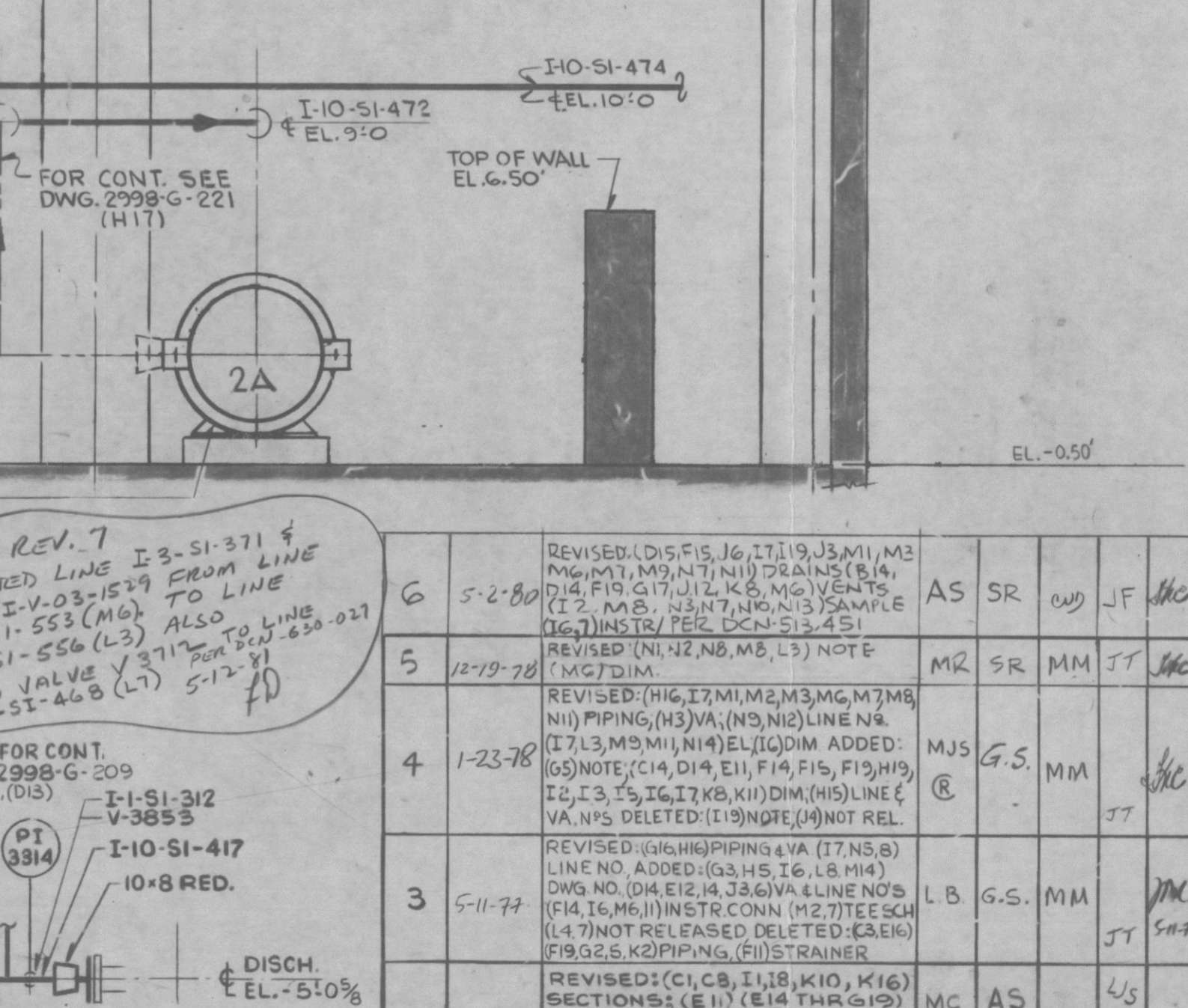
SECTION FF-FF
2998-G-199 SH.1(M3)



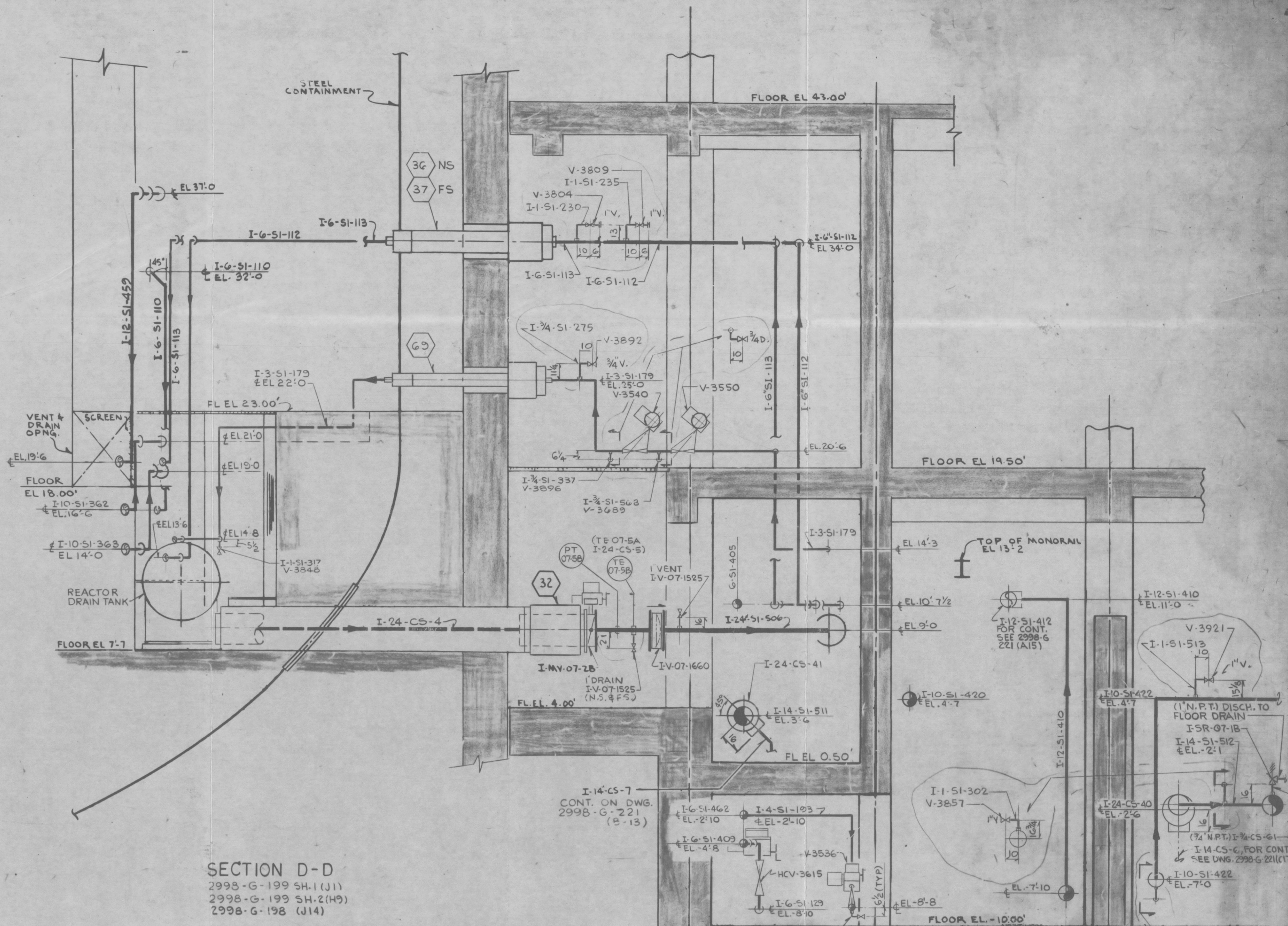
SECTION GG-GG
2998-G-199 SH.1(M3)



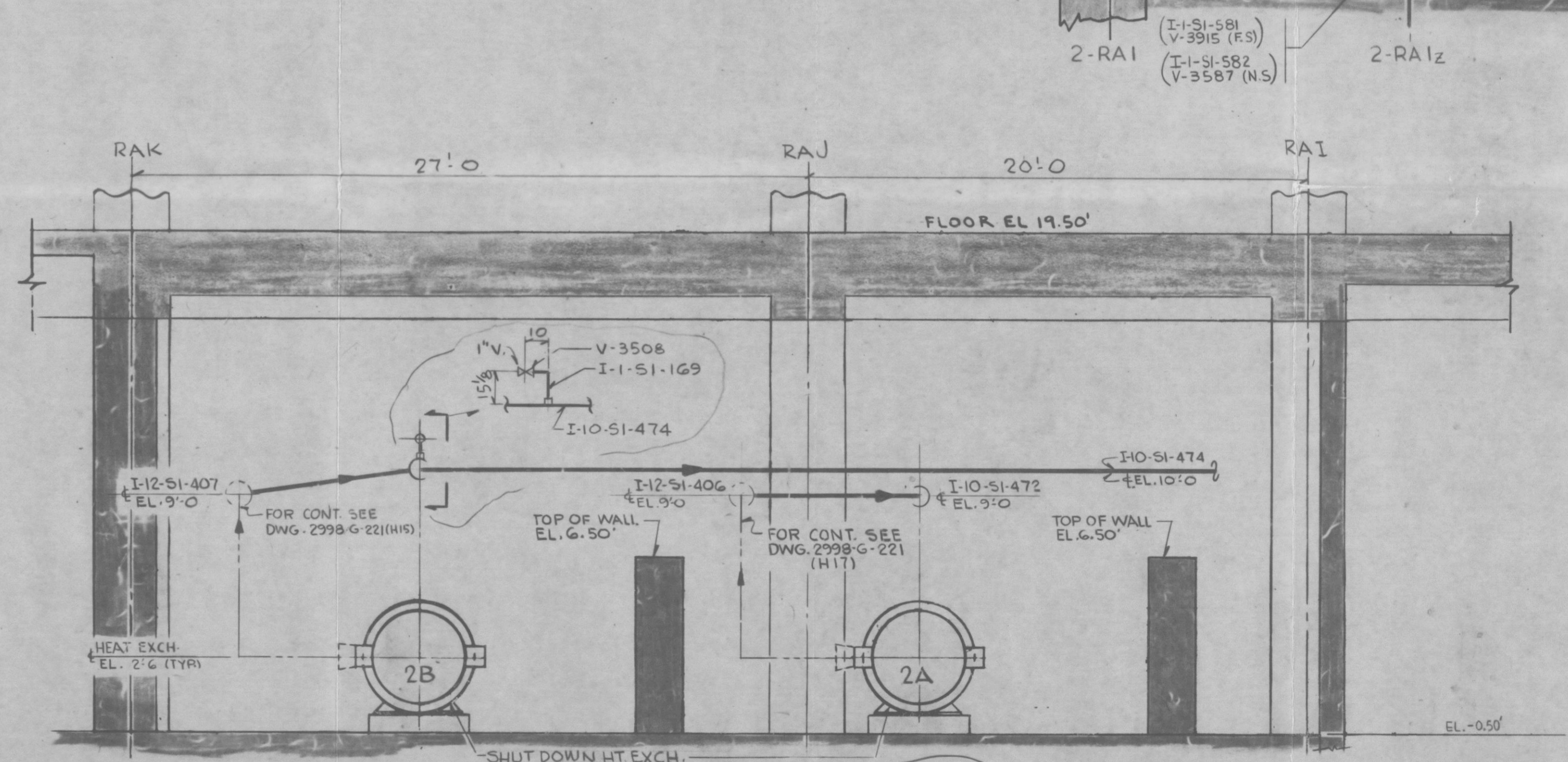
SECTION HH-HH
2998-G-199 SH.1(M7)



SECTION QQ-QQ
2998-G-199 SH.1(J3)



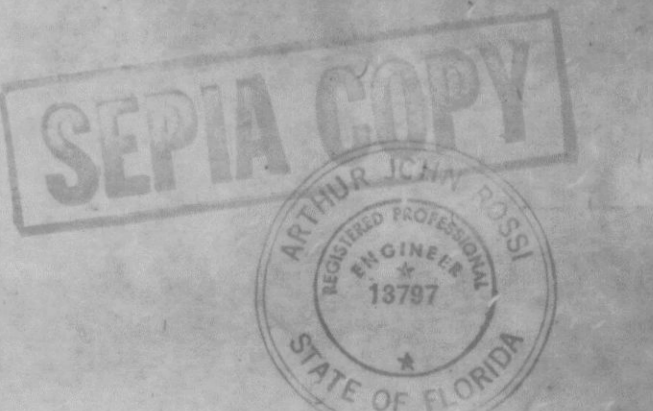
SECTION D-D
2998-G-199 SH.1(I11)
2998-G-199 SH.1(149)
2998-G-198 (J14)



SECTION J-J
2998-G-199 SH.1(K5)

60-231
Date: 10/17/73
REGULATORY DOCKET FILE

FOR NOTES & REFERENCES, SEE DWG. 2998-G-199, SH.1
1" = 10'



NO.	DATE	REVISION	BY	CHK.	APPROVED
1	5-28-73				
2	6-22-73				
3	5-11-74				
4	1-23-78				
5	12-19-78				

NUCLEAR SAFETY RELATED

THIS DOCUMENT IS THE PROPERTY OF ERASCO SERVICES INCORPORATED. ITS USE IS EXPRESSLY RESTRICTED BY THE TERMS OF THE CONTRACT, DATED AS OF 9-1-73 BETWEEN ERASCO SERVICES INCORPORATED AND FLORIDA POWER & LIGHT COMPANY.

FLORIDA POWER & LIGHT COMPANY
ST. LUCIE PLANT
1983-890 MW (e) EXTENSION UNIT NO.2
SAFETY INJECTION SYSTEM PIPING
SECTION 8 DETAILS

SCALE	DATE	NO.
SCALE 1/4"=1'-0"	DATE 10-17-73	NO. 2998-G-200