

REGULATORY DOCKET FILE COPY

DISTRIBUTION:

<u>Docket File w/inc.</u>	DVassallo
NRC PDR	DMuller
L PDR	RMattson
TERA	OELD
NSIC	L Gossick
ORB#4 Rdg	JRMiller
NRR Rdg	BGrimes
EDO Rdg	!Gammill
CKammerer	Gray File
SECY	Rm, 330
JCook	Green
HDenton	Ticket
ECase	File w/
H Berkow/N Russell	inc.
	Rm330
	PERickson w/inc.
	LShao

Docket No. 50-335

DEC 21 1979

The Honorable Daniel A. Mica
 United States House of Representatives
 Washington, D. C. 20515

Dear Congressman Mica:

We received the enclosed memo (Enclosure 1) from the Department of Energy which transferred a letter (Enclosure 2) to us for our action. The letter from Ms. Simone Scime to you expresses concern about the safety of the St. Lucie nuclear plant.

Mr. Peter Erickson of my staff called Ms. Scime to find out if she had any specific concerns with respect to St. Lucie. She indicated no specific concerns but was interested in our perceptions of the safety of the St. Lucie plant and how we assure safe operation.

I have enclosed three documents which explain briefly our review of nuclear plants to insure a safe design (Enclosure 3), "The Reactor Licensing Process" (Enclosure 4) and our "Revised Inspection Program For Nuclear Power Plant Safety" (Enclosure 5).

At the St. Lucie site, St. Lucie Unit No. 1 is now operating at rated power and St. Lucie Unit No. 2 is still under construction.

We continue to review and inspect both units and are requiring a number of modifications in both as a result of our reanalysis of all plants following the Three Mile Island Unit 2 (TMI-2) accident. We have determined that St. Lucie Unit 1 is operating safely but may require it to be shutdown soon to expedite the installation of certain modifications which resulted from our TMI-2 related reviews. Also, a Resident Inspector (Enclosure 5) will be assigned to the St. Lucie site in early 1980.

Sincerely,

Original signed by R. G. Smith *for*

Lee V. Gossick
 Executive Director for
 Operations

*SEE PREVIOUS YELLOWS FOR CONCURRENCES

Enclosures:

- 11/29/79 DOE Memo
- 10/10/79 Scime Ltr.
- Insuring Safe Design of

8001160447 OGA
 SWK
 12/20/79
 C-ORB#4:DOR
 RRaid*
 12/11/79
 A-AD-ORP:DOR
 !Gammill*
 12/11/79
 DEisenhut*
 12/14/79

OFFICE	Nuclear Power Plants	ORB#4:DOB	DD:NRR	D:NRR	EDO
SURNAME	Reactor Licensing Process	PERickson/cb	ECase*	HDenton*	LVGossick
DATE	Revised Inspection Program Fact Sheet	12/19/79	12/14/79	12/17/79	12/18/79

REGULATORY DOCKET FILE COPY

APR 1 2 010

APR 1 2 010

DISTRIBUTION:

Docket File w/inc.	DMuller	BGrimes
NRC PDR "	RMattson	WGammill
L PDR "	OELD	Gray File
ORB#4 Rdg	OCA (3)	Rm. 330
TERA	GErtter (ED07954)	
NRR Rdg	MGroff	EDO
NSIC	MStein	Green Ticket
EDO Rdg	DEisenhut	File w/inc.
CKammerer	RVollmer	Rm. 330
SECY	TJCarter	
JCook	RReid	
HDenton	RIngram	
ECase	PERickson/w/inc.	
HBerkow/WRussell	LShao	
DVassallo	JRMiller	

Docket No. 50-335

The Honorable Daniel A. Mica
House of Representatives
Washington, D. C. 20515

Dear Congressman Mica:

We received the enclosed memo (Enclosure 1) from the Department of Energy which transferred a letter (Enclosure 2) to us for our action. The letter from Ms. Simone Scime to you expresses concern about the safety of the St. Lucie nuclear plant.

Mr. Peter Erickson of my staff called Ms. Scime to find out if she had any specific concerns with respect to St. Lucie. She indicated no specific concerns but was interested in our perceptions of the safety of the St. Lucie plant and how we assure safe operation.

I have enclosed three documents which explain briefly our review of nuclear plants to insure a safe design (Enclosure 3), "The Reactor Licensing Process" (Enclosure 4) and our "Revised Inspection Program For Nuclear Power Plant Safety" (Enclosure 5).

At the St. Lucie site, St. Lucie Unit No. 1 is now operating at rated power and St. Lucie Unit No. 2 is still under construction.

We continue to review and inspect both units and are requiring a number of modifications in both as a result of our reanalysis of all plants following the Three Mile Island Unit 2 (TMI-2) accident. We have determined that St. Lucie Unit 1 is operating safely but may require it to be shutdown soon to expedite the installation of certain modifications which resulted from our TMI-2 related reviews. Also, a Resident Inspector (Enclosure 5) will be assigned to the St. Lucie site in early 1980.

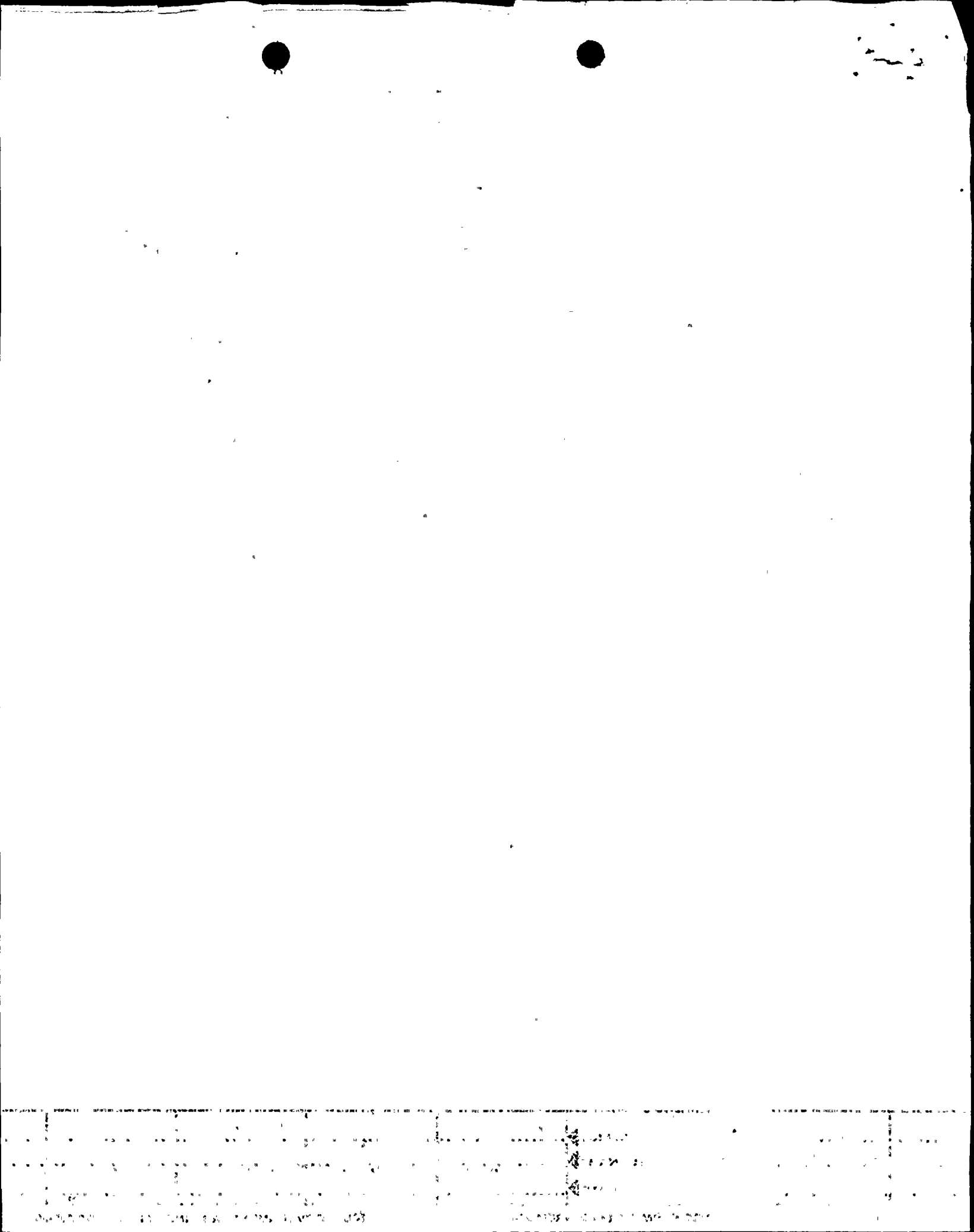
Sincerely,

*SEE PREVIOUS YELLOW FOR CONCURRENCE

Enclosures:

- | | | | |
|----------------------------|-------------|--------------|------------|
| 1. 11/29/79 DOE Memo | C-ORB#4:DOR | A-AD-ORP:DOR | D:DOR |
| 2. 10/10/79 Scime Ltr. | RReid* | WGammill* | DEisenhut* |
| 3. Insuring Safe Design of | 12/11/79 | 12/11/79 | 12/14/79 |

OFFICE	Nuclear Power Plants	ORB#4:DOR	DD:NRR	D:NRR	EDO
SURNAME	Reactor Licensing Process	PERickson/cb	ECase	HDenton	
DATE	Revised Inspection Program	12/11/79	12/11/79	12/11/79	12/11/79
	Fact Sheet				



Docket No. 50-335

Honorable Daniel A. Mica
House of Representatives
Washington, D. C. 20515

Dear Congressman Mica:

We received the enclosed memo (Enclosure 1) from the Department of Energy which transferred a letter (Enclosure 2) to us for our action. The letter from Ms. Simone Scime to you expresses concern about the safety of the St. Lucie nuclear plant.

Mr. Peter Erickson of my staff called Ms. Scime to find out if she had any specific concerns with respect to St. Lucie. She indicated no specific concerns but was interested in our perceptions of the safety of the St. Lucie plant and how we assure safe operation.

I have enclosed three documents which explain briefly our review of nuclear plants to insure a safe design (Enclosure 3), "The Reactor Licensing Process" (Enclosure 4) and our "Revised Inspection Program For Nuclear Power Plant Safety" (Enclosure 5).

At the St. Lucie site, St. Lucie Unit No. 1 is now operating at rated power and St. Lucie Unit No. 2 is still under construction.

We continue to review and inspect both units and are requiring a number of modifications in both as a result of our reanalysis of all plants following the Three Mile Island Unit 2 (TMI-2) accident. We have determined that St. Lucie Unit 1 is operating safely but, may require it to be shutdown soon to expedite the installation of certain modifications which resulted from our TMI-2 related reviews. Also, a Resident Inspector (Enclosure 5) will be assigned to the St. Lucie site in early 1980.

Sincerely,

DISTRIBUTION:
Docket File w/inc. DMuller PERickson/w/inc.
NRC PDR " RMattson LShao
L PDR " OELD JRMiller
ORB#4 Rdg OCA (3) WPGammill
NRRRDG Gertter (EDO-7954)
EDO Rdg MGroff
CKammerer MStein Gray File w/inc.
SECY DEisenhut Green Ticket File
JCook RVollmer w/inc. Rm. 330
HDenton WRussell EDO
ECase TJCarter BGrimes
HBerkow/WRussell RReid
DVassallo RIngram

Enclosures:

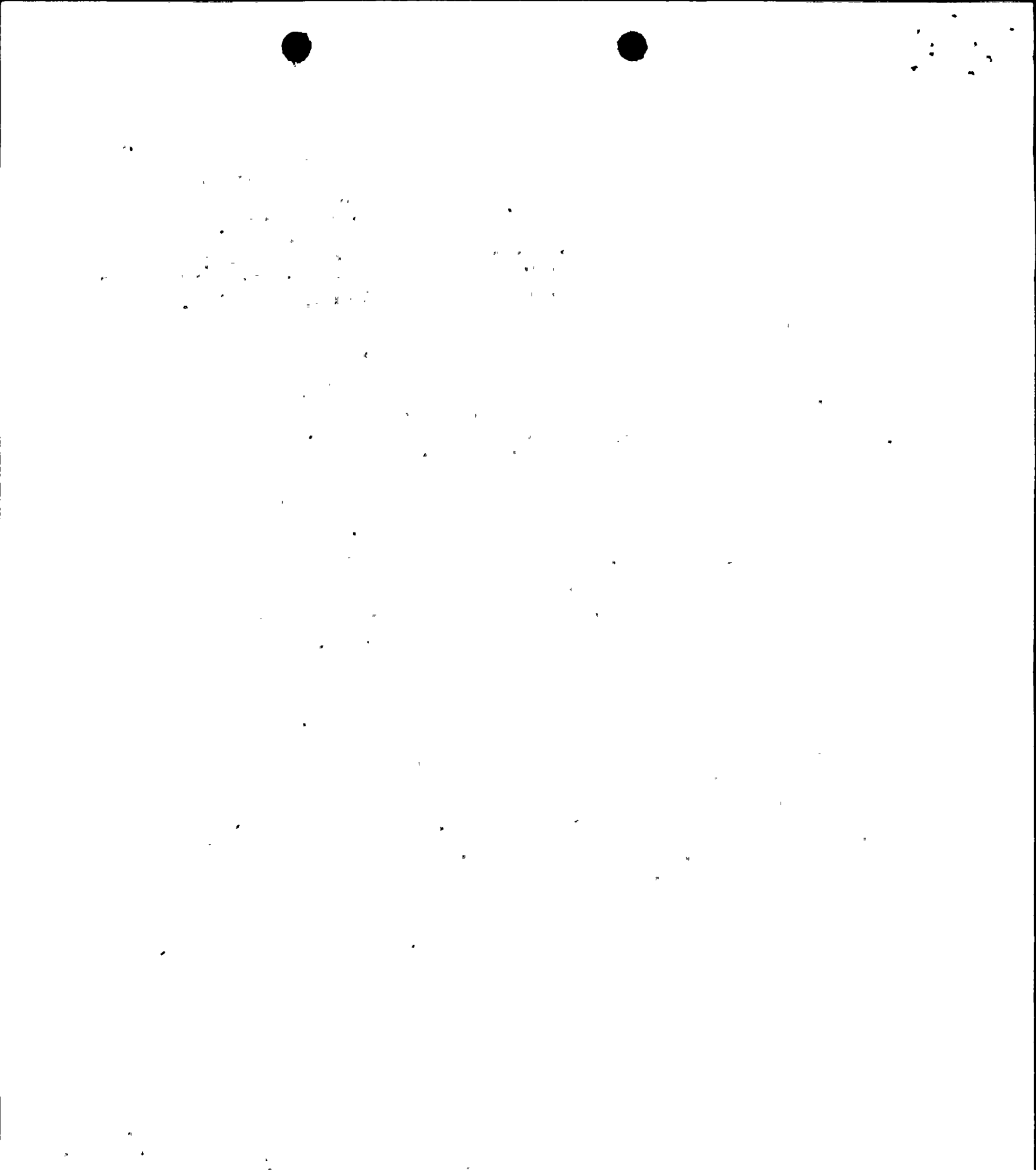
1. 11/29/79 DOE Memo
2. 10/10/79 Scime Ltr.
3. Insuring Safe Design of Nuclear Power Plants

C-ORB#4-DOR
RReid
12/11/79

A-AD-ORP:DOR
WPGammill
12/11/79

D:DOR
DEisenhut
12/11/79

4. Reactor Licensing Process	ORB#4-DOR	DD:NRR	D:NRR	EDO
5. Revised Inspection Program	PERickson/cp	EGCase	HRDenton	
SURNAME				
DATE	12/11/79	12/ /79	12/ /79	12/ /79



<p>1950</p> <p>1951</p> <p>1952</p> <p>1953</p> <p>1954</p> <p>1955</p> <p>1956</p> <p>1957</p> <p>1958</p> <p>1959</p> <p>1960</p>	<p>1961</p> <p>1962</p> <p>1963</p> <p>1964</p> <p>1965</p> <p>1966</p> <p>1967</p> <p>1968</p> <p>1969</p> <p>1970</p>	<p>1971</p> <p>1972</p> <p>1973</p> <p>1974</p> <p>1975</p> <p>1976</p> <p>1977</p> <p>1978</p> <p>1979</p> <p>1980</p>
---	---	---