

Hematite Decommissioning Project	Procedure: HDP-PR-FSS-712, Final Status Surveys of Structures, Systems, and Components (SSCs)		
			Revision: 5 Page A-1 of 2

**APPENDIX A-1
FINAL STATUS SURVEY RESULTS**

Survey Unit Description & Survey Unit Number:	PSA 01-09 / STM-9 Biased	Survey Log Number:	6938 C 160203	Date:	12/3/2015
Technician(s): Print/Sign/Date:	J. Michel / <i>JM</i> 12/3/15	Reviewed by: Print/Sign/Date:	J. Bushman / <i>JB</i> 12/3/15	Time:	16:30
Instrument # 1		Instrument # 2		Tennelec	
Instrument & Probe:	Lud 2360/43-68 (dpm/100cm²): 413.6	Instrument & Probe:	N/A (dpm/100cm²): N/A	Unit #:	N/A
Instrument SN:	248144 Bkg 1: 109	Instrument SN:	N/A Bkg 1: N/A	Alpha Bkg:	N/A
Cal Due Date:	10/2/2016 Bkg 2: 104	Cal Due Date:	N/A Bkg 2: N/A	Alpha Eff:	N/A
Probe Size:	125 Bkg 3: 113	Probe Size:	N/A Bkg 3: N/A	Alpha MDA (dpm):	N/A
Weighted Eff.:	9.5% Ave. Bkg: 109	Weighted Eff.:	N/A Ave. Bkg: N/A	Batch No:	N/A
Cal Due:	N/A	Beta Bkg:	N/A	Beta Eff:	N/A
Beta MDA (dpm):	N/A	Beta MDA (dpm):	N/A		

Comments: Biased locations taken in 18" pipe from MH 01 to the West. Static measurements taken at all points by allowing instrument to set in place for two minutes ensuring proper count.

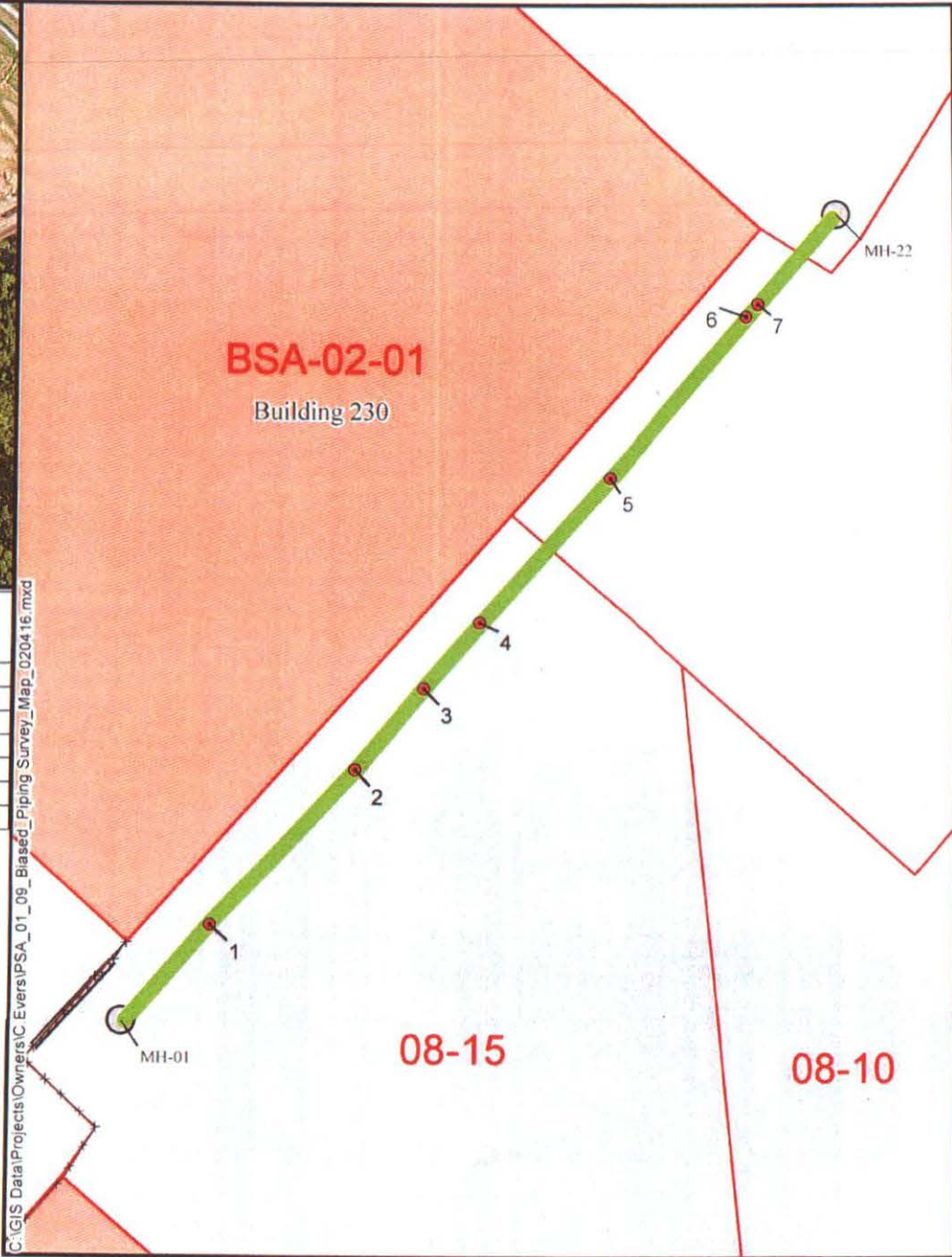
Sample No.	Instrument Number (i.e., 1 or 2)	Description	Removable Alpha		Removable Beta		Total Contamination (α + β)		DCGL Fraction
			Net CPM	DPM / 100cm²	Net CPM	DPM / 100cm²	Gross CPM	DPM / 100cm²	
1	1	Biased reading at 25' at downspout	N/A	N/A	N/A	N/A	121	104	0.01
2	1	Biased reading at 67'	N/A	N/A	N/A	N/A	114	45	0.00
3	1	Biased reading at 88' at building drain	N/A	N/A	N/A	N/A	97	0	0.00
4	1	Biased reading at 106' at downspout	N/A	N/A	N/A	N/A	93	0	0.00
5	1	Biased reading at 145' at downspout	N/A	N/A	N/A	N/A	88	0	0.00
6	1	Biased reading at 187' at downspout	N/A	N/A	N/A	N/A	113	37	0.00
7	1	Biased reading at 190' at 45 degree bend	N/A	N/A	N/A	N/A	130	181	0.01
N/A	N/A	N/A	N/A	N/A	N/A	N/A	N/A	N/A	N/A
N/A	N/A	N/A	N/A	N/A	N/A	N/A	N/A	N/A	N/A
N/A	N/A	N/A	N/A	N/A	N/A	N/A	N/A	N/A	N/A
N/A	N/A	N/A	N/A	N/A	N/A	N/A	N/A	N/A	N/A
N/A	N/A	N/A	N/A	N/A	N/A	N/A	N/A	N/A	N/A
N/A	N/A	N/A	N/A	N/A	N/A	N/A	N/A	N/A	N/A
N/A	N/A	N/A	N/A	N/A	N/A	N/A	N/A	N/A	N/A
N/A	N/A	N/A	N/A	N/A	N/A	N/A	N/A	N/A	N/A
N/A	N/A	N/A	N/A	N/A	N/A	N/A	N/A	N/A	N/A
N/A	N/A	N/A	N/A	N/A	N/A	N/A	N/A	N/A	N/A
N/A	N/A	N/A	N/A	N/A	N/A	N/A	N/A	N/A	N/A
N/A	N/A	N/A	N/A	N/A	N/A	N/A	N/A	N/A	N/A
N/A	N/A	N/A	N/A	N/A	N/A	N/A	N/A	N/A	N/A
N/A	N/A	N/A	N/A	N/A	N/A	N/A	N/A	N/A	N/A
N/A	N/A	N/A	N/A	N/A	N/A	N/A	N/A	N/A	N/A
N/A	N/A	N/A	N/A	N/A	N/A	N/A	N/A	N/A	N/A
N/A	N/A	N/A	N/A	N/A	N/A	N/A	N/A	N/A	N/A
N/A	N/A	N/A	N/A	N/A	N/A	N/A	N/A	N/A	N/A
N/A	N/A	N/A	N/A	N/A	N/A	N/A	N/A	N/A	N/A
N/A	N/A	N/A	N/A	N/A	N/A	N/A	N/A	N/A	N/A
N/A	N/A	N/A	N/A	N/A	N/A	N/A	N/A	N/A	N/A



Source: Esri, DigitalGlobe, GeoEye, Earthstar Geographics, CNES/Airbus DS, USDA, USGS, AEX, Getmapping, Aerogrid, IGN, IGP, swisstopo, and the GIS

C:\GIS Data\Projects\Owners\C Evers\PSA_01_09_Biased_Piping_Survey_Map_020416.mxd

Survey Unit	Sample ID	Distance from MH-01 toward MH-22
PSA-01-09	1	25 ft.
PSA-01-09	2	67 ft.
PSA-01-09	3	88 ft.
PSA-01-09	4	106 ft.
PSA-01-09	5	145 ft.
PSA-01-09	6	187 ft.
PSA-01-09	7	190 ft.



LEGEND:

- Survey Location
- STM-9
- LSA Boundaries
- Manhole
- Building
- Concrete Slab
- ×— Fence

Requested By J. Michel	Page 2 of 2	Document/Reason HDP-ENGI3-WP-009
PSA-01-09 Biased Piping Survey Survey # 6938-C-160203		
Hematite Decommissioning Project Jefferson County Hematite, MO		
Prepared By SDJ	Rev 0	Date 02-04-16