

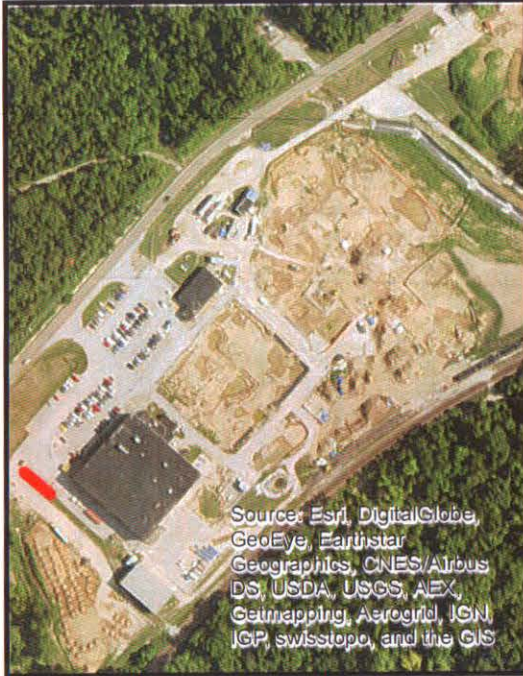
Hematite Decommissioning Project	Procedure: HDP-PR-FSS-712, Final Status Surveys of Structures, Systems, and Components (SSCs)	Revision: 5	Page A-1 of 2
--	---	-------------	---------------

**APPENDIX A-1
FINAL STATUS SURVEY RESULTS**

Survey Unit Description & Survey Unit Number:	STM-7 / PSA 01-07	Survey Log Number:	7658C160608	Date:	6/7/2016
Technician(s) Print/Sign/Date	J. Michel / <i>JM</i> 6/9/16	Reviewed by: Print/Sign/Date	J. Bushman / <i>JB</i> 6/13/16	Time:	16:30
Instrument # 1		Instrument # 2		Tennelec	
Instrument & Probe:	Lud 2360/43-68 MDA (dpm/100cm ²): 493.4	Instrument & Probe:	N/A MDA (dpm/100cm ²): N/A	Unit #:	N/A
Instrument SN:	248144	Instrument SN:	N/A	Alpha Bkg:	N/A
Cal Due Date:	10/2/2016	Cal Due Date:	N/A	Alpha Eff:	N/A
Probe Size:	125	Probe Size:	N/A	Alpha MDA (dpm):	N/A
Weighted Eff.:	9.5%	Weighted Eff.:	N/A	Batch No:	N/A
	Bkg 1: 157		Bkg 1: N/A	Beta Bkg:	N/A
	Bkg 2: 151		Bkg 2: N/A	Beta Eff:	N/A
	Bkg 3: 157		Bkg 3: N/A	Beta MDA (dpm):	N/A

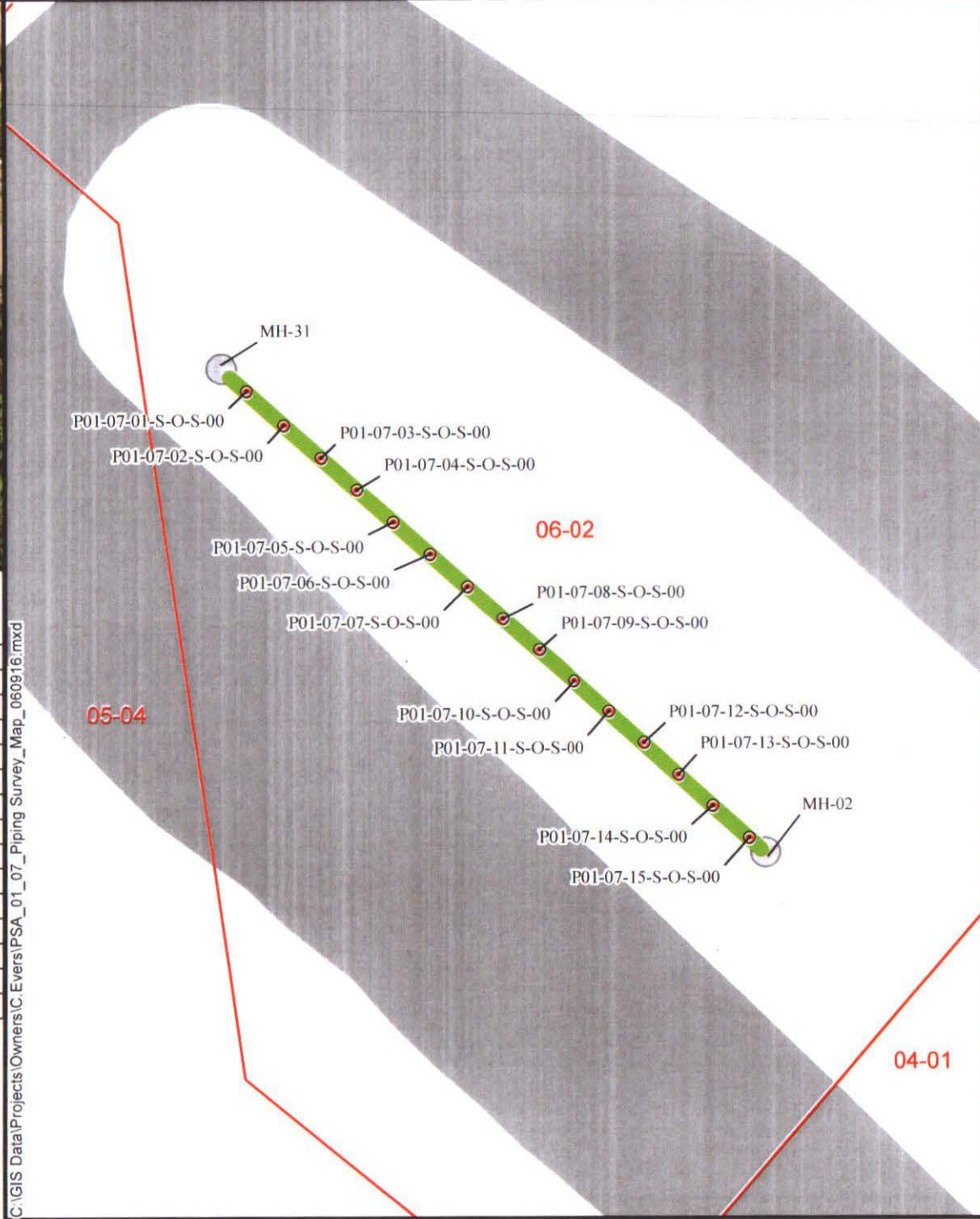
Comments: Systematic FSS scan of STM-7. Pipe surveyed from MH-02 Northwest to MH-31. Scan performed using sled pulled at a rate of 1"-2" per second. Static measurements taken at all systematic locations by stopping sled for 1 minute. See map page 2 for systematic locations. 3 background readings taken in MH-02 at waist level. No anomolous readings over background recorded.

Sample No.	Instrument Number (i.e., 1 or 2)	Description	Removable Alpha		Removable Beta		Total Contamination (α + β)		DCGL Fraction
			Net CPM	DPM / 100cm ²	Net CPM	DPM / 100cm ²	Gross CPM	DPM / 100cm ²	
1	1	P01-07-01-S-O-S-00	N/A	N/A	N/A	N/A	101	0	0.00
2	1	P01-07-02-S-O-S-00	N/A	N/A	N/A	N/A	112	0	0.00
3	1	P01-07-03-S-O-S-00	N/A	N/A	N/A	N/A	116	0	0.00
4	1	P01-07-04-S-O-S-00	N/A	N/A	N/A	N/A	88	0	0.00
5	1	P01-07-05-S-O-S-00	N/A	N/A	N/A	N/A	108	0	0.00
6	1	P01-07-06-S-O-S-00	N/A	N/A	N/A	N/A	121	0	0.00
7	1	P01-07-07-S-O-S-00	N/A	N/A	N/A	N/A	114	0	0.00
8	1	P01-07-08-S-O-S-00	N/A	N/A	N/A	N/A	90	0	0.00
9	1	P01-07-09-S-O-S-00	N/A	N/A	N/A	N/A	82	0	0.00
10	1	P01-07-10-S-O-S-00	N/A	N/A	N/A	N/A	96	0	0.00
11	1	P01-07-11-S-O-S-00	N/A	N/A	N/A	N/A	99	0	0.00
12	1	P01-07-12-S-O-S-00	N/A	N/A	N/A	N/A	83	0	0.00
13	1	P01-07-13-S-O-S-00	N/A	N/A	N/A	N/A	101	0	0.00
14	1	P01-07-14-S-O-S-00	N/A	N/A	N/A	N/A	115	0	0.00
15	1	P01-07-15-S-O-S-00	N/A	N/A	N/A	N/A	98	0	0.00
N/A	N/A	N/A	N/A	N/A	N/A	N/A	N/A	N/A	N/A
N/A	N/A	N/A	N/A	N/A	N/A	N/A	N/A	N/A	N/A
N/A	N/A	N/A	N/A	N/A	N/A	N/A	N/A	N/A	N/A
N/A	N/A	N/A	N/A	N/A	N/A	N/A	N/A	N/A	N/A
N/A	N/A	N/A	N/A	N/A	N/A	N/A	N/A	N/A	N/A
N/A	N/A	N/A	N/A	N/A	N/A	N/A	N/A	N/A	N/A
N/A	N/A	N/A	N/A	N/A	N/A	N/A	N/A	N/A	N/A
N/A	N/A	N/A	N/A	N/A	N/A	N/A	N/A	N/A	N/A
N/A	N/A	N/A	N/A	N/A	N/A	N/A	N/A	N/A	N/A
N/A	N/A	N/A	N/A	N/A	N/A	N/A	N/A	N/A	N/A
N/A	N/A	N/A	N/A	N/A	N/A	N/A	N/A	N/A	N/A



Survey Unit	Sample ID	Distance from MH-31 toward MH-02
PSA-01-07	P01-07-01-S-O-S-00	2 ft.
PSA-01-07	P01-07-02-S-O-S-00	7 ft.
PSA-01-07	P01-07-03-S-O-S-00	12 ft.
PSA-01-07	P01-07-04-S-O-S-00	17 ft.
PSA-01-07	P01-07-05-S-O-S-00	22 ft.
PSA-01-07	P01-07-06-S-O-S-00	27 ft.
PSA-01-07	P01-07-07-S-O-S-00	32 ft.
PSA-01-07	P01-07-08-S-O-S-00	37 ft.
PSA-01-07	P01-07-09-S-O-S-00	42 ft.
PSA-01-07	P01-07-10-S-O-S-00	47 ft.
PSA-01-07	P01-07-11-S-O-S-00	52 ft.
PSA-01-07	P01-07-12-S-O-S-00	57 ft.
PSA-01-07	P01-07-13-S-O-S-00	62 ft.
PSA-01-07	P01-07-14-S-O-S-00	67 ft.
PSA-01-07	P01-07-15-S-O-S-00	72 ft.

C:\GIS Data\Projects\Owners\C.Evers\PSA_01_07_Piping Survey_Map_060916.mxd



LEGEND:

- STM - 7 Pipe Samples
- STM - 7
- LSA Boundaries
- Manhole
- Building
- Driveway
- Fence

Survey Log #
7658 C160608

Requested By C. Evers	Discipline/Reason HDP-ENG13-WP-009		
PSA-01-07 Piping Figure			
Hematite Decommissioning Project Jefferson County Hematite, MO			
Prepared By SDJ	Rev 0	Date 11/17	Scale 12-03-15

PSA 01-07