

Hematite Decommissioning Project	Procedure: HDP-PR-FSS-712. Final Status Surveys of Structures, Systems, and Components (SSCs)	Revision: 5	Page A-1 of 2
----------------------------------------	-----------------------------------------------------------------------------------------------	-------------	---------------

**APPENDIX A-1
FINAL STATUS SURVEY RESULTS**

Survey Unit Description & Survey Unit Number: STM-2 / PSA 01-02			Survey Log Number: 7017C160211			Date: 2/11/2016			
Technician(s): J. Michel <i>JM</i> 2/11/16			Reviewed by: J. Bushman / <i>JB</i> 2/11/16			Time: 16:30			
Instrument # 1			Instrument # 2			Tennelec			
Instrument & Probe:	Lud 2360/43-68	MDA (dpm/100cm ²): 456.7	Instrument & Probe:	N/A	MDA (dpm/100cm ²): N/A	Unit #:	N/A	Cal Due:	N/A
Instrument SN:	248144	Bkg 1: 127	Instrument SN:	N/A	Bkg 1: N/A	Alpha Bkg:	N/A	Beta Bkg:	N/A
Cal Due Date:	10/2/2016	Bkg 2: 135	Cal Due Date:	N/A	Bkg 2: N/A	Alpha Eff:	N/A	Beta Eff:	N/A
Probe Size:	125	Bkg 3: 136	Probe Size:	N/A	Bkg 3: N/A	Alpha MDA (dpm):	N/A	Beta MDA (dpm):	N/A
Weighted Eff.:	9.5%	Ave. Bkg: 133	Weighted Eff.:	N/A	Ave. Bkg: N/A	Batch No:	N/A		

Systematic FSS scan of STM-2. Pipe surveyed from MH 09 east to MH 18. Instrument sled pulled via braided steel cable at 1-2" per second. Static measurements taken at all points by allowing instrument to set in place for two minutes ensuring proper count. See map page 2 for systematic locations.

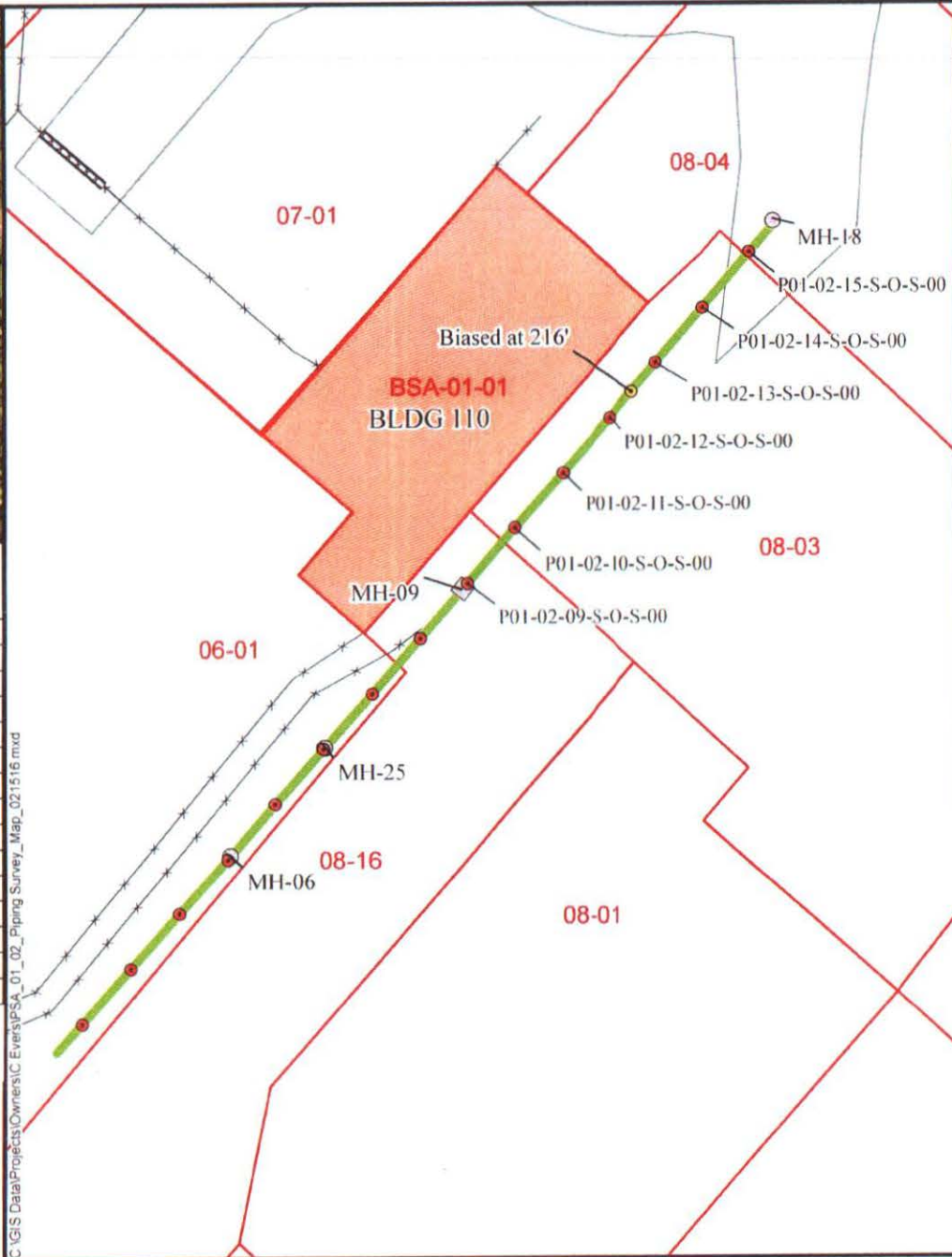
Comments:

Sample No.	Instrument Number (i.e., 1 or 2)	Description	Removable Alpha		Removable Beta		Total Contamination (α + β)		DCGL Fraction
			Net CPM	DPM / 100cm ²	Net CPM	DPM / 100cm ²	Gross CPM	DPM / 100cm ²	
1	1	P01-02-09-S-O-S-00	N/A	N/A	N/A	N/A	151	155	0.01
2	1	P01-02-10-S-O-S-00	N/A	N/A	N/A	N/A	107	0	0.00
3	1	P01-02-11-S-O-S-00	N/A	N/A	N/A	N/A	109	0	0.00
4	1	P01-02-12-S-O-S-00	N/A	N/A	N/A	N/A	120	0	0.00
5	1	Biased reading at seam @ 216'	N/A	N/A	N/A	N/A	133	3	0.00
6	1	P01-02-13-S-O-S-00	N/A	N/A	N/A	N/A	133	3	0.00
7	1	P01-02-14-S-O-S-00	N/A	N/A	N/A	N/A	148	130	0.01
8	1	P01-02-15-S-O-S-00	N/A	N/A	N/A	N/A	146	113	0.01
N/A	N/A	N/A	N/A	N/A	N/A	N/A	N/A	N/A	N/A
N/A	N/A	N/A	N/A	N/A	N/A	N/A	N/A	N/A	N/A
N/A	N/A	N/A	N/A	N/A	N/A	N/A	N/A	N/A	N/A
N/A	N/A	N/A	N/A	N/A	N/A	N/A	N/A	N/A	N/A
N/A	N/A	N/A	N/A	N/A	N/A	N/A	N/A	N/A	N/A
N/A	N/A	N/A	N/A	N/A	N/A	N/A	N/A	N/A	N/A
N/A	N/A	N/A	N/A	N/A	N/A	N/A	N/A	N/A	N/A
N/A	N/A	N/A	N/A	N/A	N/A	N/A	N/A	N/A	N/A
N/A	N/A	N/A	N/A	N/A	N/A	N/A	N/A	N/A	N/A
N/A	N/A	N/A	N/A	N/A	N/A	N/A	N/A	N/A	N/A
N/A	N/A	N/A	N/A	N/A	N/A	N/A	N/A	N/A	N/A
N/A	N/A	N/A	N/A	N/A	N/A	N/A	N/A	N/A	N/A
N/A	N/A	N/A	N/A	N/A	N/A	N/A	N/A	N/A	N/A
N/A	N/A	N/A	N/A	N/A	N/A	N/A	N/A	N/A	N/A
N/A	N/A	N/A	N/A	N/A	N/A	N/A	N/A	N/A	N/A
N/A	N/A	N/A	N/A	N/A	N/A	N/A	N/A	N/A	N/A
N/A	N/A	N/A	N/A	N/A	N/A	N/A	N/A	N/A	N/A
N/A	N/A	N/A	N/A	N/A	N/A	N/A	N/A	N/A	N/A
N/A	N/A	N/A	N/A	N/A	N/A	N/A	N/A	N/A	N/A
N/A	N/A	N/A	N/A	N/A	N/A	N/A	N/A	N/A	N/A



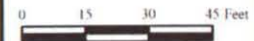
Source: Esri, DigitalGlobe, GeoEye, Earthstar Geographics, CNES/Airbus DS, USDA, USGS, AEX, Getmapping, Aerogrid, IGN, IGP, swisstopo, and the GIS

Survey Unit	Sample ID	Distance from Southwest end of pipe
PSA-01-02	P01-02-01-S-O-S-00	11 ft.
PSA-01-02	P01-02-02-S-O-S-00	29 ft.
PSA-01-02	P01-02-03-S-O-S-00	47 ft.
PSA-01-02	P01-02-04-S-O-S-00	65 ft.
PSA-01-02	P01-02-05-S-O-S-00	83 ft.
PSA-01-02	P01-02-06-S-O-S-00	101 ft.
PSA-01-02	P01-02-07-S-O-S-00	119 ft.
PSA-01-02	P01-02-08-S-O-S-00	137 ft.
PSA-01-02	P01-02-09-S-O-S-00	155 ft.
PSA-01-02	P01-02-10-S-O-S-00	173 ft.
PSA-01-02	P01-02-11-S-O-S-00	191 ft.
PSA-01-02	P01-02-12-S-O-S-00	209 ft.
PSA-01-02	P01-02-13-S-O-S-00	227 ft.
PSA-01-02	P01-02-14-S-O-S-00	245 ft.
PSA-01-02	P01-02-15-S-O-S-00	263 ft.



LEGEND:

- Biased Reading
- Sample Location
- PSA 01-02
- LSA Boundaries
- Manholes
- Building
- Haul Road
- x Fence



Requested By J. Michel	Document/Reason HDP-1-NIG-13-WF-009		
PSA-01-02 Piping Survey Survey # 7017-C-160211			
Hematite Decommissioning Project Jefferson County Hematite, MO			
Prepared By SDJ	Rev 0	Size 8.5X11	Date 01-02-16

C:\GIS Data\Projects\Owners\PSA_01_02_Piping Survey_Map_021516.mxd