

ATTACHMENT 1

PROPOSED CHANGES TO APPENDIX A

TECHNICAL SPECIFICATIONS

FOR

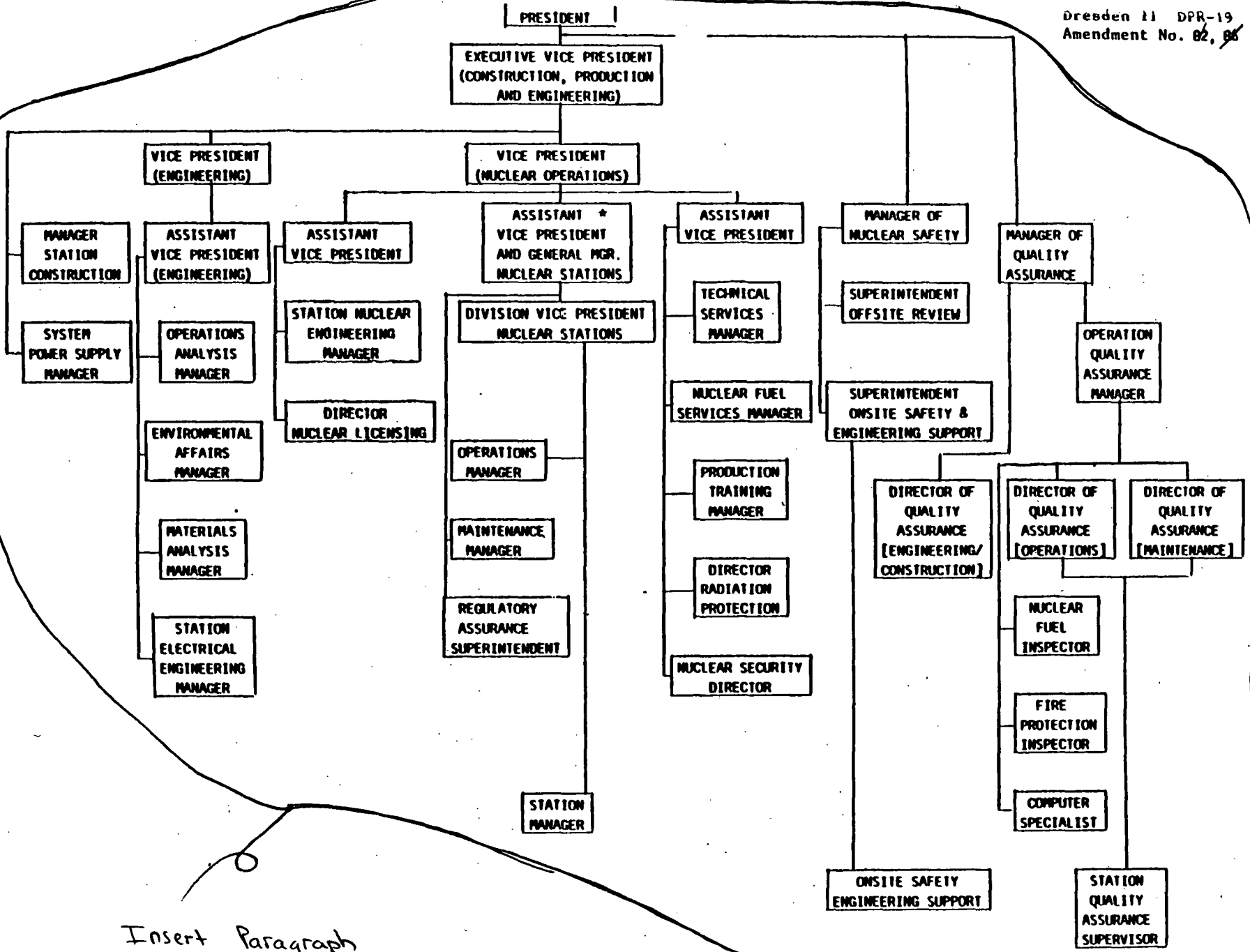
DRESDEN STATION UNITS 2 AND 3

8811300453 881107
PDR ADOCK 05000237
P PDC

6.0 ADMINISTRATIVE CONTROLS

6.1 Organization, Review, Investigation and Audit

- A. The Station Manager shall have overall full-time responsibility for safe operation of the facility. During periods when the Station Manager is unavailable, he shall designate this responsibility to an established alternate who satisfies the ANSI N18.1 of March 8, 1971 experience requirements for plant manager.
- B. The organization chart^s of the corporate management which relates to the operation of this station ~~is shown in Figure 1-1~~ and the normal functional organization chart for operation of the station ~~is~~^{are} shown in Figures ~~1-1~~ 1-0 through 1-7 of the Commonwealth Edison Quality Assurance Manual.
- C. The shift manning for the station shall be as shown in Table 6.1.1. The Assistant Superintendent-Operating, Operating Engineer, Shift Engineers, and Shift Foreman shall have a Senior Operating License. The Fuel Handling Foreman has a limited Senior Operating License. The Assistant Vice President and General Manager - Nuclear Stations on the corporate level has responsibility for the Fire Protection Program. An Operating Engineer at the station will be responsible for implementation of the Fire Protection Program. A fire brigade of at least 5 members shall be maintained on-site at all times. This excludes the shift crew necessary for safe shutdown of the plant and any personnel required for essential functions during a fire emergency.
- D. Qualifications of the station management and operating staff shall meet minimum acceptable levels as described in ANSI N18.1, "Selection and Training of Nuclear Power Plant Personnel," dated March 8, 1971, with the exception of the Radiological-Chemical Supervisor who shall meet or exceed the qualifications of Radiation Protection Manager of Regulatory Guide 1.8, September, 1975, and the Shift Technical Advisor shall have a bachelor's degree or equivalent in a scientific or engineering discipline with specific training in plant design and response and analysis of the plant for transients and accidents. The individual filling the position of Assistant Superintendent - Technical Services shall meet the minimum acceptable level for "Technical Manager" as described in 4.2.4 of ANSI N18.1 - 1971.
- E. Retraining and replacement training of Station personnel shall be in accordance with ANSI N18.1, "Selection and Training of Nuclear Power Plant Personnel," dated March 8, 1971.



Insert Paragraph
On following Page

Figure 6.1-1
OFFSITE ORGANIZATION

* Responsible for Fire Protection Program

THIS PAGE IS INTENTIONALLY BLANK.
THE OFFSITE ORGANIZATION CHART HAS BEEN
REPLACED BY REFERENCE TO THE CECO QUALITY
ASSURANCE MANUAL.

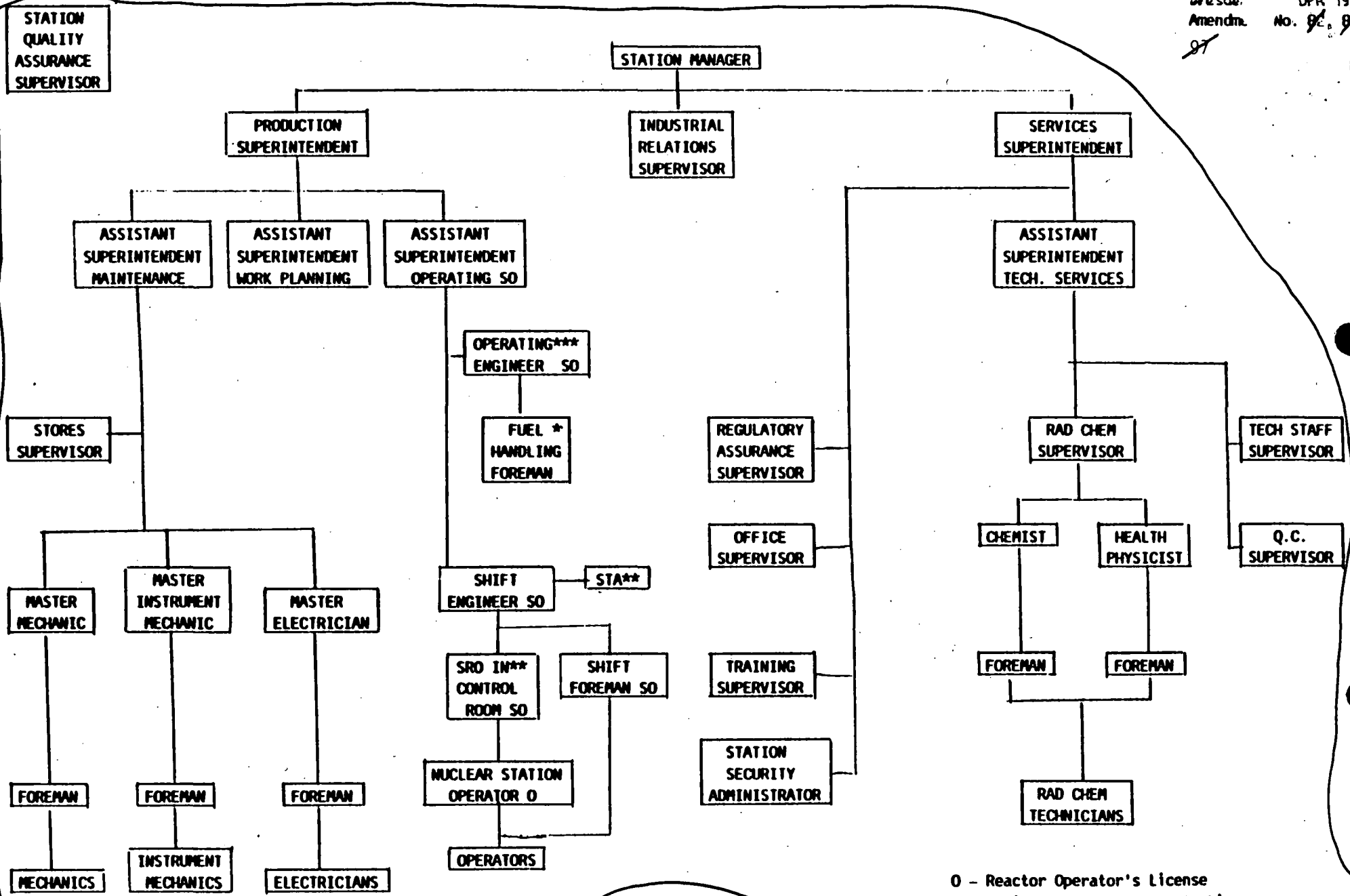


Figure 6.1-2

STATION ORGANIZATION

- O - Reactor Operator's License
- SO - Senior Reactor Operator's License
- * - Fuel Handling Foreman has SO or SO (Limited) Required only during fuel handling.
- ** - May be filled by a SCRE.
- *** - Responsible for Implementation of Fire Protection Program.

Insert Paragraph
 On following Page

THIS PAGE IS INTENTIONALLY BLANK.
THE STATION ORGANIZATION CHART HAS BEEN
REPLACED BY REFERENCE TO THE CECO QUALITY
ASSURANCE MANUAL.

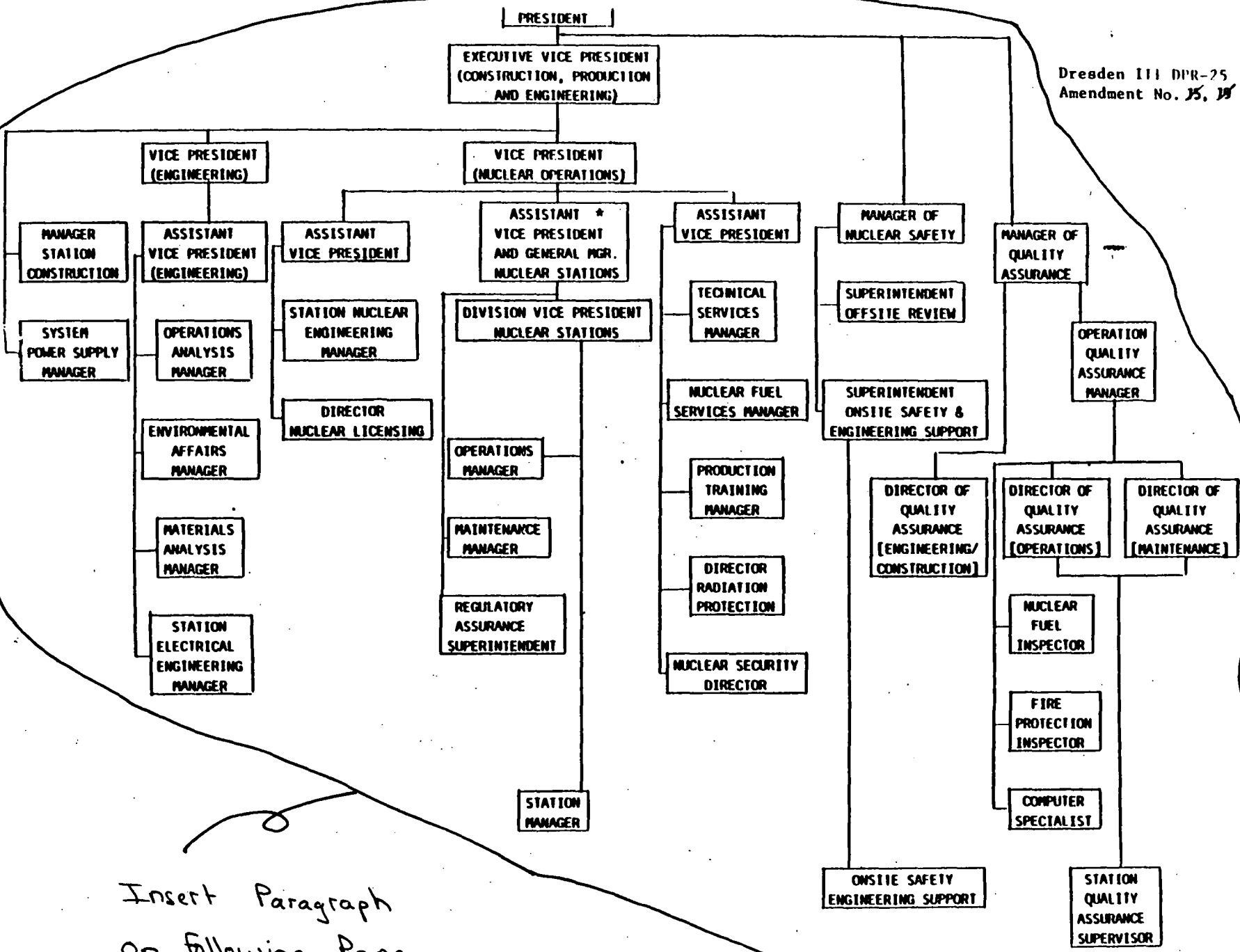
List of Figures

		<u>Page</u>
Figure 2.1-3	APRM Flow Bias Scram Relationship to Normal Operating Conditions	B 1/2.1-17
Figure 4.1.1	Graphical Aid in the Selection of an Adequate Interval Between Tests	B 3/4.1-18
Figure 4.2.2	Test Interval vs. System Unavailability	B 3/4.2-38
Figure 3.4.1	Standby Liquid Control Solution Requirements	3/4.4- 4
Figure 3.4.2	Sodium Pentaborate Solution Temperature Requirements	3/4.4- 5
Figure 3.5-1	MAPLHGR Limit vs Bundle Average Exposure ENC 8x8 Fuel (Sheet 1 of 6)	3/4.5-17
Figure 3.5-1	MAPLHGR Limit vs Bundle Average Exposure ENC 9x9 Fuel (Sheet 2 of 6)	3/4.5-18
Figure 3.5-1	MAPLHGR Limit vs Average Planar Exposure GE Fuel Type P8DRB265L (Sheet 3 of 6)	3/4.5-19
Figure 3.5-1	MAPLHGR Limit vs Average Planar Exposure GE Fuel Type P8DRB282 (Sheet 4 of 6)	3/4.5-20
Figure 3.5-1	MAPLHGR Limit vs Average Planar Exposure GE Fuel Type P8DRB265H (Sheet 5 of 6)	3/4.5-21
Figure 3.5-1	MAPLHGR Limit vs Average Planar Exposure GE 8x8 LTA - Bundle LY5458 (Sheet 6 of 6)	3/4.5-22
Figure 3.5-1A	Linear Heat Generation Rate vs Nodal Exposure	3/4.5-23
Figure 3.5-2	MCPR Limit for Reduced Total Core Flow (Sheet 1 of 3)	3/4.5-27
Figure 3.5-2	GE and Exxon 8x8 MCPR Operating Limit for Automatic Flow Control (Sheet 2 of 3)	3/4.5-28
Figure 3.5-2	Exxon 9x9 MCPR Operating Limit for Automatic Flow Control (Sheet 3 of 3)	3/4.5-29
Figure 3.6.1	Minimum Temperature Requirements per Appendix G of 10 CFR 50	3/4.6-23
Figure 3.6.2	Thermal Power vs Core Flow Limits for Thermal Hydraulic Stability Surveillance In Single Loop Operation	3/4.6-24
Figure 4.6.1	Minimum Reactor Pressurization Temperature	B 3/4.6-29
Figure 4.6.2	Chloride Stress Corrosion Test Results at 500°F	B 3/4.6-31
Figure 4.8-1	Owner Controlled/Unrestricted Area Boundary	B 3/4.8-38
Figure 4.8-2	Detail of Central Complex	B 3/4.8-39
Figure 6.1-1	Offsite Organization Figure Deleted	6-3
Figure 6.1-2	Station Organization Figure Deleted	6-4

6.0 ADMINISTRATIVE CONTROLS

6.1 Organization, Review, Investigation and Audit

- A. The Station Manager shall have overall full-time responsibility for safe operation of the facility. During periods when the Station Manager is unavailable, he shall designate this responsibility to an established alternate who satisfies the ANSI N18.1 of March 8, 1971 experience requirements for plant manager.
- B. The organization chart^S of the corporate management which relates to the operation of this station ~~is shown in Figure 6-1~~, and the normal functional organization chart for operation of the station ~~is~~ shown in Figures ~~6-1~~ 1-0 through 1-7 of the Commonwealth Edison Quality Assurance Manual.
- C. The shift manning for the station shall be as shown in Table 6.1.1. The Assistant Superintendent-Operating, Operating Engineer, Shift Engineers, and Shift Foreman shall have a Senior Operating License. The Fuel Handling Foreman has a limited Senior Operating License. The Assistant Vice President and General Manager - Nuclear Stations on the corporate level has responsibility for the Fire Protection Program. An Operating Engineer at the station will be responsible for implementation of the Fire Protection Program. A fire brigade of at least 5 members shall be maintained on-site at all times. This excludes the shift crew necessary for safe shutdown of the plant and any personnel required for essential functions during a fire emergency.
- D. Qualifications of the station management and operating staff shall meet minimum acceptable levels as described in ANSI N18.1, "Selection and Training of Nuclear Power Plant Personnel," dated March 8, 1971, with the exception of the Radiological-Chemical Supervisor who shall meet or exceed the qualifications of Radiation Protection Manager of Regulatory Guide 1.8, September, 1975, and the Shift Technical Advisor who shall have a bachelor's degree or equivalent in a scientific or engineering discipline with specific training in plant design and response and analysis of the plant for transients and accidents. The individual filling the position of Assistant Superintendent - Technical Services shall meet the minimum acceptable level for "Technical Manager" as described in 4.2.4 of ANSI N18.1 - 1971.
- E. Retraining and replacement training of Station personnel shall be in accordance with ANSI N18.1, "Selection and Training of Nuclear Power Plant Personnel," dated March 8, 1971.



Insert Paragraph
on following Page

Figure 6.1-1
OFFSITE ORGANIZATION

* Responsible For Fire Protection Program

THIS PAGE IS INTENTIONALLY BLANK.
THE OFFSITE ORGANIZATION CHART HAS BEEN
REPLACED BY REFERENCE TO THE CECO QUALITY
ASSURANCE MANUAL.

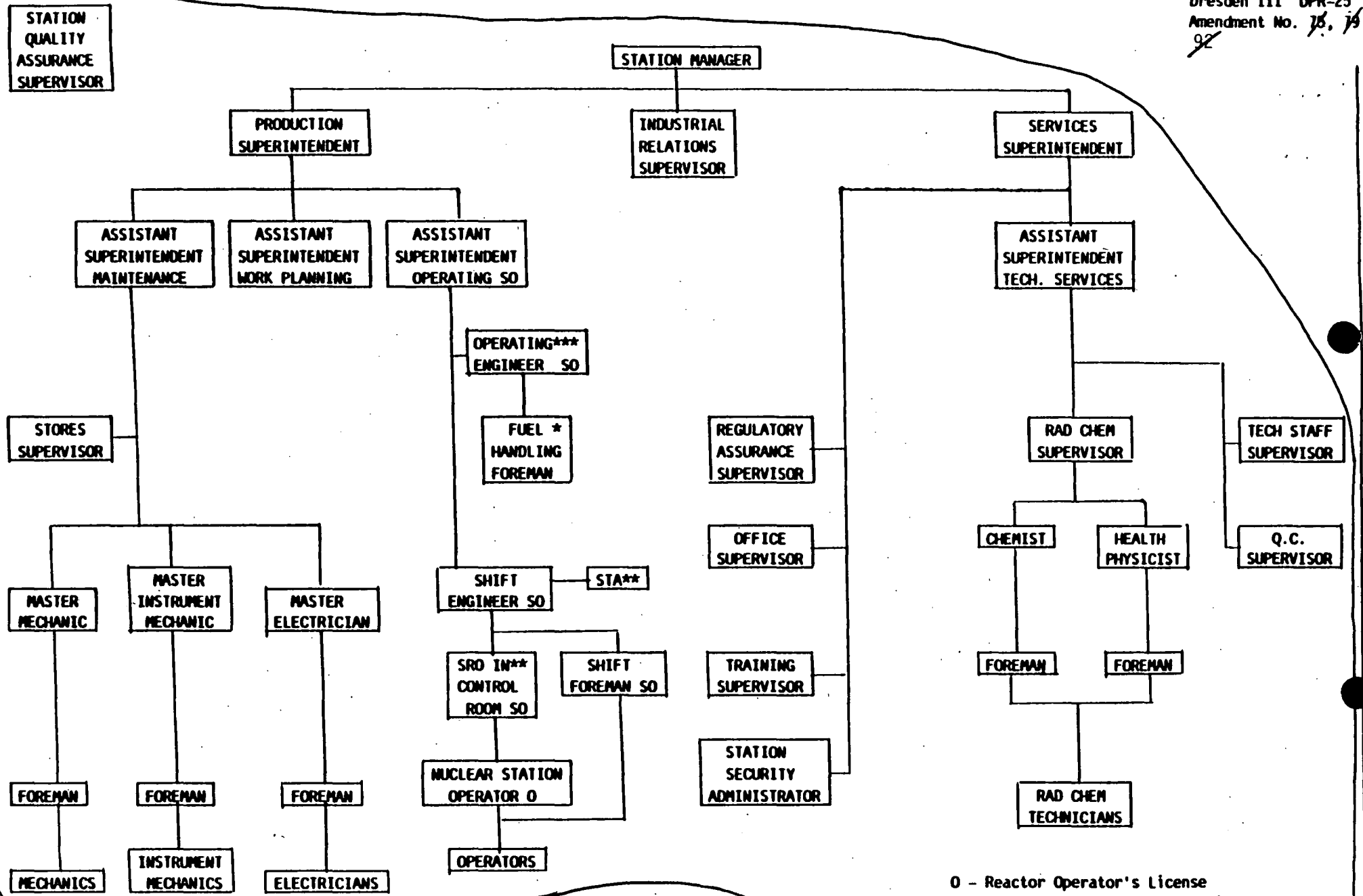


Figure 6.1-2

STATION ORGANIZATION

- O - Reactor Operator's License
- SO - Senior Reactor Operator's License
- * - Fuel Handling Foreman has SO or SO (Limited) Required only during fuel handling.
- ** - May be filled by a SCRE.
- *** - Responsible for Implementation of Fire Protection Program.

Insert Paragraph
 On Following Page

THIS PAGE IS INTENTIONALLY BLANK.
THE STATION ORGANIZATION CHART HAS BEEN
REPLACED BY REFERENCE TO THE CECO QUALITY
ASSURANCE MANUAL.

List of Figures

		<u>Page</u>
Figure 2.1-3	APRM Bias Scram Relationship to Normal Operating Conditions	B 1/2.1-17
Figure 4.1.1	Graphical Aid in the Selection of an Adequate Interval Between Tests	B 3/4.1-18
Figure 4.2.2	Test Interval vs. System Unavailability	B 3/4.2-38
Figure 3.4.1	Standby Liquid Control Solution Requirements	3/4.4-4
Figure 3.4.2	Sodium Pentaborate Solution Temperature Requirements	3/4.4-5
Figure 3.5-1	MAPLHGR Limit vs Bundle Average Exposure ANF 8x8 Fuel (Sheet 1 of 2)	3/4.5-18
Figure 3.5-1	MAPLHGR Limit vs Bundle Average Exposure ANF 9x9 Fuel (Sheet 2 of 2)	3/4.5-19
Figure 3.5-1A	Steady State Linear Heat Generation Rate vs Nodal Exposure	3/4.5-20
Figure 3.5-1B	Transient Linear Heat Generation Rate vs Nodal Exposure	3/4.5-21
Figure 3.5-2	MCPR LIMIT for Reduced Total Core Flow (Sheet 1 of 3)	3/4.5-25
Figure 3.5-2	8x8 MCPR Operating Limit for Automatic Flow Control (Sheet 2 of 3)	3/4.5-26
Figure 3.5-2	9x9 MCPR Operating Limit for Automatic Flow Control (Sheet 3 of 3)	3/4.5-27
Figure 3.6.1	Minimum Temperature Requirements per Appendix G of 10 CFR 50	3/4.6-23
Figure 3.6.2	Thermal Power vs Core Flow Limits for Thermal Hydraulic Stability Surveillance In Single Loop Operation	3/4.6-24
Figure 4.6.1	Minimum Reactor Pressurization Temperature	B 3/4.6-29
Figure 4.6.2	Chloride Stress Corrosion Test Results at 500°F	B 3/4.6-31
Figure 4.8-1	Owner Controlled/Unrestricted Area Boundary	B 3/4.8-38
Figure 4.8-2	Detail of Central Complex	B 3/4.8-39
Figure 6.1-1	Offsite Organization Figure Deleted	6-3
Figure 6.1-2	Station Organization Figure Deleted	6-4

ATTACHMENT 2

SUMMARY OF CHANGES

FOR DRESDEN STATION, UNITS 2 AND 3

FACILITY OPERATING LICENSES DPR-19 AND DPR-25

A total of sixteen (16) changes to the Dresden Station Unit 2 and 3 Technical Specifications have been identified. These changes are considered to be administrative in nature and are listed below as follows:

- 1) Page 6-1/ Paragraph 6.1.B -
 - a) Line 1 "chart" changed to "charts".
 - b) Line 2 "relates" changed to "relate".
 - c) Line 2-3 "is shown in Figure 6.1-1" removed.
 - d) Line 4 "is shown in Figure 6.1-2." changed to "are shown in Figures 1-0 through 1-7 of the Commonwealth Edison Quality Assurance Manual".

- 2) Page 6-3/ Figure 6.1-1 -
 - a) Figure 6.1-1 has been deleted and the following statement has been added: "This page is intentionally blank. The offsite organization chart has been replaced by reference to the CECO Quality Assurance Manual."

- 3) Page 6-4/ Figure 6.1-2 -
 - a) Figure 6.1-2 has been deleted and the following statement has been added: "This page is intentionally blank. The station organization chart has been replaced by reference to the CECO Quality Assurance Manual."

- 4) Page viii/ List of Figures -
 - a) Figure 6.1-1 "Offsite Organization" changed to read "Figure Deleted".
 - b) Figure 6.1-2 "Station Organization" changed to read "Figure Deleted".

ATTACHMENT 3

DESCRIPTION OF PROPOSED AMENDMENT REQUEST
FOR DRESDEN STATION, UNITS 2 AND 3

The changes requested are purely administrative in nature. An item by item description of the proposed changes requested as part of this amendment is provided for information and use. Attachment 2 can be referred to in order to reference back to a given change and its affected page.

Item 1 -

- a) Reference is being made to various charts instead of a singular chart.
- b) Grammatical correction.
- c,d) The proposed change removes the organization charts from the Technical Specifications. A new reference is being added to refer to the Commonwealth Edison Company Corporate Quality Assurance Manual.

Item 2 and 3 -

The proposed change removes the organization charts since the appropriate charts are already contained in the Commonwealth Edison Company Corporate Quality Assurance Manual.

Item 4 -

The proposed change removes the organization charts from the List of Figures.