

ATTACHMENT 1

PROPOSED CHANGES TO APPENDIX A
TECHNICAL SPECIFICATIONS

Attachment 1a: DRESDEN STATION UNITS 2 AND 3

Attachment 1b: QUAD CITIES STATION UNITS 1 AND 2

Attachment 1c: LASALLE COUNTY STATION UNITS 1 AND 2

8810190274 881005
PIR ADOCK 05000237
P PIC

ATTACHMENT 1a

PROPOSED CHANGES TO APPENDIX A
TECHNICAL SPECIFICATIONS FOR
DRESDEN STATION UNITS 2 AND 3

FACILITY OPERATING LICENSES DPR-19 AND DPR-25

<u>Revised Pages:</u>	6-1	(DPR - 19)
	6-3	(DPR - 19)
	viii	(DPR - 19)
	6-1	(DPR - 25)
	6-3	(DPR - 25)
	viii	(DPR - 25)

6.0 ADMINISTRATIVE CONTROLS

6.1 Organization, Review, Investigation and Audit

- A. The Station Superintendent shall have overall full-time responsibility for safe operation of the facility. During periods when the Station Superintendent is unavailable, he shall designate this responsibility to an established alternate who satisfies the ANSI N18.1 of March 8, 1971 experience requirements for plant manager.
- B. The organization charts of the corporate management which relate to the operation of this station and the normal functional organization chart for operation of the station are shown in Figures 1-0 thru 1-7 of the Commonwealth Edison Quality Assurance Manual.
- C. The shift manning for the station shall be as shown in Table 6.1.1. The Operating Assistant Superintendent, Operating Engineer, Shift Engineers, and Shift Foreman shall have a Senior Operating License. The Fuel Handling Foreman has a limited Senior Operating License. The Division Vice President Nuclear Stations on the corporate level has responsibility for the Fire Protection Program. An Operating Engineer at the station will be responsible for implementation of the Fire Protection Program. A fire brigade of at least 5 members shall be maintained on-site at all times. This excludes the shift crew necessary for safe shutdown of the plant and any personnel required for essential functions during a fire emergency.
- D. Qualifications of the station management and operating staff shall meet minimum acceptable levels as described in ANSI N18.1, "Selection and Training of Nuclear Power Plant Personnel," dated March 8, 1971, with the exception of the Radiological-Chemical Supervisor who shall meet or exceed the qualifications of Radiation Protection Manager of Regulatory Guide 1.8, September, 1975, and the Shift Technical Advisor shall have a bachelor's degree or equivalent in a scientific or engineering discipline with specific training in plant design and response and analysis of the plant for transients and accidents. The individual filling the position of Administrative and Support Services Assistant Superintendent shall meet the minimum acceptable level for "Technical Manager" as described in 4.2.4 of ANSI N18.1 - 1971.
- E. Retraining and replacement training of Station personnel shall be in accordance with ANSI N18.1, "Selection and Training of Nuclear Power Plant Personnel," dated March 8, 1971.

FIGURE DELETED

List of Figures

		<u>Page</u>
Figure 2.1-3	APRM Flow Bias Scram Relationship to Normal Operating Conditions	B 1/2.1-17
Figure 4.1.1	Graphical Aid in the Selection of an Adequate Interval Between Tests	B 3/4.1-18
Figure 4.2.2	Test Interval vs. System Unavailability	B 3/4.2-38
Figure 3.4.1	Standby Liquid Control Solution Requirements	3/4.4- 4
Figure 3.4.2	Sodium Pentaborate Solution Temperature Requirements	3/4.4- 5
Figure 3.5-1	MAPLHGR Limit vs Bundle Average Exposure ENC 8x8 Fuel (Sheet 1 of 6)	3/4.5-17
Figure 3.5-1	MAPLHGR Limit vs Bundle Average Exposure ENC 9x9 Fuel (Sheet 2 of 6)	3/4.5-18
Figure 3.5-1	MAPLHGR Limit vs Average Planar Exposure GE Fuel Type P8DRB265L (Sheet 3 of 6)	3/4.5-19
Figure 3.5-1	MAPLHGR Limit vs Average Planar Exposure GE Fuel Type P8DRB282 (Sheet 4 of 6)	3/4.5-20
Figure 3.5-1	MAPLHGR Limit vs Average Planar Exposure GE Fuel Type P8DRB265H (Sheet 5 of 6)	3/4.5-21
Figure 3.5-1	MAPLHGR Limit vs Average Planar Exposure GE 8x8 LTA - Bundle LY5458 (Sheet 6 of 6)	3/4.5-22
Figure 3.5-1A	Linear Heat Generation Rate vs Nodal Exposure	3/4.5-23
Figure 3.5-2	M CPR Limit for Reduced Total Core Flow (Sheet 1 of 3)	3/4.5-27
Figure 3.5-2	GE and Exxon 8x8 M CPR Operating Limit for Automatic Flow Control (Sheet 2 of 3)	3/4.5-28
Figure 3.5-2	Exxon 9x9 M CPR Operating Limit for Automatic Flow Control (Sheet 3 of 3)	3/4.5-29
Figure 3.6.1	Minimum Temperature Requirements per Appendix G of 10 CFR 50	3/4.6-23
Figure 3.6.2	Thermal Power vs Core Flow Limits for Thermal Hydraulic Stability Surveillance In Single Loop Operation	3/4.6-24
Figure 4.6.1	Minimum Reactor Pressurization Temperature	B 3/4.6-29
Figure 4.6.2	Chloride Stress Corrosion Test Results at 500°F	B 3/4.6-31
Figure 4.8-1	Owner Controlled/Unrestricted Area Boundary	B 3/4.8-38
Figure 4.8-2	Detail of Central Complex	B 3/4.8-39
Figure 6.1-1	Figure Deleted	6-3

6.0 ADMINISTRATIVE CONTROLS

6.1 Organization, Review, Investigation and Audit

- A. The Station Superintendent shall have overall full-time responsibility for safe operation of the facility. During periods when the Station Superintendent is unavailable, he shall designate this responsibility to an established alternate who satisfies the ANSI N18.1 of March 8, 1971 experience requirements for plant manager.
- B. The organizational charts of the corporate management which relate to the operation of this station and the normal functional organizational chart for the operation of the station are shown in Figures 1-0 through 1-7 of the Commonwealth Edison Quality Assurance Manual.
- C. The shift manning for the station shall be as shown in Table 6.1.1. The Operating Assistant Superintendent, Operating Engineer, Shift Engineers, and Shift Foreman shall have a Senior Operating License. The Fuel Handling Foreman has a limited Senior Operating License. The Division Vice President Nuclear Stations on the corporate level has responsibility for the Fire Protection Program. An Operating Engineer at the station will be responsible for implementation of the Fire Protection Program. A fire brigade of at least 5 members shall be maintained on-site at all times. This excludes the shift crew necessary for safe shutdown of the plant and any personnel required for essential functions during a fire emergency.
- D. Qualifications of the station management and operating staff shall meet minimum acceptable levels as described in ANSI N18.1, "Selection and Training of Nuclear Power Plant Personnel," dated March 8, 1971, with the exception of the Radiological-Chemical Supervisor who shall meet or exceed the qualifications of Radiation Protection Manager of Regulatory Guide 1.8, September, 1975, and the Shift Technical Advisor who shall have a bachelor's degree or equivalent in a scientific or engineering discipline with specific training in plant design and response and analysis of the plant for transients and accidents. The individual filling the position of Administrative and Support Services Assistant Superintendent shall meet the minimum acceptable level for "Technical Manager" as described in 4.2.4 of ANSI N18.1 - 1971.
- E. Retraining and replacement training of Station personnel shall be in accordance with ANSI N18.1, "Selection and Training of Nuclear Power Plant Personnel," dated March 8, 1971.

FIGURE DELETED

List of Figures

		<u>Page</u>
Figure 2.1-3	APRM Bias Scram Relationship to Normal Operating Conditions	B 1/2.1-17
Figure 4.1.1	Graphical Aid in the Selection of an Adequate Interval Between Tests	B 3/4.1-18
Figure 4.2.2	Test Interval vs. System Unavailability	B 3/4.2-38
Figure 3.4.1	Standby Liquid Control Solution Requirements	3/4.4- 4
Figure 3.4.2	Sodium Pentaborate Solution Temperature Requirements	3/4.4- 5
Figure 3.5-1	MAPLHGR Limit vs Bundle Average Exposure ENC 8x8 Fuel (Sheet 1 of 5)	3/4.5-17
Figure 3.5-1	MAPLHGR Limit vs Bundle Average Exposure ENC 9x9 Fuel (Sheet 2 of 5)	3/4.5-18
Figure 3.5-1	MAPLHGR Limit vs Average Planar Exposure GE Fuel Type P8DRB265L (Sheet 3 of 5)	3/4.5-19
Figure 3.5-1	MAPLHGR Limit vs Average Planar Exposure GE Fuel Type P8DRB282 (Sheet 4 of 5)	3/4.5-20
Figure 3.5-1	MAPLHGR Limit vs Average Planar Exposure GE Fuel Type P8DRB265H (Sheet 5 of 5)	3/4.5-21
Figure 3.5-1A	Linear Heat Generation Rate vs Nodal Exposure	3/4.5-22
Figure 3.5-2	MCPR Limit for Reduced Total Core Flow (Sheet 1 of 3)	3/4.5-26
Figure 3.5-2	8x8 MCPR Operating Limit for Automatic Flow Control (Sheet 2 of 3)	3/4.5-27
Figure 3.5-2	9x9 MCPR Operating Limit for Automatic Flow Control (Sheet 3 of 3)	3/4.5-28
Figure 3.6.1	Minimum Temperature Requirements per Appendix G of 10 CFR 50	3/4.6-23
Figure 3.6.2	Thermal Power vs Core Flow Limits for Thermal Hydraulic Stability Surveillance In Single Loop Operation	3/4.6-24
Figure 4.6.1	Minimum Reactor Pressurization Temperature	B 3/4.6-29
Figure 4.6.2	Chloride Stress Corrosion Test Results at 500°F	B 3/4.6-31
Figure 4.8-1	Owner Controlled/Unrestricted Area Boundary	B 3/4.8-38
Figure 4.8-2	Detail of Central Complex	B 3/4.8-39
Figure 6.1-1	Figure Deleted	6- 3

ATTACHMENT 1b

PROPOSED CHANGES TO APPENDIX A
TECHNICAL SPECIFICATIONS FOR
QUAD CITIES STATION UNITS 1 AND 2

FACILITY OPERATING LICENSES DPR-29 AND DPR-30

<u>Revised Pages:</u>	6.1 - 1	(DPR - 29)
	Figure 6.1 - 1	(DPR - 29)
	Figure 6.1 - 2	(DPR - 29)
	6.1 - 1	(DPR - 30)
	Figure 6.1 - 1	(DPR - 30)
	Figure 6.1 - 2	(DPR - 30)

6.0 ADMINISTRATIVE CONTROLS

6.1 ORGANIZATION, REVIEW, INVESTIGATION, AND AUDIT

- A. The Station Manager shall have overall full-time responsibility for safe operation of the facility. During periods when the Station Manager is unavailable, he shall designate this responsibility to an established alternate who satisfies the ANSI N18.1 of March 8, 1971 experience requirements for plant manager.
- B. The organization chart of corporate management, which relates to the operation of this station, and the normal functional organization chart for operation of the station are shown in the Commonwealth Edison Quality Assurance Manual.
- C. The shift manning for the station shall be as shown in Figure 6.1-3. The Assistant Superintendent Operating, Operating Engineer, Shift Engineers, and Shift Foremen shall have a Senior Operator's License. The Fuel Handling Foreman has a limited Senior Operator's License. The Assistant Vice President and General Manager Nuclear Stations on the corporate level has responsibility for the Fire Protection Program. The Assistant Superintendent Maintenance will be responsible for implementation of the Fire Protection Program. A fire brigade of at least 5 members shall be maintained on-site at all times. This excludes the shift crew necessary for safe shutdown of the plant, and any personnel required for other essential functions during a fire emergency.
- D. Qualifications of the station management and operating staff, excluding the Rad-Chem supervisor and the Radiation/Chemical Technicians, shall meet minimum acceptable levels as described in ANSI N18.1, "Selection and Training of Nuclear Power Plant Personnel", dated March 8, 1971. The Rad-Chem Supervisor or the Lead Health Physicist shall meet the requirements of radiation protection manager of Regulatory Guide 1.8. The individual filling the position of Assistant Superintendent - Technical Services shall meet the minimum acceptable level for "Technical Manager" as described in Section 4.2.4 of ANSI N18.1-1971. The Shift Technical Advisor shall have a bachelor's degree or equivalent in a scientific or engineering discipline with specific training in plant design, and response and analysis of the plant for transients and accidents.

The Radiation/Chemical Technicians shall have successfully completed the established Radiation/Chemical Technician training program, and shall have at least a total of one year of general power plant, chemical, or radiation protection experience, or equivalent training. The Radiation/Chemical Technicians shall meet the criteria for "Individuals Qualified in Radiation Protection Procedures", as described in the D.L. Ziemann (NRC) letter to R. L. Bolger (CECo.) dated March 15, 1977. The Radiation/Chemical Technician training program consists of the following:

1. Satisfactory completion of a 12-week academic program. Topics of this course include mathematics, nuclear physics, radioactive decay, chemistry, sampling techniques, reactor coolant parameters, radiation exposure, shielding, biological effects of radiation exposure, radiation survey techniques, personnel monitoring, and emergency procedures.
 2. Satisfactory performance on a comprehensive examination following completion of academic training.
 3. On-Shift training under the supervision of a qualified Radiation/Chemical Technician.
- E. Retraining and replacement training of Station personnel shall be in accordance with ANSI N18.1, "Selection and Training of Nuclear Power Plant Personnel", dated March 8, 1971.

A training program for the fire brigade shall be maintained under the direction of the Station Fire Marshal and shall meet or exceed the requirements of Section 27 of the NFPA Code-1975 except that training sessions shall be at least quarterly.

- F. Retraining for licensed operators, senior operators, and senior operators (limited) shall be conducted at intervals not exceeding 2 years.
- G. The Review and Investigative Function and the Audit Function of activities affecting quality during facility operations shall be constituted and have the responsibilities and authorities outlined below:
 1. The Supervisor of the Offsite Review and Investigative Function shall be appointed by the Chairman and President. The Audit Function shall be the responsibility of the Manager of Quality Assurance and shall be independent of operations.

THIS PAGE IS INTENTIONALLY BLANK.
THE CORPORATE ORGANIZATION CHART HAS BEEN
REMOVED FROM TECHNICAL SPECIFICATIONS AND
REPLACED BY REFERENCE TO THE CECO QUALITY
ASSURANCE MANUAL.

FIGURE 6.1-1
CORPORATE ORGANIZATION

Amendment No.

0763B

THIS PAGE IS INTENTIONALLY BLANK.
THE STATION ORGANIZATION CHART HAS BEEN
REPLACED BY REFERENCE TO THE CECO QUALITY
ASSURANCE MANUAL.

QUAD CITIES STATION ORGANIZATION
FIGURE 6.1-2

Amendment No.

0763B

6.0 ADMINISTRATIVE CONTROLS

6.1 ORGANIZATION, REVIEW, INVESTIGATION, AND AUDIT

- A. The Station Manager shall have overall full-time responsibility for safe operation of the facility. During periods when the Station Manager is unavailable, he shall designate this responsibility to an established alternate who satisfies the ANSI N18.1 of March 8, 1971 experience requirements for plant manager.
- B. The organization chart of corporate management, which relates to the operation of this station, and the normal functional organization chart for operation of the station are shown in the Commonwealth Edison Quality Assurance Manual.
- C. The shift manning for the station shall be as shown in Figure 6.1-3. The Assistant Superintendent Operating, Operating Engineer, Shift Engineers, and Shift Foremen shall have a Senior Operator's License. The Fuel Handling Foreman has a limited Senior Operator's License. The Assistant Vice President and General Manager Nuclear Stations on the corporate level has responsibility for the Fire Protection Program. The Assistant Superintendent Maintenance will be responsible for implementation of the Fire Protection Program. A fire brigade of at least 5 members shall be maintained on-site at all times. This excludes the shift crew necessary for safe shutdown of the plant, and any personnel required for other essential functions during a fire emergency.
- D. Qualifications of the station management and operating staff, excluding the Rad-Chem supervisor and the Radiation/Chemical Technicians, shall meet minimum acceptable levels as described in ANSI N18.1, "Selection and Training of Nuclear Power Plant Personnel", dated March 8, 1971. The Rad-Chem Supervisor or the Lead Health Physicist shall meet the requirements of radiation protection manager of Regulatory Guide 1.8. The individual filling the position of Assistant Superintendent - Technical Services shall meet the minimum acceptable level for "Technical Manager" as described in Section 4.2.4 of ANSI N18.1-1971. The Shift Technical Advisor shall have a bachelor's degree or equivalent in a scientific or engineering discipline with specific training in plant design, and response and analysis of the plant for transients and accidents.

The Radiation/Chemical Technicians shall have successfully completed the established Radiation/Chemical Technician training program, and shall have at least a total of one year of general power plant, chemical, or radiation protection experience, or equivalent training. The Radiation/Chemical Technicians shall meet the criteria for "Individuals Qualified in Radiation Protection Procedures", as described in the D.L. Ziemann (NRC) letter to R. L. Bolger (CECo.) dated March 15, 1977. The Radiation/Chemical Technician training program consists of the following:

- 1. Satisfactory completion of a 12-week academic program. Topics of this course include mathematics, nuclear physics, radioactive decay, chemistry, sampling techniques, reactor coolant parameters, radiation exposure, shielding, biological effects of radiation exposure, radiation survey techniques, personnel monitoring, and emergency procedures.
 - 2. Satisfactory performance on a comprehensive examination following completion of academic training.
 - 3. On-Shift training under the supervision of a qualified Radiation/Chemical Technician.
- E. Retraining and replacement training of Station personnel shall be in accordance with ANSI N18.1, "Selection and Training of Nuclear Power Plant Personnel", dated March 8, 1971.

A training program for the fire brigade shall be maintained under the direction of the Station Fire Marshal and shall meet or exceed the requirements of Section 27 of the NFPA Code-1975 except that training sessions shall be at least quarterly.

- F. Retraining for licensed operators, senior operators, and senior operators (limited) shall be conducted at intervals not exceeding 2 years.
- G. The Review and Investigative Function and the Audit Function of activities affecting quality during facility operations shall be constituted and have the responsibilities and authorities outlined below:
 - 1. The Supervisor of the Offsite Review and Investigative Function shall be appointed by the Chairman and President. The Audit Function shall be the responsibility of the Manager of Quality Assurance and shall be independent of operations.

THIS PAGE IS INTENTIONALLY BLANK.
THE CORPORATE ORGANIZATION CHART HAS BEEN
REMOVED FROM TECHNICAL SPECIFICATIONS AND
REPLACED BY REFERENCE TO THE CECO QUALITY
ASSURANCE MANUAL.

FIGURE 6.1-1
CORPORATE ORGANIZATION

Amendment No.

0763B

THIS PAGE IS INTENTIONALLY BLANK.
THE STATION ORGANIZATION CHART HAS BEEN
REPLACED BY REFERENCE TO THE CECO QUALITY
ASSURANCE MANUAL.

QUAD CITIES STATION ORGANIZATION
FIGURE 6.1-2

Amendment No.

0763B

ATTACHMENT 1c

PROPOSED CHANGES TO APPENDIX A
TECHNICAL SPECIFICATIONS FOR
LASALLE COUNTY STATION UNITS 1 AND 2

FACILITY OPERATING LICENSES NPF-11 AND NPF-18

<u>Revised Pages:</u>	6 - 1	(NPF - 11)
	6 - 11	(NPF - 11)
	6 - 12	(NPF - 11)
	6 - 1	(NPF - 18)
	6 - 11	(NPF - 18)
	6 - 12	(NPF - 18)

6.0 ADMINISTRATIVE CONTROLS

6.1 ORGANIZATION, REVIEW, INVESTIGATION, AND AUDIT

- A. The Station Manager shall have overall full-time responsibility for safe operation of the facility. During periods when the Station Manager is unavailable, he shall designate this responsibility to an established alternate who satisfies the ANSI N18.1 of March 8, 1971 experience requirements for plant manager.

The Shift Supervisor shall be responsible for directing and commanding the overall operation of the facility on his shift. The primary management responsibility of the Shift Supervisor shall be for safe operation of the nuclear facility on his shift under all conditions. A management directive signed by Assistant Vice President and General Manager - Nuclear Stations emphasizing this primary management responsibility and that clearly establishes the command duties of the Shift Supervisor shall be reissued to all station personnel on an annual basis.

- B. The corporate management which relates to the operation of this station is shown in Figure 6.1-1.

- C. The normal functional organization for operation of the station shall be as shown in Figure 6.1-2. The shift manning for the station shall be as shown in Figure 6.1-3. The individual filling the position of Assistant Superintendent Technical Services shall meet the minimum acceptable level for "Technical Manager" as described in Section 4.2.4 of ANSI N18.1-1971. The individuals filling the positions of Production Superintendent and Services Superintendent shall meet the minimum acceptable level for "Plant Manager" as described in Section 4.2.1 of ANSI N18.1-1971.

1. At least one licensed Reactor Operator shall be in the control room when fuel is in the reactor. In addition, while the reactor is in OPERATIONAL CONDITION 1, 2 or 3, at least one licensed Senior Reactor Operator who has been designated by the Shift Supervisor to assume the control room direction responsibility shall be in the Control Room.
2. A health physics technician* shall be on site when fuel is in the reactor.
3. All CORE ALTERATIONS shall be observed and directly supervised by either a licensed Senior Reactor Operator or Senior Reactor Operator Limited to Fuel Handling who has no other concurrent responsibilities during this operation.
4. A site Fire Brigade of at least 5 members shall be maintained onsite at all times*. The Fire Brigade shall not include the Shift Supervisor, the Station Control Room Engineer and the 2 other members of the minimum shift crew necessary for safe shutdown of the unit and any personnel required for other essential functions during a fire emergency.

*The health physics technician and Fire Brigade composition may be less than the minimum requirements for a period of time not to exceed two hours in order to accommodate unexpected absence provided immediate action is taken to fill the required positions.

OSR 87-044
July 26, 1987

INSERT

- B. The corporate management organization which relates to the operation of LaSalle Station and the normal functional organization for operation of the station are described in Section No. 1 of the Commonwealth Edison Company Topical Report CE-1-A.

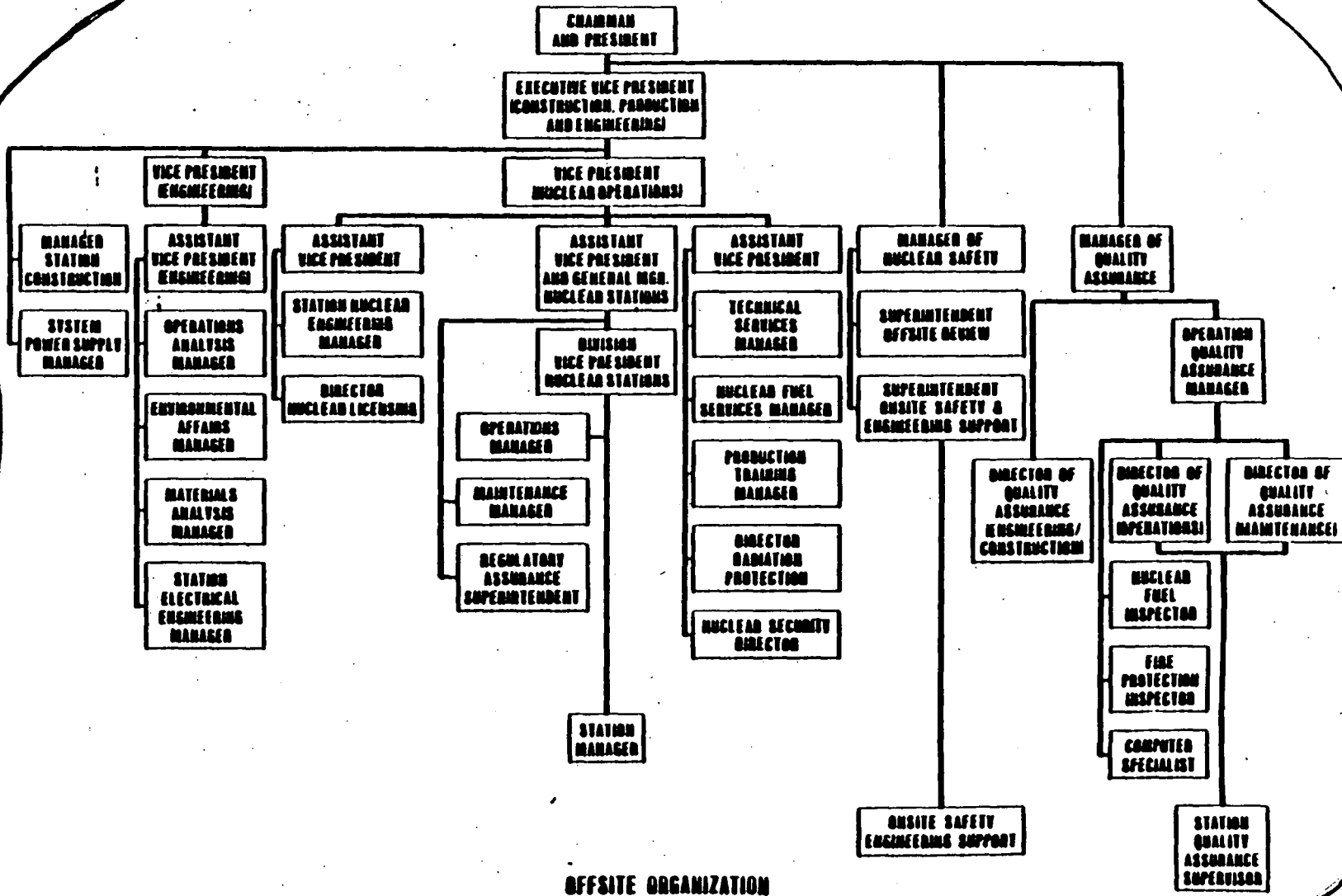


FIGURE 6.1-1

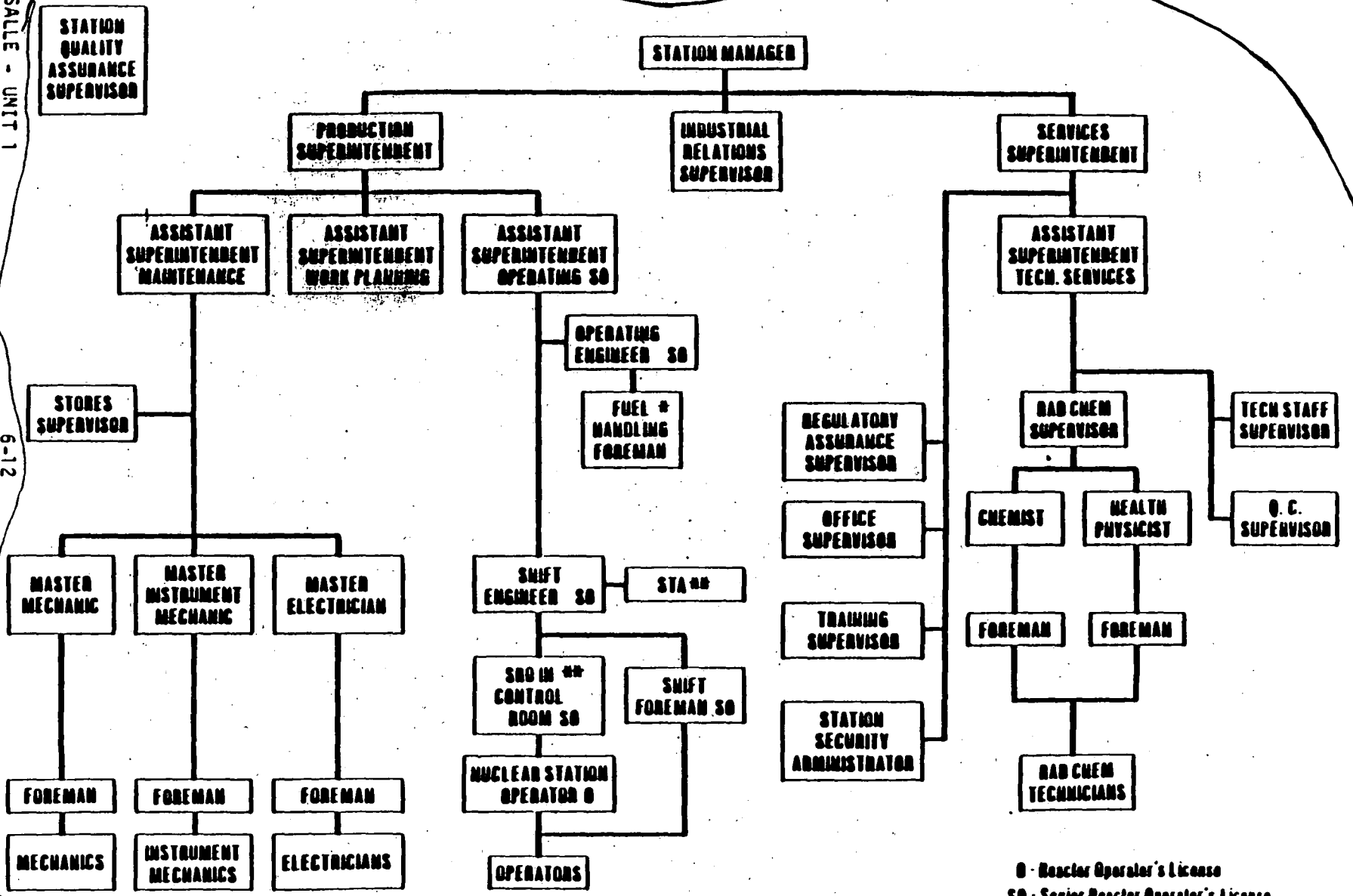
This page intentionally left blank

This page in ten monthly left blank.

LA SALLE - UNIT 1

6-12

Amendment No. 47



STATION ORGANIZATION

FIGURE 6.1-2

O - Reactor Operator's License
 SO - Senior Reactor Operator's License
 * - Fuel Handling Foreman has SO or SO Limited. Required only during fuel handling.
 ** - May be filled by a SCRE.

6.0 ADMINISTRATIVE CONTROLS

6.1 ORGANIZATION, REVIEW, INVESTIGATION, AND AUDIT

- A. The Station Manager shall have overall full-time responsibility for safe operation of the facility. During periods when the Station Manager is unavailable, he shall designate this responsibility to an established alternate who satisfies the ANSI N18.1 of March 8, 1971 experience requirements for plant manager.

The Shift Supervisor shall be responsible for directing and commanding the overall operation of the facility on his shift. The primary management responsibility of the Shift Supervisor shall be for safe operation of the nuclear facility on his shift under all conditions. A management directive signed by Assistant Vice President and General Manager - Nuclear Stations emphasizing this primary management responsibility and that clearly establishes the command duties of the Shift Supervisor shall be reissued to all station personnel on an annual basis.

- B. The corporate management which relates to the operation of this station is shown in Figure 6.1-1.

The normal functional organization for operation of the station shall be as shown in Figure 6.1-2. The shift manning for the station shall be as shown in Figure 6.1-3. The individual filling the position of Assistant Superintendent Technical Services shall meet the minimum acceptable level for "Technical Manager" as described in Section 4.2.4 of ANSI N18.1-1971. The individuals filling the positions of Production Superintendent and Services Superintendent shall meet the minimum acceptable level for "Plant Manager" as described in Section 4.2.1 of ANSI N18.1-1971.

1. At least one licensed Reactor Operator shall be in the control room when fuel is in the reactor. In addition, while the reactor is in OPERATIONAL CONDITION 1, 2 or 3, at least one licensed Senior Reactor Operator who has been designated by the Shift Supervisor to assume the control room direction responsibility shall be in the Control Room.
2. A health physics technician* shall be on site when fuel is in the reactor.
3. All CORE ALTERATIONS shall be observed and directly supervised by either a licensed Senior Reactor Operator or Senior Reactor Operator Limited to Fuel Handling who has no other concurrent responsibilities during this operation.
4. A site Fire Brigade of at least 5 members shall be maintained onsite at all times*. The Fire Brigade shall not include the Shift Supervisor, the Station Control Room Engineer and the 2 other members of the minimum shift crew necessary for safe shutdown of the unit and any personnel required for other essential functions during a fire emergency.

* The health physics technician and Fire Brigade composition may be less than the minimum requirements for a period of time not to exceed two hours in order to accommodate unexpected absence provided immediate action is taken to fill the required positions.

*Insert
Paragraph on
Following Page C.*

OSR 87-044
July 26, 1987

INSERT

- B. The corporate management organization which relates to the operation of LaSalle Station and the normal functional organization for operation of the station are described in Section No. 1 of the Commonwealth Edison Company Topical Report CE-1-A.

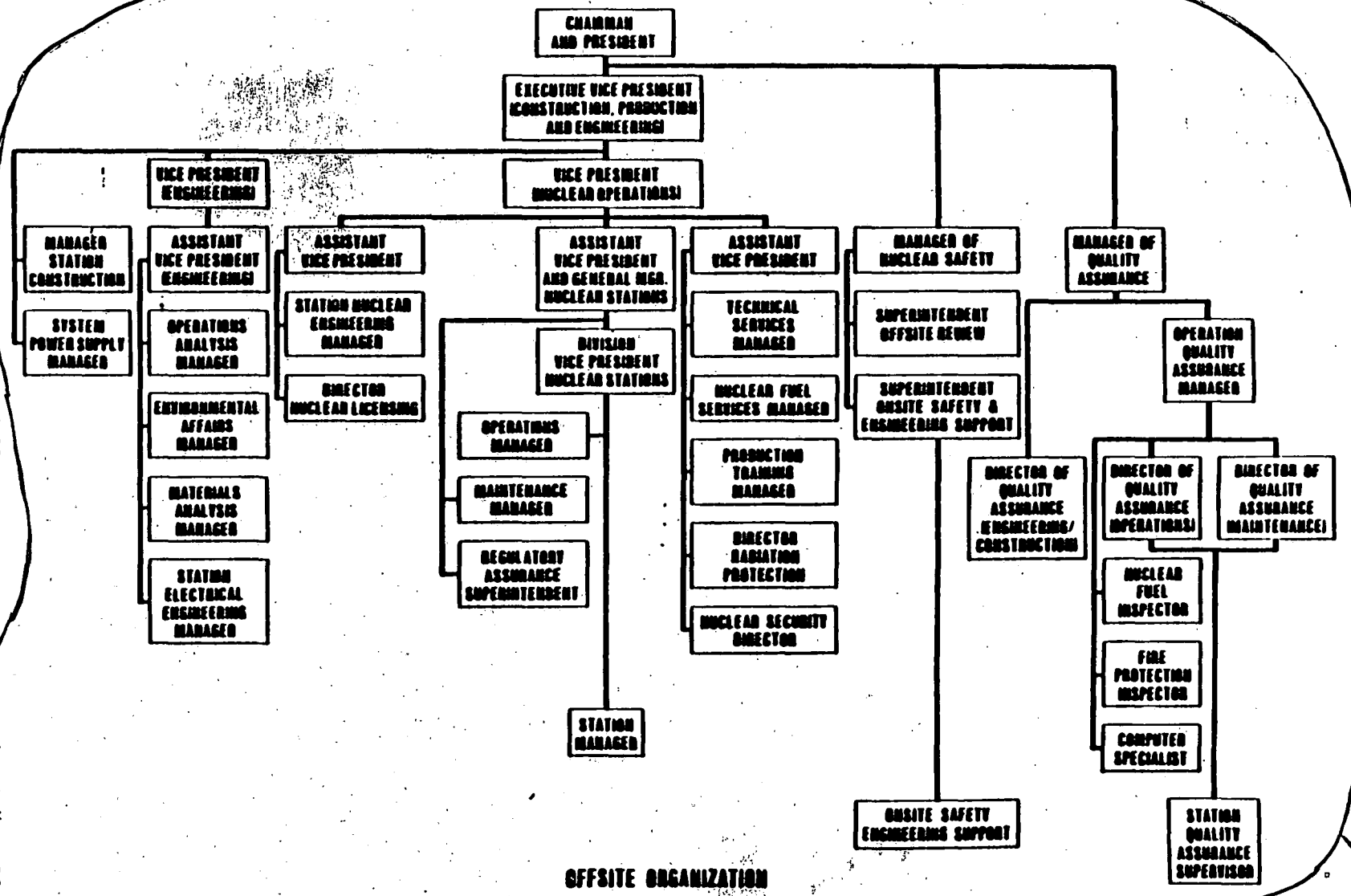


FIGURE 6.1-1

This page is functionally left blank

OFFSITE ORGANIZATION

STATION QUALITY ASSURANCE SUPERVISOR

STATION MANAGER

PRODUCTION SUPERINTENDENT

INDUSTRIAL RELATIONS SUPERVISOR

SERVICES SUPERINTENDENT

ASSISTANT SUPERINTENDENT MAINTENANCE

ASSISTANT SUPERINTENDENT WORK PLANNING

ASSISTANT SUPERINTENDENT OPERATING SO

ASSISTANT SUPERINTENDENT TECH. SERVICES

STORES SUPERVISOR

OPERATING ENGINEER SO

FUEL * HANDLING FOREMAN

REGULATORY ASSURANCE SUPERVISOR

RAD CHEM SUPERVISOR

TECH STAFF SUPERVISOR

OFFICE SUPERVISOR

CHEMIST

HEALTH PHYSICIST

O. C. SUPERVISOR

MASTER MECHANIC

MASTER INSTRUMENT MECHANIC

MASTER ELECTRICIAN

SHIFT ENGINEER SO

STA **

TRAINING SUPERVISOR

FOREMAN

FOREMAN

FOREMAN

FOREMAN

FOREMAN

SRO IN ** CONTROL ROOM SO

SHIFT FOREMAN SO

STATION SECURITY ADMINISTRATOR

RAD CHEM TECHNICIANS

MECHANICS

INSTRUMENT MECHANICS

ELECTRICIANS

NUCLEAR STATION OPERATOR O

OPERATORS

STATION ORGANIZATION

- O - Reactor Operator's License
- SO - Senior Reactor Operator's License
- * - Fuel Handling Foreman has SO or SO Limited. Required only during fuel handling.
- ** - May be filled by a SCRE.

FIGURE 6.1-2

This page intentionally left blank.

ATTACHMENT 2

SUMMARY OF CHANGES TO THE
TECHNICAL SPECIFICATIONS

Attachment 2a: DRESDEN STATION UNITS 2 AND 3

Attachment 2b: QUAD CITIES STATION UNITS 1 AND 2

Attachment 2c: LASALLE COUNTY STATION UNITS 1 AND 2

ATTACHMENT 2a

SUMMARY OF CHANGES

FOR DRESDEN STATION, UNITS 2 AND 3

FACILITY OPERATING LICENSES DPR-19 AND DPR-25

A total of ten (10) changes to the Dresden Station Unit 2 and 3 Technical Specifications have been identified. These changes are considered to be administrative in nature and are listed below as follows:

- 1) Page 6-1/ Paragraph 6.1.B -
 - a) Line 1 "Chart" changed to "charts".
 - b) Line 2 "Relates" changed to "relate".
 - c) Line 4 "Figure 6.1.1" changed to "Figures 1-0 thru 1-7 of the Commonwealth Edison Quality Assurance Manual".

- 2) Page 6-3/ Figure 6.1-1 -
 - a) Figure 6.1-1 has been deleted.

- 3) Page viii/ List of Figures -
 - a) Figure 6.1-1 "Corporate and Station Organization" changed to read "Figure Deleted".

ATTACHMENT 2b

SUMMARY OF CHANGES

FOR QUAD CITIES STATION, UNITS 1 AND 2

FACILITY OPERATING LICENSES DPR-29 AND DPR-30

A total of ten (10) changes to the Quad Cities Station Unit 1 and 2 Technical Specifications have been identified. These changes are considered to be administrative in nature and are listed below as follows:

- 1) Page 6.1-1/ Paragraph 6.1.B -
 - a) Delete references to Figure 6.1-1 and 6.1-2 and change to reference the Commonwealth Edison Quality Assurance Manual.

- 2) Page 6.1-1/ Paragraph 6.1.C -
 - a) Unit One only (DPR-29)
"senior operator's license" changed to "Senior Operator's License".
 - b) Unit Two only (DPR-30)
"senior operating license" changed to "Senior Operator's License" and Senior Operating License" changed to "Senior Operator's License".
 - c) Unit One and Two
"a least" changed to "at least".

- 3) Figure 6.1-1 -
 - a) Delete Figure 6.1-1 and replace with a new page that references the CECO Quality Assurance Manual.

- 4) Figure 6.1-2 -
 - a) Delete Figure 6.1-2 and replace with a new page that references the CECO Quality Assurance Manual.

ATTACHMENT 2c

SUMMARY OF CHANGES

FOR LASALLE STATION, UNITS 1 AND 2

FACILITY OPERATING LICENSES NPF-11 AND NPF-18

A total of eight (8) changes to the LaSalle Station Unit 1 and 2 Technical Specifications have been identified. These changes are considered to be administrative in nature and are listed below as follows:

- 1) Page 6-1/ Paragraph 6.1.B -
 - a) Delete this paragraph and replace with the following statement, "The corporate management organization which relates to the operation of LaSalle Station ... of the Commonwealth Edison Company Topical Report CE-1-A."
- 2) Page 6-1/ Paragraph 6.1.c -
 - a) Delete first sentence "The normal functional organization ... shown in figure 6.1-2."
- 3) Page 6-11/ Figure 6.1-1 -
 - a) Figure 6.1-1 has been deleted.
- 4) Page 6-12/ Figure 6.1-2 -
 - a) Figure 6.1-2 has been deleted.

ATTACHMENT 3

DESCRIPTION OF PROPOSED

ADMENDMENT REQUEST

Attachment 3a: DRESDEN STATION UNITS 2 AND 3

Attachment 3b: QUAD CITIES STATION UNITS 1 AND 2

Attachment 3c: LASALLE COUNTY STATION UNITS 1 AND 2

ATTACHMENT 3a

DESCRIPTION OF PROPOSED AMENDMENT REQUEST
FOR DRESDEN STATION, UNITS 2 AND 3

The changes requested are purely administrative in nature. An item by item description of the proposed changes requested as part of this amendment is provided for information and use. Attachment 2 can be referred to in order to reference back to a given change and its affected page.

Item 1 -

- a) Reference is being made to various charts instead of a singular chart.
- b) Grammatical correction.
- c) The proposed change removes the organization charts from the Technical Specifications. A new reference is being added to refer to the Commonwealth Edison Company Corporate Quality Assurance Manual.

Item 2 and 3 -

The proposed change removes the organization charts since the appropriate charts are already contained in the Commonwealth Edison Company Corporate Quality Assurance Manual.

ATTACHMENT 3b

DESCRIPTION OF PROPOSED AMENDMENT REQUEST
FOR QUAD CITIES STATION, UNITS 1 AND 2

The changes requested are purely administrative in nature. An item by item description of the proposed changes requested as part of this amendment is provided for information and use. Attachment 2 can be referred to in order to reference back to a given change and its affected page.

Item 1 -

- a) The proposed change removes the organization charts from the Technical Specifications. A new reference is being added to refer to the Commonwealth Edison Company Corporate Quality Assurance Manual.

Item 2 -

- a) Grammatical and title corrections.

Item 3 and 4 -

- a) The proposed change removes the organization charts since the appropriate charts are already contained in the Commonwealth Edison Company Corporate Quality Assurance Manual.

ATTACHMENT 3c

DESCRIPTION OF PROPOSED AMENDMENT REQUEST
FOR LASALLE COUNTY STATION, UNITS 1 AND 2

The changes requested are purely administrative in nature. An item by item description of the proposed changes requested as part of this amendment is provided for information and use. Attachment 2 can be referred to in order to reference back to a given change and its affected page.

Item 1 -

- a) The proposed change removes the organization charts from the Technical Specifications. A new reference is being added to refer to the Commonwealth Edison Company Corporate Topical Report CE-1-A.

Item 2 -

- a) The reference to the organization charts is being removed.

Item 3 and 4 -

- a) The proposed change removes the organization charts since the appropriate charts are already contained in the Commonwealth Edison Company Corporate Topical Report CE-1-A.

ATTACHMENT 4

BASIS FOR SIGNIFICANT HAZARDS CONSIDERATION

The Commonwealth Edison Company Corporate Quality Assurance Manual organization charts provide an equivalent method of informing the Nuclear Regulatory Commission of organizational changes. In addition, changes to the Corporate Topical Report are submitted to the NRC for their review.

As stated in Attachment 3, Description of Proposed Amendment Request, the change to remove the organization charts from the Technical Specifications is purely administrative in nature. The proposed change would not affect any equipment or plant operational procedures and has no safety implications.

These changes have been reviewed by Commonwealth Edison and we believe that they do not present a Significant Hazards Consideration. The basis for our determination is documented as follows:

BASIS FOR NO SIGNIFICANT HAZARDS CONSIDERATION

In accordance with the criteria of 10CFR 50.92(c), a proposed amendment to an operating license involves no significant hazards considerations if operation of the facility, in accordance with the proposed amendment, would not:

- 1) Involve a significant increase in the probability or consequences of an accident previously evaluated because:
 - a) The proposed revision does not involve the physical modification of the Plant or equipment. The removal of the organization charts does not alter the compliance of the station Technical specifications with the requirements of 10CFR50.36. These changes are considered to be administrative. Therefore, these changes do not significantly increase the probability or consequences of previously evaluated accidents.
 - b) The correction of typographical errors is considered to be administrative in nature and therefore will not increase the probability or consequences of an accident previously evaluated.

2) Create the possibility of a new or different kind of accident from any accident previously evaluated because:

a) As indicated above, the proposed revision to the Technical Specifications does not involve physical modification to the Plant that could result in the creation of an accident not previously analyzed. Therefore, these changes will not create the possibility of a new or different kind of accident from any accident previously evaluated.

b) The correction of typographical errors is considered to be administrative in nature and therefore will not create the possibility of a new or different kind of accident from any accident previously evaluated.

3) Involve a significant reduction in the margin of safety because:

a) The proposed revision is administrative and does not in any way alter Commonwealth Edison's commitment to maintaining a management structure that contributes to the safe operation and maintenance of Dresden, Quad Cities, and LaSalle County Stations. Hence, there is no significant reduction in the margin of safety as a result of this change.

b) The correction of typographical errors is considered to be administrative in nature and therefore will not reduce the margin of safety.