



Regulatory

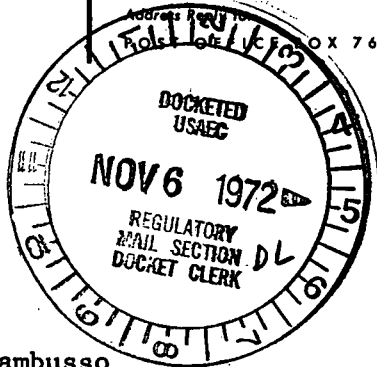
File No.

50-237

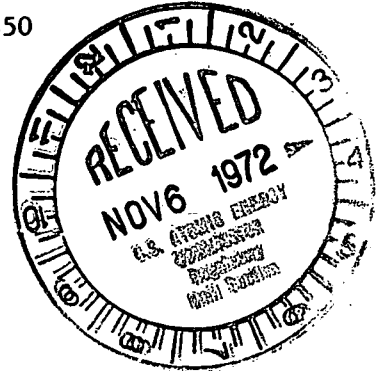
Commonwealth Edison Company

72 WEST ADAMS STREET ★ CHICAGO, ILLINOIS

Address for Mailing: P.O. BOX 767 ★ CHICAGO, ILLINOIS 60690



Dresden Nuclear Power Station
R. R. #1
Morris, Illinois 60450
November 3, 1972



Mr. A. Giambusso
Deputy Director for Reactor Projects
Directorate of Licensing
U. S. Atomic Energy Commission
Washington, D. C. 20545

SUBJECT: LICENSE DPR-19, DRESDEN NUCLEAR POWER STATION, UNIT #2
SECTION 3.8.A.

Dear Mr. Giambusso:

This is to report a condition relating to the operation of the unit in which, on October 5, 1972, the Units 2/3 chimney monitoring system was not in operation, as required by Section 3.8.A.1 of the Technical Specifications.

PROBLEM AND INVESTIGATION

On October 5, 1972, the Units 2/3 chimney monitoring system was removed from service for 37 minutes for repairs. At 1718, "A" sample pump was removed from service to repair burnt motor leads caused by carbon deposits within the pump which were making the motor run hot. The standby sample pump could not be started, since it had been removed from service at 1604 (10/5/72) for replacement of a failed oil lubricator. By 1755, the oil lubricator had been removed from "A" pump and installed on "B" pump, and the monitoring system returned to service. The oil lubricator and motor leads on "B" pump were replaced the following day (10/6/72). See attached sketch.

The failed oil lubricator on "B" pump resulted from attack of its plastic housing by a new type of lubricant, which was placed in the pump to eliminate carboning of pump internals. By 10/18/72, both pumps had been backfitted with new metal oil lubricators not subject to attack by this lubricant. The operation of both pumps following change to the new lubricant and new type lubricator has been satisfactory to date.

145:1

6092
EW

During this period, Units 2 and 3 were operating at 600 MWe and 337 MWe, respectively. The power levels of both units were held constant throughout the period. Both off-gas monitoring systems were in service and were monitored throughout the period. They indicated no changes in the release levels. This system provides no isolation function on signal of high noble gas release rates, as do the off-gas monitoring systems. Any sharp increase in off-gas activity which approached Technical Specification limits during this period would, therefore, still have resulted in isolation of the appropriate off-gas holdup pipe.

CORRECTIVE ACTION

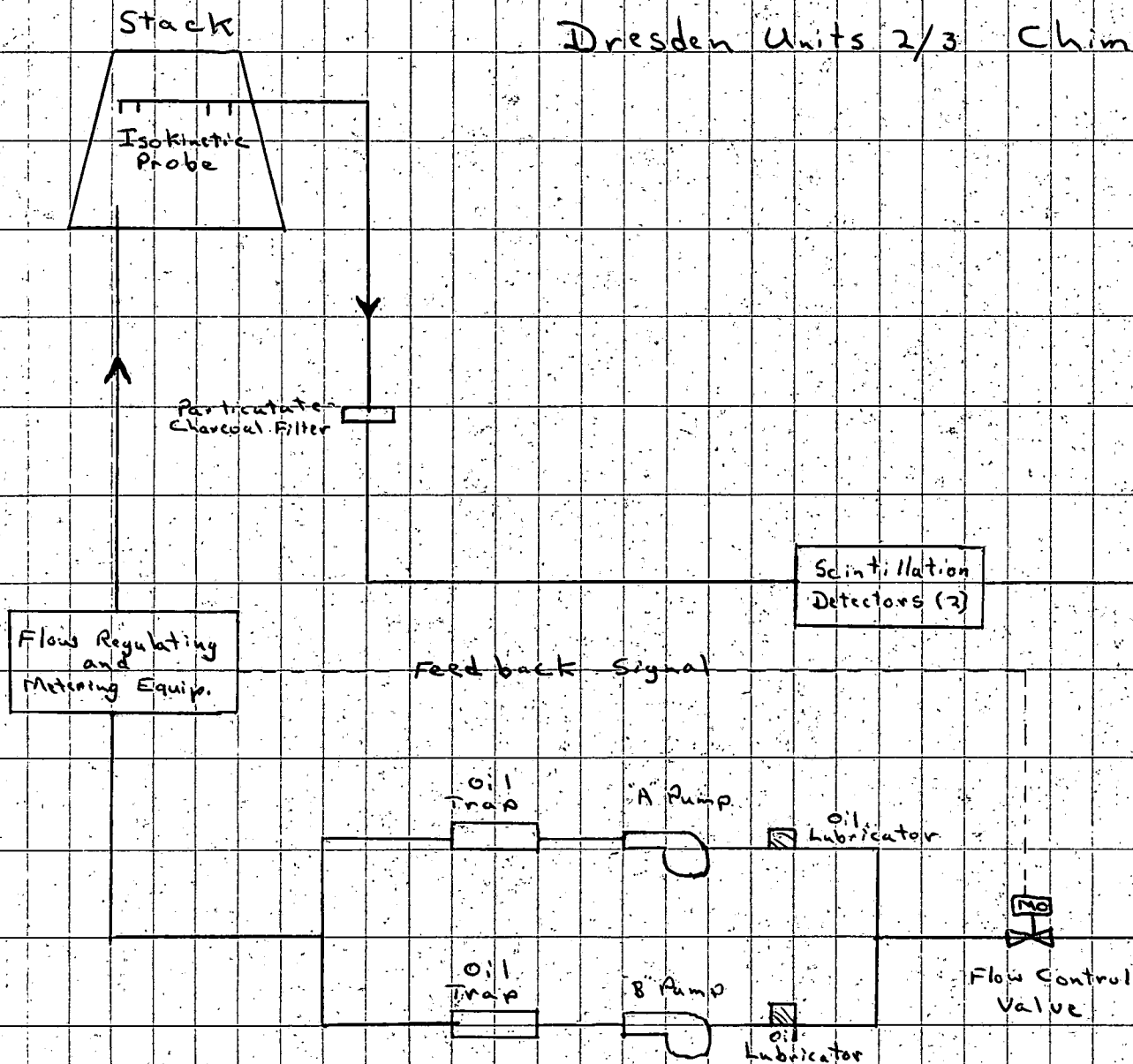
This system, as installed, is already redundant with regard to the sample pumps, in that two samples, each with 100% capacity, are provided. The simultaneous failure of both pumps has not been experienced before, and is considered an isolated incident. The station, therefore, plans no further corrective action.

W. P. Worden

W. P. Worden
Superintendent
Dresden Nuclear Power Station

WPW:do

Dresden Units 2/3 Chimney Monitor



145.3

Received w/lyr Data 11-3-72

Regulatory

File 57