

6.0 ADMINISTRATIVE CONTROLS

6.1 ORGANIZATION

- A. Onsite and offsite organizations shall be established for unit operation and corporate management, respectively. The onsite and offsite organizations shall include the positions for activities affecting the safety of the nuclear power plant.
1. Lines of authority, responsibility, and communication shall be established and defined for the highest management levels through intermediate levels to and including all operating organization positions. These relationships shall be documented and updated, as appropriate, in the form of organization charts, functional descriptions of departmental responsibilities and relationships, and job descriptions for key personnel positions, or in equivalent forms of documentation. These requirements shall be documented in the Quality Assurance Manual.
 2. The Station Manager shall be responsible for overall unit safe operation and shall have control over those onsite activities necessary for safe operation and maintenance of the plant.
 3. The Chief Nuclear Officer (CNO) shall have corporate responsibility for overall plant nuclear safety and shall take any measures needed to ensure acceptable performance of the staff in operating, maintaining, and providing technical support to the plant to ensure nuclear safety.
 4. The individuals who train the operating staff and those who carry out health physics and quality assurance functions may report to the appropriate onsite manager; however, they shall have sufficient organizational freedom to ensure their independence from operating pressures.
- B. The Shift Supervisor shall be responsible for directing and commanding the overall operation of the facility on his shift. The primary management responsibility of the Shift Supervisor shall be for safe operation of the nuclear facility on his shift under all conditions. A management directive signed by the Site Vice President emphasizing this primary management responsibility and that clearly establishes the command duties of the Shift Supervisor shall be reissued to all station personnel on an annual basis.
- C. The shift manning for the station shall be as shown in Figure 6.1-3. The individual filling the position of Systems Engineering Supervisor shall meet the minimum acceptable level for "Technical Manager" as described in Section 4.2.4 of ANSI N18.1-1971. The individual filling the position of Operations Manager shall meet the minimum acceptable level for "Plant Manager" as described in Section 4.2.1 of ANSI N18.1-1971.

FOR INFORMATION
ONLY. DISCARD
AFTER USE.

9610240092 961016
PDR ADDCK 05000237
F PDR

ADMINISTRATION CONTROLS

1. At least one licensed Reactor Operator shall be in the control room when fuel is in the reactor. In addition, while the reactor is in OPERATIONAL CONDITION 1, 2 or 3, at least one licensed Senior Reactor Operator who has been designated by the Shift Supervisor to assume the control room direction responsibility shall be in the Control Room.
2. A radiation protection technician* shall be on site when fuel is in the reactor.
3. All CORE ALTERATIONS shall be observed and directly supervised by either a licensed Senior Reactor Operator or Senior Reactor Operator Limited to Fuel Handling who has no other concurrent responsibilities during this operation.
4. A site Fire Brigade of at least 5 members shall be maintained onsite at all times*. The Fire Brigade shall not include the Shift Supervisor, the Station Control Room Engineer and the 2 other members of the minimum shift crew necessary for safe shutdown of the unit and any personnel required for other essential functions during a fire emergency.
5. The Independent Safety Engineering Group (ISEG) shall function to examine unit operating characteristics, NRC issuances, industry advisories, Licensee Event Reports and other sources of plant design and operating experience information, including plants of similar design, which may indicate areas for improving unit safety. The ISEG shall be composed of at least three, dedicated, full-time engineers of multi-disciplines located on site and shall be augmented on a part-time basis by personnel from other parts of the Commonwealth Edison Company organization to provide expertise not represented in the group. The ISEG shall be responsible for maintaining surveillance of unit activities to provide independent verification# that these activities are performed correctly and that human errors are reduced as much as practical. The ISEG shall make detailed recommendations for revised procedures, equipment modifications, maintenance activities, operations activities or other means of improving unit safety to the Site Quality Verification Director and the Station Manager.
6. The Station Control Room Engineer (SCRE) may serve as the Shift Technical Advisor (STA) during abnormal operating and accident conditions. During these conditions, the SCRE or other on duty STA shall provide technical support to the Shift Supervisor in the areas of thermal hydraulics, reactor engineering and plant analysis with regard to the safe operation of the unit.

*The radiation protection technician and Fire Brigade composition may be less than the minimum requirements for a period of time not to exceed two hours in order to accommodate unexpected absence provided immediate action is taken to fill the required positions.

#Not responsible for sign-off feature.

ADMINISTRATION CONTROLS

To assure capability for performance of all STA functions:

- a. The shift foreman (SRD) shall participate in the SCRE shift relief turnover.
- b. During the shift, the shift engineer and the shift foreman (SRD) shall be made aware of any significant changes in plant status in a timely manner by the SCRE.
- c. During the shift, the shift engineer and the shift foreman (SRD) shall remain abreast of the current plant status. The shift foreman (SRD) shall return to the control room two or three times per shift, where practicable, to confer with the SCRE regarding plant status. Where not practical to return to the control room, the shift foreman (SRD) shall periodically check with the SCRE for a plant status update. The shift foreman (SRD) shall not abandon duties critical to reactor operation, unless specifically ordered by the shift engineer.

ADMINISTRATION CONTROLS

7. The amount of overtime worked by unit staff members performing safety related functions shall be limited and controlled in accordance with the NRC Policy Statement on working hours (Generic Letter 82-12).
 8. The Operations Manager or Shift Operations Supervisor shall hold a Senior Reactor Operator License.
- D. Qualifications of the station management and operating staff shall meet minimum acceptable levels as described in ANSI N18.1, "Selection and Training of Nuclear Power Plant Personnel," dated March 8, 1971. The Health Physics Supervisor shall meet the requirements of radiation protection manager of Regulatory Guide 1.8, September 1975. The ANSI N18.1-1971 qualification requirements for Radiation Protection Technician may also be met by either of the following alternatives:
1. Individuals who have completed the Radiation Protection Technician training program and have accrued 1 year of working experience in the specialty, or
 2. Individuals who have completed the Radiation Protection Technician training program, but have not yet accrued 1 year of working experience in the specialty, who are supervised by on-shift health physics supervision who meet the requirements of ANSI N18.1-1971 Section 4.3.2, "Supervisor Not Requiring AEC Licenses," or Section 4.4.4, "Radiation Protection."
- E. Retraining and replacement training of Station personnel shall be in accordance with ANSI N18.1, "Selection and Training of Nuclear Power Plant Personnel", dated March 8, 1971 and Appendix "A" of 10 CFR Part 55, and shall include familiarization with relevant industry operational experience.
- F. Retraining shall be conducted at intervals not exceeding 2 years.

ADMINISTRATIVE CONTROLS

- G. DELETED (The Review and Investigative Function and the Audit Function are described in the Quality Assurance Manual Topical Report CE-1-A).

Figure 6.1-3

MINIMUM SHIFT CREW COMPOSITION

WITH UNIT 1 IN CONDITION 1, 2, OR 3		
POSITION	NUMBER OF INDIVIDUALS REQUIRED TO FILL POSITION	
	CONDITIONS 1, 2 and 3	CONDITIONS 4 and 5
SE	1 ^a	1 ^a
SF	1 ^a	None
RO	2 ^b	1
AO	2 ^b	1
SCRE	1 ^a	None

or, whenever a SCRE (SRO/STA) is not included in the shift crew composition, the minimum shift crew composition shall be as follows:

WITH UNIT 1 IN CONDITION 1, 2, OR 3		
POSITION	NUMBER OF INDIVIDUALS REQUIRED TO FILL POSITION	
	CONDITIONS 1, 2 and 3	CONDITIONS 4 and 5
SE	1 ^a	1 ^a
SF	1 ^a	None
RO	2 ^b	1
AO	2 ^b	1
STA	1 ^a	None

WITH UNIT 1 IN CONDITION 4 OR 5 OR DEFUELED		
POSITION	NUMBER OF INDIVIDUALS REQUIRED TO FILL POSITION	
	CONDITIONS 1, 2 and 3	CONDITIONS 4 and 5
SE	1 ^a	1 ^a
SF	1	None
RO	2	1
AO	2	2 ^b
STA	1	None

Figure 6.1-3 (Continued)

MINIMUM SHIFT CREW COMPOSITION

NOTES

a/ Individual may fill the same position on Unit 1.

b/ One of the two required individuals may fill the same position on Unit 1.

- SE - Shift Supervisor (Shift Engineer) with a Senior Reactor Operators License on Unit 2.**
- SF - Shift Foreman with a Senior Reactor Operators License on Unit 2.**
- RO - Individual with a Reactor Operators License on Unit 2.**
- AO - Auxiliary Operator.**
- SCRE - Station Control Room Engineer with a Senior Reactor Operators License.**

Except for the Shift Supervisor, the Shift Crew Composition may be one less than the minimum requirements of Figure 6.1-3 for a period of time not to exceed 2 hours in order to accommodate unexpected absence of on duty shift crew members provided immediate action is taken to restore the shift crew composition to within the minimum requirements of Figure 6.1-3. This provision does not permit any shift crew position to be unmanned upon shift change due to an oncoming shift crewman being late or absent.

While the unit is in OPERATIONAL CONDITION 1, 2, or 3, an individual with a valid SRO license shall be designated to assume the Control Room direction function. While the unit is in OPERATIONAL CONDITION 4 or 5, an individual with a valid SRO or RO license shall be designated to assume the Control Room direction function.

ATTACHMENT 5:

Quad Cities Station Table B-1 Staffing Summary

GUIDANCE FOR AUGMENTATION OF THE ONSITE
EMERGENCY ORGANIZATION WITHIN 60 MINUTES

Functional Area	Unusual Event	Alert	Site & General Emergency
1. Command & Control	<u>Notification Only</u>		
Station Director	1	1	1
Oper. Director	1	1	1
Maint. Director	*1	1	1
Tech Director	*1	1	1
Admin. Director	*1	1	1
Rad Prot. Director	*1	1	1
Chem Director	*1	1	1
Security Director	*1	1	1
OSC Director	*1	1	1
OSC Supervisor	*1	1	1
TSC Environs Director	*1	1	1
2. Communicator		1	1
3. Accident Assessment			
Environs Personnel		*2	4
Radiation Protection Personnel		*2	2
Chem (Lab) Personnel		*1	1
4. Technical Support			
Nuclear (Core) Engineering Personnel		*1	1
Electrical Engineering Personnel		*1	1
Mechanical Engineering Personnel		*1	1
5. Repair & Correction			
Mechanical Maintenance Personnel		*1	1
Electrical Maintenance Personnel		*1	1
Radwaste Personnel		*1	1
Instrument Maintenance Personnel		*1	1
6. Protective Actions			
Radiation Protection Personnel		*2	4
	*2-11	*12-26	30

*As needed depending upon the nature of the emergency.

NOTE

Additional support in the areas of Command & Control, Communications, and Accident Assessment will be available from the offsite GSEP organization. It is reasonable to expect partial manning of the CEOF or EOF within 60 minutes for the Site & General Emergencies.

(Final)

APPROVED

JUL 10 1996

Major Tasks	Position	0 6 5 4	Licenses		0 6 5 4	Licenses		0 6 5 4	Licenses	
			Init E- Plan	Cur- rent		Init E- Plan	Cur- rent		Init E- Plan	Cur- rent
Plant Ops	Shift Supv (SRO) Shift Foreman (SRO) CR Operators Aux Operators Other <u>RW Supervisor</u>	1 1 2 2			- - - -		2 2 4 *6 1	- - - -		
Emergency Direction***	STA, SS or designated mgr. Other _____	1"			-		1	-		2
Notification/Communication	Communicators Other _____	1			1		1	2		9
Rad Assessment and Ops Assessment Support	EOF Director Sr. HP Dose Assessor Other <u>Chem Dir / Jock</u>	-			- 1		A MODEL	1		1 3 3
Offsite Surveys Onsite (outside) Surveys Inplant Surveys Chemistry/Radiochemistry	HP Techs Chem Techs Other <u>RP Supervisor</u>	- - 1 1			2 1 1 -		2 HP 1 Chem 1	2 1 1 1		7
Technical Support	STA Core/Thermal Hydraulics Electrical Mechanical Other _____	1 - - -			- 1 - -		* 1-6/5 1 1 1	- - 1 1		2 1 1 1
Repair and Corrective Actions	Mechanics Rad Waste Operators Electricians I&C Techs Other _____	1" - 1" -			- - 1 1		1 1 1 1	1 1 1 -		3 1 1 1
Radiation Protection a. Access Control b. HP Coverage c. Personnel monitoring d. Dosimetry issue	HP Techs Other _____	2"			2		* Same 2	2		
Firefighting	Fire Brigade Members Other _____	Per T/S			N/A			N/A		
First Aid	First Aid Qualified Personnel Other _____	2"			N/A			N/A		
Security and personnel accountability	Security Personnel Other <u>ADMIN DIR</u>	Per Sec Plan			N/A			N/A		1 1
Totals (Check for Double-Counting)		10			11		22	15		29

Notes:

For each unaffected nuclear unit in operation, maintain at least one shift foreman, one control room operator and one auxiliary operator except that units sharing a control room may share a shift foreman if all functions are covered.

May be provided by shift personnel assigned other functions.

Overall direction of facility response to be assumed by EOF director when all centers are fully manned. Director of minute-to-minute facility operations remains with senior manager in technical support center or control room.

May be performed by engineering aide to shift supervisor.

* Same

Note: QUAD CITIES DOES NOT DIFFERENTIATE BETWEEN ON-SHIFT + 30 MINUTE RESPONDERS.

LLK 96-011

September 27, 1996

EFFECTIVE DATE: October 1, 1996

TO:

Bailey, Mark (2)	Knight, Randy (2)	CR-ERM 30A
Black, Jean (2)	Levy, Matt (2)	SE-ERM 30V
Blamey, Al (2)	Maze, Brian (2)	SE-Phone List Book
Brady, John (2)	McMillan, Jim (2)	Simulator-ERM 30Z
Brown, Cecil (2)	Okland, Ken (2)	TSC-ERM 30G
Carson, Bob (2)	Powell, Greg (2)	TSC-ERM 30H
Cook, Dennis (2)	Porter, Bill (2)	Security-K. Lindley
Cook, Randy (2)	Reynolds, Scott (2)	(8 copies)
Davis, Steve (2)	Rushing, Tracy (2)	TSC-EP-Coord.
Dierbeck, Joe (2)	Schnapp, Angie (2)	(20 copies)
Eldridge, Sharon(2)	Sharer, Barry(2)	
Fier, Kevin (2)	Sievert, Mark(2)	
Ford, Jim (2)	Smith, Curt (2)	
	Sondgeroth, K. (2)	
Kallenbach, Dave (2)	Sullivan, Mike (2)	
Killian, Steve (2)	Tucker, Roger (2)	
	Williams, Archie (2)	

Attached are copies of the Fourth Quarter 1996 GSEP Organization Call List. Two copies are provided-one copy is for use at home and the other is for at work. Please discard any earlier copies of the call list. These copies are for your use so you may mark on them as necessary. If you use a copy for a callout, please return it to the EP Coordinator on the next working day and a new copy will be provided.

Four teams made up of Station, Operations, Technical, Maintenance, and Rad Protection/Environs Directors have been identified who can be reached via pagers, if necessary. These individuals' team identification follows their name on the call list (A, B, C, or D). The Shift Engineer or designee should contact the TSC minimum staffing team via pager. Instructions for pager use can be found on Attachment 1. Call both the group 800 number and the Station Manager 800 number.

NOTE

Be aware that Fitness for Duty should be addressed and FFD copies are attached for your use as part of this package.

The paged directors should call into the station using the pager code indicated as the extension to be called. Provide your name and GSEP position on the voice mail for that extension. The Technical, Maintenance, and Rad Protection/Environs Directors should contact their respective callers to augment the GSEP response.

The Augmentation Callers should contact the remainder of the Directors for the TSC and OSC. Call once through your section of the list attempting to contact the necessary numbers of Directors and staff positions required. Fill out information on both the Call List and the FFD Attachment A form.

If you assist in an ACTUAL callout, contact the TSC Security Director (ext 3006-voice mail available), and provide the names of the people contacted who will be reporting to the station. For an augmentation drill, the callers should ensure that employees are requested **not** to report to the station. Leave a voice mail of people contacted. For any Fitness for Duty issues, contact the TSC Security Director (ext 3007) or the Security Shift Supervisor (ext 2500).



Linda Kreuder
EP Coordinator

ATTACHMENT 1

INSTRUCTIONS TO ACTIVATE TSC MINIMUM STAFFING PAGERS

1. To activate the pagers as a group, perform the following steps

- Dial 1-800-759-7626

- After series of beeps, insert the group pager number which is 6607.

- For a TSC activation, after series of beeps, insert the appropriate code:

 - 9114737 = ALERT

 - 9114738 = SITE EMERGENCY

 - 9114739 = GENERAL EMERGENCY

- For an augmentation drill, after series of beeps, insert the code

 - 9114740 = Augmentation Drill

- For pager tests, after series of beeps, insert the code

 - 9113006 = Pager Test

- Insert pound sign (#) and hang up.

2. To activate the Station Manager's pager, perform the following steps:

- Dial 1-800-759-7243

- Enter PIN 2894745

- Enter the above appropriate code for TSC activation, augmentation, or pager test.

- Insert pound sign (#) and hang up.

3. Approximately 15 minutes after activation, access the voice mail for the event listed above:

ATTACHMENT 1

- Dial 3425
- Press the pound sign (#) key
- Dial the appropriate code number (4737, 4738, 4739, 4740, or 3006)
- The security code is 1111
- Determine the availability of the minimum staff directors. If any of the five TSC directors (Station, Operations, Maintenance, RP/Environs, or Tech) has not called in, use the GSEP call list to contact another Director.

MINIMUM STAFFING SCHEDULE FOR 1996

WEEK #	DATE	TEAM
1	1/1/96-1/7/96	D2
2	1/8/96-1/14/96	A1
3	1/15/96-1/21/96	B1
4	1/22/96-1/28/96	C1
5	1/29/96-2/4/96	D1
6	2/5/96-2/11/96	A2
7	2/12/96-2/18/96	B2
8	2/19/96-2/25/96	C2
9	2/26/96-3/3/96	D2
10	3/4/96-3/10/96	A1
11	3/11/96-3/17/96	B1
12	3/18/96-3/24/96	C1
13	3/25/96-3/31/96	D1
14	4/1/96-4/7/96	A2
15	4/8/96-4/14/96	B2
16	4/15/96-4/21/96	C2
17	4/22/96-4/28/96	D2
18	4/29/96-5/5/96	A1
19	5/6/96-5/12/96	B1
20	5/13/96-5/19/96	C1
21	5/20/96-5/26/96	D1
22	5/27/96-6/2/96	A2
23	6/3/96-6/9/96	B2
24	6/10/96-6/16/96	C2
25	6/17/96-6/23/96	D2
26	6/24/96-6/30/96	A1
27	7/1/96-7/7/96	B1
28	7/8/96-7/14/96	C1

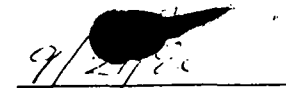
MINIMUM STAFFING SCHEDULE FOR 1996

29	7/15/96-7/21/96	D1
30	7/22/96-7/28/96	A2
31	7/29/96-8/4/96	B2
32	8/5/96-8/11/96	C2
33	8/12/96-8/18/96	D2
34	8/19/96-8/25/96	A1
35	8/26/96-9/1/96	B1
36	9/2/96-9/8/96	C1
37	9/9/96-9/15/96	D1
38	9/16/96-9/22/96	A2
39	9/23/96-9/29/96	B2
40	9/30/96-10/6/96	C2
41	10/7/96-10/13/96	D2
42	10/14/96-10/20/96	A1
43	10/21/96-10/27/96	B1
44	10/28/96-11/3/96	C1
45	11/4/96-11/10/96	D1
46	11/11/96-11/17/96	A2
47	11/18/96-11/24/96	B2
48	11/25/96-12/1/96	C2
49	12/2/96-12/8/96	D2
50	12/9/96-12/15/96	A1
51	12/16/96-12/22/96	B1
52	12/23/96-12/29/96	C1
53	12/30/96-1/5/97	D1

GUIDELINES FOR GSEP PAGERS
FOR TSC MINIMUM STAFFING

1. Stay within one hour of the station when you have pager duty.
2. Observe fitness for duty requirements when you have pager duty.
3. Trades are allowed but should be minimized. If a trade is necessary, you are responsible for finding a qualified replacement. You are also responsible to ensure that replacement has a pager or obtains the pager from you.
4. The pagers are assigned for one week periods. The week begins on Monday mornings. You are responsible to get the pager to the next individual on the schedule.


 Station Manager Approval


 Date

GSEP ORGANIZATION CALL LIST

POSITION	CALL OUT GROUP	NAME	NOTIFIED BY	HOME PHONE	TIME CONTACTED	ESTIMATED TRAVEL TIME	EXPECTED ARRIVAL TIME
STATION DIRECTOR	B	Bill Pearce (A)	Pager by Shift Eng.	309-523-3935		15 min	
(Call <u>One</u>)		Dave Cook (B)		319-359-8991		35 min	
		Frank Tsakeres (C)		319-355-4313		45 min	
		Jack Purkis (D)		319-289-3586		40 min	
		Les Schmeling		309-523-2627		15 min	
OPERATIONS DIRECTOR	B	Bob Svaleson (A)	Pager by Shift Eng.	319-289-4835		30 min	
(Call <u>One</u>)		Alex Misak (B)		319-359-7445		40 min	
		Tom Houzenga (C)		815-772-7667		30 min	
		Gary Klone (D)		319-243-7115		30 min	
TECHNICAL DIRECTOR	B	Alan Blamey (A)	Pager by Shift Eng.	319-332-6417		45 min	
(This Director contacts a Technical Caller)		Bill Porter (C)		319-355-8598		50 min	
		Steve Killian (D)		319-322-6733		50 min	
		Sharon Eldridge @		815-659-3030		75 min	

GSEP ORGANIZATION CALL LIST

POSITION	CALL OUT GROUP	NAME	NOTIFIED BY	HOME PHONE	TIME CONTACTED	ESTIMATED TRAVEL TIME	EXPECTED ARRIVAL TIME
MAINTENANCE DIRECTOR	B	Dennis Cook (A) ₁	Pager by Shift Eng.	319-388-0504		45 min	
(This Director contacts a Maintenance caller)		Mark Sievert (B) ₁		309-797-4317		40 min	
		Curt Smith (C) ₁		815-589-2218		30 min	
		Joe Dierbeck (D) ₁		309-659-7223		30 min	
		Brian Maze (A) ₂		815-589-4788		30 min	
		Randy Cook (B) ₂		319-289-5553		40 min	
		Barry Sharer (C) ₂		309-523-2777		20 min	
		Mike Sullivan (D) ₂		319-332-8541		45 min	
RP/ENV DIRECTOR	B	Cecil Brown (A) ₁	Pager by Shift Eng.	815-625-7819		50 min	
(This Director contacts a Rad-Chem caller)		Bob Carson (B) ₁		319-332-4483		35 min	
		Jim McMillan (C) ₁		309-654-2331		15 min	
		Greg Powell (D) ₁		319-332-7747		30 min	
		Archie Williams (A) ₂		309-441-5537		50 min	
		Dave Kallenbach (B) ₂		815-589-4319		20 min	
		Angie Schnapp (C) ₂		309-736-9133		45 min	

GSEP ORGANIZATION CALL LIST

POSITION	CALL OUT GROUP	NAME	NOTIFIED BY	HOME PHONE	TIME CONTACTED	ESTIMATED TRAVEL TIME	EXPECTED ARRIVAL TIME
CONTROL ROOM COMMUNICATORS	C	Tom Doty	Ops Shift Supv.	309-887-4573		20 min	
(Call <u>Two</u>)		Edward Klundt		309-496-2114		20 min	
		Brad Williams		319-355-8000		40 min	
		Nick Duck		309-936-7259		50 min	
		Ken Pioterek		815-879-5321		75 min	

GSEP ORGANIZATION CALL LIST

POSITION	CALL OUT GROUP	NAME	NOTIFIED BY	HOME PHONE	TIME CONTACTED	ESTIMATED TRAVEL TIME	EXPECTED ARRIVAL TIME
RAD-CHEM CALLER	E	Mark Bailey	RP/ENV Director	319-386-0172		N/A	
		Jean Black		319-242-2443		N/A	
		Roger Tucker		309-887-4251		N/A	
		Randy Knight		815-589-4863		N/A	
ENVIRONS DIRECTOR	E	Dave Kallenbach	Rad-Chem Caller	815-589-4319		20 min	
(Call One)		Angie Schnapp		309-736-9133		45 min	
		Archie Williams		309-441-5537		50 min	
RAD PROT DIRECTOR	E	Jim McMillan	Rad-Chem Caller	309-654-2331		15 min	
(Call One)		Greg Powell		319-332-7747		30 min	
		Bob Carson		319-332-4483		35 min	
		Cecil Brown		815-625-7819		50 min	
CHEMISTRY DIRECTOR	E	Rod Wiebenga	Rad-Chem Caller	815-589-4821		25 min	
(Call One)		Paul Behrens		319-242-1479		30 min	
		John Bucciferro		319-359-4425		45 min	
		Ron Hebelers		815-589-3529		30 min	
		Jim Wooldridge		319-355-8246		50 min	

GSEP ORGANIZATION CALL LIST

POSITION	CALL OUT GROUP	NAME	NOTIFIED BY	HOME PHONE	TIME CONTACTED	ESTIMATED TRAVEL TIME	EXPECTED ARRIVAL TIME
HPN COMMUNICATOR	E1	Marty DeVault	Rad-Chem Caller	309-659-2124		20 min	
(Call One)		Greg Moran		815-625-0595		50 min	
		Ted Bush		815-772-3151		35 min	
		Gary Thompson @		309-752-7058		45 min	
OSC SUPERVISOR	E1	Scott Weber	Rad-Chem Caller	309-659-2891		20 min	
(Call One)		Dan Bielema		815-589-2526		25 min	
		Greg Rankin		309-496-2888		30 min	
		Tony O'Horo		815-772-4184		30 min	
		Jim Rosenow		815-772-2968		30 min	
PASS CHEMIST	E1	Len Astrowski	Rad-Chem Caller	319-289-5653		25 min	
(Call One)		Ray Moore		319-259-1340		40 min	
		Mark Stuhlman		319-259-8261		40 min	
		Jim Wooldridge		319-355-8246		45 min	
GSEP ADVISOR PERSONNEL	E1	Linda Kreuder	Rad-Chem Caller	309-887-4243		15 min	
(Call One)		Mike Field		309-887-4962		25 min	

GSEP ORGANIZATION CALL LIST

POSITION	CALL OUT GROUP	NAME	NOTIFIED BY	HOME PHONE	TIME CONTACTED	ESTIMATED TRAVEL TIME	EXPECTED ARRIVAL TIME
FIELD TEAM COMMUNICATOR	E1	Wolfgang Schmidt	Rad-Chem Caller	815-772-3249		40 min	
(Call One)		Ken Ohr		319-332-7725		40 min	
ODCS Specialist	E1	Randy Tank	Rad-Chem Caller	309-496-1204		30 min	
(Call One)		Kent Engle		309-523-2576		30 min	
		Tim Kirkham		309-944-1411		45 min	

GSEP ORGANIZATION CALL LIST

POSITION	CALL OUT GROUP	NAME	NOTIFIED BY	HOME PHONE	TIME CONTACTED	ESTIMATED TRAVEL TIME	EXPECTED ARRIVAL TIME
MAINTENANCE CALLER	F	Jim Ford	Maintenance Director	319-322-0268		N/A	
(Call One)		Kevin Fier		309-788-2515		N/A	
		Keith Sondgeroth		309-887-4742		N/A	
		John Brady		815-626-8249		N/A	
		Ken Okland		815-589-4755		N/A	
OSC DIRECTOR	F	Bob Tubbs	Maintenance Caller	319-243-8802		30 min	
(Call One)		Jim Swales		319-243-7828		25 min	
		Mark Kooi		815-772-7538		30 min	
		Rick Thompson		319-332-6388		35 min	
SECURITY DIRECTOR	F	Keith Leech	Maintenance Caller	815-772-3939		30 min	
(Call One)		Brent Rittmer		309-659-7216		20 min	
		Dan Kanakares		319-659-8359		50 min	
		JoAnn Ottens		815-772-4909		35 min	

GSEP ORGANIZATION CALL LIST

POSITION	CALL OUT GROUP	NAME	NOTIFIED BY	HOME PHONE	TIME CONTACTED	ESTIMATED TRAVEL TIME	EXPECTED ARRIVAL TIME
ASSISTANT STATION DIRECTOR	F	Dave Bowman	Maintenance Caller	309-755-7206		30 min	
(Call One)		Bob Walsh		319-355-3926		40 min	
		Chuck Dieckmann		319-289-3691		40 min	
		Chris Symonds		319-659-3977		50 min	
ADMINISTRATIVE DIRECTOR	F		Maintenance Caller				
(Call One)		Terri Friedrich		309-496-2674		20 min	
		Jen Thiede		319-659-8333		50 min	
		Fred Chevalier		309-792-5158		40 min	
MAINTENANCE DIRECTOR STAFF	F1	Barry Sharer	Maintenance Caller	309-523-2777		20 min	
(Call One)		Curt Smith		815-589-2218		30 min	
		Joe Dierbeck		309-659-7223		30 min	
		Brian Maze		815-589-4788		30 min	
		Mark Sievert		309-797-4317		40 min	
		Randy Cook		319-289-5553		40 min	
		Dennis Cook		319-388-0504		45 min	
		Mike Sullivan		319-332-8541		45 min	

GSEP ORGANIZATION CALL LIST

POSITION	CALL OUT GROUP	NAME	NOTIFIED BY	HOME PHONE	TIME CONTACTED	ESTIMATED TRAVEL TIME	EXPECTED ARRIVAL TIME
ELECTRICAL MAINTENANCE STAFF	F1	Doug Meyer	Maintenance Caller	309-887-4644		25 min	
(Call One)		Jeff Melton		319-243-1438		30 min	
		Joe Marchini		319-242-2364		30 min	
		Ralph Rohrbaugh		309-659-2640		30 min	
		Kevin Strain		319-259-2069		35 min	
		John Lange		815-379-2202		60 min	

GSEP ORGANIZATION CALL LIST

POSITION	CALL OUT GROUP	NAME	NOTIFIED BY	HOME PHONE	TIME CONTACTED	ESTIMATED TRAVEL TIME	EXPECTED ARRIVAL TIME
MECHANICAL MAINTENANCE STAFF	F1		Maintenance Caller				
(Call One)		Bill Stoermer		309-523-2951		25 min	
		Bill James		815-259-2010		30 min	
		Keith Beveroth		815-772-7922		35 min	
		Ron Bull		815-273-2587		40 min	
		Tom Richardson		815-273-7574		40 min	
		Mike Schultz		319-386-6384		45 min	

GSEP ORGANIZATION CALL LIST

POSITION	CALL OUT GROUP	NAME	NOTIFIED BY	HOME PHONE	TIME CONTACTED	ESTIMATED TRAVEL TIME	EXPECTED ARRIVAL TIME
INSTRUMENT MAINTENANCE STAFF	F1	Bob Huizenga	Maintenance Caller	309-523-3838		15 min	
(Call <u>One</u>)		Craig Richardson		319-332-0915		30 min	
		Norm Pasvogel		309-659-7289		30 min	
		Rich Thomas		309-659-2818		30 min	
		John Abel		309-887-4210		20 min	
		Craig Spainhower		309-793-6698		45 min	
		Brad Lamont		319-285-7899		45 min	

GSEP ORGANIZATION CALL LIST

POSITION	CALL OUT GROUP	NAME	NOTIFIED BY	HOME PHONE	TIME CONTACTED	ESTIMATED TRAVEL TIME	EXPECTED ARRIVAL TIME
TECHNICAL CALLER	G		Technical Director				
(Call <u>One</u>)		Matt Levy		309-523-3243		N/A	
		Steve Davis		815-772-4966		N/A	
		Scott Reynolds		309-523-3679		N/A	
		Tracy Rushing		309-792-1723		N/A	
STATE/NARS COMMUNICATORS	G1		Technical Caller				
(Call <u>One</u>)		Rob Korneta		319-332-1736		40 min	
		Gary Knapp		309-796-0932		40 min	
		Dave Luebbe		319-391-3514		50 min	
		Tracy Rushing		309-792-1723		50 min	

GSEP ORGANIZATION CALL LIST

POSITION	CALL OUT GROUP	NAME	NOTIFIED BY	HOME PHONE	TIME CONTACTED	ESTIMATED TRAVEL TIME	EXPECTED ARRIVAL TIME
COMMUNICATORS	G1	Dick Gaylord	Technical Caller	309-654-2417		15 min	
ENS (1)		Keven Floming		309-654-2351		15 min	
TECH to EOF (1)		Ted Lihou		309-523-3816		15 min	
TECH to CR (1)		Jim Schnitzmeyer		309-887-5106		15 min	
IN CONTROL ROOM (1)		Terry Barber		309-659-2057		20 min	
STATUS BOARDS (2)		Andy Seynaeve		309-496-9339		20 min	
		Craig Paulson		309-659-2049		25 min	
IN OSC (1)		Tony Kuebel		815-589-2830		25 min	
(Call Seven)		Scott Fisher		309-523-2825		15 min	
		Dave Boyles		815-772-3601		30 min	
		Joe Manemann		319-243-4054		30 min	
		Tony Fuhs		319-391-2897		35 min	
		Bob Lundstrom		309-752-9787		35 min	
		Bill Finke		319-285-9523		40 min	
		Dan Snook		309-795-1096		60 min	

GSEP ORGANIZATION CALL LIST

POSITION	CALL OUT GROUP	NAME	NOTIFIED BY	HOME PHONE	TIME CONTACTED	ESTIMATED TRAVEL TIME	EXPECTED ARRIVAL TIME
SYS ENG - NUCLEAR	G1	Jason Smith	Technical Caller	309-654-2038		10 min	
(Call One)		Jim Piekut		319-332-0370		30 min	
		Frank Amato		309-736-7630		35 min	
SYS ENG - ELECTRICAL	G1		Technical Caller				
(Call One)		Dave Luebbe		319-391-3514		50 min	
		James Dinh		319-332-4462		45 min	
SYS ENG - MECHANICAL THERMAL	G1		Technical Caller				
(Call One)		Gary Knapp		309-796-0932		40 min	
		Dave Schumacher		319-289-5362		40 min	

ATTACHMENT 'A'

CALL-OUT WORK RECORD

Date: _____

Dept: _____

Name of Person conducting Call-Out _____

Individual Called Out	Have You consumed In Past 5 Hours?		Are you Fit For Duty?		Security Notified To Test	Comments, If Any
	N	Y	N	Y	N Y	
	N	Y	N	Y	N Y	
	N	Y	N	Y	N Y	
	N	Y	N	Y	N Y	
	N	Y	N	Y	N Y	
	N	Y	N	Y	N Y	
	N	Y	N	Y	N Y	
	N	Y	N	Y	N Y	
	N	Y	N	Y	N Y	
	N	Y	N	Y	N Y	
	N	Y	N	Y	N Y	
	N	Y	N	Y	N Y	
	N	Y	N	Y	N Y	
	N	Y	N	Y	N Y	
	N	Y	N	Y	N Y	
	N	Y	N	Y	N Y	
	N	Y	N	Y	N Y	
	N	Y	N	Y	N Y	
	N	Y	N	Y	N Y	
	N	Y	N	Y	N Y	

K:\ffd\guideline\drft206

ATTACHMENT 'A'

CALL-OUT WORK RECORD

Date: _____

Dept: _____

Name of Person conducting Call-Out _____

Individual Called Out	Have You consumed in Past 5 Hours?		Are you Fit For Duty?		Security Notified To Test	Comments, If Any
	N	Y	N	Y	N Y	
	N	Y	N	Y	N Y	
	N	Y	N	Y	N Y	
	N	Y	N	Y	N Y	
	N	Y	N	Y	N Y	
	N	Y	N	Y	N Y	
	N	Y	N	Y	N Y	
	N	Y	N	Y	N Y	
	N	Y	N	Y	N Y	
	N	Y	N	Y	N Y	
	N	Y	N	Y	N Y	
	N	Y	N	Y	N Y	
	N	Y	N	Y	N Y	
	N	Y	N	Y	N Y	
	N	Y	N	Y	N Y	
	N	Y	N	Y	N Y	
	N	Y	N	Y	N Y	
	N	Y	N	Y	N Y	
	N	Y	N	Y	N Y	
	N	Y	N	Y	N Y	

K:\fd\guideline\drt206

ATTACHMENT 'A'

CALL-OUT WORK RECORD

Date: _____

Dept: _____

Name of Person conducting Call-Out _____

Individual Called Out	Have You consumed in Past 5 Hours?		Are you Fit For Duty?		Security Notified To Test	Comments, if Any
	N	Y	N	Y	N Y	
	N	Y	N	Y	N Y	
	N	Y	N	Y	N Y	
	N	Y	N	Y	N Y	
	N	Y	N	Y	N Y	
	N	Y	N	Y	N Y	
	N	Y	N	Y	N Y	
	N	Y	N	Y	N Y	
	N	Y	N	Y	N Y	
	N	Y	N	Y	N Y	
	N	Y	N	Y	N Y	
	N	Y	N	Y	N Y	
	N	Y	N	Y	N Y	
	N	Y	N	Y	N Y	
	N	Y	N	Y	N Y	
	N	Y	N	Y	N Y	
	N	Y	N	Y	N Y	
	N	Y	N	Y	N Y	
	N	Y	N	Y	N Y	
	N	Y	N	Y	N Y	

K:\fd\guideline\drft206

ATTACHMENT "A"

CALL-OUT WORK RECORD

Date: _____ Dept: _____

Name of Person conducting Call-Out _____

Individual Called Out	Have You consumed In Past 5 Hours?		Are you Fit For Duty?		Security Notified To Test	Comments, if Any
	N	Y	N	Y	N Y	
	N	Y	N	Y	N Y	
	N	Y	N	Y	N Y	
	N	Y	N	Y	N Y	
	N	Y	N	Y	N Y	
	N	Y	N	Y	N Y	
	N	Y	N	Y	N Y	
	N	Y	N	Y	N Y	
	N	Y	N	Y	N Y	
	N	Y	N	Y	N Y	
	N	Y	N	Y	N Y	
	N	Y	N	Y	N Y	
	N	Y	N	Y	N Y	
	N	Y	N	Y	N Y	
	N	Y	N	Y	N Y	
	N	Y	N	Y	N Y	
	N	Y	N	Y	N Y	
	N	Y	N	Y	N Y	
	N	Y	N	Y	N Y	

K:\fd\guideline\drft206

ATTACHMENT 6:

Zion Station Table B-1 Staffing Summary

Major Tasks	Position	0 6 5 4	Licenses		0 6 5 4	Licenses		0 6 5 4	Licenses	
			Init E- Plan	Cur- rent		Init E- Plan	Cur- rent		Init E- Plan	Cur- rent
Unit Ops (Field Sup)	Shift Engineer Shift Supv (SRO) Shift Foreman (SRO) CR Operators Aux Operators Other <u>Rad Waste Supv</u>	1 1 2 2		2 1 4 8	- - - -			- - - -		2 1 4 8
Emergency Direction***	STA, SS or designated mgr. Other <u>Shift Eng</u>	1**		1**	-			-	Stab Dir Ops Dir	1 1
Notification/Communication	Communicators Other _____	1			1			2		69
Rad Assessment and Ops Assessment Support	EOF Director Sr. HP Dose Assessor Other _____	-		A-Made	- 1			1		2
Offsite Surveys Onsite (outside) Surveys Inplant Surveys Chemistry/Radiochemistry	HP Techs Chem Techs Other _____	- - 1 1		1 1 1	2 1 1 -			2 1 1 1	RT RT RT CT	2 1 2 3
Technical Support	STA Core/Thermal Hydraulics Electrical Mechanical Other _____	1 - - -		1**	- 1 - -			- - 1 1	Tech Dir Called By Tech Dir	1 1 1 1
Repair and Corrective Actions	Mechanics Rad Waste Operators Electricians I&C Techs Other _____	1** - 1** -			- - 1 1			1 1 1 -		5 1** 5 3
Radiation Protection a. Access Control b. HP Coverage c. Personnel monitoring d. Dosimetry issue	HP Techs Other _____	2**		1**	2			2	RT	4
Firefighting	Fire Brigade Members Other <u>4 Aux Ops/Sup</u>	Per T/S		5**	N/A			N/A		** 5
First Aid	First Aid Qualified Personnel Other _____	2**	IRT ICT	** 2	N/A			N/A		
Security and personnel accountability	Security Personnel Other _____	Per Sec Plan	Safeguard Information		N/A			N/A	Safe Guard Information	1
Totals (Check for Double-Counting)		10		19	11			15		58 +

Notes:

For each unaffected nuclear unit in operation, maintain at least one shift foreman, one control room operator and one auxiliary operator except that units sharing a control room may share a shift foreman if all functions are covered.

May be provided by shift personnel assigned other functions.

Overall direction of facility response to be assumed by EOF director when all centers are fully manned. Director of minute-to-minute facility operations remains with senior manager in technical support center or control room.

May be performed by engineering aide to shift supervisor.

Site: 210NStaffing Levels (per reactor for Plant Ops, per site for all others)
On Shift* 24 Site 30 min 60 min

Major Tasks	Position	0 6 5 4	Licensee		0 6 5 4	Licensee		0 6 5 4	Licensee	
			Init E- Plan	Cur- rent		Init E- Plan	Cur- rent		Init E- Plan	Cur- rent
Plant Ops	Shift Supv (SRO) Shift Foreman (SRO) CR Operators Aux Operators Other <u>RW Foreman</u>	1 1 2 2			- - - -		2 1 4 6 1	- - - -		
Emergency Direction***	STA, SS, or designated mgr. Other <u>Shift Eng</u>	1**			-		1	-	Sta Dir Ops Dir	2
Notification/Communication	Communicators Other <u>RW Sup</u>	1			1		** 1	2		7
Rad Assessment and Ops Assessment Support	EOF Director Sr. HP Dose Assessor Other _____	-			- 1		A Model	1		1 3
Offsite Surveys Onsite (outside) Surveys Inplant Surveys Chemistry/Radiochemistry	HP Techs Chem Techs Other <u>Chem Tech</u>	- - 1 1			2 1 1 -		0 1 0 1	2 1 1 1		4 2 1
Technical Support	STA Core/Thermal Hydraulics Electrical Mechanical Other <u>✓</u>	1 - - -			- 1 - -		1 ** 0 0 0 0	- - 1 1	Tech Dir	1
Repair and Corrective Actions	Mechanics Rad Waste Operators Electricians I&C Techs Other _____	1** - 1** -			- - 1 1		0 1 0 0	1 1 1 -		1 1 1 1
Radiation Protection a. Access Control b. HP Coverage c. Personnel monitoring d. Dosimetry issue	HP Techs Other _____	2**			2		1**	2		2
Firefighting	Fire Brigade Members Other _____	Per T/S			N/A			N/A		
First Aid	First Aid Qualified Personnel Other _____	2**			N/A			N/A		
Security and personnel accountability	Security Personnel Other _____	Per Sec Plan			N/A			N/A		1
Totals (Check for Double-Counting)		10			11		18	15		23

Notes:

* For each unaffected nuclear unit in operation, maintain at least one shift foreman, one control room operator and one auxiliary operator except that units sharing a control room may share a shift foreman if all functions are covered.

** May be provided by shift personnel assigned other functions.

*** Overall direction of facility response to be assumed by EOF director when all centers are fully manned. Director of minute-to-minute facility operations remains with senior manager in technical support center or control room.

**** May be performed by engineering aide to shift supervisor.

GSEP CALLOUT CHECKLIST

CLASS _____ EAL NO.: _____ DESCRIPTION: _____

CONTACT 1 (one) DIRECTOR FROM EACH GROUP DATE: _____

TIME: _____

DIRECTOR / GROUP	CLASSIFICATION D U E A S E G E	#	DIRECTOR	HOME PHONE	STA. EXT.	OFFSITE PAGER	ONSITE PAGER	TIME CONT.	ETA	FFD	PB#	KC#
STATION	X	01	WILLIAM KURTH	662-0439	2150	376-5255	SAME				184	8083
		02	KEITH SCHWARTZ	815-675-9434	2212	312-982-4699	SAME				CE19	825
		03	DALE ST CLAIR	815-675-6014	2505	626-6212	SAME				794	5932
		04	ROBERT CASCARANO	498-9748	3973	281-9038	SAME				579	3746
		05	JIM LAFONTAINE	395-8148	2530	644-0204	677				185	3629
		06	BRYANT GIFFIN	838-0546	2214	312-982-4704	328				424	6428
		07	WILL FITZPATRICK	223-6216	2213	376-9179	SAME				829	5215
OPERATIONS	X	08										
		09	MARK CARNAHAN	872-7553	3782	644-2864	332				50	837
		10	NICK VALOS	680-1587	2007	281-4865	336				363	8062
		11	WILLIAM T'NIEMI	566-1109	2216	376-6296	645				353	3148
		12	PAUL CANTWELL	414-877-9587	2217	939-2326	351				430	5715
		13	KARL MOSER	815-675-9828	2215	644-7071	650				21	3570
TECHNICAL	X	14	RONALD NIEDERER	244-2056	3862	281-9041	590				546	1977
		15	MIKE MANNING	360-9098	2901	644-5349	507				436	2750
		16	GORDON BEALE	223-9249	2681	644-3450	SAME				623	6751
RAD PROTECTION	X	17	GREG KASSNER	263-1594	2049	00565	398				160	4006
		18	BRENT ROBINSON	414-694-0299	2835	644-3101	975				487	3041
		19	RICK LABURN	265-9765	2911	644-1704	998				428	1164
ENVIRONS	X	20	RICHARD JOHNSON	414-694-3957	3116		625				164	4550
		21	RODNEY BAUMAN	414-697-3409	2696		661				154	5838
		22	ZIRNHELT ERIC	398-2881	2028		907				816	7026
T.	X	23	DAVE BUMP	746-7455	2221	376-3158	346				798	1191
		24	ROBERT C. JOHNSON	356-8464	3790	376-2447					165	5277
		25	ELMORE FALB	815-675-9312	2875	281-9434					912	7109
		26	LARRY SIMON	414-537-4925	2221	376-3136					16	4680
OSC DIRECTOR	X	27	K. DEPPERSCHMIDT	356-5485	2275	644-8632	SAME				74	5132
		28	TOM FLOWERS	414-843-2985	2493	376-3075	144				96	4991
		29	JOHN BRANDES	414-537-2904	2037	376-3157	511				34	2736
ASSTISTANT STATION DIRECTOR	X	30	TIM KOLENO	414-658-2590	784202						176	2667
		31	WILLY STONE	414-553-9596	2246	644-7485					475	5562
		32										
CHEMISTRY	X	33	BRENT SCHRAMER	249-5036	2536	376-4456					309	3026
		34	MIKE BEAUMONT	395-2406	2695	644-3316	713				632	3740
		35	HELENA KARNEZOS	847-509-0686	2558						876	6278
ODCS SPECIALIST	X	36	ROGER BOYCE	414-652-1442	2102	2510	670				32	4380
		37										
		38	MARLON HAGEN	872-7208	2101		418				221	1823
SECURITY	X	39	MARTY PHALEN	265-6929	2974		980				201	7002
		40	BEN HIGGINBOTTOM	746-6642	2054	281-2340	331				141	3265
		41	ANDY TORREZ	414-694-7946	2265	376-0498	092				354	3419
ADMIN	X	42	SAL DELLA FAVE	630-554-2238	2264	644-1140					339	6652
		43	MIKE PETERSEN	414-697-3214	2267	644-5536					137	5541
		44	SUZANNE MIKA	223-7439	2263	376-6197					336	4547
		45	KRISTA STEELE	625-1366	2261	281-2685	SAME				79	7750
OSC SUPERVISOR	X	46	RANDY ROBARGE	414-942-0898	3067	644-6641	001				673	133
		47	MARK SERPE	414-652-2144	2241	281-5505	667				502	1183
		48	DAVE HEATH	815-675-6004	2241	281-5709	574				452	1447
		49	MIKE DAVIS	855-2173	3801	376-4015	100				70	2978
		50	JOHN MEYERS	815-675-9113	2556	376-4020	673				610	4698
HUMAN COMM.	X	51	KEVIN KELLY	395-5368	2833	644-3314	388				466	1650
		52	MIKE ZEIN	395-1489	2834		774				413	5912
		53	WAYNE CRAMER	815-675-6159	2106						63	6365
		54	LEN GESIAKOWSKI	414-843-3640	2648	644-2038	580				107	5365

* STATION DIRECTOR AND OPERATIONS DIRECTOR CALLED ONLY ON SHIFT ENGINEER'S ORDERS FOR EVENT NOTIFICATION
00 = TEST NUMBER

GSEP CALLOUT CHECKLIST

ACT A MINIMUM OF SIX (6) COMMUNICATORS FROM THE FOLLOWING LIST: D, A, SE, GE																
DIRECTOR /GROUP	CLASSIFICATION D U E A S E G E					#	DIRECTOR	HOME PHONE	STA. EXT.	OFFSITE PAGER	ONSITE PAGER	TIME CONT.	ETA	FFD	PB#	KC#
COMM	X			X	X	X	55									
							56	BERND RENDALL	731-1107	2013		819			290	6696
							57	CARL SCHULTZ	872-5141	784206	644-5550				312	3734
							58	THOMAS WEIS	414-694-0563	3309	376-3170				596	5995
							59	SCOTT MEHULA	746-5262	2608					929	2921
							60	ROBERT DAHL	414-605-0145	784223					203	7487
							61	PAUL GEDDES	662-8256	784217					628	1012
							62	DAVE MCEWEN	872-1387	2319					222	5982
							63	ROBERT SHEPERD	414-694-9647	783433					324	4243
							64	HARAL LOGARAS	746-5032	2683		984			30	3801
							65	CHUCK ZOIA	414-697-9648	784312					925	2913
							66	JEFFREY BRUNNER	414-694-6024	2876		366			490	4381
							67									
							68									
							69	GERALD HARBIN	414-551-9793	3185	644-6976	339			125	6763
							70	DAVID KALEY	414-694-8197	2615		320			169	6967
							71	GEORGE ROWE	395-7393	3183	644-4798				302	6165
							72	ARCHIE LUCKY	414-551-7211	784256					202	4839
							73	ROBERT MAICKE	395-6261	2167		349			237	7852
							74									
							75	DALE FRIE	414-279-6429	784261					535	681
							76	GEORGE KEENE	414-857-2648	2618		235			172	57

D — DRILL
UE — UNUSUAL EVENT
A — ALERT
A, SE, GE MESSAGE:

SE — SITE EMERGENCY * — PHONE CONTROLLER NUMBER
GE — GENERAL EMERGENCY X — NOTIFICATION REQUIRED

This is Zion Station Security, a GSEP event EAL # _____ which has been classified as an Alert, Site Emergency, General Emergency has occurred at Zion Station. Your immediate presence is required. Have you consumed any alcohol in the last five (5) hours? Are you fit for duty?

If YES, to the two (2) previous questions, inform individual to report to security for breath alcohol test.

DRILL MESSAGE:

THIS IS A DRILL! This is Zion Station Security, this is a GSEP call-out drill, Please indicate your arrival time if you had to report to the station. Have you consumed any alcohol in the last five (5) hours? Are you fit for duty?
THIS IS A DRILL!!

FFD QUESTIONS:

- 1 = NO Alcohol / YES Fit For Duty
- 2 = YES Alcohol / YES Fit for Duty (Badge on Security Hold, if required)
- 3 = YES Alcohol / NOT Fit For Duty
- 4 = NO Alcohol / NOT Fit For Duty

To page off-site pagers:

For 7 digit pagers: Dial pager #, then dial call back number. For 312 area codes, dial 1-312
For 708 area codes, dial 1-708
For 5 digit pagers: Dial 249-2190, dial pager #, dial call back number

To page on-site pagers:

1. Dial 2434 or 2512
2. Dial pager number
3. Dial 7
4. Dial call back number and Hang up.

EP: Sydney Lanes 10-1-96

NOTE: Some personnel use an on-site pager away from the station.
These pagers will operate up to ten (10) miles from the station.

ACTIVATION OF THE GSEP STATION GROUP

EPIP 320-1

TABLE OF CONTENTS

<u>SECTION</u>	<u>TITLE</u>	<u>PAGE</u>
	Table Of Contents	1
A.	Purpose	2
B.	Scope	
C.	References	
D.	Prerequisites	
E.	Precautions	
F.	Limitations and Actions	
G.	Procedure	3
		4
	Callout Procedure Checklist	5
	Prioritized Notification Listing	6
		7
		8
		9
		10
H.	Footnotes	11
I.	Appendices	
J.	Attachments	
	Attachment A: Emergency GSEP Participation Approval Form	12

This procedure contains 12 pages.

Authorization
SEP 11 1996

Revision
11

SEP 11 1996

ACTIVATION OF THE GSEP STATION GROUP

A. PURPOSE

The purpose of this procedure is to ensure a quick activation of the GSEP Station Group.

B. SCOPE

This procedure applies to the acting Station Director, Security Supervisor and other TSC Directors would notify the GSEP Station Group to activate the TSC and OSC during a GSEP event.

C. REFERENCES

1. GSEP, Figure 4.2.1 page 4-8
2. NO Directive NOD-EP.02
3. ZAP 1130-00, Commonwealth Edison Fitness For Duty Program.

D. PREREQUISITES

None

E. PRECAUTIONS

1. Unscheduled call-outs will be in compliance with ZAP 1130-00, Commonwealth Edison Fitness For Duty Program.

F. LIMITATIONS AND ACTIONS

1. An unannounced off-shift notification drill will be held at least every six months.
2. Procedure to be updated quarterly by GSEP Coordinator. Any changes of personnel or phone numbers prior to the quarterly update will be noted on the Security GSEP Callout Checklist.

SEP 11 1996

G. PROCEDURE

1. Shift Engineer will classify the accident per EAL's in EPIP 330-1 or "A-Model" report.
2.
 - a. Shift Engineer will notify the Duty Operating Engineer.
 - b. Shift Engineer will notify the Security Supervisor in the Secondary Alarm System (SAS) x 2710 as to which directors to call per enclosed callout checklist and give classification, EAL # & description.
 - c. Shift Engineer at ALERT or above, will assign Operators with no Control Room functions to staff the OSC.
 - d. Shift Engineer at ALERT or above, will notify duty MM, IM, EM Supervisor and request that they staff the OSC (Operational Support Center). Required staffing is 2 IM's with supervisor, 4 EM's with supervisor and 4 MM's with supervisor. If duty Supervisor's are not on site, initiate callout using on-call Supervisor list.
 - e. Shift Engineer at ALERT or above, will notify the Radiation Protection Supervisor and Chemistry Supervisor to callout RP and Chemistry personnel to man the OSC. Minimum required personnel are 9 RPT's and 3 CT's. If Duty Supervisors are not on site, initiate callout using On-call Supervisor List.

NOTE

Unscheduled call-outs will be in compliance with ZAP 1130-00 "Commonwealth Edison Fitness For Duty Program", to ensure personnel are fit for duty.

3. Security Supervisor in SAS will commence calling out personnel, per Prioritized Notification Listing. (Security GSEP callout list.) Use home phone numbers for after hours or in-plant extensions when personnel are on site.
4. Security Supervisor will use the following message when directors are called:
 - a. For Unusual Event
"A GSEP event (give EAL#) which has been classified as an Unusual Event has occurred at Zion Station. Please contact the Shift Engineer."
 - b. For Alert, Site Emergency or General Emergency
"A GSEP event (give EAL#) which has been classified as an (Alert, Site Emergency or General Emergency) has occurred at Zion Station. Your immediate presence is required."

SEP 11 1996

G. PROCEDURE (Continued)

5. Security Supervisor will also record the time each director is contacted, on the GSEP Callout Checklist.
6. Technical Director at ALERT or above will contact 1 person from each of the following groups to report to the Station; Nuclear, Electrical and Mechanical.
7. Maintenance staff will be notified, as needed, by the Maintenance Director.
8. Quality Verification will be notified by Operations Director.
9. GSEP Coordinator will be notified by the Administrative Director.
10. Westinghouse site representative will be notified by the Operations Director.
11. The Administrative Director at ALERT or above will callout additional personnel from the Communications Staff to man the TSC phones, arrange for shift relief and continual manning of the station under the direction of the Station Director.

SEP 11 1996

CALLOUT PROCEDURE CHECKLIST

Classification

	Unusual Event	Alert	Site Emergency	General Emergency
Station Director *(Duty Station Manager)	X	X	X	X
Operations Director *(Duty Operating Engineer)	X	X	X	X
Technical Director		X	X	X
Assistant Station Director		X	X	X
Radiation Protection Director		X	X	X
Enviorns Director		X	X	X
Maintenance Director		X	X	X
OSC Director		X	X	X
Chemistry Director		X	X	X
ODCS Specialist		X	X	X
Security Director		X	X	X
Admin Director		X	X	X
OSC Supervisor		X	X	X
Communicators		X	X	X

X indicates these people must always be contacted

* contacted by Shift Engineer; remaining Director's contacted by Security.

blank indicates that these people are called on an as needed basis

NOTE: The minimum Staff for the Technical Support Center is as follows:

- 1) Station Director
- 2) Operations or Technical Director
- 3) Radiation Protection Director or Enviorns Director
- 4) One other Director or Communicator

Units in Modes 1, 2, 3, 4 or 7

<u>Position</u>	<u>No Unit</u>	<u>Unit 1 or Unit 2</u>	<u>Unit 1 and Unit 2</u>
Shift Engineer or Shift Foreman	1	1	2
Shift Control Room Engineer	None	1	1
Nuclear Station Operator	2	3	3
Equipment Operator or Equipment Attendant	2	3	4
Radiation Protection Person	1	1	1
TOTAL	6	9	11
MINIMUM*	6	8	10

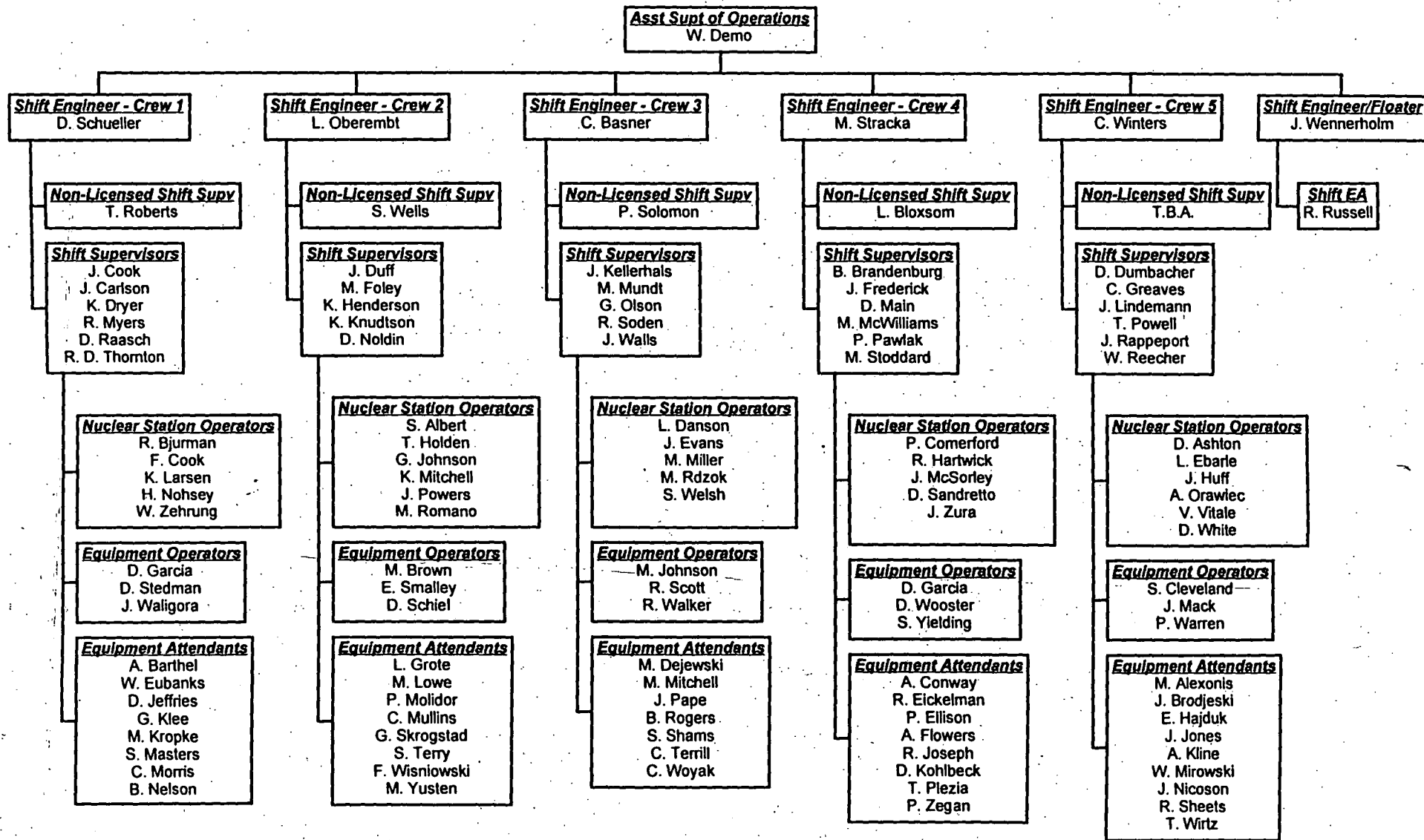
*The minimum number refers only for the case of shift shortage, caused by a sudden sickness or home emergency.

NOTES:

1. Senior Reactor Operator (SRO) shall be present on-site at all times when there is fuel in the reactor.
2. An NRC licensed individual shall be in the control room at all times whenever fuel is in either reactor.
3. Two NRC licensed individuals shall be in the control room during reactor startups, shutdowns, operation, and other periods such as planned control rod manipulations.

MINIMUM SHIFT CREW COMPOSITION
Figure 6.1-1

Shift Organization
As of August 19, 1996



FIN Team
M. Serdar

Training
D. Elston
J. Leach
G. Marquart
J. Melius
K. Moses
P. Schutz