



UNITED STATES
NUCLEAR REGULATORY COMMISSION

REGION IV

611 RYAN PLAZA DRIVE, SUITE 400
ARLINGTON, TEXAS 76011-8064

October 7, 1996

Mr. J. S. Perry
Site Vice President
Dresden Nuclear Power Station
Commonwealth Edison Company
6500 North Dresden Road
Morris, IL 60450

Dear Mr. Perry:

SUBJECT: SEPTEMBER 30, 1996, ENTRANCE MEETING

This refers to the public entrance meeting conducted at the Dresden Nuclear Power Station on September 30, 1996. This meeting was held to discuss the scope, objectives, schedule, and conduct of the NRC's Independent Safety Inspection of the Dresden Nuclear Power Station, Units 2 and 3. The details of the Entrance Meeting are provided in Enclosure 2.

In accordance with Section 2.790 of the NRC's "Rules of Practice," Part 2, Title 10, Code of Federal Regulations, a copy of this letter will be placed in the NRC's Public Document Room.

Should you have any questions concerning this matter, we will be pleased to discuss them with you.

Sincerely,


Samuel J. Collins
Deputy Regional Administrator

Enclosures:

1. Attendance List
2. NRC Presentation

cc w/Enclosures:

D. A. Sager, Vice President,
Generation Support
Commonwealth Edison Company
Executive Towers West III
1400 Pus Place Suite 300
Downers Grove, IL 60515

Docket No. 50-237
Docket No. 50-249

NRC FILE CENTER COPY

9610230093 961007
PDR ADOCK 05000237
Q PDR

cc w/Enclosures: (cont'd)

H. W. Keiser, Chief Nuclear
Operating Officer
Commonwealth Edison Company
1400 Opus Place
Downers Grove, IL 60515

T. Nauman, Station Manager Unit 1
Dresden Nuclear Power Station
6500 North Dresden Road
Morris, IL 60450

M. Heffley, Station Manager Units 2 and 3
Dresden Nuclear Power Station
6500 North Dresden Road
Morris, IL 60450

F. Spangenberg, Regulatory Assurance
Manager
Regulatory Assurance Supervisor
Dresden Nuclear Power Station
6500 North Dresden Road
Morris, IL 60450

D. Farrar, Nuclear Regulatory
Services Manager
Commonwealth Edison Company
Executive Towers West III
1400 Opus Place Suite 300
Downers Grove, IL 60515

Richard Hubbard
MHB Technical Associates
1723 Hamilton Avenue
Suite K
San Jose, CA 95125

Nathan Schloss, Economist
Office of the Attorney General
Public utilities Division
100 West Randolph 12th Floor
Chicago, IL 60601

State Liaison Officer
State of Illinois
1035 Outer Park Drive
Springfield, IL 62704

Chairman, Illinois Commerce Commission
Public Utility Commission
527 East Capitol Avenue
Springfield, IL 62706

Document Control Desk-Licensing
Commonwealth Edison Company
1400 Opus Place Suite 400
Downers Grove, IL 60515

Distribution:

Public

~~DDP/Central Files~~

WTaylor, EDO, O-17G21
JMilhoan, EDO, O-17G21
HThompson, EDO, O-17G21
VMcCree, EDO, O-17G21
BMcCabe, EDO, O-17G21
EDO R/F, O-17G21
FCongel, AEOD, T-4D28
SRubin, AEOD, T-4D28
EJordan, AEOD, T-4D18
FMiraglia, NRR, O-12G18
ATHadani, NRR, O-12G18

RZimmerman, NRR, O-12G18
RGallo, NRR, O-9A1
FGillespie, NRR, O-12G18
WOrmstead, OGC, O-15B18
RBangart, OSP, O-3D23
JLieberman, OE, O-7H5
WBeecher, OPA, O-2G5
GCaputo, OI, O-2G5
HBell, OIG, O-3E4
HMiller, RI
JLinville, RI
SEbneter, RII

ABeach, RIII
PHiland, RIII
RLickus, RIII
PAO RIII (2)
LCallan, RIV
JPellet, RIV
WJones, RIV
HWong, RIV
Dresden File, RIV

DOCUMENT NAME: P:\DRESDEN\SUM.930

ISI TL	ISI TM
ATHowell/ajg	SJCollins
10/1/96	10/7/96

OFFICIAL RECORD COPY

IE45 1/1

230023

INDEPENDENT SAFETY INSPECTION ENTRANCE MEETING

LICENSEE/FACILITY	Commonwealth Edison Company Dresden Nuclear Power Station, Units 2 and 3	
DATE/TIME	September 30, 1996, 10 a.m. (CDT)	
LOCATION	Dresden Nuclear Power Station Training Center Morris, IL	
NAME (PLEASE PRINT)	ORGANIZATION	TITLE
Brian Borch	Sargent & Lundy	Site Manager
Steve Stiles	CECo	Instrument Maint Master
Mike Laani	Sargent & Lundy	
SAUL KALCH	COMED	ELECTRICAL LEAD
Frank Turbeville	MAINT	ASST MAINT
CHUCK VANDERDIET	USIDRE	SRT DRESDEN
Pat Liland	NRC	Branch Chief
Shyam Dula	GE	Project Manager
Demetrius L. Willis	COMED	ELECTRICAL MASTER
James O'Connor	COMED	Chairman
R. Kundalkar	COMED	Eng. Manager
R. W. Tsai	COMED	NFS BWR Safety Analysis Supervisor
DW BLACOWSKI	DRESDEN MWD	FIRST LINE SUPERVISOR
L. E. Cruise	COMED	NSO ops Steward
Robert Schlichter	ISI Entrance	IDWS

Open to Public

INDEPENDENT SAFETY INSPECTION ENTRANCE MEETING

LICENSEE/FACILITY	Commonwealth Edison Company Dresden Nuclear Power Station, Units 2 and 3	
DATE/TIME	September 30, 1996, 10 a.m. (CDT)	
LOCATION	Dresden Nuclear Power Station Training Center Morris, IL	
NAME (PLEASE PRINT)	ORGANIZATION	TITLE
T.L. NAUMAN	Com Ed	UNIT-1 PLANT MANAGER
R.P. Thrown	Com Ed	Ops Trng Sup
C.A. Tromes	Com Ed	Services Director
M.M. DILLON	Com Ed	FIRE MARSHAL DRESDEN
J.F. Stang	WRC/WRR	Project Manager
H.J. Wingo	NRC / DRESDEN FSI	Env. Area Coord
MARK SCHIMMEL	Com Ed	SITE CONSTRUCTION SUPERVISOR
CLIFF HOWLAND	Com Ed	RPM (RP Manager)
Mark Falcone	Com Ed	Nuclear Ops Staff
John M. Almet	Com Ed	Quality First Administrator
R. Finner	Com Ed	Plant Eng Supt
DAVID W. Jenkins	Com Ed	General Attorney
JIM LUTZ	CR. Co. ESDA	COORDINATOR
JIMMY SEIDITH	ENVIRO LAW POLICY CENTER	FINANCIAL ANALYST
MIKE HEFFLEY	Com Ed / DRESDEN	STATION MGR

Open to Public

INDEPENDENT SAFETY INSPECTION ENTRANCE MEETING

LICENSEE/FACILITY	Commonwealth Edison Company Dresden Nuclear Power Station, Units 2 and 3	
DATE/TIME	September 30, 1996, 10 a.m. (CDT)	
LOCATION	Dresden Nuclear Power Station Training Center Morris, IL	
NAME (PLEASE PRINT)	ORGANIZATION	TITLE
Bob Holbrook?	US-NRC	Inspector ISEE Team
Joe Williams	Com Ed	Eng. Programs Supervisor
Tim [unclear]	IDNS	Observer
ALWYN SETTLES	IDNS	Resident Inspector
Steve Kuczynski	Com Ed	Shift Operations Sup.
NEILL HOWLEY	IDNS	ASST MGR - ONES
Thomas Pindexter	Winstone & Strawn	Attorney
Shirley Lambros	Ceco	Clerical Steward
Rose Throne	Com Ed	Clerical Steward
John Waters	Com Ed	Proc. Mgr
OMAR MAZZONI	NRC	ISI INSPECTOR
GEORGE KALMAN	NRC	ISI
CY CRANE	NRC/CONTRACTOR	ISI
JOE FAMIGLIETTI	COMED	ISI
TOM MAIMAN	Com Ed	D.G.

Open to Public

INDEPENDENT SAFETY INSPECTION ENTRANCE MEETING

LICENSEE/FACILITY	Commonwealth Edison Company Dresden Nuclear Power Station, Units 2 and 3	
DATE/TIME	September 30, 1996, 10 a.m. (CDT)	
LOCATION	Dresden Nuclear Power Station Training Center Morris, IL	
NAME (PLEASE PRINT)	ORGANIZATION	TITLE
Michael Pacifico	CoCo	D3R14 Outage Manager
JACK BRONS	ComEd	VP NUC SUPPORT
Jim Richardson	ComEd	Human Resources Supervisor
H. J. Huck	ComEd	PMT LEAD
G-Tietz	ComEd	SES Lead
J. Dawe	ComEd	ISI MECH. COORDINATOR Des Eng' LEAD
J. Kocok	ComEd	Materials Manager onsite
F. Kochalka	ComEd	STORES STEWARD
P. Swafford	ComEd	Maintenance Supt.
T. ESPEY	I. D. W. S.	Inspector/Observer
J. Viane	ComEd	Instrument Maintenance
D Williams	ASTA/ComEd	EMD GF
L Jordan	ComEd	Tech Trng Supv.
HW Keiser	ComEd	CHOC
RW MONTROSS	MONTROSS CONSULTING	ISI

Open to Public

INDEPENDENT SAFETY INSPECTION ENTRANCE MEETING

LICENSEE/FACILITY	Commonwealth Edison Company Dresden Nuclear Power Station, Units 2 and 3	
DATE/TIME	September 30, 1996, 10 a.m. (CDT)	
LOCATION	Dresden Nuclear Power Station Training Center Morris, IL	
NAME (PLEASE PRINT)	ORGANIZATION	TITLE
WE Boos	MCCE	Atty
Ken Ross	ComEd	Des start Comm
John Williamson	ComEd	Long Range Load Control
James A. Isom	U.S.N.R.C.	OPERATIONS ENGINEER
Tom Foley	U.S.N.R.C.	ST. OPS ENGINEER TM LGL
BOB DUNN	COMED MAINT	VALVE TEAM PROJECT MANAGER
ED CONWELL	COMED	DES. ENG. SUPT.
Ed FAHEY	COMED	Change Manager
Tim Varbanc	COMED	Maintenance Self-Assignment Coordinator
Gregory Howard	COMED	I&C Counter Part
Bob Rymer	COMED	SQU AUDITOR
John Pellet	NRC	Branch Chief
J S PERRY	COMED	SVP Preside
Ron Wiggins	COMED	DRESDEN IM MASTER
Ken Quinn	COMED	Dresden IM Supervisor

Open to Public

INDEPENDENT SAFETY INSPECTION ENTRANCE MEETING

LICENSEE/FACILITY	Commonwealth Edison Company Dresden Nuclear Power Station, Units 2 and 3	
DATE/TIME	September 30, 1996, 10 a.m. (CDT)	
LOCATION	Dresden Nuclear Power Station Training Center Morris, IL	
NAME (PLEASE PRINT)	ORGANIZATION	TITLE
MARY ANN BIANONTE	NRC	TRNG: ASSESSMENT SPEC
SAM GOWINS	NRC	TEAM MANAGER
JOHN NOCAN	SAL	ISI SUPPORT PLANNING
Kirk Peterman	Com Ed	Project Controls Supv
Craig Massey	Com Ed	R.P. Technician
Bill Stoffels	Com Ed	General Foreman MHD
Dave Volden	Com Ed	OPS
Dan Barrett	Com Ed	ISI Response Team
LARRY COYLE	Com Ed	Ops Shift Manager
J.W. RESZUTEN	Com Ed	Engineer
Louis A. Meintel	Com Ed	Outage Management WC
Claude E. Jones	USNRC	Reactor Inspector
William B. Jones	USNRC	ISI Maintenance Functional Lead
Dennis Winchester	SOV Com Ed	SOV Director
Barbara Brinsworth	Com Ed	OUTAGE/WC LIASON

Open to Public

INDEPENDENT SAFETY INSPECTION ENTRANCE MEETING

LICENSEE/FACILITY	Commonwealth Edison Company Dresden Nuclear Power Station, Units 2 and 3	
DATE/TIME	September 30, 1996, 10 a.m. (CDT)	
LOCATION	Dresden Nuclear Power Station Training Center Morris, IL	
NAME (PLEASE PRINT)	ORGANIZATION	TITLE
FRANK SPANGENBERG	ComEd	Mgr. Rg. Assumun
GARY WALD	ComEd	Comm. Services
Art Hawell	US NRC RIV	ISI Team Leader Dep. Director, DRP, RIV
CAROL GORDON	US NRC RIV	ISI Team Administrative Asst
Paul Planing	ComEd	ISI Response Team
LON WALDINGER	ComEd	Nuclear Oversight Mgr
Robert Zrusek	G.E.	ComEd Expert Panel
Jan Strassma	NRC	PUBLIC AFFAIRS OFFER
Dan Dumes	ComEd	PUBLIC AFFAIRS DIRECTOR
GARY ABRELL	ComEd	ISI RESPONSE TEAM
PAT MURRAY	ComEd	ISI response team
Valerie Barnes	NRC ISIT	ISIT M40 team
DANIEL R. SZUMSKI	ComEd Dresden	ISIT ENGINEERING TEAM
PATRICK J. BOYLE	ComEd - RAD. PR.	LEAD OP. HEALTH PHYSICIST/AURA
Laszlo LatKoczy	ComEd.	Site Maintenance Rule Owner

Open to Public

INDEPENDENT SAFETY INSPECTION ENTRANCE MEETING

LICENSEE/FACILITY	Commonwealth Edison Company Dresden Nuclear Power Station, Units 2 and 3	
DATE/TIME	September 30, 1996, 10 a.m. (CDT)	
LOCATION	Dresden Nuclear Power Station Training Center Morris, IL	
NAME (PLEASE PRINT)	ORGANIZATION	TITLE
DeAnna Biagioni	DRESDEN / CONED	Comm. Specialist
Gary Beckholdt	DRESDEN / IMM	Gen Supv
HAL DADD	DRESDEN OPERATIONS	Nuclear Station Operator
Terry Foster	DRESDEN / WC	Outage / WC Mgr
Jeff Bandurski	Dresden / Finca	Financial Director
CHARLES PETRONE	NRC / NRR	SR REACTOR ENGINEER
W Gary Harland	Work Control	Work Control Supv.
Peg Leachy	Admin	Supervisor - CF
LARRY KILHAM	S&V	S&V TROTT Supv.
Pat Furetti	Admin	Supervisor - Admin
Wsa Delimata	OFC SVP	Admin. Assoc.
Steve Barrett	OFC SVP	Assessor
John Nosko	DRESDEN / CONED	PERF Mon. Gr. Lead
Tim Olenick	DRESDEN / ops MNGR	ops MNGR
MIKE SHANNON	U.S. NRC	RADIATION SPECIALIST

Open to Public

INDEPENDENT SAFETY INSPECTION ENTRANCE MEETING

LICENSEE/FACILITY	Commonwealth Edison Company Dresden Nuclear Power Station, Units 2 and 3	
DATE/TIME	September 30, 1996, 10 a.m. (CDT)	
LOCATION	Dresden Nuclear Power Station Training Center Morris, IL	
NAME (PLEASE PRINT)	ORGANIZATION	TITLE
M. SHLYAMBERG	NRC /CONSULT	CONSULTANT
J. PURRAZZO	ComED	P.M.
J. Hosmer	ComED	Env. VP
Lou CILUFFINI	ComED	NSO
R. Temple	ComED	Assoc. Attorney
TERRY RIECK	COMED	CHIEF NUCLEAR ENG'G
Donald Maue	IMD-ComEd	I.M. Sup.
MICHAEL EMBREE	BURNS SECURITY	DISTRICT MANAGER
Bob Rybick	ComED	NLA
J. ROSENFELD	WLS-TV	Reporter
Tom Kammer	"	Crew

PREDECISIONAL ENFORCEMENT CONFERENCE ATTENDANCE

LICENSEE/FACILITY		
DATE/TIME		
CONFERENCE LOCATION		
EA NUMBER		
NRC REPRESENTATIVES		
NAME (PLEASE PRINT)	ORGANIZATION	TITLE
JAMES LINVILLE	USNRC	MFO TEAM LEADER
Brian Bunte	ComEd	Senior Staff Engineer
WALT SMITH	COM ED / SEL	Project Engineer
Myra Frezer	ELPC	attorney
Phil GRACHIN	ComED/DRESDEN	SECURITY ADMINISTRATOR
Arup Behar	KCI / ComEd	Electrical Engineer
MIKE DZIUBAN	ComED	B Operator Strauss
Mike Owens	Contractor	Elec Maint

NRC

INDEPENDENT SAFETY INSPECTION

OF THE

DRESDEN NUCLEAR POWER STATION

PUBLIC ENTRANCE MEETING

SEPTEMBER 30, 1996

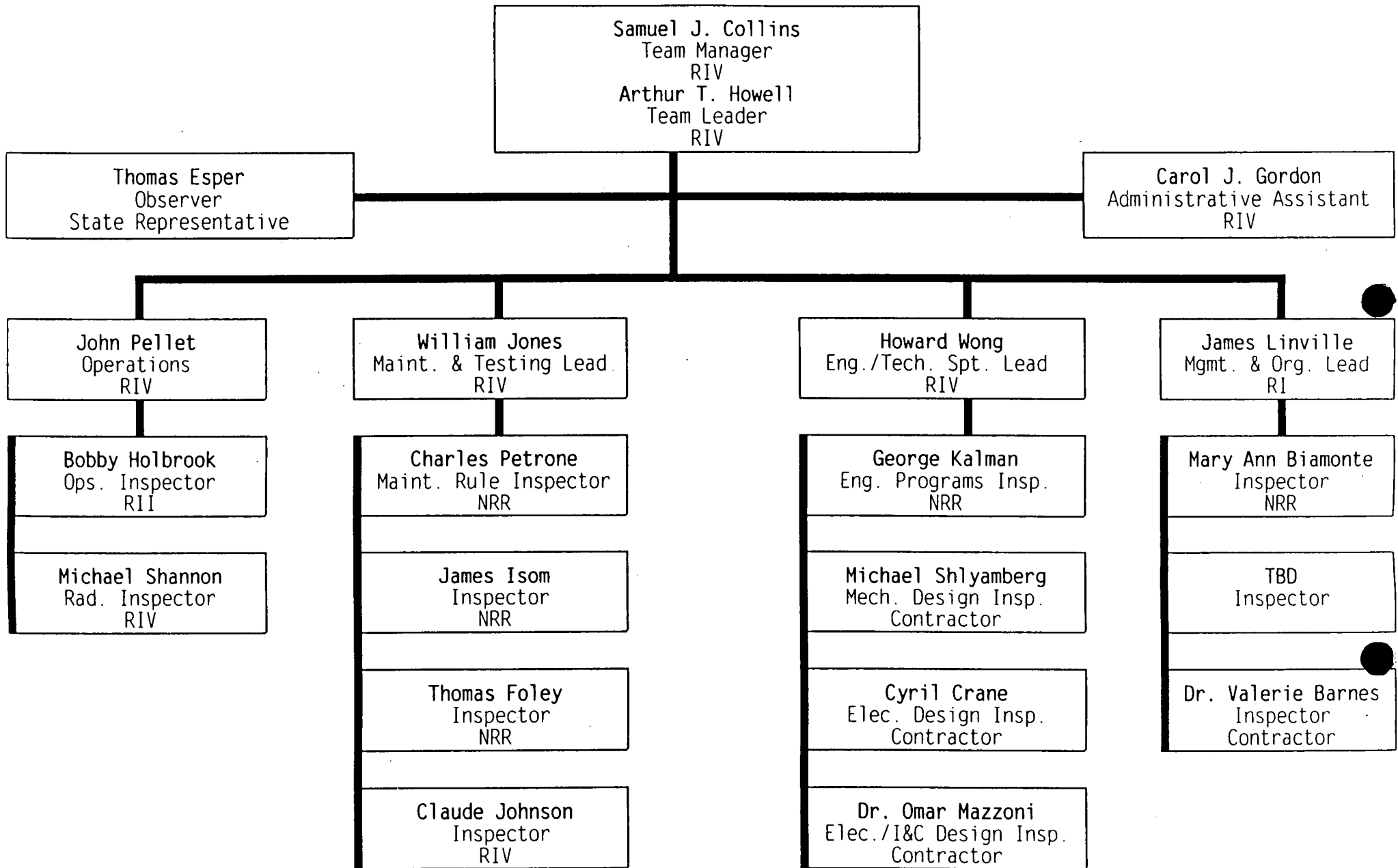
BACKGROUND

- RECOGNIZED CYCLIC PERFORMANCE AT DRESDEN NUCLEAR POWER STATION
- EXTENSIVE PAST NRC REVIEWS CONDUCTED
- CHRONIC NRC WATCH LIST STATUS
- JUNE 1996 NRC SENIOR MANAGEMENT MEETING CONCLUSION TO PERFORM INDEPENDENT SAFETY INSPECTION

OBJECTIVES OF THE DRESDEN INDEPENDENT SAFETY INSPECTION (ISI) TEAM

- EVALUATE THE EFFECTIVENESS OF THE CORRECTIVE ACTION PROGRAMS
- PROVIDE AN INDEPENDENT ASSESSMENT OF CONFORMANCE TO THE DESIGN AND LICENSING BASIS
- EVALUATE THE CONDUCT AND EFFECTIVENESS OF MAINTENANCE ACTIVITIES, INCLUDING:
 - ▶ WORK PROCESSES
 - ▶ POST-MAINTENANCE TESTING
 - ▶ MAINTENANCE RULE ACTIVITIES
- PROVIDE AN INDEPENDENT ASSESSMENT OF OPERATIONAL SAFETY PERFORMANCE

DRESDEN ISI TEAM ORGANIZATION



GENERAL INSPECTION INFORMATION

- INSPECTION PERIOD: SEPTEMBER 30, 1996 TO NOVEMBER 8, 1996
- INSPECTION REPORT NUMBER: 50-237/96-201; 50-249/96-201
- INSPECTION PROCEDURES
 - ▶ IP 93801, "SAFETY SYSTEM FUNCTIONAL INSPECTION"
 - ▶ IP 62706, "MAINTENANCE RULE"
 - ▶ IP 62707, "MAINTENANCE OBSERVATION"
- THE INSPECTION REPORT SHOULD BE ISSUED BY DECEMBER 23, 1996
 - ▶ A SUPPLEMENTAL INSPECTION REPORT WILL BE ISSUED IN 1997 PENDING AN NRC ASSESSMENT OF WORK ACTIVITIES PERFORMED DURING THE UNIT 3 REFUELING OUTAGE. THIS INSPECTION IS TENTATIVELY PLANNED FOR MARCH 1997.

SCHEDULAR MILESTONES

FUNCTIONAL AREA LEADER PREPARATION	AUGUST 13 - SEPTEMBER 27, 1996
TEAM PREPARATION	SEPTEMBER 10 - 27, 1996
PUBLIC ENTRANCE MEETING	SEPTEMBER 30, 1996
FIRST ONSITE PERIOD	SEPTEMBER 30 - OCTOBER 11, 1996
INTERIM EXIT MEETING	OCTOBER 11, 1996
IN-OFFICE REVIEW PERIOD	OCTOBER 15 - 25, 1996
SECOND ONSITE PERIOD	OCTOBER 28 - NOVEMBER 8, 1996
INTERIM EXIT MEETING	NOVEMBER 8, 1996
PUBLIC EXIT MEETING	DECEMBER 12, 1996
ISSUE INSPECTION REPORT	BY DECEMBER 23, 1996
OUTAGE OBSERVATIONS	TO BE DETERMINED
OUTAGE OBSERVATION EXIT MEETING	TO BE DETERMINED
ISSUE SUPPLEMENTAL REPORT	TO BE DETERMINED

FUNCTIONAL AREAS AND SPECIFIC INSPECTION OBJECTIVES

- MANAGEMENT CONTROLS, ORGANIZATIONAL EFFECTIVENESS, AND SAFETY ASSESSMENT/QUALITY VERIFICATION EFFECTIVENESS
 - ▶ IMPROVEMENT INITIATIVES AND CORRECTIVE ACTION PROGRAMS
 - ▶ SELF-ASSESSMENT PROGRAMS
 - ▶ EMPLOYEE CONCERNS PROGRAM
 - ▶ INDUSTRY OPERATING EXPERIENCE
 - ▶ TRACKING AND TRENDING PROGRAMS
 - ▶ OVERSIGHT FUNCTIONS
 - ▶ SHORT- AND LONG-TERM PLANNING PROCESSES

- ENGINEERING, LICENSING, AND TECHNICAL SUPPORT

- ▶ CONFORMANCE WITH LICENSING AND DESIGN REQUIREMENTS
- ▶ DESIGN CHANGES AND MODIFICATIONS
- ▶ AVAILABILITY, USE AND ADEQUACY OF DESIGN INFORMATION
- ▶ OTHER ENGINEERING WORK PRODUCTS
- ▶ BACKLOGS
- ▶ LICENSING COMMITMENTS

- MAINTENANCE AND TESTING

- ▶ WORK CONTROL PROCESS
- ▶ SUSTAINED OBSERVATIONS OF OUTAGE ACTIVITIES
- ▶ REWORK/REPEAT WORK
- ▶ TESTING
 - POST-MAINTENANCE/POST-MODIFICATION
 - SURVEILLANCE, INCLUDING IN-SERVICE AND APPENDIX J TESTING
- ▶ MAINTENANCE RULE IMPLEMENTATION
- ▶ PREVENTIVE/PREDICTIVE MAINTENANCE
- ▶ PROCEDURE COMPLIANCE AND ADEQUACY
- ▶ MATERIAL CONDITION
- ▶ BACKLOGS

- OPERATIONS, TRAINING, AND RADIOLOGICAL PROTECTION

- ▶ CONDUCT OF OPERATIONS
- ▶ PROCEDURE COMPLIANCE AND ADEQUACY
- ▶ OPERATING PHILOSOPHY
- ▶ RADIATION WORKER PRACTICES
- ▶ SOURCE TERM REDUCTION

- COMMON

- ▶ SYSTEM REVIEWS
- ▶ TRAINING AND QUALIFICATIONS
- ▶ PROBLEM IDENTIFICATION AND RESOLUTION, INCLUDING THE EFFECTIVENESS OF PAST CORRECTIVE ACTIONS
- ▶ ORGANIZATIONAL INTERFACES, COMMUNICATIONS, AND RELATIONSHIPS
- ▶ PERFORMANCE STANDARDS AND EXPECTATIONS
- ▶ NOTEWORTHY STRENGTHS
- ▶ PROBABLE ROOT CAUSES
- ▶ POTENTIAL FOR SUSTAINED AND PERMANENT IMPROVEMENT
- ▶ COMPARISON OF ISI FINDINGS TO THE EXISTING INSPECTION RECORD

SELECTED SYSTEMS

- FULL SCOPE

- ▶ 125 VDC ELECTRICAL DISTRIBUTION SYSTEM
- ▶ HIGH PRESSURE COOLANT INJECTION SYSTEM
- ▶ CORE SPRAY SYSTEM

- PARTIAL SCOPE

- ▶ OTHER DC ELECTRICAL DISTRIBUTION SYSTEMS
- ▶ SERVICE WATER SYSTEMS

STATE INVOLVEMENT

- ISI OBSERVATION PROTOCOL BETWEEN THE NUCLEAR REGULATORY COMMISSION AND ILLINOIS DEPARTMENT OF NUCLEAR SAFETY (IDNS)
- IDNS RESIDENT ENGINEER ASSIGNED AS AN OBSERVER
- STATE/COUNTY BRIEFINGS AS NEEDED

INSPECTION SPECIAL FEATURES, PROCESSES AND METHODOLOGIES

1 SPECIAL FEATURES

- ALTHOUGH THIS ASSESSMENT WILL BE SIMILAR TO A DIAGNOSTIC EVALUATION, IT IS AN INSPECTION RATHER THAN A DIAGNOSTIC EVALUATION. THE PRINCIPAL DIFFERENCES BETWEEN A DIAGNOSTIC EVALUATION AND THIS INSPECTION ARE:
 - ▶ THE SCOPE OF CORPORATE REVIEWS AND THE DEGREE OF ROOT CAUSE ANALYSIS WILL BE LIMITED IN COMPARISON TO A DIAGNOSTIC EVALUATION
 - ▶ IF COMPLIANCE ISSUES ARE IDENTIFIED, THEY WILL BE DOCUMENTED IN THE REPORT; HOWEVER, POTENTIAL ENFORCEMENT ISSUES WILL BE PROVIDED TO NRC REGION III FOR FINAL DISPOSITION
 - UNRESOLVED ITEMS
 - DEFICIENCIES
 - ▶ THE OFFICE OF NUCLEAR REACTOR REGULATION HAS PROGRAM OVERSIGHT FOR THIS INSPECTION RATHER THAN THE OFFICE FOR ANALYSIS AND EVALUATION OF OPERATIONAL DATA
 - ▶ THE TEAM MANAGER REPORTS DIRECTLY TO THE EXECUTIVE DIRECTOR FOR OPERATIONS, MR. JAMES TAYLOR
 - ▶ FEE BILLABLE

- THE INDEPENDENT SAFETY INSPECTION IS SIMILAR TO A DIAGNOSTIC EVALUATION IN THE FOLLOWING RESPECTS:
 - ▶ TEAM COMPOSITION AND ORGANIZATION
 - ▶ FUNCTIONAL AREAS REVIEWED
 - ▶ INDEPENDENT OF THE REGION
 - ▶ USE OF CONTRACTORS
 - ▶ TEAM MEMBERS HAVING NO RECENT SIGNIFICANT REGULATORY INVOLVEMENT WITH THE SITE OR THE COMPANY

2 INSPECTION PROCESSES AND METHODOLOGIES

- OBSERVATIONS OF PLANT ACTIVITIES AND PERSONNEL
 - ▶ SUSTAINED CONTROL ROOM OBSERVATIONS
 - ▶ FACILITY TOURS
 - ▶ OPERATOR ROUNDS
 - ▶ WORK IN PROGRESS
 - ▶ LICENSEE MEETINGS
 - ▶ TRAINING/SIMULATOR SESSIONS
 - ▶ PROCEDURE WALK-THROUGHS
 - ▶ DRILLS

- **SYSTEM EVALUATIONS**
 - ▶ SAFETY SYSTEM FUNCTIONAL INSPECTION
 - ▶ SYSTEM WALKDOWNS
- **PROGRAMMATIC EVALUATIONS**
 - ▶ DOCUMENT REVIEWS
- **INTERVIEWS**
 - ▶ FORMAL
 - ▶ INFORMAL
- **CASE STUDY EVALUATIONS**
 - ▶ COMPLEX/SIGNIFICANT ISSUES
 - ▶ ONE OR MORE PER FUNCTIONAL AREA
- **ROOT CAUSE ANALYSIS OF IDENTIFIED WEAKNESSES**
 - ▶ NEW ISSUES AND RECURRING PROBLEMS

ON-SITE DAILY SCHEDULE

- NORMAL WORKING HOURS: 7:00 AM - 6:30 PM
- SHIFT COVERAGE/SIMULATOR: (AS REQUIRED)
- TEAM MANAGER/LEADER COUNTERPART DEBRIEF: 9:00 AM
- FUNCTIONAL AREA LEADER COUNTERPART FEEDBACK: 5:00 PM
- TEAM MEETING: 5:30 PM - 6:30 PM

EXIT MEETINGS

- INTERIM EXIT MEETINGS

- ▶ OCTOBER 11, 1996
- ▶ NOVEMBER 8, 1996
- ▶ OBSERVATIONS AND FINDINGS ONLY -- NO OVERALL CONCLUSIONS OR ASSESSMENT

- EXIT MEETINGS

- ▶ DECEMBER 12, 1996
- ▶ OPEN TO PUBLIC OBSERVATION
- ▶ ADDITIONAL EXIT MEETING FOLLOWING THE OBSERVATION AND ASSESSMENT OF OUTAGE WORK ACTIVITIES