



Commonwealth Edison
 One First National Plaza, Chicago, Illinois
 Address Reply to: Post Office Box 767
 Chicago, Illinois 60690

Control Files

RECEIVED DISTRIBUTION
 SERVICES UNIT

1980 NOV 28 PM 1 17

November 24, 1980
 U.S. NRC SERVICES
 SEARCH

Mr. James G. Keppler, Director
 Directorate of Inspection and
 Enforcement - Region III
 U.S. Nuclear Regulatory Commission
 799 Roosevelt Road
 Glen Ellyn, IL 60137

Subject: Dresden Station Units 2 and 3
 Quad Cities Station Units 1 and 2
 Zion Station Units 1 and 2
 Monthly Report of Status of IE
 Bulletin 79-14 Evaluations
 NRC Docket Nos. 50-237/249, 254/265,
 and 295/304

References (a): J. G. Keppler letter to C. Reed
 dated August 18, 1980.

Dear Mr. Keppler:

In accordance with the request of Reference (a) the following monthly status report is provided for your use regarding the evaluations performed at Dresden, Quad Cities, and Zion Stations in response to IE Bulletin 79-14.

For Zion Station, our evaluation to date has not identified any discrepancies of the type listed in Reference (a).

For Dresden and Quad Cities Stations, the following information is enclosed:

Attachment 1 - List of systems where pipe stress levels for an OBE, as determined by computer analysis, do not exceed one-half of code ultimate stress but do exceed FSAR requirements. Stress isometrics are provided for each system.

8012170 408

Q

NOV 25 1980

Attachment 2 - List of systems designed to the Blume criteria, which require additional supports to meet FSAR design requirements. Also enclosed are the following isometric drawings which were inadvertently omitted from our October 21, 1980, transmittal:

Q2-RHRS-02B, Rev. A

Q1-CRDS-01B, Sketch A1
and A2, Rev. A

D2-CRDS-01B, Sketch A, Rev. C

For this report period, there were no systems identified with stresses that exceed 1/2 of the material ultimate stress at OBE loadings.

Please address any questions concerning this matter to this office.

Very truly yours,



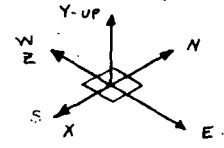
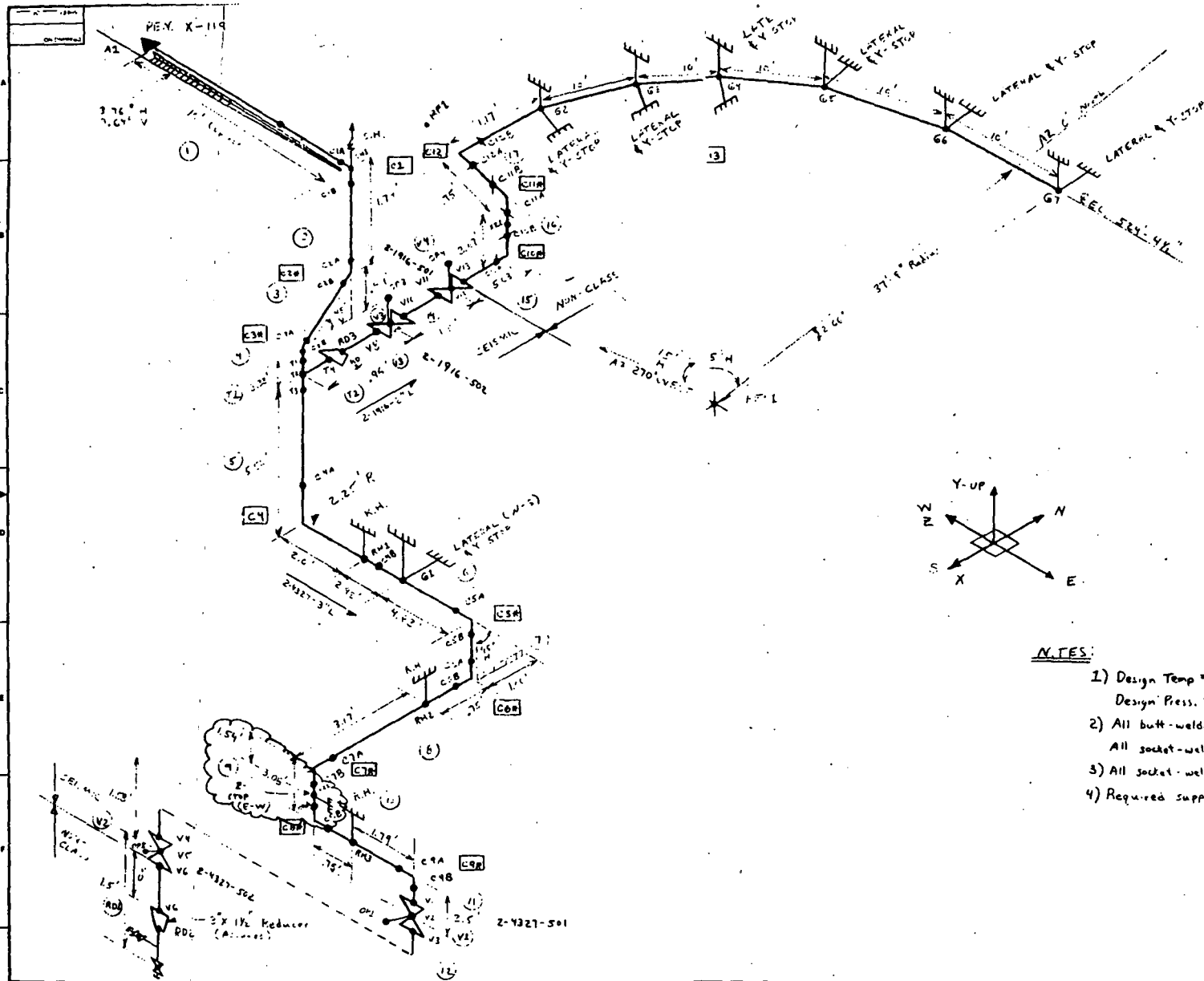
Robert F. Janecek
Nuclear Licensing Administrator
Boiling Water Reactors

cc (w/o att): Director, Division of Reactor
Operations Inspection
RIII Inspector - Dresden
RIII Inspector - Quad Cities
RIII Inspector - Zion

Attachment 1

TABULATION OF PIPING SYSTEMS WITH STRESSES
ABOVE FSAR LEVELS AND BELOW OPERABILITY LIMIT

<u>Plant-Unit</u>	<u>System</u>	<u>Problem No.</u>	<u>Node No.</u>	<u>OBE Primary Stress (PSI)</u>	<u>1.2 Sh</u>	<u>Isometric No.</u>
Dresden 2	WWTR	02B(C)	C7B	18,661	18,000	D2-WWTR-02B(C) Rev. A



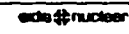
NOTES:

- 1) Design Temp = 120°F
Design Press. = 125 psig.
- 2) All butt-welded piping is sch 40
All socket-welded piping is sch. 80
- 3) All socket-welded fittings are 316/16.
- 4) Required support indicated by ☁

NO.	DATE	DESCRIPTION	DESIGNED	CHECKED	DATE

DRESDEN NUCLEAR STA.
UNIT 2

SCALE	NTPS
JOB NO.	520 102
DRAWING NO.	107
D.	WWTK
C.	CB(6)
DATE	1-10-68

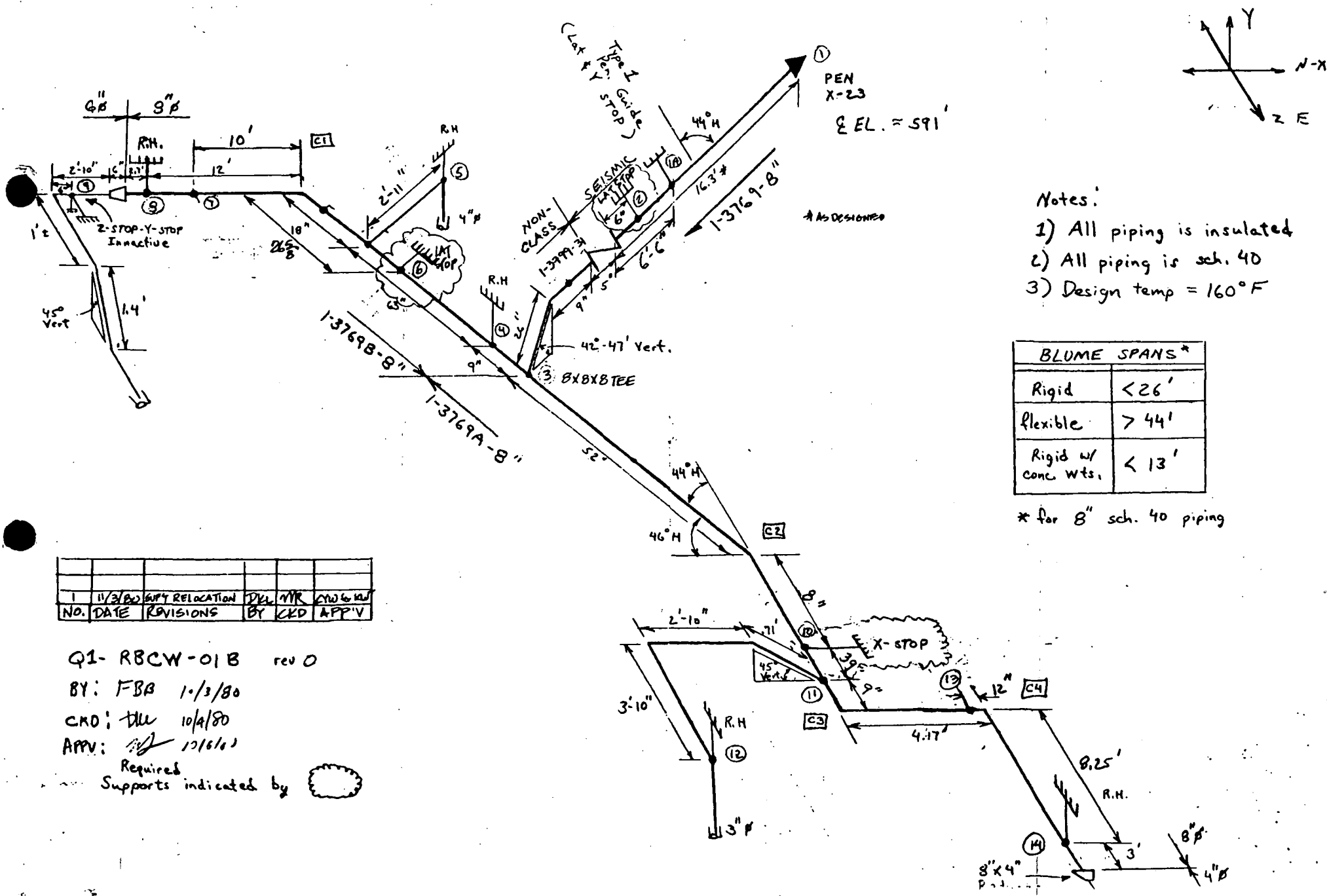


A-10/68 WELLS WATER 16 SYSTEM ERG WTW

Attachment 2

TABULATION OF PIPING SYSTEMS WITH ADDITIONAL SUPPORTS REQUIRED BY BLUME CRITERIA

<u>Plant-Unit</u>	<u>System</u>	<u>Problem No.</u>	<u>Span W/Missing Support (Direction)</u>	<u>Seismic Restraints Required</u>	<u>Isometric No.</u>
Quad Cities Unit 1	CCCD	02B	Seismic/Non-Seismic Class Break	Lat. Stop at 31 Z-Stop at 41 X-Stop at 42 Z-Stop at 43	Q1-CCCD-02B Rev.0
Quad Cities Unit 1	RBCW	01B	Seismic/Non-Seismic Class Break	Lat. Stop at 4 Lat. Stop at 6 Lat. Stop at 10	Q1-RBCW-01B Rev.1
Quad Cities Unit 1	RBCW	02B	Seismic/Non-Seismic Class Break	Lat. Stop at 15A Lat. Stop at 30 Lat. Stop at 40	Q1-RBCW-02B Rev.0
Quad Cities Unit 1	RHRS	02B	Seismic/Non-Seismic Class Break	Guide at 6 Guide at 150	Q1-RHRS-02B Rev.0
Quad Cities Unit 1	RHRS	03B	Seismic/Non-Seismic Class Break	Z-Stop at 4A	Q1-RHRS-03B Rev.0



- Notes:
- 1) All piping is insulated
 - 2) All piping is sch. 40
 - 3) Design temp = 160°F

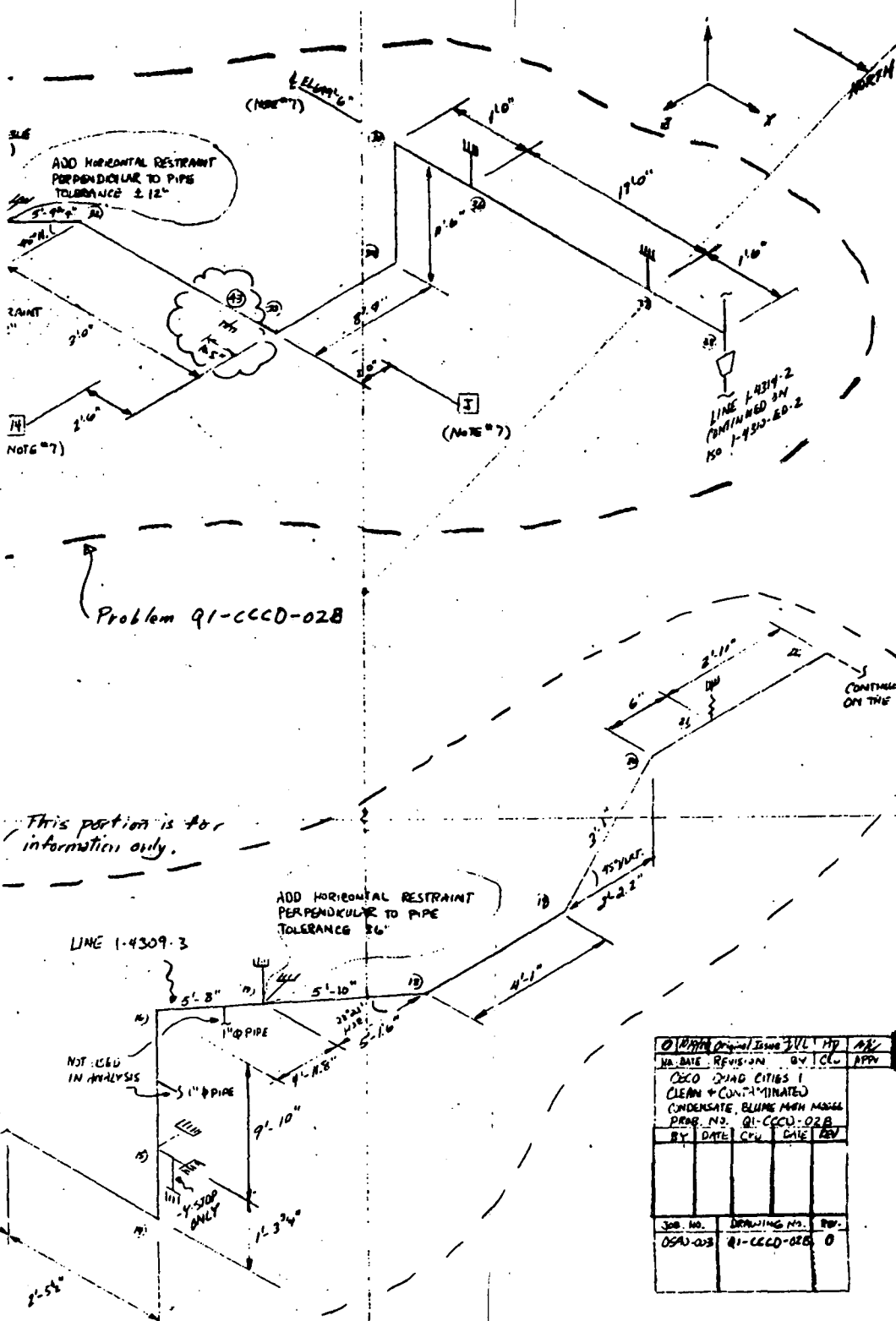
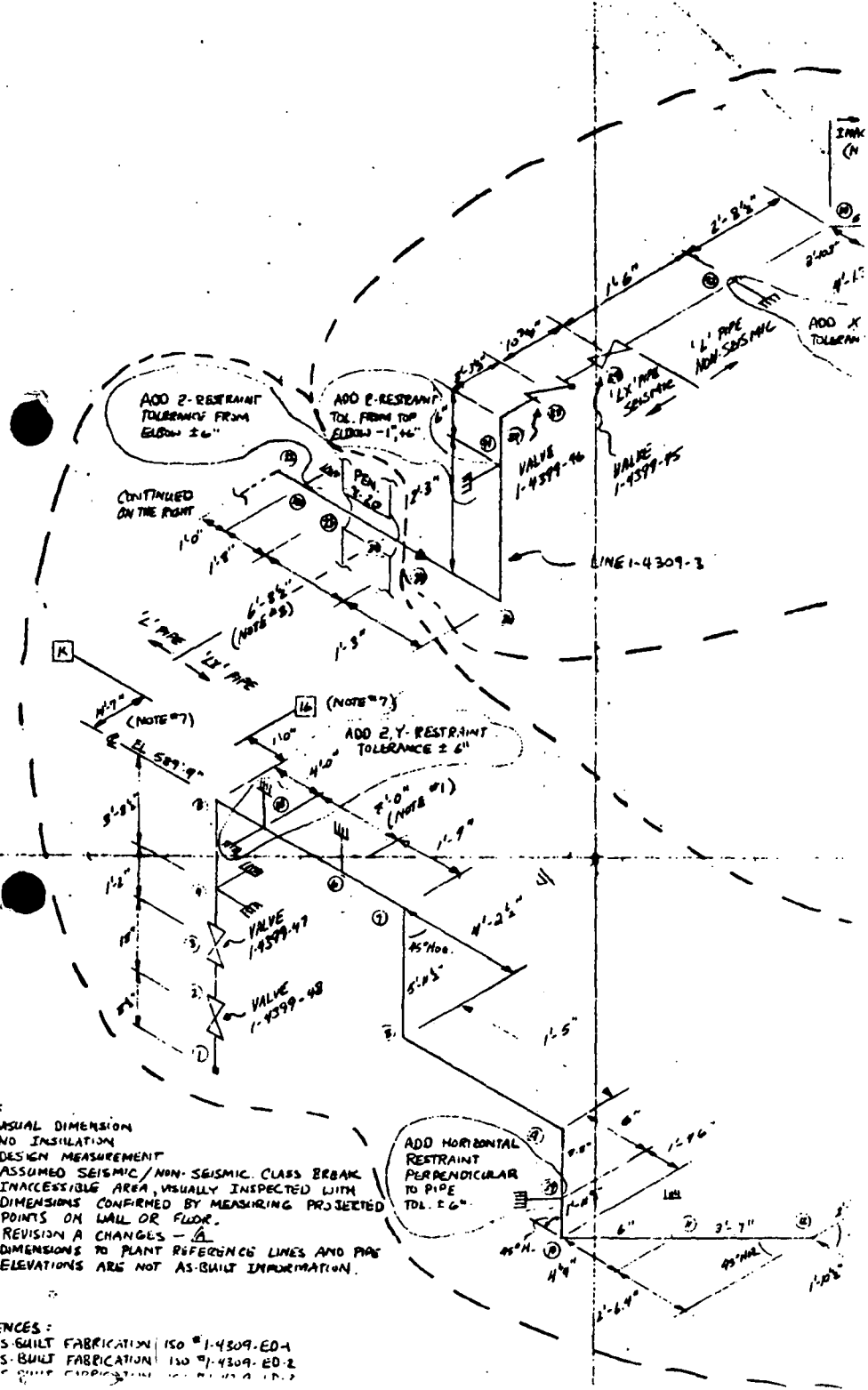
BLUME SPANS*	
Rigid	< 26'
Flexible	> 44'
Rigid w/ conc. wts.	< 13'

* for 8" sch. 40 piping

NO.	DATE	REVISIONS	BY	CHKD	APPV
1	11/3/80	PIPE RELOCATION	DKL	MYR	CKD

Q1- RBCW-01B rev 0
 BY: FBA 1/3/80
 CKD: DLU 10/4/80
 APPV: [Signature] 12/6/80

Required Supports indicated by

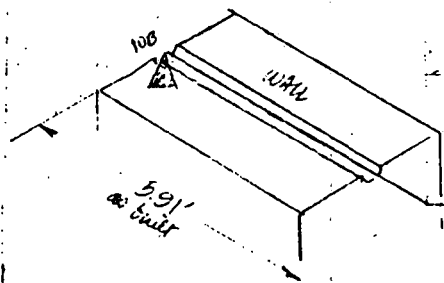


NOTES:

1. USUAL DIMENSION
2. NO INSULATION
3. DESIGN MEASUREMENT
4. ASSUMED SEISMIC / NON-SEISMIC CLASS BREAK
5. INACCESSIBLE AREA, USUALLY INSPECTED WITH DIMENSIONS CONFIRMED BY MEASURING PROJECTED POINTS ON WALL OR FLOOR.
6. REVISION A CHANGES - A
7. DIMENSIONS TO PLANT REFERENCE LINES AND PIPE ELEVATIONS ARE NOT AS-BUILT INFORMATION.

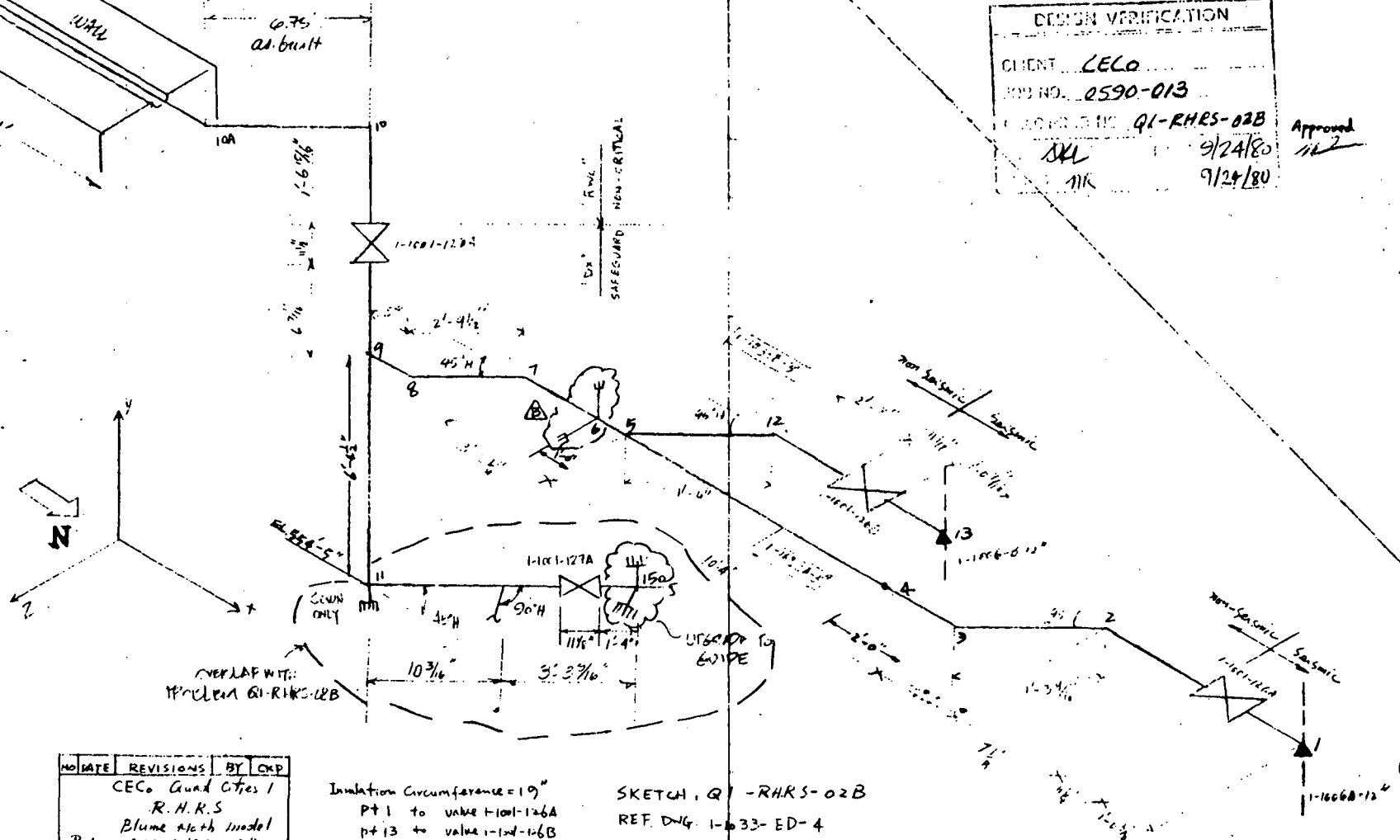
- REFERENCES:
1. AS-BUILT FABRICATION ISO #1-4309-ED-1
 2. AS-BUILT FABRICATION ISO #1-4309-ED-2
 3. AS-BUILT FABRICATION ISO #1-4309-ED-3

Original Issue JUL 87		HP	AS
DATE	REVISION	BY	CHK
			APP
CCCO DIAG CITIES 1 CLEAN & CONTAMINATED CONDENSATE, BLUME WITH MMSG PROG. NO. Q1-CCCD-02B BY DATE CHK DATE REV			
JOB NO.	DRAWING NO.	REV.	
0540-02B	Q1-CCCD-02B	0	



DESIGN VERIFICATION	
CLIENT	CECO
JOB NO.	0590-013
DRAWING NO.	Q1-RHRS-02B
BY	SKL
CHK	MR
DATE	9/24/80
DATE	9/24/80

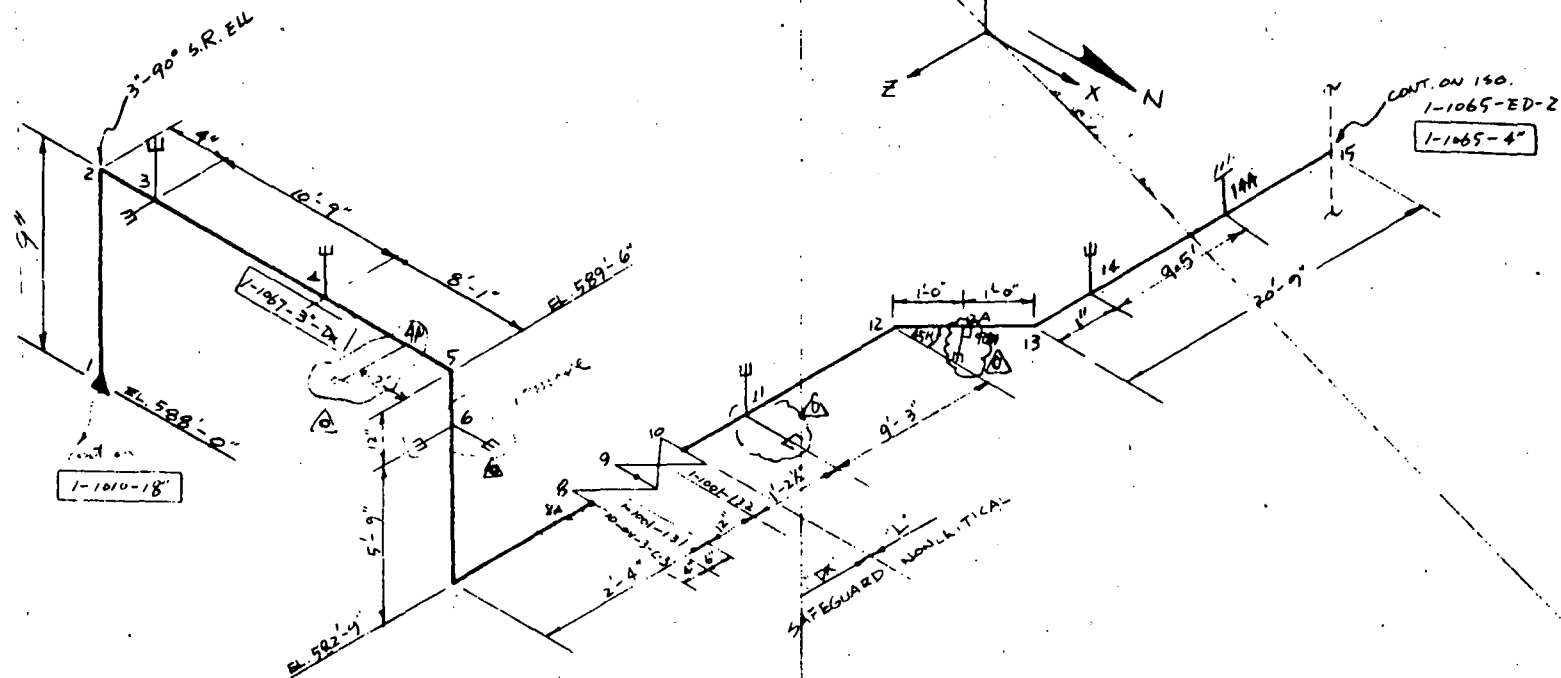
Approved
/s/



NO	DATE	REVISIONS	BY	CRP
		CECO Quad Cities 1		
		R.H.R.S		
		Blume North Model		
		Prob. 20. Q1-RHRS-02B		
		JOB NO.	DRAWING NO.	REV
		0590-013	Q1-RHRS-02B	0

Insulation Circumference = 19"
 pt 1 to value 1-1001-126A
 pt 13 to value 1-104-126B

SKETCH, Q1-RHRS-02B
 REF. DWG. 1-1033-ED-4
 1-1033-ED-3
 1-1054-ED-1
 REF. INSPECTION PACKAGE:
 Q1-RHRS-1.0



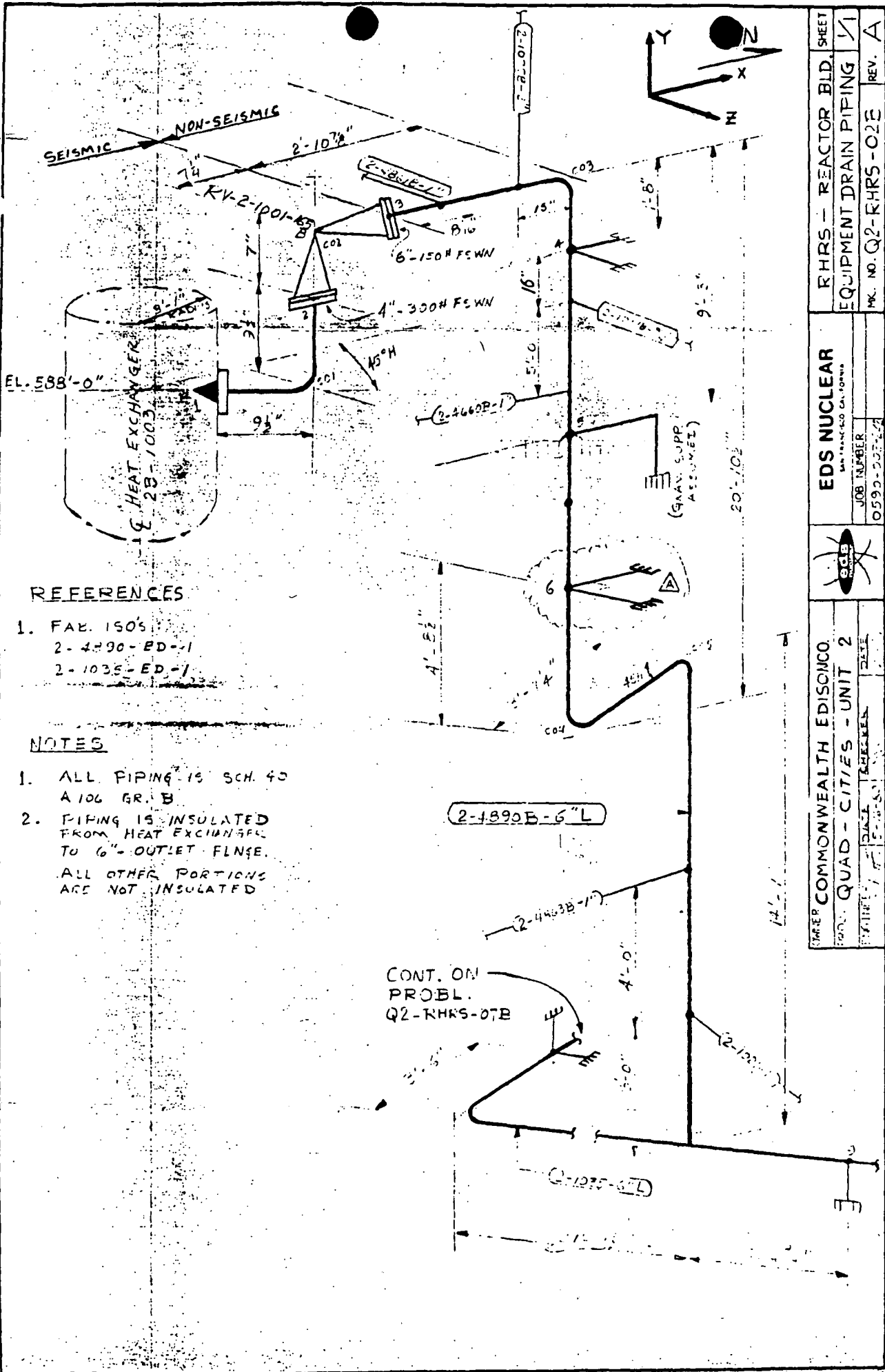
NO.	DATE	REVISIONS	BY	C.D.
		CEC. Grad Citest		
		R.H.S.		
		Flume Arch M.L.L.		
Job no. GA1-KRS-03B				
JOB NO.	DRAWING NO.	REV.		
0590-003	GA1-KRS-03B	0		

SKETCH: GA1-KRS-03B

REF. DWG 1-1067-ED-1
1-1010-ED-1
1-1065-ED-2

REF. CONNECTION PACKAGE
GA1-RHS-0

CEC
0590-003
Q1-RHS-03B
VH 2/1/80
gafi 2/2/80



REFERENCES

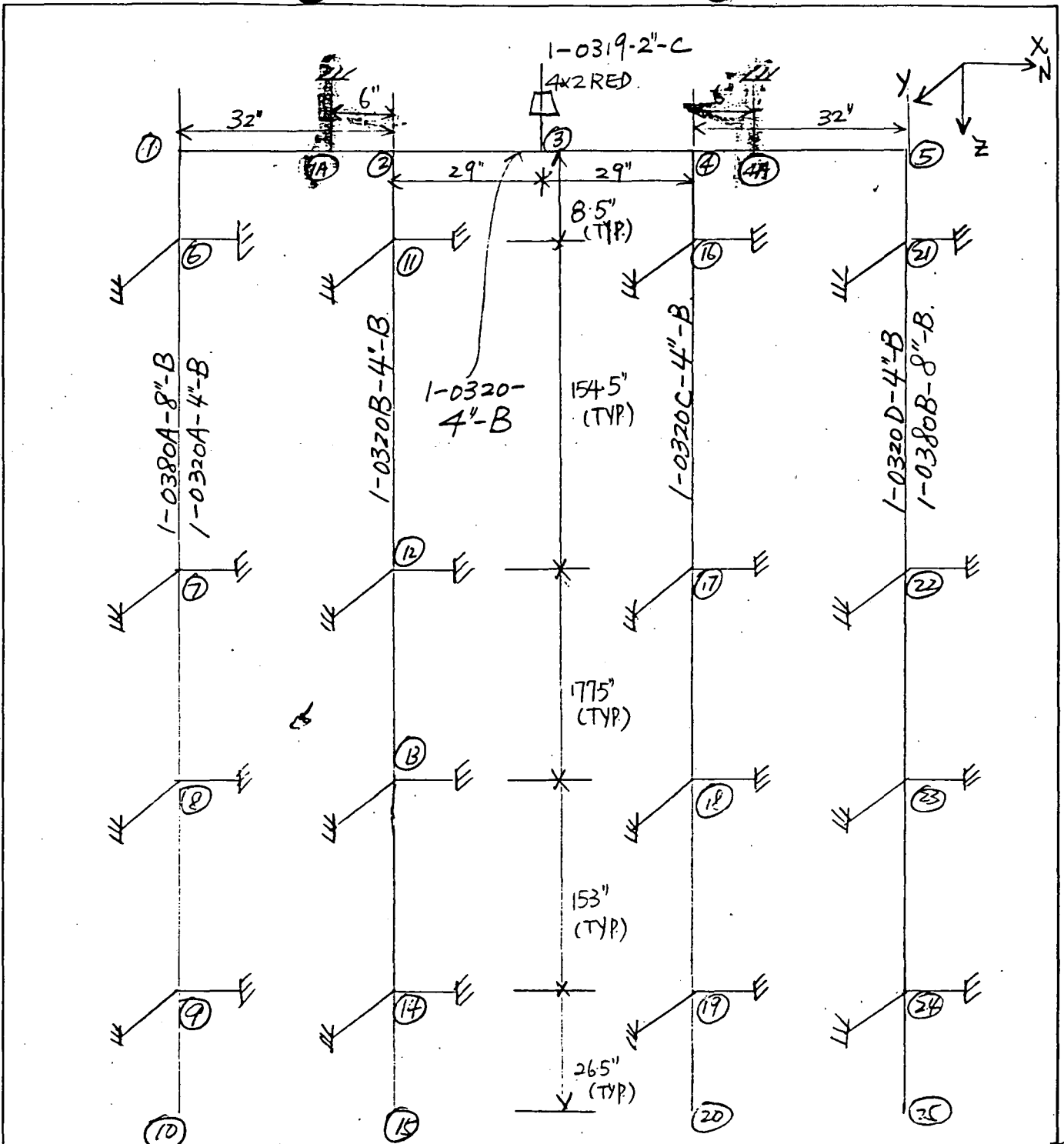
1. FAE 1505
2. 4290-ED-1
2. 1035-ED-1

NOTES

1. ALL PIPING IS SCH. 40
A 106 GR. B
2. PIPING IS INSULATED
FROM HEAT EXCHANGER
TO 6" OUTLET FLANGE.
ALL OTHER PORTIONS
ARE NOT INSULATED

CONT. ON
PROBL.
Q2-RHRS-07B

COMMONWEALTH EDISON CO		EDS NUCLEAR		RHRs - REACTOR BLD.	
QUAD - CITIES - UNIT 2		SAN FRANCISCO CALIFORNIA		EQUIPMENT DRAIN PIPING	
DATE	DATE	JOB NUMBER	0590-025-2	MC. NO. Q2-RHRS-02E	REV. A
1/15/51	1/15/51				

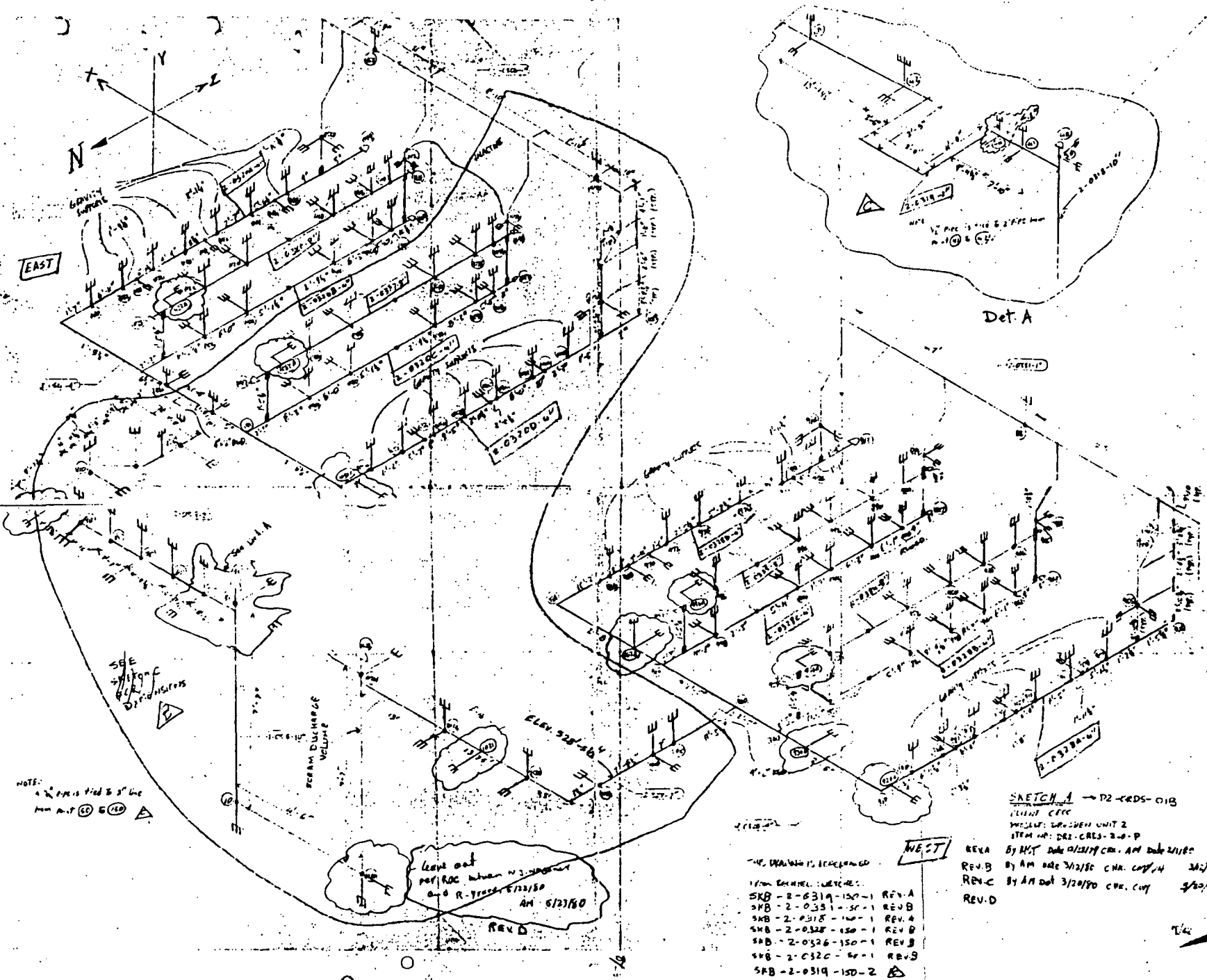


SCRAM HEADERS (SOUTH SIDE)

N.B. Nodes ⑦, ⑧, ⑨, ⑳, ㉓, ㉔ refer to both 4" and 8" pipings.

SKETCH A.1 (PLAN VIEW) REV A.

ITEM				CLIENT			
DAI-ED-13 CRDS-10				CECO			
SCRAM HEADERS PIPING				PROJECT			
SOUTH SIDE				Squad #1			
				JOB NO.			
				0590-003			
BY	DATE	CKD.	DATE	ITEM NO.	SHT.	OF	
RF	2/29/80	CWY	2/27/80	01-CRDS-01 B	8	53	

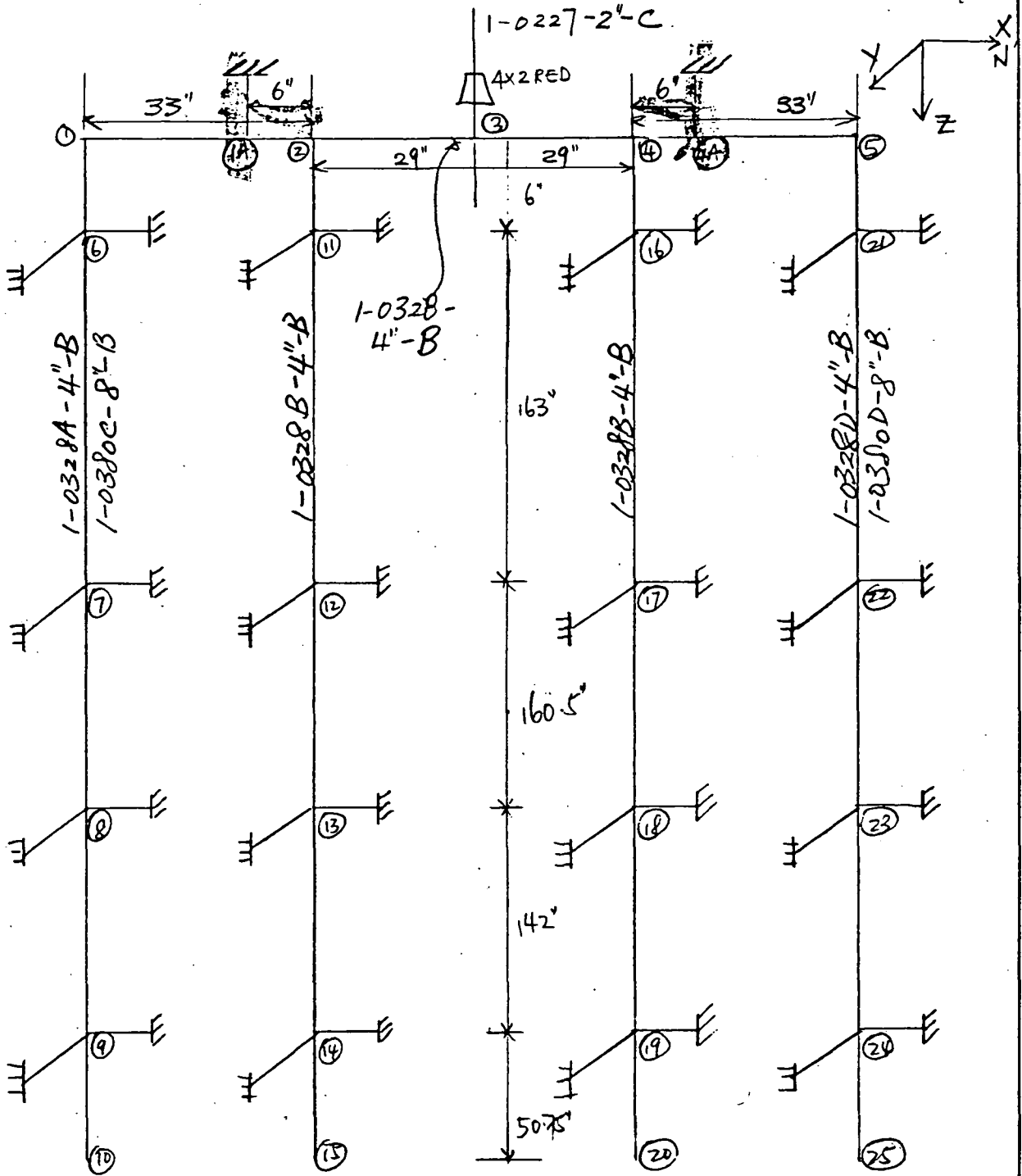


NOTE:
 a 2" pipe tied to 2" line
 mm a.p. (C) (E) (A)

leave out
 per RAC when N.S. changed
 a 2" R-1000 6/11/50
 AM 5/27/50
 REV D

SKETCH A → D2-CRDS-01B
 ILLUM. CIRC
 PROJECT: DRAGONHORN UNIT 2
 ITEM NO: DR2-CRDS-240-P
 REV A By AM dot 01/21/79 CHN. CUY/14
 REV B By AM dot 3/27/80 CHN. CUY/14 30270
 REV C By AM dot 3/27/80 CHN. CUY 3/30/80
 REV D

THE DRAWING IS RECORDED
 FROM CONTROL NUMBER:
 SKB-2-0319-150-1 REV A
 SKB-2-0331-150-1 REV B
 SKB-2-0318-150-1 REV A
 SKB-2-0328-150-1 REV B
 SKB-2-0326-150-1 REV B
 SKB-2-0320-150-1 REV B
 SKB-2-0319-150-2



SCRAM HEADERS (NORTH SIDE)

SKETCH A2 (PLAN VIEW) REV A

N.B. Nodes ⑦, ⑧, ⑨, ⑲, ⑳, ㉑ refer to both 4" and 8" pipelegs

ITEM		QAI-ED-13 CRDS-1.0		CLIENT		CECO	
		SCRAM HEADERS PIPING		PROJECT		Quad #1	
		NORTH SIDE		JOB NO.		0590-003	
BY	DATE	CKD.	DATE	ITEM NO.	SHT.		OF
RCF	2/29/80	CWY for	2/29/80	01-CRDS-D1B.	13		53