



Commonwealth Edison
 One First National Plaza, Chicago, Illinois
 Address Reply to: Post Office Box 767
 Chicago, Illinois 60690

Central File

October 29, 1980

US NRC
 DISTRIBUTION SERVICES
 BRANCH

1980 NOV 7 PM 12 19

RECEIVED DISTRIBUTION
 SERVICES UNIT

Mr. James G. Keppler, Director
 Directorate of Inspection and
 Enforcement - Region III
 U.S. Nuclear Regulatory Commission
 799 Roosevelt Road
 Glen Ellyn, IL 60137

Subject: Dresden Station Units 2 and 3
 Quad Cities Station Units 1 and 2
 Monthly Status Report of IE
 Bulletin 79-14 Evaluations
 NRC Docket Nos. 50-237/249 and
50-254/265

Reference (a): R. F. Janecek letter to J. G. Keppler
 dated October 21, 1980.

Dear Mr. Keppler:

Due to an inadvertent omission, four drawings were not included in the October status report provided by Reference (a).

The drawings, which are enclosed for your use, are isometric drawings for the Dresden 2 CRD system, Quad Cities 2 RHR system, and Quad Cities 1 CRD system.

Please address any questions concerning this matter to this office.

Very truly yours,

Robert F. Janecek

Robert F. Janecek
 Nuclear Licensing Administrator
 Boiling Water Reactors

Enclosures

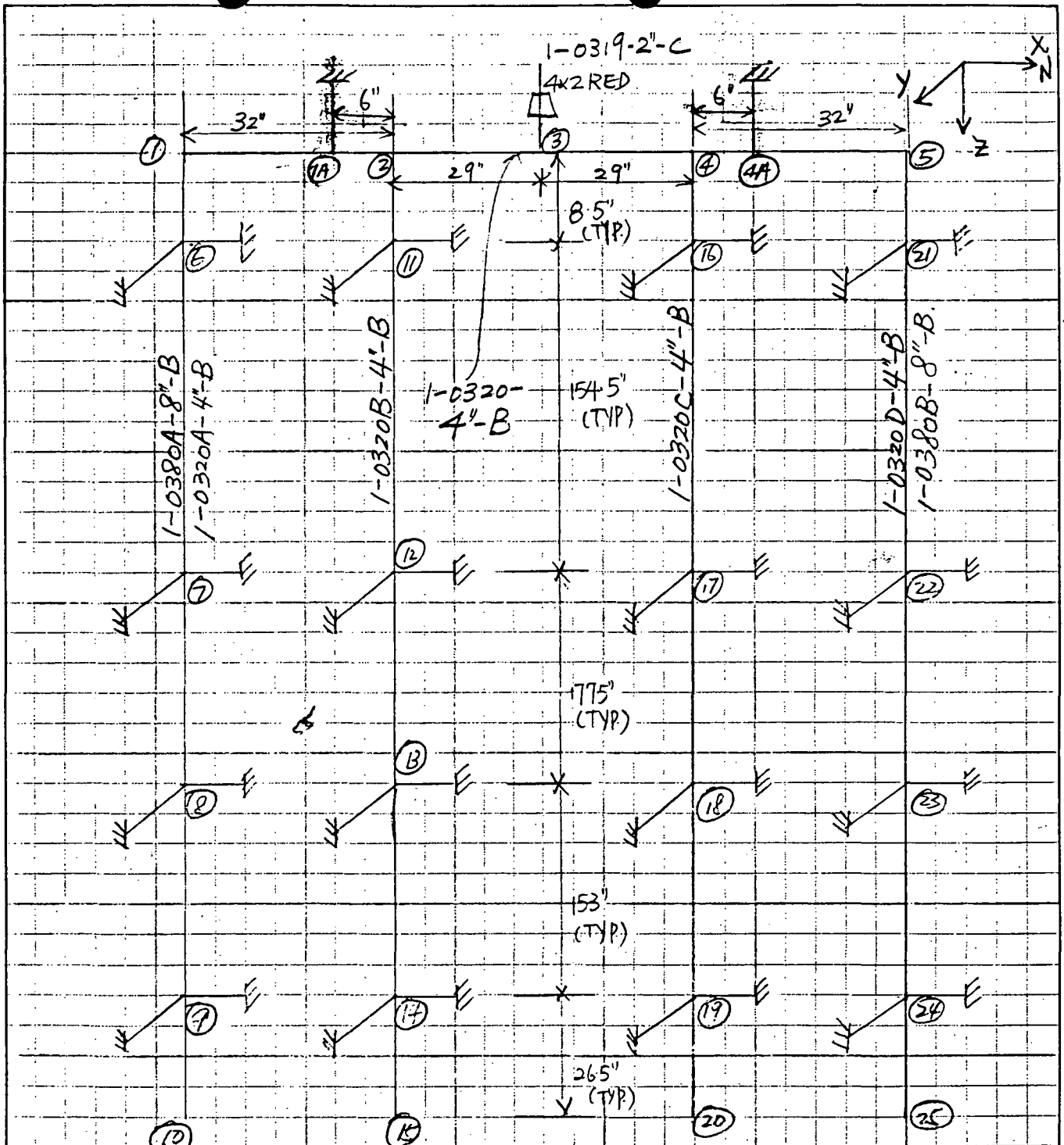
cc: Director, Division of Reactor
 Operations Inspection - w/o att.
 RIII Inspector, Dresden - w/o att.
 RIII Inspection, Quad Cities - w/o att.

8011170249

OCT 31 1980

7764A

Q

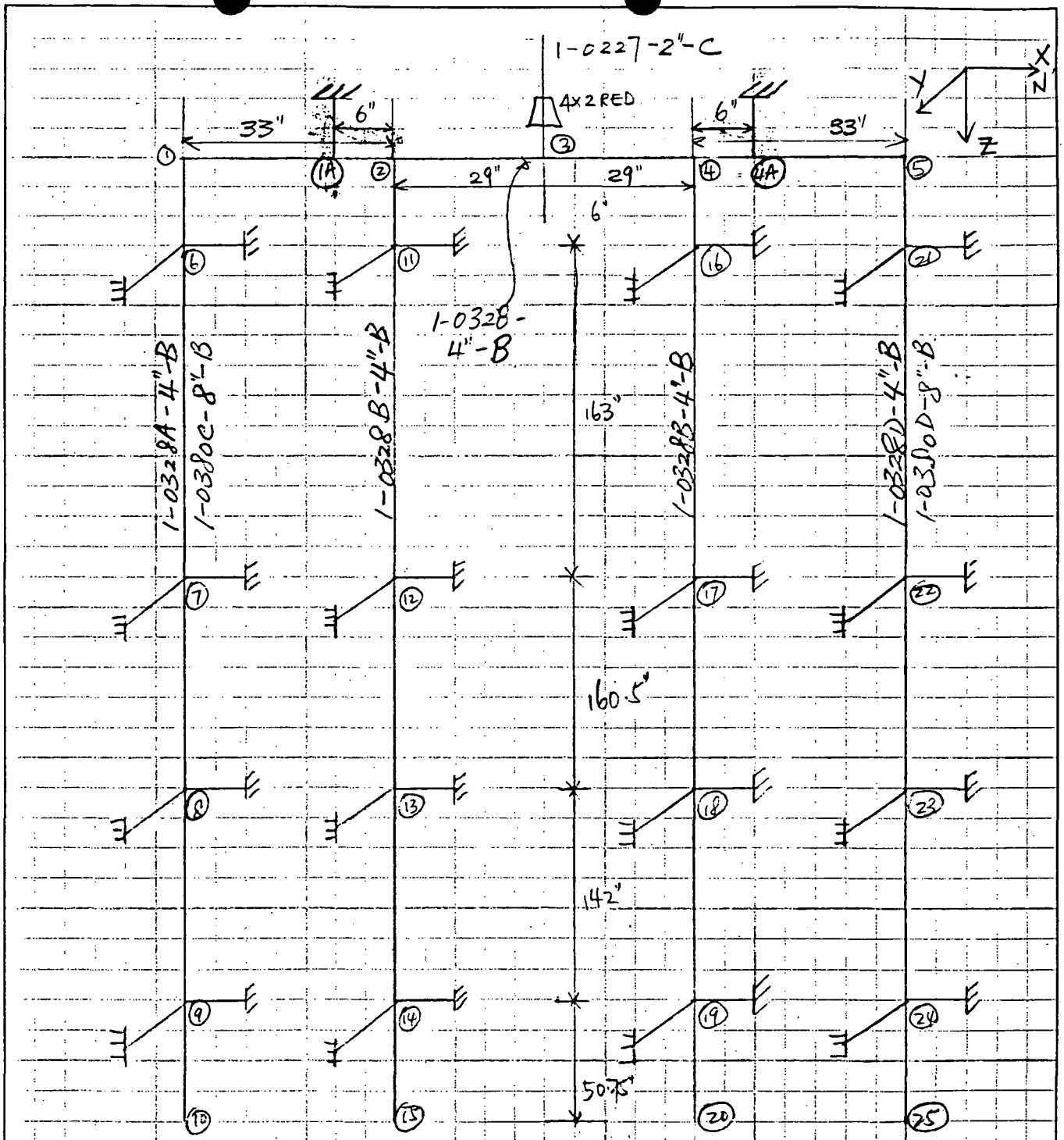


SCRAM HEADERS (SOUTH SIDE)

N.B. Nodes 7, 8, 9, 23, 23, 24 refers to both 4" and 8" pipings

SKETCH A.1 (PLAN VIEW) REV A

ITEM DAH-ED-13 CRDS-10 SCRAM HEADERS PIPING SOUTH SIDE		CLIENT CECO PROJECT Quad #1	
BY RCF		JOB NO. 0590-003	
DATE 2/29/80	CKD. CWY for FCWA	DATE 2/29/80	ITEM NO. 81-ORDS-01 B
		SHT. 8 OF 53	

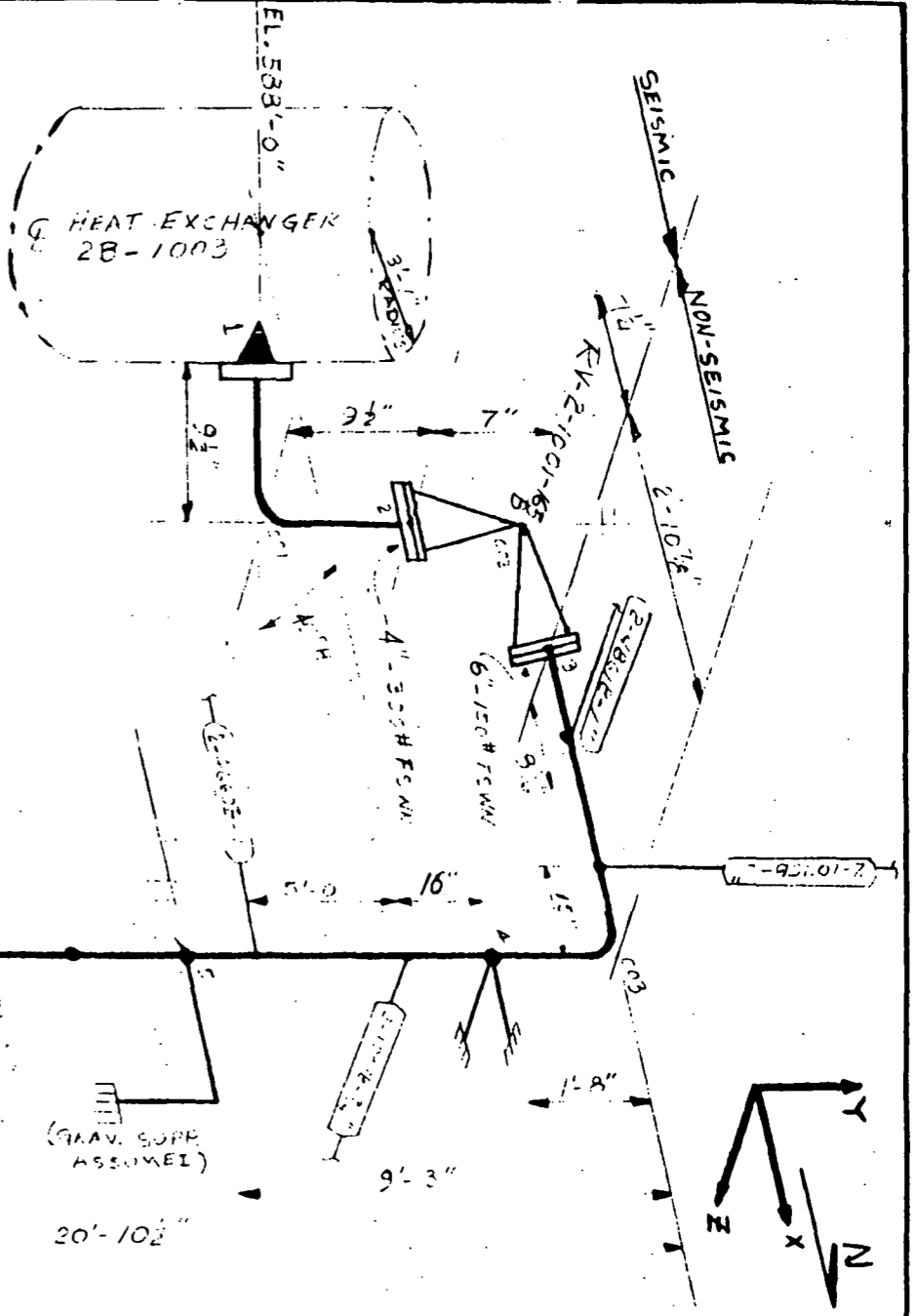


SCRAM HEADERS (NORTH SIDE)

SKETCH A2 (PLAN VIEW) REV A

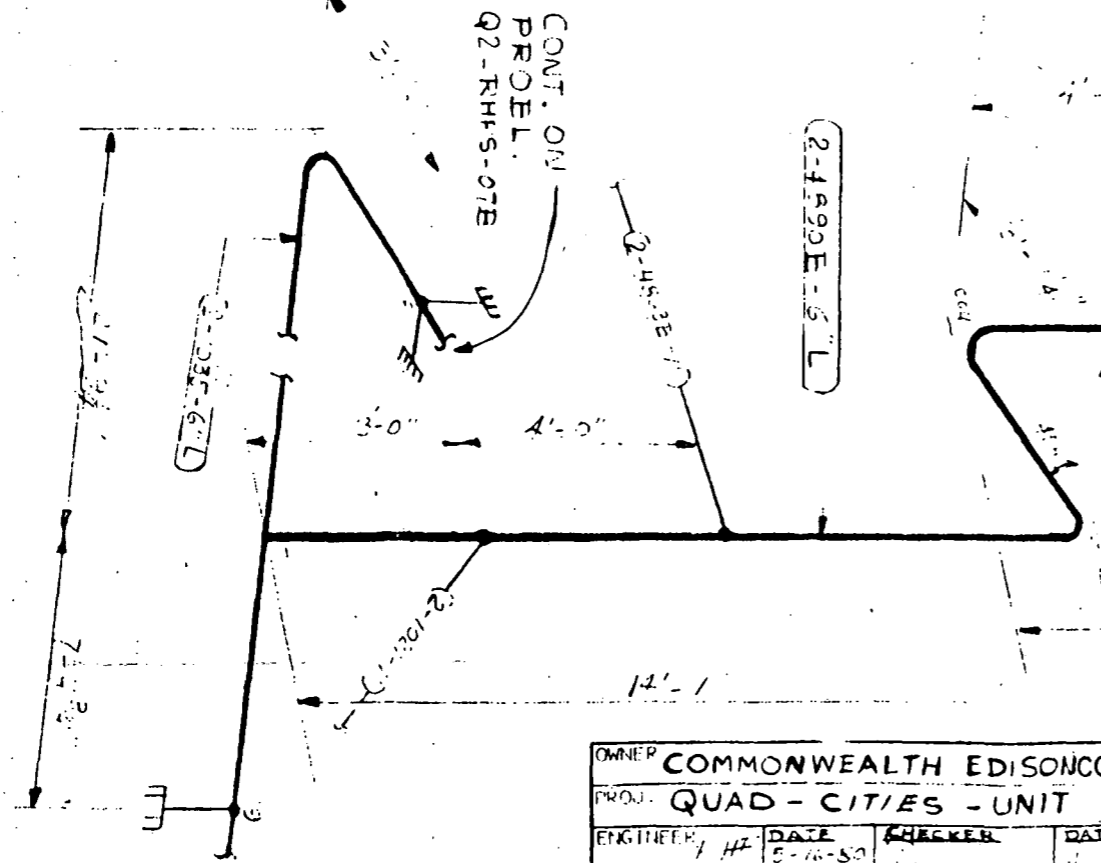
NB. Nodes ⑦, ⑧, ⑨, ⑲, ⑳, ㉔ refer to both 4" and 8" pipings


ITEM QAI-ED-13 CRDS-1.0				CLIENT CEG	
SCRAM HEADERS PIPING				PROJECT Quad #1	
NORTH SIDE				JOB NO. 0590-003	
BY RCF	DATE 2/29/80	CKD. CWY	DATE 2/29/80	ITEM NO. QI-CRDS-DIB	SHT. 13 OF 53

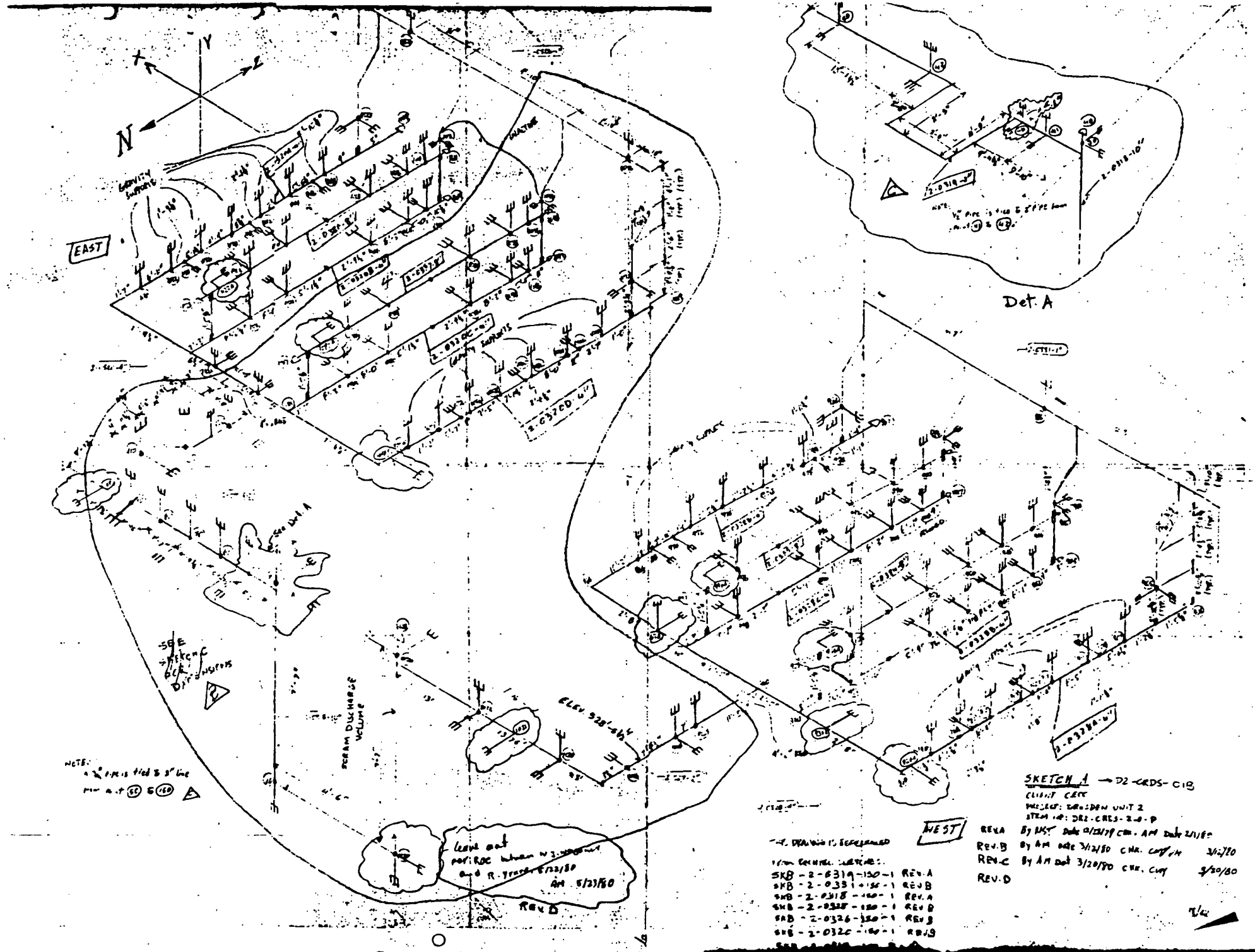


- REFERENCES**
1. FAB. 1501:
 2. 4590-ED-1
 2. 1030-ED-1

- NOTES**
1. ALL PIPING 1/2 SCH 40 A 100 GR. B
 2. PIPING IS INSULATED FROM HEAT EXCHANGER TO 6" OUTLET FLANGE. ALL OTHER PORTIONS ARE NOT INSULATED.



OWNER COMMONWEALTH EDISON CO.			EDS NUCLEAR SAN FRANCISCO CALIFORNIA		RHRS - REACTOR BLD.		SHELI
PROJ. QUAD - CITIES - UNIT 2			JOB NUMBER 0530-025-24		EQUIPMENT DRAIN PIPING		1/1
ENGINEER / #	DATE 5-16-50	CHECKER	DATE	MK. NO. Q2-RHRS-02B		REV. A	



NOTE:
 1. 1/2" = 10' 3" line
 2. 1/4" = 10' 3" line
 3. 1/8" = 10' 3" line

Leave out
 per ROC when N.S. 1/2/80
 and R. 1/2/80
 AM 5/27/80
 Rev D

THE DRAWING IS REPRESENTED
 BY THE FOLLOWING LISTINGS:
 SKB-2-631A-150-1 REV A
 SKB-2-0331-150-1 REV B
 SKB-2-0318-150-1 REV A
 SKB-2-0328-150-1 REV B
 SKB-2-0326-150-1 REV B
 SKB-2-0320-150-1 REV B

WEST

REVA By AM dat 9/21/79 CHA. CUY IN 3/2/80
 REV B By AM dat 3/2/80 CHA. CUY IN 3/2/80
 REV C By AM dat 3/2/80 CHA. CUY 3/2/80
 REV D

SKETCH 1 → 72-CRDS-C18
 CLINT CAMP
 MESS: GRANDBY UNIT 2
 STEAK: DR2-CRDS-24-P

Det A