

ACCELERATED DISTRIBUTION DEMONSTRATION SYSTEM

REGULATORY INFORMATION DISTRIBUTION SYSTEM (RIDS)

ACCESSION NBR: 9401070141 DOC. DATE: 93/12/01 NOTARIZED: NO DOCKET #
 FACIL: 50-387 Susquehanna Steam Electric Station, Unit 1, Pennsylv 05000387
 50-388 Susquehanna Steam Electric Station, Unit 2, Pennsylv 05000388
 AUTH. NAME AUTHOR AFFILIATION
 BYRAM, R.G. Pennsylvania Power & Light Co.
 RECIPIENT AFFILIATION
 MILLER, C.L. Project Directorate I-2

Revised 1/28/94 JH

SUBJECT: Forwards "Rev 19 to SSES Emergency Plan."

DISTRIBUTION CODE: A045D COPIES RECEIVED: LTR 1 ENCL 1 SIZE: 2+16
 TITLE: OR Submittal: Emergency Preparedness Plans, Implement'g Procedures, C

NOTES:

	RECIPIENT ID CODE/NAME	COPIES LTTR ENCL	RECIPIENT ID CODE/NAME	COPIES LTTR ENCL
	PD1-2 PD	1 1	CLARK, R	1 1
INTERNAL:	AEOD/DOA/IRB	1 1	NRR/DRSS/PEPB	1 1
	NUDOCS-ABSTRACT	1 1	<u>REG-FILE</u> 01	1 1
EXTERNAL:	NRC PDR	1 1	NSIC	1 1

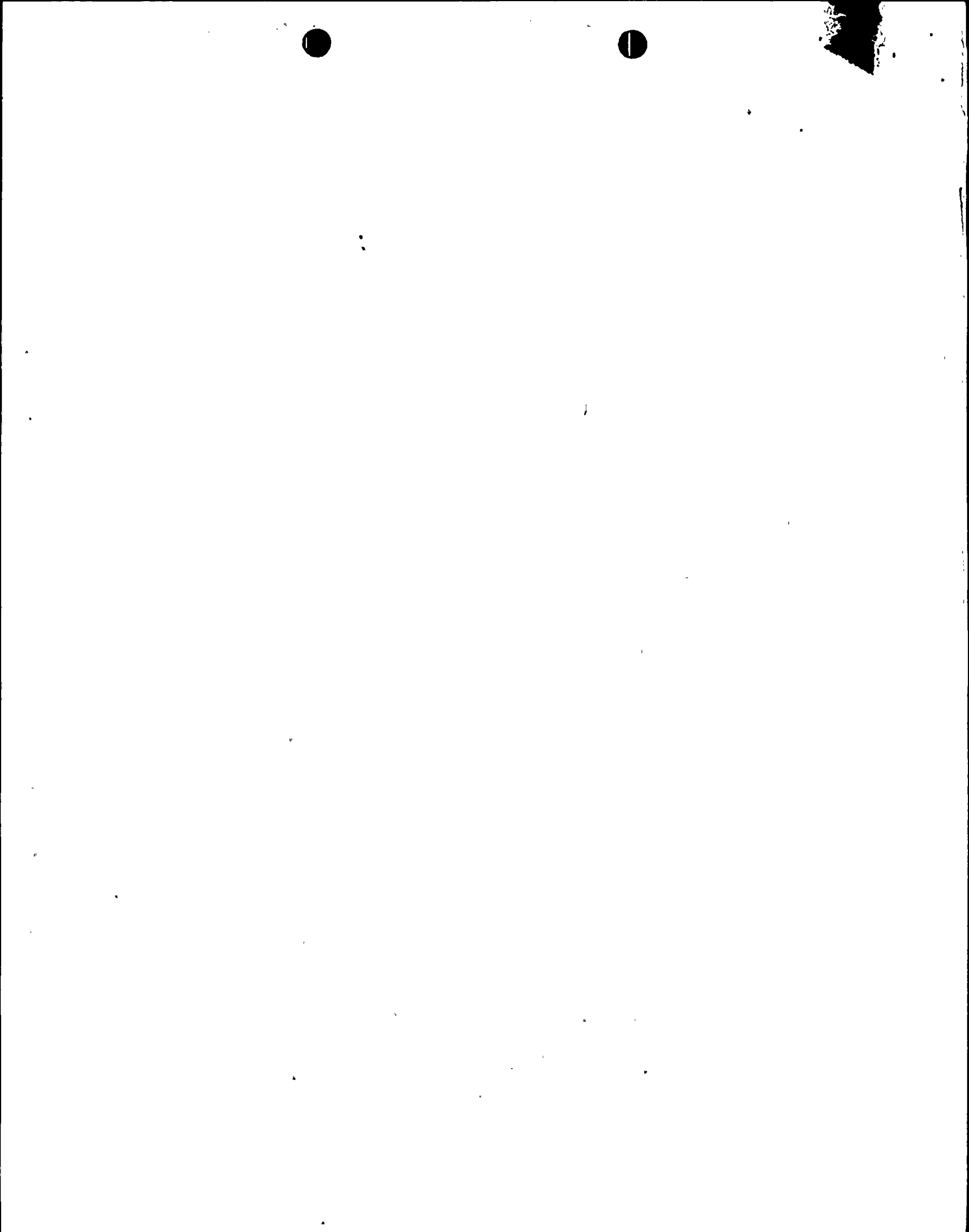
NOTE TO ALL "RIDS" RECIPIENTS:

PLEASE HELP US TO REDUCE WASTE! CONTACT THE DOCUMENT CONTROL DESK, ROOM P1-37 (EXT. 20079) TO ELIMINATE YOUR NAME FROM DISTRIBUTION LISTS FOR DOCUMENTS YOU DON'T NEED!

TOTAL NUMBER OF COPIES REQUIRED: LTR 8 ENCL 8

MAF

R
I
D
S
/
A
D
D
S
/
A
D
D
S
/
A
D
D
S





Pennsylvania Power & Light Company

Two North Ninth Street • Allentown, PA 18101-1179 • 215/774-5151

December 1, 1993

Robert G. Byram
Senior Vice President-Nuclear
(215) 774-7502

Director of Nuclear Reactor Regulation
Attention: Mr. C.L. Miller, Project Director
Project Directorate I-2
Division of Reactor Projects
U.S. Nuclear Regulatory Commission
Washington, DC 20555

SUSQUEHANNA STEAM ELECTRIC STATION
EMERGENCY PLAN REVISION NO. 19
PLA-4054 FILES R36, A17-13

Docket Nos. 50-387
and 50-388


Dear Mr. Miller:

Enclosed is Revision 19 to the Susquehanna Steam Electric Station Emergency Plan. In accordance with the requirements of 10CFR50.54q, the changes have been made without prior formal commission approval as they do not decrease the effectiveness of the plan; and the plan as changed, continues to satisfy the applicable requirements of Appendix E to 10CFR50.

Revision 19 incorporates the changing of the location of the Media Operations Center from the Berwick YMCA to the PP&L Northeast Division Headquarters, located in Wilkes-Barre, Pennsylvania.

Should you have any questions regarding this submittal, call Mr. R.M. Peal at (717) 542-3233.

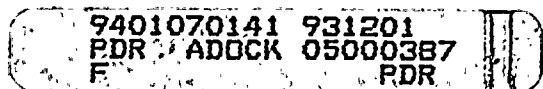
Very truly yours,



R.G. Byram

Enclosure

cc: NRC Document Control Desk (original)
NRC Region I
Mr. G.S. Barber, NRC Sr. Resident Inspector - SSES
Mr. R.J. Clark, NRC Sr. Project Manager - Rockville
Mr. T.T. Martin, Administrator, Region I



A045

SUSQUEHANNA STEAM ELECTRIC STATION

EMERGENCY PLAN, REVISION 19

REMOVE AND INSERT INSTRUCTIONS

REMOVE

INSERT

Cover Page, PORC Mtg. #93-035

Cover Page, PORC Mtg. #93-133

Title Page, Revision 18

Title Page, Revision 19

List of Effective Pages,
pages LEP-1 to LEP-8, Rev. 18

List of Effective Pages,
pages LEP-1 to LEP-8, Rev. 19

Section 8.0, Emergency Facilities and
Equipment
pages 8-6 and 8-7, Rev. 18

Section 8.0, Emergency Facilities and
Equipment
pages 8-6 and 8-7, Rev. 19

Figure 6-4, Rev. 15

Figure 6-4, Rev. 19



MANUAL : EP
FILE R-17
12/08/93 23:35:38
PAGE 1

NUCLEAR RECORDS CONTROLLED DOCUMENT TRANSMITTAL

TO: DOCUMENT CONTROL DESK

US NUCLEAR REGULATORY COMMISSION
WASHINGTON, DC 20555

FROM: NUCLEAR RECORDS DOCUMENT CONTROL CENTER - SSES

MANUAL: EP
PP&L SUSQUEHANNA STEAM ELECTRIC STATION UNITS 1 & 2
EMERGENCY PLAN MANUAL
OF COPIES: 1 MANUAL #: 1

PLEASE VERIFY/UPDATE THE CONTROLLED DOCUMENT(S) AS INDICATED BELOW:

REMOVE PROC: EMERGENCY PLAN REV: 18
ADD PROC: EMERGENCY PLAN REV: 19

PLEASE UPDAVE IN ACCORDANCE WITH THE REMOVE/INSERT
INSTRUCTIONS PROVIDED

PLEASE CHECK HERE IF ANY DOCUMENTS ARE MISSING AND INDICATE THE
MISSING DOCUMENTS ON THE REVERSE SIDE OF THIS FORM.

PLEASE SIGN AND DATE THIS TRANSMITTAL BELOW. IT SHOULD BE RETURNED TO SENDER
WITHIN TEN WORK DAYS TO ACKNOWLEDGE RECEIPT.

THE ADDRESSEE HEREBY ATTESTS THAT THE DOCUMENT(S) RECEIVED AGREE WITH THE
ABOVE LISTING, THAT ALL REMOVED/REPLACED DOCUMENTS HAVE BEEN DESTROYED/VOIDED,
THAT THE DOCUMENTS HAVE BEEN INCORPORATED INTO THE PROPER FILES, AND THAT THE
APPROPRIATE PERSONNEL HAVE BEEN MADE AWARE OF THE CHANGES.

RECEIVED BY

DATE

**PENNSYLVANIA POWER & LIGHT COMPANY
SUSQUEHANNA STEAM ELECTRIC STATION**

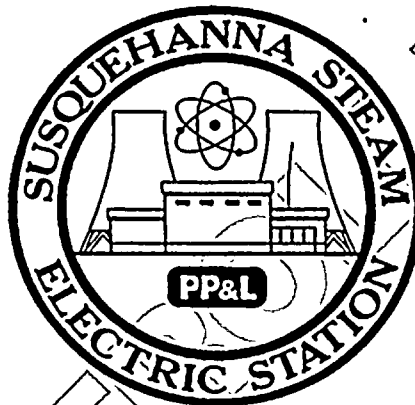
EMERGENCY PLAN

REVISION 18

MAY 1993

PORC MEETING #93-035

PENNSYLVANIA POWER & LIGHT COMPANY
SUSQUEHANNA STEAM ELECTRIC STATION



CONFIDENTIAL

EMERGENCY PLAN

**THIS DOCUMENT HAS BEEN UPDATED TO
INCLUDE REVISIONS THROUGH 18 DATED
5/93.**

**SUSQUEHANNA STEAM ELECTRIC STATION
EMERGENCY PLAN**

LIST OF EFFECTIVE PAGES

This list of effective pages is provided for the convenience of the end users of the Susquehanna SES Emergency Plan. It is reprinted in its entirety and distributed with each revision.

PAGE	REVISION	DATED
Title	18	05/93
Table of Contents i	18	05/93
ii	18	05/93
iii	18	05/93
SECTION 1.0 - DEFINITIONS		
1-1	18	05/93
1-2	18	05/93
1-3	18	05/93
1-4	18	05/93
1-5	18	05/93
SECTION 2.0 - ACRONYMS		
2-1	18	05/93
2-2	18	05/93
SECTION 3.0 - REFERENCES		
3-1	17	03/93
SECTION 4.0 - SCOPE AND CONTENTS		
4-1	15	01/92
4-2	15	01/92
Figure 4.1	11	10/88
Figure 4.2	11	10/88
SECTION 5.0 - EMERGENCY CONDITIONS		
5-1	18	05/93
5-2	18	05/93
5-3	18	05/93
5-4	18	05/93
5-5	18	05/93
5-6	18	05/93
5-7	18	05/93
Table 5.1, page 1	18	05/93
Table 5.1, page 2	18	05/93
Table 5.1, page 3	18	05/93
Table 5.1, page 4	18	05/93
Table 5.1, page 5	18	05/93
Table 5.1, page 6	18	05/93
Table 5.1, page 7	18	05/93
Table 5.1, page 8	18	05/93

PAGE	REVISION	DATED
Table 5.1, page 9	18	05/93
Table 5.1, page 10	18	05/93
Table 5.1, page 11	18	05/93
Table 5.1, page 12	18	05/93
Table 5.1, page 13	18	05/93
Table 5.1, page 14	18	05/93
Table 5.1, page 15	18	05/93
Table 5.1, page 16	18	05/93
Table 5.1, page 17	18	05/93
Table 5.1, page 18	18	05/93
Table 5.1, page 19	18	05/93
Table 5.1, page 20	18	05/93
Table 5.1, page 21	18	05/93
Table 5.1, page 22	18	05/93
Table 5.1, page 23	18	05/93
Table 5.1, page 24	18	05/93
Table 5.1, page 25	18	05/93
Table 5.1, page 26	18	05/93
Table 5.1, page 27	18	05/93
Table 5.1, page 28	18	05/93
Table 5.1, page 29	18	05/93
Table 5.1, page 30	18	05/93
Table 5.1, page 31	18	05/93
Table 5.1, page 32	18	05/93
Table 5.1, page 33	18	05/93
Table 5.1, page 34	18	05/93
Table 5.2, page 1	18	05/93
Table 5.2, page 2	18	05/93
Table 5.2, page 3	18	05/93
Table 5.2, page 4	18	05/93
Table 5.2, page 5	18	05/93
Table 5.2, page 6	18	05/93
Table 5.2, page 7	18	05/93
SECTION 6.0 - ORGANIZATIONAL CONTROL OF EMERGENCIES		
6-1	18	05/93
6-2	18	05/93
6-3	18	05/93
6-4	18	05/93
6-5	18	05/93
6-6	18	05/93
6-7	18	05/93
6-8	18	05/93
6-9	18	05/93
6-10	18	05/93
6-11	18	05/93

PAGE	REVISION	DATED
6-12	18	05/93
6-13	18	05/93
6-14	18	05/93
6-15	18	05/93
6-16	18	05/93
6-17	18	05/93
6-18	18	05/93
6-19	18	05/93
6-20	18	05/93
Table 6.1, page 1	18	05/93
Table 6.1, page 2	18	05/93
Table 6.2, page 1	18	05/93
Table 6.2, page 2	18	05/93
Table 6.2, page 3	18	05/93
Table 6.3, page 1	15	01/92
Figure 6.1	18	05/93
Figure 6.2a	18	05/93
Figure 6.2b	16	01/93
Figure 6.3	15	01/92
Figure 6.4	15	01/92
Figure 6.5	15	01/92
Figure 6.6	11	10/88
Figure 6.7	15	01/92
SECTION 7.0 - EMERGENCY MEASURES		
7-1	18	05/93
7-2	18	05/93
7-3	18	05/93
7-4	18	05/93
7-5	18	05/93
7-6	18	05/93
7-7	18	05/93
7-8	18	05/93
Table 7.1, page 1	18	05/93
Table 7.1, page 2	18	05/93
Table 7.2, page 1	18	05/93
Table 7.3, page 1	18	05/93
Table 7.3, page 2	18	05/93
Table 7.3, page 3	18	05/93
SECTION 8.0 - EMERGENCY FACILITIES AND EQUIPMENT		
8-1	18	05/93
8-2	18	05/93
8-3	18	05/93
8-4	18	05/93
8-5	18	05/93
8-6	18	05/93

PAGE	REVISION	DATED
8-7	18	05/93
8-8	18	05/93
8-9	18	05/93
8-10	18	05/93
8-11	18	05/93
8-12	18	05/93
8-13	18	05/93
8-14	18	05/93
8-15	18	05/93
8-16	18	05/93
8-17	18	05/93
8-18	18	05/93
8-19	18	05/93
8-20	18	05/93
Table 8.1, page 1	17	03/93
Figure 8.1	11	10/88
Figure 8.2	11	10/88
Figure 8.3	11	10/88
Figure 8.4	11	10/88
Figure 8.5	11	10/88
Figure 8.6	11	10/88
SECTION 9.0 - MAINTENANCE EMERGENCY PREPAREDNESS		
9-1	18	05/93
9-2	18	05/93
9-3	18	05/93
9-4	18	05/93
Table 9.1, page 1	18	05/93
Table 9.1, page 2	18	05/93
APPENDIX A - LETTERS OF AGREEMENT		
A-1	18	05/93
A-2	18	05/93
A-3	18	05/93
APPENDIX B - WIND ROSES AND DOSE/DISTANCE PLOTS		
B-1	15	01/92
B-2	15	01/92
B-3	15	01/92
Figure B.1	11	10/88
Figure B.2	11	10/88
Figure B.3	11	10/88
Figure B.4	11	10/88
Figure B.5	11	10/88
Figure B.6	11	10/88
Figure B.7	11	10/88

PAGE	REVISION	DATED
APPENDIX C - SSES EMERGENCY PLAN POSITION SPECIFIC PROCEDURES (TYPICAL)		
C-1	18	05/93
C-2	18	05/93
C-3	18	05/93
APPENDIX D - EQUIPMENT INFORMATION LISTINGS		
D-1	18	05/93
D-2	18	05/93
D-3	18	05/93
D-4	18	05/93
D-5	18	05/93
D-6	18	05/93
D-7	18	05/93
D-8	18	05/93
D-9	18	05/93
D-10	18	05/93
D-11	18	05/93
D-12	18	05/93
D-13	18	05/93
D-14	18	05/93
D-15	18	05/93
D-16	18	05/93
APPENDIX E - CORPORATE POLICY STATEMENT		
E-1	18	05/93
Corporate Policy Statement, (letter dated 05/10/93)	18	05/93
APPENDIX F - NUREG 0654 INITIATING CONDITIONS NOT INCLUDED ON TABLE 5.1		
F-1	18	05/93
F-2	18	05/93
F-3	18	05/93
APPENDIX G - SSES EVACUATION TIME ESTIMATES		
G-1	15	01/92
Evacuation Time Estimates, cover page (Report Dated 08/81)	11	10/88
Evacuation Time Estimates, title page (Report Dated 08/81)	11	10/88
TOC	11	10/88
1-1	11	10/88
1-2	11	10/88
1-3	11	10/88
1-4	11	10/88
1-5	11	10/88
1-6	11	10/88

PAGE	REVISION	DATED
2-1	11	10/88
2-2	11	10/88
2-3	11	10/88
2-4	11	10/88
2-5	11	10/88
2-6	11	10/88
2-7	11	10/88
2-8	11	10/88
2-9	11	10/88
2-10	11	10/88
2-11	11	10/88
2-12	11	10/88
2-13	11	10/88
2-14	11	10/88
2-15	11	10/88
2-16	11	10/88
3-1	11	10/88
3-2	11	10/88
3-3	11	10/88
3-4	11	10/88
3-5	11	10/88
3-6	11	10/88
3-7	11	10/88
3-8	11	10/88
3-9	11	10/88
3-10	11	10/88
3-11	11	10/88
3-12	11	10/88
3-13	11	10/88
3-14	11	10/88
3-15	11	10/88
4-1	11	10/88
4-2	11	10/88
4-3	11	10/88
4-4	11	10/88
4-5	11	10/88
4-6	11	10/88
4-7	11	10/88
5-1	11	10/88
5-2	11	10/88
5-3	11	10/88
5-4	11	10/88
5-5	11	10/88
5-6	11	10/88
5-7	11	10/88

PAGE	REVISION	DATED
5-8	11	10/88
5-9	11	10/88
5-10	11	10/88
5-11	11	10/88
5-12	11	10/88
5-13	11	10/88
5-14	11	10/88
5-15	11	10/88
5-16	11	10/88
6-1	11	10/88
6-2	11	10/88
6-3	11	10/88
6-4	11	10/88
6-5	11	10/88
6-6	11	10/88
6-7	11	10/88
6-8	11	10/88
6-9	11	10/88
6-10	11	10/88
Appendix A Description of Netvac title page	11	10/88
Report pages:		
A-1	11	10/88
A-2	11	10/88
A-3	11	10/88
A-4	11	10/88
A-5	11	10/88
Appendix B, Roadway Network and Capacities title page	11	10/88
Report pages:		
1	11	10/88
2	11	10/88
3	11	10/88
APPENDIX H - DOWNSTREAM SUSQUEHANNA RIVER WATER USAGE		
H-1	15	01/92
H-2	15	01/92
H-3	15	01/92
H-4	15	01/92
APPENDIX I - POPULATION UPDATE FOR SSES EMERGENCY PLANNING ZONE		
I-1	15	01/92
Population Update for SSES EPZ, cover page (Report Dated 07/82)	11	10/88
Population Update for SSES EPZ, title page (Report Dated 07/82)	11	10/88
Report pages (Report Dated 07/82):		
TOC	11	10/88

PAGE	REVISION	DATED
1-1	11	10/88
1-2	11	10/88
1-3	11	10/88
1-4	11	10/88
2-1	11	10/88
2-2	11	10/88
2-3	11	10/88
2-4	11	10/88
2-5	11	10/88
2-6	11	10/88
2-7	11	10/88
2-8	11	10/88
2-9	11	10/88
2-10	11	10/88
3-1	11	10/88
3-2	11	10/88
3-3	11	10/88
3-4	11	10/88
3-5	11	10/88
APPENDIX J - NUREG-0654 PLANNING STANDARD AND EVALUATION CRITERIA CROSS REFERENCE TO SSES EMERGENCY PLAN		
J-1	15	01/92
J-2	15	01/92
J-3	15	01/92
J-4	15	01/92
J-5	15	01/92
J-6	15	01/92
J-7	15	01/92
J-8	15	01/92
J-9	15	01/92
J-10	15	01/92
J-11	15	01/92
J-12	15	01/92
J-13	15	01/92

available. There is a unit kitchen with appliances and sink. Self-contained breathing apparatus are available.

8.1.3.5 Communication Links

The TSC communications system is comprised of three telephone networks (ETN, CTN, and FTS), VHF and UHF radios, and the plant PA system. They provide reliable primary and back-up communication links to emergency response facilities on- and off-site.

8.1.3.5.1 Telephones

The TSC uses the CTN system as primary communications with the ETN system available at various locations and the FTS 2000 reserved for federal government agencies.

8.1.3.5.2 Radio

The TSC has a four-channel 450 MHz UHF and a two-channel 150 MHz VHF radio system with digital voice privacy capability. The VHF radio is an emergency backup for communication with LCEMA, CEMA, and GOESC, and to communicate with the field monitoring teams. The UHF radio provides primary and backup security, emergency, operational and maintenance communication links.

8.1.3.5.3 Public Address System

The system provides two-way communications at handset stations. Each station may originate and receive communication by switching to either a pager channel or to one of five non-interfacing party-line channels.

8.1.3.6 Power Supply

The TSC is part of the existing power block as described in Chapter 8.0 of the FSAR.

8.1.3.7 Instrumentation

The TSC utilizes the same field sensors and signal conditioning equipment which is provided to monitor plant systems. TSC instrumentation is identical to the field instrumentation used to operate the plant. A detailed description of this instrumentation is provided in Chapter 7.0 of the FSAR.

8.1.3.8 TSC Data Presentation

The TSC includes human factors engineered man-machine capabilities to allow personnel to determine:

- plant conditions during normal operation
- plant steady-state conditions prior to an accident
- transient conditions producing an initiating event
- plant system dynamic behavior during an accident
- projected behavior and effects of offsite airborne radioactivity releases.

The man-machine interface is provided by devices tied to the SPDS, PCS, and RDAS in the TSC monitoring area: (Reference Figure 8.2).

- a) Two CRTs housed in the SPDS console.
- b) Two PCS UMCs which have graphic and parameter displays depicting the conditions of the plant systems.
- c) Video copiers for hard copy output of SPDS and PCS data.
- d) RDAS CRT and printer for display and output of STREAM data.

8.1.3.9 Records and Documents

The TSC contains up-to-date records and references for use during emergency conditions. (Reference Appendix D). Records are updated and managed by the SRMS utilizing Plant Administrative Procedures.

8.1.3.10 Security

The TSC is located within a plant vital area and is subject to the vital area access controls as identified in FSAR Section 13.6.

8.2 PP&L OFF-SITE EMERGENCY CENTERS

8.2.1 Media Operations Center

Initially, the Susquehanna Energy Information Center, located on U.S. Route 11, is utilized as the Media Operations Center. When the number of reporters anticipated is greater than the comfortable limits of the Information Center, or if a General Emergency is likely, the Berwick YMCA will be activated as the Media Operations Center. This facility has dedicated space to accommodate 500 people for news conferences.

If the 10-mile EPZ is evacuated, the Media Operation Center will be relocated to the PP&L Hazleton Division Service Center.

8.2.2 Emergency Operations Facility

The EOF is an emergency response facility located near the site. The EOF provides continuous management of PP&L activities during radiological emergencies which may have offsite impact.

The site location of the EOF is in North Central Pennsylvania in Luzerne County approximately 5-1/4 miles north of the Borough of Berwick in Salem Township, approximately 2,500 feet southwest of the control structure (Reference Figure 8.1). The site fronts on County Road T-438. Direct access to the site is maintained over a 12' wide stoned roadway from Rt. T-438 to the 500kV Switchyard.

The non-emergency activities of the EOF are such that its main function is not degraded. The EOF provides office space for the Nuclear Emergency Planning Group and computer maintenance personnel. Also, space is provided for training and operational support functions.

8.2.2.1 Architecture

The 16,500 square feet, one-story building is a rectangular structure, 167' long by 99' wide. The exterior walls are 12" reinforced concrete with a brick facing. The shed roof is a 9-1/2" reinforced concrete slab. The concrete was utilized to provide the required radiological protection.

Fifty parking stalls are provided at the EOF. In addition, parking space for five emergency response monitoring vans is provided at the side and rear of the building. Communication and power hookups are available for each van.

8.2.2.1.1 Spacial Layout Description

The EOF is divided into three areas (Reference Figure 8.3):

A. EMERGENCY OPERATIONS RESPONSE

This area is composed of offices for a receptionist, PP&L emergency managers and support, NRC, and conferencing. There is also a central work area for 35 people.

B. SUPPORT AREAS FOR EMERGENCY RESPONSE

The areas provided are mechanical and electrical equipment, toilets, kitchen and eating facilities, storage areas and conference rooms.

C. COMPUTER ROOM

A computer room supports SPDS and RDAS and ERDS. Also, an adjoining computer work room is used to operate and maintain the computer equipment.

8.2.2.1.2 Fire Protection

- a) Automatic wet pipe sprinklers on an ordinary hazard pipe schedule are provided throughout the building except below the computer room floor and above ceilings where no combustible materials are present.
- b) Computer Area

A total flooding, automatic Halon 1301 system protects the room volumes and the volume of the spaces beneath the floors of the computer room and computer work room with a 5% concentration.
- c) The Halon system is actuated by a cross-zoned product of combustion detection system.

8.2.2.2 Structural Classification

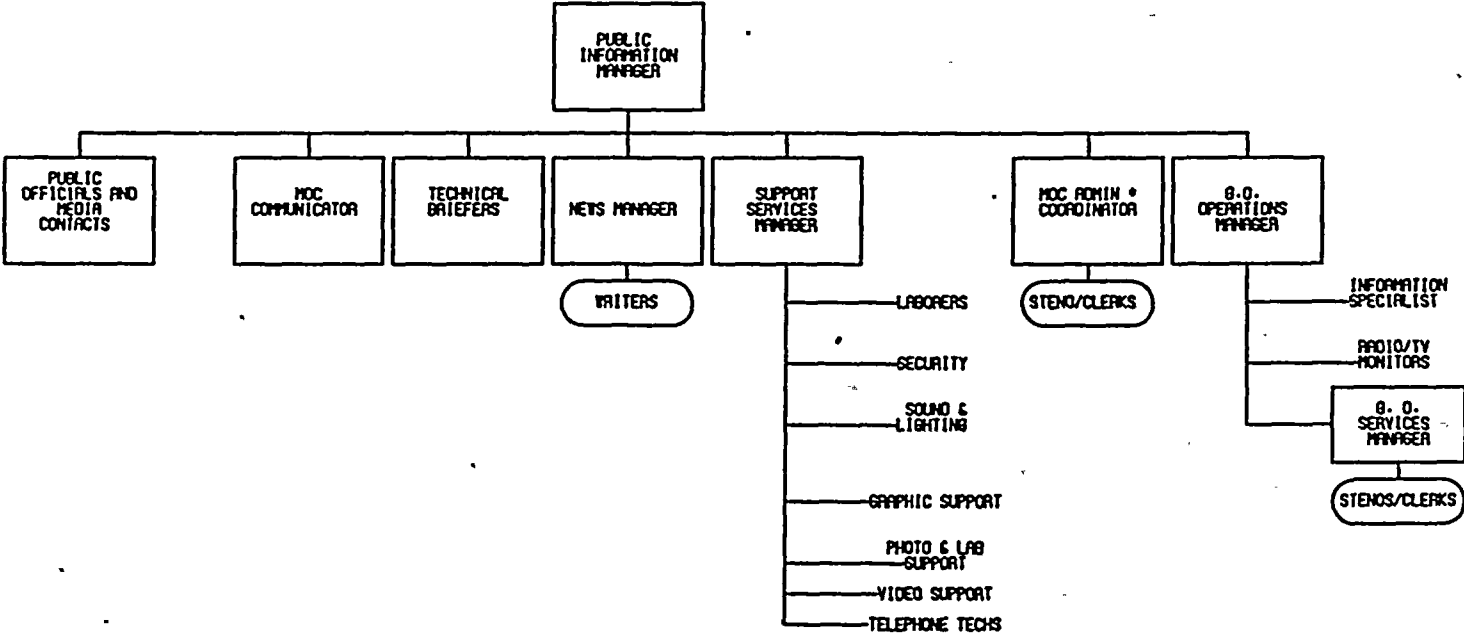
The EOF is classified as a structure, the failure of which would not result in release of significant radioactivity, and is not required for reactor shutdown. This structure is classified as Non-Category I.

8.2.2.3 Habitability

8.2.2.3.1 Post Accident Radiation Shielding

The EOF is designed to provide sufficient shielding to reduce by a factor of more than 5 the gamma radiation shine from external post accident sources, including both direct shine from the reactor building and from airborne radioactivity outside the EOF which is released from the reactor building. The walls and ceilings are designed to provide a minimum thickness of nine inches of concrete. Based on the attenuation of 0.7 MeV gamma radiation, this concrete provides a protection factor of greater than 5. In addition, all entrances, exits and penetrations have a labyrinth design which prevents direct shine from outside sources into any part of the building which is normally occupied without passing through at least nine inches of concrete.

MEDIA OPERATIONS CENTER ORGANIZATION



* WHEN MOC IS LOCATED AT THE YUCA, THE MOC ADMINISTRATIVE COORDINATOR REPORTS TO THE SUPPORT SERVICES MANAGER.

REV. 15 01-92

Susquehanna Steam Electric Station Units 1 and 2 Emergency Plan
MOC ORGANIZATION
FIGURE 6.4