

# ACCELERATED DISTRIBUTION DEMONSTRATION SYSTEM

## REGULATORY INFORMATION DISTRIBUTION SYSTEM (RIDS)

ACCESSION NBR: 9204010162      DOC. DATE: 92/03/27      NOTARIZED: NO      DOCKET #  
 FACIL: 50-387 Susquehanna Steam Electric Station, Unit 1, Pennsylvania      05000387  
 AUTH. NAME      AUTHOR AFFILIATION  
 FIELDS, J.S.      Pennsylvania Power & Light Co.  
 RECIP. NAME      RECIPIENT AFFILIATION  
 LEHMAN, S.J.      Pennsylvania, Commonwealth of

SUBJECT: NPDES noncompliance notification: on 920308, descaling of Unit 1 Condenser w/Betz DE-1762 conducted. Discharge pH from Unit 1 prior to mixing w/ Unit 2 blowdown was 6.25. Both parameters within NPDES limits.

DISTRIBUTION CODE: C001D      COPIES RECEIVED: LTR 1 ENCL 0 SIZE: 1  
 TITLE: Licensing Submittal: Environmental Rept Amdt & Related Correspondence

NOTES: LPDR 1 cy Transcripts. 05000387

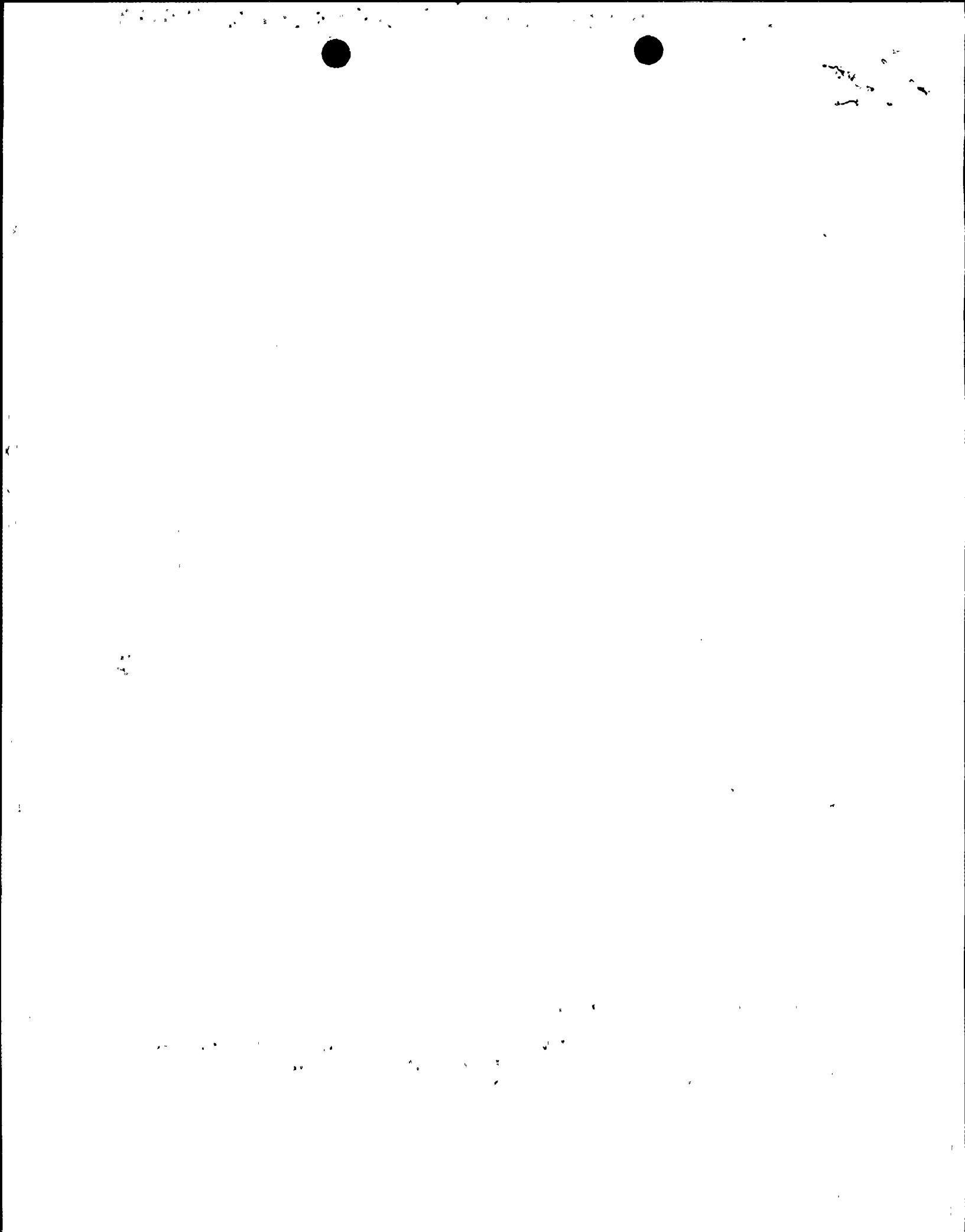
	RECIPIENT ID CODE/NAME	COPIES		RECIPIENT ID CODE/NAME	COPIES	
		LTR	ENCL		LTR	ENCL
	PD1-2 LA	3	3	PD1-2 PD	1	1
	RALEIGH, J.	1	1			
INTERNAL:	ACRS	6	6	NRR/DET/ESGB 8D	1	1
	OC/LFMB	1	0	OGC/HDS2	1	0
	<del>REG-FILE</del> 01	1	1	RGN1 DRSS/RPB	1	1
EXTERNAL:	EG&G SIMPSON, F	2	2	NRC PDR	1	1
	NSIC	1	1			
NOTES:		2	2			

NOTE TO ALL "RIDS" RECIPIENTS:

PLEASE HELP US TO REDUCE WASTE! CONTACT THE DOCUMENT CONTROL DESK, ROOM P1-37 (EXT. 20079) TO ELIMINATE YOUR NAME FROM DISTRIBUTION LISTS FOR DOCUMENTS YOU DON'T NEED!

TOTAL NUMBER OF COPIES REQUIRED: LTR 22 ENCL 20

*Er-1*





Pennsylvania Power & Light Company

Two North Ninth Street • Allentown, PA 18101-1179 • 215/774-5151

March 27, 1992

Mr. Stanley J. Lehman  
Water Quality Specialist Supervisor  
Bureau of Water Quality  
Pennsylvania Department of Environmental Resources  
90 East Union Street, 2nd Floor  
Wilkes-Barre, PA 18701-3296

SUSQUEHANNA STEAM ELECTRIC STATION  
SAMPLE RESULTS  
UNIT 1 CONDENSER DESCALING  
NPDES PERMIT NO. PA 0047325  
CCN 741326 FILE R9-8A  
PLE- 15425

Dear Mr. Lehman:

Descaling of the Unit 1 Condenser with Betz DE-1762 was conducted on March 8, 1992. As discussed in letter PLE-15205, dated February 3, 1992, we planned on sampling for pH and zinc in the blowdown (outfall 071) to make certain we met permit limits.

Discharge pH from Unit 1 prior to mixing with Unit 2 blowdown was 6.25. Also, once the Unit 1 discharge was opened, the combined (Units 1 and 2) blowdown concentration for total zinc ranged between 0.73 and 0.86 ppm. Both parameters were within NPDES permit limits.

If you have any questions, please call me at (215) 774-7889.

Sincerely,

Jerome S. Fields  
Sr. Environmental Scientist-Nuclear

jsf/ltc132a(25)

cc: NRC Document Control Desk  
NRC Region I  
Mr. J. J. Raleigh, NRC Project Manager

310073  
9204010162 920327  
PDR ADDCK 05000387  
S PDR

C001 .110



Handwritten scribbles or marks in the top right corner.