

ACCELERATED DISTRIBUTION DEMONSTRATION SYSTEM

REGULATORY INFORMATION DISTRIBUTION SYSTEM (RIDS)

ACCESSION NBR: 8810190102 DOC. DATE: 88/09/30^{10/11} NOTARIZED: NO DOCKET #
 FACIL: 50-387 Susquehanna Steam Electric Station, Unit 1, Pennsylv 05000387
 50-388 Susquehanna Steam Electric Station, Unit 2, Pennsylv 05000388
 AUTH. NAME AUTHOR AFFILIATION
 SCHMIDT, D.A. Pennsylvania Power & Light Co.
 SAXTON, C..H Pennsylvania Power & Light Co.
 RECIP. NAME RECIPIENT AFFILIATION

SUBJECT: "Drinking Water Rept for Sept 1988." W/881011 ltr.

DISTRIBUTION CODE: IE25D COPIES RECEIVED: LTR 1 ENCL 1 SIZE: 2
 TITLE: Environmental Monitoring Rept (per Tech Specs)

NOTES: LPDR 2 cys Transcripts. 05000387/
 LPDR 2 cys Transcripts. 05000388

	RECIPIENT		COPIES			RECIPIENT		COPIES	
	ID	CODE/NAME	LTTR	ENCL		ID	CODE/NAME	LTTR	ENCL
	PD1-2	LA	1	0		PD1-2	PD	1	1
	THADANI,	M	5	5					
INTERNAL:	ACRS		1	1	AEOD/DSP/TPAB			1	1
	ARM TECH ADV		1	1	NRR/DEST/ADE 8H			1	1
	NRR/DREP/RPB	10	4	4	NUDOCS-ABSTRACT			1	1
	REG FILE	01	1	1	RES/DSIR DEPY			1	1
	RGN1 FILE	02	1	1	RGN2/DRSS/EPRPB			1	1
EXTERNAL:	LPDR		2	2	NRC PDR			1	1
NOTES:			2	2					

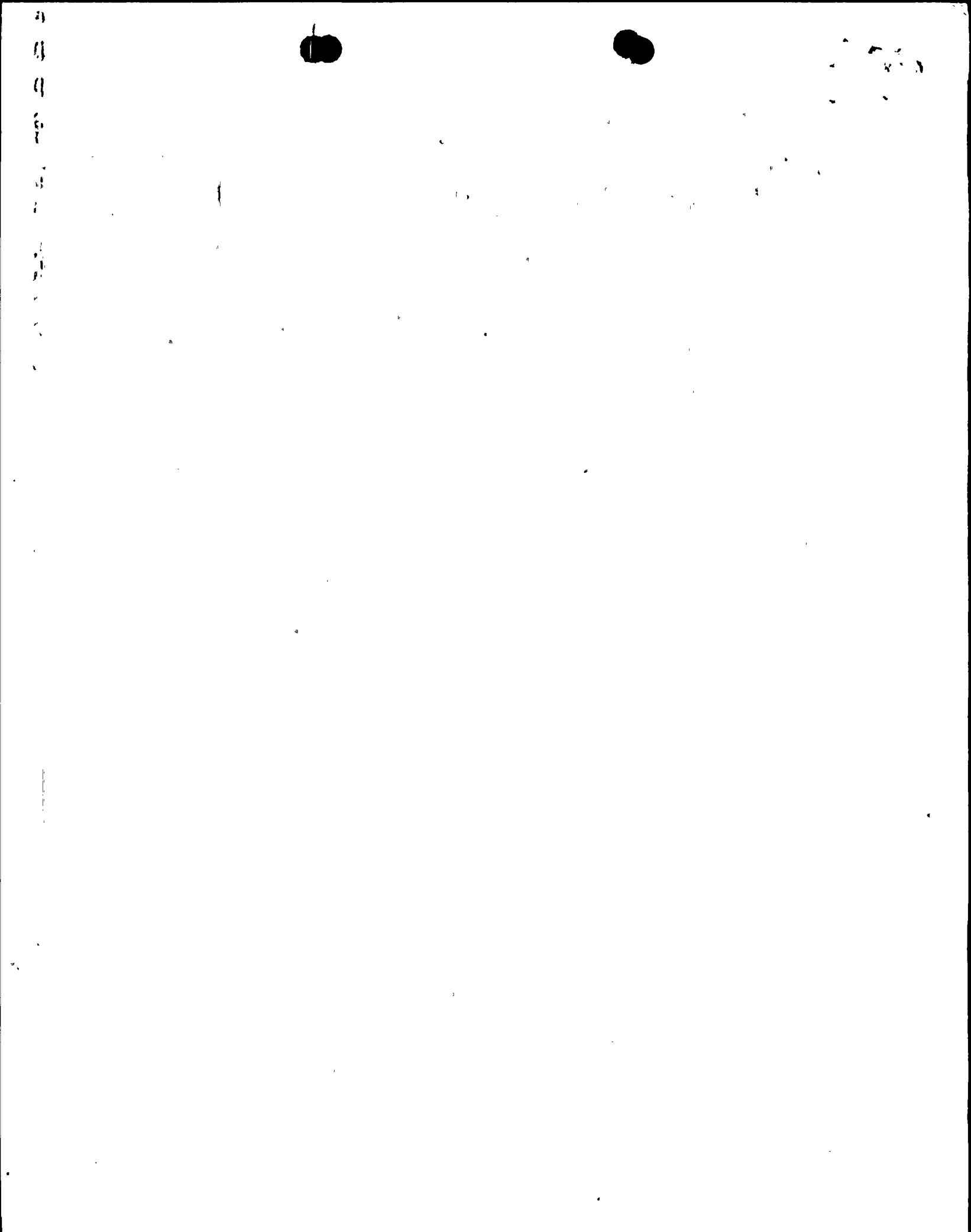
NOTE TO ALL "RIDS" RECIPIENTS:

PLEASE HELP US TO REDUCE WASTE! CONTACT THE DOCUMENT CONTROL DESK,
 ROOM P1-37 (EXT. 20079) TO ELIMINATE YOUR NAME FROM DISTRIBUTION
 LISTS FOR DOCUMENTS YOU DON'T NEED!

TOTAL NUMBER OF COPIES REQUIRED: LTTR 25 ENCL 24

E/C/W

R
I
D
S
A
D
S
R
I
D
S
A
D
S



PB-1 SUSQUEHANNA S.E.S. DRINKING WATER REPORT

PERMIT NUMBER 4085504 MONTH: September, 1988

PREPARED BY: Dennis A. Schmidt

DATE: 10-3-88

APPROVED BY: [Signature]

DATE: 10-3-88

DATE	DAILY FLOWS in gpd	FILTRATION RATES		TURBIDITIES IN NTU			
		DAILY AVERAGE gpm/ft ²	DAILY MAXIMUM gpm/ft ²	RAW WATER		FILTERED WATER	
				DAILY AVERAGE	DAILY MAXIMUM	DAILY AVERAGE	DAILY MAXIMUM
1	182200	0.91	1.56	12.3	17.0	0.15	0.19
2	175100	0.77	1.53	11.0	13.0	0.14	0.23
3	159400	0.70	1.40	9.3	13.0	0.12	0.17
4	175100	0.77	1.40	7.7	11.0	0.12	0.18
5	199300	0.88	1.85	8.3	12.0	0.12	0.25
6	171600	0.76	1.43	8.0	11.0	0.18	0.76
7	171800	0.76	1.46	15.0	20.0	0.18	0.40
8	177600	0.78	0.83	15.7	22.0	2.10	7.0
9	194100	0.86	1.15	16.0	19.0	0.17	0.30
10	209100	0.92	1.72	14.7	20.0	0.18	0.23
11	202000	0.89	1.85	14.0	17.0	0.23	0.27
12	216300	0.96	1.91	15.5	19.0	0.22	0.43
13	218600	0.97	1.72	16.0	18.0	0.24	0.40
14	209900	0.93	1.43	16.0	20.0	0.20	0.50
15	164700	0.73	1.46	14.0	17.0	0.22	0.26
16	209300	0.93	1.40	14.0	17.0	0.25	0.29
17	170500	0.75	0.82	14.7	18.0	0.28	0.30
18	168300	0.74	0.76	13.7	16.0	0.25	0.29
19	185600	0.82	1.40	8.7	19.0	0.23	0.60
20	181300	0.80	1.43	7.7	10.0	0.32	0.57
21	213600	0.94	1.56	7.9	12.0	0.20	0.45
22	210300	0.93	1.91	7.5	11.0	0.11	0.20
23	158000	0.70	1.31	6.0	18.0	0.19	0.90
24	*	*	*	*	*	*	*
25	*	*	*	*	*	*	*
26	*	*	*	*	*	*	*
27	*	*	*	*	*	*	*
28	*	*	*	*	*	*	*
29	209600	0.93	1.94	7.0	19.0	0.50	0.70
30	209200	0.92	1.72	6.0	10.0	0.53	0.69
31	—	—	—	—	—	—	—

* Drinking water supplied by site well

8810190102 880930
PDR ADOCK 05000387
R PDC



Pennsylvania Power & Light Company

Two North Ninth Street • Allentown, PA 18101 • 215 / 770-5151

October 11, 1988

Mr. Russell Sager
Sanitarian
Bureau of Community Environmental Control
Pennsylvania Department of Environmental Resources
290 South Pennsylvania Boulevard
Wilkes-Barre, PA 18701

SUSQUEHANNA STEAM ELECTRIC STATION
DRINKING WATER OPERATIONAL REPORT - SEPTEMBER 1988
PWS 2400998, OPERATING PERMIT #4085504
CCN 741326 FILE R9-8B
PLE-10919

Dear Mr. Sager:

Pursuant to Special Condition 2 of Public Water Supply Permit No. 4085504, enclosed please find the Susquehanna Steam Electric Station drinking water operational report for September 1988.

Elevated turbidity was detected at the filtered water outlet on September 8, 1988. This excursion was attributed to a blockage in the alum feed line. This blockage was cleared expeditiously utilizing a service air purge capability and the finished water turbidity rapidly returned to less than 0.2 NTU. All turbidity values reported at the entrance to the domestic water distribution system were within the maximum contaminant level required by the Pennsylvania Department of Environmental Resources.

The site well system (PWS 2400994) supplied drinking water to the station September 24 throughout 28, 1988, under an emergency permit issued by the Pennsylvania Department of Environmental Resources.

If you have any questions, please contact me at (215) 770-7891.

Respectfully yours,

Curtis H. Saxton
Environmental Specialist-Nuclear

chs1te7002o(25)

Enclosure

cc: Mr. J. P. LaBuz Pa DER
Dr. W. R. Butler US-NRC

TEAS
11

