

CATEGORY II

GENERAL NOTES

1. ALL WORK ON THIS DRAWING SHALL BE IN ACCORDANCE WITH JOB SPECIFICATIONS NOTED.
2. ALL SURVEYING SHALL BE PERFORMED BY A LICENSED SURVEYOR.
3. INDICATES DIRECTION OF GRADING.
4. ALL GRADE SLIPS SHALL BE FILL-BED GRADE SLIP. FILL-BED SHALL BE FILL OF GRANULAR BASE COURSE TYPE ON ALL AREAS MARKED ABOVE.
5. ALL SLOPE GRADIENTS OF CUT AND FILL SHALL BE AS SHOWN. ALL OTHER AREAS MARKED SHEDDING SHALL BE SHEDDING GRADIENTS SHALL BE DETERMINED IN ACCORDANCE WITH REQUIREMENTS OF SPEC. A-201.
6. TREES AND VEGETATION WITHIN THE GRADED AREAS SHALL BE REMOVED. LOGS AND BRUSH SHALL BE REMOVED.
7. A COMPLETED FILL FOR GRADING SHALL BE COVERED WITH TOP SOIL.

REFERENCE DRAWINGS

- S-171 GRADING PLAN - PLANT AREA
- S-172 GRADING PLAN - PLANT AND SWITCHYARD AREA
- S-173 GRADING PLAN - PLANT AREA
- S-174 GRADING PLAN - PLANT AREA
- S-175 GRADING PLAN - PLANT AREA

USAR FIG. 2.4-3-2

BEST COPY AVAILABLE
MAY NOT REPRODUCE LEGIBLY

NO. REVISED	DATE	BY	REASON
1	08/17/02	WOLF CREEK	ISSUE FOR CONSTRUCTION

WOLF CREEK
Nuclear Engineering Corporation

ELECTRONIC APPROVAL

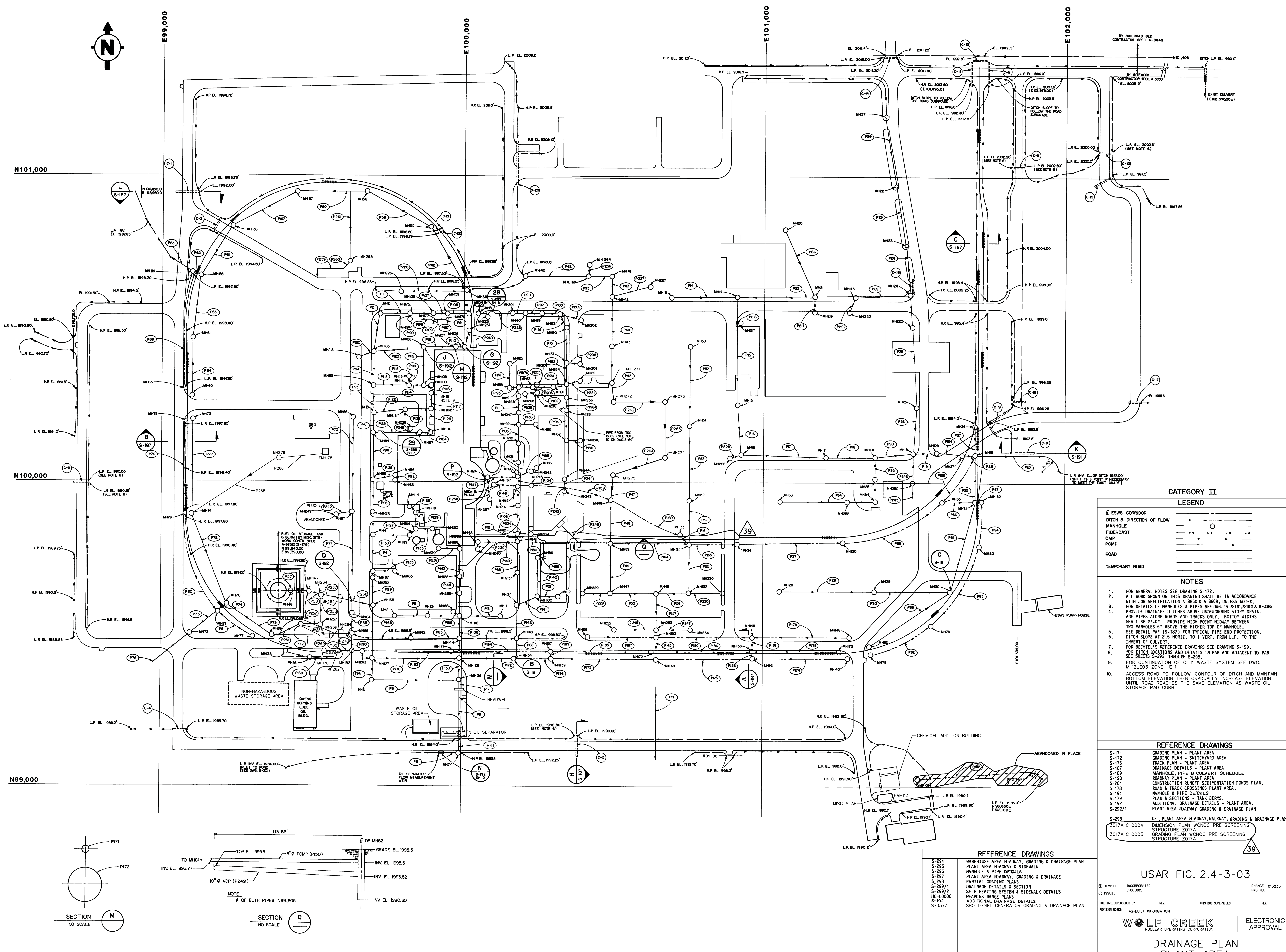
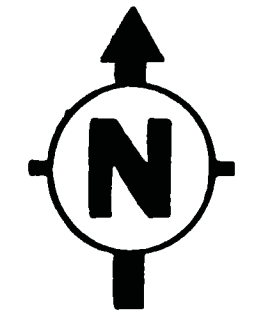
GRADING PLAN
SWITCHYARD AREA

SCALE: 1" = 100'-0"

DATE: 08/17/02

PROJECT NO.: S-0172

SHEET NO.: 07



CATEGORY II

LEGEND

ESWS CORRIDOR	---
DITCH & DIRECTION OF FLOW	--->---
MANHOLE	○
FIBERCAST	○
CMP	○
PCMP	○
ROAD	---
TEMPORARY ROAD	---

NOTES

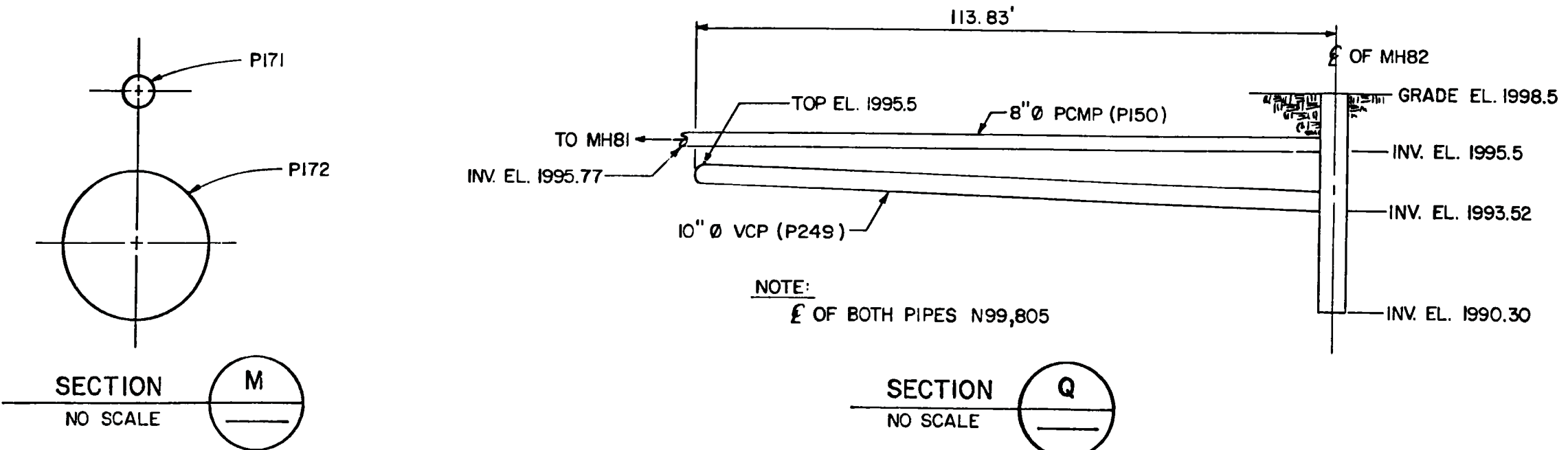
- FOR GENERAL NOTES SEE DRAWING S-172.
- ALL WORK SHOWN ON THIS DRAWING SHALL BE IN ACCORDANCE WITH JOB SPECIFICATION A-3650 & A-3659, UNLESS NOTED.
- FOR DETAILS OF MANHOLES & PIPES SEE DWG.'S S-181, S-182 & S-296.
- PROVIDE DRAINAGE DITCHES ABOVE UNDERGROUND STORM DRAINAGE PIPES ALONG ROADS AND TRACKS ONLY. BOTTOM WIDTHS SHALL BE 2'-0". PROVIDE HIGH POINT MIDWAY BETWEEN TWO MANHOLES 6" ABOVE THE HIGHER TOP OF MANHOLE. SEE DETAIL "A" (S-187) FOR TYPICAL PIPE END PROTECTION. DITCH SLOPE AT 2.5 HORIZ. TO 1 VERT. FROM L.P. TO THE INVERT OF CULVERT.
- FOR RECHTEL'S REFERENCE DRAWINGS SEE DRAWING S-199.
- FOR DITCH LOCATIONS AND DETAILS IN PAB AND ADJACENT TO PAB SEE SHEETS S-292 THROUGH S-298.
- FOR CONTINUATION OF OIL WASTE SYSTEM SEE DWG. M-12/EO3, ZONE 1-1.
- ACCESS ROAD TO FOLLOW CONTOUR OF DITCH AND MAINTAIN BOTTOM ELEVATION THEN GRADUALLY INCREASE ELEVATION UNTIL ROAD REACHES THE SAME ELEVATION AS WASTE OIL STORAGE PAD CURB.

REFERENCE DRAWINGS

- S-171 GRADING PLAN - PLANT AREA
- S-172 GRADING PLAN - SWITCHYARD AREA
- S-176 TRACK PLAN - PLANT AREA
- S-187 DRAINAGE DETAILS - PLANT AREA
- S-189 MANHOLE, PIPE & CULVERT SCHEDULE
- S-193 ROADWAY PLAN - PLANT AREA
- S-201 CONSTRUCTION RUNOFF SEDIMENTATION PONDS PLAN.
- S-178 ROAD & TRACK CROSSINGS PLANT AREA.
- S-191 MANHOLE & PIPE DETAILS
- S-179 PLAN & SECTIONS - TANK BEAMS.
- S-192 ADDITIONAL DRAINAGE DETAILS - PLANT AREA.
- S-292/1 PLANT AREA ROADWAY GRADING & DRAINAGE PLAN
- S-293 DET. PLANT AREA ROADWAY, WALKWAY, GRADING & DRAINAGE PLAN
- 2017A-C-0004 DIMENSION PLAN, WCNOC PRE-SCREENING STRUCTURE Z017A
- 2017A-C-0005 GRADING PLAN, WCNOC PRE-SCREENING STRUCTURE Z017A

USAR FIG. 2.4-3-03

REVISION	INCORPORATED	CHANGE	012323
ISSUED	CHG. DOC.	FIG. NO.	
THIS DWG. SUPERSEDES		REV.	REV.
REVISION NOTES		AS-BUILT INFORMATION	
WOLF CREEK		ELECTRONIC APPROVAL	
NUCLEAR OPERATING CORPORATION			
DRAINAGE PLAN			
PLANT AREA			
SCALE	DRAWING NUMBER	SHEET	REV.
1"=100'	S-0186	39	



BEST COPY AVAILABLE. MAY NOT REPRODUCE LEGIBLY.

Serial Surveys

MANHOLE SCHEDULE (CONT.)

Table with columns: NO., INV. EL., TOP EL., LOCATION (NORTH COORD., EAST COORD.), DIA., TYPE, REMARKS. Contains 36 rows of manhole data.

MANHOLE SCHEDULE (CONT.)

Table with columns: NO., INV. EL., TOP EL., LOCATION (NORTH COORD., EAST COORD.), DIA., TYPE, REMARKS. Contains 36 rows of manhole data.

SANITARY SEWER MANHOLE SCHEDULE

Table with columns: NO., INV. EL., TOP EL., LOCATION (NORTH COORD., EAST COORD.), DIA., TYPE, REMARKS. Contains 36 rows of sanitary sewer manhole data.

CW VENT MANHOLE SCHEDULE

Table with columns: NO., TOP/FDN ELEV., TOP/M. H. ELEV., LOCATION (NORTH COORD., EAST COORD.), DIA., TYPE, REMARKS. Contains 5 rows of CW vent manhole data.

VALVE VAULT MANHOLE SCHEDULE

Table with columns: NO., TOP/FDN ELEV., TOP/M. H. ELEV., LOCATION (NORTH COORD., EAST COORD.), DIA., TYPE, REMARKS. Contains 1 row of valve vault manhole data.

NOTES

- 1. SEE NOTES ON DRAWING S-189 SHT. 1
2. ALL SEWAGE TREATMENT MANHOLES SHALL BE PER SPEC.
3. ALL SEWAGE TREATMENT MANHOLES SHALL BE FURNISHED WITH CLOSED LID TOPS...

LEGEND

FOR LEGEND, SEE DRAWING S-0189 SHT. 1.

REFERENCE DRAWINGS

- A-0501 SANITARY SEWER AND POTABLE WATER SYSTEM SHT. 1
A-0502 SANITARY SEWER AND POTABLE WATER SYSTEM SHT. 2
S-0172 GRADING PLAN - SWITCHYARD AREA...

USAR FIG. 2.4-3-4B

Revision table with columns: REV., INCORPORATED, CHG. DOC., CHANGE, PGT. NO., and WOLF CREEK logo.

MANHOLE, PIPE & CULVERT SCHEDULE

Scale, Drawing Number (S-0189), Sheet (2 of 12), and Rev. (12) information.

PIPE SCHEDULE (CONT.)

NO.	SIZE & TYPE	GAGE	FROM MANHOLE	TO MANHOLE	INVERT EL.		REMARKS
					H. P.	L. P.	
P238	8" DIA. CMP	16	239	166	1994.50	1994.00	
P239	6" DIA. CMP	16	240	168	1995.50	1996.25	
P240	8" DIA. CMP	16	237	106	1995.30	1994.33	SEE DET. DWG. S-0299 SHT. 1
P241	12" DIA. CMP	16	246	62	1995.00	1994.75	
P242	18" DIA. CMP	16	249	67	1995.00	1994.39	ABANDONED AND PLUGGED
P243	6" DIA. CMP	16	243	P-158	1995.75	1995.63	DROP CONN. DET. NO. 1 SEE DWG. S-0296
P244	6" DIA. CMP	16	244	P-158	1995.75	1995.63	DROP CONN. DET. NO. 1 SEE DWG. S-0296
P245	18" DIA. SCMP	16	—	250	1996.50	1996.25	SLOTTED DRAIN
P246	18" DIA. CMP	16	250	18	1995.00	1989.50	
P247	15" DIA. CMP	16	254	253	1995.32	1994.15	
P248	15" DIA. CMP	16	255	253	1995.45	1994.15	
P249	12" DIA. CMP	16	238	P-125	1996.00	1993.28	DROP CONN. DET. NO. 1 SEE DWG. S-0296
P250	12" DIA. CMP	16	258	257	1993.00	1992.20	
P251	12" DIA. CMP	16	CATCH BASIN	258	1993.75	1993.00	PROVIDE BEND AT N99.495 / E99.487
P252	12" DIA. CMP	16	259	224	1994.46	1994.16	
P253	12" DIA. CMP	16	257	234	1992.20	1990.72	
P254	18" DIA. CMP	16	—	16	1995.71	1994.47	TEMP. LINE IS TO REMAIN
P255	8" DIA. PCMP	16	260	202	1997.83	1997.83	SURFACE DRAIN
P256	18" DIA. CMP	16	264	169	2003.30	1994.80	
P258	18" DIA. CMP	16	267	124	1994.60	1994.00	
P259	6" DIA. PCMP	16	—	P-260	1997.30	1996.83	
P260	6" DIA. CMP	16	P-259	268	1996.83	1996.79	
P261	12" DIA. CMP	16	268	P-60	1995.55	1993.24	
P262	42" DIA. RCP	272	273	273	1991.69	1991.47	
P263	42" DIA. RCP	273	274	274	1991.47	1991.23	
P264	42" DIA. RCP	274	275	275	1991.23	1990.99	
P265	18" DIA. CHDPE	276	74	74	1993.75	1992.05	
P266	1 1/2" DIA. PVC	EMHI 75	276	276	1995.6	1994.9	EMHI 75 SUMP DRAIN
P267	8 EA. 18" CMP	16	234	282	1990.72	1990.55	USE ALUMINIZED OR GALVANIZED CMP
P268	18" DIA. CMP	16	282	135	1990.55	1990.23	FORMERLY PARY OF P58
P269	8 EA. 18" CMP	16	284	283	1991.75	1991.39	USE ALUMINIZED OR GALVANIZED CMP
P270	21" DIA. CMP	16	68	284	1991.02	1991.75	FORMERLY PART OF P72

CULVERT SCHEDULE

NO.	GAGE	SIZE & TYPE	LENGTH	SLOPE %	INLET COORD.		INVERT EL.	OUTLET COORD.		INVERT EL.	REFER. DWG. S.	RIPRAP LIMITS INLET				RIPRAP LIMITS OUTLET				REMARKS
					N.-S.	E.-W.		N.-S.	E.-W.			A	B	H	D	A	B	H	D	
C-1	12	1-42" DIA. CMP	0.44	100,945.00	99,114.95	1992.0	100,945.00	99,035.05	1988.00	S-186	11'-6"	3'-6"	3'-6"	10'-0"	10'-0"	3'-6"	SEE SEC. 'L-L'(S-0187)			
C-2	16	1-12" DIA. CMP	0.56	100,822.20	99,153.70	1994.50	100,869.20	99,100.30	1994.20		5'-0"	1'-6"	5'-0"	5'-0"	2'-6"					
C-3	12	1-36" DIA. CMP	0.45	99,999.00	99,763.00	1987.50	99,999.00	99,707.00	1987.25		10'-0"	4'-0"	50'-0"	10'-0"	3'-0"	SEE SEC. 'R-R'(S-0191)				
C-4	14	1-30" DIA. CMP	0.36	99,100.00	99,088.00	1989.70	99,100.00	99,032.00	1989.50		10'-0"	3'-0"	10'-0"	10'-0"	2'-6"					
C-5	14	2-24" DIA. CMP	0.46	99,161.88	100,457.00	1998.80	99,853.30	100,457.00	1988.00		10'-0"	3'-0"	10'-0"	10'-0"	2'-0"	3'-0" O.C. SEE SEC. 'H-H'(S-0187)				
C-7	14	1-24" DIA. CMP	0.49	100,270.00	102,204.90	1996.25	100,270.00	102,252.00	1996.00		6'-0"	2'-6"	6'-0"	10'-0"	2'-0"					
C-8	14	1-12" DIA. CMP	0.38	100,105.00	101,006.55	1993.00	100,105.00	101,098.75	1988.00		6'-6"	4'-0"	10'-0"	10'-0"		SEE SEC. 'K-K'(S-0191)				
C-9	14	1-30" DIA. CMP	0.39	101,012.00	101,012.00	2000.70	101,012.00	101,065.00	2000.50		6'-6"	2'-6"	6'-6"	6'-6"	2'-6"					
C-10	12	1-36" DIA. CMP	0.43	101,088.00	102,091.00	2000.00	101,088.00	102,149.00	1999.75		6'-6"	3'-0"	6'-6"	6'-6"	3'-0"					
C-11	14	1-24" DIA. CMP	0.45	101,322.00	101,684.00	1992.60	101,388.00	101,684.00	1992.50		5'-0"	2'-6"	7'-0"	3'-0"						
C-12	16	1-18" DIA. CMP	0.44	101,321.00	101,736.00	1992.50	101,389.00	101,736.00	1992.20		5'-0"	2'-0"	7'-0"	3'-0"						
C-13	12	1-36" DIA. CMP	0.70	101,391.00	101,687.00	1992.50	101,391.00	101,733.00	1992.20		6'-6"	10'-0"	3'-0"	6'-6"	10'-0"	3'-0"				
C-14	16	1-18" DIA. CMP	0.40	101,400.00	101,389.00	2011.20	101,400.00	104,440.00	2011.00		6'-0"	5'-0"	6'-0"	5'-0"	2'-0"					
C-15	14	1-24" DIA. CMP	0.32	100,978.00	102,086.00	1999.75	101,007.00	102,158.00	1999.50		6'-0"	2'-0"	6'-0"	6'-0"	2'-6"					
C-16	16	1-18" DIA. CMP	0.50	100,270.00	101,014.00	1996.50	100,270.00	101,064.00	1996.25		6'-0"	2'-0"	6'-0"	6'-0"	2'-0"					
C-18	16	1-12" DIA. CMP	0.91	100,666.50	101,482.00	2004.60	100,623.50	101,492.00	2004.2		3'-0"	1'-6"	3'-0"	1'-6"						
C-19	16	1-30" DIA. CMP	0.57	100,214.70	101,743.90	1993.60	100,164.50	101,778.50	1993.50	S-186	6'-6"	5'-0"	2'-6"	6'-6"	10'-0"	2'-6"				
C-20	14	1-12" DIA. CMP	0.3	101,126.00	100,172.83	2005.40	100,975.00	100,172.83	2000.50	S-186	5'-0"	5'-0"	2'-6"	5'-0"	5'-0"	2'-6"				
C-21	16	1-12" DIA. CMP	1.25	100,034.14	99,923.33	1997.11	100,020.00	99,908.31	1996.86	S-186										
C-22	16	1-12" DIA. CMP	2.85	100,832.99	99,924.41	1997.20	100,819.72	99,909.44	1996.79	S-186										

NOTES

- SEE NOTES ON DWG. S-189 SHT. 1.
- ALL CORRUGATIONS SHALL BE 2 2/3" X 1/2" EXCEPT 8" DIA. & 10" DIA. PIPES SHALL HAVE 1 1/2" X 1/4" CORRUGATIONS, UNLESS NOTED.
- PROVIDE 6" OF RIPRAP OVER 6" OF GRAVEL BEDDING AT THE JUNCTION OF TWO DITCHES AT A POINT WHERE SLOPE CHANGES IN A DITCH AND AT END SECTIONS OF PIPES & CULVERTS, OVER A LENGTH OF 15' UPSTREAM & DOWNSTREAM OVER A WIDTH OF 10' AND FOR A HEIGHT OF 2'. UNLESS NOTED. PIPES CONNECTING THE XFMR VAULT SUMPS SHALL BE UP TO THE INSIDE FACE OF WALL.

LEGEND

FOR LEGEND, SEE DRAWING S-0189 SHT. 1.

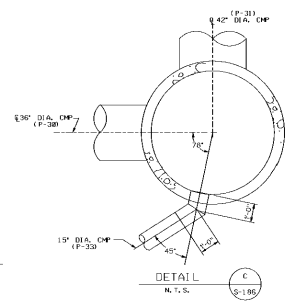
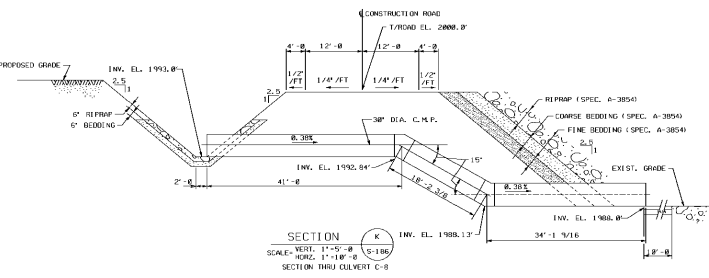
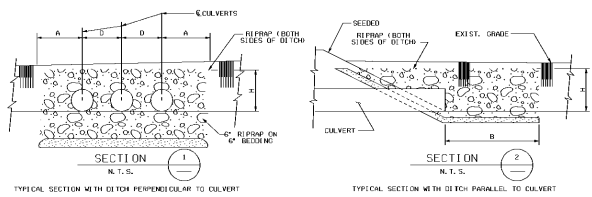
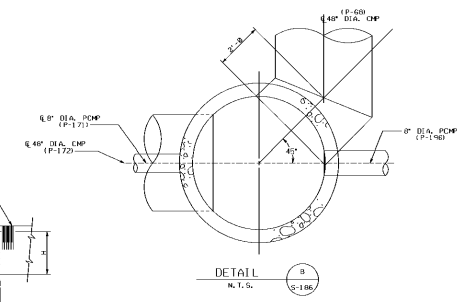
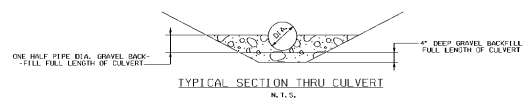
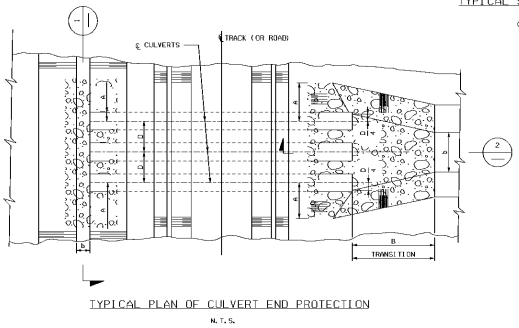
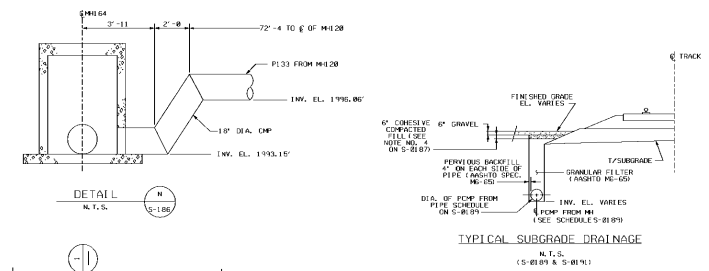
REFERENCE DRAWINGS

- A-0501 SANITARY SEWER AND POTABLE WATER SYSTEM SHT. 1
- A-0502 SANITARY SEWER AND POTABLE WATER SYSTEM SHT. 2
- S-0172 GRADING PLAN - SWITCHYARD AREA.
- S-0179 PLANS AND SECTIONS - TANK BERMS.
- S-0186 DRAINAGE PLAN PLANT AREA.
- S-0187 DRAINAGE DETAILS PLANT AREA.
- S-0191 MANHOLE AND PIPE DETAILS.
- S-0192 ADDITIONAL DRAINAGE DETAILS PLANT AREA.
- S-0199 INTERFACE LOC. - ROOF DRAINS, XFMR VAULT DRAINS AND OILY WASTE.
- S-0292 PLANT AREA ROADWAY, GRADING AND DRAINAGE PLAN SHEET 1.
- S-0293 DETAIL PLANT AREA ROADWAY, WALKWAY, GRADING AND DRAINAGE PLAN - SHEET 2.
- S-0294 WAREHOUSE AREA ROADWAY, GRADING AND DRAINAGE PLAN - SHEET 3.
- S-0296 MANHOLE AND PIPE DETAILS.
- S-0297 PLANT AREA ROADWAY, GRADING AND DRAINAGE.
- S-0298 PARTIAL GRADING PLANS.
- S-0299 SHT. 1 DRAINAGE DETAILS AND SECTIONS.
- S-0299 SHT. 2 SELF HEATING SYSTEM AND SIDEWALK DETAILS.
- S-0299 SHT. 3 GRADING, ROADWAY AND HANDHOLD DETAILS.
- S-0573 SBO DIESEL GENERATOR GRADING & DRAINAGE PLAN

USAR FIG. 2.4-3-4D

REVISION	INCORPORATED OR CHG. DOC.	OR 00100750	CHANGE FIG. NO.
ISSUED			
THIS Dwg. SUPERSEDES BY		REV.	THIS Dwg. SUPERSEDES
REVISION NOTES		REVISED PIPE P239. ADDED USAR FIGURE NUMBER	
WOLF CREEK		ELECTRONIC APPROVAL	
NUCLEAR OPERATING CORPORATION			
MANHOLE, PIPE & CULVERT SCHEDULE			
SCALE	DRAWING NUMBER	SHEET	REV
NONE	S-0189	4	07

Key: J. Smith
 Released to: Government Customers, Release Date: 08/04/04 04:11:47 PM



LEGEND	
M.H. = MANHOLE	
TRFMR = TRANSFORMER	
V.S. = VAULT DUMP	

GENERAL NOTES	
1. FOR GENERAL NOTES SEE DRAWING S-172.	
2. ALL NOTES SHOWN ON THIS DRAWING SHALL BE IN ACCORDANCE WITH JOB SPECIFICATION A-3850 UNLESS NOTED.	

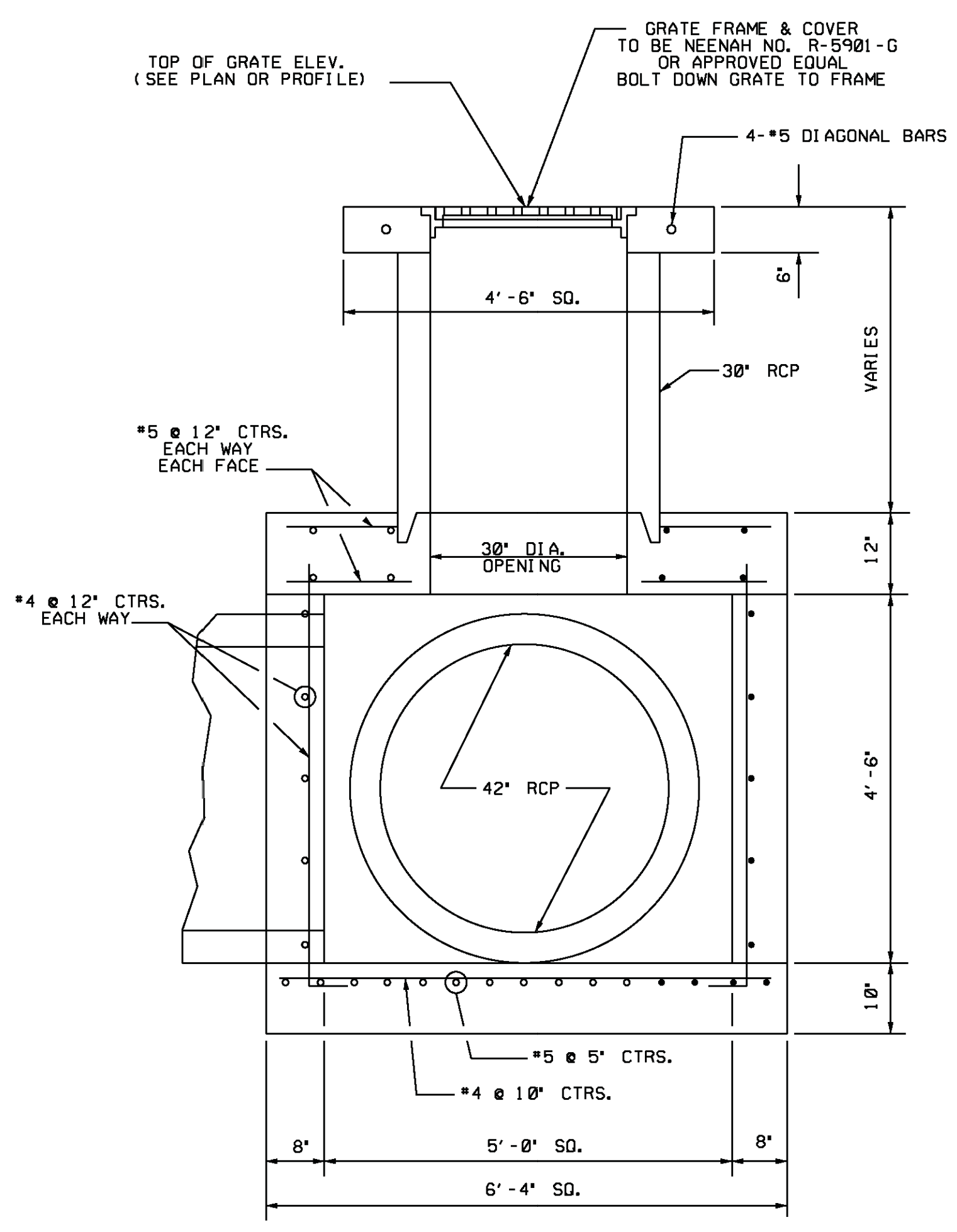
REFERENCE DRAWINGS	
S-8172	GRADING PLAN - SWITCHYARD AREA
S-8186	GRADING PLAN - PLANT AREA
S-8187	EROSION DETAILS - PLANT AREA
S-8189	MANHOLE, PIPE & CULVERT SCHEDULE
S-8190	INTERFACE LOCATIONS - DITCH DRAINING, TRANSFORMER VAULT DRAINING, & DILLY WASTE

USAR FIG. 2.4-3-05

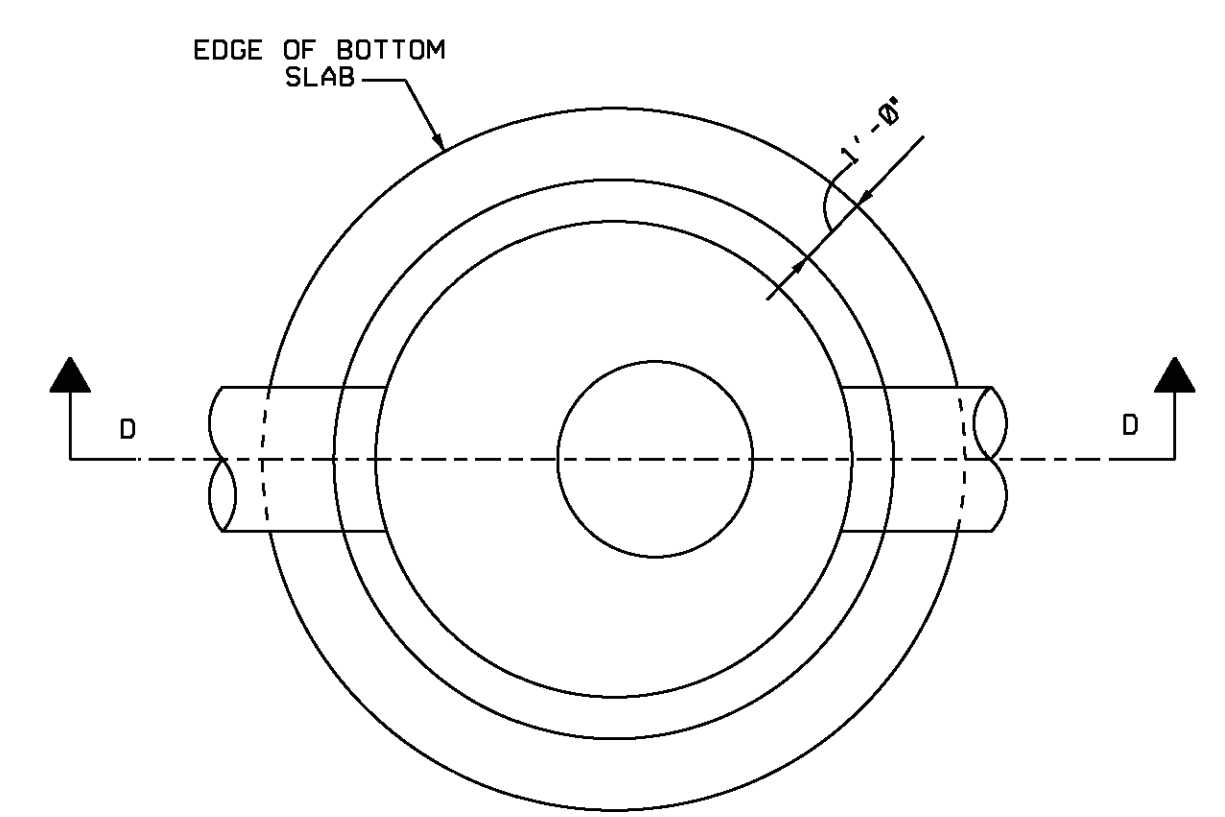
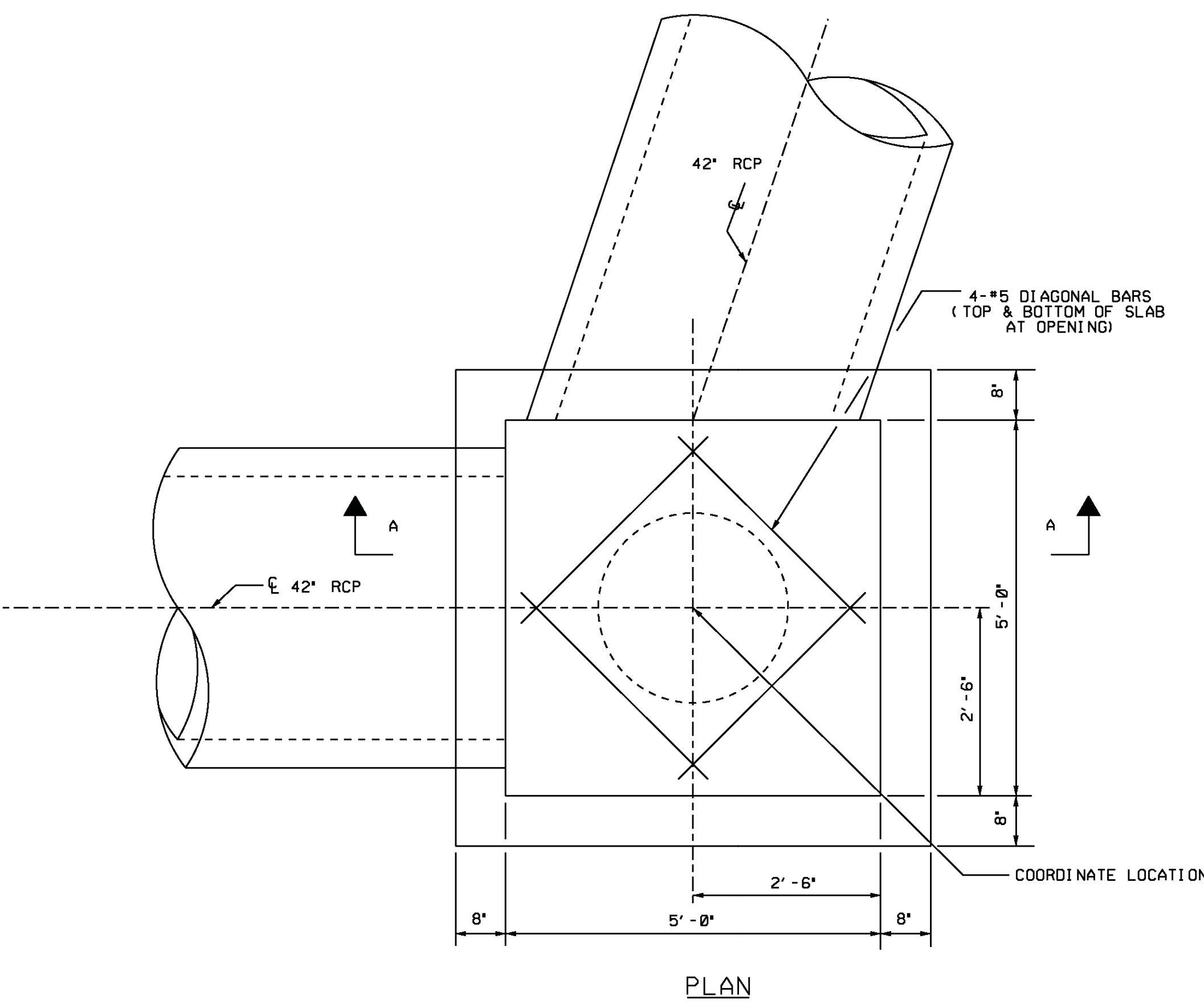
REVISION	DATE	BY	REASON	APPROVED

DESIGNED BY	REVISED FOR PWR 2003-0545	DATE	
DRAWN BY			

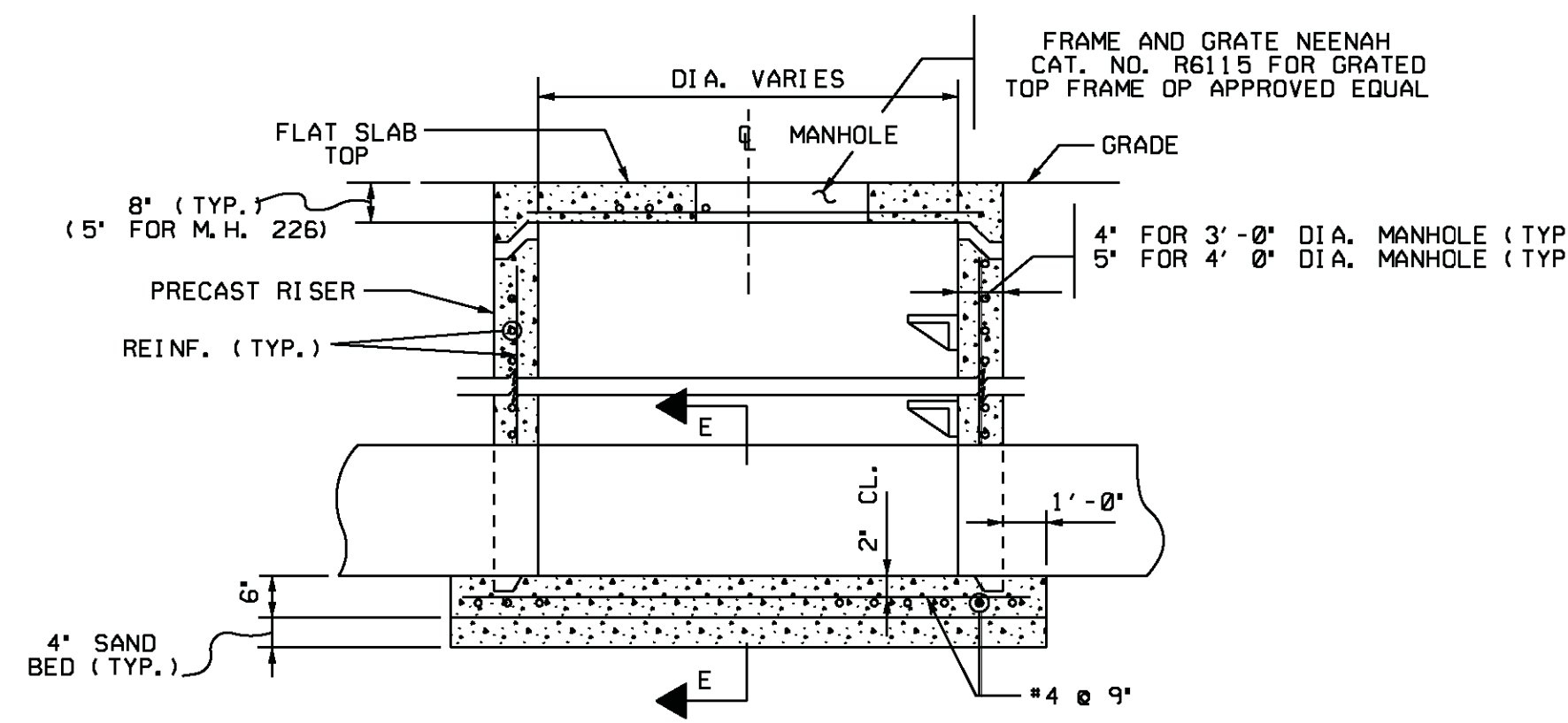
WOLF CREEK NUCLEAR OPERATING CORPORATION		ELECTRONIC APPROVAL	
WOLF CREEK GENERATING STATION			
MANHOLE AND PIPE DETAILS			
SCALE	AS SHOWN	DATE	26



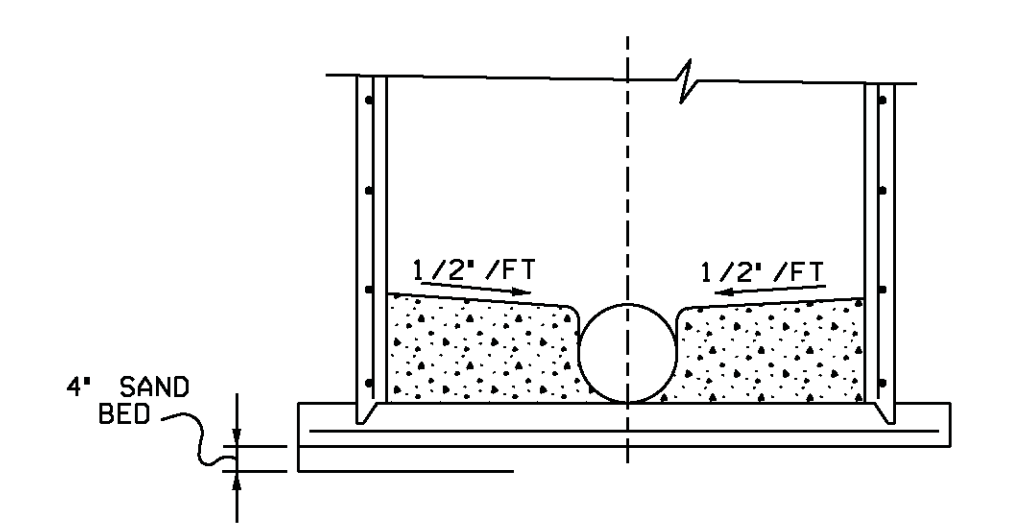
DETAIL 3
REINFORCED CONCRETE BOX
N.T.S.



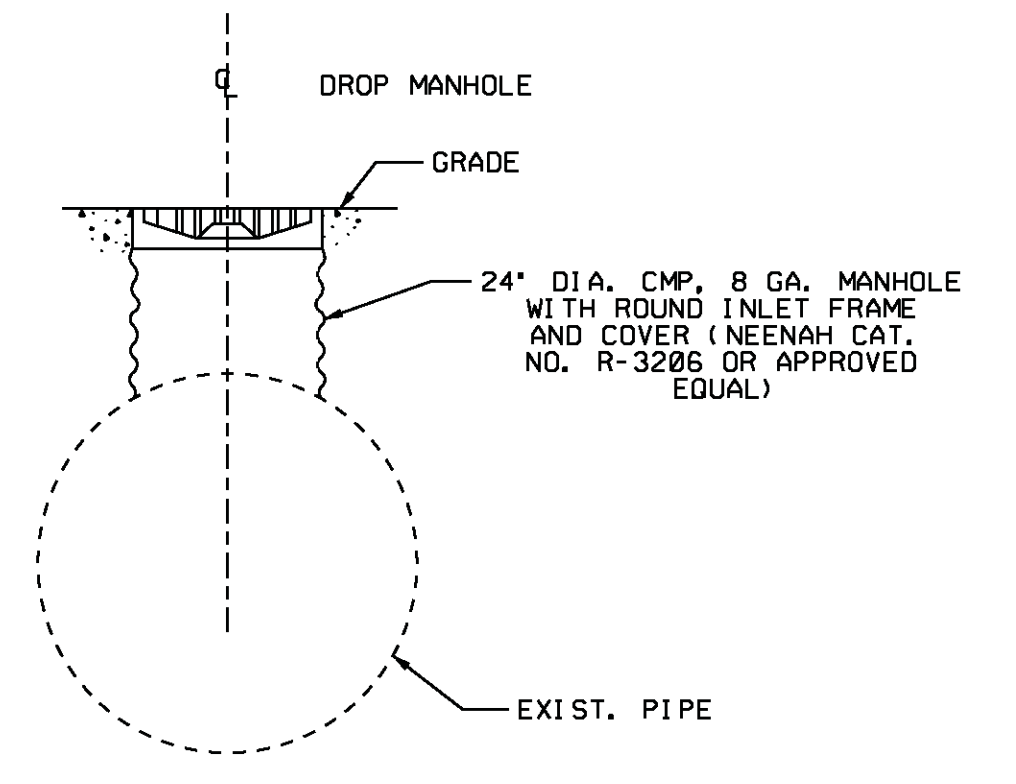
PLAN
N.T.S.



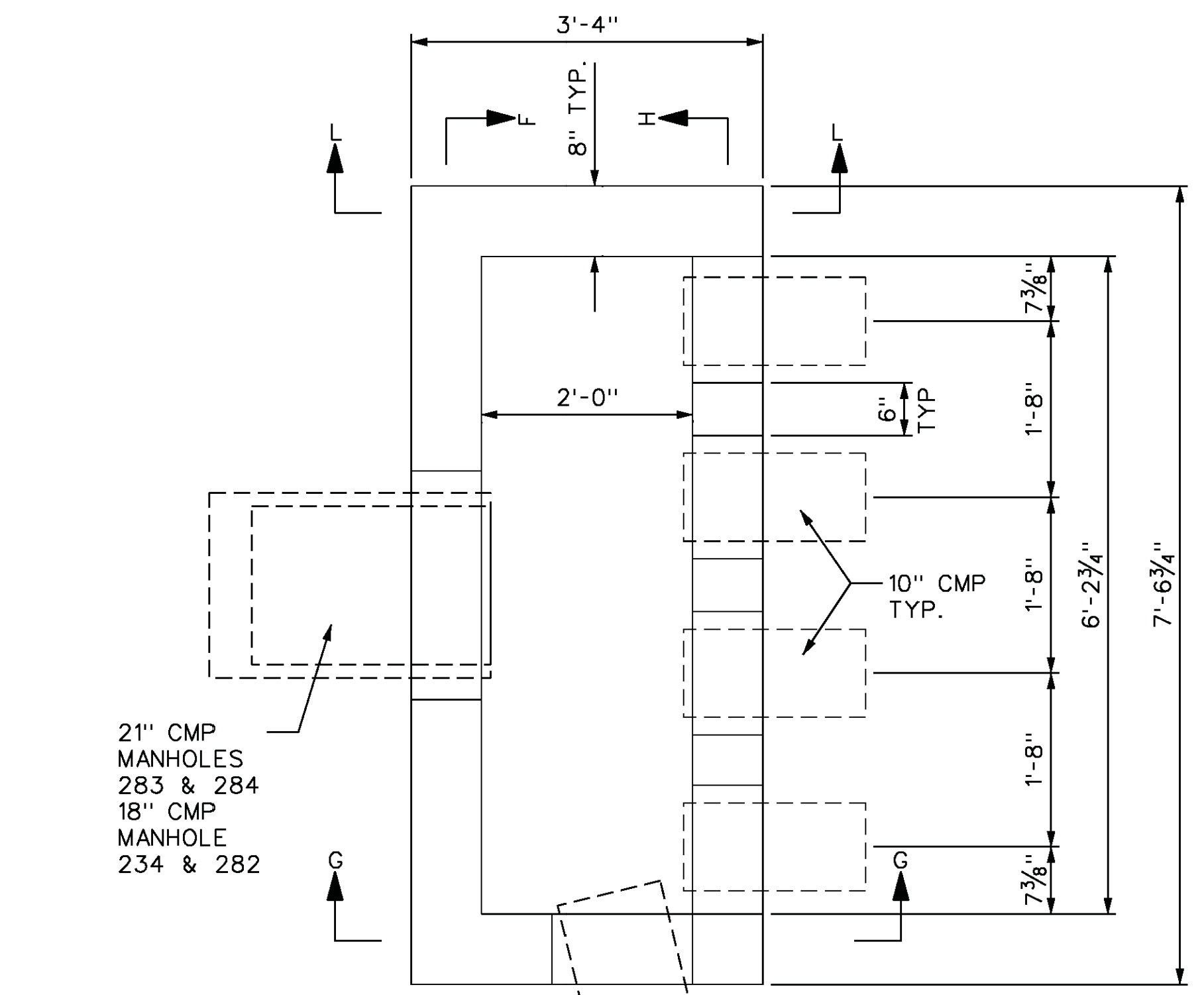
SECTION D
MANHOLE TYPE "A"
N.T.S.



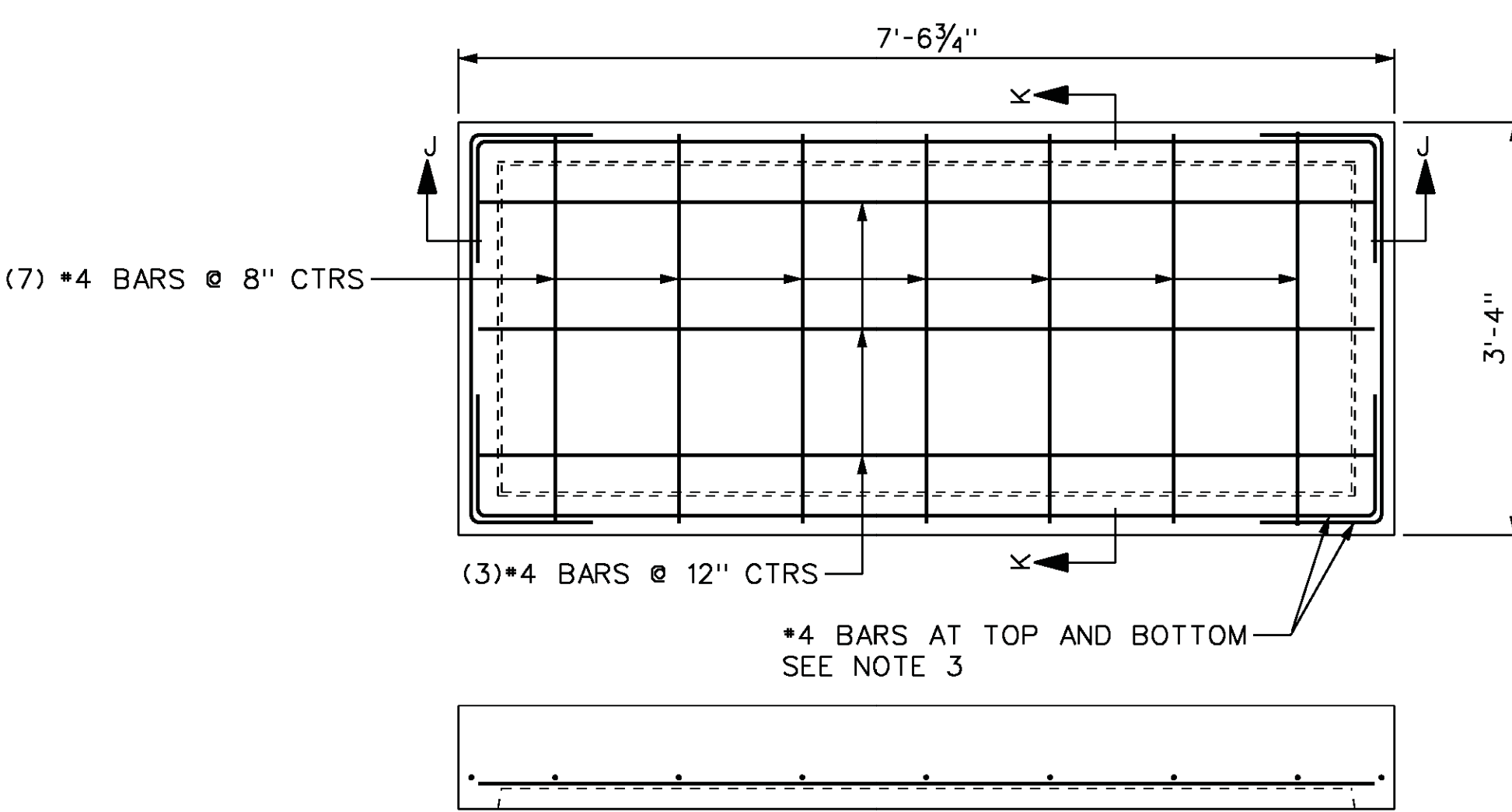
SECTION E
N.T.S.



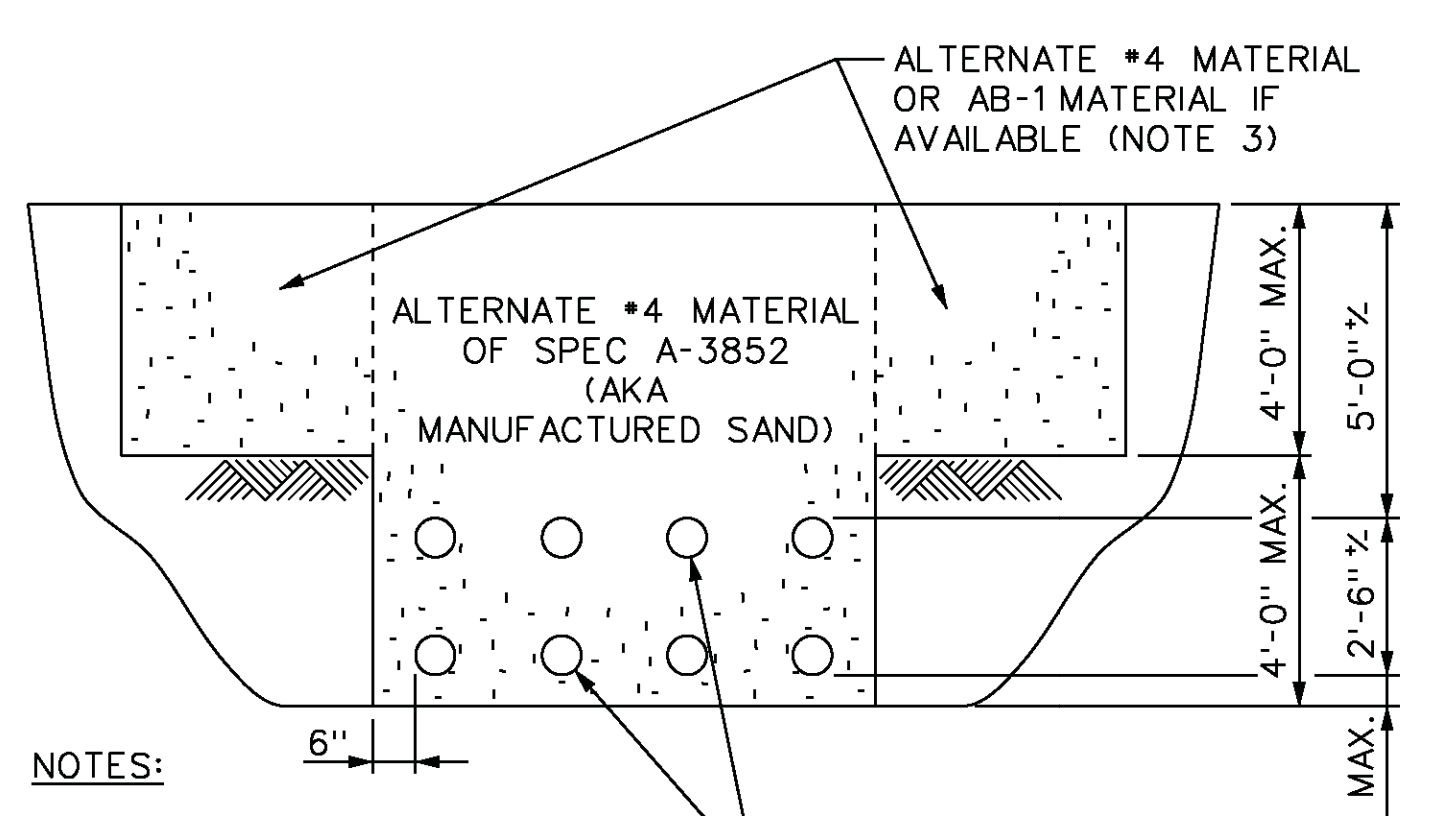
CMP DROP MANHOLE TYPE "F"
N.T.S.



SECURITY SITE
DRAINAGE MANHOLE PLAN
MANHOLES 234, 282, 283, AND 284

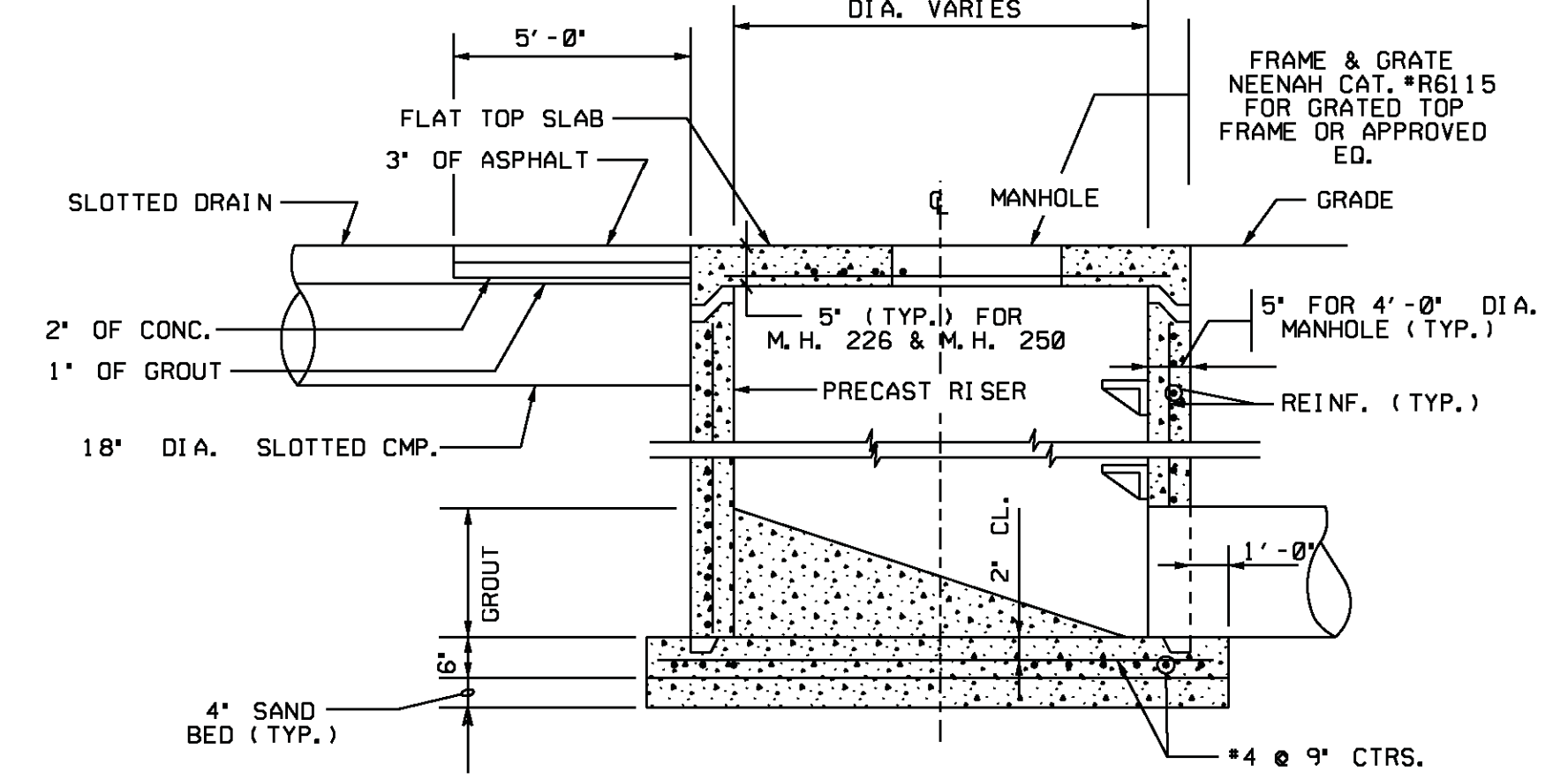


SECTION J-J
MANHOLE VAULT
LID REINFORCEMENT PLAN

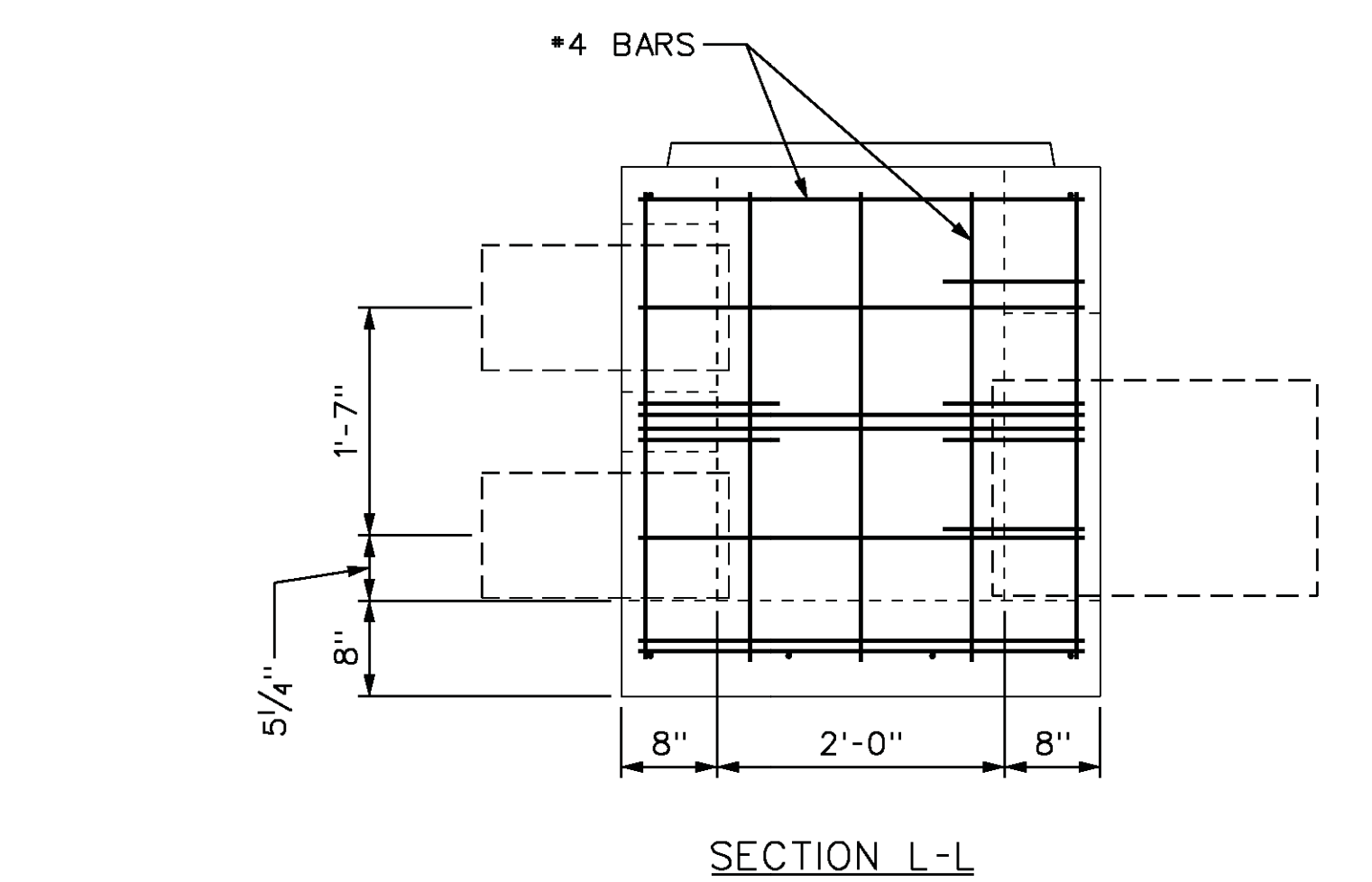


- NOTES:
- SPECIAL BACKFILL DUE TO SECURITY REQUIREMENTS.
 - BACKFILL WITH MATERIALS INDICATED AND IN ACCORDANCE WITH SPEC. A-3852.
 - CLEAN MATERIAL EXCAVATED FROM THE LOCATIONS MAY BE USED IN THESE AREAS ALSO.

BACKFILL FOR STORM DRAIN CONDUITS
MANHOLES 234, 282, 283, AND 284

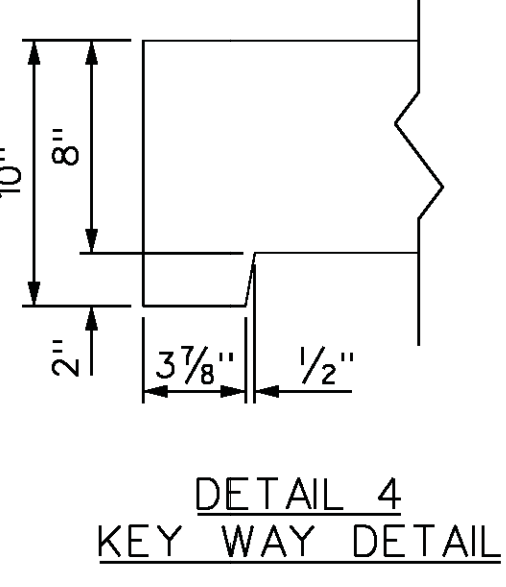


MANHOLE 250
N.T.S.

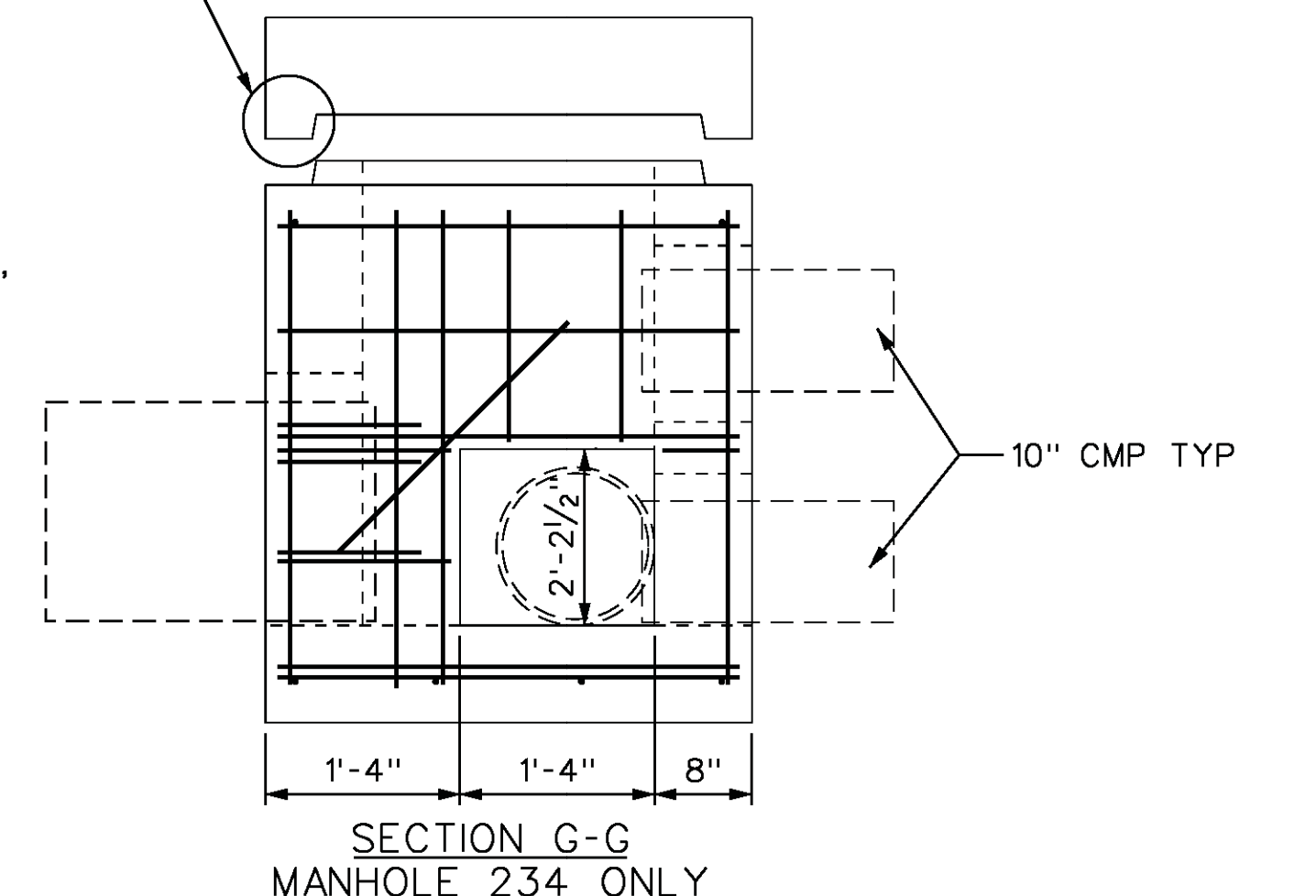


SECTION L-L

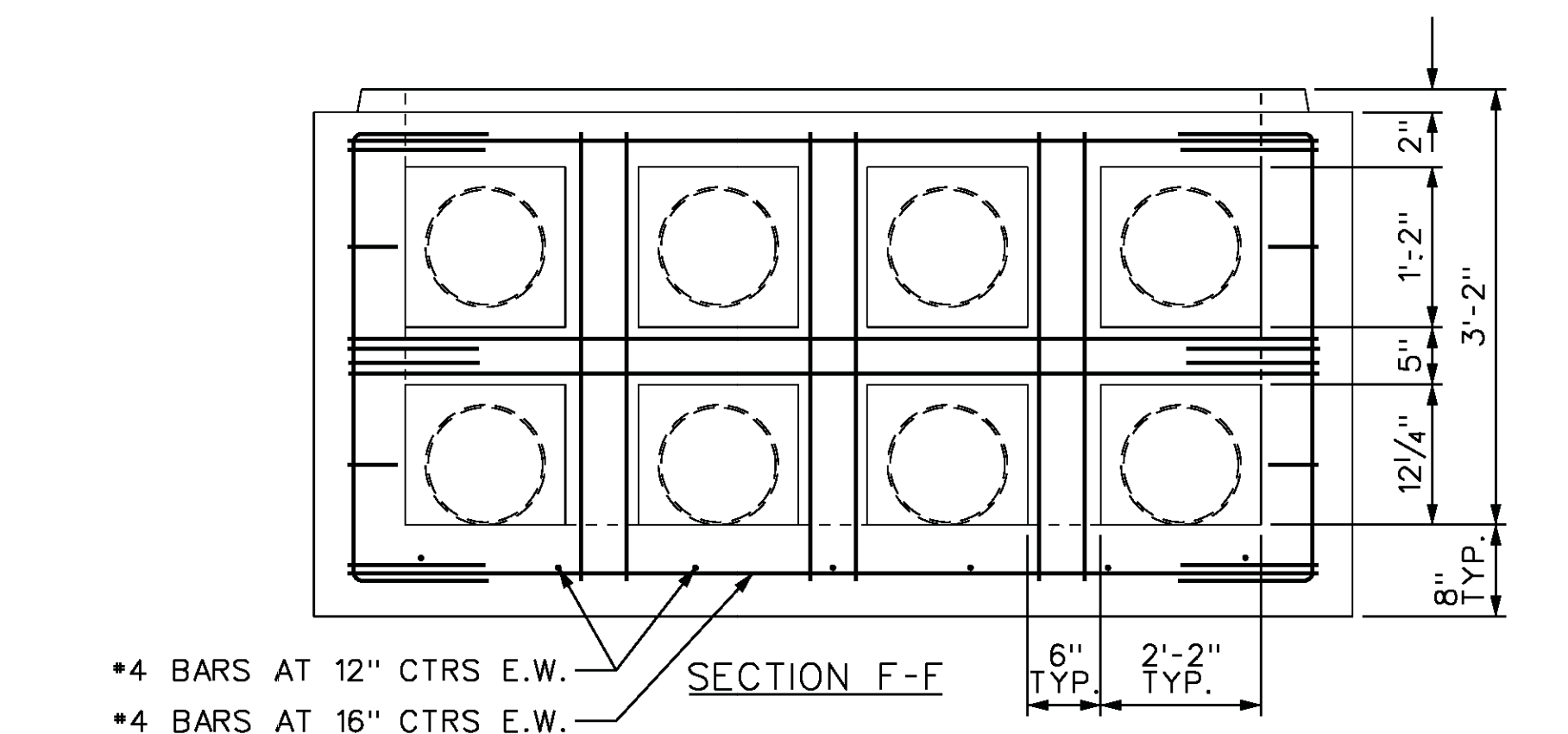
- GENERAL NOTES
- ALL REBAR SHALL BE #4 BARS
 - 5" CLEARANCE TYP.
 - ALL REBAR SHALL BE FIELD BEND
 - ALL REBAR SHALL BE GRADE 60
 - ALL CONCRETE SHALL BE 4000 PSI, 28 DAY COMPRESSIVE STRENGTH



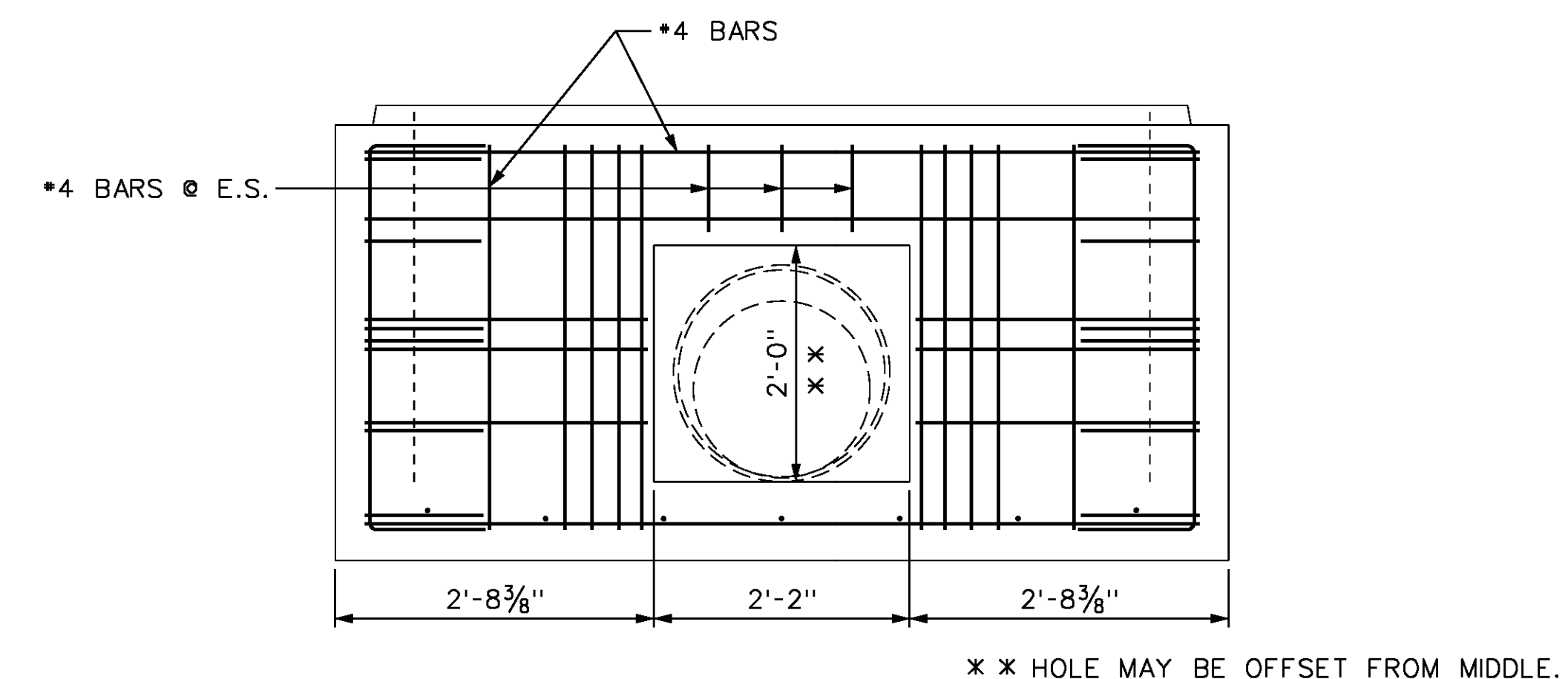
DETAIL 4
KEY WAY DETAIL



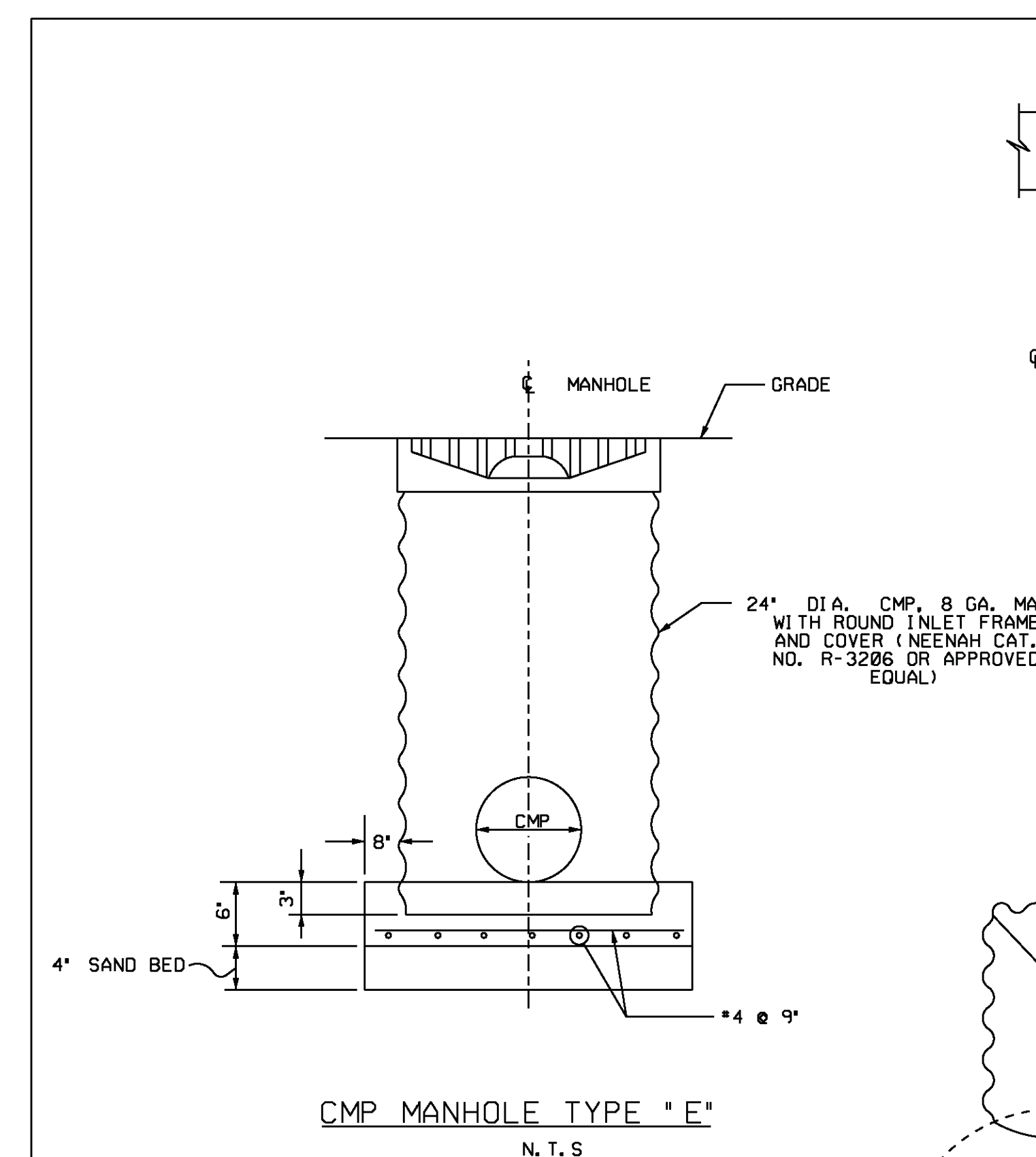
SECTION G-G
MANHOLE 234 ONLY



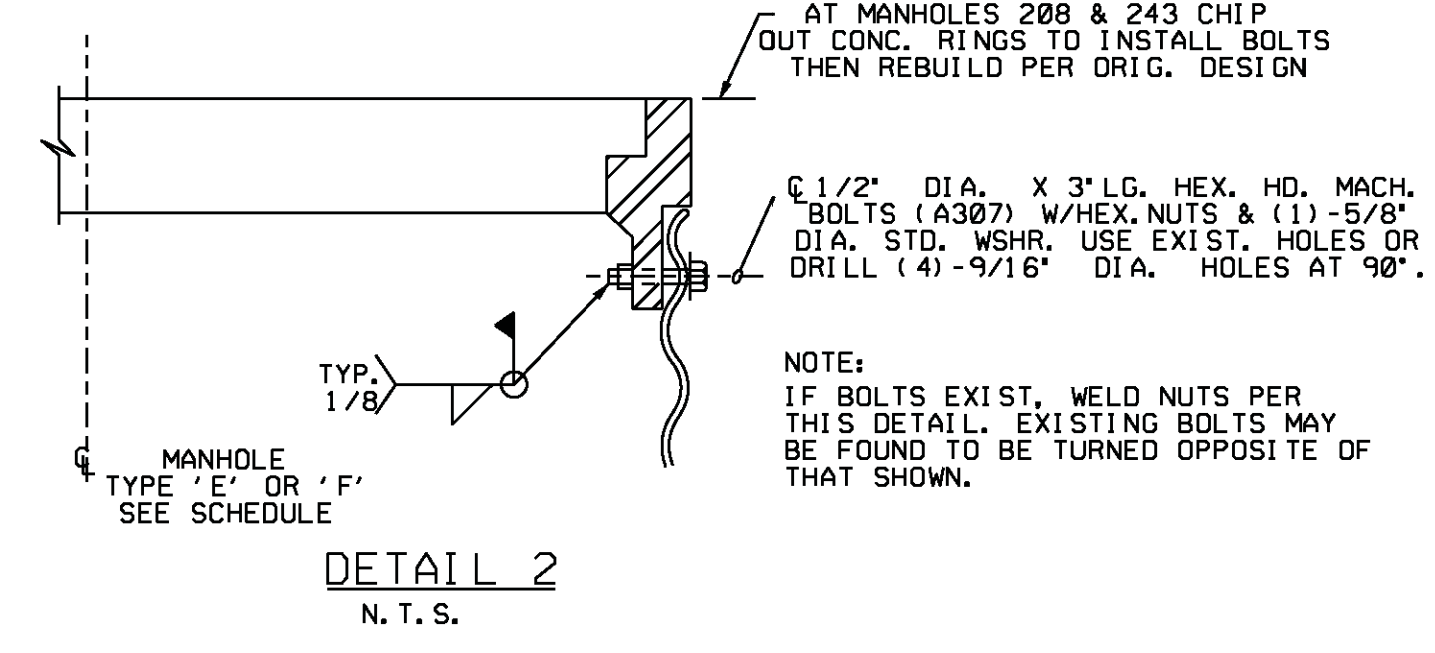
SECTION F-F



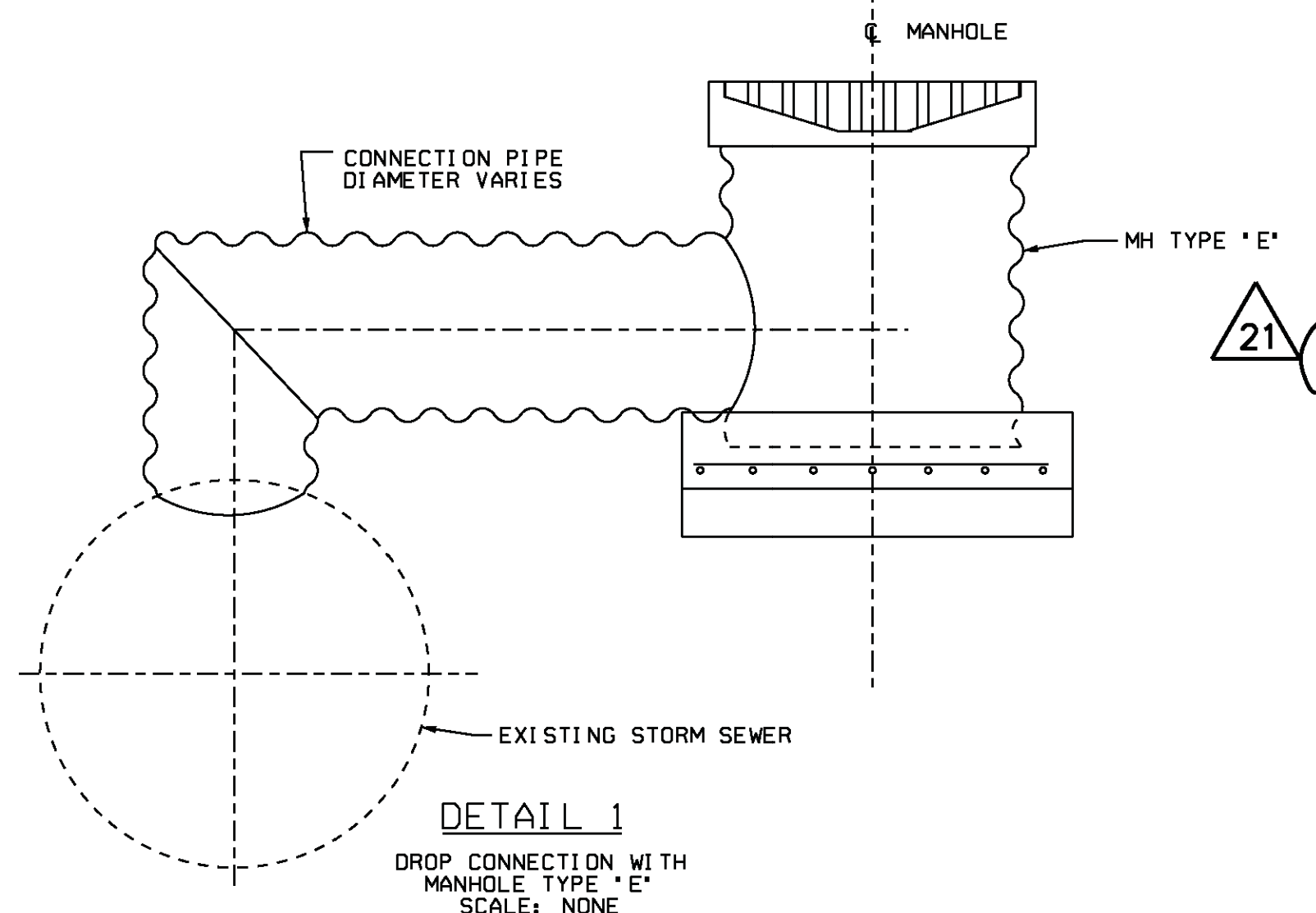
SECTION H-H



CMP MANHOLE TYPE "E"
N.T.S.



DETAIL 2
N.T.S.



DETAIL 1
DROP CONNECTION WITH
MANHOLE TYPE "E"
SCALE: NONE

- NOTES
- FOR GENERAL NOTES & LEGEND SEE DRAWING S-292
 - USE THIS DRAWING IN CONJUNCTION WITH DRAWING S-0296 SHEET 2.

REFERENCE DRAWINGS

S-0292	PLANT AREA ROADWAY, GRADING & DRAINAGE PLAN SHEET 1
S-0293	PLANT AREA ROADWAY, GRADING & DRAINAGE PLAN SHEET 2
S-0294	WAREHOUSE AREA ROADWAY, GRADING & DRAINAGE PLAN SH. 3
S-0297	PLANT AREA ROADWAY, GRADING & DRAINAGE PLAN SH. 4
S-0298	PLANT AREA ROADWAY, GRADING & DRAINAGE PLAN SH. 3
S-0299	DRAINAGE DETAILS & SECTIONS SH. 1 & 3
S-0186	DRAINAGE PLAN PLANT AREA
S-0189	MANHOLE, PIPE & CULVERT SCHEDULE
S-0191	MANHOLE & PIPE DETAILS
S-0296	MANHOLE & PIPE DETAILS SHEET 2.
Z017A-C-0004	DI-MENSION PLAN W/NO. PRE-SCREENING STRUCTURE Z017A.
Z017A-C-0005	GRADING PLAN W/NO. PRE-SCREENING STRUCTURE Z017A.

USAR FIG. 2. 4-3-06A

REVISED	INCORPORATED	CHANGE
ENG. DEC.	013233	FIG. NO.
ISSUED		
THIS ENG. SUPERSEDES		REV.
REVISION NOTES AS-BUILT INFORMATION		
WOLF CREEK		ELECTRONIC APPROVAL
NUCLEAR OPERATING CORPORATION		
MANHOLE AND PIPE DETAILS		
SCALE	DRAWING NUMBER	SHEET
NONE	S-0296	1 21
		34X4 E SIZE



DESIGN DOCUMENT
CHANGE NOTICE

INITIATING DOC.
NCR/EER/FCR (CWR) PER
NO. 4244-88-2

PMR NO. 02841
REV. 0

ASSIGNED DISCIPLINE: FACILITIES ENGINEERING	DDCN NO.	DOCUMENT NUMBER S-0297	REV. K	SEQ. NO. 01
---	----------	----------------------------------	------------------	-----------------------

OTHER DOCUMENTS AFFECTED BY THIS CHANGE:
S-0291

PAGE 1 OF 2

OTHER DDCN'S REQUIRED TO IMPLEMENT CHANGE:
DDCN S-0292-R-01

REASON FOR CHANGE:
AS BUILT INFORMATION

DESCRIPTION OF CHANGE: **SEE CLOUDED "AREA OF CHANGE" ON PAGE 2 OF THIS DDCN.**

REVIEWED WITHOUT COMMENTS

<u>W. Gary M...</u> FSE	<u>7-11-89</u> DATE	<u>Delbert S. Riebe</u> ESE	<u>7-11-89</u> DATE
<u>John A. Handberg</u> FE	<u>7-11-89</u> DATE	<u>Louis Schubert</u> OTHER	<u>7-11-89</u> DATE

RELEASE AS DDCN FOR REVISION

ASSIGNED ENG: <u>John A. Handberg</u>	DATE: <u>7-11-89</u>
CHECKED BY: <u>K. Parthasarathy</u>	DATE: <u>7-11-89</u>
APPROVED BY: <u>Mauna Singh</u>	DATE: <u>7-11-89</u>
DOCUMENT CONTROL RELEASE: <u>DC 31</u>	DATE: <u>8-18-89</u> MICROFILMED



DESIGN DOCUMENT
CHANGE NOTICE
CONTINUATION SHEET

INITIATING DOC.
NCR/EER/FCR/CWRYPER
NO. 4244-88-2

PMR NO. 02841
REV. 0

ASSIGNED DISCIPLINE:

FACILITIES ENGINEERING

DDCN NO.

DOCUMENT NUMBER

REV.

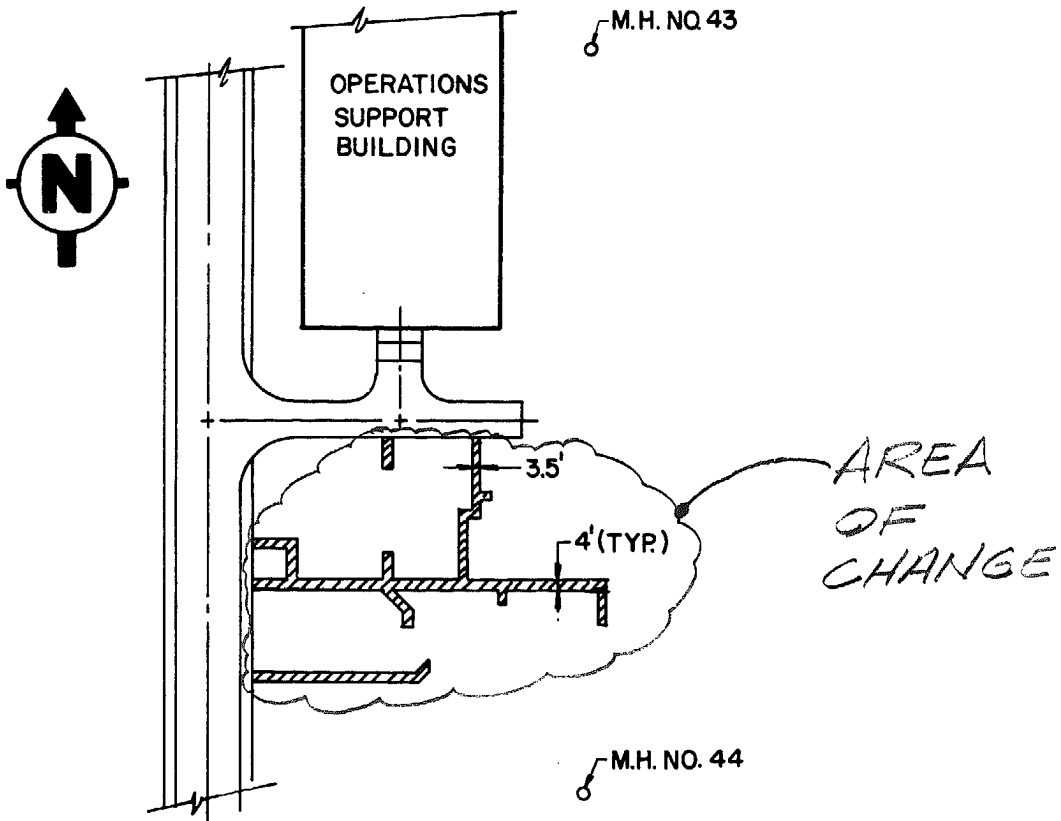
SEQ. NO.

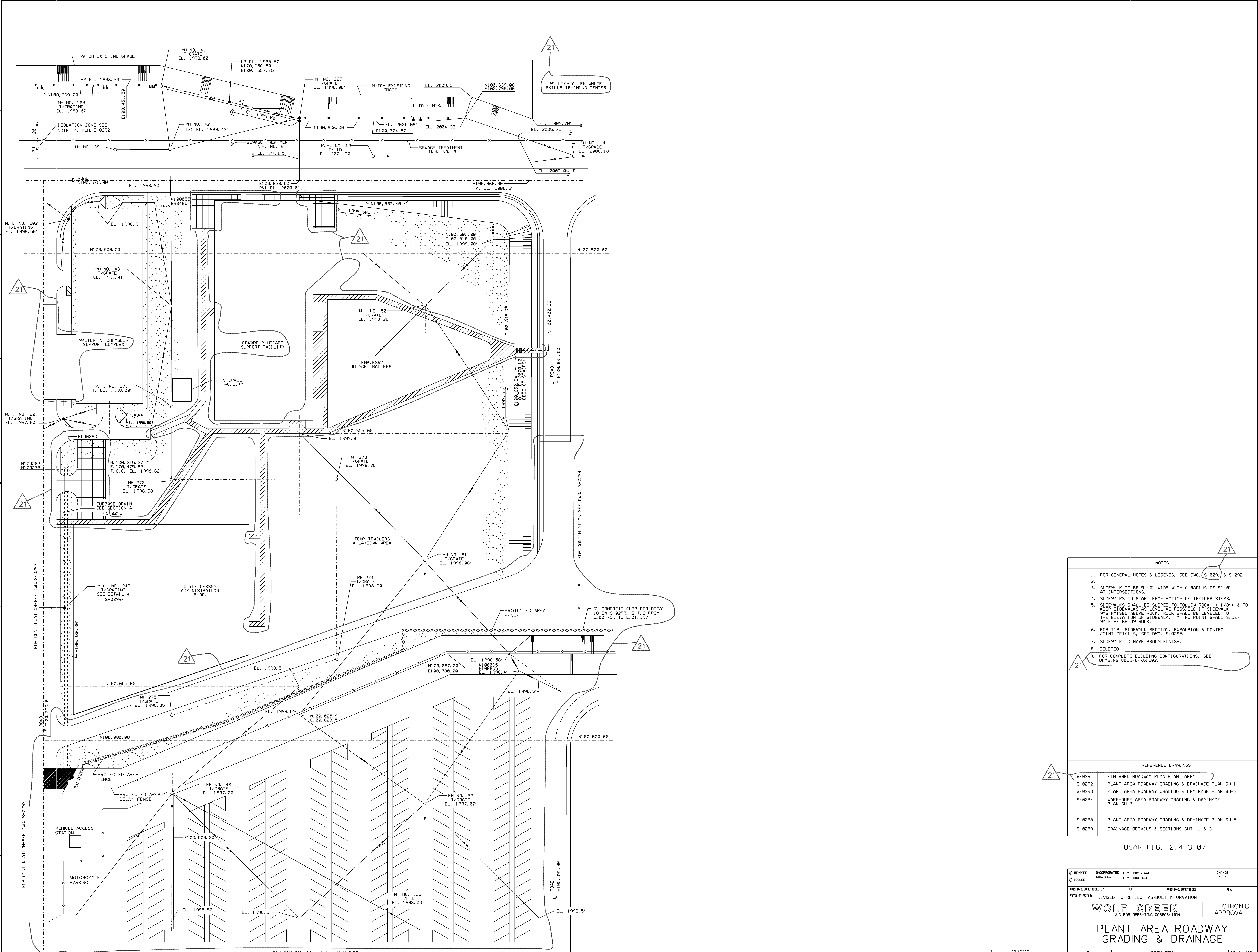
S-0297

K

01

PAGE 2 OF 2





- NOTES
1. FOR GENERAL NOTES & LEGENDS, SEE DWG. S-0291 & S-292
 - 2.
 3. SIDEWALK TO BE 5'-0" WIDE WITH A RADIUS OF 5'-0" AT INTERSECTIONS.
 4. SIDEWALKS TO START FROM BOTTOM OF TRAILER STEPS.
 5. SIDEWALKS SHALL BE SLOPED TO FOLLOW ROCK (1/8") & TO KEEP SIDEWALKS AS LEVEL AS POSSIBLE IF SIDEWALK HAS RAISED ABOVE ROCK, ROCK SHALL BE LEVELED TO THE ELEVATION OF SIDEWALK. AT NO POINT SHALL SIDEWALK BE BELOW ROCK.
 6. FOR TYP. SIDEWALK SECTION, EXPANSION & CONTROL JOINT DETAILS, SEE DWG. S-0298.
 7. SIDEWALK TO HAVE BROOM FINISH.
 8. DELETED
 9. FOR COMPLETE BUILDING CONFIGURATIONS, SEE DRAWING 8825-C-KGI 202.

REFERENCE DRAWINGS

S-0291	FINISHED ROADWAY PLAN PLANT AREA
S-0292	PLANT AREA ROADWAY GRADING & DRAINAGE PLAN SH-1
S-0293	PLANT AREA ROADWAY GRADING & DRAINAGE PLAN SH-2
S-0294	WAREHOUSE AREA ROADWAY GRADING & DRAINAGE PLAN SH-3
S-0298	PLANT AREA ROADWAY GRADING & DRAINAGE PLAN SH-5
S-0299	DRAINAGE DETAILS & SECTIONS SHIT. 1 & 3

USAR FIG. 2.4-3-07

REVISION	INCORPORATED	CR-00057844	CHANGE
ISSUED	CHG. DOC.	CR-00061144	PKG. NO.
THIS DWG. SUPERSEDES	REV.	THIS DWG. SUPERSEDES	REV.
REVISION NOTES	REVISED TO REFLECT AS-BUILT INFORMATION		
WOLF CREEK		ELECTRONIC APPROVAL	
NUCLEAR OPERATING CORPORATION			
PLANT AREA ROADWAY GRADING & DRAINAGE			
SCALE	DRAWING NUMBER	SHEET	REV
1"=30'-0"	S-0297	21	21

34X44 E SIZE

