



Commonwealth Edison
 One First National Plaza Chicago, Illinois
 Address Reply to: Post Office Box 767
 Chicago, Illinois 60690

Reg Record Log

July 21, 1975

Mr. D. L. Ziemann
 Operating Reactors - Branch 2
 Division of Reactor Licensing
 U.S. Nuclear Regulatory Commission
 Washington, D.C. 20555

**Proprietary Request
 withdrawn by GE
 He dtd. 5/18/77.*

Subject: Quad-Cities Station
 Special Report No. 15
 Attachment A, Proprietary
 NRC Dkts. 50-237, 50-249,
50-254, and 50-265

Dear Mr. Ziemann:

Attached are Figures Blh, Clh, Bli, and Cli, which are dated July 8, 1975. The figures show peak cladding temperature, heat transfer coefficient, vessel pressure, and water level for postulate break areas of 0.15 ft² and 0.5 ft². These figures provide information not previously included in Special Report No. 15, Attachment A, and should be added to the Attachment. With the addition of this information, Quad-Cities Special Report No. 15 remains applicable to Quad-Cities Units 1 and 2 and Dresden Units 2 and 3. The results of the emergency core cooling analysis are not changed by the attached information which only provides more details of the analysis. The enclosed figures contain information that the General Electric Company considers proprietary and exempt from public disclosure according with 10 CFR Part 2.790. /x

One (1) signed original and three (3) copies of this additional information are provided.

Very truly yours,

J. S. Abel

J. S. Abel
 Nuclear Licensing Administrator
 Boiling Water Reactors

Attachment

bcc: Mr. R. J. Silver

*ECLS
 W*

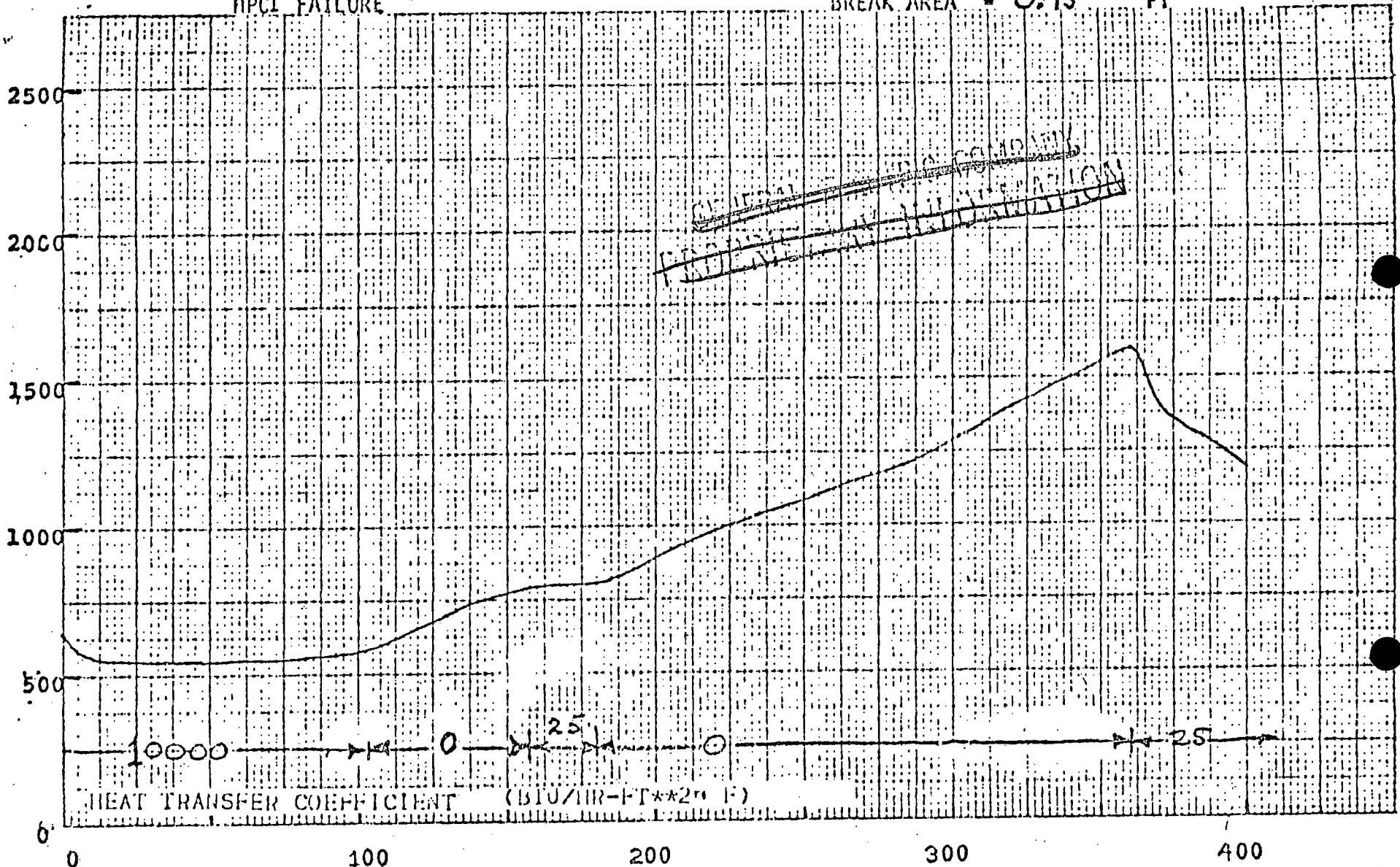
FIGURE 2 B1 IV

PEAK CLADDING TEMPERATURE FOLLOWING A SMALL BREAK OF THE RECIRCULATION LINE

HPCI FAILURE

BREAK AREA = 0.15 FT²

PEAK CLADDING TEMPERATURE OF

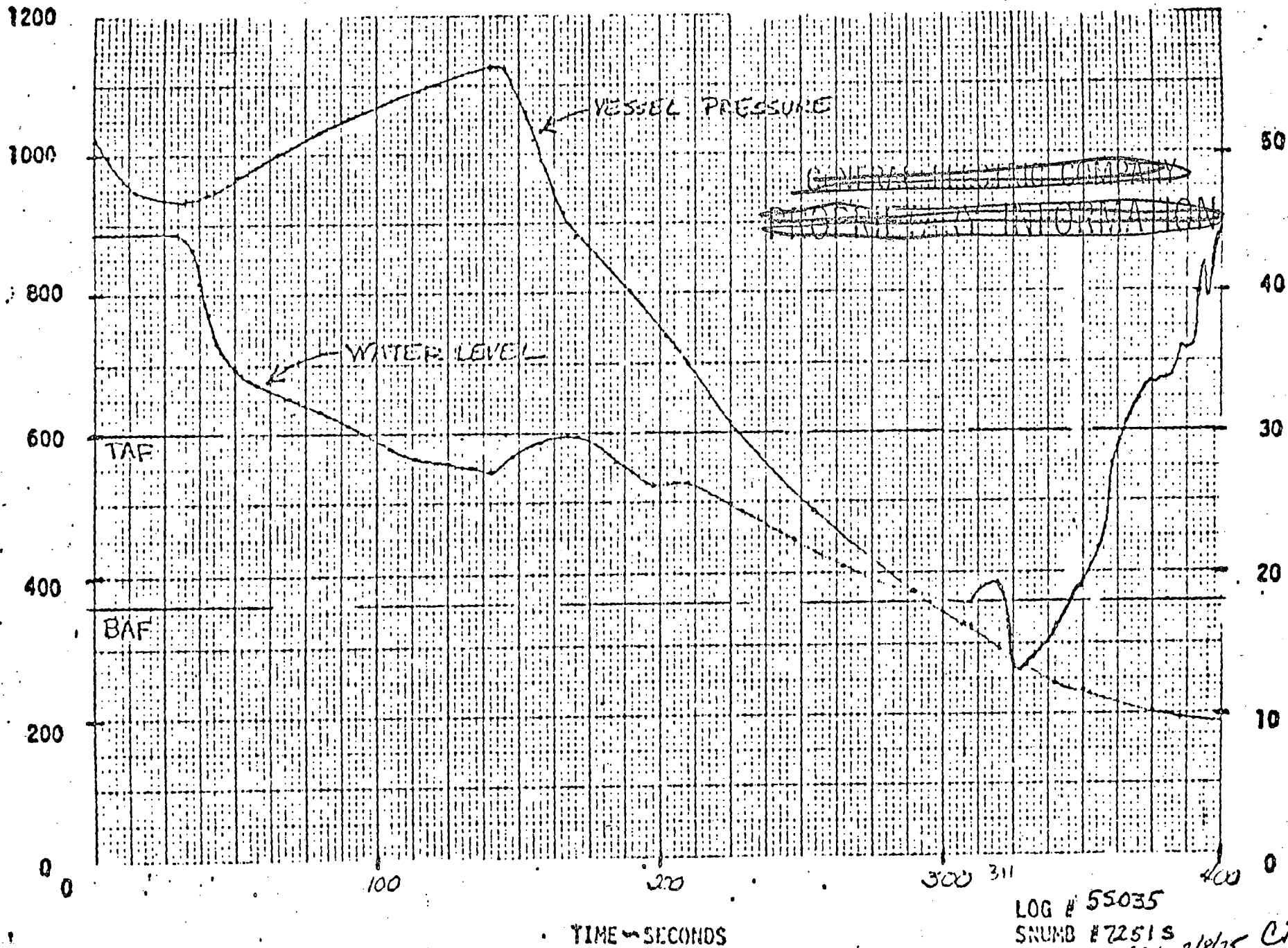


cnx: *8/18/15* log: 54028 - L
 app: *CHS* snumb: 75285
JDD

TIME ~ SECONDS

PLANT: QUAB CITIES

WATER LEVEL INSIDE THE SHROUD AND REACTOR VESSEL PRESSURE FOLLOWING A SMALL BREAK OF THE
 RECIRCULATION LINE - HPCI FAILURE. BREAK AREA ≈ 0.15 ft.2



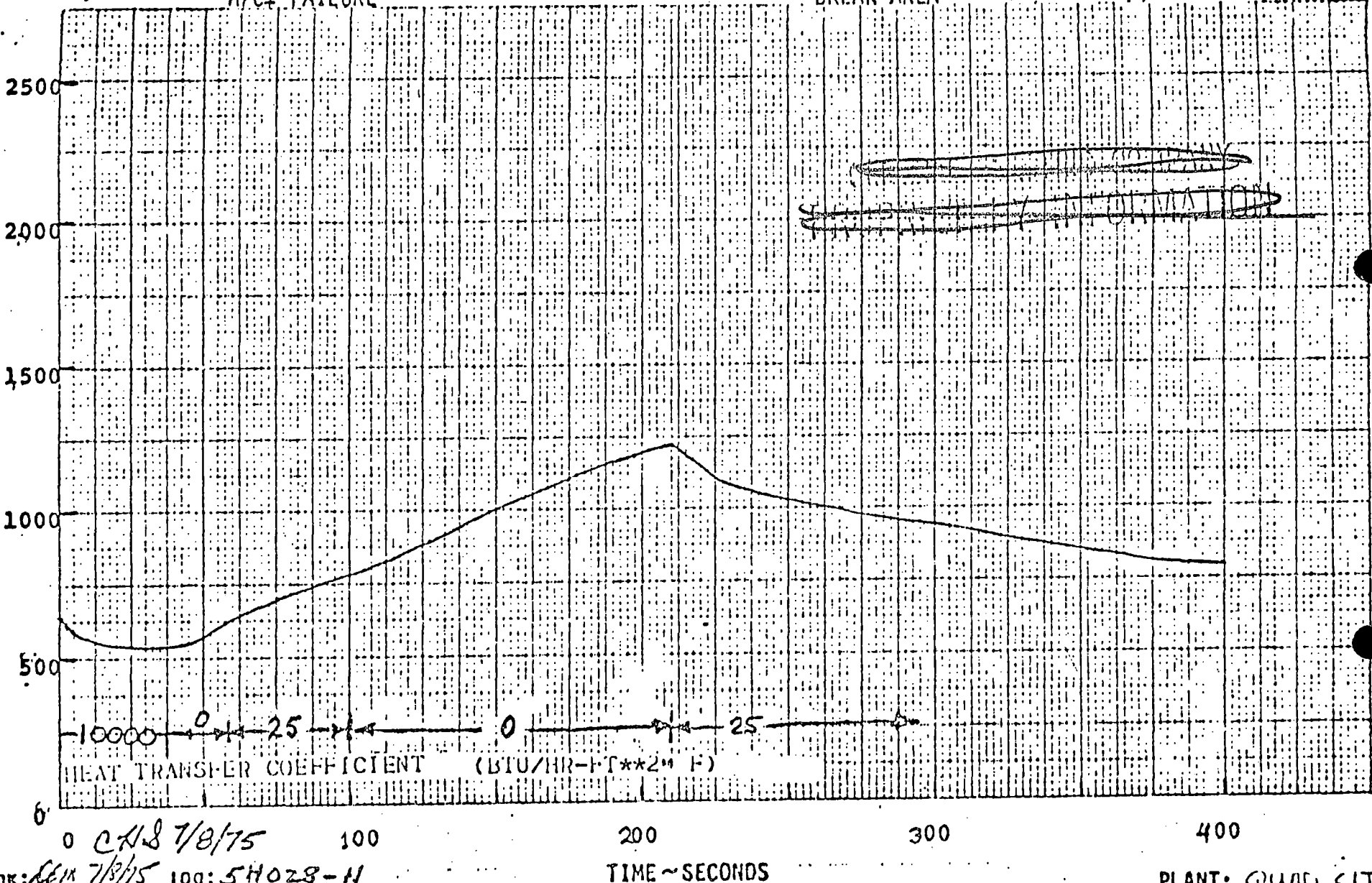
LOG # 55035
 SNUB # 7251 S
 ENGINEER *DCM* 7/9/75 *CN 8 7/8/*
 PLANT: QUAD CITIES 2

PEAK CLADDING TEMPERATURE FOLLOWING A SMALL BREAK OF THE RECIRCULATION LINE

HPCI FAILURE

BREAK AREA = 0.5 FT²

PEAK CLADDING TEMPERATURE °F

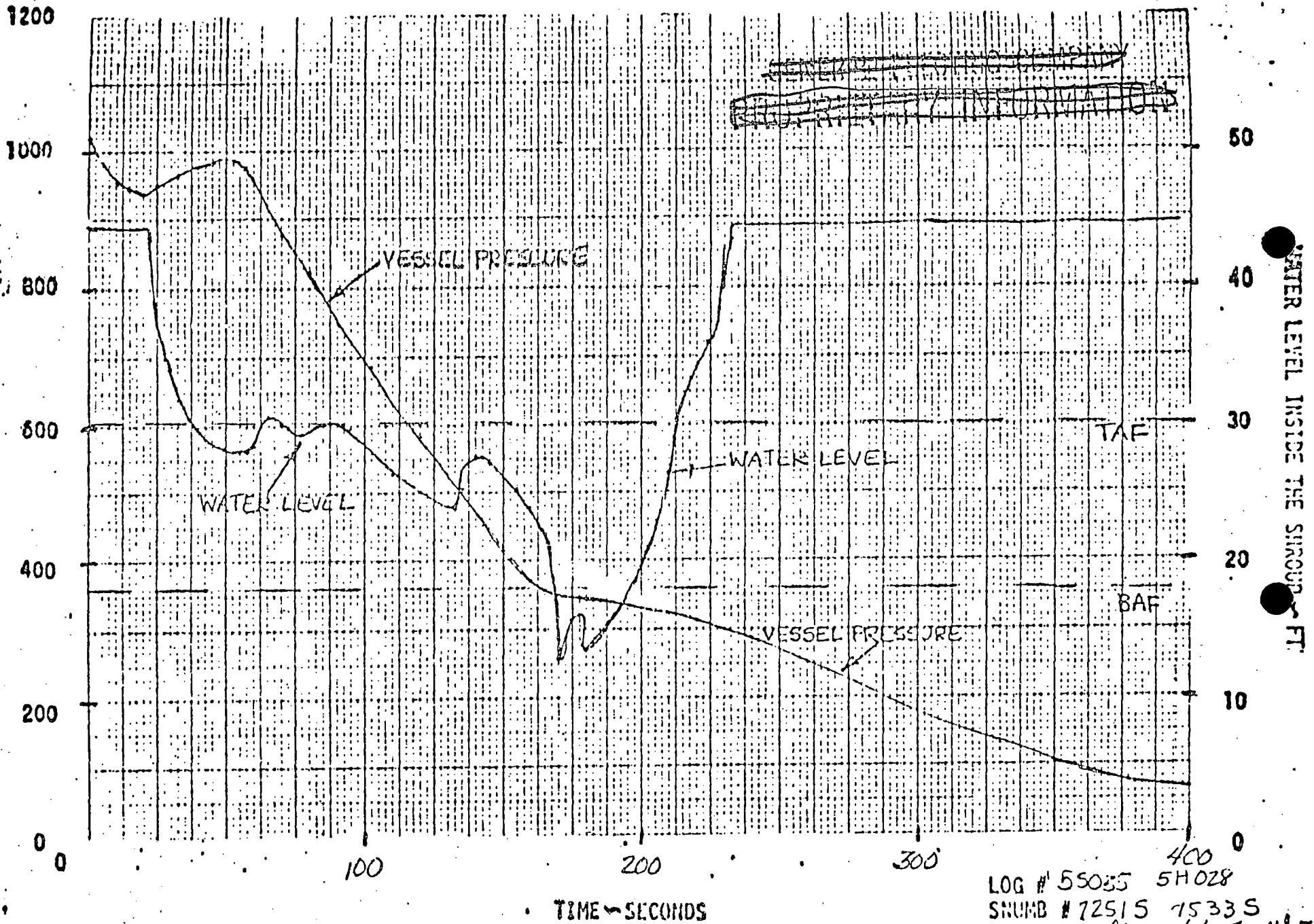


0 CAS 7/8/75 100
 CRK: REM 7/8/75 log: 5H028-N
 app: JDD snumb: 7533S

TIME ~ SECONDS

PLANT: QUAD CITIES

WATER LEVEL INSIDE THE SHROUD AND REACTOR VESSEL PRESSURE FOLLOWING A SMALL BREAK OF THE
 RECIRCULATION LINE - HPCI FAILURE. BREAK AREA = 0.5 ft.2



LOG # 55035 5H028
 SNUMB # 72515 7533 S
 ENGINEER *Dem* 7/8/75 *CHD 7/8/75*
 PLANT: QUID CITIES 2