

REGULATORY INFORMATION DISTRIBUTION SYSTEM (RIDS)

ACCESSION NBR: 8709280382 DOC. DATE: 87/09/23 NOTARIZED: NO DOCKET #  
 FACIL: 50-387 Susquehanna Steam Electric Station, Unit 1, Pennsylv 05000387  
 50-388 Susquehanna Steam Electric Station, Unit 2, Pennsylv 05000388  
 AUTH. NAME AUTHOR AFFILIATION  
 KEISER, H. W. Pennsylvania Power & Light Co.  
 RECIP. NAME RECIPIENT AFFILIATION  
 THADANI, M. C. Project Directorate I-2

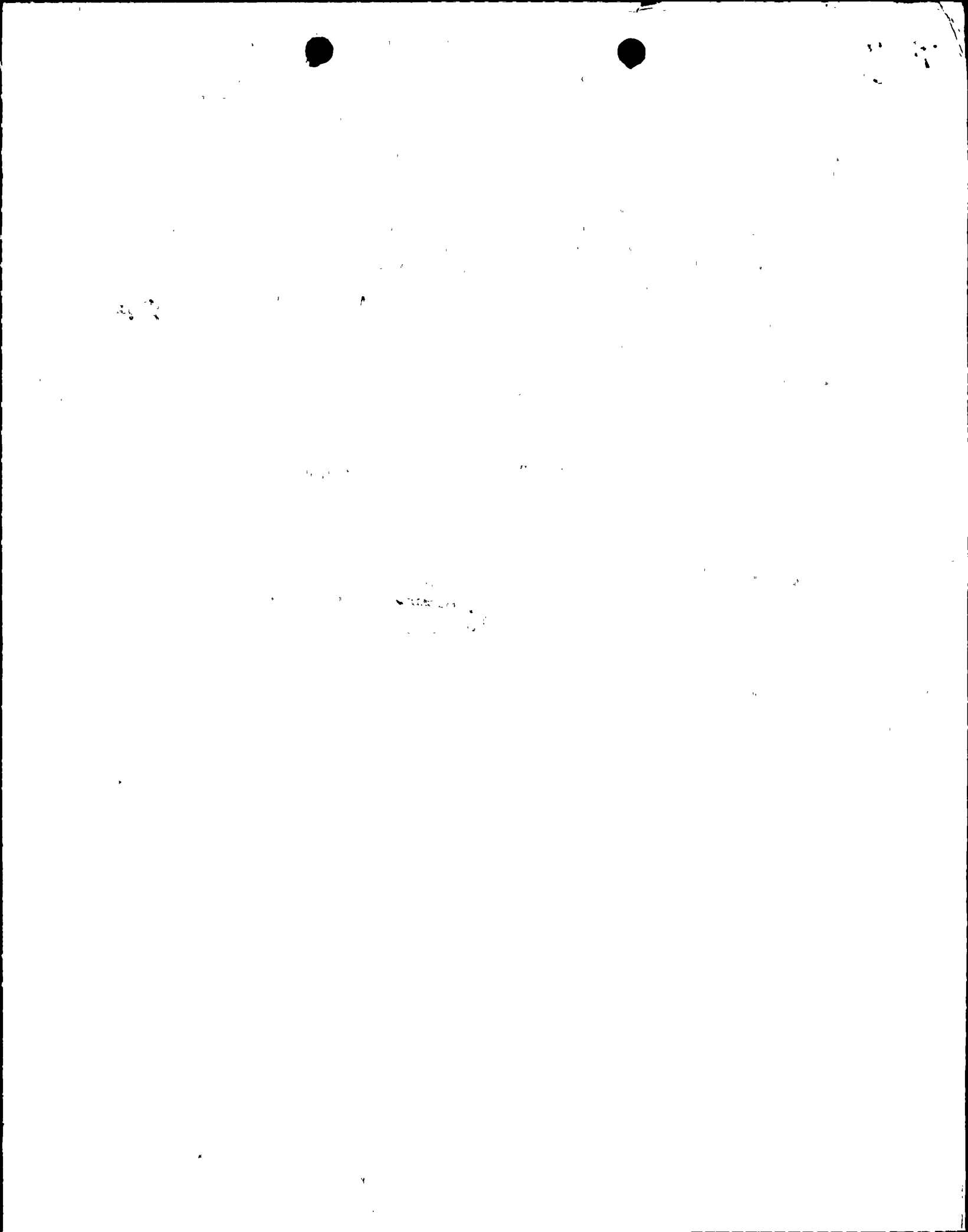
SUBJECT: Forwards NRR SIMS printouts for facility which have been marked up to show completion dates where known, in response to 870820 ltr. More descriptive identification for each item needed to more adequately respond to request.

DISTRIBUTION CODE: A001D COPIES RECEIVED: LTR 1 ENCL 1 SIZE: 25  
 TITLE: OR Submittal: General Distribution

NOTES: 1cy NMSS/FCAF/PM. LPDR 2cys Transcripts. 05000387  
 1cy NMSS/FCAF/PM. LPDR 2cys Transcripts. 05000388

	RECIPIENT ID CODE/NAME	COPIES LTTR ENCL	RECIPIENT ID CODE/NAME	COPIES LTTR ENCL
	PD1-2 LA THADANI, M	1 0 1 1	PD1-2 PD	5 5
INTERNAL:	ACRS	6 6	ARM/DAF/LFMB	1 0
	NRR/DEST/ADS	1 1	NRR/DEST/CEB	1 1
	NRR/DEST/MTB	1 1	NRR/DEST/RSB	1 1
	NRR/DOEA/TSB	1 1	NRR/EMAS/ILRB	1 1
	DGC/HDS2	1 0	<u>REG FILE</u> 01	1 1
	RES/DE/EIB	1 1		
EXTERNAL:	EG&G BRUSKE, S	1 1	LPDR	2 2
	NRC PDR	1 1	NSIC	1 1
NOTES:		3 3		

TOTAL NUMBER OF COPIES REQUIRED: LTTR 31 ENCL 28





Pennsylvania Power & Light Company

Two North Ninth Street • Allentown, PA 18101 • 215/770-5151

USNRC-DS

1987 SEP 25 A 9:47

Harold W. Keiser  
Vice President-Nuclear Operations  
215/770-7502

SEP 23 1987

Mr. Mohan C. Thadani, Project Manager  
Project Directorate I-2  
Division of Reactor Projects I/II  
U.S. Nuclear Regulatory Commission  
Washington, D.C. 20555

SUSQUEHANNA STEAM ELECTRIC STATION  
NRC SAFETY ISSUES MANAGEMENT SYSTEM  
PLA- 2921 FILE R41-2

Docket Nos. 50-387  
and 50-388

Dear Mr. Thadani:

In response to your letter of August 20, 1987, attached are copies of NRRs SIMS printouts for Susquehanna 1 and 2 which have been marked up to show completion dates where known. For a great many of the items on the lists, the short issue description would not allow definitive identification of the issue. Therefore, we have left these blank for now.

To adequately respond to your request, we will need more descriptive identification for each item. I recommend a meeting either at your offices or at ours where we can resolve these questions. Mr. Coddington will be contacting you shortly to arrange the meeting.

Very truly yours,

H. W. Keiser  
Vice President-Nuclear Operations

Attachments

cc: NRC Document Control Desk (original)  
NRC Region I  
Mr. L. R. Plisco - NRC Resident Inspector  
Mr. M. C. Thadani - NRC Project Manager

8709280382 870923  
PDR ADOCK 05000387  
P PDR

ADD  
11

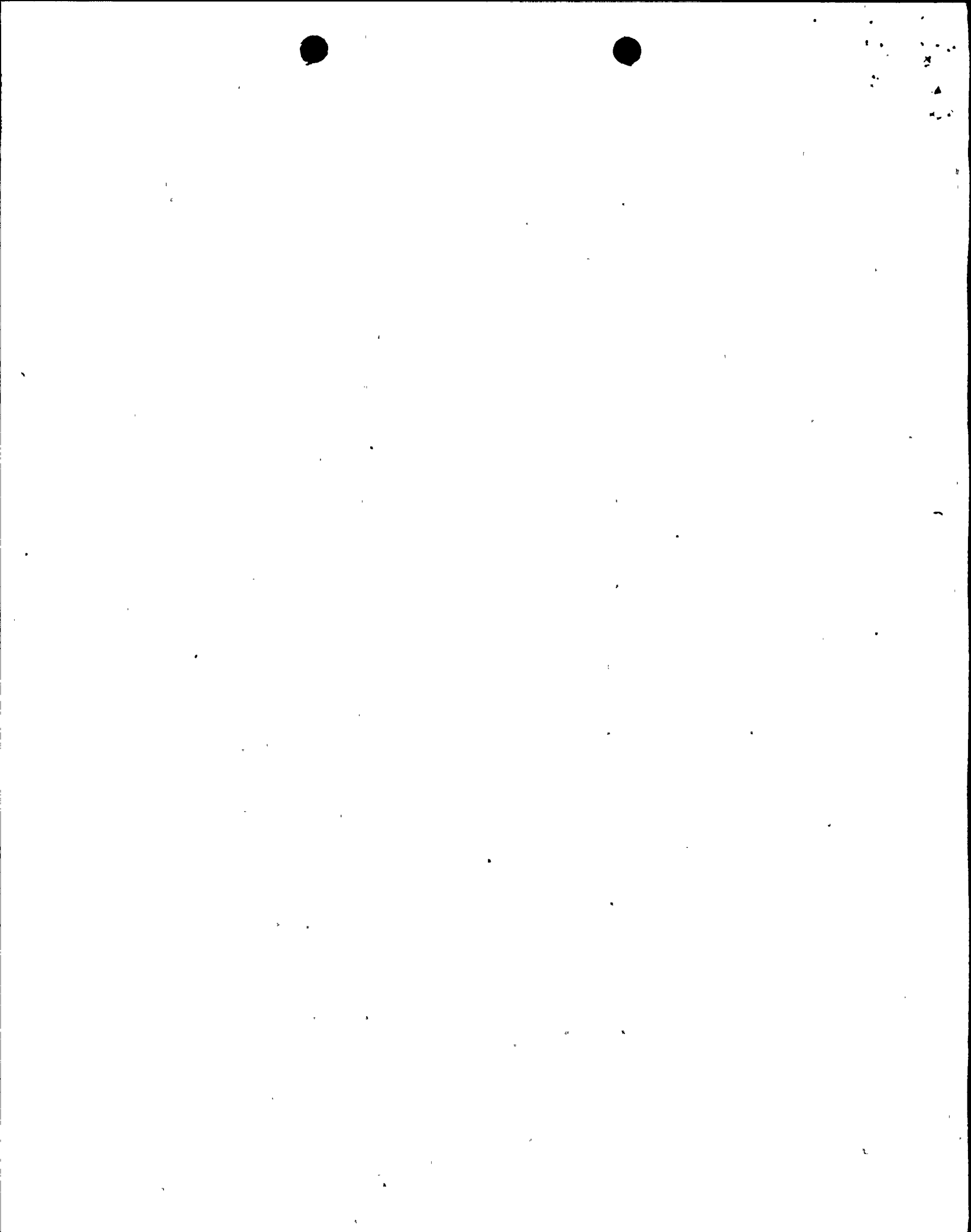
22-01111  
FBI A 22 002 161

R-1216320-SPC

08/17/87

S A F E T Y   I S S U E S   M A N A G E M E N T   S Y S T E M  
P L A N T   D A T A

PLANT	DOCKET	TYPE	NSSS SUPPLIER	THERMAL CAPACITY	LICENSEE			STATE	REGION	OL ISSUE	OL EXPIRATION
SUSQUEHANNA 1	05000387	BWR	GE	3293 MWT	PENNSYLVANIA POWER & LIGHT			PA	1	07/82C	07/22
APPLICABLE ISSUES				IMPO. INIT.	IMPO. COMP.	IMPL COMP	VERIFY COMPLET	ISSUE PRIORITY	MPA VER PRIORITY	DOCKET PRIORITY	VERIFY PRIORITY
M65353	SUSQUEHANNA 1 - INADEQUATE TORQUE ON HPC			05/87C	05/87C					H	
50	REACTOR VESSEL LEVEL INSTRUMENTATION IN			N/A	N/A	N/A	N/A				
67.3.3	A-17 IMPROVED ACCIDENT MONITORING			04/83C	02/85C	00/87			H		
75 (B-76)	B-76 ITEM 1.1 - POST TRIP REVIEW; PROGRAM DES			11/83C	05/85C	00/83C					N
75 (B-77)	B-77 ITEM 2.1 - EQUIPMENT CLASSIFICATION & VE			11/83C		03/84C					N
75 (B-78)	B-78 ITEMS 3.1.1 & 3.1.2 -POST MAINTENANCE TE			11/83C	06/86C	00/83C					N
75 3-79)	B-79 ITEM 3.1.3 - POST MAINTENANCE TESTING -			11/83C	11/85C	00/83C					N
75 B-85)	B-85 SALEM ATWS 1.2 DATA CAPABILITY			11/84C	06/85C	03/84C					N
75 (B-86)	B-86 SALEM ATWS 2.2 S-R COMPONENTS			11/84C		03/84C					N
75 (B-87)	B-87 SALEM ATWS 3.2.1 & 3 2.2 S-R COMPONENTS			11/84C	06/86C	00/83C					N
75 (B-88)	B-88 SALEM ATWS 3.2.3 T.S S-R COMPONENTS			11/84C	11/85C	00/83C					N
75 (B-92)	B-92 SALEM ATWS 4.5.1 DIVERSE TRIP FEATURES			11/84C	06/86C	03/84C					N
75 (B-93)	B-93 SALEM ATWS 4.5.2 & 4.5.3 TEST ALTERNATIV			11/84C		04/85C					N
A-36 (C-10)	C-10 CONTROL OF HEAVY LOADS OVER SPENT FUEL P			04/83C	07/83C	00/82C			M		
A-36 (C-15)	C-15 CONTROL OF HEAVY LOADS - PHASE II (FOLLO			05/83C	01/86C	00/82C					
B-56	D-19 DIESEL GENERATOR RELIABILITY			09/84C	09/85C	09/84C				H	N
HF 1.1	SHIFT STAFFING			10/83	01/84C	10/85C				H	
I.A.1.1.1	SHIFT TECHNICAL ADVISOR - ON DUTY			C	C	C	05/82C				
I.A.1.1.4	SHIFT TECHNICAL ADVISOR - DESCRIBE LONG			C	C	C	05/82C				
				C	C	C	05/82C				



R-1216320-SPC

08/17/87

S A F E T Y   I S S U E S   M A N A G E M E N T   S Y S T E M  
P L A N T   D A T A

PLANT	DOCKET	TYPE	NSSS SUPPLIER	THERMAL CAPACITY	LICENSEE			STATE	REGION	OL ISSUE	OL EXPIRATION
SUSQUEHANNA 1	05000387	BWR	GE	3293 MWT	PENNSYLVANIA POWER & LIGHT			PA	1	07/82C	07/22
APPLICABLE ISSUES				IMPO. INIT.	IMPO. COMP.	IMPL. COMP.	VERIFY COMPLET	ISSUE PRIORITY	MPA VER PRIORITY	DOCKET PRIORITY	VERIFY PRIORITY
I.A.1.2	SHIFT SUPERVISOR RESPONSIBILITIES			C	C	C	08/82C				
I.A.1.3.1	F-02 SHIFT MANNING - LIMIT OVERTIME			C	C	C	08/82C				
I.A.1.3.2	F-02 SHIFT MANNING - MIN SHIFT CREW			C	C	C	08/82C				
I.A.1.4	LONG-TERM UPGRADE OF OPERATIONS PERSONNE				04/83	04/83					M
I.A.2.1.1	IMMEDIATE UPGRADING OF RO & SRO TRAINING			C			N/A				
I.A.2.1.4	F-03 IMMEDIATE UPGRADING OF RO & SRO TRAINING			C	C	C	05/82C				
I.A.2.3	ADMINISTRATION OF TRAINING PROGRAMS			C	C	C	05/82C				
I.A.2.7	ACCREDITATION OF TRAINING INSTITUTIONS			03/85	12/86	03/85	03/87				M
I.A.3.1.3.A	REVISE SCOPE & CRIT. FOR LIC. EXAMS - SI			C			N/A				
I.A.3.1.3.B	REVISE SCOPE & CRIT. FOR LIC. EXAMS - SI			C			N/A				
I.B.1.2	EVALUATION OF ORGANIZATION & MANAGEMENT			C	C	C	08/82C				
I.C.1.1	SHORT-TERM ACCIDENT & PROCEDURES REVIEW			C	C	C	08/82C				
I.C.1.2.B	F-05 SHORT-TERM ACCID. & PROCEDURES REV. - IN 07/84C						09/85C				
I.C.1.3.B	F-05 SHORT-TERM ACCID. & PROCEDURES REV. - TR 07/84C						09/85C				
I.C.2	SHIFT & RELIEF TURNOVER PROCEDURES			C	C	C	08/82C				
I.C.3	SHIFT-SUPERVISOR RESPONSIBILITY			C	C	C	08/82C				
I.C.4	CONTROL-ROOM ACCESS			C	C	C	05/82C				
I.C.5	F-06 FEEDBACK OF OPERATING EXPERIENCE			C	C	C	09/82C				
I.C.6	F-07 VERIFY CORRECT PERFORMANCE OF OPERATING			C	C	C	09/82C				

R-1216320-SPC

S A F E T Y   I S S U E S   M A N A G E M E N T   S Y S T E M  
P L A N T   D A T A

08/17/87

PLANT	DOCKET	TYPE	NSSS SUPPLIER	THERMAL CAPACITY	LICENSEE			STATE	REGION	OL ISSUE	OL EXPIRATION
SUSQUEHANNA 1	05000387	BWR	GE	3293 MWT	PENNSYLVANIA POWER & LIGHT			PA	1	07/82C	07/22
APPLICABLE ISSUES				IMPO. INIT.	IMPO. COMP.	IMPL. COMP.	VERIFY COMPLET	ISSUE PRIORITY	MPA VER PRIORITY	DOCKET PRIORITY	VERIFY PRIORITY
I.C.7.1	NSSS VENDOR REV. OF PROC - LOW POWER TES			C	C	C	09/82C				
I.C.7.2	NSSS VENDOR REV. OF PROC - POWER ASCENSI			C	C	C	09/82C				
I.C.8	PILOT MON OF SELECTED EMERGENCY PROC FOR			C	C	C	08/82C				
I.D.2.1	F-09 PLANT-SAFETY PARAMETER DISPLAY CONSOLE - 04/83C					07/84C	N/A				
I.D.2.2	F-09 PLANT-SAFETY PARAMETER DISPLAY CONSOLE - 04/83C					07/84C	12/84C				
I D 2.3	F-09 PLANT-SAFETY PARAMETER DISPLAY CONSOLE - 04/83C					07/84C	12/84C				
I G 1.3	TRAINING DURING LOW-POWER TESTING - TRAI			C	C	C	09/82C				
II.B.1.2	F-10 REACTOR-COOLANT SYSTEM VENTS - INSTALL V			C	C	C	05/82C				
II.B.1.3	F-10 REACTOR-COOLANT SYSTEM VENTS - PROCEDURE			C	C	C	05/82C				
II.B.2.2	PLANT SHIELDING - CORRECTIVE ACTIONS TO			C			N/A				
II.B.2.3	F-11 PLANT SHIELDING - PLANT MODIFICATIONS (L			C	C	C	09/82C				
II.B.3.2	POSTACCIDENT SAMPLING - CORRECTIVE ACTIO			C			N/A				
II.B.3.3	POSTACCIDENT SAMPLING - PROCEDURES			C		12/85C					
II.B.3.4	F-12 POSTACCIDENT SAMPLING - PLANT MODIFICATI			C		12/85C					
II.B.4.2.B	F-13 TRAINING FOR MITIGATING CORE DAMAGE - CO			C	C	C	06/82C				
II.D.1.1	RELIEF & SAFETY VALVE TEST REQUIREMENTS			03/84C	05/86C	01/86C	N/A				
II.D.1.2.A	RELIEF & SAFETY VALVE TEST REQUIREMENTS			03/84C	05/86C	01/86C	N/A				
II.D.1.2.B	F-14 RELIEF & SAFETY VALVE TEST REQUIREMENTS			03/84C	05/86C	01/86C	08/82C				
II.D.1.3	RELIEF & SAFETY VALVE TEST REQUIREMENTS			03/84C	05/86C	01/86C	05/82C				

closed in Inspection Report  
387/83-14 but reopened  
by Audit Team in  
Inspection Report 387/84-10.  
Item completed in 1985  
but have never been  
reinspected.



R-1216320-SPC

## SAFETY ISSUES MANAGEMENT SYSTEM

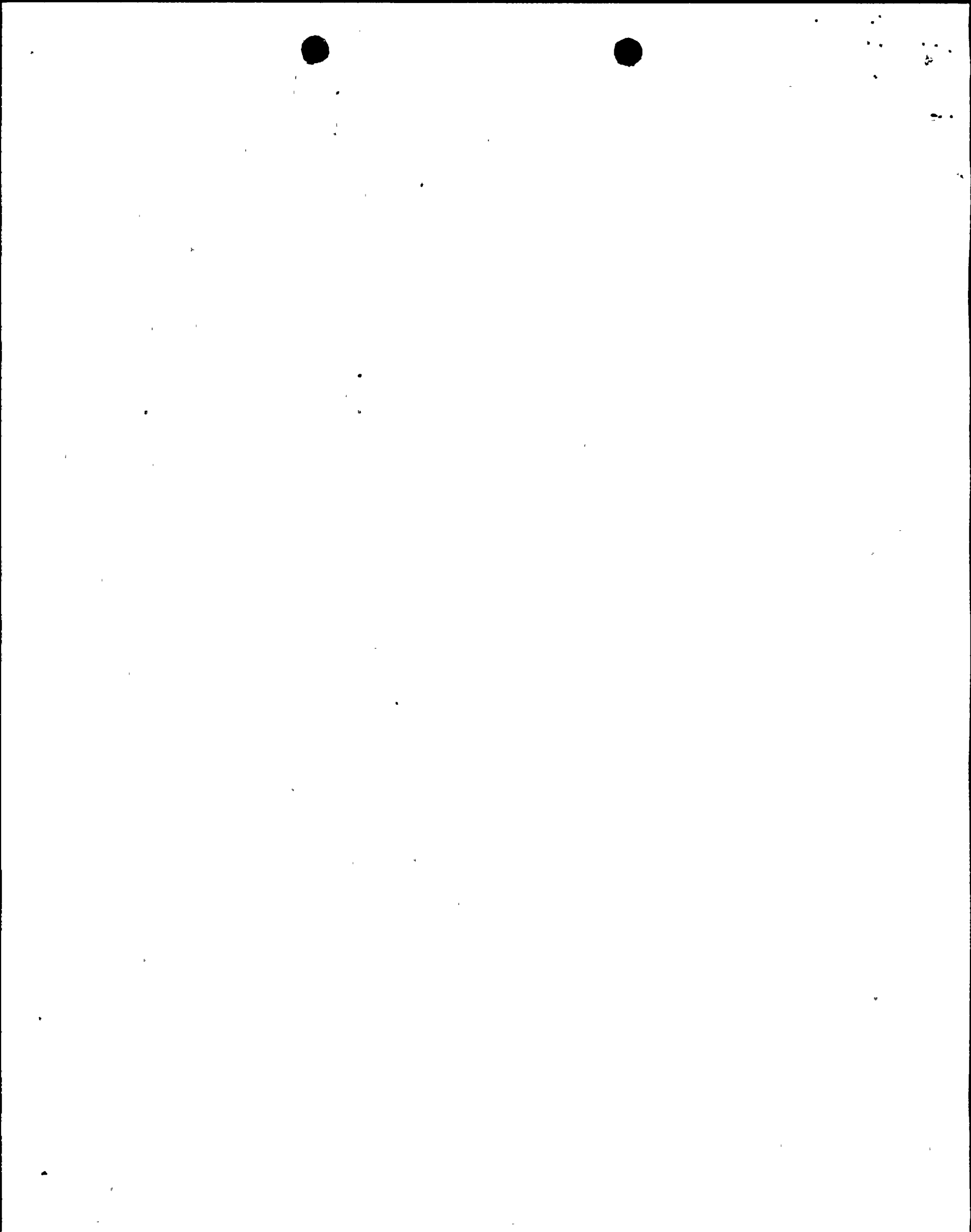
08/17/87

## PLANT DATA

PLANT	DOCKET	TYPE	NSSS SUPPLIER	THERMAL CAPACITY	LICENSEE	STATE	REGION	OL ISSUE	OL EXPIRATION			
SUSQUEHANNA 1	05000387	BWR	GE	3293 MWT	PENNSYLVANIA POWER & LIGHT	PA	1	07/82C	07/22			
APPLICABLE ISSUES												
					IMPO. INIT.	IMPO. COMP.	IMPL. COMP.	VERIFY COMPLET	ISSUE PRIORITY	MPA VER PRIORITY	DOCKET PRIORITY	VERIFY PRIORITY
II.D.3.1	VALVE POSITION INDICATION - INSTALL DIRE				C	C	C	08/82C				
II.E.4.1.2	DEDICATED HYDROGEN PENETRATIONS - REVIEW				C			05/82C				
II.E.4.1.3	F-18 DEDICATED HYDROGEN PENETRATION - INSTALL				C			05/82C				
II.E.4.2.1-4	CONTAINMENT ISOLATION DEPENDABILITY - IMP				C	C	C	08/82C				
II.E.4.2.5.A	CONTAINMENT ISOLAT. DEPENDABILITY - CNM				C			N/A				
II.E.4.2.5.B	CONTAINMENT ISOLATION DEPENDABILITY - CN				C	C	C	08/82C				
II.E.4.2.6	F-19 CONTAINMENT ISOLATION DEPENDABILITY - CN				C	C	C	08/82C				
II.E.4.2.7	F-19 CONTAINMENT ISOLATION DEPENDABILITY - RA				C	C	C	08/82C				
II.F.1.1	F-20 ACCIDENT-MONITORING - PROCEDURES				C	C	C	04/84C				
II.F.1.2.A	F-20 ACCIDENT-MONITORING - NOBLE GAS MONITOR				C			06/84C				
II.F.1.2.B	F-21 ACCIDENT-MONITORING - IODINE/PARTICULATE				C			12/85C				
II.F.1.2.C	F-22 ACCIDENT-MONITORING - CONTAINMENT HIGH-R				C			06/84C				
II.F.1.2.D	F-23 ACCIDENT-MONITORING - CONTAINMENT PRESSU				C	C	C	09/82C				
II.F.1.2.E	F-24 ACCIDENT-MONITORING - CONTAINMENT WATER				C	C	C	09/82C				
II.F.1.2.F	F-25 ACCIDENT-MONITORING - CONTAINMENT HYDROG				C	C	C	09/82C				
II.F.2.4	F-26 INSTRUMENTATION FOR DETECT. OF INADEQUAT				12/83C	03/84C	02/85C	06/82C				
III.A.1.1	EMERGENCY PREPAREDNESS, SHORT TERM				C	C	C	05/82C				
III.A.1.2.1	UPGRADE EMERGENCY SUPPORT FACILITIES - I				C			6/87C				
III.A.1.2.3	UPGRADE EMER SUPPORT FACILITIES-MODS INC				C			6/87C				

Closed in Inspection Report 387/82-33 but reopened by Audit Team in Inspection Report 84-10. Items completed in 1985 but have never been reinspected.

closed by letter dated 6/30/87



R-1216320-SPC

## SAFETY ISSUES MANAGEMENT SYSTEM

08/17/87

## PLANT DATA

PLANT	DOCKET	TYPE	NSSS SUPPLIER	THERMAL CAPACITY	LICENSEE	STATE	REGION	OL ISSUE	OL EXPIRATION		
SUSQUEHANNA 1	05000387	BWR	GE	3293 MWT	PENNSYLVANIA POWER & LIGHT	PA	1	07/82C	07/22		
APPLICABLE ISSUES				IMPO. INIT.	IMPO. COMP.	IMPL. COMP.	VERIFY COMPLET	ISSUE PRIORITY	MPA VER PRIORITY	DOCKET PRIORITY	VERIFY PRIORITY
III.A.2.2	F-68 UPGRADE PREPAREDNESS - METEROROLOGICAL D			07/85C		03/86C					
III.D.1.1.1	PRIMARY COOLANT OUTSIDE CONTAINMENT - LEA			C	C	C	09/82C				
III.D.3.3.1	INPLANT RAD. MONIT. - PROVIDE MEANS TO D			C	C	C	09/82C				
III.D.3.3.2	F-69 INPLANT RADIATION MONIT. - MODIFICATIONS			C	C	C	09/82C				
III.D.3.4.1	F-70 CONTROL ROOM HABITABILITY - REVIEW			C	C	C	05/82C				
II.K.1.10	IE BULLETINS - OPERABILITY STATUS			C	C	C	08/82C				
II.K.1.22	IE BULLETINS - AUX. HEAT REM SYSTM, PROC			C	C	C	08/82C				
II.K.1.23	IE BULLETINS - RV LEVEL, PROCEDURES			C	C	C	08/82C				
II.K.1.5	IE BULLETINS - REVIEW ESF VALVES			C	C	C	08/82C				
II.K.3.13.B	F-43 FINAL RECOMMENDATIONS,B&O TASK FORCE - H			C	C	C	08/82C				
II.K.3.15	F-45 FINAL RECOMMENDATIONS,B&O TASK FORCE - I			C	C	C	08/82C				
II.K.3.16.B	F-46 FINAL RECOM.,B&O TASK FORCE - CHALLENGE			C	C	C	05/82C				
II.K.3.17	F-47 FINAL RECOMMENDATIONS,B&O TASK FORCE - E			C			N/A				
II.K.3.18.C	F-48 FINAL RECOMMENDATIONS,B&O TASK FORCE - A			C	C	C	06/85C				
II.K.3.21.B	F-50 FINAL RECOMMENDATIONS,B&O TASK FORCE - R			C	C	C	05/82C				
II.K.3.22.A	F-51 FINAL RECOMMENDATIONS,B&O TASK FORCE - R			C	C	C	08/82C				
II.K.3.22.B	F-51 FINAL RECOMMENDATIONS,B&O TASK FORCE - R			C	C	C	08/82C				
II.K.3.24	F-52 FINAL RECOMMENDATIONS,B&O TASK FORCE - S			C	C	C	05/82C				
II.K.3.25.A	FINAL RECOMMENDATIONS,B&O TASK FORCE - P			C	C	C	07/84C				

R-1216320-SPC

S A F E T Y   I S S U E S   M A N A G E M E N T   S Y S T E M  
P L A N T   D A T A

08/17/87

PLANT	DOCKET	TYPE	NSSS SUPPLIER	THERMAL CAPACITY	LICENSEE			STATE	REGION	OL ISSUE	OL EXPIRATION
SUSQUEHANNA 1	05000387	BWR	GE	3293 MWT	PENNSYLVANIA POWER & LIGHT			PA	1	07/82C	07/22
APPLICABLE ISSUES				IMPO. INIT.	IMPO. COMP.	IMPL. COMP.	VERIFY COMPLET	ISSUE PRIORITY	MPA VER PRIORITY	DOCKET PRIORITY	VERIFY PRIORITY
II.K.3.25.B	F-53 FINAL RECOMMENDATIONS,B&O TASK FORCE - P			C	C	C	07/84C				
II.K.3.27	F-54 FINAL RECOMMENDATIONS,B&O TASK FORCE - C			C	C	C	08/82C				
II.K.3.28	F-55 FINAL RECOMMENDATIONS,B&O TASK FORCE - Q			C	C	C	06/82C				
II.K.3.30.B	F-57 FINAL RECOMMENDATIONS,B&O TASK FORCE - S			C	C	C	06/82C				
II.K.3.30.C	FINAL RECOMMENDATIONS,B&O TASK FORCE - S			C	C	C	09/82C				
II.K.3.31	F-58 FINAL RECOMMENDATIONS,B&O TASK FORCE - C			C	C	C	05/82C				
II.K.3.44	F-59 FINAL RECOM.,B&O TASK FORCE - EVAL. TRAN			C	C	C	05/82C				
II.K.3.45	F-60 FINAL RECOM.,B&O TASK FORCE - MANUAL DEP			C	C	C	05/82C				
M48743	SUSQUEHANNA 1 - PROPOSED AMENDMENT 1 TO			08/82C	06/84C			M		M	
M48878	SUSQUEHANNA 1 - CHANGE TO DIESEL GENERAT			09/82C	06/84C			M		M	
M49137	SUSQUEHANNA 1 - MOLDED CASE CIRCUIT BREA			10/82C	10/84C			M		M	
M49256	SUSQUEHANNA 1 - SAMPLE TEST OF PROTECTIV			12/82C	06/84C			M		M	
M49595	SUSQUEHANNA 1 - REVISION 6 TO EMERGENCY			01/83C	10/83C			M		M	
M49596	SUSQUEHANNA 1 - REVISION 31 TO FSAR			01/83C	06/85C			M		M	
M49597	SUSQUEHANNA 1 - REVISION 32 TO FSAR			01/83C	11/84C			M		M	
M49642	SUSQUEHANNA 1 - EXPAND POWER/FLOW MAP OP			02/83C	11/83C			M		M	
M49914	SUSQUEHANNA 1 - FIRE DETECTION INSTRUMEN			03/83C	11/83C			M		M	
M51508	SUSQUEHANNA 1 - REACTOR VESSEL MATERIAL			05/83C	05/87C			L		L	
M51716	SUSQUEHANNA 1 - SIMULATED LOSS OF OFFSIT			05/83C	05/84C			L		L	

R-1216320-SPC

08/17/87

## SAFETY ISSUES MANAGEMENT SYSTEM

## PLANT DATA

PLANT	DOCKET	TYPE	NSSS SUPPLIER	THERMAL CAPACITY	LICENSEE			STATE	REGION	OL ISSUE	OL EXPIRATION
SUSQUEHANNA 1	05000387	BWR	GE	3293 MWT	PENNSYLVANIA POWER & LIGHT			PA	I	07/82C	07/22
APPLICABLE ISSUES				IMPO. INIT.	IMPO. COMP.	IMPL. COMP.	VERIFY COMPLET	ISSUE PRIORITY	MPA VER PRIORITY	DOCKET PRIORITY	VERIFY PRIORITY
M51958	SUSQUEHANNA 1	- LICENSE AMENDMENT TO INC		06/83C	05/84C			M			M
M51980	SUSQUEHANNA 1	- PROPOSED TRANSCO PIPELIN		07/83C	04/84C			M			M
M51982	SUSQUEHANNA 1	- INSERVICE INSPECTION PRO		06/83C	01/87C	6/83C		M			M
M51983	SUSQUEHANNA 1	- COMMON ELECTRICAL POWER		07/83C	05/84C			M			M
M52048	SUSQUEHANNA 1	- MAIN STEAM LINE RADIATIO		07/83C	04/86C			H			H
M52150	SUSQUEHANNA 1	- FIRE HOSE STATIONS		08/83C	12/83C			L			L
M52151	SUSQUEHANNA 1	- MONTHLY GRAB SAMPLES		08/83C	12/83C			L			L
M52495	SUSQUEHANNA 1	- SNUBBER INSERVICE VISUAL		10/83C	05/84C			M			M
M52496	SUSQUEHANNA 1	- PRIMARY CONTAINMENT ISOL		10/83C	11/83C			H			H
M52585	SUSQUEHANNA 1	- ESW PUMP LOAD SEQUENCE T		10/83C	12/83C						
M52586	SUSQUEHANNA 1	- ULTIMATE HEAT SINK T/S 4		10/83C	05/84C			M			M
M52717	SUSQUEHANNA 1	- PRIMARY CONTAINMENT ISOL		11/83C	05/84C			H			H
M53232	SUSQUEHANNA 1	- SRV INPLANT TEST		11/83C	03/84C			M			M
M53323	SUSQUEHANNA-1	- L/C 2.C.28 (B) TMI ITEM		12/83C	05/84C			L			L
M53324	SUSQUEHANNA-1	- REPORTING REQUIREMENTS L/		12/83C	11/85C			L			L
M53325	SUSQUEHANNA-1	- STANDBY GAS TREATMENT SY		12/83C	03/84C			H			H
M53564	SUSQUEHANNA 1	- REVISION 7 TO EMERGENCY		02/84C	06/84C			M			M
M54157	SUSQUEHANNA 1	- EMERGENCY PLANNING EXERC		01/84C	03/84C			M			M
M54614	SUSQUEHANNA 1	- HIGH ENERGY LINE BREAKS		09/83C	05/84C			M			M

R-1216320-SPC

08/17/87

S A F E T Y   I S S U E S   M A N A G E M E N T   S Y S T E M  
P L A N T   D A T A

PLANT	DOCKET	TYPE	NSSS SUPPLIER	THERMAL CAPACITY	LICENSEE			STATE	REGION	OL ISSUE	OL EXPIRATION
SUSQUEHANNA 1	05000387	BWR	GE	3293 MWT	PENNSYLVANIA POWER & LIGHT			PA	1	07/82C	07/22
APPLICABLE ISSUES				IMPO. INIT.	IMPO. COMP.	IMPL. COMP.	VERIFY COMPLET	ISSUE PRIORITY	MPA VER PRIORITY	DOCKET PRIORITY	VERIFY PRIORITY
M54633	SUSQUEHANNA 1 - EXEMPTION FROM STATE AND			01/84C	04/84C			M		M	
M54755	SUSQUEHANNA-1 - SPRAY POND OPERATING LIM			04/84C	11/84C			M		M	
M54949	SUSQUEHANNA 1 - PHYSICAL SECURITY PLAN -			05/84C	04/85C			M		M	
M54967	SUSQUEHANNA-1 FEEDWATER BYPASS LEAKAGE			05/84C	12/84C			M		M	
M55021	SUSQUEHANNA 1 - THERMAL HYDRAULIC STABIL			05/84C	10/84C			M		M	
M55088	SUSQUEHANNA 1 - EXEMPTION TO GENERAL DES			05/84C	09/84C			M		M	
M55124	SUSQUEHANNA 1 - SPECIAL REPORTING REQUIR			05/84C	11/84C			M		M	
M55125	SUSQUEHANNA 1 - ADMIN CHANGES TO TECH SP			05/84C	11/84C			M		M	
M55126	SUSQUEHANNA 1 - DEFINITIONS - PROPOSED A			05/84C	04/85C			M		M	
M55127	SUSQUEHANNA 1 - SAFETY LIMITS AND LIMITI			05/84C	04/85C			M		M	
M55128	SUSQUEHANNA 1 - REACTIVITY CONTROL SYSTE			05/84C	04/85C			M		M	
M55129	SUSQUEHANNA 1 - INSTRUMENTATION - PROPOS			05/84C	04/85C			M		M	
M55130	SUSQUEHANNA 1 - REACTOR COOLANT SYSTEM -			05/84C	04/85C			M		M	
M55131	SUSQUEHANNA 1 - EMERGENCY CORE COOLING S			05/84C	04/85C			M		M	
M55132	SUSQUEHANNA 1 - CONTAINMENT SYSTEMS - PR			05/84C	04/85C			M		M	
M55133	SUSQUEHANNA 1 - PLANT SYSTEMS - PROPOSED			05/84C	04/85C			M		M	
M55134	SUSQUEHANNA 1 - ELECTRICAL POWER SYSTEMS			05/84C	04/85C			M		M	
M55135	SUSQUEHANNA 1 - REFUELING OPERATIONS - P.			05/84C	04/85C			M		M	
M55136	SUSQUEHANNA 1 - SPECIAL TEST EXCEPTIONS			05/84C	04/85C			M		M	

R-1216320-SPC

08/17/87

S A F E T Y   I S S U E S   M A N A G E M E N T   S Y S T E M  
P L A N T   D A T A

PLANT	DOCKET	TYPE	NSSS SUPPLIER	THERMAL CAPACITY	LICENSEE			STATE	REGION	OL ISSUE	OL EXPIRATION
APPLICABLE ISSUES				IMPO. INIT.	IMPO. COMP.	IMPL. COMP.	VERIFY COMPLET	ISSUE PRIORITY	MPA VER PRIORITY	DOCKET PRIORITY	VERIFY PRIORITY
SUSQUEHANNA 1	05000387	BWR	GE	3293 MWT	PENNSYLVANIA POWER & LIGHT			PA	1	07/82C	07/22
M55137	SUSQUEHANNA 1	- RADIOACTIVE EFFLUENTS -		05/84C	04/85C			M		M	
M55138	SUSQUEHANNA 1	- RADIOLOGICAL ENVIRONMENT		05/84C	04/85C			M		M	
M55139	SUSQUEHANNA 1	- DESIGN FEATURES - PROPOS		05/84C	03/85C			M		M	
M55424	SUSQUEHANNA 1	- CHUGGING LOADS FOLLOWUP		07/84C	05/85C			M		M	
M55664	SUSQUEHANNA 1	- REVIEW SER INPUTS PER DL		09/84C	10/84C						
M55777	SUSQUEHANNA 1	- IN-VESSEL FUEL RACK		09/84C	02/85C			M		M	
M55779	SUSQUEHANNA 1	- EMERGENCY SERVICE WATER		09/84C	12/85C			M		M	
M55801	SUSQUEHANNA 1	- CONTAINMENT PURGE VALVES		09/84C	04/85C			M		M	
M55803	SUSQUEHANNA 1	- MCPR OPERATIONAL LIMIT		09/84C	04/85C			M		M	
M55804	SUSQUEHANNA 1	- 300 START TEST FOR FIFTH		09/84C	11/84C			M		M	
M55823	SUSQUEHANNA 1	- REACTOR RECIRC PUMP OVER		09/84C	04/85C			M		M	
M55922	SUSQUEHANNA 1	- RELOCATION OF DRYWELL AT		09/84C	04/85C			M		M	
M55923	SUSQUEHANNA 1	- PERMANENT RADIATION MONI		09/84C	01/85C			M		M	
M56039	SUSQUEHANNA 1	- 480 VOLT SWING BUSES		10/84C	07/85C			M		M	
M56058	SUSQUEHANNA 1	- HEPA FILTERS AND CHARCOA		09/84C	05/85C			M		M	
M56068	SUSQUEHANNA 1	- SDV VENT AND DRAIN VALVE		10/84C	10/84C			H		H	
M56069	SUSFQUEHANNA 1	- BWR SCRAM SOLENOID VALV		10/84C	02/87C						
M56229	SUSQUEHANNA 1	- CLOSURE OF LICENSE CONDI		10/84C	04/85C			M		M	
M56230	SUSQUEHANNA 1	- REGULATORY GUIDE 1.97 RE		10/84C	04/85C			M		M	

R-1216320-SPC

## SAFETY ISSUES MANAGEMENT SYSTEM

08/17/87

## PLANT DATA

PLANT	DOCKET	TYPE	NSSS SUPPLIER	THERMAL CAPACITY	LICENSEE			STATE	REGION	OL ISSUE	OL EXPIRATION
APPLICABLE ISSUES				IMPO. INIT.	IMPO. COMP.	IMPL. COMP.	VERIFY COMPLET	ISSUE PRIORITY	MPA VER PRIORITY	DOCKET PRIORITY	VERIFY PRIORITY
SUSQUEHANNA 1	05000387	BWR	GE	3293 MWT	PENNSYLVANIA POWER & LIGHT			PA	1	07/82C	07/22
M56322	SUSQUEHANNA	STEAM ELECTRIC STATION UNIT1		10/84C	04/85C						
M56362	SUSQUEHANNA	UNIT 1 - MODIFICATIONS TO SU		11/84C	04/85C						
M56367	SUSQUEHANNA	UNIT - SPDS CONFIRMATORY ITE		08/84C		08/84C					
M56399	SUSQUEHANNA	1 - L.C. 2.A/2.B.(2)		11/84C	12/85C						
M56430	SUSQUEHANNA	1 - CORE DAMAGE ESTIMATION		11/84C	10/85C						
M56531	SUSQUEHANNA	UNIT 1 - 125 VOLT BATTERIES		12/84C	02/85C						
M56585	SUSQUEHANNA	1 - FW BYPASS LEAKAGE		12/84C	08/85C						
M56702	SUSQUEHANNA	UNIT 1 - RELOAD PACKAGE		01/85C	04/85C						
M56756	SUSQUEHANNA	1 - IST		12/84C		12/84C					
M56760	SUSQUEHANNA	1 - INSTALLATION OF 5TH DIES		12/84C	12/85C						
M56824	SUSQUEHANNA	1 - EMERGENCY DIESEL GEN. RE		02/85C	04/85C						
M56830	SUSQUEHANNA	1 - ENVIRONMENTAL QUALIFICAT		01/85C	03/85C						
M56831	SUSQUEHANNA	1 - FIRE PROTECTION REPORT R		01/85C	06/85C						
M56889	SUSQUEHANNA	1 -L.C. 2.C.(28)(D)(I) INADE		02/85C	04/85C						
M56957	SUSQUEHANNA	1 - PROP 65 ORGANIZATION STR		02/85C	05/85C						
M56958	SUSQUEHANNA	1 - PROPOSED AMEND 62 CONTAI		01/85C	05/85C						
M56959	SUSQUEHANNA	1 - PROPOSED 61 ADS MODS		01/85C	05/85C						
M56961	SUSQUEHANNA	1 - PROPOSED 63 ADMINISTRATI		02/85C	05/85C						
M57045	SUSQUEHANNA	1 - TESTABLE SPECTACLE FLANG		10/84C	05/85C				M		M



R-1216320-SPC

08/17/87

S A F E T Y   I S S U E S   M A N A G E M E N T   S Y S T E M  
P L A N T   D A T A

PLANT	DOCKET	TYPE	NSSS SUPPLIER	THERMAL CAPACITY	LICENSEE	STATE	REGION	OL ISSUE	OL EXPIRATION		
SUSQUEHANNA 1	05000387	BWR	GE	3293 MWT	PENNSYLVANIA POWER & LIGHT	PA	1	07/82C	07/22		
APPLICABLE ISSUES				IMPO. INIT.	IMPO. COMP.	IMPL. COMP.	VERIFY COMPLET	ISSUE PRIORITY	MPA VER PRIORITY	DOCKET PRIORITY	VERIFY PRIORITY
M57179	FIRE PROTECTION AUDIT W/REGION I SUPPORT			03/85C	09/85C						
M57327	SUSQUEHANNA 1 - FUEL LOADING CHAMBERS			04/85C	04/85C						
M57669	SUSQUEHANNA 1 - SINGLE LOOP OPERATION			04/85C	04/86C						
M57858	SUSFQUEHANNA 1 - CHUGGING LOADS			06/85C	06/86C						
M57859	SUSFQUEHANNA 1 - CHUGGING LOADS			06/85C	09/85C						
M57981	SUSQUEHANNA 1 - CLOSURE OF L.C.2.(.126)			06/85C	03/86C						
M57982	SUSQUEHANNA 1 - CLOSURE OF L.C. 2.C.(27)			06/85C	03/86C						
M57984	SUSQUEHANNA 1 - CLOSURE OF L.C. 2.C.(32)			06/85C	02/87C						
M57986	SUSQUEHANNA 1 - CLOSURE OF L.C. 2.C.(23)			06/85C	02/87C						
M57987	SUSQUEHANNA 1 - CLOSURE OF L.C. 2.C.(16)			05/85C	03/86C						
M57988	SUSQUEHANNA 1 - CLOSURE OF L.C. 2.C.(17)			05/85C	03/86C						
M57989	SUSQUEHANNA 1 - CLOSURE OF L.C. 2.C.(24)			05/85C	03/86C						
M57990	SUSQUEHANNA 1 - OBSURE OF L.C. 2.C.(31)			04/85C	03/86C						
M57991	SUSQUEHANNA 1 - PROCEDURES GENERATION PA			05/85C	10/85C						
M57992	SUSQUEHANNA 1 - PROCEDURES GENERATION PA			05/85C	10/85C						
M59392	SUSQUEHANNA 1 - SPRAY POND VALVES			07/85C	11/85C						
M59393	SUSQUEHANNA 2 - SPRAY POND VALVES			07/85C	11/85C						
M59475	SUSQUEHANNA 1 - TECH. SPEC. INTERPRETATI			08/85C	12/85C						
M59595	SUSQUEHANNA 1 - NITROGEN MAKE-UP SYSTEM			08/85C	10/85C						

6/85C  
6/85C

R-1216320-SPC

08/17/87

S A F E T Y   I S S U E S   M A N A G E M E N T   S Y S T E M  
P L A N T   D A T A

PLANT	DOCKET	TYPE	NSSS SUPPLIER	THERMAL CAPACITY	LICENSEE	STATE	REGION	OL ISSUE	OL EXPIRATION			
SUSQUEHANNA 1	05000387	BWR	GE	3293 MWT	PENNSYLVANIA POWER & LIGHT	PA	1	07/82C	07/22			
APPLICABLE ISSUES					IMPO. INIT.	IMPO. COMP.	IMPL. COMP.	VERIFY COMPLET	ISSUE PRIORITY	MPA VER PRIORITY	DOCKET PRIORITY	VERIFY PRIORITY
M59647	SUSQUEHANNA 1	- FIRE PROTECTION REPORT		09/85C								
M60098	SUSQUEHANNA 1	- DRYWELL COOLING FANS		10/85C	03/87C	<i>Request has been withdrawn</i>						
M60208	SUSQUEHANNA 1	- MCC (74/28)		11/85C	03/86C							
M60210	SUSQUEHANNA 1	- ZONE III RAD MONITORS		11/85C	02/86C							
M60322	SUSQUEHANNA 1	- TECH. SPEC. INTERPRETATI		12/85C	02/86C							
M60435	SUSQUEHANNA 1	- ADS MODS PROP (75/29)		12/85C								
M60437	SUSQUEHANNA 1	- PROPOSED (76/31) ADMIN C		12/85C	04/87C	<i>4/87c</i>						
M60440	SUSQUEHANNA 1	- TMI ITEM I.C.1.2A		01/86C	<i>2/87c</i>	<i>02/87C</i>						
M60443	SUSQUEHANNA 1	- TMI ITEM I.C.1.3A		01/86C	02/87C							
M60444	SUSQUEHANNA 1	- TMI ITEM III.D.1.1		01/86C	02/87C							
M60626	SUSQUEHANNA 1	- CYCLES 3 RELOAD		01/86C	04/86C	<i>6/86c</i>						
M60642	SUSQUEHANNA 1	- CODE "N" STAMPING		09/85C	05/86C							
M60923	SUSQUEHANNA 1	- FIFTH DIESEL		02/86C	06/87C	<i>6/87c</i>						
M61097	SUSQUEHANNA 1	- (81/34) - DRYWELL COOLIN		03/86C	03/87C							
M61322	SUSQUEHANNA 1	- DG RELIABILITY TECH. SPE		04/86C	09/86C	<i>9/86c</i>						
M61333	SUSQUEHANNA 1	- DIESEL RELIABILITY TECH.		04/86C	09/86C							
M61454	SUSQUEHANNA 1	- CHANNEL FUNCTIONAL TESTI		04/86C	02/87C							
M61563	SUSQUEHANNA 1	- SECONDARY CNTMT (84/37)		05/86C	08/86C							
M62012	SUSQUEHANNA 1	- SALP		07/86C	01/87C	<i>1/87c</i>						

R-1216320-SPC

08/17/87

S A F E T Y   I S S U E S   M A N A G E M E N T   S Y S T E M  
P L A N T   D A T A

PLANT	DOCKET	TYPE	NSSS SUPPLIER	THERMAL CAPACITY	LICENSEE				STATE	REGION	OL ISSUE	OL EXPIRATION
APPLICABLE ISSUES												
					IMPO. INIT.	IMPO. COMP.	IMPL. COMP.	VERIFY COMPLET	ISSUE PRIORITY	MPA VER PRIORITY	DOCKET PRIORITY	VERIFY PRIORITY
SUSQUEHANNA 1	05000387	BWR	GE	3293 MWT	PENNSYLVANIA POWER & LIGHT				PA	1	07/82C	07/22
M62960	SUSQUEHANNA 1	- JET IMPINGEMENT ON CONTA		09/86C							M	
M63446	SUSQUEHANNA 1	- EXEMPTION FROM GDC-4		10/86C	10/86C						H	
M63448	SUSQUEHANNA 1	- DEGRADED VOLTAGE PROTECT		09/86C	07/87C		7/87C				H	
M63450	SUSQUEHANNA 1	- PHYSICAL SECURITY PLAN C		10/86C	03/87C	03/87C					H	
M64390	SUSQUEHANNA 1	- EXTENSION OF MPLHGR LIMI		12/86C	05/87C		5/87C				M	
M64391	SUSQUEHANNA 1	- CONTAINMENT ISOLATION &		12/86C	9/87C		11/87				M	
M64694	SUSQUEHANNA 1	- ADMINISTRATIVE CHANGES 8		08/86C	09/87						L	
M65020	SUSQUEHANNA 1	- PUMP TRIP BYPASS ON TURB		02/87C	07/87C						M	
M65022	SUSQUEHANNA 1	- HISTORICAL PRESERVATION		03/87C							L	
M65024	SUSQUEHANNA 1	- POST ACCIDENT ALTERNATIV		02/87C							M	
M65026	SUSQUEHANNA 1	- ONE TIME RELIEF FROM LEA		02/87C							M	
M65157	SUSQUEHANNA 1	- SODIUM PENTABORATE CONC.		04/87C	09/87C		10/87				M	
M65159	SUSQUEHANNA 1	- FUNCTIONAL TESTING OF SN		04/87C	09/87C		9/87C				L	
M65165	SUSQUEHANNA 1	- NEW ACTION STATEMENT FOR		04/87C							M	
M65167	SUSQUEHANNA 1	- SGTS HI-RAD INST. SURV.		04/87C								
M65169	SUSQUEHANNA 1	- SDV VENT/DRAIN VALVE SUR		04/87C	09/87						M	
M65171	SUSQUEHANNA 1	- REVIEW OF REPORT FOR COR		04/87C	02/88						M	
M65635	SUSQUEHANNA 1	- OVERCURRENT PROTECTIVE D		06/87C			11/87				H	
M65636	SUSQUEHANNA 1	- RELOAD		06/87C			11/87				H	

R-1216320-SPC

S A F E T Y   I S S U E S   M A N A G E M E N T   S Y S T E M  
P L A N T   D A T A

08/17/87

PLANT	DOCKET	TYPE	NSSS SUPPLIER	THERMAL CAPACITY	LICENSEE		STATE	REGION	OL ISSUE	OL EXPIRATION	
SUSQUEHANNA 1	05000387	BWR	GE	3293 MWT	PENNSYLVANIA POWER & LIGHT		PA	1	07/82C	07/22	
APPLICABLE ISSUES				IMPO. INIT.	IMPO. COMP.	IMPL COMP	VERIFY COMPLET	ISSUE PRIORITY	MPA VER PRIORITY	DOCKET PRIORITY	VERIFY PRIORITY
M65644	SUSQUEHANNA 1 - COMMON MODE FAILURE POTE			06/87C						H	
M65646	SUSQUEHANNA 1 - BATTERY LOAD PROFILE INC			06/87C	11/87	11/87				H	
MPA-A-18	A-18 TECH SPECS AFFECTED BY 50.72 AND 50.73 (			09/84C	11/84C	11/84C		H		M	N
MPA-A-20	A-20 10 CFR 50.62 OPERATING REACTOR REVIEWS			04/86C	09/87	00/87			H		
MPA-F-08	F-08 I.D.1.1 DETAILED CONTROL ROOM DESIGN REV			04/83C		00/82C					
MPA-F-71	F-71 I.D.1.2 DETAILED CONTROL ROOM REVIEW (FO			10/84C		12/86C					
NMSS-2	ACCESS AUTHORIZATION			02/87	12/87	04/88	/89	H			
NMSS-3	MISC AMEND CONCERN PHYSICAL PROTECTION O			07/86	10/86	/87	/87	H			
NMSS-4	SEARCHES OF INDIVIDUALS AT POWER REACTOR			07/86	10/86	/87	/87	H			
NMSS-5	REPORTING REQUIREMENTS FOR SAFEGUARDS EV			/86	/86	/87	/87	H			
NMSS-7	REQUIREMENTS FOR CRIMINAL HISTORY CHECKS			/87	/87	/88	/88	H			
NR-3	SEVERE ACCIDENT POLICY IMPLEMENTATION ON			09/87	/89		/89	H			

R-1216320-SPC

08/17/87

S A F E T Y   I S S U E S   M A N A G E M E N T   S Y S T E M  
P L A N T   D A T A

PLANT	DOCKET	TYPE	NSSS SUPPLIER	THERMAL CAPACITY	LICENSEE			STATE	REGION	OL ISSUE	OL EXPIRATION
SUSQUEHANNA 2	05000388	BWR	GE	3293 MWT	PENNSYLVANIA POWER & LIGHT			PA	1	06/84C	03/24
APPLICABLE ISSUES				IMPO. INIT.	IMPO. COMP.	IMPL. COMP.	VERIFY COMPLET	ISSUE PRIORITY	MPA VER PRIORITY	DOCKET PRIORITY	VERIFY PRIORITY
50	REACTOR VESSEL LEVEL INSTRUMENTATION IN			N/A	N/A	N/A	N/A				
75 (B-76)	B-76 ITEM 1.1 - POST TRIP REVIEW; PROGRAM DES			04/85C	05/85C	00/83C					N
75 (B-77)	B-77 ITEM 2.1 - EQUIPMENT CLASSIFICATION & VE			03/84C		03/84C					N
75 (B-78)	B-78 ITEMS 3.1.1 & 3.1.2 -POST MAINTENANCE TE			11/83C	06/86C	00/83C					N
75 (B-79)	B-79 ITEM 3.1.3 - POST MAINTENANCE TESTING -			11/83C	11/85C	00/83C					N
75 (B-85)	B-85 SALEM ATWS 1.2 DATA CAPABILITY			04/85C	06/85C	03/84C					N
75 (B-87)	B-87 SALEM ATWS 3.2.1 & 3.2.2 S-R COMPONENTS			05/85C	06/86C	00/83C					N
75 (B-88)	B-88 SALEM ATWS 3.2.3 T.S. S-R COMPONENTS			05/85C	11/85C	00/83C					N
75 (B-92)	B-92 SALEM ATWS 4.5.1 DIVERSE TRIP FEATURES			11/83C	06/86C	03/84C					N
75 (B-93)	B-93 SALEM ATWS 4.5.2 & 4.5.3 TEST ALTERNATIV			03/84C		04/85C					N
B-56	D-19 DIESEL GENERATOR RELIABILITY			09/84C	09/85C	09/84C			H		N
HF 1.1	SHIFT STAFFING			10/83	01/84C	10/85C			H		
I.A.1.1.1	SHIFT TECHNICAL ADVISOR - ON DUTY			C	C	C	06/83C				
I.A.1.1.4	SHIFT TECHNICAL ADVISOR - DESCRIBE LONG			C	C	C	06/83C				
				C	C	C	06/83C				
I.A.1.2	SHIFT SUPERVISOR RESPONSIBILITIES			C	C	C	06/83C				
I.A.1.3.1	F-02 SHIFT MANNING - LIMIT OVERTIME			C	C	C	06/83C				
I.A.1.3.2	F-02 SHIFT MANNING - MIN SHIFT CREW			C	C	C	06/83C				
I.A.1.4	LONG-TERM UPGRADE OF OPERATIONS PERSONNE				04/83	04/83			M		
I.A.2.1.1	IMMEDIATE UPGRADING OF RO & SRO TRAINING			C					N/A		

R-1216320-SPC

SAFETY ISSUES MANAGEMENT SYSTEM  
PLANT DATA

08/17/87

PLANT	DOCKET	TYPE	NSSS SUPPLIER	THERMAL CAPACITY	LICENSEE			STATE	REGION	OL ISSUE	OL EXPIRATION
SUSQUEHANNA 2	05000388	BWR	GE	3293 MWT	PENNSYLVANIA POWER & LIGHT			PA	1	06/84C	03/24
APPLICABLE ISSUES				IMPO. INIT.	IMPO. COMP.	IMPL. COMP.	VERIFY COMPLET	ISSUE PRIORITY	MPA VER PRIORITY	DOCKET PRIORITY	VERIFY PRIORITY
I.A.2.1.4	F-03	IMMEDIATE UPGRADING OF RO & SRO TRAINING		C	C	C	08/83C				
I.A.2.7		ACCREDITATION OF TRAINING INSTITUTIONS		03/85	12/86	03/85	03/87	M			
I.A.3.1.3.A		REVISE SCOPE & CRIT. FOR LIC. EXAMS - SI		C			N/A				
I.A.3.1.3.B		REVISE SCOPE & CRIT. FOR LIC. EXAMS - SI		C			N/A				
I.B.1.2		EVALUATION OF ORGANIZATION & MANAGEMENT		C	C	C	06/83C				
I.C.1.1		SHORT-TERM ACCIDENT & PROCEDURES REVIEW		C	C	C	08/83C				
I.C.1.2.B	F-05	SHORT-TERM ACCID. & PROCEDURES REV. - IN 07/84C					09/85C				
I.C.1.3.B	F-05	SHORT-TERM ACCID. & PROCEDURES REV. - TR 07/84C					09/85C				
I.C.2		SHIFT & RELIEF TURNOVER PROCEDURES		C	C	C	06/83C				
I.C.3		SHIFT-SUPERVISOR RESPONSIBILITY		C	C	C	06/83C				
I.C.4		CONTROL-ROOM ACCESS		C	C	C	06/83C				
I.C.5	F-06	FEEDBACK OF OPERATING EXPERIENCE		C	C	C	06/83C				
I.C.6	F-07	VERIFY CORRECT PERFORMANCE OF OPERATING		C	C	C	11/83C				
I.C.7.1		NSSS VENDOR REV. OF PROC - LOW POWER TES		C	C	C	08/83C				
I.C.7.2		NSSS VENDOR REV. OF PROC - POWER ASCENSI		C	C	C	08/83C				
I.C.8		PILOT MON OF SELECTED EMERGENCY PROC FOR		C	C	C	08/83C				
I.D.2.1	F-09	PLANT-SAFETY PARAMETER DISPLAY CONSOLE -		N/A	N/A	N/A	N/A				
I.D.2.2	F-09	PLANT-SAFETY PARAMETER DISPLAY CONSOLE -		C	C	C	12/84C				
I.D.2.3	F-09	PLANT-SAFETY PARAMETER DISPLAY CONSOLE -		C	C	C	12/84C				

R-1216320-SPC

S A F E T Y   I S S U E S   M A N A G E M E N T   S Y S T E M  
P L A N T   D A T A

08/17/87

PLANT	DOCKET	TYPE	NSSS SUPPLIER	THERMAL CAPACITY	LICENSEE				STATE	REGION	OL ISSUE	OL EXPIRATION
-----												
SUSQUEHANNA 2	05000388	BWR	GE	3293 MWT	PENNSYLVANIA POWER & LIGHT				PA	1	06/84C	03/24
-----												
APPLICABLE ISSUES				IMPO. INIT.	IMPO. COMP.	IMPL. COMP.	VERIFY COMPLET	ISSUE PRIORITY	MPA PRIORITY	VER PRIORITY	DOCKET PRIORITY	VERIFY PRIORITY
-----												
I.G.1.3	TRAINING DURING LOW-POWER TESTING - TRAI			C	C	C	06/85C					
II.B.1.2	F-10 REACTOR-COOLANT SYSTEM VENTS - INSTALL V			C	C	C	08/83C					
II.B.1.3	F-10 REACTOR-COOLANT SYSTEM VENTS - PROCEDURE			C	C	C	08/83C					
II.B.2.2	PLANT SHIELDING - CORRECTIVE ACTIONS TO			C			N/A					
II.B.2.3	F-11 PLANT SHIELDING - PLANT MODIFICATIONS (L			C	C	C	08/83C					
II.B.3.2	POSTACCIDENT SAMPLING - CORRECTIVE ACTIO			C			N/A					
II B.3.3	POSTACCIDENT SAMPLING - PROCEDURES			C			12/85C					
II.B.3.4	F-12 POSTACCIDENT SAMPLING - PLANT MODIFICATI			C			12/85C					
II.B.4.2.B	F-13 TRAINING FOR MITIGATING CORE DAMAGE - CO			C	C	C	11/83C					
II.D.1.1	RELIEF & SAFETY VALVE TEST REQUIREMENTS			03/84C	02/87	01/86C	N/A					
II.D.1.2.A	RELIEF & SAFETY VALVE TEST REQUIREMENTS			03/84C	02/87	01/86C	N/A					
II.D.1.2.B	F-14 RELIEF & SAFETY VALVE TEST REQUIREMENTS			03/84C	05/86C	01/86C	N/A			H		
II.D.1.3	RELIEF & SAFETY VALVE TEST REQUIREMENTS			03/84C	02/87	01/86C	N/A					
II.D.3.1	VALVE POSITION INDICATION - INSTALL DIRE			C	C	C	08/83C					
II.E.4.1.2	DEDICATED HYDROGEN PENETRATIONS - REVIEW			C			08/83C					
II.E.4.1.3	F-18 DEDICATED HYDROGEN PENETRATION - INSTALL			C			08/83C					
II.E.4.2.1-4	CONTAINMENT ISOLATION DEPENDABILITY - IMP			C	C	C	04/84C					
II.E.4.2.5.A	CONTAINMENT ISOLAT. DEPENDABILITY - CNTM			C			N/A					
II.E.4.2.5.B	CONTAINMENT ISOLATION DEPENDABILITY - CN			C	C	C	04/84C					

Reopened by Audit Team  
in Inspection Report  
388/84-11. Items completed  
in 1985 but have never  
been reinspected

R-1216320-SPC

08/17/87

S A F E T Y   I S S U E S   M A N A G E M E N T   S Y S T E M  
P L A N T   D A T A

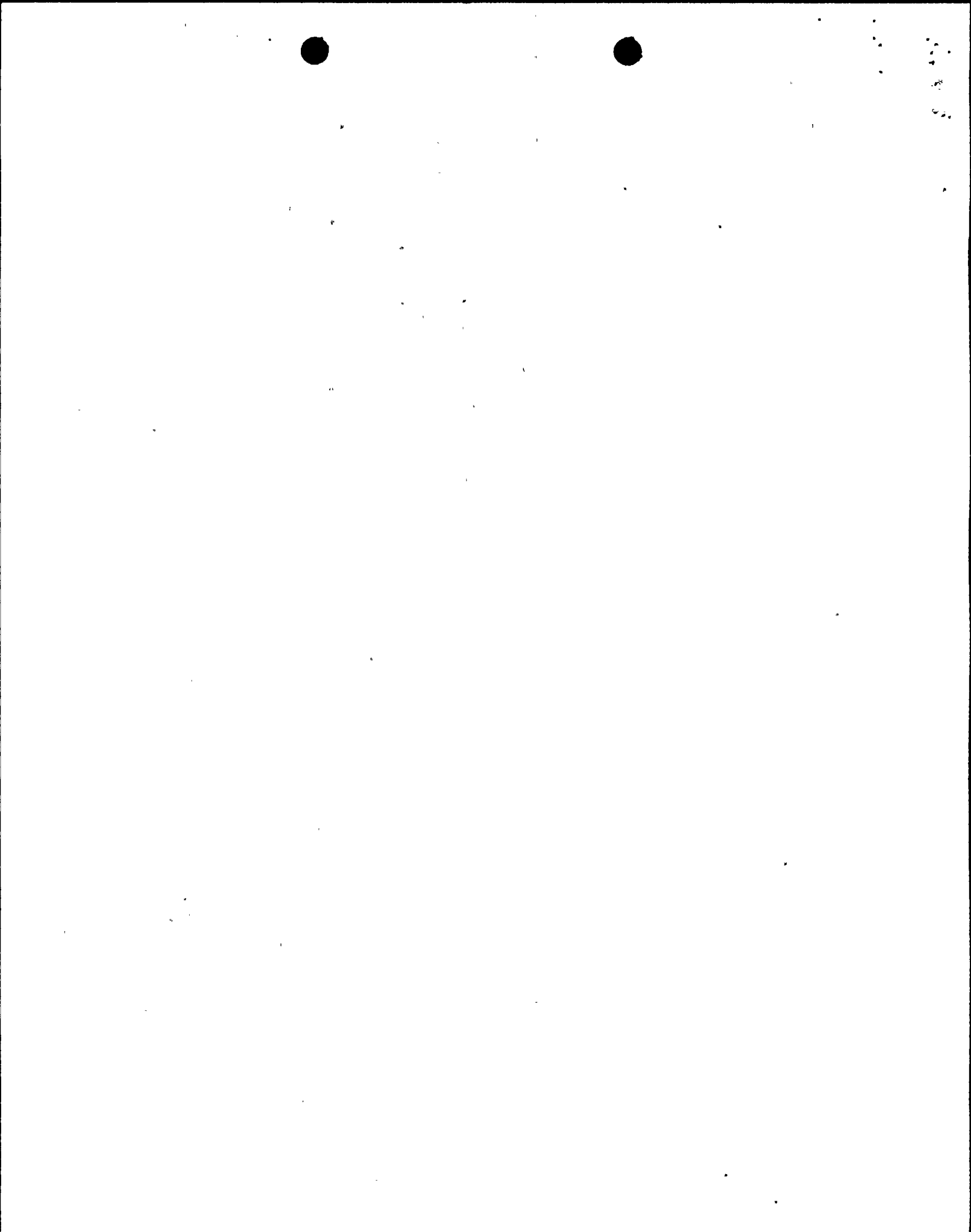
PLANT	DOCKET	TYPE	NSSS SUPPLIER	THERMAL CAPACITY	LICENSEE	STATE	REGION	OL ISSUE	OL EXPIRATION			
SUSQUEHANNA 2	05000388	BWR	GE	3293 MWT	PENNSYLVANIA POWER & LIGHT	PA	1	06/84C	03/24			
APPLICABLE ISSUES					IMPO. INIT.	IMPO. COMP.	IMPL. COMP.	VERIFY COMPLET	ISSUE PRIORITY	MPA VER PRIORITY	DOCKET PRIORITY	VERIFY PRIORITY
II.E.4.2.6	F-19	CONTAINMENT ISOLATION DEPENDABILITY - CN			C		C	04/84C				
II.E.4.2.7	F-19	CONTAINMENT ISOLATION DEPENDABILITY - RA			C		C	04/84C				
II.F.1.1	F-20	ACCIDENT-MONITORING - PROCEDURES			C			04/84C				
II.F.1.2.A	F-20	ACCIDENT-MONITORING - NOBLE GAS MONITOR			C		C	06/84C				
II.F.1.2.B	F-21	ACCIDENT-MONITORING - IODINE/PARTICULATE			C			06/84C				
II.F.1.2.C	F-22	ACCIDENT-MONITORING - CONTAINMENT HIGH-R			C		C	06/84C				
II.F.1.2.D	F-23	ACCIDENT-MONITORING - CONTAINMENT PRESSU			C		C	09/85C				
II.F.1.2.E	F-24	ACCIDENT-MONITORING - CONTAINMENT WATER			C		C	09/85C				
II.F.1.2.F	F-25	ACCIDENT-MONITORING - CONTAINMENT HYDROG			C		C	09/85C				
II.F.2.4	F-26	INSTRUMENTATION FOR DETECT. OF INADEQUAT			C		C	11/83C				
III.A.1.2.1		UPGRADE EMERGENCY SUPPORT FACILITIES - I			C							
III.A.1.2.3		UPGRADE EMER SUPPORT FACILITIES-MODS INC			C							
III.A.2.2	F-68	UPGRADE PREPAREDNESS - METEROROLOGICAL D			C							
III.D.1.1.1		PRIMARY COOLANT OUTSIDE CONTAINMENT - LEA			C		C	03/84C				
III.D.3.3.1		INPLANT RAD. MONIT. - PROVIDE MEANS TO D			C		C	03/84C				
III.D.3.3.2	F-69	INPLANT RADIATION MONIT. - MODIFICATIONS			C		C	03/84C				
II.K.1.10		IE BULLETINS - OPERABILITY STATUS			C		C	11/83C				
II.K.1.22		IE BULLETINS - AUX. HEAT REM SYSTM, PROC			C		C	08/83C				
II.K.1.23		IE BULLETINS - RV LEVEL, PROCEDURES			C		C	01/84C				

Reopened by NRC Audit Team in Inspection Report 388/84-11. Items completed in 1985 but have never been reinspected.

12/85C }  
6/87C }  
6/87/c }

See letter of 6/30/87





R-1216320-SPC

08/17/87

S A F E T Y   I S S U E S   M A N A G E M E N T   S Y S T E M  
P L A N T   D A T A

PLANT	DOCKET	TYPE	NSSS SUPPLIER	THERMAL CAPACITY	LICENSEE				STATE	REGION	OL ISSUE	OL EXPIRATION
APPLICABLE ISSUES												
					IMPO. INIT.	IMPO. COMP.	IMPL. COMP.	VERIFY COMPLET	ISSUE PRIORITY	MPA VER PRIORITY	DOCKET PRIORITY	VERIFY PRIORITY
SUSQUEHANNA 2	05000388	BWR	GE	3293 MWT	PENNSYLVANIA POWER & LIGHT				PA	1	06/84C	03/24
II.K.1.5	IE BULLETINS - REVIEW ESF VALVES				C	C	C	05/84C				
II.K.3.13.B	F-43 FINAL RECOMMENDATIONS,B&O TASK FORCE - H				C	C	C	08/83C				
II.K.3.15	F-45 FINAL RECOMMENDATIONS,B&O TASK FORCE - I				C	C	C	08/83C				
II.K.3.16.B	F-46 FINAL RECOM.,B&O TASK FORCE - CHALLENGE				C	C	C	08/83C				
II.K.3.17	F-47 FINAL RECOMMENDATIONS,B&O TASK FORCE - E				C			N/A				
II.K.3.18.C	F-48 FINAL RECOMMENDATIONS,B&O TASK FORCE - A				C	C	C	05/84C				
II.K.3.21.B	F-50 FINAL RECOMMENDATIONS,B&O TASK FORCE - R				C	C	C	01/84C				
II.K.3.22.A	F-51 FINAL RECOMMENDATIONS,B&O TASK FORCE - R				C	C	C	08/83C				
II.K.3.22.B	F-51 FINAL RECOMMENDATIONS,B&O TASK FORCE - R				C	C	C	08/83C				
II.K.3.24	F-52 FINAL RECOMMENDATIONS,B&O TASK FORCE - S				C	C	C	08/83C				
II.K.3.25 A	FINAL RECOMMENDATIONS,B&O TASK FORCE - P				C	C	C	07/84C				
II.K.3.25.B	F-53 FINAL RECOMMENDATIONS,B&O TASK FORCE - P				C	C	C	08/83C				
II.K.3.27	F-54 FINAL RECOMMENDATIONS,B&O TASK FORCE - C				C	C	C	05/84C				
II.K.3.28	F-55 FINAL RECOMMENDATIONS,B&O TASK FORCE - Q				C	C	C	-5/84C				
M54612	SUSQUEHANNA 2 - COMMON ELECTRICAL POWER			02/84C	05/84C				M		M	
M54613	SUSQUEHANNA 2 - HIGH ENERGY LINE BREAKS			04/84C	05/84C				M		M	
M54634	SUSQUEHANNA 2 - EXEMPTION FROM STATE AND			01/84C	04/84C				M		M	
M54754	SUSQUEHANNA - VHS HEAT LOAD			04/84C	11/84C				M		M	
M54756	SUSQUEHANNA-2 - NITROGEN MAKEUP SYSTEM			04/84C	10/84C				M		M	

R-1216320-SPC

SAFETY ISSUES MANAGEMENT SYSTEM  
PLANT DATA

08/17/87

PLANT	DOCKET	NSSS SUPPLIER	THERMAL CAPACITY	LICENSE				STATE	REGION	OL ISSUE	OL EXPIRATION
SUSQUEHANNA 2	05000388	GE	3293 MWT	PENNSYLVANIA POWER & LIGHT				PA	1	06/84	03/24
APPLICABLE ISSUES			IMPO. INIT.	IMPO. COMP.	IMPL. COMP.	VERIFY COMPLETE	ISSUE PRIORITY	MPA VER PRIORITY	DOCK PRIORITY	VERIFY PRIORITY	
M54765	SUSQUEHANNA 2 - INITIAL TEST PROGRAM		04/84C	05/84C						M	
M54950	SUSQUEHANNA 2 - PHYSICAL SECURITY PLAN		05/84C	12/84C			M			M	
M54968	SUSQUEHANNA 2 - FEEDWATER BYPASS LEAKAGE		05/84C	12/84C			M			M	
M55022	SUSQUEHANNA 2 - THERM HYDRAULIC STABIL		05/84C	10/84C			M			M	
M55089	SUSQUEHANNA 2 - EXEMPT ION TO GENERAL DES		05/84C	09/84C			M			M	
M55065	SUSQUEHANNA 2 - REVIEWER INPUTS PER DL		09/84C	10/84C							
M55778	SUSQUEHANNA 2 - IN-V FUEL RACK		09/84C	01/85C			M			M	
M55780	SUSQUEHANNA 2 - EMERGENCY SERVICE WATER		09/84C	02/85C			M			M	
M55802	SUSQUEHANNA 2 - MCPRC RATIONAL LIMIT		09/84C	04/85C			M			M	
M55985	SUSQUEHANNA 2 - ESW RC OPERATED VALVE		09/84C	09/85C			M			M	
M56040	SUSQUEHANNA 2 - 480 SWING BUSES		10/84C	07/85C			M			M	
M56059	SUSQUEHANNA 2 - HEPA FILTERS AND CHARCOA		09/84C	04/85C			M			M	
M56323	SUSQUEHANNA UNIT 2 - CTM INERTING		11/84C	12/84C							
M56324	SUSQUEHANNA 2 - ASME CLASS E CODE CASE		11/84C	12/84C							
M56431	SUSQUEHANNA 2 - CORE DAMAGE ESTIMATION		11/84C	10/85C							
M56532	SUSQUEHANNA UNIT 2 - 125 VOLT B SERIES		12/84C	02/85C							
M56586	SUSQUEHANNA 2 - FW BYPASS LEAKAGE		12/84C	08/85C							
M56757	SUSQUEHANNA 2 - IST		12/84C								
M56761	SUSQUEHANNA 2 - INSTALLATION OF BUSES		12/84C	35C							

12/84C

R-1216320-SPC

S A F E T Y   I S S U E S   M A N A G E M E N T   S Y S T E M  
P L A N T   D A T A

08/17/87

PLAN	DOCKET	NSC SUPPLY	THermal CAPACITY	LIKELIHOOD	STATE	REGION	OL ISSUE	OL EXPIRATION		
-----	-----	-----	-----	-----	-----	-----	-----	-----		
SUSQUEHANNA 2	388	GE	3200 MWT	PENNSYLVANIA		1	06/85	03/24		
	APPLICATION ISSUES		IMPO. INIT.	PRO. MP.	IMP. C.	VERIFY COMPLETE	ISSUE PRIORITY	MOR VER PRIORITY	DOCKET PRIORITY	VERIFY PRIORITY
M56823	SUSQUEHANNA 2 - EMERGENC	DIESEL GEN	RE	02/85C						
M56829	SUSQUEHANNA 2 - ENVIRON	MENTAL QUALIFICAT		01/85C						
M56832	SUSQUEHANNA 2 - FIRE PROTECTION	REPORT	R	01/85C						
M56890	SUSQUEHANNA 2 - L.C. 2.C.(12)(E)	INADEQU		02/85C						
M56956	SUSQUEHANNA 2 - PROP 18	ORGANIZATION STR		02/85C						
M5696	SUSQUEHANNA 2 - PROPOSED	ADS MODS		01/85C						
M5696	SUSQUEHANNA 2 - PROPOSED	RCIC TRIP FU		02/85C						
M5696	SUSQUEHANNA 2 - PROPOSED	ADMINISTRATI		03/85C						
M5704	SUSQUEHANNA 2 - TESTABLE	SPECTACLE FLANG		10/84C						
M57102	SUSQUEHANNA 2 - ISI PROGRAM			02/85C						2/85C
M57180	FIRE PROTECT	ION AUDIT W/REGION I	SUPPORT	03/85C						
M57328	SUSQUEHANNA 2 - FUEL LOADING	CHAMBERS		04/85C						
M57670	SUSQUEHANNA 2 - SINGLE LOOP	OPERATION		04/85C						
M57983	SUSQUEHANNA 2 - CLOSURE OF	L.C. 2.C.(27)		06/85C						
M57985	SUSQUEHANNA 2 - CLOSURE OF	L.C. 2.C.(32)		06/85C						
M59476	SUSQUEHANNA 2 - TECH. SPEC	INTERPRETATI		08/85C						
M59648	SUSQUEHANNA 2 - FIRE PROTECT	ION REPORT		09/85C						
M5964	SUSQUEHANNA 2 - SPECIAL REPORTING	REQUIRE		07/85C						
M596	SUSQUEHANNA 2 - DELETE L.C. 2.C.(4)	FORM		09/85C						

R-1216320-SPC

## SAFETY ISSUES MANAGEMENT SYSTEM

08/17/87

## PLANT DATA

PLANT	DOCKET	TYPE	NSSS SUPPLIER	THERMAL CAPACITY	LICENSEE	STATE	REGION	OL ISSUE	OL EXPIRATION			
SUSQUEHANNA 2	057, 388	BWR	GE	3293 MWT	PENNSYLVANIA POWER & LIGHT	PA	1	06/84C	03/24			
	APPLICABLE ISSUES				IMPO. INIT.	IMPO. COMP.	IMPL. COMP.	VERIFY COMPLET	ISSUE PRIORITY	MPA VER PRIORITY	DOCKET PRIORITY	VERIFY PRIORITY
M60120	SUSQUEHANNA 2 - BREAKER MODS/25			10/85C	04/86C							
M60209	SUSQUEHANNA 2 - MCC (74/28)			11/85C	03/86C							
M60211	SUSQUEHANNA 2 - ZONE III RAD MONITORS			11/85C	02/86C							
M60323	SUSQUEHANNA 2 - TECH. SPEC. INTERPRETATI			12/85C	04/86C							
M60436	SUSQUEHANNA 2 - ADS MODS PROP (75/29)			12/85C								
M60438	SUSQUEHANNA 2 - PROPOSED (76/31) ADMIN C			12/85C	04/87C							
M60439	SUSQUEHANNA 2 - MSIV SETPOINT CHANGE ON			12/85C	04/86C							
M60441	SUSQUEHANNA 2 - TMI ITEM I.C.1.2A			01/86C	02/87C							
M60442	SUSQUEHANNA 2 - TMI ITEM I.C.1.3.A			01/86C	02/87C							
M60445	SUSQUEHANNA 2 - TMI ITEM III.D.1.1			01/86C	02/87C							
M60924	SUSQUEHANNA 2 - FIFTH DIESEL			02/86C	06/87C							
M61098	SUSQUEHANNA 2 - (81/34) - DRYWELL COOLIN			03/86C	06/87C							
M61315	SUSQUEHANNA 2 - ISOL. VLV IN RWCW(35)			04/86C	07/86C							
M61323	SUSQUEHANNA 2 - DG RELIABILITY TECH. SPE			04/86C	09/86C							
M61334	SUSQUEHANNA 2 - DIESEL RELIABILITY TECH.			04/86C	09/86C							
M61455	SUSQUEHANNA 2 - CHANNEL FUNCTIONAL TESTI			04/86C	02/87C							
M61564	SUSQUEHANNA 2 - SECONDARY CNTMT (84/37)			05/86C	08/86C							
M61764	SUSQUEHANNA 2 - RELOAD			06/86C	10/86C							
M61815	SUSQUEHANNA 2 - MSIV HIGH RAD SETPOINT			06/86C	04/87C							

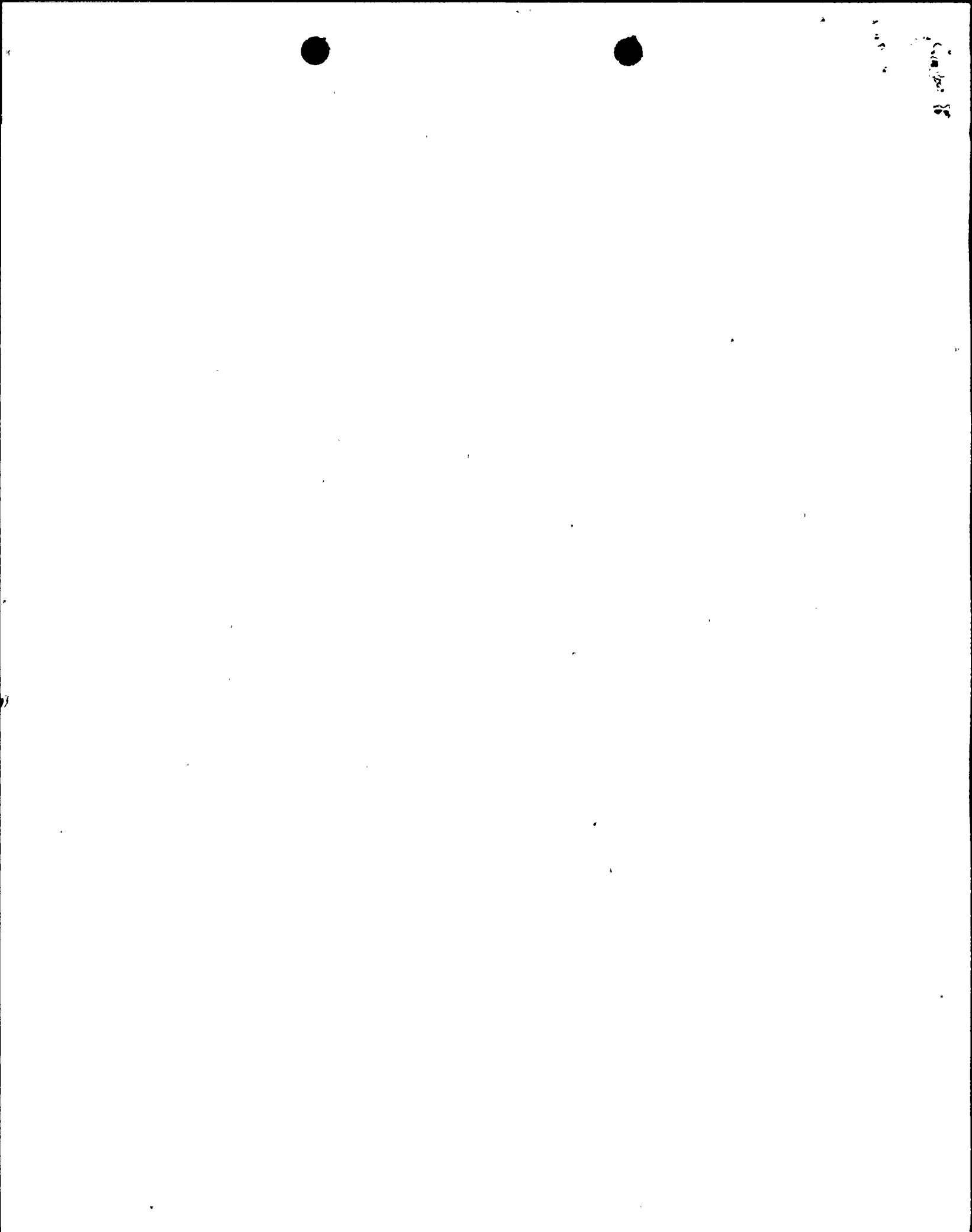
4/87C  
6/87C  
6/87C  
10/86C  
5/87C

R-1216320-SPC

08/17/87

S A F E T Y   I S S U E S   M A N A G E M E N T   S Y S T E M  
P L A N T   D A T A

PLANT	DOCKET	TYPE	NSSS SUPPLIER	THERMAL CAPACITY	LICENSEE	STATE	REGION	OL ISSUE	OL EXPIRATION		
SUSQUEHANNA 2	05000388	BWR	GE	3293 MWT	PENNSYLVANIA POWER & LIGHT	PA	1	06/84C	03/24		
APPLICABLE ISSUES				IMPO. INIT.	IMPO. COMP.	IMPL. COMP.	VERIFY COMPLET	ISSUE PRIORITY	MPA VER PRIORITY	DOCKET PRIORITY	VERIFY PRIORITY
M62013	SUSUEHANNA 2 - SALP			07/86C	01/87C	1/87C					
M62235	NA-1: AMEND LIC TO EXTEND DURATION OF F			08/86C							
M62961	SUSQUEHANNA 2 - JET IMPINGEMENT ON CONTA			09/86C					M		
M63447	SUSQUEHANNA 2 - EXEMPTION FROM GDC-4			10/86C					H		
M63449	SUSQUEHANNA 2 - DEGRADED VOLTAGE PROTECT			09/86C	07/87C	7/87C			H		
M63451	SUSQUEHANNA 2 - PHYSICAL SECURITY PLAN C			10/86C	03/87C	3/87C			H		
M64695	SUSQUEHANNA 2 - ADMINISTRATIVE CHANGES 8			08/86C	09/87				L		
M65021	SUSQUEHANNA 2 - PUMP TRIP BYPASS ON TURB			02/87C	07/87C				M		
M65022	SUSQUEHANNA 2 - HISTORICAL PRESERVATION			03/87C					L		
M65025	SUSQUEHANNA 2 - POST ACCIDENT ALTERNATIV			02/87C					M		
M65110	SUSQUEHANNA 2 - EMERGENCY TECH. SPEC. CH			04/87C	04/87C	Withdrawn			H		
M65158	SUSQUEHANNA 2 - SODIUM PENTABORATE CONC.			04/87C	09/87C	9/87C			M		
M65160	SUSQUEHANNA 2 - FUNCTIONAL TESTING OF SN			04/87C	09/87C	9/87C			L		
M65166	SUSQUEHANNA 2 - NEW ACTION STATEMENT FOR			04/87C					M		
M65168	SUSQUEHANNA 2 - SGTS HI-RAD INST. SURV.			04/87C							
M65170	SUSQUEHANNA 2 - SDV VENT/DRAIN VALVE SUR			04/87C	09/87				M		
M65172	SUSQUEHANNA 2 - REVIEW OF REPORT FOR COR			04/87C	02/88				M		
M65645	SUSQUEHANNA 2 - COMMON MODE FAILURE POTE			06/87C					H		
M65682	SUSQUEHANNA 2 - OVERCURRENT PROTECTIVE D			06/87C							



R-1216320-SPC

08/17/87

S A F E T Y   I S S U E S   M A N A G E M E N T   S Y S T E M  
P L A N T   D A T A

PLANT	DOCKET	TYPE	NSSS SUPPLIER	THERMAL CAPACITY	LICENSEE	STATE	REGION	OL ISSUE	OL EXPIRATION		
SUSQUEHANNA 2	05000388	BWR	GE	3293 MWT	PENNSYLVANIA POWER & LIGHT	PA	I	06/84C	03/24		
APPLICABLE ISSUES				IMPO. INIT.	IMPO. COMP.	IMPL. COMP.	VERIFY COMPLET	ISSUE PRIORITY	MPA VER PRIORITY	DOCKET PRIORITY	VERIFY PRIORITY
M65818	SUSQUEHANNA UNIT 2 - SINGLE LOOP OPERATI			06/87C						H	
M65838	SUSQUEHANNA 2 - BATTERY LOAD PROFILE INC			06/87C	11/87	11/87				H	
MPA-A-18	A-18	TECH SPECS AFFECTED BY 50.72 AND 50.73 (		09/84C	11/84C	04/84C		H		M	N
MPA-A-20	A-20	10 CFR 50.62 OPERATING REACTOR REVIEWS		06/84C	09/87	00/88			H		
MPA-F-08	F-08	I.D.1.1 DETAILED CONTROL ROOM DESIGN REV		03/84C		00/82C					
MPA-F-71	F-71	I.D.1.2 DETAILED CONTROL ROOM REVIEW (FO		10/84C		12/86					
NMSS-2	ACCESS AUTHORIZATION			02/87	12/87	04/88	/89	H			
NMSS-3	MISC AMEND CONCERN PHYSICAL PROTECTION O			07/86	10/86	/87	/87	H			
NMSS-4	SEARCHES OF INDIVIDUALS AT POWER REACTOR			07/86	10/86	/87	/87	H			
NMSS-5	REPORTING REQUIREMENTS FOR SAFEGUARDS EV			/86	/86	/87	/87	H			
NMSS-7	REQUIREMENTS FOR CRIMINAL HISTORY CHECKS			/87	/87	/88	/88	H			
NRR-3	SEVERE ACCIDENT POLICY IMPLEMENTATION ON			09/87	/89		/89	H			